



**Government of India
Ministry of Earth Sciences
India Meteorological Department**



Press Release

Date: 12th July, 2025

Time of Issue: 1315 hours IST

Subject: Heavy to very heavy rainfall likely over Madhya Pradesh, Rajasthan and north Gujarat during next 3 days.

Realised weather during past 24 hours till 0830 hours IST of today, the 12th July, 2025:

- ❖ **Heavy to very heavy rainfall with isolated extremely heavy rainfall (≥ 21 cm)** has been recorded over East Uttar Pradesh, East Madhya Pradesh and Coastal Karnataka.
- ❖ **Heavy to very heavy rainfall (7-20 cm)** has been recorded at isolated places over Himachal Pradesh; **Heavy rainfall (7-11 cm)** at isolated places over Haryana, West Uttar Pradesh, Rajasthan, West Madhya Pradesh, Mizoram, Chhattisgarh, South Interior Karnataka, Kerala & Mahe and Tamil Nadu.
- ❖ **Thunderstorm accompanied with Squally/Gusty winds with speed 40-60 kmph** over Jammu- Kashmir, Tamil Nadu, Manipur, Arunachal Pradesh, East Uttar Pradesh, Himachal Pradesh, Madhya Maharashtra, West Uttar Pradesh and Saurashtra & Kutch.
- ❖ **Hailstorm** reported at isolated places over Jammu-Kashmir (Srinagar).

For more details of realised weather, kindly refer [Annexure I](#).

i. Weather Systems, Forecast and Warnings (refer to Annexure II & III):

- ❖ The **Monsoon trough** runs near its normal position at mean sea level.
- ❖ An upper air **cyclonic circulation** lies over Haryana in lower & middle tropospheric levels tilting southwards with height.
- ❖ A **Cyclonic circulation** lies over northeast Madhya Pradesh in lower & middle tropospheric levels.
- ❖ A **trough** runs from north Haryana to northwest Bay of Bengal in lower tropospheric levels.
- ❖ An upper air **cyclonic circulation** lies over northeast Assam in lower tropospheric levels.
- ❖ An upper air **cyclonic circulation** likely to form over Gangetic West Bengal on 16th July and move west-northwestwards during subsequent 3-4 days.

Under the influence of these systems, the following weather is likely:

Northwest India:

- ✓ Isolated **heavy rainfall** likely over Jammu-Kashmir-Ladakh-Gilgit-Baltistan-Muzaffarabad during 14th-16th; Himachal Pradesh during 13th-18th; Uttarakhand during 12th-18th; Punjab on 16th; Haryana, Chandigarh & Delhi on 14th; West Uttar Pradesh on 13th, 16th & 17th; East Uttar Pradesh during 14th - 17th; Rajasthan during 12th-16th July with **very heavy rainfall over Uttarakhand on 13th; Uttar Pradesh on 12th; West Rajasthan during 13th-15th; East Rajasthan during 12th-14th July.**
- ✓ Light/moderate rainfall at most/many places accompanied with thunderstorm, lightning likely over western Himalayan region and some/many places over the plains during next 7 days.

East & Central India:

- ✓ Isolated **heavy rainfall** very likely to continue over Madhya Pradesh during 12th-18th; Chhattisgarh on 12th & during 16th-18th; West Bengal & Sikkim during 13th -15th; Bihar during 15th-17th; Jharkhand & Odisha during 13th-15th July **with very heavy rainfall over Madhya Pradesh during 12th-14th July.**
- ✓ Light/moderate rainfall at most/many places accompanied with accompanied with thunderstorm & lightning likely over the region during next 7 days.

West India:

- ✓ **Heavy rainfall** likely at isolated places over Konkan & Goa during 12th-15th; Gujarat Region during 12th-16th; Ghat areas of Madhya Maharashtra during 13th-15th and Saurashtra on 13th July **with very heavy rainfall over Gujarat Region on 13th & 14th July.**
- ✓ Light/moderate rainfall at many/some places very likely over the region during next 5 days.

Northeast India:

- ✓ Light/moderate rainfall at many places accompanied with **thunderstorm, lightning** likely to continue over Northeast India during next 7 days.
- ✓ Isolated **heavy rainfall** very likely over Assam & Meghalaya, Nagaland, Manipur, Mizoram & Tripura during 12th-18th; Arunachal Pradesh during 14th-18th July.

South Peninsular India:

- ✓ Isolated **heavy rainfall** likely over Kerala & Mahe, Coastal Karnataka during 12th-18th; South Interior Karnataka on 12th & during 15th -18th; Tamil Nadu during 15th-18th July.
- ✓ **Strong surface winds** (speed reaching 40-50 kmph) very likely over South Peninsular India during next 5 days.
- ✓ Light/moderate rainfall at many/some places over Kerala & Mahe, Lakshadweep, Karnataka, Rayalaseema; isolated to scattered rainfall over Coastal Andhra Pradesh & Yanam, Telangana during next 7 days.

Hot & Humid weather Warnings:

Hot & Humid weather conditions very likely in isolated pockets of Tamil Nadu on 12th & 13th; Coastal Andhra Pradesh & Yanam and Rayalaseema during 12th-14th July.

Fishermen Warnings:

Fishermen are advised to avoid venturing into the following from 12th July to 17th July 2025 to the following Areas:

Arabian Sea:

Along and off Goa, Konkan, south Gujarat coasts and adjoining sea areas for day 4 (15th July); along and off Kerala, Karnataka coasts & adjoining sea areas, over Lakshadweep area for day 3 to day 5 (14th to 17th July); along and off south Gujarat coast for day 1 (12th July); Along and off the Somalia coast and adjoining sea areas, Oman and adjoining Yemen coast & adjoining sea areas during day 1 to day 5 (12th to 17th July); most parts of westcentral Arabian Sea for day 1 & day 2 (12th & 13th July), most parts of westcentral and adjoining, some parts of eastcentral Arabian Sea for day 3 to day 5 (14th to 17th July), northern parts of south Arabian Sea for day 3 to day 5 (14th to 17th July); over parts of Comorin area for day 1 to day 5 (12th to 17th July).

Bay of Bengal:

Some parts of westcentral Bay of Bengal and southwest Bay of Bengal for day 2 to day 4 (13th to 16th July), few parts of westcentral and southwest Bay of Bengal day 5 (16th July), some southern parts of south Bay of Bengal for day 1 to day 4 (12th to 16th July), some southern parts of southwest Bay of Bengal for day 5 (16th July); Over Gulf of Mannar for day 1 to day 5 (12th to 17th July).

Total suspension of fishing operations is suggested over above mentioned areas and dates.

ii. Weather conditions and forecast over Delhi/NCR during 12th to 15th July, 2025 (Annexure IV)

For more details, kindly refer National Weather Bulletin:

https://mausam.imd.gov.in/responsive/all_india_forecast_bulletin.php

For District wise warnings refer: <https://mausam.imd.gov.in/responsive/districtWiseWarningGIS.php>

Rainfall recorded (in cm) during past 24 hours till 0830 hours IST of today, the 12th July:

- ❖ **East Madhya Pradesh:** Beohari (dist Shahdol) 25, Majhgaon (dist Satna) 24, Gudh (dist Rewa) 22, Huzur (dist Rewa) 21, Rewa-aws (dist Rewa) 20, Unchehra (dist Satna) 19, Ajaigarh (dist Panna) 19, Rampur (dist Sidhi) 19, Sidhi (gopadbanas) (dist Sidhi) 19, Churhat (dist Sidhi) 17, Ramnagar (dist Satna) 16, Rampur Baghelan (dist Satna) 15, Deori (dist Sagar) 15, Khajuraho Aero (dist Chhatarpur) 14, Panna-aws (dist Panna) 14, Chahtarpur-aws (dist Chhatarpur) 14, Maihar (dist Satna) 13, Bijawar (dist Chhatarpur) 13, Bahri (dist Sidhi) 13, Palera (dist Tikamgarh) 12, Sihawal (dist Sidhi) 11, Amanganj (dist Panna) 11, Gaurihar (dist Chhatarpur) 10, Gonour (dist Panna) 10, Nowgong (dist Chhatarpur) 10, Tikamgarh-aws (dist Tikamgarh) 10, Mangawan (dist Rewa) 9, Nagode (dist Satna) 9, Sohawal (dist Satna) 9, Birsingpur (dist Satna) 9, Shahnagar (dist Panna) 9, Tendukheda (dist Narsinghpur) 9, Niwas (dist Mandla) 9, Hatta (dist Damoh) 9, Majhauri (dist Sidhi) 8, Jabera (dist Damoh) 8, Satna (raghurajnagar) (dist Satna) 8, Narsinghpur-aws (dist Narsinghpur) 8, Prithvipur (dist Niwari) 7, Lidhora (dist Tikamgarh) 7, Pawai (dist Panna) 7, Patera (dist Damoh) 7, Baldevgarh (dist Tikamgarh) 7, Amarpatan (dist Satna) 7, Vijayraghogarh (dist Katni) 7, Mohangarh (dist Tikamgarh) 7, Banda (dist Sagar) 7, Singodi (dist Katni) 7, Ghansore (dist Seoni) 7, Shahgarh (dist Sagar) 7, Badagaon Dhasan (dist Tikamgarh) 7, Raipurkarchuliyan (dist Rewa) 7, Manpur (dist Umaria) 7;
- ❖ **Coastal Karnataka:** Manki (dist Uttara Kannada) 23, Shirali Pto (dist Uttara Kannada) 15, Kota (dist Udupi) 12, Honavar Obsy (dist Uttara Kannada) 11, Kundapur (dist Udupi) 10, Mangaluru (dist Dakshina Kannada) 10, Gokarna (dist Uttara Kannada) 9, Kumta (dist Uttara Kannada) 9, Mangaluru Ap Obsy (dist Dakshina Kannada) 9, Karkala (dist Udupi) 8, Udupi (dist Udupi) 8, Ankola (dist Uttara Kannada) 7, Mulki (dist Dakshina Kannada) 7;
- ❖ **East Uttar Pradesh:** Karwi (dist Chitrakoot) 22; Manikpur (dist Chitrakoot) 21; Banda (dist Banda) 15; Kanpur IAF (dist Kanpur City) 13; Mau Tehsil (dist Chitrakoot) 12; Attarra (dist Banda), Naraini (dist Banda) 11 Each; Banda CWC (dist Banda) 9; Bindki (dist Fatehpur), Chunar (dist Mirzapur) 7 Each;
- ❖ **West Uttar Pradesh:** Madawara (dist Lalitpur), Mahroni (dist Lalitpur) 10 Each; Jansath (dist Muzaffarnagar), Hapur (dist Hapur) 8 Each; Kulpahar (dist Mahoba), Talbehat (dist Lalitpur), Maudaha (dist Hamirpur) 7 Each;
- ❖ **Himachal Pradesh:** Murari Devi 12, Pandoh (dist Mandi) 8, Kothi (dist Kullu) 6;
- ❖ **East Rajasthan:** Sambhar Sr (dist Jaipur) 9, Sarmathura Sr (dist Dholpur) 8, Rajsamand (dist Rajsamand) 7;
- ❖ **Kerala & Mahe:** Palluruthy (dist Ernakulam) 9, Kochi I.a.f. (dist Ernakulam) 9, Nooranad (dist Alapuzha) 8, Mavelikara (dist Alapuzha) 8, Haripad (dist Alapuzha) 6;
- ❖ **West Madhya Pradesh:** Pichhore (dist Shivpuri) 9, Shamshabad (dist Vidisha) 9, Biaora (dist Rajgarh) 7, Jawad (dist Neemuch) 7, Dabra (dist Gwalior) 7, Salwani (dist Raisen) 7, Vidisha (dist Vidisha) 7, Kumbhraj (dist Guna) 7, Roan (dist Bhind) 7;
- ❖ **South Interior Karnataka:** Agumbe Aws (dist Shivamogga) 9, Kottigehara (dist Chikkamagaluru) 6;
- ❖ **West Rajasthan:** Padampur (dist Sri Ganganagar) 8, Bikaner (pbo) (dist Bikaner) 6;
- ❖ **Chhattisgarh:** Doura Kochali (dist Balrampur) 8, Shankargarh (dist Balrampur) 6;
- ❖ **Tamil Nadu:** Zone 05 Chennai central (dist Chennai) 7, Tarangambadi (dist Mayiladuthurai), Zone 07 Korattur (dist Chennai), Zone 01 Wimco Nagar (dist Chennai) 6 each;
- ❖ **Haryana:** Nagina REV (dist Nuh) 7;
- ❖ **Mizoram:** Chawngte ARG (dist Lawngtlai) 7.

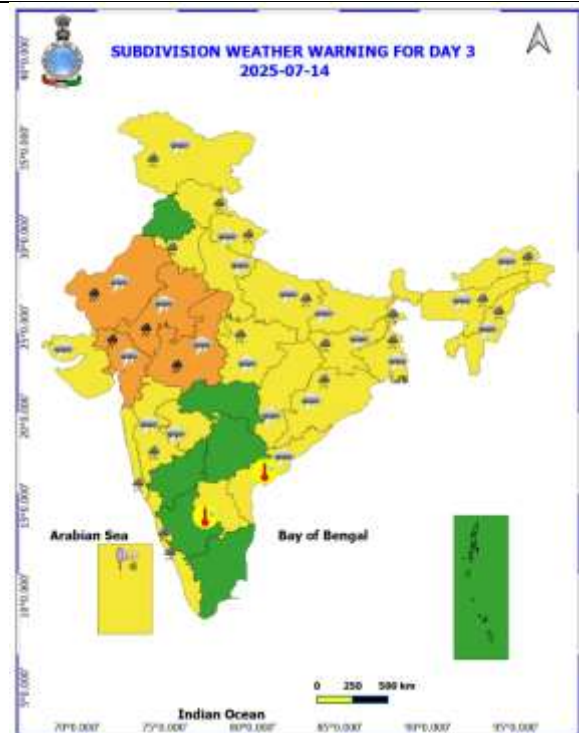
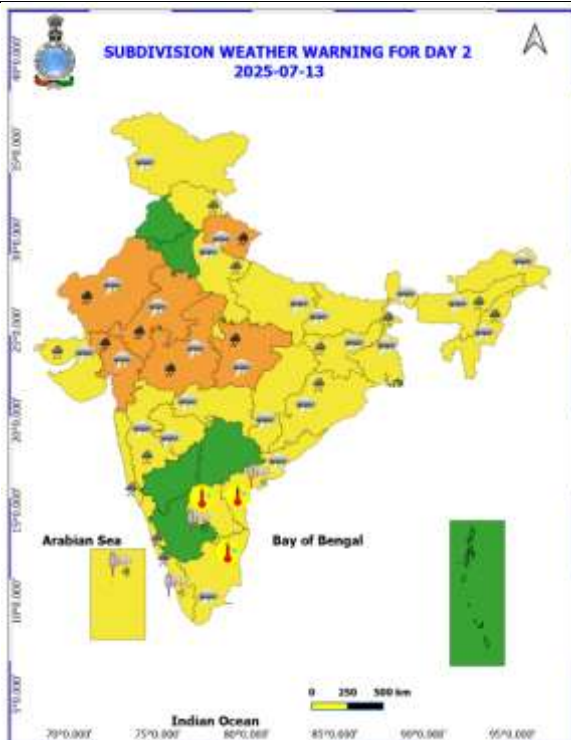
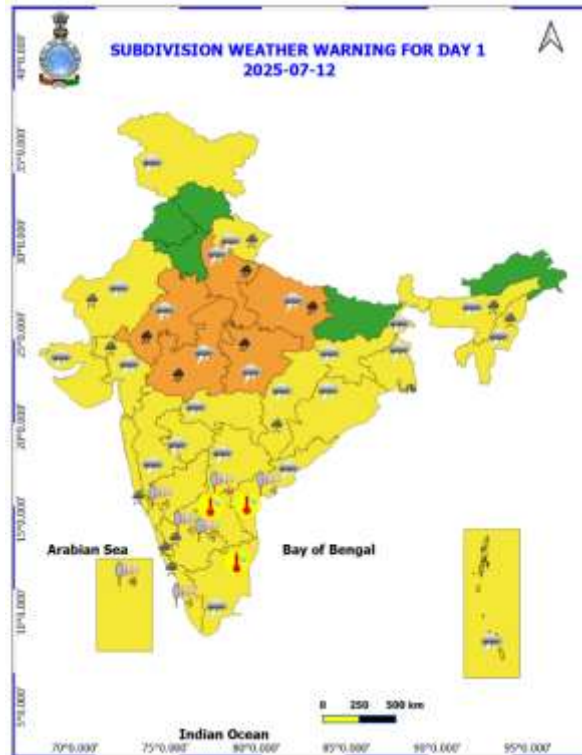
Realised Gusty Winds (kmph) During Past 24hours ending at 0830 hrs IST of today the 12th July:

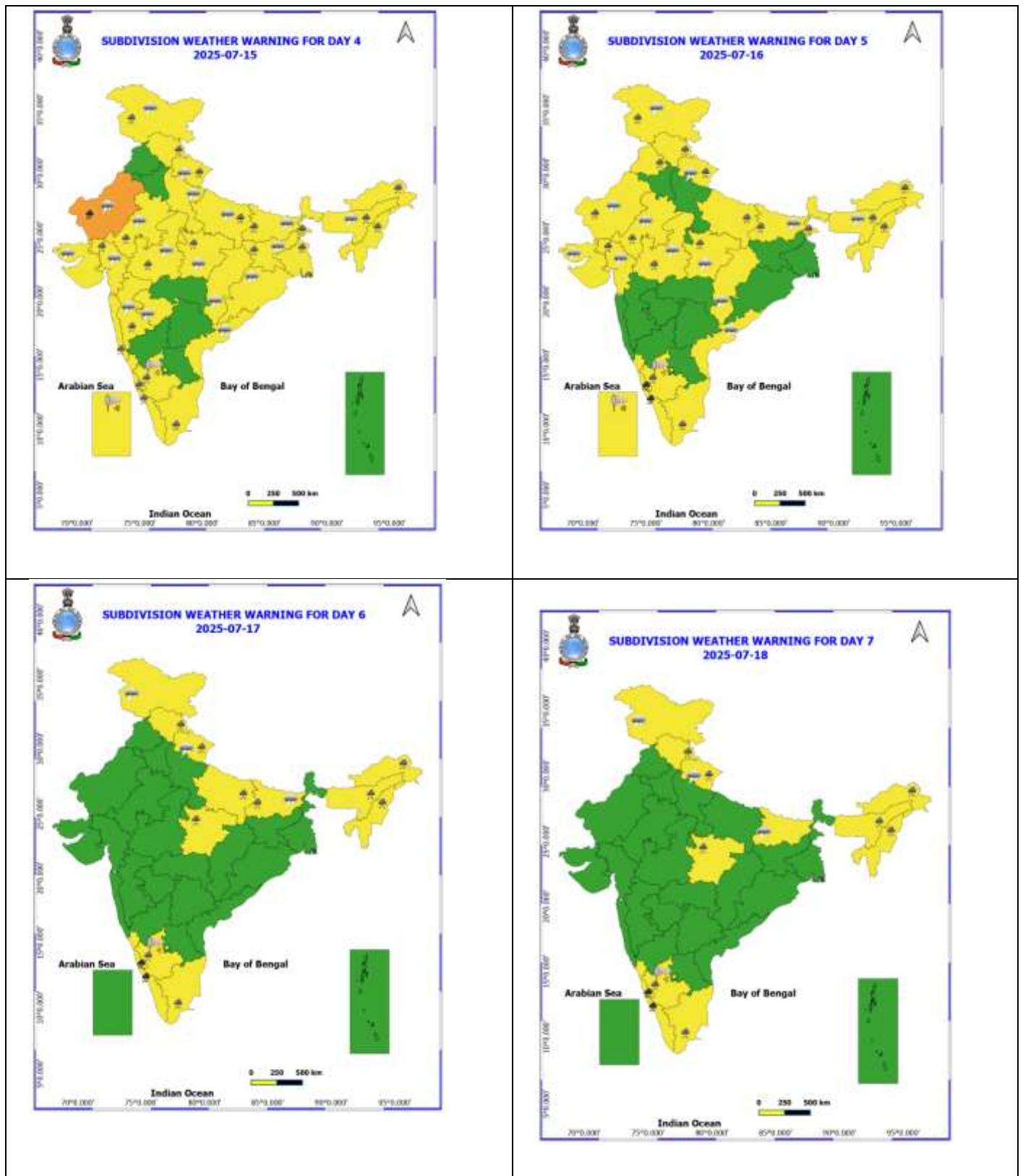
- ❖ **Jammu-Kashmir:** Baramulla 59, Kupwara 39, Kathua 37, Rambagh 30;
- ❖ **Tamil Nadu:** Natham_Isro 56, Vedsandur 56, Tenkasi 46, Aduthurai 44, Kovilpatti 41, Erode 48, Kadavur Taluk Office 41;
- ❖ **Manipur:** ADC Moreh 52, Kamjong 48;
- ❖ **Arunachal Pradesh:** Shiyomi 50;
- ❖ **East Uttar Pradesh:** Fursatganj 54, Fatehpur 43;
- ❖ **Himachal Pradesh:** Neri 48, Seobagh 46, Kukumseri 39;
- ❖ **Madhya Maharashtra:** Mahabaleshwar (Satara) 46;
- ❖ **West Uttar Pradesh:** Jalaun 41;
- ❖ **Saurashtra & Kutch:** Dhari 41.

ANNEXURE II

Table-1								
7 Days Rainfall Forecast								
S.No.	Subdivision	12- Jul	13- Jul	14- Jul	15- Jul	16- Jul	17- Jul	18- Jul
		Day 1	Day 2	Day 3	Day 4	Day 5	Day 6	Day 7
1	ANDAMAN & NICOBAR ISLANDS	FWS	FWS	WS	WS	WS	WS	WS
2	ARUNACHAL PRADESH	ISOL	SCT	FWS	FWS	SCT	SCT	FWS
3	ASSAM & MEHGHALAYA	SCT	FWS	FWS	FWS	FWS	FWS	FWS
4	NAGALAND, MANIPUR, MIZORAM AND TRIPURA	SCT	SCT	FWS	FWS	FWS	FWS	FWS
5	SUB HIMALAYAN WEST BENGAL & SIKKIM	SCT	FWS	FWS	FWS	FWS	FWS	FWS
6	GANGETIC WEST BENGAL	FWS	WS	WS	WS	FWS	FWS	FWS
7	ODISHA	SCT	FWS	FWS	FWS	FWS	FWS	FWS
8	JHARKHAND	FWS	WS	WS	WS	WS	FWS	FWS
9	BIHAR	ISOL	SCT	SCT	FWS	FWS	FWS	SCT
10	EAST UTTAR PRADESH	SCT	FWS	FWS	FWS	FWS	FWS	SCT
11	WEST UTTAR PRADESH	SCT	SCT	FWS	FWS	FWS	FWS	SCT
12	UTTARAKHAND	FWS	WS	FWS	FWS	FWS	FWS	FWS
13	HARYANA, CHANDIGARH & DELHI	ISOL	SCT	FWS	SCT	SCT	FWS	SCT
14	PUNJAB	ISOL	ISOL	SCT	SCT	SCT	FWS	SCT
15	HIMACHAL PRADESH	SCT	FWS	FWS	FWS	WS	WS	FWS
16	JAMMU AND KASHMIR AND LADAKH	SCT	SCT	SCT	FWS	FWS	FWS	SCT
17	WEST RAJASTHAN	SCT	FWS	FWS	FWS	FWS	SCT	ISOL
18	EAST RAJASTHAN	FWS	FWS	WS	FWS	FWS	SCT	SCT
19	WEST MADHYA PRADESH	WS	WS	WS	FWS	FWS	FWS	FWS
20	EAST MADHYA PRADESH	WS	WS	FWS	FWS	FWS	FWS	FWS
21	GUJRAT REGION	FWS	WS	WS	WS	FWS	FWS	FWS
22	SAURASHTRA & KUTCH	SCT	FWS	FWS	FWS	FWS	FWS	FWS
23	KONKAN & GOA	WS	WS	SCT	WS	FWS	FWS	FWS
24	MADHYA MAHARASHTRA	SCT	FWS	FWS	FWS	SCT	SCT	SCT
25	MARATHWADA	ISOL	ISOL	ISOL	ISOL	ISOL	ISOL	ISOL
26	VIDARBHA	SCT	SCT	ISOL	ISOL	SCT	FWS	FWS
27	CHHATTISGARH	FWS	FWS	SCT	SCT	SCT	FWS	FWS
28	COASTAL ANDHRA PRADESH	ISOL	ISOL	ISOL	ISOL	SCT	FWS	FWS
29	TELANGANA	SCT	ISOL	ISOL	ISOL	SCT	FWS	FWS
30	RAYALASEEMA	ISOL	ISOL	ISOL	ISOL	SCT	FWS	FWS
31	TAMILNADU & PUDUCHERRY	SCT	ISOL	ISOL	ISOL	SCT	SCT	SCT
32	COSTAL KARNATAKA	WS	WS	WS	WS	WS	WS	WS
33	NORTH INTERIOR KARNATAKA	SCT	SCT	SCT	FWS	FWS	FWS	WS
34	SOUTH INTERIOR KARNATAKA	FWS	FWS	FWS	FWS	FWS	FWS	WS
35	KERALA AND MAHE	WS	WS	WS	WS	WS	WS	WS
36	LAKSHADWEEP	WS	WS	WS	WS	WS	WS	WS

- As the lead period increases forecast accuracy decrease.





- Action may be taken based on ORANGE AND REDCOLOUR warnings.
- Vulnerable regions likely urban and hilly areas action may be initiated for heavy rainfall warning.
- As the lead period increases forecast accuracy decreases.

Detailed districtwise Multi Hazard weather warning for next five days available at <https://mausam.imd.gov.in/responsive/districtWiseWarningGIS.php>

Weather forecast over Delhi/NCR during 12th to 15th July 2025**Past Weather:**

There has been rise in the minimum temperature up to 1°C and rise in maximum temperature up to 2 to 4°C over Delhi/NCR during the past 24 hours. The maximum and minimum temperatures over Delhi were around 32 to 33°C and 24 to 26°C respectively. The minimum temperature was below normal up to 1 to 2°C and the maximum temperature was below normal up to 2 to 3 °C. Partly cloudy sky conditions with predominant surface wind from the southwest direction with wind speeds up to 12 kmph prevailed during the past 24 hours. Light rainfall has been recorded in most places of Delhi. Partly cloudy sky conditions with a windspeed of less than 06 kmph from the southwest direction prevailed over the region in the forenoon today.

Weather Forecast:

12.07.2025: Partly cloudy sky. Very light to Light rain at isolated places accompanied with thunderstorms/lightning. The maximum temperatures over Delhi are likely to be in the range of 34 to 36°C. The maximum temperature will be near normal. The predominant surface wind will likely be from the southwest direction with a wind speed of less than 15 kmph in the afternoon. The wind speed will gradually decrease becoming 08-12 kmph from the northwest direction during evening and night.

13.07.2025: Partly cloudy sky. Very light to light rain accompanied with thunderstorms/lightning. The maximum and minimum temperatures over Delhi are likely to be in the range of 35 to 37°C and 25 to 27°C respectively. The minimum temperature will be below normal up to 1 to 2°C, and the maximum temperature will be near normal. The predominant surface wind will likely be from the northwest direction with a wind speed of less than 10 kmph during the morning hours. The wind speed will gradually increase becoming less than 15 kmph from the southwest direction in the afternoon. It will decrease to less than 12 kmph from the southwest direction during the evening and night.

14.07.2025: Partly cloudy sky. Light rain accompanied by thunderstorms/lightning. The maximum and minimum temperatures over Delhi are likely to be in the range of 32 to 34°C and 25 to 27°C, respectively. The minimum temperature will be below normal up to 1 to 2°C, and the maximum temperature will be below normal up to 1 to 2°C. The predominant surface wind will likely be from the south direction with a wind speed of less than 10 kmph during the morning hours. The wind speed will gradually increase becoming less than 12 kmph from the northeast direction in the afternoon. It will decrease to less than 10 kmph from the northeast direction during the evening and night.

15.07.2025: Partly cloudy sky. Light rain accompanied by thunderstorms/lightning. The maximum and minimum temperatures over Delhi are likely to be in the range of 32 to 34°C and 22 to 24°C respectively. The minimum temperature will be below normal up to 2 to 4°C and the maximum temperature will be below normal up to 1 to 3 °C. The predominant surface wind will likely be from the southeast direction with a wind speed of less than 15 kmph during the morning hours. The wind speed will gradually increase, becoming less than 18 kmph from the southeast direction in the afternoon. It will decrease to less than 12 kmph from the southeast direction during the evening and night.

Impact expected and Action Suggested due to light rainfall with thunderstorm/lightning:

- Be cautious and take precautionary measures, though there is the likelihood of thunderstorms/lightning.
- Damage to standing crops, Minor to major damage to power and communication lines due to breaking of branches, Partial damage to vulnerable structures due to strong winds, Loose objects may fly.
- People are advised to keep a watch on the weather for worsening conditions and be ready to move to safer places accordingly, stay indoors, close windows & doors and avoid travel if possible, take safe shelters; do not take shelter under trees, do not lie on concrete floors and do not lean against concrete walls, unplug electrical/ electronic appliances, immediately get out of water bodies, keep away from all the objects that conduct electricity.

Impact & Action Suggested

- ✓ **Very heavy rainfall** over Uttar Pradesh on 12th; Uttarakhand on 13th; East Rajasthan & Madhya Pradesh during 12th-14th; West Rajasthan during 13th-15th; Gujarat Region on 13th & 14th July.

Impact Expected

- Localized Flooding of roads, water logging in low lying areas and closure of underpasses mainly in urban areas of the above region.
- Occasional reduction in visibility due to heavy rainfall.
- Disruption of traffic in major cities due to water logging in roads leading to increased travel time.
- Minor damage to kutch roads.
- Possibilities of damage to vulnerable structure.
- Localized Landslides/Mudslides/landslips/mudslips/landsinks/mudsinks.
- Damage to horticulture and standing crops in some areas due to inundation.
- It may lead to riverine flooding in some river catchments (for riverine flooding please visit Web page of CWC)

Action Suggested

- Check for traffic congestion on your route before leaving for your destination.
- Follow any traffic advisories that are issued in this regard.
- Avoid going to areas that face the water logging problems often.
- Avoid staying in vulnerable structure.

Agromet advisories for likely impact of Heavy / Heavy to Very Heavy Rainfall

- Drain out excess water from rice nurseries and fields of soybean, maize and vegetables in **Kymore Plateau and Satpura Hill Zone of Madhya Pradesh** and from rice nurseries and sugarcane in **Central Narmada Valley Zone**. Ensure proper drainage facilities in the fields of maize, soybean and vegetables in **Satpura Plateau zone**, soybean and vegetables in **Vindhya Plateau Zone**, soybean and pearl millet in **Malwa Plateau Zone** and soybean, maize, cotton and black gram in **Jhabua Hills Zone**. In **Central Narmada Valley Zone**, avoid sowing of soybean and maize crop till cessation of heavy rains.
- Make proper arrangements for drainage in standing crops and vegetable nurseries in **Eastern Plain Zone of Uttar Pradesh**, fields of rice, pulses (black gram, pigeon pea etc.) and groundnut in **Central Plain Zone** and fields of paddy, spring sugarcane, pigeon pea, maize and vegetables in **South Western Semi-Arid Zone**. In **Chitrakoot district**, avoid sowing of sesame and pearl millet and nursery sowing of vegetables (chilli, brinjal, tomato, cabbage and bitter gourd) during heavy rainfall.
- Make provision to drain out excess water from rice nurseries and fields of maize, soybean and black gram in **Southeastern Humid Plain Zone of East Rajasthan**, from fields of pearl millet, sesame, black gram and vegetables in **Flood Prone Eastern Plain Zone** and from soybean, maize, cotton and groundnut fields in **Southern Humid Plain Zone**.
- Maintain proper drainage in fields of maize, finger millet, kidney beans and vegetables and fruit orchards in **High Hills Sub Temperate Wet Zone of Himachal Pradesh**, vegetable and maize fields in **Mid Hills Sub Humid Zone** and maize fields in **Sub Montane and Low Hills Sub Tropical Zone**.
- In **Uttarakhand**, ensure proper drainage facilities in soybean, maize, barnyard millet, finger millet, pigeon pea, kidney beans, vegetables and orchards. Harvest matured vegetables and fruits and store in safe place.
- Drain out excess water from rice nurseries, transplanted rice fields and plantations of arecanut and coconut in **Coastal Zone of Coastal Karnataka** and from rice nurseries and fields of maize, cotton and ginger and plantations of arecanut in **Hill Zone**.

Livestock / Fishery

- Keep the animals inside the shed during heavy rainfall and provide them balanced feed.
- Store feed and fodder in a safe place to prevent spoilage.
- Construct an outlet with proper netting around the ponds to drain out excess water, thereby preventing fish from escaping in case of overflow.

Agromet advisories for likely impact of Thunderstorm / Gusty Winds / Squally Winds

- Provide mechanical support to horticultural crops and staking or support to vegetables and young fruit plants / fruit-bearing plants to avoid lodging due to strong winds.

Flash flood guidance:

24 hours Outlook for the Flash Flood Risk (FFR) till 1130 IST of 13-07-2025 :

Low to Moderate flash flood risk likely over few watersheds & neighbourhoods of following Met Sub-divisions during next 24 hours.

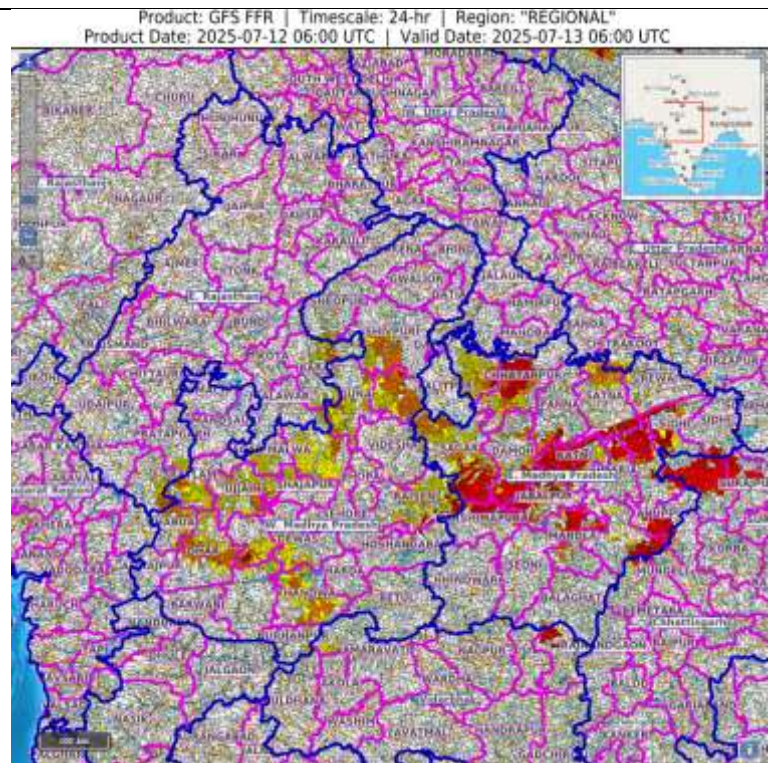
East Madhya Pradesh - Anuppur, Balaghat, Chhindwara, Chhattarpur, Damoh, Dindori, Jabalpur, Katni, Mandla, Narshimpura, Sagar, Satna, Seoni, Shahdol, Sidhi and Umaria districts.

West Madhya Pradesh - Agar-Malwa, Ashoknagar, Betul, Bhopal, Dewas, Dhar, Guna, Raisen, Rajgarh, Sehore, Sheopur, Shivpuri, Ujjain, Videsha, Mandsaur, Nimach and Hoshangabad districts.

Chhattisgarh - Surajpur, and Mungeli districts

East Rajsthan - Banswara, Pratapgarh, Baran and Jhalawar districts

Surface runoff/ Inundation may occur at some fully saturated soils & low-lying areas over Area of Concern (AoC) as shown in map due to expected rainfall occurrence in next 24 hours.



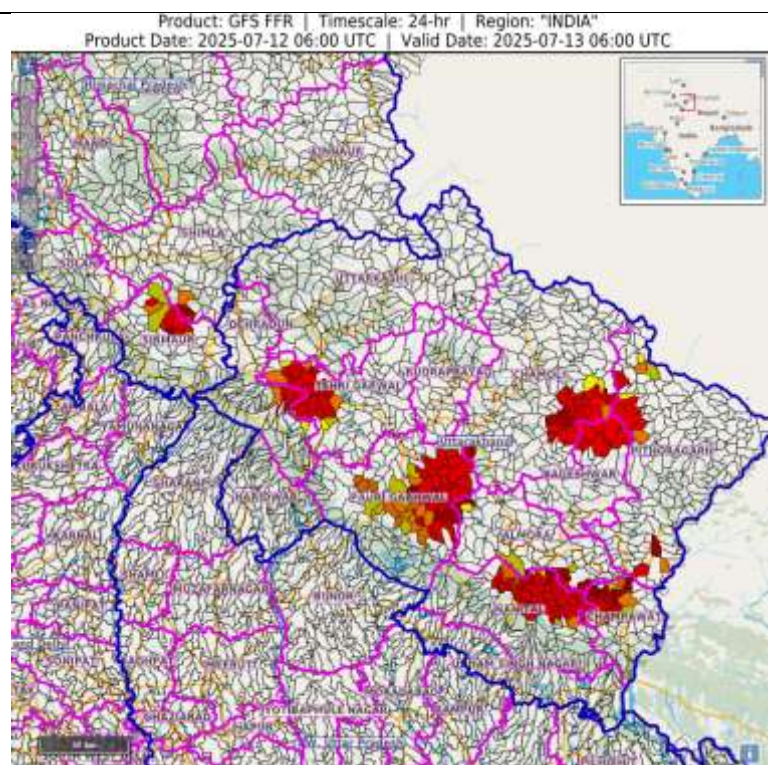
24 hours Outlook for the Flash Flood Risk (FFR) till 1130 IST of 13-07-2025 :

Low to Moderate flash flood risk likely over few watersheds & neighbourhoods of following Met Sub-divisions during next 24 hours.

Himachal Pradesh -, Shimla, Sirmaur districts.

Uttarakhand - Bageshwar, Chamoli, Champawat, Pauri Garhwal, Pithoragarh, Tehri Garwal, Nainital districts.

Surface runoff/ Inundation may occur at some fully saturated soils & low-lying areas over Area of Concern (AoC) as shown in map due to expected rainfall occurrence in next 24 hours.



24 hours Outlook for the Flash Flood Risk (FFR) till 1130 IST of 05-07-2025:

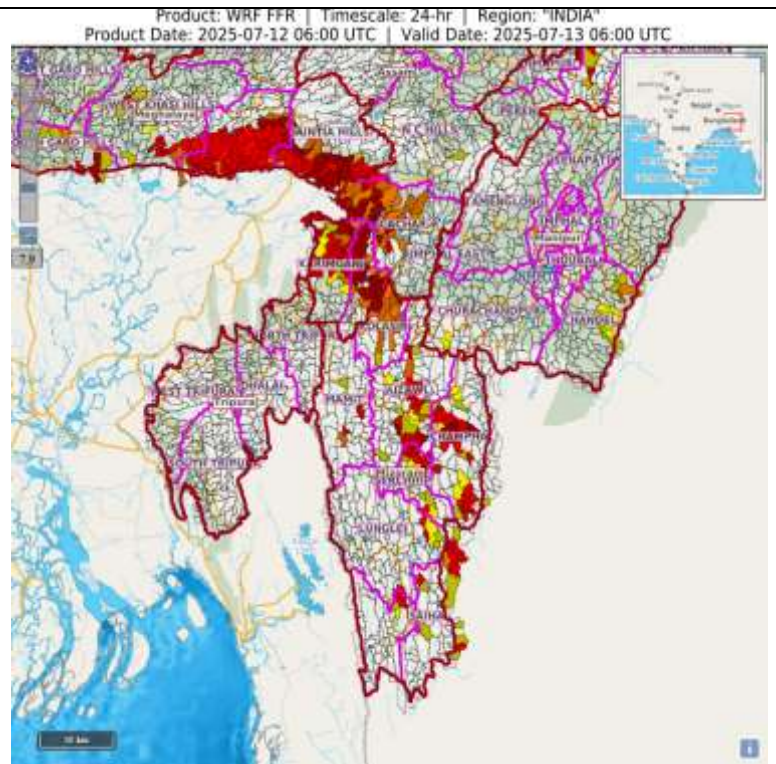
Low to Moderate flash flood risk likely over few watersheds & neighbourhoods of following Met Sub-divisions during next 24 hours.

Assam & Meghalaya – Karimganj, Cachar, NC Hills, Karbi Analog, Jaintia Hills, RI Bhoi, East Garo Hills, East Khasi Hills, West Khasi Hills districts

Nagaland Mizoram Manipur Tripura (NMMT) –

Manipur- Chandel, Churachandpur, Mizoram- Aizawl, Champhai, Saiha, Kolasib, Mamit, and Lunglei districts

Surface runoff/ Inundation may occur at some fully saturated soils & low-lying areas over Area of Concern (AoC) as shown in map due to expected rainfall occurrence in next 24 hours.



Legends & abbreviations:

- ❖ **Heavy Rain:**64.5-115.5mm; **Very Heavy Rain:**115.6-204.4mm; **Extremely Heavy Rain:** >204.4mm.
- ❖ **Obsy:** Observatory; **Automatic Weather Station;** **ARG:** Automatic Rain Gauge; **dist:** District; **NH:** National Highway; **KVK:** Krishi Vigyan Kendra; **DVC:** Damodar Valley Corporation; **PTO:** Part Time Office, **Aero:** Aerodrome, **IAF:** Indian Air Force.
- ❖ **Region wise classification of meteorological Sub-Divisions:**
 - **Northwest India:** Western Himalayan Region (Jammu-Kashmir-Ladakh-Gilgit-Baltistan-Muzaffarabad, Himachal Pradesh and Uttarakhand); Punjab, Haryana-Chandigarh-Delhi; West Uttar Pradesh, East Uttar Pradesh, West Rajasthan and East Rajasthan.
 - **Central India:** West Madhya Pradesh, East Madhya Pradesh, Vidarbha and Chhattisgarh.
 - **East India:** Bihar, Jharkhand, Sub-Himalayan West Bengal & Sikkim; Gangetic West Bengal, Odisha and Andaman & Nicobar Islands.
 - **Northeast India:** Arunachal Pradesh, Assam & Meghalaya and Nagaland, Manipur, Mizoram & Tripura.
 - **West India:** Gujarat Region, Saurashtra & Kutch, Konkan & Goa, Madhya Maharashtra and Marathawada.
 - **South India:** Coastal Andhra Pradesh & Yanam, Telangana, Rayalaseema, Coastal Karnataka, North Interior Karnataka, South Interior Karnataka, Kerala & Mahe, Tamil Nadu, Puducherry & Karaikal and Lakshadweep.

LEGENDS

1. अंडमान और निकोबार द्वीपसमूह

2. अरुणाचल प्रदेश

3. असम और मेघालय

4. नागालैंड, मणिपुर, मिजोरम और त्रिपुरा

5. उप-हिमालयी पश्चिम बंगाल और सिक्किम

6. गंगीय पश्चिम बंगाल

7. ओडिशा

8. झारखंड

9. बिहार

10. पूर्वी उत्तर प्रदेश

11. पश्चिम उत्तर प्रदेश

12. उत्तराखंड

13. हरियाणा, चंडीगढ़ और दिल्ली

14. पंजाब

15. हिमाचल प्रदेश

16. जम्मू और कश्मीर और लद्दाख

17. पश्चिम राजस्थान

18. पूर्वी राजस्थान

19. पश्चिम मध्य प्रदेश

20. पूर्वी मध्य प्रदेश

21. गुजरात

22. सौराष्ट्र

23. कोंकण और गोवा

24. मध्य महाराष्ट्र

25. मराठवाड़ा

26. विदर्भ

27. छत्तीसगढ़

28. तटीय आंध्र प्रदेश और यनम

29. तेलंगाना

30. रायलसीमा

31. तमिलनाडु, पुडुचेरी और कराईकल

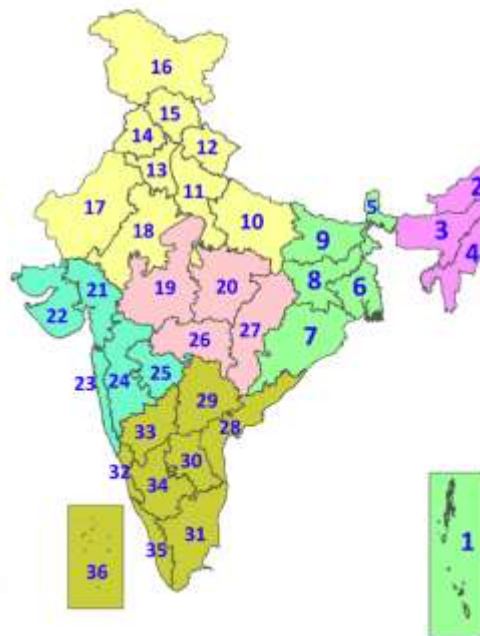
32. तटीय कर्नाटक

33. आंतरिक उत्तरी कर्नाटक

34. आंतरिक दक्षिणी कर्नाटक

35. केरल और माहे

36. लक्षद्वीप



1. Andaman & Nicobar Islands

2. Arunachal Pradesh

3. Assam & Meghalaya

4. Nagaland, Manipur, Mizoram & Tripura

5. Sub-Himalayan West Bengal & Sikkim

6. Gangetic West Bengal

7. Odisha

8. Jharkhand

9. Bihar

10. East Uttar Pradesh

11. West Uttar Pradesh

12. Uttarakhand

13. Haryana, Chandigarh & Delhi

14. Punjab

15. Himachal Pradesh

16. Jammu & Kashmir and Ladakh

17. West Rajasthan

18. East Rajasthan

19. West Madhya Pradesh

20. East Madhya Pradesh

21. Gujarat

22. Saurashtra

23. Konkan & Goa

24. Madhya Maharashtra

25. Marathwada

26. Vidarbha

27. Chhattisgarh

28. Coastal Andhra Pradesh & Yanam

29. Telangana

30. Rayalaseema

31. Tamilnadu, Puducherry & Karaikal

32. Coastal Karnataka

33. North Interior Karnataka

34. South Interior Karnataka

35. Kerala & Mahe

36. Lakshadweep

SPATIAL DISTRIBUTION (% of Stations reporting)

% Stations	Category	% Stations	Category
76-100	Widespread (WS/Most Places)	26-50	Scattered (SCT/A Few Places)
51-75	Fairly Widespread (FWS/Many Places)	1-25	Isolated (ISOL)



Fog



Heavy Snow



Cold Wave



Heavy Rain



Dust Storm



Cold Day



Very Heavy Rain



Heat Wave



Ground Frost



Extremely Heavy Rain



Warm Night



Thunder & Lightning



Hot Day



Hailstorm



Hot & Humid



Dust Raising Winds



Strong Surface Winds

COLOUR CODED WARNING

No Warning (No Action)

Watch (Be Aware)

Alert (Be Prepared To Take Action)

Warning (Take Action)

Probabilistic Forecast

Terms	Probability of Occurrence (%)
Unlikely	< 25
Likely	25 - 50
Very Likely	50 - 75
Most Likely	> 75

* Red colour warning does not mean "Red Alert", Red colour warning means "Take Action".

Forecast and Warning for any day is valid from 0830 hours IST of day till 0830 hours IST of next day.

For more details, kindly visit <https://mausam.imd.gov.in> or contact: 011-2434-4599

(Service to the Nation since 1875)

DEFINITION/CRITERIA

Rain/ Snow *

Heavy: 64.5 to 115.5 mm/cm *
Very Heavy: 115.6 to 204.4 mm/cm *
Extremely Heavy: > 204.4 mm/cm *

Heat Wave

When maximum temperature of a station reaches $\geq 40^{\circ}\text{C}$ for plains and $\geq 30^{\circ}\text{C}$ for hilly regions

(a) Based on Departure from normal

Heat Wave: Maximum Temperature Departure from normal 4.5°C to 6.4°C .

Severe Heat Wave: Maximum Temperature Departure from normal $\geq 6.5^{\circ}\text{C}$

(b). Based on Actual maximum temperature

Heat Wave: When actual maximum temperature $\geq 45^{\circ}\text{C}$.

Severe Heat Wave: When actual maximum temperature $\geq 47^{\circ}\text{C}$.

(c). Criteria for heat wave for coastal stations

When maximum temperature departure is $> 4.5^{\circ}\text{C}$ from normal. Heat Wave may be described provided maximum temperature $\geq 37^{\circ}\text{C}$.

Warm Night

When maximum temperature remains 40°C

Warm Night: When minimum temperature departure 4.5°C to 6.4°C .

Severe Warm Night: When minimum temperature departure $> 6.4^{\circ}\text{C}$.

Cold Wave

When minimum temperature of a station $\leq 10^{\circ}\text{C}$ for plains and $\leq 0^{\circ}\text{C}$ for hilly regions.

(a). Based on departure

Cold Wave: Minimum Temperature Departure from normal -4.5°C to -6.4°C .

Severe Cold Wave: Minimum Temperature Departure from normal $\leq -6.5^{\circ}\text{C}$

(b) Based on actual Minimum Temperature (for Plains only)

Cold Wave: When Minimum Temperature is $\leq 4.0^{\circ}\text{C}$

Severe Cold Wave: When Minimum Temperature is $\leq 2.0^{\circ}\text{C}$

(c) For Coastal Stations

When Minimum Temperature departure is $\leq -4.5^{\circ}\text{C}$ & actual Minimum Temperature is $\leq 15^{\circ}\text{C}$

Cold Day

When minimum temperature of a station $\leq 10^{\circ}\text{C}$ for plains and $\leq 0^{\circ}\text{C}$ for hilly regions

Based on departure

Cold Day: Maximum Temperature Departure from normal -4.5°C to -6.4°C .

Severe Cold Day: Maximum Temperature Departure from normal $\leq -6.5^{\circ}\text{C}$

Fog

Phenomenon of small droplets suspended in air and the horizontal visibility $< 1\text{km}$

Moderate Fog: When the visibility between 500-200 metres

Dense Fog: when the visibility between 50- 200 metres

Very Dense Fog: when the visibility < 50 metres

Thunderstorm

Sudden electrical discharges manifested by a flash of light (Lightning) and a sharp rumbling sound (thunder)

Dust/Sand Storm

An ensemble of particles of dust or sand energetically lifted to great heights by a strong and turbulent wind.

Frost

Ice deposits on ground

Air temperature $\leq 4^{\circ}\text{C}$ (over Plains)

Squall

A strong wind that rises suddenly, lasts for atleast 1 minute.

Moderate: Wind speed 52-61 kmph

Severe: Wind speed 62-67 kmph

Very Severe: Wind speed > 67 kmph

Sea State

Effect of various waves in the sea over specific area

Rough to very rough: Wind speed 41-62 kmph (22-33 knots) & Wave height 2.5-6 metre

High to very high: Wind speed 63-117 kmph (34-63 knots) & Wave height 6-14 metre

Phenomenal: Wind speed > 117 kmph (> 63 knots) & Wave height > 14 metre

Cyclone

Cyclonic Storm: Wind speed 62-87 kmph (34-47 knots)

Severe Cyclonic Storm: Wind speed 88-117 kmph (48-63 knots)

Very Severe Cyclonic Storm: Wind speed 118-165 kmph (64 - 89 knots)

Extremely Severe Cyclonic Storm: Wind speed 166-220 kmph (90 -119 knots)

Super Cyclone Storm: Wind speed > 220 kmph (> 119 knots)

* Red colour warning does not mean "Red Alert", Red colour warning means "Take Action".

Forecast and Warning for any day is valid from 0830 hours IST of day till 0830 hours IST of next day.

For more details, kindly visit <https://mausam.imd.gov.in> or contact: 011-2434-4599

(Service to the Nation since 1875)

Hot and Humid: When maximum temperatures remain 3°C above normal along with the above normal relative humidity.