



Government of India  
Ministry of Earth Sciences  
India Meteorological Department



Press Release

Date: 26<sup>th</sup> July, 2025

Time of Issue: 1400 hours IST

**Subject:** i) Under the influence of Depression over north Chhattisgarh & adjoining Jharkhand, extremely heavy rainfall likely over East Madhya Pradesh, Konkan, ghat areas of Madhya Maharashtra on 26<sup>th</sup>; West Madhya Pradesh, Gujarat Region on 26<sup>th</sup> & 27<sup>th</sup> and East Rajasthan on 27<sup>th</sup> & 28<sup>th</sup> July.  
ii) Monsoon conditions are likely to be in active phase over central India and along the west coast & adjoining ghat areas during next 3 days.

**Realised weather during past 24 hours till 0830 hours IST of today, the 26<sup>th</sup> July, 2025:**

- ❖ **Extremely heavy falls ( $\geq 21$  cm)** has been recorded at isolated places over ghat areas of Madhya Maharashtra and Coastal Karnataka.
- ❖ **Heavy to very heavy rainfall (7-20 cm)** has been recorded at isolated places over Uttarakhand, East Uttar Pradesh, East Rajasthan, Madhya Pradesh, Gujarat Region, Chhattisgarh, Odisha, Jharkhand, Sikkim, Konkan, South Interior Karnataka, Tamil Nadu, Puducherry & Karaikal; **Heavy rainfall (7-11 cm)** at isolated places over Haryana, Bihar, Arunachal Pradesh, Assam, Gangetic West Bengal, Vidarbha, Goa, Marathawada, Telangana, Coastal Andhra Pradesh and Kerala.

For more details of realised weather, kindly refer [Annexure I](#).

**i. Weather Systems, Forecast and Warnings (refer to Annexure II & III):**

- ❖ The Western end of monsoon trough runs south of its normal position and eastern end runs near its normal position at mean sea level.
- ❖ Yesterday's **Depression** over coastal West Bengal and adjoining areas of Northwest Bay of Bengal & Bangladesh moved west-northwestwards and lay centered at 0830 hrs IST of today, the 26<sup>th</sup> July over north Chhattisgarh & adjoining Jharkhand. It is very likely to move nearly westwards across north Chhattisgarh & East Madhya Pradesh and weaken gradually into a well marked low pressure area by tomorrow, the 27<sup>th</sup> July, 2025.
- ❖ An upper air cyclonic circulation lies over Punjab & adjoining Haryana in lower tropospheric levels.
- ❖ An off-shore trough at sea level runs along Gujarat- north Kerala coasts.
- ❖ An upper air cyclonic circulation lies over southwest Madhya Pradesh in lower & middle tropospheric levels.
- ❖ An upper air cyclonic circulation lies over south Gujarat in lower tropospheric levels.
- ❖ A Western Disturbance seen as a cyclonic circulation over Jammu & Kashmir & neighbourhood in lower & middle tropospheric levels.
- ❖ An upper air cyclonic circulation lies over northeast Assam in lower tropospheric levels.

Under the influence of these systems, the following weather is likely:

**East & Central India:**

- ✓ **Extremely heavy rainfall** is very likely at isolated places over West Madhya Pradesh on 26<sup>th</sup> & 27<sup>th</sup>; East Madhya Pradesh & Vidarbha on 26<sup>th</sup> July.
- ✓ Isolated **heavy rainfall** likely over Madhya Pradesh, Chhattisgarh, Gangetic West Bengal, Bihar during 26<sup>th</sup>-30<sup>th</sup>; Vidarbha on 27<sup>th</sup>; Sub-Himalayan West Bengal & Sikkim during 26<sup>th</sup>-28<sup>th</sup>, 31<sup>st</sup> July & 01<sup>st</sup> August; Jharkhand during 29<sup>th</sup>-31<sup>st</sup>; Odisha on 31<sup>st</sup> July with isolated **very heavy rainfall** over West Madhya Pradesh on 28<sup>th</sup> & 29<sup>th</sup>; East Madhya Pradesh on 27<sup>th</sup> & 28<sup>th</sup>; Chhattisgarh, Odisha, Jharkhand on 26<sup>th</sup>; Sub-Himalayan West Bengal & Sikkim on 27<sup>th</sup> July.

- ✓ Light to moderate rainfall at most/many places accompanied with thunderstorm, lightning & gusty winds (speed reaching 30-40 Kmph) likely over the region during next 5 days.

#### South Peninsular India:

- ✓ Isolated **heavy rainfall** likely over Tamil Nadu on 27<sup>th</sup>; Kerala & Mahe during 27<sup>th</sup>-30<sup>th</sup>; Coastal Karnataka during 26<sup>th</sup> July-01<sup>st</sup> August; North Interior Karnataka on 26<sup>th</sup> & 27<sup>th</sup>; South Interior Karnataka during 26<sup>th</sup>-29<sup>th</sup>; Coastal Andhra Pradesh & Yanam on 26<sup>th</sup> July with isolated **very heavy rainfall** over Tamil Nadu, Kerala & Mahe, Telangana on 26<sup>th</sup>; Coastal Karnataka during 26<sup>th</sup>-29<sup>th</sup>; Interior Karnataka on 26<sup>th</sup> & 27<sup>th</sup> July.
- ✓ **Strong surface winds** (speed reaching 40-50 kmph) very likely over South Peninsular India during next 5 days.
- ✓ Light to moderate rainfall at most/many places over Kerala & Mahe, Lakshadweep, Karnataka, Rayalaseema, Coastal Andhra Pradesh & Yanam and Telangana during next 7 days.

#### West India:

- ✓ **Extremely heavy rainfall** very likely at isolated places over Konkan, Ghat areas of Madhya Maharashtra on 26<sup>th</sup>; Gujarat Region on 26<sup>th</sup> & 27<sup>th</sup> July.
- ✓ Isolated **heavy rainfall** likely over Konkan & Goa, Gujarat Region during 26<sup>th</sup>-29<sup>th</sup>; Ghat areas of Madhya Maharashtra during 26<sup>th</sup>-30<sup>th</sup>; Saurashtra & Kutch during 26<sup>th</sup>-28<sup>th</sup> July with isolated **very heavy rainfall** over Konkan & Goa, Ghat areas of Madhya Maharashtra, Saurashtra & Kutch on 27<sup>th</sup>; Gujarat Region on 28<sup>th</sup> July.
- ✓ Light to moderate rainfall at many places very likely over the region during next 6-7 days.

#### Northwest India:

- ✓ **Extremely heavy rainfall** very likely at isolated places over East Rajasthan on 27<sup>th</sup> & 28<sup>th</sup> July.
- ✓ Isolated **very heavy rainfall over Himachal Pradesh on 29<sup>th</sup>; Uttarakhand on 27<sup>th</sup> & 28<sup>th</sup>; West Uttar Pradesh on 28<sup>th</sup>; West Rajasthan on 26<sup>th</sup>; East Rajasthan during 26<sup>th</sup>-30<sup>th</sup> July.**
- ✓ Isolated **heavy rainfall** likely over Jammu and Kashmir during 28<sup>th</sup>-30<sup>th</sup>; Himachal Pradesh during 27<sup>th</sup>-30<sup>th</sup>; Uttarakhand during 26<sup>th</sup> July-01<sup>st</sup> August; Haryana Chandigarh on 28<sup>th</sup> & 29<sup>th</sup>; West Uttar Pradesh during 26<sup>th</sup>-29<sup>th</sup>; East Uttar Pradesh on 26<sup>th</sup> & during 28<sup>th</sup>-30<sup>th</sup> July; Rajasthan during 26<sup>th</sup>-31<sup>st</sup> July.
- ✓ Light/moderate rainfall at many places accompanied with thunderstorm, lightning likely over Western Himalayan region and some places over the plains during next 7 days.

#### Northeast India:

- ✓ Light/moderate rainfall at many places accompanied with **thunderstorm, lightning and isolated heavy rainfall** likely to continue over Arunachal Pradesh, Assam & Meghalaya during 26<sup>th</sup> July-01<sup>st</sup> August; Nagaland, Manipur, Mizoram & Tripura during 26<sup>th</sup>-28<sup>th</sup> with **very heavy rainfall** over Arunachal Pradesh on 26<sup>th</sup> & 27<sup>th</sup>; Meghalaya on 27<sup>th</sup>; Mizoram & Tripura on 26<sup>th</sup> July.

#### Fishermen Warnings:

- ✓ Fishermen are advised to avoid venturing into the following from 26<sup>th</sup> July to 31<sup>st</sup> July 2025 to the following Areas:  
**Arabian Sea:**
  - ✓ Along and off Gujarat, Konkan, Goa, Karnataka, Kerala coasts and adjoining sea area during 26<sup>th</sup> to 31<sup>st</sup> July; over Lakshadweep, Maldives, Comorin areas, many parts of southeast, eastcentral, northeast Arabian Sea & some parts of southwest, few parts of westcentral Arabian Sea during 26<sup>th</sup> to 31<sup>st</sup> July; Along and off the Somalia coast and adjoining sea areas, south Oman and adjoining Yemen coast & adjoining sea areas during 26<sup>th</sup> to 31<sup>st</sup> July; southern parts of north Arabian Sea adjoining to central Arabian Sea during 26<sup>th</sup> to 31<sup>st</sup> July.**Bay of Bengal:**
  - ✓ Along and off Andhra Pradesh coast during 26<sup>th</sup> to 30<sup>th</sup> July; Odisha, Gangetic West Bengal, Bangladesh coasts during 26<sup>th</sup> to 29<sup>th</sup> July; Myanmar coast during 26<sup>th</sup> to 28<sup>th</sup> July; most parts of South Bay of Bengal during 26<sup>th</sup> to 28<sup>th</sup> July, many parts of south Bay of Bengal during 28<sup>th</sup> to 31<sup>st</sup> July; over central Bay of Bengal during 26<sup>th</sup> to 31<sup>st</sup> July; over north Bay of Bengal during 26<sup>th</sup> to 29<sup>th</sup> July; Gulf of Mannar during 26<sup>th</sup> to 31<sup>st</sup> July; Entire Andaman Sea during 26<sup>th</sup> July.
  - ✓ Total suspension of fishing operations is suggested over above mentioned areas and dates.

#### ii. Weather conditions and forecast over Delhi/NCR during 26<sup>th</sup> to 29<sup>th</sup> July, 2025 (Annexure IV)

For more details, kindly refer National Weather Bulletin:

[https://mausam.imd.gov.in/responsive/all\\_india\\_forecast\\_bulletin.php](https://mausam.imd.gov.in/responsive/all_india_forecast_bulletin.php)

For District wise warnings refer: <https://mausam.imd.gov.in/responsive/districtWiseWarningGIS.php>

### Rainfall recorded (in cm) during past 24 hours till 0830 hours IST of today, the 26<sup>th</sup> July:

- ❖ **Madhya Maharashtra:** Mahabaleshwar- Imd Obsy (dist Satara) 26, Lonavala\_agri (dist Pune) 18, Radhanagari (dist Kolhapur) 15, Ozarkhed - Fmo (dist Nashik) 14, Harsul - Fmo (dist Nashik) 11, Shahuwadi (dist Kolhapur) 10, Igatpuri (dist Nashik) 10, Chandgad (dist Kolhapur) 8, Trimbakshwar (dist Nashik) 8, Girnadam - Fmo (dist Nashik) 7;
- ❖ **Coastal Karnataka:** Manki (dist Uttara Kannada) 21, Gersoppa (dist Uttara Kannada) 19, Kumta (dist Uttara Kannada) 10, Yellapur (dist Uttara Kannada) 9, Siddapura (dist Udupi) 7, Ankola (dist Uttara Kannada) 7, Gokarna (dist Uttara Kannada) 7;
- ❖ **Konkan & Goa:** Matheran (dist Raigad) 20, Murbad (dist Thane) 17, Poladpur (dist Raigad) 15, Jawhar (dist Palghar) 12, Dapoli\_agri (dist Ratnagiri) 11, Karjat\_agri (dist Raigad) 11, Mhasla (dist Raigad) 11, Valpoi (dist North Goa) 11, Wada (dist Palghar) 10, Ambernath (dist Thane) 10, Vikramgad (dist Palghar) 10, Santacruz - Imd Obsy (dist Mumbai Suburban) 10, Mahad (dist Raigad) 9, Quepem (dist South Goa) 9, Wakwali\_agri (dist Ratnagiri) 9, Panvel\_agri (dist Raigad) 9, Khalapur (dist Raigad) 9, Pen (dist Raigad) 9, Sudhagad Pali (dist Raigad) 9, Sanguem (dist South Goa) 9, Mokhed - Fmo (dist Palghar) 9, Mandangad (dist Ratnagiri) 8, Tbia Imd Part Time (dist Thane) 8, Khed (dist Ratnagiri) 7, Bhiwandi (dist Thane) 7, Ponda (dist North Goa) 7, Thane (dist Thane) 7, Roha (dist Raigad) 7, Kudal (dist Sindhudurg) 7, Savarde - arg (dist Ratnagiri) 7, Ulhasnagar (dist Thane) 7;
- ❖ **Chhattisgarh:** Kusmi (dist Balrampur) 20, Samari (dist Balrampur) 14, Labhandih (dist Raipur) 13, Raipur (dist Raipur) 13, Dongargarh (dist Rajnandgaon) 13, Pratappur (dist Surajpur) 13, Balrampur (dist Balrampur) 12, Raipur City (dist Raipur) 12, Mukdega (dist Raigarh) 11, Odagi (dist Surajpur) 11, Mana-raipur-ap (dist Raipur) 10, Doura Kochali (dist Balrampur) 10, Ahiwara (dist Durg) 9, Pithora (dist Mahasamund) 9, Tongpaal (dist Sukma) 9, Chando (dist Balrampur) 9, Pondi Bachra (dist Koriya) 9, Bade Bachel (dist Dantewada) 9, Kunkuri (dist Jashpur) 9, Baloda Bazar (dist Baloda Bazar) 9, Mandir Hasoud (dist Raipur) 8, Bhilai (dist Durg) 8, Arang (dist Raipur) 8, Belargaon (dist Dhamtari) 7, Shankargarh (dist Balrampur) 7, Ramanujnagar (dist Surajpur) 7, Bilha (dist Bilaspur) 7, Marwahi (dist Gaurela Pendra Marwahi) 7, Bhaiyathan (dist Surajpur) 7, Mahasamund (dist Mahasamund) 7, Charama (dist Kanker) 7, Raigarh (dist Raigarh) 7, Ratanpur (dist Bilaspur) 7, Rajnandgaon (dist Rajnandgaon) 7;
- ❖ **Jharkhand:** Ghatsila (dist East Singhbhum), Manjhari (dist West Singhbhum) 19 Each; Kuru (dist Lohardaga), Majhgaon (dist West Singhbhum), Tantnagar (dist West Singhbhum), Hatgamharia (dist West Singhbhum) 12 Each; Mandar (dist Ranchi) 11; Chaibasa (dist West Singhbhum), Chandil (dist Seraikela-kharsawan), Arki (dist Khunti), Goilker (dist West Singhbhum), Musabani (dist East Singhbhum), Saryu (dist Latehar), Sisai (dist Gumla) 10 Each; Latehar Balumat Kvk AWS (dist Latehar), Gudri (dist West Singhbhum), Sonua (dist West Singhbhum), Kumardungi (dist West Singhbhum), Garu (dist Latehar) 9 Each; Jamshedpur (dist East Singhbhum), Diyakel Khunti Kvk AWS (dist Khunti) 8 Each; Latehar (dist Latehar), Kalebira (dist Simdega), Jamshedpur AP (dist East Singhbhum), Kharsema (dist Seraikela-kharsawan), Simdega (dist Simdega), Gumla (dist Gumla), Anandpur (dist West Singhbhum), Dhalbhumgarh (dist East Singhbhum), Gurabandha (dist East Singhbhum), Bharno (dist Gumla) 7 Each;
- ❖ **Odisha:** Muruda (Mayurbhanj) 18, Bahalda (Mayurbhanj) 17, Baripada (Mayurbhanj) 16, Jamda (Mayurbhanj) 16, Suliapada (Mayurbhanj) 14, Kusumi (Mayurbhanj) 13, Tensa (Sundargarh) 13, Gudvela (Bolangir) 13, Tiring (Mayurbhanj) 12, Raruana (Mayurbhanj) 12, Kaptipada (Mayurbhanj) 12, Sukruli (Mayurbhanj) 11, Rasagovindapur (Mayurbhanj) 10, Jharbandh (Bargarh) 10, Rairangpur (Mayurbhanj) 10, Samakhunta (Mayurbhanj) 10, Champua (Keonjargarh) 10, Saintala (Bolangir) 9, Karanjia (Mayurbhanj) 9, Joda (Keonjargarh) 9, Bijatala (Mayurbhanj) 9, Balimundali (Mayurbhanj) 9, Betanati (Mayurbhanj) 9, Paikmal (Bargarh) 8, Swam-patna (Keonjargarh) 8, Balisankara (Sundargarh) 7, Jhumpura (Keonjargarh) 7, Nawana (Mayurbhanj) 7, Chandua Kuliana (Mayurbhanj) 7, Kantamal (Boudhgarh) 7, Laikera (Jharsuguda) 7, Sharpada (Keonjargarh) 7;
- ❖ **East Madhya Pradesh:** Bajag (dist Dindori) 18, Gadarwara (dist Narsinghpur) 14, Mawai (dist Mandla) 14, Sidhi (gopadbanas) (dist Sidhi) 13, Singrauli-aws (dist Singrauli) 12, Kotma (dist Anuppur) 11, Baldevgarh (dist Tikamgarh) 11, Lanji (dist Balaghat) 11, Pushprajgarh (dist Anuppur) 11, Lalburra (dist Balaghat) 9, Rithi (dist Katni) 9, Jaitpur (dist Shahdol) 9, Mehadwani (dist Dindori) 8, Venkatnagar (dist Anuppur) 8, Khargapur (dist Tikamgarh) 8, Harrai (dist Chindwara) 8, Orchha (dist Niwari) 7, Mohgaon (dist Mandla) 7, Sarai (dist Singrauli) 7;
- ❖ **South Interior Karnataka:** Bhagamandala (dist Kodagu) 18, Agumbe Aws (dist Shivamogga) 17, Kottigehara (dist Chikkamagaluru) 16, Kammardi (dist Chikkamagaluru) 11, Kalasa (dist Chikkamagaluru) 9, Somwarpet (dist Kodagu) 7, Jayapura (dist Chikkamagaluru) 7, Koppa (dist Chikkamagaluru) 7, Sringeri Hms (dist Chikkamagaluru) 7;
- ❖ **Gujarat Region:** Kaprada (dist Valsad) 17, Silvassa (dist Dadara & Nagar Haveli) 15, Vapi (dist Valsad) 13, Madhbun (dist Dadara & Nagar Haveli) 11, Khanvel (dist Dadara & Nagar Haveli) 9, Nanipalson (dist Valsad) 8, Daman\_aws (dist Daman) 8;
- ❖ **East Rajasthan:** Dausa (dist Dausa) 16, Bayana (dist Bharatpur) 10, Chothkabarwara Sr (dist Sawai Madhopur) 8, Sarmathura Sr (dist Dholpur) 8, Anta Sr (dist Baran) 7, Udaipur-wati (dist Jhunjhunu) 7, Bassi (dist Jaipur) 7;
- ❖ **West Madhya Pradesh:** Udaipura (dist Raisen) 16, Biaora (dist Rajgarh) 14, Badi (dist Raisen) 14, Pipariya (dist Narmadapuram) 11, Sohagpur (dist Narmadapuram) 10, Satwas (dist Dewas) 9, Panchmarhi (dist Narmadapuram) 9, Kumbhraj (dist Guna) 9, Mehgaon (dist Bhind) 9, Bareli (dist Raisen) 9, Goharganj (dist Raisen) 9, Bairad (dist Shivpuri) 9, Gwalior (dist Gwalior) 8, Sultanpur (dist Raisen) 8, Chachoda (dist Guna) 8, Narwar (dist Shivpuri) 7, Budhni (dist Sehore) 7;
- ❖ **Sikkim:** Lava (dist Kalimpong) 15; Darjeeling (dist Darjeeling) 8; Amfu Kalimpong (dist Kalimpong) 7;
- ❖ **Uttarakhand:** Ganganagar (dist Rudrapur) 13, Mori (dist Uttarkashi) 9, Loharkhet (dist Bageshwar) 9, Kapkot (dist Bageshwar) 7;
- ❖ **Tamil Nadu:** Avalanche (dist Nilgiris) 12; Chinnakalar (dist Coimbatore) 8; Naduvattam (dist Nilgiris), Nalumukku (dist Tirunelveli), Oothu (dist Tirunelveli) 7 Each;
- ❖ **East Uttar Pradesh:** Chillaghat (dist Banda) 12, Kaiserganj (dist Bahraich) 11;
- ❖ **Telangana:** Palawancha (dist B. Kothagudem) 10, Kotgiri (dist Nizamabad) 7;



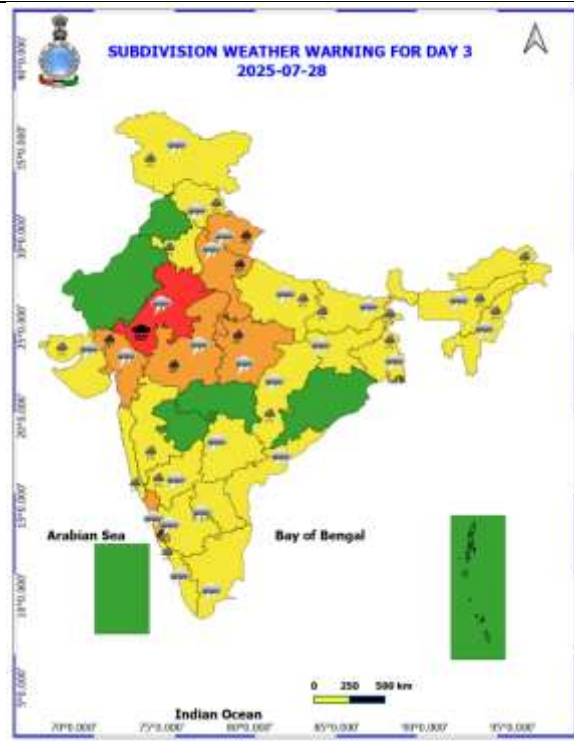
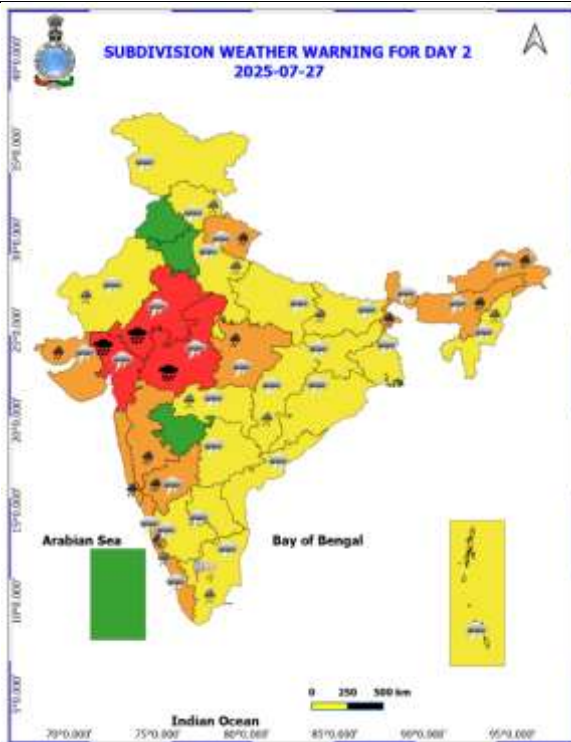
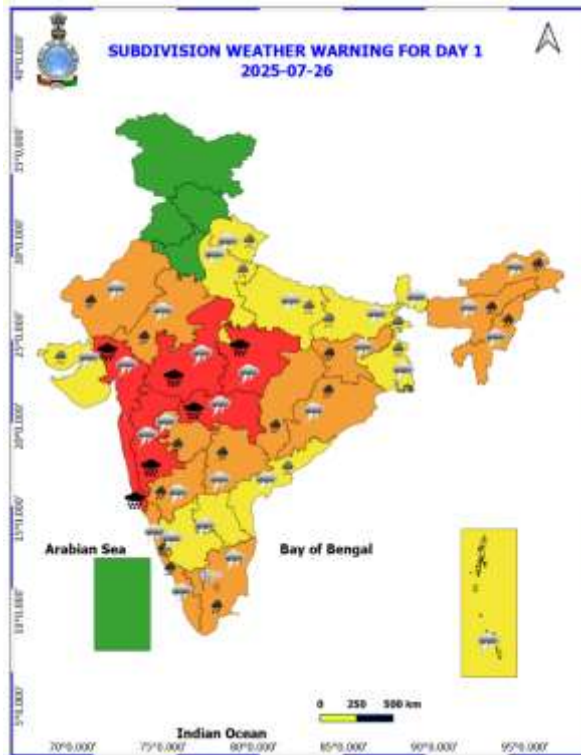
- ❖ **Kerala:** Munnar (dist Idukki) 9, Ambalavayal (dist Wayanad) 9, Ayyankunnu (dist Cannur) 9, Peermade (dist Idukki) 8, Udumbannoor, Cherouthni (dist Idukki) 7, Vellathooval (dist Idukki) 7;
- ❖ **Haryana:** Sohana (dist Gurgaon) 9;
- ❖ **Vidarbha:** Armori (dist Gadchiroli) 9, Gadchiroli (dist Gadchiroli) 9, Desaiganj (dist Gadchiroli) 9, Salekasa (dist Gondia) 8, Gondia Ap (dist Gondia) 8, Dhanora (dist Gadchiroli) 8, Gondia (dist Gondia) 8, Amgaon (dist Gondia) 7, Kurkheda (dist Gadchiroli) 7, Nagbhir (dist Chandrapur) 7, Saoli (dist Chandrapur) 7, Chikhaldia (dist Amraoti) 7;
- ❖ **Gangetic West Bengal:** Midnapore (dist West Midnapore) 9, Mohanpur (dist West Midnapore) 9, Midnapore(cwc) (dist West Midnapore) 9, Amta (dist Howrah) 7, Dum Dum (dist North 24 Parganas) 7, Canning (dist South 24 Parganas) 7, Uluberia (dist Howrah) 7;
- ❖ **Coastal Andhra Pradesh:** Velairpad (dist Eluru) 7, Kukunoor (dist Eluru) 6;
- ❖ **Marathwada:** Bhumi (dist Dharashiv) 7;
- ❖ **Arunachal Pradesh:** Anini AWS (dist Dibang Valley) 8;
- ❖ **Assam:** Numaligarh (dist Golaghat), Bokakhat ARG (dist Golaghat) 7 Each;
- ❖ **Bihar:** Giriak 7.

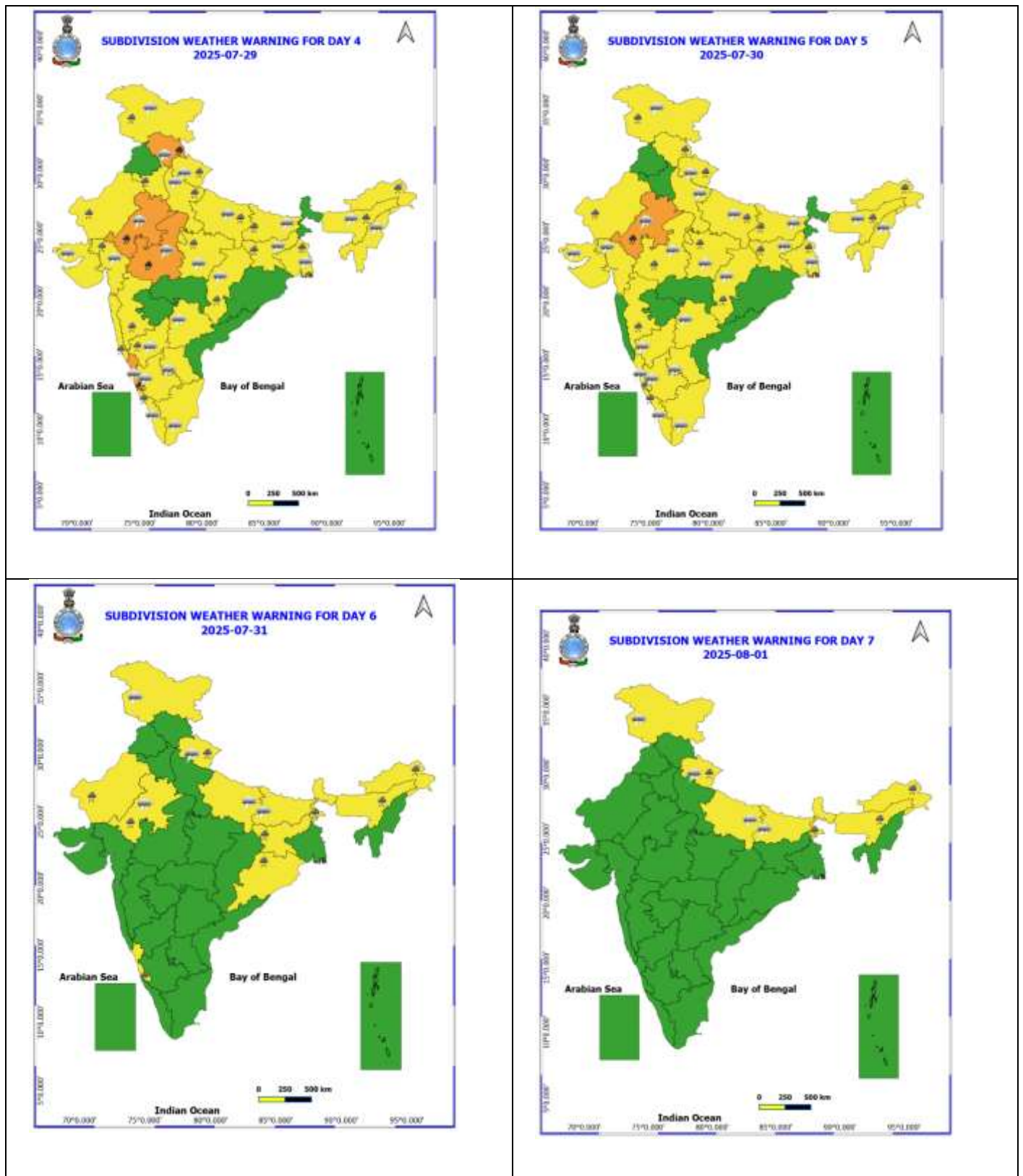
## ANNEXURE II

S.No.	Subdivision	26- Jul Day 1	27- Jul Day 2	28- Jul Day 3	29- Jul Day 4	30- Jul Day 5	31- Jul Day 6	1- Aug Day 7
1	ANDAMAN & NICOBAR ISLANDS	FWS	FWS	FWS	WS	WS	FWS	FWS
2	ARUNACHAL PRADESH	WS	WS	FWS	SCT	SCT	FWS	FWS
3	ASSAM & MEHGHALAYA	WS	WS	FWS	SCT	SCT	FWS	FWS
4	NAGALAND, MANIPUR, MIZORAM AND TRIPURA	WS	WS	FWS	SCT	SCT	SCT	SCT
5	SUB HIMALAYAN WEST BENGAL & SIKKIM	FWS	FWS	FWS	FWS	FWS	FWS	WS
6	GANGETIC WEST BENGAL	WS	FWS	WS	WS	WS	FWS	FWS
7	ODISHA	WS	FWS	SCT	FWS	FWS	FWS	SCT
8	JHARKHAND	WS	FWS	FWS	WS	WS	WS	WS
9	BIHAR	FWS	FWS	SCT	SCT	SCT	SCT	SCT
10	EAST UTTAR PRADESH	SCT	ISOL	FWS	FWS	FWS	SCT	SCT
11	WEST UTTAR PRADESH	SCT	SCT	FWS	SCT	SCT	SCT	SCT
12	UTTARAKHAND	FWS	WS	WS	WS	FWS	FWS	FWS
13	HARYANA, CHANDIGARH & DELHI	ISOL	SCT	FWS	FWS	SCT	SCT	FWS
14	PUNJAB	ISOL	ISOL	SCT	SCT	SCT	SCT	SCT
15	HIMACHAL PRADESH	SCT	FWS	WS	WS	FWS	FWS	FWS
16	JAMMU AND KASHMIR AND LADAKH	SCT	SCT	SCT	FWS	FWS	FWS	FWS
17	WEST RAJASTHAN	ISOL	SCT	SCT	SCT	SCT	FWS	SCT
18	EAST RAJASTHAN	FWS	WS	WS	WS	FWS	FWS	ISOL
19	WEST MADHYA PRADESH	WS	WS	WS	WS	FWS	FWS	FWS
20	EAST MADHYA PRADESH	WS	WS	WS	WS	WS	FWS	FWS
21	GUJRAT REGION	WS	WS	WS	WS	FWS	FWS	FWS
22	SAURASHTRA & KUTCH	FWS	WS	WS	WS	FWS	FWS	SCT
23	KONKAN & GOA	WS	WS	WS	WS	WS	WS	WS
24	MADHYA MAHARASHTRA	WS	FWS	SCT	SCT	ISOL	ISOL	ISOL
25	MARATHWADA	FWS	SCT	ISOL	ISOL	ISOL	ISOL	ISOL
26	VIDARBHA	WS	WS	FWS	FWS	FWS	SCT	SCT
27	CHHATTISGARH	WS	SCT	FWS	FWS	FWS	FWS	FWS
28	COASTAL ANDHRA PRADESH	FWS	SCT	SCT	ISOL	ISOL	ISOL	ISOL
29	TELANGANA	FWS	SCT	ISOL	ISOL	ISOL	ISOL	ISOL
30	RAYALASEEMA	SCT	ISOL	ISOL	ISOL	ISOL	ISOL	ISOL
31	TAMILNADU & PUDUCHERRY	ISOL	ISOL	ISOL	ISOL	ISOL	ISOL	ISOL
32	COSTAL KARNATAKA	WS	WS	WS	WS	WS	WS	WS
33	NORTH INTERIOR KARNATAKA	FWS	FWS	SCT	SCT	SCT	SCT	SCT
34	SOUTH INTERIOR KARNATAKA	FWS	FWS	SCT	SCT	SCT	SCT	SCT
35	KERALA AND MAHE	WS	WS	WS	WS	FWS	FWS	FWS
36	LAKSHADWEEP	WS	WS	FWS	FWS	FWS	FWS	FWS

- As the lead period increases forecast accuracy decrease.

## ANNEXURE III





- Action may be taken based on ORANGE AND REDCOLOUR warnings.
- Vulnerable regions likely urban and hilly areas action may be initiated for heavy rainfall warning.
- As the lead period increases forecast accuracy decreases.

Detailed districtwise Multi Hazard weather warning for next five days available at <https://mausam.imd.gov.in/responsive/districtWiseWarningGIS.php>



## Weather forecast over Delhi/NCR during 26<sup>th</sup> to 29<sup>th</sup> July 2025

### Past Weather:

There has been fall in the minimum temperature up to 1 - 2°C and rise in maximum temperature up to 1°C over Delhi/NCR during the past 24 hours. The maximum and minimum temperatures over Delhi were around 35 to 37°C and 25 to 27°C respectively. The minimum temperature was near normal and the maximum temperature was above normal up to 1 - 3°C. Partly cloudy sky conditions with predominant surface wind from the northwest direction with wind speeds up to 18 kmph prevailed during the past 24 hours. Very light to light rainfall has been recorded in many places with isolated place of moderate rainfall over Delhi. Generally cloudy sky conditions with a windspeed of less than 10 kmph from the southeast direction prevailed over the region in the forenoon today.

### Weather Forecast:

**26.07.2025:** Generally cloudy sky. Very light to light rain accompanied with thunderstorms/lightning. The maximum temperatures over Delhi are likely to be in the range of 34 to 36°C. The maximum temperature will be above normal up to 1 to 2°C. The predominant surface wind will likely be from the southeast direction with a wind speed of 08-10 kmph in the afternoon. The wind speed will gradually increase 10-15 kmph from the southeast direction during evening and night.

**27.07.2025:** Generally cloudy sky. Very light to light rain accompanied with thunderstorms/lightning. The maximum and minimum temperatures over Delhi are likely to be in the range of 33 to 35°C and 26 to 28°C respectively. The minimum temperature will be near normal and the maximum temperature will be below normal up to 1 to 2°C. The predominant surface wind will likely be from the southeast direction with a wind speed of less than 10-15 kmph during the morning hours. The wind speed will gradually increase becoming 12-16 kmph from the southeast direction in the afternoon. It will decrease becoming less than 12 kmph from the southeast direction during the evening and night.

**28.07.2025:** Generally cloudy sky. Light to moderate rain accompanied with thunderstorms/lightning. The maximum and minimum temperatures over Delhi are likely to be in the range of 31 to 33°C and 26 to 28°C respectively. The minimum temperature will be near normal and the maximum temperature will be below normal up to 1 to 3°C. The predominant surface wind will likely be from the southeast direction with a wind speed of less than 10 kmph during the morning hours. The wind speed will remain less than 15 kmph from the southeast direction in the afternoon. It will increase becoming less than 20 kmph from the southeast direction during the evening and night.

**29.07.2025:** Generally cloudy sky. Light to moderate rain accompanied with thunderstorm/lightning. The maximum and minimum temperatures over Delhi are likely to be in the range of 30 to 32°C and 25 to 27°C respectively. The minimum temperature will be below normal up to 1 to 2°C and the maximum temperature will be below normal up to 3 to 5°C. The predominant surface wind will likely be from the southeast direction with a wind speed of less than 20 kmph during the morning hours. The wind speed will gradually decrease becoming less than 15 kmph from the southeast direction in the afternoon. It will decrease becoming less than 12 kmph from the southeast direction during the evening and night.

### Impact expected and Action Suggested due to light to moderate rainfall with thunderstorm/lightning:

- Be cautious and take precautionary measures, though there is the likelihood of thunderstorms/lightning.
- Damage to standing crops, Minor to major damage to power and communication lines due to breaking of branches, Partial damage to vulnerable structures due to strong winds, Loose objects may fly.
- People are advised to keep a watch on the weather for worsening conditions and be ready to move to safer places accordingly, stay indoors, close windows & doors and avoid travel if possible, take safe shelters; do not take shelter under trees, do not lie on concrete floors and do not lean against concrete walls, unplug electrical/ electronic appliances, immediately get out of water bodies, keep away from all the objects that conduct electricity.

### Impact & Action Suggested due to

- ✓ **Extremely heavy rainfall** at isolated places over West Madhya Pradesh, Gujarat Region on 26<sup>th</sup> & 27<sup>th</sup>; East Madhya Pradesh & Vidarbha, Konkan, Ghat areas of Madhya Maharashtra on 26<sup>th</sup>; East Rajasthan on 27<sup>th</sup> & 28<sup>th</sup> July.
- ✓ **Very heavy rainfall** at isolated places over West Rajasthan, Chhattisgarh, Odisha, Jharkhand, Mizoram & Tripura, Tamil Nadu, Kerala & Mahe, Telangana on 26<sup>th</sup>; West Madhya Pradesh on 28<sup>th</sup> & 29<sup>th</sup>; East Madhya Pradesh, Uttarakhand on 27<sup>th</sup> & 28<sup>th</sup>; Meghalaya, Sub-Himalayan West Bengal & Sikkim, Konkan & Goa, Ghat areas of Madhya Maharashtra, Saurashtra & Kutch on 27<sup>th</sup>; Coastal Karnataka during 26<sup>th</sup>-29<sup>th</sup>; Interior Karnataka on 26<sup>th</sup> & 27<sup>th</sup>; West Uttar Pradesh, Gujarat Region on 28<sup>th</sup>; Himachal Pradesh on 29<sup>th</sup>; East Rajasthan during 26<sup>th</sup>-30<sup>th</sup>; Arunachal Pradesh on 26<sup>th</sup> & 27<sup>th</sup> July.

### Impact Expected

- Localized Flooding of roads, water logging in low lying areas and closure of underpasses mainly in urban areas of the above region.
- Occasional reduction in visibility due to heavy rainfall.
- Disruption of traffic in major cities due to water logging in roads leading to increased travel time.
- Minor damage to kutcha roads.
- Possibilities of damage to vulnerable structure.
- Localized Landslides/Mudslides/landslips/mudslips/landsinks/mudsinks.
- Damage to horticulture and standing crops in some areas due to inundation.
- It may lead to riverine flooding in some river catchments (for riverine flooding please visit Web page of CWC)

### Action Suggested

- Check for traffic congestion on your route before leaving for your destination.
- Follow any traffic advisories that are issued in this regard.
- Avoid going to areas that face the water logging problems often.
- Avoid staying in vulnerable structure.

### Agromet advisories for likely impact of Heavy / Heavy to Very Heavy / Extremely Heavy Rainfall

- **Maharashtra** - In **Konkan**, make arrangement to drain out excess water from rice, finger millet, turmeric, groundnut and newly planted coconut, arecanut, mango and cashew. Postpone transplanting of rice in **Raigad** and **Palghar** districts. In **Madhya Maharashtra**, postpone transplanting of rice in *ghat* areas of **Pune** and **Nashik** district. In **Marathwada**, make arrangements to drain out excess water from soybean, pearl millet, turmeric, sugarcane, orchards and vegetables. In **East Vidarbha**, postpone transplanting of rice and make arrangements for drainage of excess water from rice nurseries, orchards, vegetable nurseries, transplanted rice fields and already sown *kharif* crops like soybean, cotton and pigeon pea.
- In **Madhya Pradesh**, provide adequate drainage in the fields of soybean, rice, maize and pigeon pea in **Vindhyan Plateau Zone**; rice, maize and soybean in **Kymore Plateau and Satpura Hill Zone**; rice and vegetables in **Bundelkhand Zone**; maize, soybean, cotton, sugarcane and vegetables in **Satpura Plateau Zone**; rice, soybean, maize, sugarcane and vegetables in **Central Narmada Valley Zone**; soybean, pigeon pea, cotton and vegetables in **Nimar Valley Zone** and soybean, maize, cotton and vegetables in **Malwa Plateau Zone**. In **Gird Zone**, postpone sowing of pearl millet and make arrangement to drain out excess water in fields of soybean, pigeon pea and transplanted rice.
- In **Chhattisgarh**, drain out excess water from rice nurseries, soybean, pigeon pea, green gram, black gram, maize, sugarcane and vegetables in **Plain Zone** and rice, minor millets, maize, pulses and oilseeds in **Bastar Plateau Zone**. In **Northern Hill Zone**, postpone sowing of pigeon pea. Drain out excess water from the fields of transplanted rice, pulses and vegetables. Undertake staking / propping in banana and papaya.
- **Rajasthan** - In **Sub Humid Southern Plain and Aravali Hill Zone** and **Flood Prone Eastern Plain Zone**, postpone sowing of green gram, pearl millet, cluster bean and sesame; make arrangement for drainage and remove excess water from already sown fields. In **Southern Humid Plain Zone**, postpone sowing of maize during heavy rains and ensure proper drainage to remove excess water in cotton and soybean



during the germination stage. In **Southeastern Humid Plain zone**, make provision to drain out excess water from rice nurseries, maize, soybean and black gram at early vegetative stage.

- In **Gujarat**, make necessary arrangements to drain out excess water from sugarcane cotton, pigeon pea, transplanted rice and vegetables in **South Gujarat Zone**; sugarcane, rice and vegetables in **South Gujarat Heavy Rainfall Zone**; transplanted rice, cotton, pearl millet, pigeon pea, soybean and vegetables in **Middle Gujarat Zone**. Drain out excess water from ground nut, maize, pearl millet, green gram and sesame in **North Gujarat Zone**.
- In **Odisha**, postpone sowing of maize and transplanting of vegetables and drain out excess water from rice nurseries and fields of transplanted rice, maize, pulses, vegetable and plantation crops in **North Central Plateau Zone**. In **Mid Central Table Land Zone**, postpone sowing of sesame and groundnut and drain out excess water from the fields of rice, sugarcane, maize, sesame, groundnut, vegetables and plantations of banana and papaya. Drain out excess water from the fields of rice, maize, vegetables and fruit orchards in **West Central Table land Zone**; rice nurseries and transplanted rice fields, maize, pulses and vegetables in **North Eastern Plateau Zone**.
- **Jharkhand** - In **Western Plateau Zone**, start sowing of pigeon pea crop after cessation of the current spell of heavy rainfall. Avoid irrigation in standing crops and provide drainage facilities in fields of direct seeded rice, finger millet, maize, pigeon pea and green gram.
- In **Kerala**, provide adequate drainage in fields of rice, coconut, banana and ginger. Postpone nursery / transplanting of rice. Provide staking in vegetables.
- In **Karnataka**, postpone nursery sowing of rice and provide drainage in arecanut fields and banana orchards in **Coastal Zone**. In **Hill Zone**, make arrangements to drain out excess water from rice nurseries, fields of maize, cotton, ginger and plantations of arecanut. In **Southern Transition Zone**, provide proper drainage in arecanut and coconut fields. In **Southern Dry Zone**, provide staking / support to maize, tomato and banana crop. Ensure proper drainage to prevent waterlogging especially in rice, vegetables and spice crops.
- In **Telangana**, ensure proper drainage facilities in the fields of rice, maize, groundnut, cotton, soybean, red gram and vegetables.
- In **Uttarakhand**, maintain proper drainage channels in fields of rice in **Bhabar and Tarai Zone**, black gram in **Hill Zone** and rice, barnyard millet, finger millet and cucumber in **Sub Humid SubTropic Zone**.

#### **Livestock / Fishery**

- Keep the animals inside the shed during heavy rainfall and provide them balanced feed.
- Store feed and fodder in a safe place to prevent spoilage.
- Construct an outlet with proper netting around the ponds to drain out excess water, thereby preventing fish from escaping in case of overflow.

#### **Agromet advisories for likely impact of Thunderstorm / Gusty Winds / Squally Winds**

- Provide mechanical support to horticultural crops and staking or support to vegetables and young fruit plants / fruit-bearing plants to avoid lodging due to strong winds.

## Flash flood guidance:

24 hours Outlook for the Flash Flood Risk (FFR) till 1130 IST of 27-07-2025 :

Moderate to High flash flood risk likely over few watersheds & neighbourhoods of following Met Sub-divisions during next 24 hours.

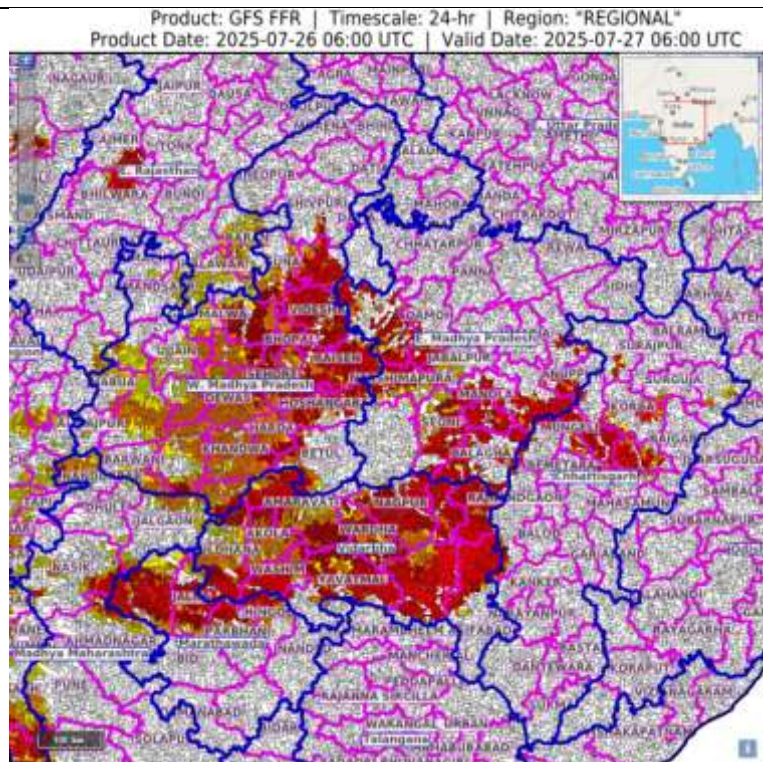
Chhattisgarh - Baloda Bazar, Bilaspur, Janjgir Champa, Kawardha, Korba, Korea, Mungeli, Rajnandgaon, Raipur, Surajpur and Surguja districts.

East Madhya Pradesh - Anuppur, Balaghat, Chhindwara, Damoh, Dindori, Jabalpur, Katni, Mandla, Narshimpura, Niwari, Sagar, Seoni, Shahdol, Singrauli, Tikamgarh and Umaria districts.

West Madhya Pradesh - Ashoknagar, Agar Malwa, Betul, Bharwani, Bhopal, Burhanpur, Dewas, Dhar, Guna, Harda, Indore, Jhabua, Kandwa, Khargone, Raisen, Rajgarh, Ratlam, Sehore, Shivpuri, Shajapur, Ujjain, Videsha and Hoshangabad districts.

Vidarbha - Amarawati, Akola, Bhandara, Chandrapur, Gadchiroli, Gondiya, Nagpur, Yavatmal, Washim and Wardha districts.

Surface runoff/ Inundation may occur at some fully saturated soils & low-lying areas over Area of Concern (AoC) as shown in map due to expected rainfall occurrence in next 24 hours.



24 hours Outlook for the Flash Flood Risk (FFR) till 1130 IST of 27-07-2025 :

Low to Moderate flood risk likely over few watersheds & neighbourhoods of following Met Sub-divisions during next 24 hours.

Coastal Karnataka - Dakshin Kannada, Udupi and Uttar Kannada districts.

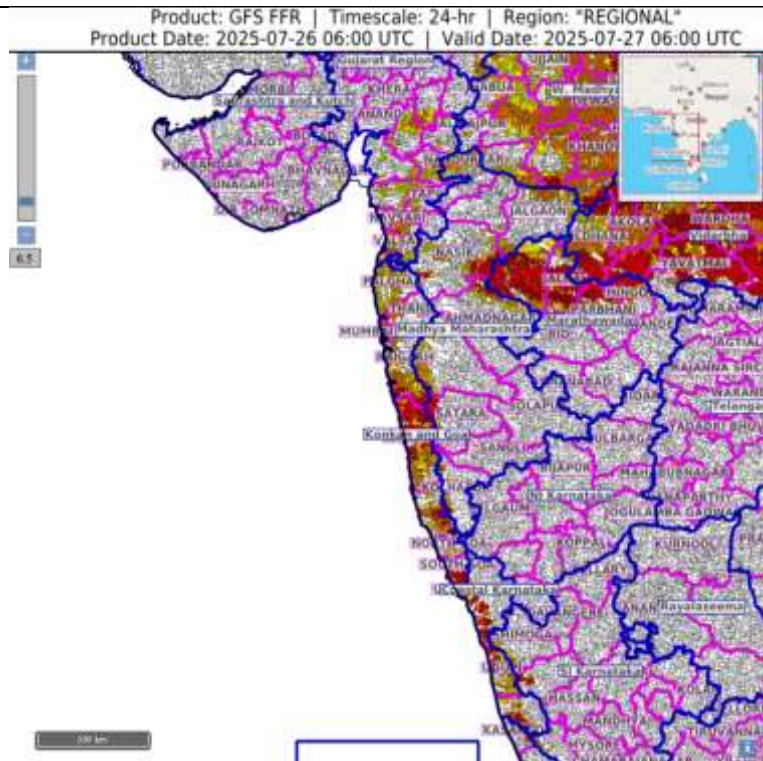
Gujarat Region - Panchmahal, Chhota Udaipur, Vadodara, Narmada, Bharuch, Surat, Tapi, Dangs, Navsari and Valsad districts

Madhya Maharashtra - Jalgaon, Nandurbar, Nasik, Ahmednagar, Pune and Satara districts

Marathwada - Aurangabad, Jalna, Parbhani and Hingoli districts.

Konkan & Goa - North Goa, South Goa, Mumbai City, Palghar, Raigarh, Ratnagiri, Sindhudurg, Suburban Mumbai and Thane districts.

Surface runoff/ Inundation may occur at some fully saturated soils & low-lying areas over Area of Concern (AoC) as shown in map due to expected rainfall occurrence in next 24 hours.



### **Legends & abbreviations:**

- ❖ **Heavy Rain:**64.5-115.5mm; **Very Heavy Rain:**115.6-204.4mm; **Extremely Heavy Rain:** >204.4mm.
- ❖ **Obsy:** Observatory; Automatic Weather Station; **ARG:** Automatic Rain Gauge; **dist:** District; **NH:** National Highway; **KVK:** Krishi Vigyan Kendra; **DVC:** Damodar Valley Corporation; **PTO:** Part Time Office, **Aero:** Aerodrome, **IAF:** Indian Air Force.
- ❖ **Region wise classification of meteorological Sub-Divisions:**
  - **Northwest India:** Western Himalayan Region (Jammu-Kashmir-Ladakh-Gilgit-Baltistan-Muzaffarabad, Himachal Pradesh and Uttarakhand); Punjab, Haryana-Chandigarh-Delhi; West Uttar Pradesh, East Uttar Pradesh, West Rajasthan and East Rajasthan.
  - **Central India:** West Madhya Pradesh, East Madhya Pradesh, Vidarbha and Chhattisgarh.
  - **East India:** Bihar, Jharkhand, Sub-Himalayan West Bengal & Sikkim; Gangetic West Bengal, Odisha and Andaman & Nicobar Islands.
  - **Northeast India:** Arunachal Pradesh, Assam & Meghalaya and Nagaland, Manipur, Mizoram & Tripura.
  - **West India:** Gujarat Region, Saurashtra & Kutch, Konkan & Goa, Madhya Maharashtra and Marathawada.
  - **South India:** Coastal Andhra Pradesh & Yanam, Telangana, Rayalaseema, Coastal Karnataka, North Interior Karnataka, South Interior Karnataka, Kerala & Mahe, Tamil Nadu, Puducherry & Karaikal and Lakshadweep.



## LEGENDS

1. अंडमान और निकोबार द्वीपसमूह

2. अरुणाचल प्रदेश

3. असम और मेघालय

4. नागालैंड, मणिपुर, मिजोरम और त्रिपुरा

5. उप-हिमालयी पश्चिम बंगाल और सिक्किम

6. गंगीय पश्चिम बंगाल

7. ओडिशा

8. झारखंड

9. बिहार

10. पूर्वी उत्तर प्रदेश

11. पश्चिम उत्तर प्रदेश

12. उत्तराखंड

13. हरियाणा, चंडीगढ़ और दिल्ली

14. पंजाब

15. हिमाचल प्रदेश

16. जम्मू और कश्मीर और लद्दाख

17. पश्चिम राजस्थान

18. पूर्वी राजस्थान

19. पश्चिम मध्य प्रदेश

20. पूर्वी मध्य प्रदेश

21. गुजरात

22. सौराष्ट्र

23. कोंकण और गोवा

24. मध्य महाराष्ट्र

25. मराठवाड़ा

26. विदर्भ

27. छत्तीसगढ़

28. तटीय आंध्र प्रदेश और यनम

29. तेलंगाना

30. रायलसीमा

31. तमिलनाडु, पुडुचेरी और कराईकल

32. तटीय कर्नाटक

33. आंतरिक उत्तरी कर्नाटक

34. आंतरिक दक्षिणी कर्नाटक

35. केरल और माहे

36. लक्षद्वीप



1. Andaman & Nicobar Islands

2. Arunachal Pradesh

3. Assam & Meghalaya

4. Nagaland, Manipur, Mizoram & Tripura

5. Sub-Himalayan West Bengal & Sikkim

6. Gangetic West Bengal

7. Odisha

8. Jharkhand

9. Bihar

10. East Uttar Pradesh

11. West Uttar Pradesh

12. Uttarakhand

13. Haryana, Chandigarh & Delhi

14. Punjab

15. Himachal Pradesh

16. Jammu & Kashmir and Ladakh

17. West Rajasthan

18. East Rajasthan

19. West Madhya Pradesh

20. East Madhya Pradesh

21. Gujarat

22. Saurashtra

23. Konkan & Goa

24. Madhya Maharashtra

25. Marathwada

26. Vidarbha

27. Chhattisgarh

28. Coastal Andhra Pradesh & Yanam

29. Telangana

30. Rayalaseema

31. Tamilnadu, Puducherry & Karaikal

32. Coastal Karnataka

33. North Interior Karnataka

34. South Interior Karnataka

35. Kerala & Mahe

36. Lakshadweep

## SPATIAL DISTRIBUTION (% of Stations reporting)

% Stations	Category	% Stations	Category
76-100	Widespread (WS/Most Places)	26-50	Scattered (SCT/A Few Places)
51-75	Fairly Widespread (FWS/Many Places)	1-25	Isolated (ISOL)



Fog



Heavy Snow



Cold Wave



Heavy Rain



Dust Storm



Cold Day



Very Heavy Rain



Heat Wave



Ground Frost



Extremely Heavy Rain



Warm Night



Thunder & Lightning



Hot Day



Hailstorm



Hot & Humid



Dust Raising Winds



Strong Surface Winds

### COLOUR CODED WARNING

No Warning (No Action)

Watch (Be Aware)

Alert (Be Prepared To Take Action)

Warning (Take Action)

### Probabilistic Forecast

Terms	Probability of Occurrence (%)
Unlikely	< 25
Likely	25 - 50
Very Likely	50 - 75
Most Likely	> 75

\* Red colour warning does not mean "Red Alert", Red colour warning means "Take Action".

Forecast and Warning for any day is valid from 0830 hours IST of day till 0830 hours IST of next day.

For more details, kindly visit <https://mausam.imd.gov.in> or contact: 011-2434-4599

(Service to the Nation since 1875)



## DEFINITION/CRITERIA

### Rain/ Snow \*

Heavy: 64.5 to 115.5 mm/cm \*  
Very Heavy: 115.6 to 204.4 mm/cm \*  
Extremely Heavy: > 204.4 mm/cm \*

### Heat Wave

When maximum temperature of a station reaches  $\geq 40^{\circ}\text{C}$  for plains and  $\geq 30^{\circ}\text{C}$  for hilly regions

(a) Based on Departure from normal

Heat Wave: Maximum Temperature Departure from normal  $4.5^{\circ}\text{C}$  to  $6.4^{\circ}\text{C}$ .

Severe Heat Wave: Maximum Temperature Departure from normal  $\geq 6.5^{\circ}\text{C}$

(b). Based on Actual maximum temperature

Heat Wave: When actual maximum temperature  $\geq 45^{\circ}\text{C}$ .

Severe Heat Wave: When actual maximum temperature  $\geq 47^{\circ}\text{C}$ .

(c). Criteria for heat wave for coastal stations

When maximum temperature departure is  $> 4.5^{\circ}\text{C}$  from normal. Heat Wave may be described provided maximum temperature  $\geq 37^{\circ}\text{C}$ .

### Warm Night

When maximum temperature remains  $40^{\circ}\text{C}$

Warm Night: When minimum temperature departure  $4.5^{\circ}\text{C}$  to  $6.4^{\circ}\text{C}$ .

Severe Warm Night: When minimum temperature departure  $> 6.4^{\circ}\text{C}$ .

### Cold Wave

When minimum temperature of a station  $\leq 10^{\circ}\text{C}$  for plains and  $\leq 0^{\circ}\text{C}$  for hilly regions.

(a). Based on departure

Cold Wave: Minimum Temperature Departure from normal  $-4.5^{\circ}\text{C}$  to  $-6.4^{\circ}\text{C}$ .

Severe Cold Wave: Minimum Temperature Departure from normal  $\leq -6.5^{\circ}\text{C}$

(b) Based on actual Minimum Temperature (for Plains only)

Cold Wave: When Minimum Temperature is  $\leq 4.0^{\circ}\text{C}$

Severe Cold Wave: When Minimum Temperature is  $\leq 2.0^{\circ}\text{C}$

(c) For Coastal Stations

When Minimum Temperature departure is  $\leq -4.5^{\circ}\text{C}$  & actual Minimum Temperature is  $\leq 15^{\circ}\text{C}$

### Cold Day

When minimum temperature of a station  $\leq 10^{\circ}\text{C}$  for plains and  $\leq 0^{\circ}\text{C}$  for hilly regions

Based on departure

Cold Day: Maximum Temperature Departure from normal  $-4.5^{\circ}\text{C}$  to  $-6.4^{\circ}\text{C}$ .

Severe Cold Day: Maximum Temperature Departure from normal  $\leq -6.5^{\circ}\text{C}$

### Fog

Phenomenon of small droplets suspended in air and the horizontal visibility  $< 1\text{km}$

Moderate Fog: When the visibility between 500-200 metres

Dense Fog: when the visibility between 50- 200 metres

Very Dense Fog: when the visibility  $< 50$  metres

### Thunderstorm

Sudden electrical discharges manifested by a flash of light (Lightning) and a sharp rumbling sound (thunder)

### Dust/Sand Storm

An ensemble of particles of dust or sand energetically lifted to great heights by a strong and turbulent wind.

### Frost

Ice deposits on ground

Air temperature  $\leq 4^{\circ}\text{C}$  ( over Plains)

### Squall

A strong wind that rises suddenly, lasts for atleast 1 minute.

Moderate: Wind speed 52-61 kmph

Severe: Wind speed 62-67 kmph

Very Severe: Wind speed  $> 67$  kmph

### Sea State

Effect of various waves in the sea over specific area

Rough to very rough: Wind speed 41-62 kmph (22-33 knots) & Wave height 2.5-6 metre

High to very high: Wind speed 63-117 kmph ( 34-63 knots) & Wave height 6-14 metre

Phenomenal: Wind speed  $> 117$  kmph ( $> 63$  knots) & Wave height  $> 14$  metre

### Cyclone

Cyclonic Storm: Wind speed 62-87 kmph (34-47 knots)

Severe Cyclonic Storm: Wind speed 88-117 kmph (48-63 knots)

Very Severe Cyclonic Storm: Wind speed 118-165 kmph (64 - 89 knots)

Extremely Severe Cyclonic Storm: Wind speed 166-220 kmph (90 -119 knots)

Super Cyclone Storm: Wind speed  $> 220$  kmph ( $> 119$  knots)

\* Red colour warning does not mean "Red Alert", Red colour warning means "Take Action".

Forecast and Warning for any day is valid from 0830 hours IST of day till 0830 hours IST of next day.

For more details, kindly visit <https://mausam.imd.gov.in> or contact: 011-2434-4599

(Service to the Nation since 1875)

**Hot and Humid:** When maximum temperatures remain  $3^{\circ}\text{C}$  above normal along with the above normal relative humidity.