



Government of India
Ministry of Earth Sciences
India Meteorological Department



Press Release

Date: 27th July, 2025

Time of Issue: 1400 hours IST

**Subject: i) Isolated extremely heavy rainfall likely over Gujarat Region on 27th; East Rajasthan on 27th & 28th and very heavy rainfall over West Madhya Pradesh and Saurashtra & Kutch on 27th July.
ii) Heavy to very heavy rainfall likely to continue over Northeast India on 27th & 28th July with a fresh spell of Heavy to very heavy rainfall likely to commence during 01st-03rd August.
iii) A fresh spell of Heavy to very heavy rainfall likely to commence over Western Himalayan region during 29th-31st July.**

Realised weather during past 24 hours till 0830 hours IST of today, the 27th July, 2025:

- ❖ **Extremely heavy falls (≥ 21 cm)** has been recorded at isolated places over ghat areas of Madhya Maharashtra, East Madhya Pradesh, Gujarat Region, Coastal & South Interior Karnataka, interior Tamil Nadu and Assam.
- ❖ **Heavy to very heavy rainfall (7-20 cm)** has been recorded at isolated places Konkan, Marathawada, Kerala, East Rajasthan, Uttarakhand, West Madhya Pradesh, Manipur, Arunachal Pradesh; **Heavy rainfall (7-11 cm)** at isolated places over Sub-Himalayan West Bengal, West Rajasthan, West Uttar Pradesh, Jharkhand, Chhattisgarh, Vidarbha, Mizoram & Tripura and Meghalaya.

For more details of realised weather, kindly refer [Annexure I](#).

i. Weather Systems, Forecast and Warnings (refer to Annexure II & III):

- ❖ The Western end of monsoon trough runs south of its normal position and eastern end runs near its normal position at mean sea level.
- ❖ Yesterday's **Depression** over coastal West Bengal and adjoining areas of Northwest Bay of Bengal & Bangladesh moved west-northwestwards and weakened into a **well marked low pressure area** over northwest Madhya Pradesh and neighbourhood at 0530 hrs IST of today and persisted over the same region at 0830 hrs IST of today. It is very likely to continue to move nearly westwards across northwest Madhya Pradesh and weaken gradually into a low pressure area during next 12 hours.
- ❖ A trough runs from cyclonic circulation associated with the well marked low pressure area over northwest Madhya Pradesh to northeast Bangladesh in lower & middle tropospheric levels.
- ❖ An off-shore trough at sea level runs along Gujarat- north Kerala coasts.
- ❖ A Western Disturbance as a cyclonic circulation lies over Jammu & Kashmir & neighbourhood in lower tropospheric levels with a trough aloft runs roughly along Long. 68°E to the north of Lat. 32°N.
- ❖ An upper air cyclonic circulation lies over northeast Assam & neighbourhood in lower tropospheric levels.

Under the influence of these systems, the following weather is likely:

Northwest India:

- ✓ **Extremely heavy rainfall** very likely at isolated places over East Rajasthan on 27th & 28th July with **very heavy rainfall** during 29th-31st July.
- ✓ **A fresh spell of Heavy to very heavy rainfall likely to commence over Western Himalayan region during 29th-31st July.**
- ✓ **Isolated very heavy rainfall over West Uttar Pradesh on 28th, Uttarakhand during 28th-30th, Himachal Pradesh on 29th and Jammu & Kashmir on 30th July.**
- ✓ **Isolated heavy rainfall** likely over Uttarakhand during 27th July-02nd August; Himachal Pradesh during 28th-30th; Jammu and Kashmir, East Uttar Pradesh during 29th-31st; Haryana & Chandigarh on 28th & 29th; West Uttar Pradesh during 27th-29th and West Rajasthan during 27th-31st July.

- ✓ Light/moderate rainfall at many places accompanied with thunderstorm, lightning likely over Western Himalayan region and some places over the plains during next 7 days.

West India:

- ✓ **Extremely heavy rainfall** very likely at isolated places over Gujarat Region on 27th July.
- ✓ Isolated **heavy rainfall** likely over Konkan & Goa, Gujarat state, Ghat areas of Madhya Maharashtra during 27th-30th July with isolated **very heavy rainfall** over Ghat areas of Madhya Maharashtra on 27th & 28th; Saurashtra & Kutch, Konkan on 27th; Gujarat Region on 28th July.
- ✓ Light to moderate rainfall at many places very likely over the region during next 6-7 days.

Northeast India:

- ✓ **A fresh spell of Heavy to very heavy rainfall likely to commence over Northeast India during 01st-03rd August.**
- ✓ **Extremely heavy rainfall** very likely at isolated places over Nagaland, Manipur, Mizoram & Tripura on 01st & 02nd August.
- ✓ Light/moderate rainfall at many places accompanied with **thunderstorm, lightning and isolated heavy to very heavy rainfall** likely to continue over Arunachal Pradesh, Assam & Meghalaya during 27th July-02nd August.

East & Central India:

- ✓ Isolated **heavy rainfall** likely over Madhya Pradesh, Chhattisgarh during 27th-31st; Vidarbha on 27th; Sub-Himalayan West Bengal & Sikkim during 27th July & 02nd August; Bihar during 28th-30th; Jharkhand, Gangetic West Bengal during 29th-31st; Odisha on 29th July with isolated **very heavy rainfall** over West Madhya Pradesh during 27th-29th; East Madhya Pradesh on 28th & 29th; Sub-Himalayan West Bengal & Sikkim on 02nd August.
- ✓ Light to moderate rainfall at most/many places accompanied with thunderstorm, lightning & gusty winds (speed reaching 30-40 Km/h) likely over the region during next 5 days.

South Peninsular India:

- ✓ Isolated **heavy rainfall** likely over Tamil Nadu on 27th; Kerala & Mahe, South Interior Karnataka during 27th-30th; Coastal Karnataka during 27th-31st July with isolated **very heavy rainfall** over Coastal Karnataka during 27th-29th; South Interior Karnataka on 27th & 28th July.
- ✓ **Strong surface winds** (speed reaching 40-50 km/h) very likely over South Peninsular India during next 5 days.
- ✓ Light to moderate rainfall at most/many places over Kerala & Mahe, Lakshadweep, Karnataka, Rayalaseema, Coastal Andhra Pradesh & Yanam and Telangana during next 7 days.

Fishermen warning:

Fishermen are advised to avoid venturing into the following from 27th July to 01st August 2025 to the following Areas:

- ❖ **Arabian Sea:** Along and off Gujarat, Konkan, Goa, Karnataka, coasts and adjoining sea area; Comorin areas, many parts of southeast, eastcentral, northeast Arabian Sea & some parts of southwest, few parts of westcentral Arabian Sea; along and off the Somalia coast and adjoining sea areas, south Oman and adjoining Yemen coast & adjoining sea areas; southern parts of north Arabian Sea adjoining to central Arabian Sea during 27th July to 1st August and along and off Kerala coasts, over Lakshadweep, Maldives during 27th July to 30th July, 2025.
- ❖ **Bay of Bengal:** Along and off Andhra Pradesh coast during 27th July and North Andhra Pradesh coast for 28th & 29th July; Odisha, Gangetic West Bengal, Bangladesh and Myanmar coasts for 27th & 28th July; most parts of South Bay of Bengal during 27th to 29th July, many parts of south Bay of Bengal during 28th to 31st July; over central Bay of Bengal, Gulf of Mannar during 27th July to 1st August; over north Bay of Bengal for 27th July & 28th July; over few parts of north Bay of Bengal during 29th July to 01st August; entire Andaman Sea during 27th July to 29th July 2025.

ii. Weather conditions and forecast over Delhi/NCR during 27th to 30th July, 2025 (Annexure IV)

For more details, kindly refer National Weather Bulletin:

https://mausam.imd.gov.in/responsive/all_india_forecast_bulletin.php

For District wise warnings refer: <https://mausam.imd.gov.in/responsive/districtWiseWarningGIS.php>

Rainfall recorded (in cm) during past 24 hours till 0830 hours IST of today, the 27th July:

Tamil Nadu, Puducherry & Karaikal: Avalanche (dist Nilgiris) 26; Upper Bhavani (dist Nilgiris) 18; Chinnakalar (dist Coimbatore) 17; Naduvattam (dist Nilgiris) 16; Cincona (dist Coimbatore) 8; Valparai PTO (dist Coimbatore), Upasi Tea Research AWS (dist Coimbatore), Sholayar (dist Coimbatore), Glenmorgan (dist Nilgiris) 7 Each;

Gujarat Region: Vadgam (dist Banaskantha) 23; Dharoi Colony (dist Mehsana) 18; Kathalal (dist Kheda), Siddhpur (dist Patan) 17 Each; Modasa (dist Aravalli) 16; Kaprada (dist Valsad), Talod (dist Sabarkantha) 13 Each; Dharampur (dist Valsad), Mahemdavad (dist Kheda), Dahegam (dist Gandhinagar) 12 Each; Satlasana (dist Mehsana), Lunawada (dist Mahisagar), Palanpur (dist Banaskantha), Mahesana (dist Mehsana) 10 Each;

East Madhya Pradesh: Pushprajgarh (dist Anuppur) 22; Dindori-aws (dist Dindori) 10; Waraseoni (dist Balaghat) 9; Balaghat-aws (dist Balaghat), Niwari (dist Niwari), Matiyari (dist Mandla) 8 Each; Nainpur (dist Mandla), Nagode (dist Satna), Bajag (dist Dindori), Palera (dist Tikamgarh), Prithvipur (dist Niwari), Sohawal (dist Satna), Gaurihar (dist Chhatarpur) 7 Each;

South Interior Karnataka: Agumbe AWS (dist Shivamogga) 22; Sringeri HMS (dist Chikkamagaluru) 14; Somwarpet (dist Kodagu), Bhagamandala (dist Kodagu) 12 Each; Kammardi (dist Chikkamagaluru) 11; Jayapura (dist Chikkamagaluru) 10; Kottigehara (dist Chikkamagaluru) 9; Balehonnur (dist Chikkamagaluru), Napoklu (dist Kodagu), Koppa (dist Chikkamagaluru) 8 Each;

Coastal Karnataka: Castle Rock (dist Uttara Kannada) 22; Siddapura (dist Udupi) 9;

Assam & Meghalaya: Chauldhowaghat (dist Lakhimpur) 21; Mawsynram (dist East Khasi Hills), N.lakhimpur/Lilabari (dist Lakhimpur) 15 Each; Cherrapunji (dist East Khasi Hills) 11; Guwahati AP (dist Kamrup Metropolitan) 10; Williamnagar (dist East Garo Hills), Tamulpur (dist Tamulpur), Guwahati AWS (dist Kamrup Metropolitan) 9 Each; Mushalpur AWS (dist Baksa), Mawkyrwat (dist South West Khasi Hills) 8 Each; Bhumuraguri (dist Sonitpur), Tezpur (dist Sonitpur) 7 Each;

Madhya Maharashtra: Mahabaleshwar (dist Satara) 20; Lonavala ARG (dist Pune) 15; Radhanagari (dist Kolhapur), Gaganbawada (dist Kolhapur) 13 Each; Igatpuri (dist Nashik) 11; Peth (dist Nashik) 9; Chandgad (dist Kolhapur), Harsul - Fmo (dist Nashik) 8 Each;

Kerala & Mahe: Ayyankunnu AWS (dist Cannur) 18; Aralam AWS (dist Cannur) 16; Munnar Kseb (dist Idukki) 15; Chemberi AWS (dist Cannur) 14; Tellichery (dist Cannur), Idukki (dist Idukki) 12 Each; Irikur (dist Cannur), Kodungallur (dist Thrissur) 11 Each; Vadakara (dist Kozhikode), Sengulam Dam AWS (dist Idukki), Udumbannoor AWS (dist Idukki), Munakkal AWS (dist Thrissur) 10 Each; Peermade To (dist Idukki), Kochi C.i.a.l. (dist Ernakulam), Perumpavur (dist Ernakulam), Kollamkode (dist Palakkad), Alwaye PWD (dist Ernakulam) 9 Each;

West Madhya Pradesh: Sailana (dist Ratlam) 17; Jhabua-aws (dist Jhabua), Agar (dist Agar-malwa) 13 Each; Shivpuri (dist Shivpuri) 12; Ratlam-aws (dist Ratlam), Tarana (dist Ujjain), Kumbhraj (dist Guna) 11 Each; Datia-aws (dist Datia), Dhar-aws (dist Dhar) 10 Each; Badnawar (dist Dhar), Sardarpur (dist Dhar), Petlawad (dist Jhabua), Bhimpur (dist Betul), Badarwas (dist Shivpuri) 9 Each; Atner (dist Betul), Makdone (dist Ujjain) 8 Each;

East Rajasthan: Khushalgarh (dist Banswara) 14; Sajjangarh SR (dist Banswara) 11; Sarmathura SR (dist Dholpur) 10; Chothkabarwara SR (dist Sawai Madhopur), Nasirabad (dist Ajmer) 9 Each; Shergarh SR (dist Banswara), Bhungra SR (dist Banswara), Sallopat SR (dist Banswara), Bari (dist Dholpur), Jagpura SR (dist Banswara), Reodar SR (dist Sirohi) 8 Each; Sapau SR (dist Dholpur), Srinagar SR (dist Ajmer), Sapotra (dist Karauli), Nithuwa SR (dist Dungarpur), Kekri SR (dist Ajmer), Arnod SR (dist Pratapgarh), Kishanganj (dist Baran) 7 Each;

Uttarakhand: Sama (dist Bageshwar) 12; Loharkhet (dist Bageshwar) 9; Kapkot (dist Bageshwar) 8; Dharchula (dist Pithoragarh) 7;

Marathwada: Pathri (dist Parbhani) 12; Manvat (dist Parbhani) 11; Nanded - IMD Parttime (dist Nanded), Purna (dist Parbhani) 10 Each; Parbhani (dist Parbhani), Kannad (dist Chh. Sambhajinagar), Ardhapur (dist Nanded) 8 Each; Phulambri (dist Chh. Sambhajinagar), Bhokar (dist Nanded), Khultabad (dist Chh. Sambhajinagar) 7 Each;

Konkan: Matheran (dist Raigad) 11; Mhasla (dist Raigad), Rajapur (dist Ratnagiri) 9 Each; Wakwali ARG (dist Ratnagiri) 8; Karjat ARG (dist Raigad), Poladpur (dist Raigad) 7 Each;

Chhattisgarh: Bhanupratappur (dist Kanker) 10; Bade Bacheli (dist Dantewada) 9; Aundhi (dist Mohala Manpur Chowki) 7;

Nagaland, Manipur, Mizoram & Tripura: Belonia (dist South Tripura) 10; Jirania ARG (dist West Tripura) 9; Kvk South (dist South Tripura), Belonia ARG (dist South Tripura) 8 Each;

Arunachal Pradesh: Anini AWS (dist Dibang Valley), Naharlagun AWS (dist Papumpara) 9 Each; **Telangana:** Banswada (dist Kamareddy) 9; Gandhari (dist Kamareddy) 7;

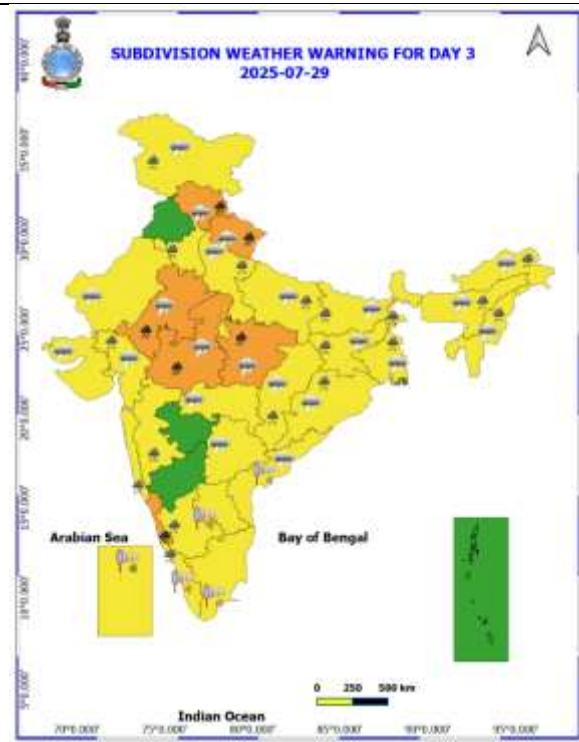
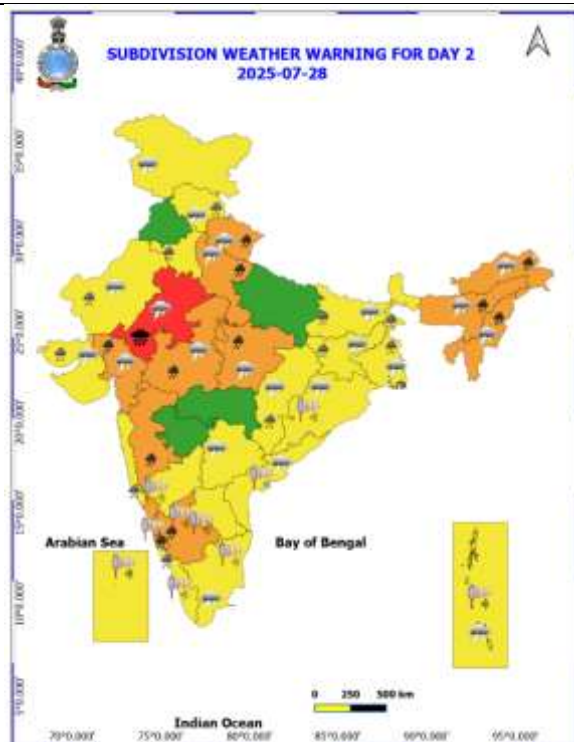
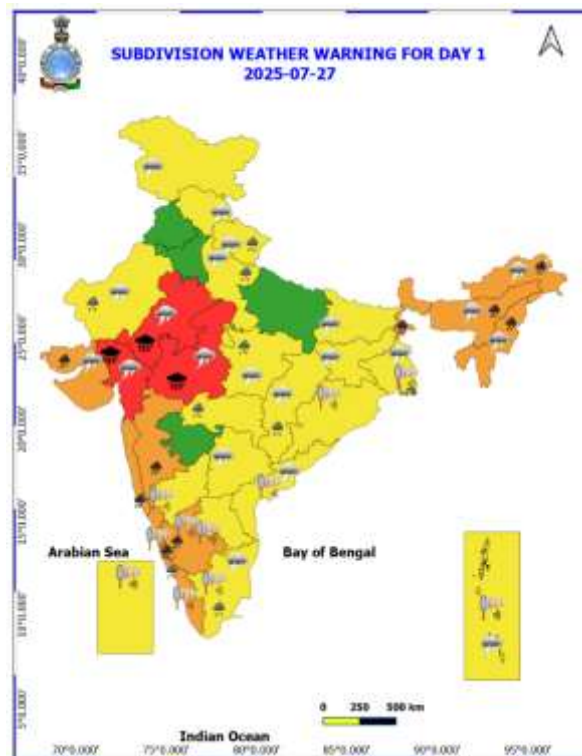
West Uttar Pradesh: Mahroni (dist Lalitpur) 8;

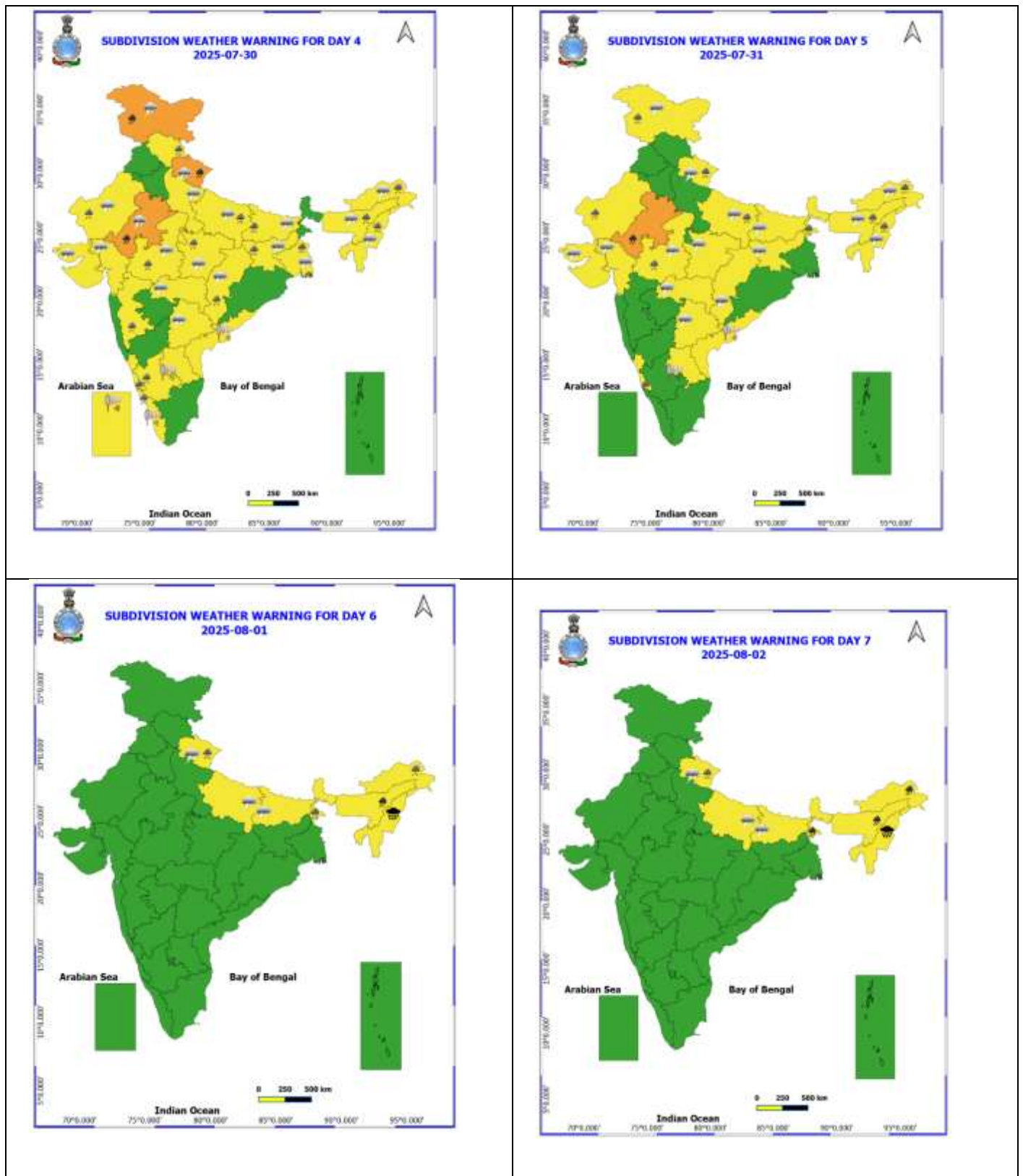
Vidarbha: Kurkheda (dist Gadchiroli), Gondia (dist Gondia), Armori (dist Gadchiroli) 8 Each; Dhanora (dist Gadchiroli), Korchi (dist Gadchiroli) 7 Each;

West Rajasthan: Raipur SR (dist Pali), Jaitran (dist Pali) 7 Each.

Table-1								
7 Days Rainfall Forecast								
S.No.	Subdivision	27- Jul	28- Jul	29- Jul	30- Jul	31- Jul	1- Aug	2- Aug
		Day 1	Day 2	Day 3	Day 4	Day 5	Day 6	Day 7
1	ANDAMAN & NICOBAR ISLANDS	SCT	FWS	WS	WS	FWS	FWS	WS
2	ARUNACHAL PRADESH	WS	WS	FWS	FWS	FWS	WS	WS
3	ASSAM & MEHGHALAYA	WS	WS	FWS	FWS	FWS	WS	WS
4	NAGALAND, MANIPUR, MIZORAM AND TRIPURA	WS	WS	FWS	FWS	FWS	WS	WS
5	SUB HIMALAYAN WEST BENGAL & SIKKIM	FWS	FWS	FWS	FWS	WS	WS	WS
6	GANGETIC WEST BENGAL	FWS	WS	WS	WS	FWS	FWS	FWS
7	ODISHA	SCT	SCT	FWS	FWS	FWS	SCT	SCT
8	JHARKHAND	FWS	FWS	WS	WS	FWS	SCT	SCT
9	BIHAR	SCT	FWS	SCT	SCT	SCT	SCT	SCT
10	EAST UTTAR PRADESH	ISOL	SCT	FWS	FWS	SCT	SCT	SCT
11	WEST UTTAR PRADESH	SCT	FWS	SCT	SCT	SCT	SCT	SCT
12	UTTARAKHAND	WS	WS	SCT	FWS	FWS	FWS	FWS
13	HARYANA, CHANDIGARH & DELHI	ISOL	SCT	FWS	SCT	SCT	ISOL	FWS
14	PUNJAB	ISOL	ISOL	SCT	SCT	SCT	ISOL	SCT
15	HIMACHAL PRADESH	FWS	WS	WS	FWS	FWS	FWS	FWS
16	JAMMU AND KASHMIR AND LADAKH	SCT	SCT	FWS	WS	WS	FWS	SCT
17	WEST RAJASTHAN	FWS	FWS	SCT	SCT	FWS	SCT	ISOL
18	EAST RAJASTHAN	WS	WS	FWS	FWS	FWS	SCT	ISOL
19	WEST MADHYA PRADESH	WS	WS	WS	WS	SCT	FWS	SCT
20	EAST MADHYA PRADESH	WS	WS	WS	WS	WS	FWS	SCT
21	GUJRAT REGION	WS	WS	WS	FWS	FWS	FWS	FWS
22	SAURASHTRA & KUTCH	WS	WS	WS	FWS	FWS	SCT	SCT
23	KONKAN & GOA	WS	WS	WS	WS	WS	WS	FWS
24	MADHYA MAHARASHTRA	FWS	SCT	FWS	SCT	SCT	ISOL	ISOL
25	MARATHWADA	SCT	ISOL	ISOL	ISOL	ISOL	ISOL	ISOL
26	VIDARBHA	WS	WS	WS	WS	FWS	FWS	SCT
27	CHHATTISGARH	FWS	FWS	FWS	FWS	SCT	SCT	SCT
28	COASTAL ANDHRA PRADESH	SCT	ISOL	ISOL	ISOL	ISOL	ISOL	ISOL
29	TELANGANA	SCT	ISOL	ISOL	ISOL	ISOL	ISOL	ISOL
30	RAYALASEEMA	ISOL	ISOL	ISOL	ISOL	ISOL	ISOL	ISOL
31	TAMILNADU & PUDUCHERRY	ISOL	ISOL	ISOL	ISOL	ISOL	SCT	SCT
32	COSTAL KARNATAKA	WS	WS	WS	WS	WS	WS	WS
33	NORTH INTERIOR KARNATAKA	FWS	SCT	SCT	SCT	ISOL	ISOL	ISOL
34	SOUTH INTERIOR KARNATAKA	WS	SCT	SCT	SCT	SCT	SCT	SCT
35	KERALA AND MAHE	WS	WS	WS	WS	FWS	FWS	FWS
36	LAKSHADWEEP	WS	WS	WS	WS	FWS	FWS	FWS

- As the lead period increases forecast accuracy decrease.





- Action may be taken based on ORANGE AND REDCOLOUR warnings.
- Vulnerable regions likely urban and hilly areas action may be initiated for heavy rainfall warning.
- As the lead period increases forecast accuracy decreases.

Detailed districtwise Multi Hazard weather warning for next five days available at <https://mausam.imd.gov.in/responsive/districtWiseWarningGIS.php>

Weather forecast over Delhi/NCR during 27th to 30th July 2025

Past Weather:

There has been no large change in the minimum temperature and maximum temperature over Delhi/NCR during the past 24 hours. The maximum and minimum temperatures over Delhi were around 35 to 37°C and 27 to 29°C, respectively. The minimum temperatures and the maximum temperatures were above normal up to 1 - 3°C. Partly cloudy sky conditions with predominant surface wind from the southeast/southwest direction with wind speeds up to 18 kmph prevailed during the past 24 hours. Generally cloudy sky conditions with a windspeed of less than 15 kmph from the southeast direction prevailed over the region in the forenoon today.

Weather Forecast:

27.07.2025: Generally cloudy sky. Very light to light rain accompanied by thunderstorms/lightning at a few places. The maximum temperatures over Delhi are likely to be in the range of 35 to 37°C. The maximum temperature will be above normal by 1 to 2°C. The predominant surface wind will likely be from the southeast direction with a wind speed of less than 10 kmph in the afternoon. The wind speed will gradually decrease becoming 08 kmph from the northeast direction during the evening and night.

28.07.2025: Generally cloudy sky. Light to moderate rain accompanied with thunderstorms/lightning. The maximum and minimum temperatures over Delhi are likely to be in the range of 33 to 35°C and 26 to 28°C, respectively. The minimum temperature will be near normal and the maximum temperature will be below normal by up to 1 to 2°C. The predominant surface wind will likely be from the southwest direction with a wind speed of less than 15 kmph during the morning hours. The wind speed will gradually increase becoming less than 18 kmph from the southwest direction in the afternoon. It will increase to less than 25 kmph from the southeast direction during the evening and night.

29.07.2025: Generally cloudy sky. Light to moderate rain accompanied by thunderstorms/lightning. The maximum and minimum temperatures over Delhi are likely to be in the range of 29 to 31°C and 23 to 25°C, respectively. The minimum temperature will be below normal by 1 to 2°C, and the maximum temperature will be below normal by 3 to 5°C. The predominant surface wind will likely be from the southeast direction with a wind speed of less than 15 kmph during the morning hours. The wind speed will gradually increase, becoming less than 25 kmph from the southeast direction in the afternoon. It will decrease becoming less than 18 kmph from the southeast direction during the evening and night.

30.07.2025: Generally cloudy sky. Light to moderate rain accompanied by thunderstorms/lightning. The maximum and minimum temperatures over Delhi are likely to be in the range of 31 to 33°C and 23 to 25°C, respectively. The minimum temperature will be below normal by 1 to 2°C, and the maximum temperature will be below normal by 2 to 4°C. The predominant surface wind will likely be from the east direction with a wind speed of less than 25 kmph during the morning hours. The wind speed will gradually decrease becoming less than 20 kmph from the southeast direction in the afternoon. It will decrease becoming less than 18 kmph from the southeast direction during the evening and night.

Impact expected and Action Suggested due to light to moderate rainfall with thunderstorm/lightning:

- Be cautious and take precautionary measures, though there is the likelihood of thunderstorms/lightning.
- Damage to standing crops, Minor to major damage to power and communication lines due to breaking of branches, Partial damage to vulnerable structures due to strong winds, Loose objects may fly.
- People are advised to keep a watch on the weather for worsening conditions and be ready to move to safer places accordingly, stay indoors, close windows & doors and avoid travel if possible, take safe shelters; do not take shelter under trees, do not lie on concrete floors and do not lean against concrete walls, unplug electrical/ electronic appliances, immediately get out of water bodies, keep away from all the objects that conduct electricity.

- ✓ **Extremely heavy rainfall** very likely at isolated places over Gujarat Region on 27th; East Rajasthan on 27th & 28th; Nagaland, Manipur, Mizoram & Tripura on 01st & 02nd August.
- ✓ Isolated **very heavy rainfall** over Ghat areas of Madhya Maharashtra, South Interior Karnataka on 27th & 28th; Saurashtra & Kutch, Konkan on 27th; Gujarat Region, West Uttar Pradesh on 28th; Himachal Pradesh on 29th; Uttarakhand during 28th-30th; Jammu & Kashmir on 30th; East Rajasthan during 27th-31st; Arunachal Pradesh, Assam & Meghalaya during 27th July-02nd August; West Madhya Pradesh, Coastal Karnataka during 27th-29th; East Madhya Pradesh on 28th & 29th; Sub-Himalayan West Bengal & Sikkim on 02nd August.

Impact Expected

- Localized Flooding of roads, water logging in low lying areas and closure of underpasses mainly in urban areas of the above region.
- Occasional reduction in visibility due to heavy rainfall.
- Disruption of traffic in major cities due to water logging in roads leading to increased travel time.
- Minor damage to kutch roads.
- Possibilities of damage to vulnerable structure.
- Localized Landslides/Mudslides/landslips/mudslips/landsinks/mudsinks.
- Damage to horticulture and standing crops in some areas due to inundation.
- It may lead to riverine flooding in some river catchments (for riverine flooding please visit Web page of CWC)

Action Suggested

- Check for traffic congestion on your route before leaving for your destination.
- Follow any traffic advisories that are issued in this regard.
- Avoid going to areas that face the water logging problems often.
- Avoid staying in vulnerable structure.

Agromet advisories for likely impact of Heavy / Heavy to Very Heavy / Extremely Heavy Rainfall

- In **East Rajasthan**, postpone sowing of green gram, pearl millet, cluster bean and sesame till cessation of heavy rains and make arrangement for removal of excess water from already sown fields in **Sub Humid Southern Plain and Aravali Hill Zone** and **Flood Prone Eastern Plain Zone**. In **Southern Humid Plain Zone**, postpone sowing of maize till cessation of heavy rains and ensure proper drainage in cotton and soybean fields to remove excess water. Make provision to drain out excess water from rice nurseries, fields of maize, soybean and black gram in **Southeastern Humid Plain zone** and fields of pearl millet and groundnut in **Semi Arid Eastern Plain Zone**.
- In **Madhya Pradesh**, provide adequate drainage in the fields of soybean and maize in **Malwa Plateau Zone**; rice, maize and soybean in **Kymore Plateau and Satpura Hill Zone**; soybean, rice, maize and pigeon pea in **Vindhyan Plateau Zone**; rice and vegetables in **Bundelkhand Zone**; maize, soybean, cotton, sugarcane and vegetables in **Satpura Plateau Zone**; soybean, maize, cotton and black gram in **Jhabua Hills Zone**; rice, soybean, maize, sugarcane and vegetables in **Central Narmada Valley Zone** and soybean, pigeon pea, cotton and vegetables in **Nimar Valley Zone**. In **Gird Zone**, postpone sowing of pearl millet and make arrangement to drain out excess water in fields of soybean, pigeon pea and transplanted rice.
- In **Chhattisgarh**, avoid sowing of pigeon pea during spells of heavy rainfall. Drain out excess water from rice nurseries, fields of soybean, pigeon pea, green gram, black gram, maize, sugarcane and vegetables in **Plain Zone**; fields of rice, minor millets, maize, pulses and oilseeds in **Bastar Plateau Zone** and fields of pigeon pea, vegetables and transplanted rice in **North Hill Zone**.
- In **Maharashtra**, make arrangement to drain out excess water from rice, finger millet, turmeric, groundnut and newly planted coconut, arecanut, mango and cashew in **Konkan**; rice and finger millet fields in **ghat areas** of **Madhya Maharashtra**; soybean, pearl millet, turmeric, sugarcane, orchards and vegetables in **Marathwada** and rice nurseries, orchards, vegetable nurseries, transplanted rice fields and already sown *kharif* crops like soybean, cotton and pigeon pea in **East Vidarbha**. Postpone transplanting of rice in **ghat areas** of **Pune** and **Nashik** districts and **Raigad** and **Palghar** districts.
- In **Gujarat**, make necessary arrangements to drain out excess water from fields of groundnut, maize, pearl millet, green gram and sesame in **North Gujarat Zone**; transplanted rice, cotton, pearl millet, pigeon pea,

soybean and vegetables in **Middle Gujarat Zone**; sugarcane, rice and vegetables in **South Gujarat Heavy Rainfall Zone** and sugarcane, cotton, pigeon pea, transplanted rice and vegetables in **South Gujarat Zone**.

- In **Uttarakhand**, maintain proper drainage channels in fields of rice in **Bhabar and Tarai Zone**, black gram in **Hill Zone** and rice, barnyard millet, finger millet and cucumber in **Sub Humid SubTropic Zone**.
- In **Karnataka**, postpone nursery sowing of rice and provide drainage in arecanut fields and banana orchards in **Coastal Zone**. In **Hill Zone**, make arrangements to drain out excess water from rice nurseries, fields of maize, cotton, ginger and plantations of arecanut. In **Southern Transition Zone**, provide proper drainage in arecanut and coconut fields. In **Southern Dry Zone**, provide staking / support to maize, tomato and banana crop. Ensure proper drainage to prevent waterlogging especially in rice, vegetables and spice crops.
- In **Kerala**, provide adequate drainage in fields of rice, coconut, banana and ginger. Postpone nursery / transplanting of rice. Provide staking in vegetables.
- In **Arunachal Pradesh**, harvest matured soybean immediately and store in safer place. Postpone sowing / transplanting of millet and transplanting of rice during heavy rainfall. Maintain drainage in already sown / transplanted finger millet, orchards, fields of vegetables and transplanted rice.
- In **Assam**, to avoid waterlogging ensure proper drainage in fields of *Sali* rice, sugarcane, sesame and fruit orchards in **Hill Zone**; jute and *Sali* rice fields in **Lower Brahmaputra Valley Zone**; *Sali* rice fields and arecanut plantations in **Upper Brahmaputra Valley Zone**; *Sali* rice fields in **Barak Valley Zone** and *Sali* rice nurseries, fields of maize, jute, sugarcane, vegetables and transplanted *Sali* rice in **Central Brahmaputra Valley Zone**.
- In **Meghalaya**, avoid sowing of rice in nurseries especially in valley lands. Maintain proper drainage channels around the nursery beds. Make provision for draining out excess water from vegetable fields and repair bunds in lowland paddy fields.
- In **Tripura**, drain out excess water from early transplanted *Sali* rice fields. Clean the drainage channels in rice and vegetable fields to ensure quick removal of excess water.
- In **Manipur**, provide adequate drainage in fields of soybean, groundnut, finger millet, maize, black gram, ginger, turmeric, vegetables and fruit orchards.
- In **Nagaland**, provide proper drainage channels in fields of maize and ginger to avoid water stagnation.
- In **Mizoram**, harvest matured cobs of maize. Create strong bunds around rice fields to retain rainwater and reduce runoff.

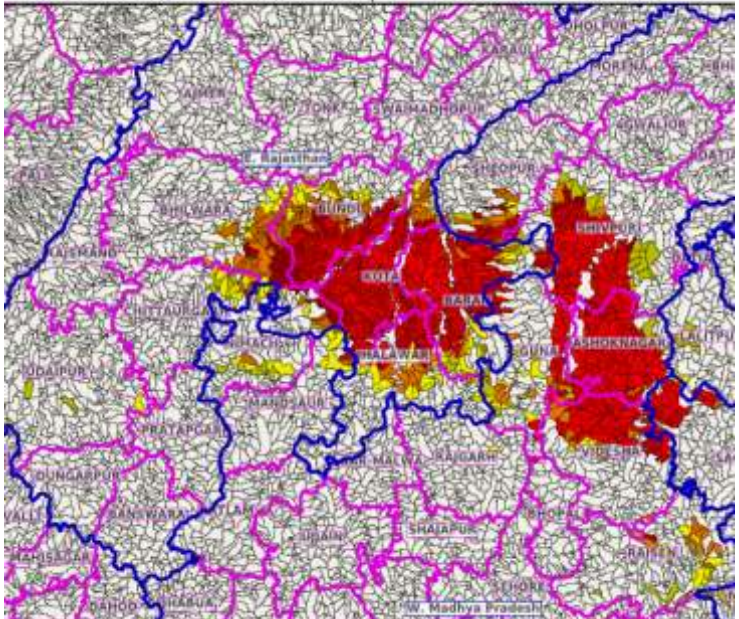
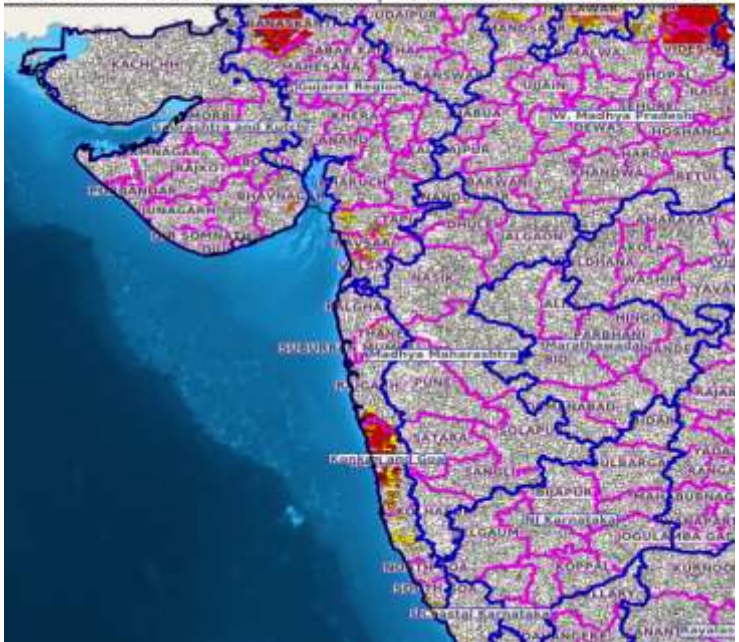
Livestock / Fishery

- Keep the animals inside the shed during heavy rainfall and provide them balanced feed.
- Store feed and fodder in a safe place to prevent spoilage.
- Construct an outlet with proper netting around the ponds to drain out excess water, thereby preventing fish from escaping in case of overflow.

Agromet advisories for likely impact of Thunderstorm / Gusty Winds / Squally Winds

- Provide mechanical support to horticultural crops and staking or support to vegetables and young fruit plants / fruit-bearing plants to avoid lodging due to strong winds.

Flash flood guidance:

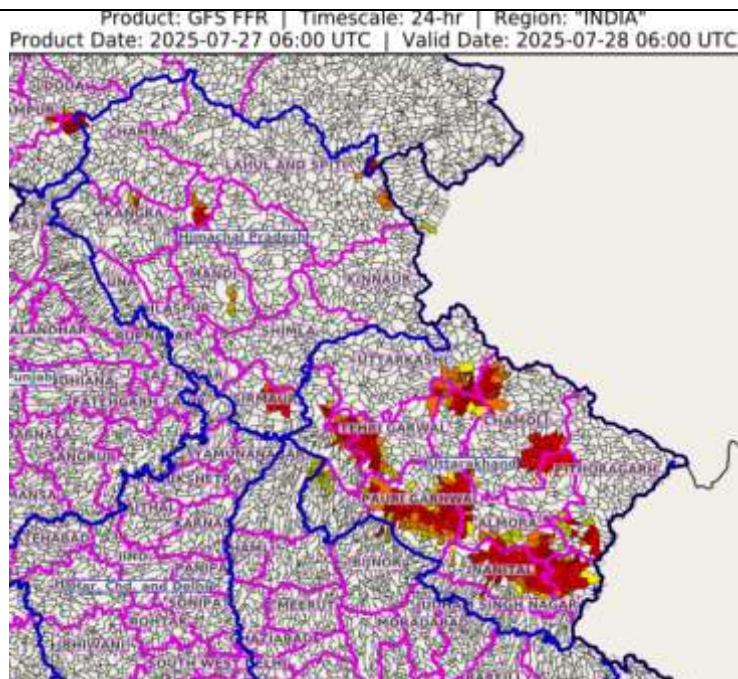
<p>24 hours Outlook for the Flash Flood Risk (FFR) till 1130 IST of 28-07-2025 :</p> <p>Low to Moderate flash flood risk likely over few watersheds & neighbourhoods of following Met Sub-divisions during next 24 hours.</p> <p>East Rajasthan - Baran, Bhilwara, Bundi, Chittaurgarh, Jhalawar, Kota and Udaipur districts.</p> <p>West Madhya Pradesh - Ashoknagar, Guna, Mandsaur, Nimach, Raisen, Rajgarh, Sheopur, Shivpuri and Videsha districts.</p> <p>Surface runoff/ Inundation may occur at some fully saturated soils & low-lying areas over Area of Concern (AoC) as shown in map due to expected rainfall occurrence in next 24 hours.</p>	<p>Product: GFS FFR Timescale: 24-hr Region: "REGIONAL"</p> <p>Product Date: 2025-07-27 06:00 UTC Valid Date: 2025-07-28 06:00 UTC</p> 
<p>24 hours Outlook for the Flash Flood Risk (FFR) till 1130 IST of 28-07-2025 :</p> <p>Low to Moderate flash flood risk likely over few watersheds & neighbourhoods of following Met Sub-divisions during next 24 hours.</p> <p>Gujarat Region - Banaskantha, Bharuch, Mahesana, Navsari, Patan, Sabar Kantha, Surat, Tapi and Valsad districts.</p> <p>Konkan & Goa - South Goa, Raigarh, Ratnagiri, Sindhudurg and Thane districts.</p> <p>Surface runoff/ Inundation may occur at some fully saturated soils & low-lying areas over Area of Concern (AoC) as shown in map due to expected rainfall occurrence in next 24 hours.</p>	<p>Product: GFS FFR Timescale: 24-hr Region: "REGIONAL"</p> <p>Product Date: 2025-07-27 06:00 UTC Valid Date: 2025-07-28 06:00 UTC</p> 

24 hours Outlook for the Flash Flood Risk (FFR) till 1130 IST of 28-07-2025 :

Low to Moderate flash flood risk likely over few watersheds & neighbourhoods of following Met Sub-divisions during next 24 hours.

Himachal Pradesh - Kangra, Lahul&Spiti, Mandi and Sirmaur districts. Uttarakhand - Almora, Bageshwar, Chamoli, Champawat, Dehradun, Nanital, Pauri Garhwal, Pithoragarh, Rudraprayag, Tehri Garwal and Uttarkashi districts.

Surface runoff/ Inundation may occur at some fully saturated soils & low-lying areas over Area of Concern (AoC) as shown in map due to expected rainfall occurrence in next 24 hours.



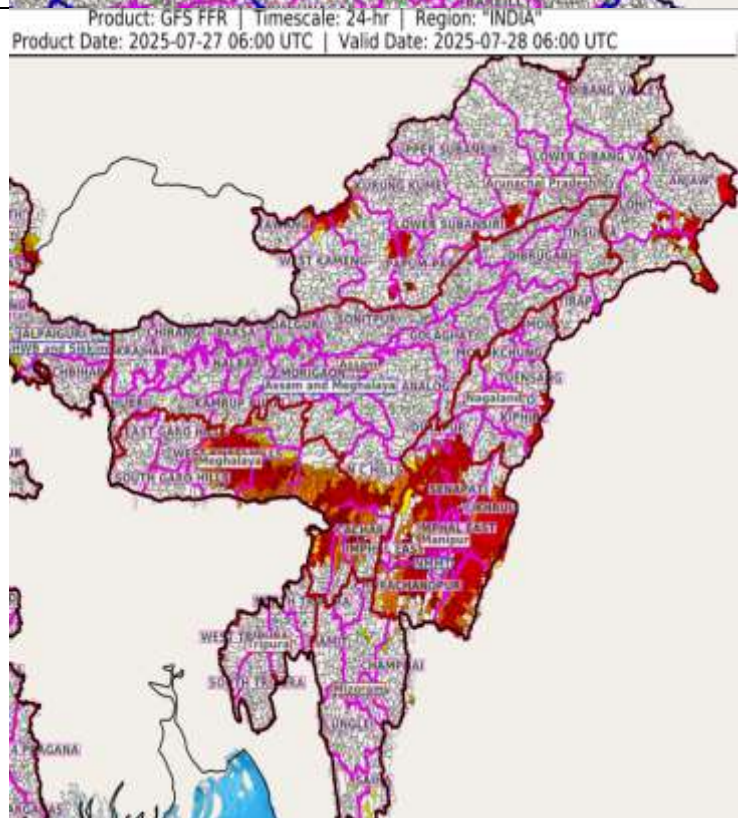
24 hours Outlook for the Flash Flood Risk (FFR) till 1130 IST of 28-07-2025 :

Low to Moderate flash flood risk likely over few watersheds & neighbourhoods of following Met Sub-divisions during next 24 hours.

Arunachal Pradesh - Changlang, Dibang Valley, East Kameng, East Siang, Lohit, Papum-Pare, Tawang, Tirap, West Kameng, West Siang, Anjaw and Kurung Kumey districts. Assam & Meghalaya - Cachar, Kamrup Rural, N.C Hills, Karimganj, East Garo Hills, East Khasi Hills, West Khasi Hills and Jaintia Hills districts. Nagaland Mizoram Manipur Tripura (NMMT) –

Manipur- Bishnupur, Chandel, Churachandpur, Imphal East, Imphal West, Senapati, Tamenglong, Thoubal, Ukhrul, Mizoram- Aizawl, Champhai, Lawngtlai, Saiha, Nagaland- Dimapur, Kiphire, Kohima, Peren and Tuensang districts.

Surface runoff/ Inundation may occur at some fully saturated soils & low-lying areas over Area of Concern (AoC) as shown in map due to expected rainfall occurrence in next 24 hours.



Legends & abbreviations:

- ❖ **Heavy Rain:**64.5-115.5mm; **Very Heavy Rain:**115.6-204.4mm; **Extremely Heavy Rain:** >204.4mm.
- ❖ **Obsy:** Observatory; Automatic Weather Station; **ARG:** Automatic Rain Gauge; **dist:** District; **NH:** National Highway; **KVK:** Krishi Vigyan Kendra; **DVC:** Damodar Valley Corporation; **PTO:** Part Time Office, **Aero:** Aerodrome, **IAF:** Indian Air Force.
- ❖ **Region wise classification of meteorological Sub-Divisions:**
 - **Northwest India:** Western Himalayan Region (Jammu-Kashmir-Ladakh-Gilgit-Baltistan-Muzaffarabad, Himachal Pradesh and Uttarakhand); Punjab, Haryana-Chandigarh-Delhi; West Uttar Pradesh, East Uttar Pradesh, West Rajasthan and East Rajasthan.
 - **Central India:** West Madhya Pradesh, East Madhya Pradesh, Vidarbha and Chhattisgarh.
 - **East India:** Bihar, Jharkhand, Sub-Himalayan West Bengal & Sikkim; Gangetic West Bengal, Odisha and Andaman & Nicobar Islands.
 - **Northeast India:** Arunachal Pradesh, Assam & Meghalaya and Nagaland, Manipur, Mizoram & Tripura.
 - **West India:** Gujarat Region, Saurashtra & Kutch, Konkan & Goa, Madhya Maharashtra and Marathawada.
 - **South India:** Coastal Andhra Pradesh & Yanam, Telangana, Rayalaseema, Coastal Karnataka, North Interior Karnataka, South Interior Karnataka, Kerala & Mahe, Tamil Nadu, Puducherry & Karaikal and Lakshadweep.

LEGENDS

1. अंडमान और निकोबार द्वीपसमूह

2. अरुणाचल प्रदेश

3. असम और मेघालय

4. नागालैंड, मणिपुर, मिजोरम और त्रिपुरा

5. उप-हिमालयी पश्चिम बंगाल और सिक्किम

6. गंगीय पश्चिम बंगाल

7. ओडिशा

8. झारखंड

9. बिहार

10. पूर्वी उत्तर प्रदेश

11. पश्चिम उत्तर प्रदेश

12. उत्तराखंड

13. हरियाणा, चंडीगढ़ और दिल्ली

14. पंजाब

15. हिमाचल प्रदेश

16. जम्मू और कश्मीर और लद्दाख

17. पश्चिम राजस्थान

18. पूर्वी राजस्थान

19. पश्चिम मध्य प्रदेश

20. पूर्वी मध्य प्रदेश

21. गुजरात

22. सौराष्ट्र

23. कोंकण और गोवा

24. मध्य महाराष्ट्र

25. मराठवाड़ा

26. विदर्भ

27. छत्तीसगढ़

28. तटीय आंध्र प्रदेश और यनम

29. तेलंगाना

30. रायलसीमा

31. तमिलनाडु, पुडुचेरी और कराईकल

32. तटीय कर्नाटक

33. आंतरिक उत्तरी कर्नाटक

34. आंतरिक दक्षिणी कर्नाटक

35. केरल और माहे

36. लक्षद्वीप



1. Andaman & Nicobar Islands

2. Arunachal Pradesh

3. Assam & Meghalaya

4. Nagaland, Manipur, Mizoram & Tripura

5. Sub-Himalayan West Bengal & Sikkim

6. Gangetic West Bengal

7. Odisha

8. Jharkhand

9. Bihar

10. East Uttar Pradesh

11. West Uttar Pradesh

12. Uttarakhand

13. Haryana, Chandigarh & Delhi

14. Punjab

15. Himachal Pradesh

16. Jammu & Kashmir and Ladakh

17. West Rajasthan

18. East Rajasthan

19. West Madhya Pradesh

20. East Madhya Pradesh

21. Gujarat

22. Saurashtra

23. Konkan & Goa

24. Madhya Maharashtra

25. Marathwada

26. Vidarbha

27. Chhattisgarh

28. Coastal Andhra Pradesh & Yanam

29. Telangana

30. Rayalaseema

31. Tamilnadu, Puducherry & Karaikal

32. Coastal Karnataka

33. North Interior Karnataka

34. South Interior Karnataka

35. Kerala & Mahe

36. Lakshadweep

SPATIAL DISTRIBUTION (% of Stations reporting)

% Stations	Category	% Stations	Category
76-100	Widespread (WS/Most Places)	26-50	Scattered (SCT/A Few Places)
51-75	Fairly Widespread (FWS/Many Places)	1-25	Isolated (ISOL)



Fog



Heavy Snow



Cold Wave



Heavy Rain



Dust Storm



Cold Day



Very Heavy Rain



Heat Wave



Ground Frost



Extremely Heavy Rain



Warm Night



Thunder & Lightning



Hot Day



Hailstorm



Hot & Humid



Dust Raising Winds



Strong Surface Winds

COLOUR CODED WARNING

No Warning (No Action)

Watch (Be Aware)

Alert (Be Prepared To Take Action)

Warning (Take Action)

Probabilistic Forecast

Terms	Probability of Occurrence (%)
Unlikely	< 25
Likely	25 - 50
Very Likely	50 - 75
Most Likely	> 75

* Red colour warning does not mean "Red Alert", Red colour warning means "Take Action".

Forecast and Warning for any day is valid from 0830 hours IST of day till 0830 hours IST of next day.

For more details, kindly visit <https://mausam.imd.gov.in> or contact: 011-2434-4599

(Service to the Nation since 1875)

DEFINITION/CRITERIA

Rain/ Snow *

Heavy: 64.5 to 115.5 mm/cm *
Very Heavy: 115.6 to 204.4 mm/cm *
Extremely Heavy: > 204.4 mm/cm *

Heat Wave

When maximum temperature of a station reaches $\geq 40^{\circ}\text{C}$ for plains and $\geq 30^{\circ}\text{C}$ for hilly regions
(a) Based on Departure from normal

Heat Wave: Maximum Temperature Departure from normal 4.5°C to 6.4°C .

Severe Heat Wave: Maximum Temperature Departure from normal $\geq 6.5^{\circ}\text{C}$

(b). Based on Actual maximum temperature

Heat Wave: When actual maximum temperature $\geq 45^{\circ}\text{C}$.

Severe Heat Wave: When actual maximum temperature $\geq 47^{\circ}\text{C}$.

(c). Criteria for heat wave for coastal stations

When maximum temperature departure is $> 4.5^{\circ}\text{C}$ from normal. Heat Wave may be described provided maximum temperature $\geq 37^{\circ}\text{C}$.

Warm Night

When maximum temperature remains 40°C

Warm Night: When minimum temperature departure 4.5°C to 6.4°C .

Severe Warm Night: When minimum temperature departure $> 6.4^{\circ}\text{C}$.

Cold Wave

When minimum temperature of a station $\leq 10^{\circ}\text{C}$ for plains and $\leq 0^{\circ}\text{C}$ for hilly regions.

(a). Based on departure

Cold Wave: Minimum Temperature Departure from normal -4.5°C to -6.4°C .

Severe Cold Wave: Minimum Temperature Departure from normal $\leq -6.5^{\circ}\text{C}$

(b) Based on actual Minimum Temperature (for Plains only)

Cold Wave: When Minimum Temperature is $\leq 4.0^{\circ}\text{C}$

Severe Cold Wave: When Minimum Temperature is $\leq 2.0^{\circ}\text{C}$

(c) For Coastal Stations

When Minimum Temperature departure is $\leq -4.5^{\circ}\text{C}$ & actual Minimum Temperature is $\leq 15^{\circ}\text{C}$

Cold Day

When minimum temperature of a station $\leq 10^{\circ}\text{C}$ for plains and $\leq 0^{\circ}\text{C}$ for hilly regions
Based on departure

Cold Day: Maximum Temperature Departure from normal -4.5°C to -6.4°C .

Severe Cold Day: Maximum Temperature Departure from normal $\leq -6.5^{\circ}\text{C}$

Fog

Phenomenon of small droplets suspended in air and the horizontal visibility $< 1\text{km}$

Moderate Fog: When the visibility between 500-200 metres

Dense Fog: when the visibility between 50- 200 metres

Very Dense Fog: when the visibility < 50 metres

Thunderstorm

Sudden electrical discharges manifested by a flash of light (Lightning) and a sharp rumbling sound (thunder)

Dust/Sand Storm

An ensemble of particles of dust or sand energetically lifted to great heights by a strong and turbulent wind.

Frost

Ice deposits on ground

Air temperature $\leq 4^{\circ}\text{C}$ (over Plains)

Squall

A strong wind that rises suddenly, lasts for atleast 1 minute.

Moderate: Wind speed 52-61 kmph

Severe: Wind speed 62-67 kmph

Very Severe: Wind speed > 67 kmph

Sea State

Effect of various waves in the sea over specific area

Rough to very rough: Wind speed 41-62 kmph (22-33 knots) & Wave height 2.5-6 metre

High to very high: Wind speed 63-117 kmph (34-63 knots) & Wave height 6-14 metre

Phenomenal: Wind speed > 117 kmph (> 63 knots) & Wave height > 14 metre

Cyclone

Cyclonic Storm: Wind speed 62-87 kmph (34-47 knots)

Severe Cyclonic Storm: Wind speed 88-117 kmph (48-63 knots)

Very Severe Cyclonic Storm: Wind speed 118-165 kmph (64 - 89 knots)

Extremely Severe Cyclonic Storm: Wind speed 166-220 kmph (90 -119 knots)

Super Cyclone Storm: Wind speed > 220 kmph (> 119 knots)

* Red colour warning does not mean "Red Alert", Red colour warning means "Take Action".

Forecast and Warning for any day is valid from 0830 hours IST of day till 0830 hours IST of next day.

For more details, kindly visit <https://mausam.imd.gov.in> or contact: 011-2434-4599

(Service to the Nation since 1875)

Hot and Humid: When maximum temperatures remain 3°C above normal along with the above normal relative humidity.