



Government of India
Ministry of Earth Sciences
India Meteorological Department



Press Release

Date: 30th July, 2025

Time of Issue: 1345 hours IST

Subject: i) Heavy to very heavy rainfall likely over East Rajasthan and Madhya Pradesh during 30th July-01st August with isolated extremely heavy falls over East Rajasthan & West Madhya Pradesh on today, the 30th July, 2025.
ii) Heavy to very heavy rainfall likely to continue over northeast India during next 7 days.
iii) Subdued rainfall activities likely over south peninsular India during next 6-7 days and over central India from 01st August, 2025.

Realised weather during past 24 hours till 0830 hours IST of today, the 30th July, 2025:

- ❖ **Extremely heavy falls (≥ 21 cm)** has been recorded at isolated places over East Rajasthan and Madhya Pradesh.
- ❖ **Heavy to very heavy rainfall (7-20 cm)** has been recorded at isolated places over Jammu-Kashmir, Himachal Pradesh, West Uttar Pradesh, Assam & Meghalaya; **Heavy rainfall (7-11 cm)** at isolated places over East Uttar Pradesh, Vidarbha, Chhattisgarh, Bihar, Odisha, West Bengal, Arunachal Pradesh, Nagaland, Mizoram, Madhya Maharashtra and South Interior Karnataka.

For more details of realised weather, kindly refer [Annexure I](#).

i. Weather Systems, Forecast and Warnings (refer to Annexure II & III):

- ❖ The monsoon trough runs south of its normal position at mean sea level.
 - ❖ Yesterday's **low Pressure area** over northwest Madhya Pradesh & neighbourhood has become less marked at 1730 hrs IST of yesterday, the 29th July, 2025. However, the associated cyclonic circulation extending upto middle tropospheric levels tilting southwestwards with height persists over the same region.
 - ❖ An **upper air cyclonic circulation** lies over northwest Bay of Bengal and adjoining Gangetic West Bengal & Odisha in lower & middle tropospheric levels.
 - ❖ An **upper air cyclonic circulation** lies over southwest Rajasthan in lower tropospheric levels.
 - ❖ A **Western Disturbance** seen as a **cyclonic circulation** over Punjab and adjoining Pakistan in lower & middle tropospheric levels.
 - ❖ A **trough** runs from northwest Madhya Pradesh to northeast Bay of Bengal in lower tropospheric levels.
- Under the influence of these systems, the following weather is likely:

Northwest India:

- ✓ **Extremely heavy rainfall** very likely at isolated places over East Rajasthan on 30th July.
- ✓ Isolated **heavy rainfall** likely over Jammu-Kashmir on 31st July; Himachal Pradesh, Uttarakhand during 30th July-05th August; Punjab during 03rd-05th August; Haryana, Chandigarh & East Uttar Pradesh on 30th July & during 02nd-05th August; West Uttar Pradesh on 30th July & during 03rd-05th August; West Rajasthan during 30th July-01st August; East Rajasthan during 30th July-01st August and 04th & 05th August with isolated **very heavy rainfall** over Jammu-Kashmir, Himachal Pradesh on 30th; West Rajasthan on 30th & 31st; East Rajasthan on 31st July.
- ✓ Light/moderate rainfall at many places accompanied with thunderstorm, lightning likely over Western Himalayan region and some places over the plains during next 7 days.

West India:

- ✓ Isolated **heavy rainfall** likely over Konkan and Ghat areas of Madhya Maharashtra on 30th July.
- ✓ Light to moderate rainfall at many places very likely over the region during next 6-7 days.

Northeast India:

- ✓ Light/moderate rainfall at many places accompanied with **thunderstorm, lightning and isolated heavy rainfall** likely to continue over Arunachal Pradesh on 30th & 31st July; Assam & Meghalaya on 30th and Nagaland, Manipur, Mizoram & Tripura during 30th July-05th August with isolated **very heavy rainfall** over Arunachal Pradesh during 01st-05th August; Assam & Meghalaya during 31st July-05th August.

East & Central India:

- ✓ **Extremely heavy rainfall** very likely at isolated places over West Madhya Pradesh on 30th July.
- ✓ Isolated **heavy rainfall** likely over Sub-Himalayan West Bengal & Sikkim during 30th July-01st August & 05th August; Gangetic West Bengal, Odisha on 31st July; Bihar during 30th July-02nd August & 05th August; Jharkhand during 30th July-01st August; Chhattisgarh on 30th & 31st July; Madhya Pradesh on 31st July & 01st August with isolated **very heavy rainfall** over East Madhya Pradesh, Odisha & Gangetic West Bengal on 30th July; Sub-Himalayan West Bengal & Sikkim during 02nd-04th; Bihar on 03rd & 04th August.
- ✓ Light to moderate rainfall at most/many places accompanied with thunderstorm & lightning likely over the region during next 5 days.

South Peninsular India:

- ✓ Isolated **heavy rainfall** likely over South Interior Karnataka on 30th July; Tamil Nadu during 02nd-05th; Kerala & Mahe during 03rd-05th August.
- ✓ **Strong surface winds** (speed reaching 40-50 kmph) very likely over South Peninsular India during next 5 days.
- ✓ Light to moderate rainfall at some/many places over Kerala & Mahe, Lakshadweep, Karnataka, Rayalaseema, Coastal Andhra Pradesh & Yanam and Telangana during next 7 days.

Hot & Humid Weather warning:

- ✓ **Hot & humid weather** is likely to prevail over Tamil Nadu, Puducherry & Karaikal on 30th & 31st July.

Fishermen warning:

- ❖ Fishermen are advised to avoid venturing into the following from 30th July to 04th August 2025 to the following Areas:
 - Arabian Sea:**
 - ❖ Along and off Gujarat, Konkan & Goa coasts and adjoining sea areas during 30th July to 02nd August; Kerala, Karnataka coasts on 30th & 31st July; some parts of southeast and southwest Arabian Sea during 30th July to 04th August; Entire central Arabian Sea during 30th July to 2nd August; most parts of central Arabian Sea on 03rd & 04th August; southern parts of north Arabian Sea during 30th July to 02nd August; Along and off the Somalia coast and adjoining sea areas, south Oman and adjoining Yemen coast & adjoining sea areas during 30th July to 04th August.
- Bay of Bengal:**
- ❖ Few parts of westcentral Bay of Bengal for 30th July; Many parts of central Bay of Bengal & adjoining north Bay of Bengal on 31st July; few northern parts of eastcentral and westcentral Bay of Bengal on 01st August; some parts of southwest Bay of Bengal during 30th July to 04th August; Over Gulf of Mannar during 30th July and 04th August.

ii. Weather conditions and forecast over Delhi/NCR during 30th July to 02nd August, 2025 (Annexure IV)

For more details, kindly refer National Weather Bulletin:

https://mausam.imd.gov.in/responsive/all_india_forecast_bulletin.php

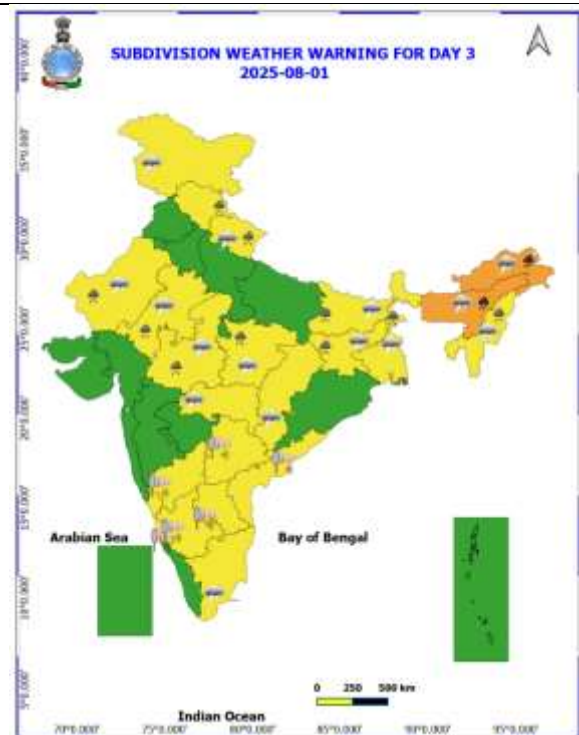
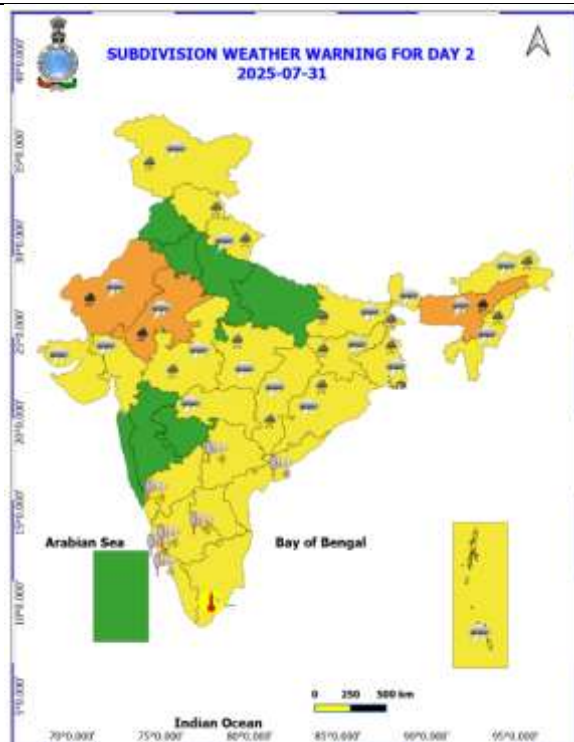
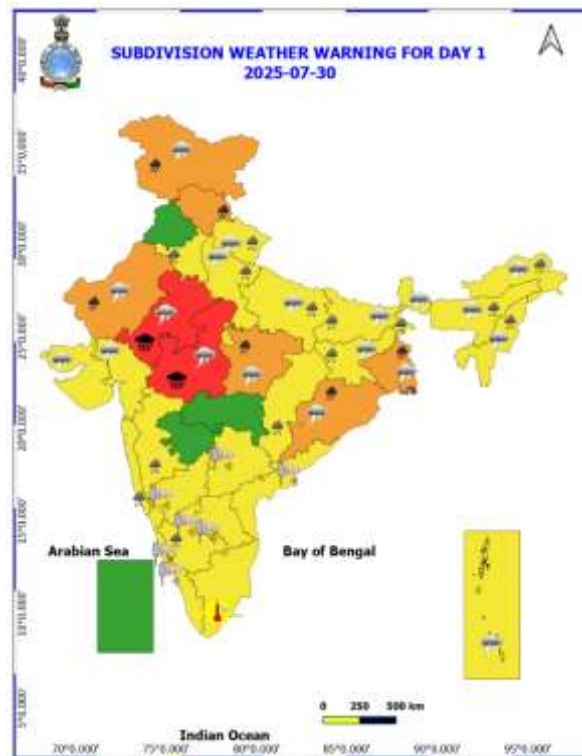
For District wise warnings refer: <https://mausam.imd.gov.in/responsive/districtWiseWarningGIS.php>

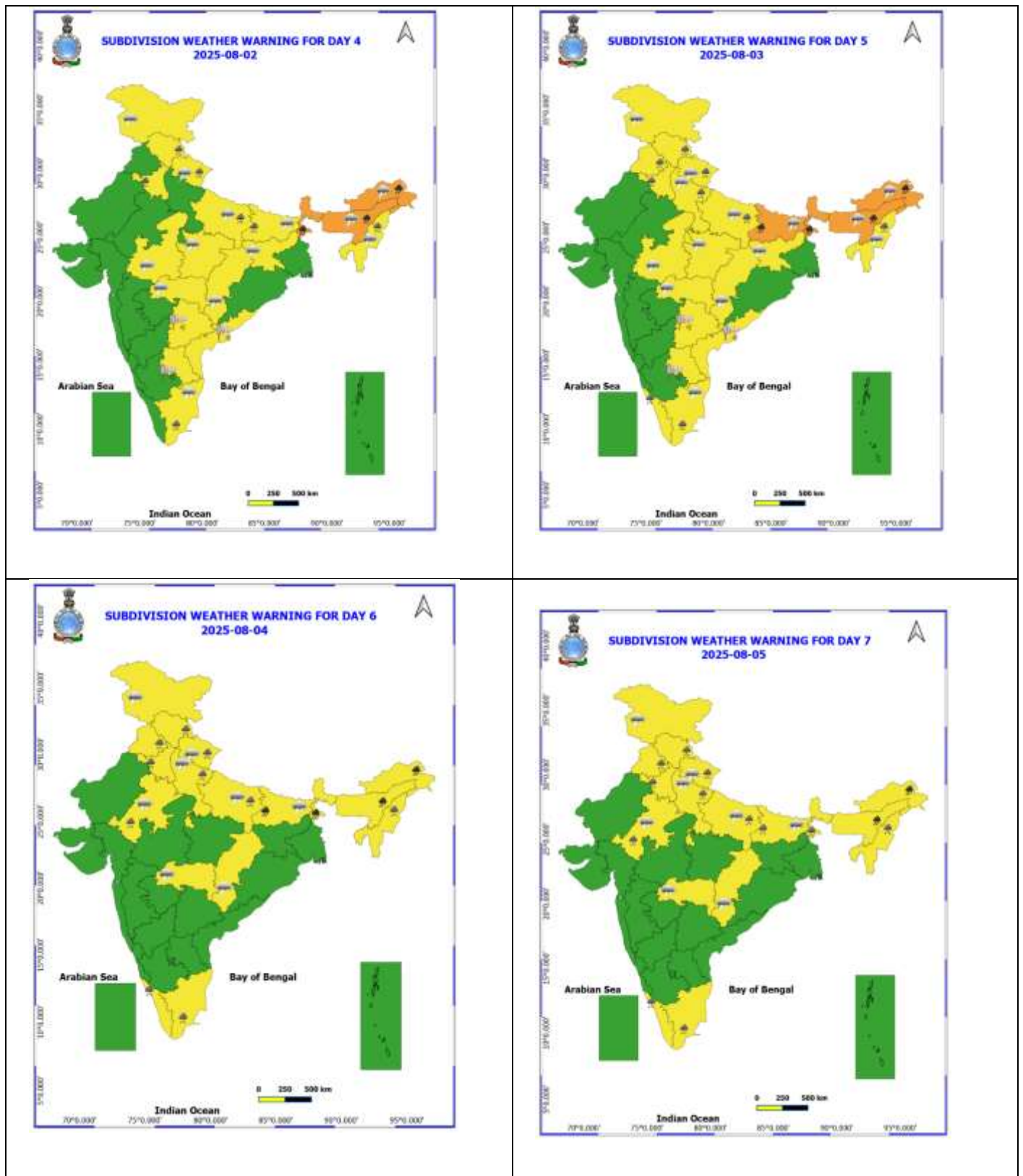
Rainfall recorded (in cm) during past 24 hours till 0830 hours IST of today, the 30th July:

- ❖ **West Madhya Pradesh:** Guna-aws (dist Guna) 32, Bamori (dist Guna) 25, Isagarh (dist Ashoknagar) 25, Badarwas (dist Shivpuri) 22, Shamshabad (dist Vidisha) 19, Salwani (dist Raisen) 19, Narwar (dist Shivpuri) 18, Nateran (dist Vidisha) 17, Pohri (dist Shivpuri) 17, Gairatgang (dist Raisen) 17, Badi (dist Raisen) 16, Vidisha (dist Vidisha) 16, Raisen-aws (dist Raisen) 16, Udaipura (dist Raisen) 16, Karhal (dist Sheopur) 15, Ashoknagar-aws (dist Ashoknagar) 15, Aron (dist Guna) 15, Bairad (dist Shivpuri) 15, Sheopur-aws (dist Sheopur) 15, Goharganj (dist Raisen) 15, Maksudangarh (dist Guna) 14, Kumbhraj (dist Guna) 14, Chachoda (dist Guna) 14, Raghogarh (dist Guna) 13, Ganjbasoda (dist Vidisha) 13, Kurwai (dist Vidisha) 13, Begumganj (dist Raisen) 13, Biaora (dist Rajgarh) 13, Narsingarh (dist Rajgarh) 13, Gulabganj (dist Vidisha) 13, Sehore-aws (dist Sehore) 12, Sironj (dist Vidisha) 12, Kolar (dist Bhopal) 12, Bareli (dist Raisen) 12, Kalapipal (dist Shajapur) 11, Deori (dist Raisen) 11, Kolaras (dist Shivpuri) 11, Sultanpur (dist Raisen) 11, Lateri (dist Vidisha) 10, Badoda (dist Sheopur) 10, Shivpuri (dist Shivpuri) 10, Gyaraspur (dist Vidisha) 10, Bhopal Arera Hills (dist Bhopal) 10, Navibagh Aet (dist Bhopal) 9, Bairagarh Airport (dist Bhopal) 9, Berasia (dist Bhopal) 9, Bankhedi (dist Narmadapuram) 9, Pathari (dist Vidisha) 9, Ichhawar (dist Sehore) 9, Pipariya (dist Narmadapuram) 8, Shyampur (dist Sehore) 8, Rajgarh (dist Rajgarh) 8, Bhitwar (dist Gwalior) 8, Khilchipur (dist Rajgarh) 8, Pachore (dist Rajgarh) 8, Zirapur (dist Rajgarh) 8, Gulana (dist Shajapur) 7, Sarangpur (dist Rajgarh) 7, Shujalpur (dist Shajapur) 7, Moman Badodiya (dist Shajapur) 7, Mau (dist Bhind) 7;
- ❖ **East Rajasthan:** Khandar Sr (dist Sawai Madhopur) 23, Malerainadunger Sr (dist Sawai Madhopur) 22, Sawaimadhopur Tesil Sr (dist Sawai Madhopur) 21, Chothkabarwara Sr (dist Sawai Madhopur) 19, Niwai (dist Tonk) 17, Shahabad (dist Baran) 16, Chabra (dist Baran) 15, Chipabarod Sr (dist Baran) 14, Atru Sr (dist Baran) 13, Kishanganj (dist Baran) 12, Pipalda Sr (dist Kota) 11, Tonk Vanasthali (dist Tonk) 10, Bonli (dist Sawai Madhopur) 10, Uniara / Aligarh (dist Tonk) 10, Dausa (dist Dausa) 10, Manohar Thana (dist Jhalawar) 10, Behror (dist Alwar) 9, Lalsot (dist Dausa) 9, Baran (dist Baran) 9, Aklera (dist Jhalawar) 9, Indergarh Sr (dist Bundi) 8, Malsisar Sr (dist Jhunjhunu) 7, Mangrol (dist Baran) 7, Tonk Tehsil Sr (dist Tonk) 7;
- ❖ **East Madhya Pradesh:** Deori (dist Sagar) 22, Gotegaon (dist Narsinghpur) 11, Tendukheda (dist Narsinghpur) 10, Gadarwara (dist Narsinghpur) 10, Kesli (dist Sagar) 10, Nowgong (dist Chhatarpur) 9, Khurai (dist Sagar) 8, Narayanganj (dist Mandla) 7;
- ❖ **Jammu-Kashmir:** Udampur (dist Udampur) 20, Reasi Arg (dist Reasi) 11;
- ❖ **Himachal Pradesh:** Chuari (dist Chamba) 18, Palampur (dist Kangra) 16, Kangra (dist Kangra) 12, Nadaun (dist Hamirpur) 8;
- ❖ **West Uttar Pradesh:** Agra (cwc) (dist Agra) 12;
- ❖ **Sub-Himalayan West Bengal:** Jhallong (dist Kalimpong) 11;
- ❖ **Arunachal Pradesh:** Lekang Arg (dist Namsai) 11;
- ❖ **Assam & Meghalaya:** Dalgaon Arg (dist Darrang) 11, Cherrapunji(rkm) (dist East Khasi Hills) 10, Mawsynram (dist East Khasi Hills) 9, Cherrapunji (dist East Khasi Hills) 8;
- ❖ **Odisha:** Hatadihi (dist Keonjhar) 11, Kantapada (dist Cuttack) 8, Paikmal (dist Bargarh) 8, Biridi (dist Jagatsinghpur) 7, Swam-patna (dist Keonjhar) 7, Pattamundai (dist Kendrapara) 7, Derabis (dist Kendrapara) 7, Niali (dist Cuttack) 7, Jagatsinghpur (dist Jagatsinghpur) 7, Bangamunda (dist Bolangir) 7;
- ❖ **Nagaland & Mizoram:** Kolasib Agri (dist Kolasib) 10, Kolasib_aws (dist Kolasib) 8, Wokha Sadar Nsdma (dist Wokha) 7;
- ❖ **South Interior Karnataka:** Agumbe Aws (dist Shivamogga) 9;
- ❖ **Chhattisgarh:** Bhanupratappur (dist Kanker) 9, Mainpur (dist Gariaband) 7;
- ❖ **Gangetic West Bengal:** Canning (dist South 24 Parganas) 8, Mo Saltlake (dist North 24 Parganas) 6;
- ❖ **Madhya Maharashtra:** Surgana (dist Nashik) 7, Radhanagari (dist Kolhapur) 7;
- ❖ **Vidarbha:** Korchi (dist Gadchiroli) 7;
- ❖ **East Uttar Pradesh:** Fatehpur Tehsil (dist Barabanki) 7, Dabri Fmo (dist Farrukhabad) 7;
- ❖ **Bihar:** Rafiganj (dist Aurangabad) 7

Table-1								
7 Days Rainfall Forecast								
S.No.	Subdivision	30- Jul	31- Jul	1- Aug	2- Aug	3- Aug	4- Aug	5- Aug
		Day 1	Day 2	Day 3	Day 4	Day 5	Day 6	Day 7
1	ANDAMAN & NICOBAR ISLANDS	FWS	FWS	FWS	WS	WS	FWS	FWS
2	ARUNACHAL PRADESH	FWS	FWS	WS	WS	WS	WS	WS
3	ASSAM & MEHGHALAYA	FWS	FWS	FWS	WS	WS	WS	WS
4	NAGALAND, MANIPUR, MIZORAM AND TRIPURA	FWS	FWS	FWS	WS	WS	WS	WS
5	SUB HIMALAYAN WEST BENGAL & SIKKIM	WS	WS	WS	WS	WS	WS	WS
6	GANGETIC WEST BENGAL	WS	WS	WS	FWS	FWS	FWS	FWS
7	ODISHA	FWS	SCT	SCT	SCT	ISOL	ISOL	ISOL
8	JHARKHAND	FWS	FWS	SCT	SCT	SCT	FWS	FWS
9	BIHAR	FWS	SCT	FWS	FWS	FWS	FWS	SCT
10	EAST UTTAR PRADESH	FWS	SCT	ISOL	SCT	FWS	FWS	FWS
11	WEST UTTAR PRADESH	FWS	FWS	SCT	SCT	SCT	FWS	FWS
12	UTTARAKHAND	FWS	FWS	FWS	FWS	FWS	WS	WS
13	HARYANA, CHANDIGARH & DELHI	FWS	SCT	SCT	FWS	FWS	FWS	FWS
14	PUNJAB	SCT	SCT	SCT	SCT	FWS	FWS	FWS
15	HIMACHAL PRADESH	WS	WS	FWS	FWS	FWS	WS	WS
16	JAMMU AND KASHMIR AND LADAKH	WS	FWS	SCT	SCT	ISOL	SCT	FWS
17	WEST RAJASTHAN	FWS	WS	FWS	ISOL	ISOL	ISOL	ISOL
18	EAST RAJASTHAN	WS	WS	FWS	SCT	SCT	ISOL	ISOL
19	WEST MADHYA PRADESH	WS	FWS	FWS	SCT	SCT	SCT	SCT
20	EAST MADHYA PRADESH	FWS	FWS	FWS	FWS	SCT	SCT	SCT
21	GUJRAT REGION	FWS	FWS	SCT	SCT	SCT	SCT	SCT
22	SAURASHTRA & KUTCH	SCT	SCT	SCT	SCT	SCT	SCT	SCT
23	KONKAN & GOA	WS	WS	WS	FWS	WS	FWS	FWS
24	MADHYA MAHARASHTRA	SCT	SCT	ISOL	ISOL	ISOL	ISOL	ISOL
25	MARATHWADA	ISOL	ISOL	ISOL	ISOL	ISOL	ISOL	ISOL
26	VIDARBHA	WS	FWS	FWS	SCT	SCT	SCT	SCT
27	CHHATTISGARH	FWS	FWS	SCT	SCT	SCT	SCT	SCT
28	COASTAL ANDHRA PRADESH	ISOL	ISOL	ISOL	ISOL	ISOL	ISOL	ISOL
29	TELANGANA	ISOL	ISOL	ISOL	ISOL	ISOL	ISOL	ISOL
30	RAYALASEEMA	ISOL	ISOL	ISOL	ISOL	ISOL	ISOL	ISOL
31	TAMILNADU & PUDUCHERRY	ISOL	ISOL	SCT	SCT	SCT	SCT	SCT
32	COSTAL KARNATAKA	WS	WS	WS	WS	FWS	FWS	FWS
33	NORTH INTERIOR KARNATAKA	ISOL	ISOL	ISOL	SCT	SCT	ISOL	ISOL
34	SOUTH INTERIOR KARNATAKA	SCT	SCT	SCT	SCT	SCT	SCT	SCT
35	KERALA AND MAHE	FWS	FWS	FWS	WS	WS	WS	WS
36	LAKSHADWEEP	FWS	FWS	FWS	WS	WS	WS	WS

- As the lead period increases forecast accuracy decrease.





- Action may be taken based on ORANGE AND REDCOLOUR warnings.
- Vulnerable regions likely urban and hilly areas action may be initiated for heavy rainfall warning.
- As the lead period increases forecast accuracy decreases.

Detailed districtwise Multi Hazard weather warning for next five days available at <https://mausam.imd.gov.in/responsive/districtWiseWarningGIS.php>

Weather forecast over Delhi/NCR during 30th July to 02nd August 2025**Past Weather:**

There has been fall in the minimum temperature up to 1 - 2°C and fall in maximum temperature up to 6°C over Delhi/NCR during the past 24 hours. The maximum and minimum temperatures over Delhi were around 28 to 29°C and 25 to 26°C respectively. The minimum temperature was near normal and the maximum temperature was below normal up to 4 - 6°C. Generally cloudy sky conditions with predominant surface wind from the east direction with wind speeds up to 10 kmph prevailed during the past 24 hours. Light to moderate rainfall has been recorded in most places with isolated places heavy rainfall over Delhi. Generally cloudy sky conditions with a wind speed of less than 18 kmph from the northeast direction prevailed over the region in the forenoon today.

Weather Forecast:

30.07.2025: Generally cloudy sky. One or two spell of light rain very likely at many places with possibility of moderate rain in isolated places accompanied with thunderstorms/lightning during evening/night. The maximum temperatures over Delhi are likely to be in the range of 30 to 32°C. The maximum temperature will be below normal up to 2 to 4°C. The predominant surface wind will likely be from the southeast direction with a wind speed of 10-15 kmph in the afternoon. The wind speed will remain same to 10-15 kmph from the southeast direction during evening and night.

31.07.2025: Generally cloudy sky. Light to moderate rain accompanied with thunderstorms/lightning. The maximum and minimum temperatures over Delhi are likely to be in the range of 30 to 32°C and 23 to 25°C respectively. The minimum temperature will be below normal up to 2 to 4°C and the maximum temperature will be below normal up to 2 to 4°C. The predominant surface wind will likely be from the southeast direction with a wind speed of less than 08-10 kmph during the morning hours. The wind speed will gradually increase becoming 10-15 kmph from the southeast direction in the afternoon. It will remain same to 10-15 kmph from the southeast direction during the evening and night.

01.08.2025: Partly cloudy sky. Very light to light rain accompanied with thunderstorms/lightning. The maximum and minimum temperatures over Delhi are likely to be in the range of 33 to 35°C and 23 to 25°C respectively. The minimum temperature will be below normal up to 2 to 4°C and the maximum temperature will be near normal. The predominant surface wind will likely be from the east direction with a wind speed of less than 10-15 kmph during the morning hours. The wind speed will remain less than 10-15 kmph from the southeast direction in the afternoon. It will decrease becoming less than 10 kmph from the southeast direction during the evening and night.

02.08.2025: Partly cloudy sky. Very light to light rain accompanied with thunderstorm/lightning. The maximum and minimum temperatures over Delhi are likely to be in the range of 33 to 35°C and 23 to 25°C respectively. The minimum temperature will be below normal up to 2 to 4°C and the maximum temperature will be near normal. The predominant surface wind will likely be from the southeast direction with a wind speed of 08-10 kmph during the morning hours. The wind speed will remain same 08-10 kmph from the southeast direction in the afternoon. It will remain same 05-10 kmph from the southeast direction during the evening and night.

Impact expected and Action Suggested due to light to moderate rainfall with thunderstorm/lightning:

- Be cautious and take precautionary measures, though there is the likelihood of thunderstorms/lightning.
- Damage to standing crops, Minor to major damage to power and communication lines due to breaking of branches, Partial damage to vulnerable structures due to strong winds, Loose objects may fly.
- People are advised to keep a watch on the weather for worsening conditions and be ready to move to safer places accordingly, stay indoors, close windows & doors and avoid travel if possible, take safe shelters; do not take shelter under trees, do not lie on concrete floors and do not lean against concrete walls, unplug electrical/ electronic appliances, immediately get out of water bodies, keep away from all the objects that conduct electricity.

Impact & Action Suggested due to

- ✓ **Extremely heavy rainfall** at isolated places over East Rajasthan and West Madhya Pradesh on 30th July.
- ✓ **Very heavy rainfall** over Jammu-Kashmir, Himachal Pradesh, East Madhya Pradesh, Odisha & Gangetic West Bengal on 30th; West Rajasthan on 30th & 31st; East Rajasthan on 31st; Arunachal Pradesh during 01st-05th August; Assam & Meghalaya during 31st July-05th August; Sub-Himalayan West Bengal & Sikkim during 02nd-04th; Bihar on 03rd & 04th August.

Impact Expected

- Localized Flooding of roads, water logging in low lying areas and closure of underpasses mainly in urban areas of the above region.
- Occasional reduction in visibility due to heavy rainfall.
- Disruption of traffic in major cities due to water logging in roads leading to increased travel time.
- Minor damage to kutcha roads.
- Possibilities of damage to vulnerable structure.
- Localized Landslides/Mudslides/landslips/mudslips/landsinks/mudsinks.
- Damage to horticulture and standing crops in some areas due to inundation.
- It may lead to riverine flooding in some river catchments (for riverine flooding please visit Web page of CWC)

Action Suggested

- Check for traffic congestion on your route before leaving for your destination.
- Follow any traffic advisories that are issued in this regard.
- Avoid going to areas that face the water logging problems often.
- Avoid staying in vulnerable structure.

Agromet advisories for likely impact of Heavy / Heavy to Very Heavy / Extremely Heavy Rainfall

- In **East Rajasthan**, postpone sowing of rice nurseries, maize, soybean and black gram and make arrangement for removal of excess water from already sown fields in **Southeastern Humid Plain Zone**. Make provision to drain out excess water from green gram, pearl millet, cluster bean and sesame in **Sub Humid Southern Plain** and **Aravali Hill Zone** and **Flood Prone Eastern Plain Zone**; from soybean, cotton, black gram and maize in **Southern Humid Plain Zone**; from pearl millet, maize, groundnut and vegetables in **Semi Arid Eastern Plain Zone**.
- In **Madhya Pradesh**, postpone sowing of pearl millet and vegetables and arrange for proper drainage from already sown black gram, green gram, soybean, pearl millet and vegetables fields in **Gird Zone** till cessation of heavy rains. Arrange proper drainage facilities in the fields of rice, soybean, maize, sugarcane and vegetables in **Central Narmada Valley Zone**; soybean, groundnut, black gram and cotton in **Malwa Plateau Zone**; soybean, rice, maize and pigeon pea in **Vindhyan Plateau Zone**.
- In **Madhya Maharashtra**, make arrangement to drain out excess water from rice and finger millet fields in *ghat* areas.
- In **Uttarakhand**, maintain proper drainage channels in fields of rice in **Bhabar and Tarai Zone**, black gram in **Hill Zone** and rice, barnyard millet, finger millet and cucumber in **Sub Humid SubTropic Zone**.
- In **Himachal Pradesh**, provide drainage channels in low-lying areas in rice, maize, pulses and vegetables to prevent water stagnation in **Sub-Montane & Low Hills Sub-Tropical Zone**. Strengthen plant supports for creepers and tall vegetable crops (e.g., tomato, capsicum). In **High Hills Sub Temperate Wet Zone**, provide proper drainage channels in vegetables, maize, finger millets and kidney beans.
- In **Bihar**, provide adequate drainage in the fields of paddy, Pigeon pea, kharif maize, Okra and plantations in **South Bihar Alluvial Zone**.
- In **West Bengal**, make proper arrangements for drainage in vegetable beds, standing vegetable crops and betel gardens in **Coastal Saline Zone**.
- In **Odisha**, ensure proper drainage in all crop fields (especially maize and vegetables) in high rainfall areas of **Eastern and South-Eastern Ghat Zones** to prevent waterlogging. In **North Eastern Coastal Plain Zone**, drain out excess water from rice nurseries, jute and vegetable fields.

- In **Jammu & Kashmir**, postpone irrigation in transplanted rice and vegetables. Do not allow excess rainwater stagnation in maize, pulses and vegetable fields in **Sub Tropical Zone**. In **Intermediate Zone**, postpone intercultural operations in maize and vegetables. Ensure proper drainage in *kharif* pulses. In **Valley Temperate Zone**, maintain proper drainage channels in pulses and beans to remove excess water.
- In **Arunachal Pradesh**, postpone sowing of finger millet and fresh transplanting of rice (in low land). Provide drainage in WRC rice, finger millet and maize.
- In **Meghalaya**, maintain proper drainage channels around the nursery beds. Make provision for draining out excess water from vegetable fields and repair bunds in lowland paddy fields.
- In **Mizoram**, harvest matured cobs of maize. Create strong bunds around rice fields to retain rainwater and reduce runoff.

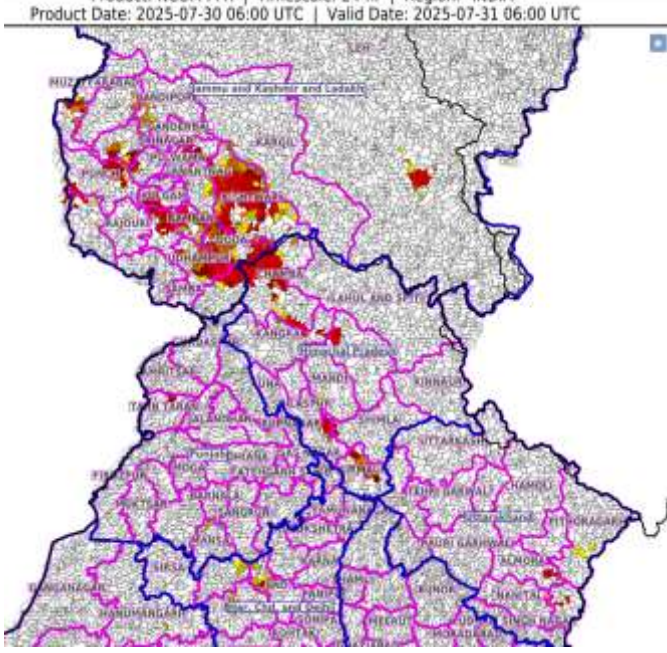
Livestock / Fishery

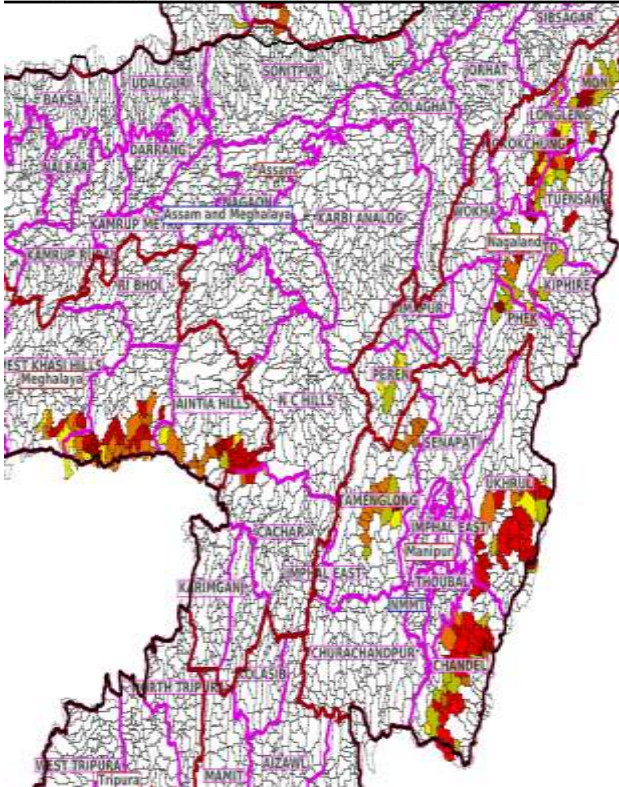
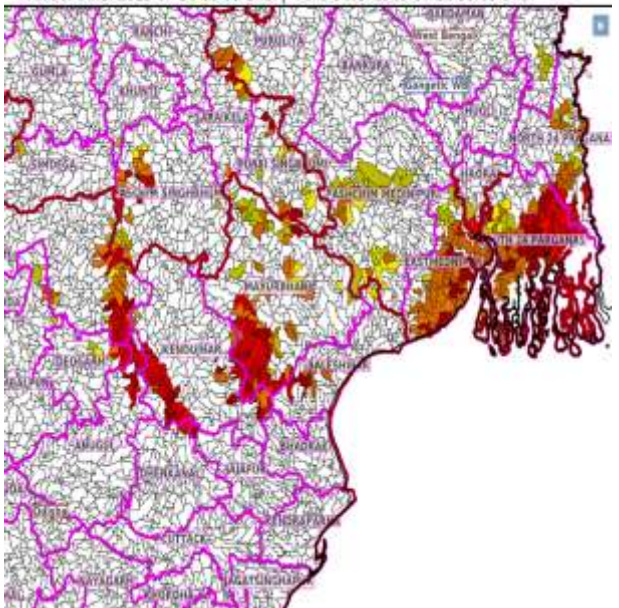
- Keep the animals inside the shed during heavy rainfall and provide them balanced feed.
- Store feed and fodder in a safe place to prevent spoilage.
- Construct an outlet with proper netting around the ponds to drain out excess water, thereby preventing fish from escaping in case of overflow.

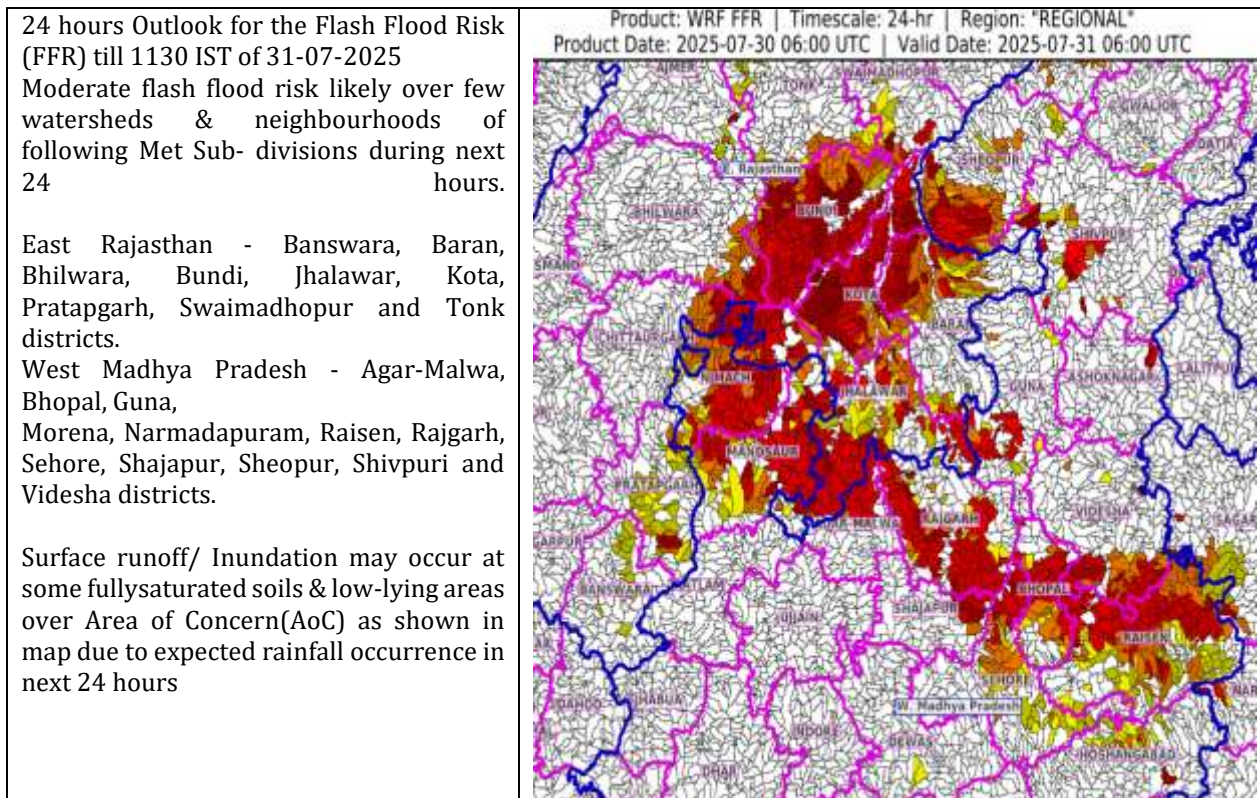
Agromet advisories for likely impact of Thunderstorm / Gusty Winds / Squally Winds

- Provide mechanical support to horticultural crops and staking or support to vegetables and young fruit plants / fruit-bearing plants to avoid lodging due to strong winds.

Flash flood guidance:

<p>24 hours Outlook for the Flash Flood Risk (FFR) till 1130 IST of 31-07-2025</p> <p>Low to Moderate flash flood risk likely over few watersheds & neighbourhoods of following Met Sub- divisions during next 24 hours.</p> <p>Himachal Pradesh - Chamba, Kangra, Kullu, Mandi, Sirmaur and Solan districts.</p> <p>Jammu & Kashmir & Ladakh - Anantnag, Badgam, Bandipore, Baramula, Doda, Ganderwal, Kathua, Kistwar, Kulgam, Kupwara, Punch, Riasi, Udhampur, Kargil, Leh And Ladakh, Mirpur and Muzaffarabad districts.</p> <p>Uttarakhand - Almora, Champawat and Pithoragarh districts.</p> <p>Surface runoff/ Inundation may occur at some fullysaturated soils & low-lying areas over Area of Concern(AoC) as shown in map due to expected rainfall occurrence in next 24 hours.</p>	<p>Product: NCUM FFR Timescale: 24-hr Region: 'INDIA'</p> <p>Product Date: 2025-07-30 06:00 UTC Valid Date: 2025-07-31 06:00 UTC</p> 
---	--

<p>24 hours Outlook for the Flash Flood Risk (FFR) till 1130 IST of 31-07-2025</p> <p>Low to Moderate flash flood risk likely over few watersheds & neighbourhoods of following Met Sub- divisions during next 24 hours.</p> <p>Assam & Meghalaya - East Khasi Hills, West Khasi Hills and Jaintia Hills districts.</p> <p>Nagaland Mizoram Manipur Tripura (NMMT)</p> <p>Manipur: Chandel, Senapati, Tamenglong and Ukhrul districts</p> <p>Nagaland: Kiphire, Longleng, Mokokchung, Mon, Peren, Phek, Tuensang, and Zunheboto districts</p> <p>Surface runoff/ Inundation may occur at some fully saturated soils & low-lying areas over Area of Concern (AoC) as shown in map due to expected rainfall occurrence in next 24 hours</p>	<p>Product: WRF FFR Timescale: 24-hr Region: "INDIA"</p> <p>Product Date: 2025-07-30 06:00 UTC Valid Date: 2025-07-31 06:00 UTC</p> 
<p>24 hours Outlook for the Flash Flood Risk (FFR) till 1130 IST of 31-07-2025</p> <p>Low to Moderate flash flood risk likely over few watersheds & neighbourhoods of following Met Sub- divisions during next 24 hours.</p> <p>Odisha - Anugul, Baleshwar, Deogarh, Kendujhar, Mayurbhanj and Sundargarh districts.</p> <p>Gangetic West Bengal - East Medinipur, Haora, North 24 Praganas, Pashchim Medinipur, Puruliya and South 24 Parganas districts.</p> <p>Surface runoff/ Inundation may occur at some fully saturated soils & low-lying areas over Area of Concern (AoC) as shown in map due to expected rainfall occurrence in next 24 hours</p>	<p>Product: WRF FFR Timescale: 24-hr Region: "INDIA"</p> <p>Product Date: 2025-07-30 06:00 UTC Valid Date: 2025-07-31 06:00 UTC</p> 

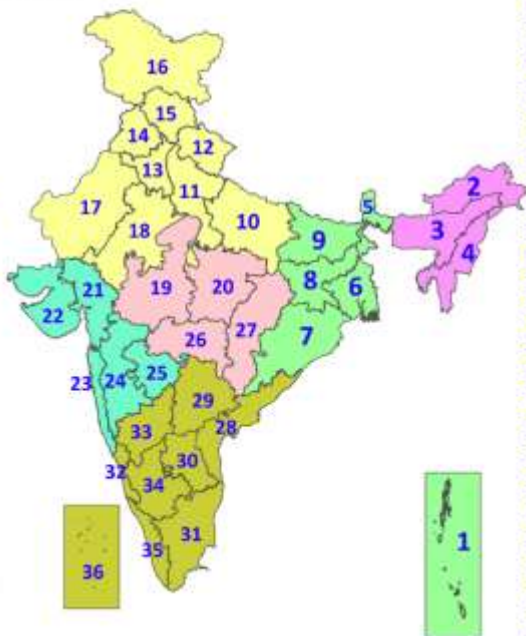


Legends & abbreviations:

- ❖ **Heavy Rain:**64.5-115.5mm; **Very Heavy Rain:**115.6-204.4mm; **Extremely Heavy Rain:** >204.4mm.
- ❖ **Obsy:** Observatory; Automatic Weather Station; **ARG:** Automatic Rain Gauge; **dist:** District; **NH:** National Highway; **KVK:** Krishi Vigyan Kendra; **DVC:** Damodar Valley Corporation; **PTO:** Part Time Office, **Aero:** Aerodrome, **IAF:** Indian Air Force.
- ❖ **Region wise classification of meteorological Sub-Divisions:**
 - **Northwest India:** Western Himalayan Region (Jammu-Kashmir-Ladakh-Gilgit-Baltistan-Muzaffarabad, Himachal Pradesh and Uttarakhand); Punjab, Haryana-Chandigarh-Delhi; West Uttar Pradesh, East Uttar Pradesh, West Rajasthan and East Rajasthan.
 - **Central India:** West Madhya Pradesh, East Madhya Pradesh, Vidarbha and Chhattisgarh.
 - **East India:** Bihar, Jharkhand, Sub-Himalayan West Bengal & Sikkim; Gangetic West Bengal, Odisha and Andaman & Nicobar Islands.
 - **Northeast India:** Arunachal Pradesh, Assam & Meghalaya and Nagaland, Manipur, Mizoram & Tripura.
 - **West India:** Gujarat Region, Saurashtra & Kutch, Konkan & Goa, Madhya Maharashtra and Marathawada.
 - **South India:** Coastal Andhra Pradesh & Yanam, Telangana, Rayalaseema, Coastal Karnataka, North Interior Karnataka, South Interior Karnataka, Kerala & Mahe, Tamil Nadu, Puducherry & Karaikal and Lakshadweep.

LEGENDS

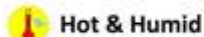
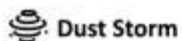
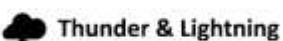
1. अंडमान और निकोबार द्वीपसमूह
2. अरुणाचल प्रदेश
3. असम और मेघालय
4. नागालैंड, मणिपुर, मिजोरम और त्रिपुरा
5. उप-हिमालयी पश्चिम बंगाल और सिक्किम
6. गंगीय पश्चिम बंगाल
7. ओडिशा
8. झारखंड
9. बिहार
10. पूर्वी उत्तर प्रदेश
11. पश्चिम उत्तर प्रदेश
12. उत्तराखंड
13. हरियाणा, चंडीगढ़ और दिल्ली
14. पंजाब
15. हिमाचल प्रदेश
16. जम्मू और कश्मीर और लद्दाख
17. पश्चिम राजस्थान
18. पूर्वी राजस्थान
19. पश्चिम मध्य प्रदेश
20. पूर्वी मध्य प्रदेश
21. गुजरात
22. सौराष्ट्र
23. कोंकण और गोवा
24. मध्य महाराष्ट्र
25. मराठवाड़ा
26. विदर्भ
27. छत्तीसगढ़
28. तटीय आंध्र प्रदेश और यनम
29. तेलंगाना
30. रायलसीमा
31. तमिलनाडु, पुडुचेरी और कराईकल
32. तटीय कर्नाटक
33. आंतरिक उत्तरी कर्नाटक
34. आंतरिक दक्षिणी कर्नाटक
35. केरल और माहे
36. लक्षद्वीप



1. Andaman & Nicobar Islands
2. Arunachal Pradesh
3. Assam & Meghalaya
4. Nagaland, Manipur, Mizoram & Tripura
5. Sub-Himalayan West Bengal & Sikkim
6. Gangetic West Bengal
7. Odisha
8. Jharkhand
9. Bihar
10. East Uttar Pradesh
11. West Uttar Pradesh
12. Uttarakhand
13. Haryana, Chandigarh & Delhi
14. Punjab
15. Himachal Pradesh
16. Jammu & Kashmir and Ladakh
17. West Rajasthan
18. East Rajasthan
19. West Madhya Pradesh
20. East Madhya Pradesh
21. Gujarat
22. Saurashtra
23. Konkan & Goa
24. Madhya Maharashtra
25. Marathwada
26. Vidarbha
27. Chhattisgarh
28. Coastal Andhra Pradesh & Yanam
29. Telangana
30. Rayalaseema
31. Tamilnadu, Puducherry & Karaikal
32. Coastal Karnataka
33. North Interior Karnataka
34. South Interior Karnataka
35. Kerala & Mahe
36. Lakshadweep

SPATIAL DISTRIBUTION (% of Stations reporting)

% Stations	Category	% Stations	Category
76-100	Widespread (WS/Most Places)	26-50	Scattered (SCT/A Few Places)
51-75	Fairly Widespread (FWS/Many Places)	1-25	Isolated (ISOL)



COLOUR CODED WARNING

No Warning (No Action)
Watch (Be Aware)
Alert (Be Prepared To Take Action)
Warning (Take Action)

Probabilistic Forecast

Terms	Probability of Occurrence (%)
Unlikely	< 25
Likely	25 - 50
Very Likely	50 - 75
Most Likely	> 75

* Red colour warning does not mean "Red Alert", Red colour warning means "Take Action".
Forecast and Warning for any day is valid from 0830 hours IST of day till 0830 hours IST of next day.
For more details, kindly visit <https://mausam.imd.gov.in> or contact: 011-2434-4599
(Service to the Nation since 1875)

DEFINITION/CRITERIA

Rain/ Snow *

Heavy: 64.5 to 115.5 mm/cm *
Very Heavy: 115.6 to 204.4 mm/cm *
Extremely Heavy: > 204.4 mm/cm *

Heat Wave

When maximum temperature of a station reaches $\geq 40^{\circ}\text{C}$ for plains and $\geq 30^{\circ}\text{C}$ for hilly regions
(a) Based on Departure from normal

Heat Wave: Maximum Temperature Departure from normal 4.5°C to 6.4°C .

Severe Heat Wave: Maximum Temperature Departure from normal $\geq 6.5^{\circ}\text{C}$

(b). Based on Actual maximum temperature

Heat Wave: When actual maximum temperature $\geq 45^{\circ}\text{C}$.

Severe Heat Wave: When actual maximum temperature $\geq 47^{\circ}\text{C}$.

(c). Criteria for heat wave for coastal stations

When maximum temperature departure is $> 4.5^{\circ}\text{C}$ from normal. Heat Wave may be described provided maximum temperature $\geq 37^{\circ}\text{C}$.

Warm Night

When maximum temperature remains 40°C

Warm Night: When minimum temperature departure 4.5°C to 6.4°C .

Severe Warm Night: When minimum temperature departure $> 6.4^{\circ}\text{C}$.

Cold Wave

When minimum temperature of a station $\leq 10^{\circ}\text{C}$ for plains and $\leq 0^{\circ}\text{C}$ for hilly regions.

(a). Based on departure

Cold Wave: Minimum Temperature Departure from normal -4.5°C to -6.4°C .

Severe Cold Wave: Minimum Temperature Departure from normal $\leq -6.5^{\circ}\text{C}$

(b) Based on actual Minimum Temperature (for Plains only)

Cold Wave: When Minimum Temperature is $\leq 4.0^{\circ}\text{C}$

Severe Cold Wave: When Minimum Temperature is $\leq 2.0^{\circ}\text{C}$

(c) For Coastal Stations

When Minimum Temperature departure is $\leq -4.5^{\circ}\text{C}$ & actual Minimum Temperature is $\leq 15^{\circ}\text{C}$

Cold Day

When minimum temperature of a station $\leq 10^{\circ}\text{C}$ for plains and $\leq 0^{\circ}\text{C}$ for hilly regions

Based on departure

Cold Day: Maximum Temperature Departure from normal -4.5°C to -6.4°C .

Severe Cold Day: Maximum Temperature Departure from normal $\leq -6.5^{\circ}\text{C}$

Fog

Phenomenon of small droplets suspended in air and the horizontal visibility $< 1\text{km}$

Moderate Fog: When the visibility between 500-200 metres

Dense Fog: when the visibility between 50- 200 metres

Very Dense Fog: when the visibility < 50 metres

Thunderstorm

Sudden electrical discharges manifested by a flash of light (Lightning) and a sharp rumbling sound (thunder)

Dust/Sand Storm

An ensemble of particles of dust or sand energetically lifted to great heights by a strong and turbulent wind.

Frost

Ice deposits on ground

Air temperature $\leq 4^{\circ}\text{C}$ (over Plains)

Squall

A strong wind that rises suddenly, lasts for atleast 1 minute.

Moderate: Wind speed 52-61 kmph

Severe: Wind speed 62-67 kmph

Very Severe: Wind speed > 67 kmph

Sea State

Effect of various waves in the sea over specific area

Rough to very rough: Wind speed 41-62 kmph (22-33 knots) & Wave height 2.5-6 metre

High to very high: Wind speed 63-117 kmph (34-63 knots) & Wave height 6-14 metre

Phenomenal: Wind speed > 117 kmph (> 63 knots) & Wave height > 14 metre

Cyclone

Cyclonic Storm: Wind speed 62-87 kmph (34-47 knots)

Severe Cyclonic Storm: Wind speed 88-117 kmph (48-63 knots)

Very Severe Cyclonic Storm: Wind speed 118-165 kmph (64 - 89 knots)

Extremely Severe Cyclonic Storm: Wind speed 166-220 kmph (90 -119 knots)

Super Cyclone Storm: Wind speed > 220 kmph (> 119 knots)

* Red colour warning does not mean "Red Alert", Red colour warning means "Take Action".

Forecast and Warning for any day is valid from 0830 hours IST of day till 0830 hours IST of next day.

For more details, kindly visit <https://mausam.imd.gov.in> or contact: 011-2434-4599

(Service to the Nation since 1875)

Hot and Humid: When maximum temperatures remain 3°C above normal along with the above normal relative humidity.