



Government of India  
Ministry of Earth Sciences  
India Meteorological Department



Press Release

Date: 09<sup>th</sup> August, 2025

Time of Issue: 1330 hours IST

**Subject:** i) Isolated heavy to very heavy rainfall likely over Uttarakhand and Himachal Pradesh during next 7 days.  
ii) Heavy to very heavy rainfall likely to continue at isolated places over Sub Himalayan West Bengal, Sikkim, Bihar, Assam & Meghalaya and Arunachal Pradesh India during next 7 days;  
iii) Subdued rainfall activities likely over Central India and Rajasthan during next 3-4 days.

**Realised weather during past 24 hours till 0830 hours IST of today, the 09<sup>th</sup> August, 2025:**

- ❖ **Heavy to very heavy rainfall (7-20 cm)** has been recorded at isolated places over Sub-Himalayan West Bengal & Sikkim, East Uttar Pradesh, Punjab, East Madhya Pradesh; **Heavy rainfall (7-11 cm)** at isolated places over West Uttar Pradesh, Himachal Pradesh, Haryana Chandigarh & Delhi, Uttarakhand, Telangana, North Interior Karnataka, Odisha, Vidarbha, South Interior Karnataka, Tamil Nadu, Arunachal Pradesh, Assam & Meghalaya, Rayalaseema.

For more details of realised weather, kindly refer [Annexure I](#).

**i. Weather Systems, Forecast and Warnings (refer to Annexure II & III):**

- ❖ The monsoon trough runs near to its near normal position at mean sea level.
- ❖ An **upper air cyclonic circulation** over west Uttar Pradesh & neighbourhood and another over south Bihar and adjoining north Jharkhand in lower tropospheric levels.
- ❖ A **trough** runs from Gujarat to west Uttar Pradesh in lower tropospheric levels.
- ❖ An **upper air cyclonic circulation** lies over north interior Karnataka in middle tropospheric and another over south coastal Andhra Pradesh in lower tropospheric levels.
- ❖ A low-pressure area is likely to form northwest & adjoining westcentral Bay of Bengal around 13<sup>th</sup> August, 2025.
- ❖ The **Western Disturbance** seen as a cyclonic circulation over Kashmir & neighbourhood in lower tropospheric levels.

Under the influence of these systems, the following weather is likely:

**Northwest India:**

- ❖ Isolated **heavy rainfall** likely over Himachal Pradesh on 09<sup>th</sup>, 10<sup>th</sup> & 15<sup>th</sup>; Uttarakhand during 09<sup>th</sup> & 11<sup>th</sup>; Punjab, Haryana, Chandigarh & Delhi on 09<sup>th</sup> & 10<sup>th</sup>; East Uttar Pradesh on 09<sup>th</sup>, 10<sup>th</sup>, 14<sup>th</sup> & 15<sup>th</sup>; West Uttar Pradesh on 09<sup>th</sup>, 10<sup>th</sup>, 12<sup>th</sup> & 15<sup>th</sup>; East Rajasthan on 09<sup>th</sup> & 15<sup>th</sup> August with **very heavy rainfall** over Jammu-Kashmir during 13<sup>th</sup>-15<sup>th</sup>; Himachal Pradesh during 11<sup>th</sup>-14<sup>th</sup>; Uttarakhand on 10<sup>th</sup> & during 11<sup>th</sup>-14<sup>th</sup>; West Uttar Pradesh on 13<sup>th</sup> & 14<sup>th</sup>; East Uttar Pradesh on 12<sup>th</sup> & 13<sup>th</sup> August.

**Northeast India:**

- ❖ Light/moderate rainfall at many places accompanied with thunderstorm, lightning and isolated **heavy rainfall** likely to continue over Arunachal Pradesh on 09<sup>th</sup>, 10<sup>th</sup> & 13<sup>th</sup>; Assam & Meghalaya during 09<sup>th</sup>-15<sup>th</sup>; Nagaland, Manipur, Mizoram & Tripura on 09<sup>th</sup> & 10<sup>th</sup> and during 12<sup>th</sup>-15<sup>th</sup> August with isolated **very heavy rainfall over Arunachal Pradesh on 11<sup>th</sup> & 12<sup>th</sup> and Assam & Meghalaya on 12<sup>th</sup> August.**
- ❖ Light/moderate rainfall at many places accompanied with thunderstorm & lightning likely over Western Himalayan region and many/some places over the plains during next 7 days.

### South Peninsular India:

- ❖ Isolated **heavy rainfall** likely over Tamil Nadu, Rayalaseema on 09<sup>th</sup>; Karnataka on 14<sup>th</sup> & 15<sup>th</sup>; Coastal Andhra Pradesh & Yanam on 09<sup>th</sup>, 10<sup>th</sup>, 12<sup>th</sup>, 13<sup>th</sup> & 15<sup>th</sup>; Rayalaseema on 09<sup>th</sup> & 15<sup>th</sup>; Telangana during 09<sup>th</sup>-12<sup>th</sup> August with isolated **very heavy rainfall over Coastal Andhra Pradesh & Yanam on 14<sup>th</sup>; Telangana during 13<sup>th</sup>-15<sup>th</sup> August.**
- ❖ Strong surface winds (speed reaching 40-50 kmph) very likely over South Peninsular India during next 2 days.
- ❖ Light to moderate rainfall at most/many places accompanied with thunderstorm & lightning likely over Tamil Nadu, Karnataka, Rayalaseema, Coastal Andhra Pradesh & Yanam and Telangana during next 5 days.

### East & Central India:

- ❖ Isolated **heavy rainfall** likely over West Madhya Pradesh on 09<sup>th</sup>, 10<sup>th</sup> & 14<sup>th</sup>; East Madhya Pradesh during 11<sup>th</sup>-13<sup>th</sup>; Vidarbha on 12<sup>th</sup> & 13<sup>th</sup>; Chhattisgarh on 11<sup>th</sup> & 12<sup>th</sup>; Andaman & Nicobar Islands on 11<sup>th</sup> & 12<sup>th</sup>; Sub-Himalayan West Bengal & Sikkim on 10<sup>th</sup> & during 13<sup>th</sup>-15<sup>th</sup>; Gangetic West Bengal on 13<sup>th</sup> & 14<sup>th</sup>; Bihar during 09<sup>th</sup>-13<sup>th</sup>; Jharkhand on 13<sup>th</sup>; Odisha on 09<sup>th</sup>, 14<sup>th</sup> & 15<sup>th</sup> August **with isolated very heavy rainfall over Sub-Himalayan West Bengal & Sikkim on 11<sup>th</sup> & 12<sup>th</sup>; Odisha on 12<sup>th</sup> & 13<sup>th</sup> August.**
- ❖ Light to moderate rainfall at most/many places accompanied with thunderstorm & lightning likely over the region during next 5 days.

### West India:

- ❖ Isolated **heavy rainfall** likely over Madhya Maharashtra on 09<sup>th</sup>, 14<sup>th</sup> & 15<sup>th</sup>; Konkan & Goa during 13<sup>th</sup>-15<sup>th</sup> August.
- ❖ Light to moderate rainfall at many/some places very likely over the region during next 5-6 days.

### Fishermen warning:

**Fishermen are advised to avoid venturing into the following from 09<sup>th</sup> August to 14<sup>th</sup> August 2025 to the following Areas:**

**Arabian Sea:** Some parts of southwest & westcentral Arabian Sea during 09<sup>th</sup> to 12<sup>th</sup> August, over Lakshadweep, Maldives, Comorin areas during 09<sup>th</sup> to 11<sup>th</sup> August, most parts of westcentral Arabian Sea & adjoining, some parts of eastcentral Arabian Sea, southern parts of north Arabian Sea during 12<sup>th</sup> to 14<sup>th</sup> August, along and off north Gujarat coast, adjoining northeast Arabian Sea during 12<sup>th</sup> to 14<sup>th</sup> August. Along and off south Kerala, off north Kerala coast for 09<sup>th</sup> August, Along and off the Somalia coast and adjoining sea areas during 09<sup>th</sup> to 14<sup>th</sup> August, along and off. Oman coast during 09<sup>th</sup> to 14<sup>th</sup> of August, along and off Yemen coast during 10<sup>th</sup> to 14<sup>th</sup> August.

#### **Bay of Bengal:**

Along and off Sri Lanka coast during 09<sup>th</sup> to 14<sup>th</sup> August, over some parts of southwest Bay of Bengal for 09<sup>th</sup> August & over entire southwest Bay of Bengal during 10<sup>th</sup> to 14<sup>th</sup> August, parts of southeast and westcentral Bay of Bengal adjoining to southwest Bay of Bengal during 12<sup>th</sup> to 14<sup>th</sup> August, along and off north Andhra Pradesh, south Odisha coasts during 12<sup>th</sup> to 14<sup>th</sup> August.

### ii. Weather conditions and forecast over Delhi/NCR during 09<sup>th</sup> to 12<sup>th</sup> August, 2025 (Annexure IV)

**For more details, kindly refer National Weather Bulletin:**

[https://mausam.imd.gov.in/responsive/all\\_india\\_forecast\\_bulletin.php](https://mausam.imd.gov.in/responsive/all_india_forecast_bulletin.php)

**For District wise warnings refer:** <https://mausam.imd.gov.in/responsive/districtWiseWarningGIS.php>

**For Fishermen warning refer** <https://rsmcnewdelhi.imd.gov.in/fishermen-warning.php>

**Rainfall recorded (in cm) during past 24 hours till 0830 hours IST of today, the 09<sup>th</sup> August:**

- ❖ **East Uttar Pradesh:** Fatehpur Tehsil (dist Barabanki) 18, Prayagraj Sadar (dist Prayagraj) 7, Karchhana (dist Prayagraj) 7, Kakrahi (dist Siddharth Nagar) 7, Ramnagar (dist Barabanki) 6, Biswan (dist Sitapur) 6, Nawabganj Tehsil (dist Barabanki) 5, Nighasan (dist Kheri) 5, Varanasi/bab Aero (dist Varanasi) 5, Malihabad (dist Lucknow) 5, Muhammadi (dist Kheri) 5, Beberu (dist Banda) 4, Mehmudabad (dist Sitapur) 4, Dhanghata (dist Sant Kabir Nagar) 4, Bindki (dist Fatehpur) 4, Rajapur (dist Chitrakoot) 4, Koraon (dist Prayagraj) 4, Sidhauli (dist Sitapur) 3,
- ❖ **Sub Himalayan West Bengal & Sikkim:** Ghatia T.e. (dist Jalpaiguri) 14; Jhallong (dist Kalimpong) 12; Buxaduar (dist Alipurduar), Kailashpur Tea Estate (dist Jalpaiguri) 11 Each; Namthang (dist Namchi), Toorsa Tea Garden (dist Alipurduar) 10 Each;
- ❖ **Punjab:** Ganguwal (dist Rupnagar) 12, Bharatgarh (dist Rupnagar) 5,
- ❖ **East Madhya Pradesh:** Churhat (dist Sidhi) 13, Barhi (dist Katni) 9, Huzur (dist Rewa) 8, Majhgaon (dist Satna) 8, Raipurkarchuliyan (dist Rewa) 7, Gudh (dist Rewa) 7,
- ❖ **West Uttar Pradesh:** Auraiya (cwc) (dist Auraiya) 11, Dhampur (dist Bijnor) 8, Etah (dist Etah) 7, Govardhan (dist Mathura) 6, Jalesar (dist Etah) 6, Nagina (dist Bijnor) 6, Karhal (dist Mainpuri) 5, Sasani (dist Hathras) 5, Hathras (dist Hathras) 5, Atrauli (dist Aligarh) 5, Tundla (dist Firozabad) 4, Shikohabad (dist Firozabad) 4, Etawah Obsy (dist Etawah) 4, Aliganj (dist Etah) 4, Hamirpur Obsy (dist Hamirpur) 4, Sikandra Rao (dist Hathras) 4, Sahawar (dist Kasganj) 4, Mant (dist Mathura) 4, Aligarh (dist Aligarh) 3, Ghioror (dist Mainpuri) 3,
- ❖ **Himachal Pradesh:** Naina Davi (dist Bilaspur) 11, Pandoh (dist Mandi) 10, Pachhad (dist Sirmaur) 7, R L Bbmb (dist Bilaspur) 7, Narkanda Aws (dist Shimla) 7, Kasauli (dist Solan) 7, Hmo Shillaro (dist Shimla) 6, Rajgarh (dist Sirmaur) 6, Kufri Aws (dist Shimla) 5,
- ❖ **HAR. CHD & DELHI:** Pragati Maidan (dist New Delhi) 10, Lodi Road (dist South East Delhi) 8, Safdarjung (dist South East Delhi) 8, Delhi Ridge (dist Central Delhi) 7, Pusa Aws (dist West Delhi) 7, Green Field Ps (dist North East Delhi) 5,
- ❖ **Tamil Nadu:** Mannargudi (dist Thiruvavur) 11, Kattumayilur (dist Cuddalore) 10, Vepur (dist Cuddalore), Neyveli AWS (dist Cuddalore), Me Mathur (dist Cuddalore) 9 each, Veppanthattai (dist Perambalur) 8, Mettupatti (dist Madurai), Pambar Dam (dist Krishnagiri), Palacode ARG (dist Dharmapuri), Kuppanatham (dist Cuddalore) 7 each,
- ❖ **Arunachal Pradesh:** Pasighat\_ Aero (dist East Siang) 11, Anini\_aws (dist Dibang Valley) 8, Roing (dist Lower Dibang Valley) 7,
- ❖ **Uttarakhand:** Rudraprayag (dist Rudraprayag) 11, Uttar Kashi (dist Uttarkashi) 6, Uttar Kashi (cwc) (dist Uttarkashi) 5, Mussoorie (dist Dehradun) 5, Mori (dist Uttarkashi) 5,
- ❖ **Telangana:** Gopalpet (dist Wanaparthy) 10, Pebbair (dist Wanaparthy) 9, Makthal (dist Narayanpet) 9, Maganoor (dist Narayanpet) 9, Utkoor (dist Narayanpet) 8, Itikyal (dist Jogulamba Gadwal) 7, Veepangandla (dist Wanaparthy) 7, Aiza (dist Jogulamba Gadwal) 7,
- ❖ **North Interior Karnataka:** Nargund (dist Gadag) 10, Kuknoor (dist Koppal) 9, Vijayapura Pto (dist Vijayapura) 7, Hunsagi (dist Yadgir) 7,
- ❖ **Odisha:** Chilika (Khurda) 9, Balikuda (Jagatsinghpur) 6, Jajpur (Jajpur) 5, Banpur (Khurda) 5, Korei (Jajpur) 5, Mahanga (Cuttack) 4, Puri (Puri) 3, Nimpura (Puri) 3, Banaigarh (Sundargarh) 3,
- ❖ **Assam & Meghalaya:** Golaghat\_ Aws (dist Golaghat) 9, Mawsynram (dist East Khasi Hills) 8, Cherrapunji (dist East Khasi Hills) 8, Cherrapunji(rkm) (dist East Khasi Hills) 6,
- ❖ **Vidarbha:** Karanjlad (dist Washim) 7, Pusad (dist Yeotmal) 6,
- ❖ **South Interior Karnataka:** Kolar Pwd (dist Kolar) 7,
- ❖ **Rayalaseema:** Atmakur (dist Anantapuramu) 7, Gudur (dist Kurnool) 7, Amarapuram (dist Sri Sathyasai District) 7, Settur (dist Anantapuramu) 7,

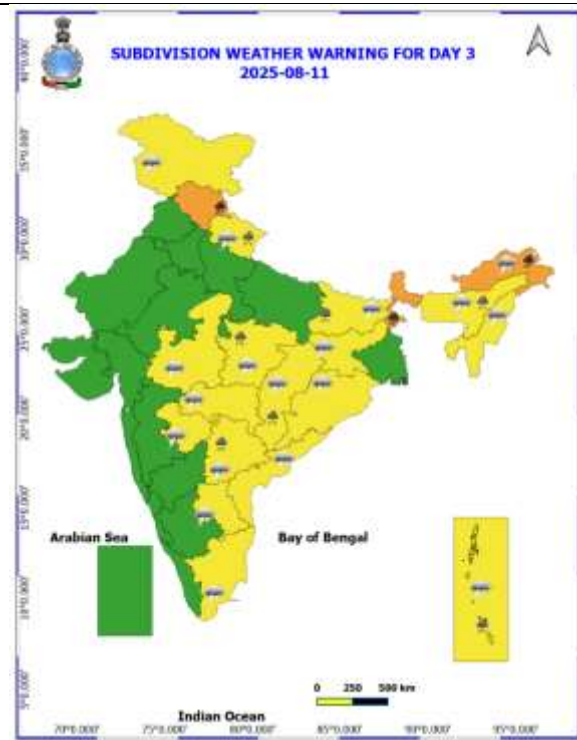
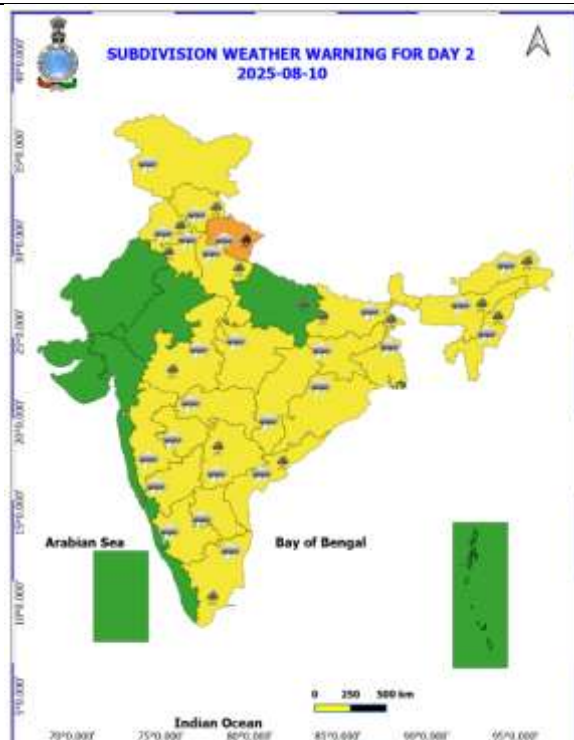
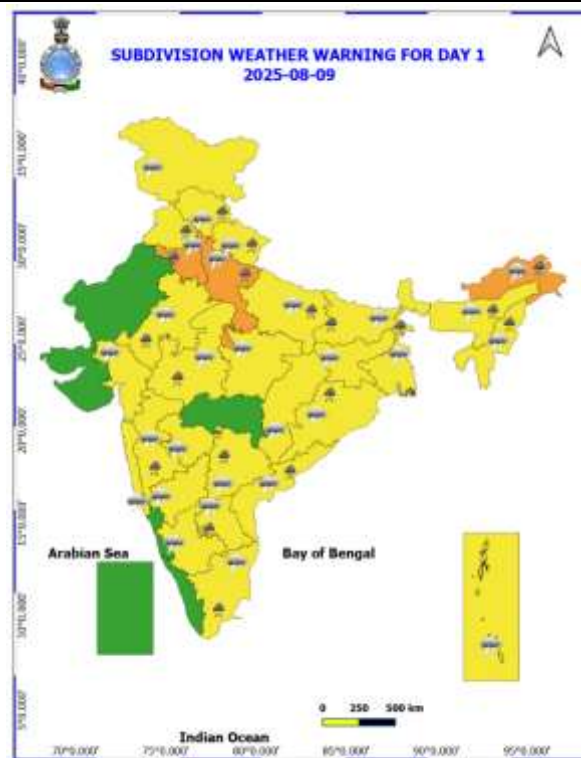
## ANNEXURE II

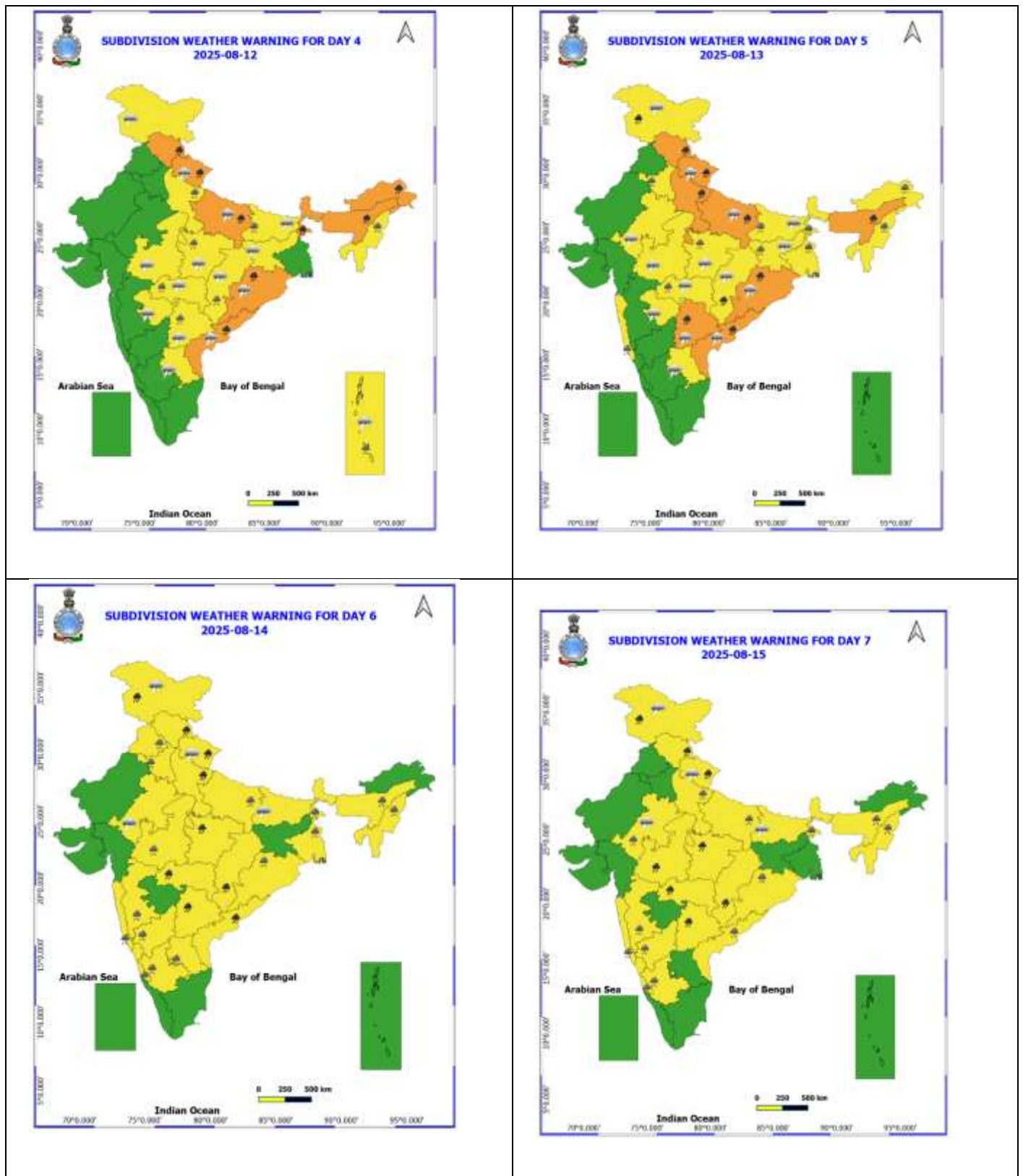
Table-1								
7 Days Rainfall Forecast								
S.No.	Subdivision	9- Aug	10- Aug	11- Aug	12- Aug	13- Aug	14- Aug	15- Aug
		Day 1	Day 2	Day 3	Day 4	Day 5	Day 6	Day 7
1	ANDAMAN & NICOBAR ISLANDS	SCT	FWS	WS	WS	WS	WS	WS
2	ARUNACHAL PRADESH	FWS	FWS	WS	WS	FWS	SCT	SCT
3	ASSAM & MEHGHALAYA	WS	FWS	FWS	WS	WS	FWS	FWS
4	NAGALAND, MANIPUR, MIZORAM AND TRIPURA	FWS	FWS	FWS	WS	WS	FWS	FWS
5	SUB HIMALAYAN WEST BENGAL & SIKKIM	WS	WS	WS	WS	FWS	FWS	FWS
6	GANGETIC WEST BENGAL	FWS	SCT	SCT	FWS	FWS	FWS	FWS
7	ODISHA	SCT	SCT	SCT	FWS	FWS	FWS	FWS
8	JHARKHAND	FWS	FWS	FWS	SCT	SCT	FWS	FWS
9	BIHAR	FWS	SCT	SCT	FWS	FWS	SCT	SCT
10	EAST UTTAR PRADESH	FWS	SCT	FWS	WS	WS	FWS	FWS
11	WEST UTTAR PRADESH	FWS	SCT	FWS	FWS	WS	WS	FWS
12	UTTARAKHAND	WS	WS	WS	WS	WS	WS	WS
13	HARYANA, CHANDIGARH & DELHI	SCT	SCT	SCT	ISOL	SCT	FWS	FWS
14	PUNJAB	ISOL	SCT	SCT	ISOL	SCT	FWS	FWS
15	HIMACHAL PRADESH	FWS	WS	WS	WS	WS	WS	WS
16	JAMMU AND KASHMIR AND LADAKH	SCT	SCT	SCT	FWS	WS	WS	WS
17	WEST RAJASTHAN	DRY	DRY	ISOL	ISOL	ISOL	ISOL	ISOL
18	EAST RAJASTHAN	ISOL	ISOL	ISOL	ISOL	SCT	SCT	SCT
19	WEST MADHYA PRADESH	SCT	SCT	SCT	FWS	FWS	WS	WS
20	EAST MADHYA PRADESH	FWS	FWS	FWS	FWS	WS	WS	WS
21	GUJRAT REGION	SCT	SCT	SCT	SCT	SCT	SCT	SCT
22	SAURASHTRA & KUTCH	SCT	SCT	SCT	SCT	SCT	SCT	SCT
23	KONKAN & GOA	WS	WS	WS	WS	WS	WS	WS
24	MADHYA MAHARASHTRA	FWS	SCT	SCT	SCT	SCT	FWS	FWS
25	MARATHWADA	FWS	SCT	SCT	SCT	SCT	SCT	SCT
26	VIDARBHA	FWS	WS	WS	WS	WS	WS	WS
27	CHHATTISGARH	FWS	FWS	FWS	WS	WS	WS	WS
28	COASTAL ANDHRA PRADESH	SCT	SCT	SCT	SCT	FWS	FWS	FWS
29	TELANGANA	WS	WS	WS	WS	WS	WS	WS
30	RAYALASEEMA	FWS	FWS	SCT	SCT	FWS	FWS	SCT
31	TAMILNADU & PUDUCHERRY	SCT	ISOL	ISOL	ISOL	ISOL	ISOL	ISOL
32	COSTAL KARNATAKA	WS	WS	WS	WS	WS	WS	WS
33	NORTH INTERIOR KARNATAKA	WS	WS	FWS	FWS	FWS	FWS	WS
34	SOUTH INTERIOR KARNATAKA	WS	WS	FWS	FWS	FWS	FWS	WS
35	KERALA AND MAHE	FWS	FWS	FWS	FWS	WS	WS	WS
36	LAKSHADWEEP	FWS	FWS	FWS	WS	WS	FWS	FWS

- As the lead period increases forecast accuracy decrease.



### ANNEXURE III





- Action may be taken based on ORANGE AND REDCOLOUR warnings.
- Vulnerable regions likely urban and hilly areas action may be initiated for heavy rainfall warning.
- As the lead period increases forecast accuracy decreases.

Detailed districtwise Multi Hazard weather warning for next five days available at <https://mausam.imd.gov.in/responsive/districtWiseWarningGIS.php>

**Weather forecast over Delhi/NCR during 09<sup>th</sup>August to 12<sup>th</sup>August 2025****Past Weather:**

There has been significant change in minimum and maximum temperatures in past 24 hours over Delhi. The minimum temperatures are in the range of 23-27°C and maximum temperatures were in the range of 34-36°C. The minimum temperatures are below normal upto 02-03°C and maximum temperatures were above normal upto 1-2°C over Delhi. North-easterly winds prevailed with wind speed upto 18 kmph Gusting 36 kmph in past 24 hours over Delhi. Maximum rainfall of 80.7 mm has been recorded at Lodhi Road during past 24 hrs over Delhi. Light rain at most places with moderate rain at a few places accompanied with thundershowers with a wind speed of upto 10-15 kmph from the southwest direction prevailed over the region in the forenoon today.

**Weather Forecast:**

**09.08.2025:** Generally cloudy sky. A few spells of light to moderate rain/thundershower with possibility of moderate to heavy spell at isolated places. Possibility of another few spells of light to moderate rain/thundershower during early hours to morning hours. The maximum temperatures over Delhi are likely to be in the range of 30 to 32°C. The maximum temperature will be below normal up to 1 to 2°C. The predominant surface wind will likely be from the southeast direction with a wind speed of upto 10-15 kmph during the afternoon hours. The wind speed will remain same upto 10-15 kmph from the southeast direction during the evening and night.

**10.08.2025:** Partly cloudy sky. Possibility of very light to light rain/ thundershowers. The maximum and minimum temperatures over Delhi are likely to be in the range of 33 to 35°C and 23 to 25°C respectively. The maximum temperature will be near normal and minimum temperature will be below normal upto 1 to 2 °C. The predominant surface wind will likely to be from the southeast direction with a wind speed of upto 10-15 kmph during morning hours. The predominant surface wind will likely to be from the southeast direction with a wind speed of 10-15 kmph during afternoon hours. The wind speed will remain same upto 10-15 kmph from the southeast direction during evening and night.

**11.08.2025:** Partly cloudy sky. Possibility of very light to light rain/thundershowers. The maximum and minimum temperatures over Delhi are likely to be in the range of 33 to 35°C and 24 to 26°C respectively. The minimum temperature will be near normal and the minimum temperature will be below normal upto 1 to 2°C. The predominant surface wind will likely to be from the northwest direction with a wind speed of upto 10-15 kmph during morning hours. The predominant surface wind will likely to be from the southeast direction with a wind speed of 10-15 kmph during afternoon hours. The wind speed will remain same with windspeed upto 10-15 kmph from evening to night.

**12.08.2025:** Partly cloudy sky. Possibility of very light to light rain/thundershowers. The maximum and minimum temperatures over Delhi are likely to be in the range of 31 to 33°C and 24 to 26°C respectively. The minimum temperature will be below normal up to 1 to 2°C and the maximum temperature will be below normal upto 1 to 2°C. The predominant surface wind will likely to be from the west direction with a wind speed of 15-20 kmph during morning hours. The wind speed will be upto 10-15 kmph from southwest direction in the afternoon. The wind speed will be up to 10-15 kmph from west direction in evening and night.

### **Impact & Action Suggested due to**

- ❖ **Very heavy rainfall** over Jammu-Kashmir during 13<sup>th</sup>-15<sup>th</sup>; Himachal Pradesh during 11<sup>th</sup>-14<sup>th</sup>; Uttarakhand on 10<sup>th</sup> & during 11<sup>th</sup>-14<sup>th</sup>; West Uttar Pradesh on 13<sup>th</sup> & 14<sup>th</sup>; East Uttar Pradesh on 12<sup>th</sup> & 13<sup>th</sup>; Arunachal Pradesh on 11<sup>th</sup> & 12<sup>th</sup> and Assam & Meghalaya on 12<sup>th</sup>; Coastal Andhra Pradesh & Yanam on 14<sup>th</sup>; Telangana during 13<sup>th</sup>-15<sup>th</sup>; over Sub-Himalayan West Bengal & Sikkim on 11<sup>th</sup> & 12<sup>th</sup>; Odisha on 12<sup>th</sup> & 13<sup>th</sup> August.

### **Impact Expected**

- Localized Flooding of roads, water logging in low lying areas and closure of underpasses mainly in urban areas of the above region.
- Occasional reduction in visibility due to heavy rainfall.
- Disruption of traffic in major cities due to water logging in roads leading to increased travel time.
- Minor damage to kutchha roads.
- Possibilities of damage to vulnerable structure.
- Localized Landslides/Mudslides/landslips/mudslips/landsinks/mudsinks.
- Damage to horticulture and standing crops in some areas due to inundation.
- It may lead to riverine flooding in some river catchments (for riverine flooding please visit Web page of CWC)

### **Action Suggested**

- Check for traffic congestion on your route before leaving for your destination.
- Follow any traffic advisories that are issued in this regard.
- Avoid going to areas that face the water logging problems often.
- Avoid staying in vulnerable structure.

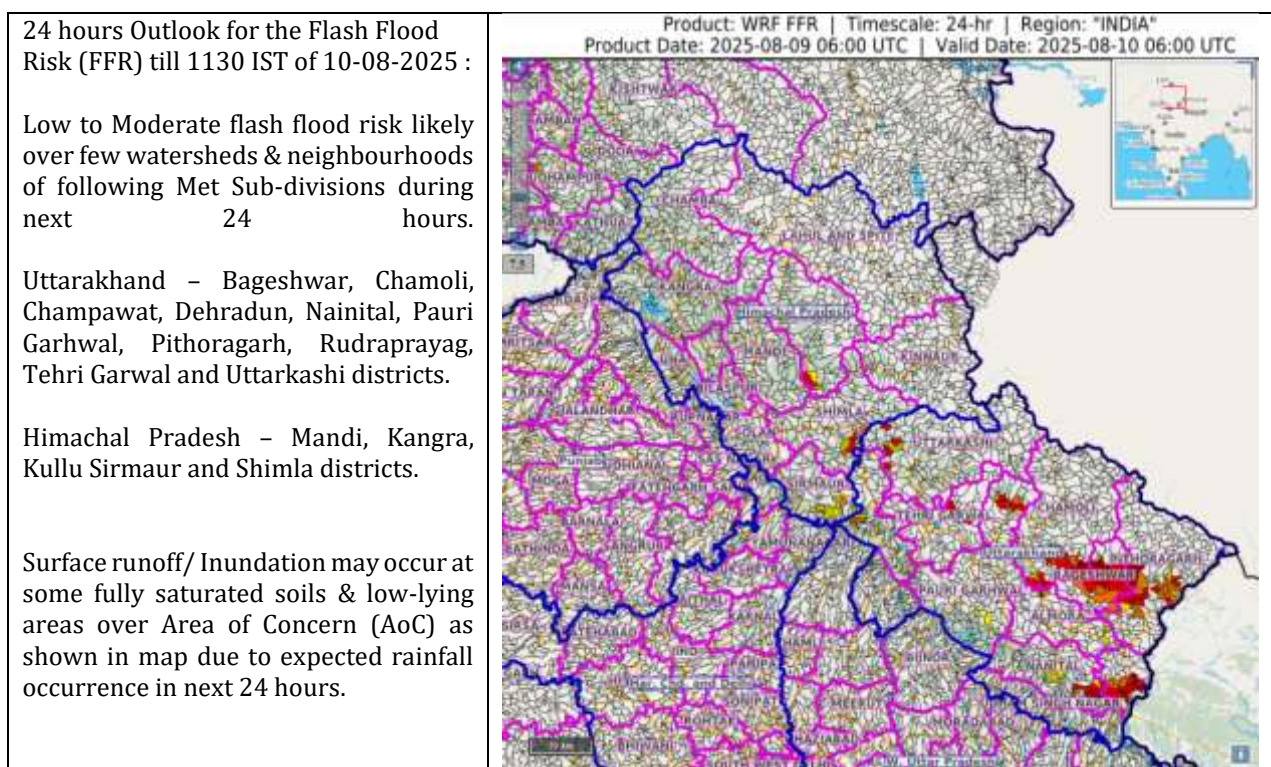
### **Agromet advisories for likely impact of Heavy / Heavy to Very Heavy / Extremely Heavy Rainfall**

- In Uttarakhand, make necessary arrangements to drain out excess water from the fields of already sown / transplanted rice, sugarcane, maize, black gram, green gram, groundnut, pigeon pea, finger millet, soybean and vegetables in Bhabar and Tarai Zone; and barnyard millet, finger millet, green gram and black gram in Sub Humid Sub Tropic Zone. In Hill Zone, strengthen the bunds to prevent surface runoff of water. Postpone sowing of vegetable pea till soil attains optimum moisture level. Maintain proper drainage channels in vegetable and crop fields. Undertake harvesting of matured capsicum fruits. Postpone sowing of vegetable pea in case of excessive wet soil conditions.
- In Himachal Pradesh, provide proper drainage channels in maize, ginger, turmeric and vegetable fields in Mid Hills Sub Humid Zone; and rice, maize and vegetable fields in Sub Montane and Low Hills Sub Tropical Zone. In High Hills Sub Temperate Wet Zone, undertake harvesting of ripened tomato and cover the cauliflower nursery with plastic sheets to prevent damage from heavy rainfall.
- In Uttar Pradesh, make necessary arrangements for drainage of excess water to avoid waterlogging from the fields of rice, maize, groundnut, sesame, black gram, green gram and vegetables in Central Plain Zone; paddy, pigeon pea, rapeseed, plantation and vegetable crops in Bundelkhand Zone; maize, pulses (blackgram, green gram etc.) and oilseed (sesame, groundnut etc.) crops in Western Plain Zone; all pulses, vegetables and other crops in South Western Semi Arid Zone; and paddy, maize, pigeon pea, black gram, millets in North Eastern Plain Zone.
- In Bihar, make provisions to drain out excess water from standing crops such as maize, nurseries of onion, chilli, and cauliflower in North West Alluvial Plain Zone; maize, finger millet, ragi, kodo, sava, china etc. in North East Alluvial Zone.
- In Sub-Himalayan West Bengal, make provision to drain out excess water from rice, ginger, vegetable fields and fruit orchards in Hill Zone and aman paddy and vegetable fields in Terai Zone. Cover the chilli seedlings with plastic to protect them from heavy rains in Terai Zone.



- In Arunachal Pradesh, ensure proper drainage in rice, maize, finger millet, soybean, vegetables, and fruit orchards to avoid waterlogging. Provide strong support to fruit-bearing plants to prevent them from bending or breaking during heavy rains.
- In Assam, to prevent waterlogging, ensure proper drainage in Sali rice, green gram and pigeon pea fields and banana orchards in Lower Brahmaputra Valley Zone; Sali rice and sugarcane fields in North Bank Plain Zone and Sali rice fields in Upper Brahmaputra Valley Zone
- In Tamil Nadu, ensure proper drainage in sorghum fields to prevent waterlogging, especially in heavy soils and low-lying areas. Ensure proper drainage around the coconut plants to avoid root rot.
- 
- Livestock / Fishery
- Keep the animals inside the shed during heavy rainfall and provide them balanced feed.
- Store feed and fodder in a safe place to prevent spoilage.
- Construct an outlet with proper netting around the ponds to drain out excess water, thereby preventing fish from escaping in case of overflow.
- 
- Agromet advisories for likely impact of Thunderstorm / Gusty Winds / Squally Winds
- (Based on the IBF and advisories issued by different AMFUs)
- Provide mechanical support to horticultural crops and staking or support to vegetables and young fruit plants / fruit-bearing plants to avoid lodging due to strong winds.

### Flash flood guidance:



### Legends & abbreviations:

- ❖ **Heavy Rain:** 64.5-115.5mm; **Very Heavy Rain:** 115.6-204.4mm; **Extremely Heavy Rain:** >204.4mm.
- ❖ **Obsy:** Observatory; **Automatic Weather Station;** **ARG:** Automatic Rain Gauge; **dist:** District; **NH:** National Highway; **KVK:** Krishi Vigyan Kendra; **DVC:** Damodar Valley Corporation; **PTO:** Part Time Office, **Aero:** Aerodrome, **IAF:** Indian Air Force.
- ❖ **Region wise classification of meteorological Sub-Divisions:**

- **Northwest India:** Western Himalayan Region (Jammu-Kashmir-Ladakh-Gilgit-Baltistan-Muzaffarabad, Himachal Pradesh and Uttarakhand); Punjab, Haryana-Chandigarh-Delhi; West Uttar Pradesh, East Uttar Pradesh, West Rajasthan and East Rajasthan.
- **Central India:** West Madhya Pradesh, East Madhya Pradesh, Vidarbha and Chhattisgarh.
- **East India:** Bihar, Jharkhand, Sub-Himalayan West Bengal & Sikkim; Gangetic West Bengal, Odisha and Andaman & Nicobar Islands.
- **Northeast India:** Arunachal Pradesh, Assam & Meghalaya and Nagaland, Manipur, Mizoram & Tripura.
- **West India:** Gujarat Region, Saurashtra & Kutch, Konkan & Goa, Madhya Maharashtra and Marathawada.
- **South India:** Coastal Andhra Pradesh & Yanam, Telangana, Rayalaseema, Coastal Karnataka, North Interior Karnataka, South Interior Karnataka, Kerala & Mahe, Tamil Nadu, Puducherry & Karaikal and Lakshadweep.

## LEGENDS

1. अंडमान और निकोबार द्वीपसमूह

2. अरुणाचल प्रदेश

3. असम और मेघालय

4. नागालैंड, मणिपुर, मिजोरम और त्रिपुरा

5. उप-हिमालयी पश्चिम बंगाल और सिक्किम

6. गंगीय पश्चिम बंगाल

7. ओडिशा

8. झारखंड

9. बिहार

10. पूर्वी उत्तर प्रदेश

11. पश्चिम उत्तर प्रदेश

12. उत्तराखंड

13. हरियाणा, चंडीगढ़ और दिल्ली

14. पंजाब

15. हिमाचल प्रदेश

16. जम्मू और कश्मीर और लद्दाख

17. पश्चिम राजस्थान

18. पूर्वी राजस्थान

19. पश्चिम मध्य प्रदेश

20. पूर्वी मध्य प्रदेश

21. गुजरात

22. सौराष्ट्र

23. कोंकण और गोवा

24. मध्य महाराष्ट्र

25. मराठवाड़ा

26. विदर्भ

27. छत्तीसगढ़

28. तटीय आंध्र प्रदेश और यनम

29. तेलंगाना

30. रायलसीमा

31. तमिलनाडु, पुडुचेरी और कराईकल

32. तटीय कर्नाटक

33. आंतरिक उत्तरी कर्नाटक

34. आंतरिक दक्षिणी कर्नाटक

35. केरल और माहे

36. लक्षद्वीप



1. Andaman & Nicobar Islands

2. Arunachal Pradesh

3. Assam & Meghalaya

4. Nagaland, Manipur, Mizoram & Tripura

5. Sub-Himalayan West Bengal & Sikkim

6. Gangetic West Bengal

7. Odisha

8. Jharkhand

9. Bihar

10. East Uttar Pradesh

11. West Uttar Pradesh

12. Uttarakhand

13. Haryana, Chandigarh & Delhi

14. Punjab

15. Himachal Pradesh

16. Jammu & Kashmir and Ladakh

17. West Rajasthan

18. East Rajasthan

19. West Madhya Pradesh

20. East Madhya Pradesh

21. Gujarat

22. Saurashtra

23. Konkan & Goa

24. Madhya Maharashtra

25. Marathwada

26. Vidarbha

27. Chhattisgarh

28. Coastal Andhra Pradesh & Yanam

29. Telangana

30. Rayalaseema

31. Tamilnadu, Puducherry & Karaikal

32. Coastal Karnataka

33. North Interior Karnataka

34. South Interior Karnataka

35. Kerala & Mahe

36. Lakshadweep

## SPATIAL DISTRIBUTION (% of Stations reporting)

% Stations	Category	% Stations	Category
76-100	Widespread (WS/Most Places)	26-50	Scattered (SCT/A Few Places)
51-75	Fairly Widespread (FWS/Many Places)	1-25	Isolated (ISOL)



Fog



Heavy Rain



Very Heavy Rain



Extremely Heavy Rain



Thunder & Lightning



Hailstorm



Dust Raising Winds



Heavy Snow



Dust Storm



Heat Wave



Warm Night



Hot Day



Hot & Humid



Strong Surface Winds



Cold Wave



Cold Day



Ground Frost

### COLOUR CODED WARNING

No Warning (No Action)

Watch (Be Aware)

Alert (Be Prepared To Take Action)

Warning (Take Action)

### Probabilistic Forecast

Terms	Probability of Occurrence (%)
Unlikely	< 25
Likely	25 - 50
Very Likely	50 - 75
Most Likely	> 75

\* Red colour warning does not mean "Red Alert", Red colour warning means "Take Action".

Forecast and Warning for any day is valid from 0830 hours IST of day till 0830 hours IST of next day.

For more details, kindly visit <https://mausam.imd.gov.in> or contact: 011-2434-4599

(Service to the Nation since 1875)



## DEFINITION/CRITERIA

### Rain/ Snow \*

Heavy: 64.5 to 115.5 mm/cm \*  
Very Heavy: 115.6 to 204.4 mm/cm \*  
Extremely Heavy: > 204.4 mm/cm \*

### Heat Wave

When maximum temperature of a station reaches  $\geq 40^{\circ}\text{C}$  for plains and  $\geq 30^{\circ}\text{C}$  for hilly regions

(a) Based on Departure from normal

Heat Wave: Maximum Temperature Departure from normal  $4.5^{\circ}\text{C}$  to  $6.4^{\circ}\text{C}$ .

Severe Heat Wave: Maximum Temperature Departure from normal  $\geq 6.5^{\circ}\text{C}$

(b). Based on Actual maximum temperature

Heat Wave: When actual maximum temperature  $\geq 45^{\circ}\text{C}$ .

Severe Heat Wave: When actual maximum temperature  $\geq 47^{\circ}\text{C}$ .

(c). Criteria for heat wave for coastal stations

When maximum temperature departure is  $> 4.5^{\circ}\text{C}$  from normal. Heat Wave may be described provided maximum temperature  $\geq 37^{\circ}\text{C}$ .

### Warm Night

When maximum temperature remains  $40^{\circ}\text{C}$

Warm Night: When minimum temperature departure  $4.5^{\circ}\text{C}$  to  $6.4^{\circ}\text{C}$ .

Severe Warm Night: When minimum temperature departure  $> 6.4^{\circ}\text{C}$ .

### Cold Wave

When minimum temperature of a station  $\leq 10^{\circ}\text{C}$  for plains and  $\leq 0^{\circ}\text{C}$  for hilly regions.

(a). Based on departure

Cold Wave: Minimum Temperature Departure from normal  $-4.5^{\circ}\text{C}$  to  $-6.4^{\circ}\text{C}$ .

Severe Cold Wave: Minimum Temperature Departure from normal  $\leq -6.5^{\circ}\text{C}$

(b) Based on actual Minimum Temperature (for Plains only)

Cold Wave: When Minimum Temperature is  $\leq 4.0^{\circ}\text{C}$

Severe Cold Wave: When Minimum Temperature is  $\leq 2.0^{\circ}\text{C}$

(c) For Coastal Stations

When Minimum Temperature departure is  $\leq -4.5^{\circ}\text{C}$  & actual Minimum Temperature is  $\leq 15^{\circ}\text{C}$

### Cold Day

When minimum temperature of a station  $\leq 10^{\circ}\text{C}$  for plains and  $\leq 0^{\circ}\text{C}$  for hilly regions

Based on departure

Cold Day: Maximum Temperature Departure from normal  $-4.5^{\circ}\text{C}$  to  $-6.4^{\circ}\text{C}$ .

Severe Cold Day: Maximum Temperature Departure from normal  $\leq -6.5^{\circ}\text{C}$

### Fog

Phenomenon of small droplets suspended in air and the horizontal visibility  $< 1\text{km}$

Moderate Fog: When the visibility between 500-200 metres

Dense Fog: when the visibility between 50- 200 metres

Very Dense Fog: when the visibility  $< 50$  metres

### Thunderstorm

Sudden electrical discharges manifested by a flash of light (Lightning) and a sharp rumbling sound (thunder)

### Dust/Sand Storm

An ensemble of particles of dust or sand energetically lifted to great heights by a strong and turbulent wind.

### Frost

Ice deposits on ground

Air temperature  $\leq 4^{\circ}\text{C}$  ( over Plains)

### Squall

A strong wind that rises suddenly, lasts for atleast 1 minute.

Moderate: Wind speed 52-61 kmph

Severe: Wind speed 62-67 kmph

Very Severe: Wind speed  $> 67$  kmph

### Sea State

Effect of various waves in the sea over specific area

Rough to very rough: Wind speed 41-62 kmph (22-33 knots) & Wave height 2.5-6 metre

High to very high: Wind speed 63-117 kmph ( 34-63 knots) & Wave height 6-14 metre

Phenomenal: Wind speed  $> 117$  kmph ( $> 63$  knots) & Wave height  $> 14$  metre

### Cyclone

Cyclonic Storm: Wind speed 62-87 kmph (34-47 knots)

Severe Cyclonic Storm: Wind speed 88-117 kmph (48-63 knots)

Very Severe Cyclonic Storm: Wind speed 118-165 kmph (64 - 89 knots)

Extremely Severe Cyclonic Storm: Wind speed 166-220 kmph (90 -119 knots)

Super Cyclone Storm: Wind speed  $> 220$  kmph ( $> 119$  knots)

\* Red colour warning does not mean "Red Alert", Red colour warning means "Take Action".

Forecast and Warning for any day is valid from 0830 hours IST of day till 0830 hours IST of next day.

For more details, kindly visit <https://mausam.imd.gov.in> or contact: 011-2434-4599

(Service to the Nation since 1875)

**Hot and Humid:** When maximum temperatures remain  $3^{\circ}\text{C}$  above normal along with the above normal relative humidity.