



Government of India
Ministry of Earth Sciences
India Meteorological Department



Press Release

Date: 10th August, 2025

Time of Issue: 1345 hours IST

Subject: i) Isolated heavy to very heavy rainfall likely over Uttarakhand and Himachal Pradesh during next 7 days with isolated extremely heavy (≥ 21 cm) over Uttarakhand on 13th August, 2025

ii) Increase in rainfall activity over east central India and adjoining north peninsular India from 12th of August; with a fresh spell of heavy to very heavy rainfall over Madhya Pradesh, Vidarbha, Odisha, Chhattisgarh, Coastal Andhra Pradesh, and Telangana during 12th to 16th August, 2025.

Realised weather during past 24 hours till 0830 hours IST of today, the 10th August, 2025:

- ❖ **Heavy to very heavy rainfall (7-20 cm)** has been recorded at isolated places over Assam & Meghalaya, Bihar, West Uttar Pradesh, Haryana-Chandigarh-Delhi, East Madhya Pradesh and South Interior Karnataka; **Heavy rainfall (7-11 cm)** at isolated places over Nagaland, Manipur, Mizoram & Tripura, Sub Himalayan West Bengal & Sikkim, Punjab, Himachal Pradesh, Gujarat Region, Coastal Andhra Pradesh & Yanam, Telangana, Rayalaseema, Tamil Nadu, Puducherry & Karaikal and North Interior Karnataka.

For more details of realised weather, kindly refer [Annexure I](#).

i. Weather Systems, Forecast and Warnings (refer to [Annexure II & III](#)):

- ❖ The western end of monsoon trough at mean sea level runs north of its normal position and eastern end runs near the foothills of the Himalayas at mean sea level.
- ❖ An **upper air cyclonic circulation** over central parts of Uttar Pradesh in lower tropospheric levels and another over northeast Arabian sea and adjoining Gujarat in lower tropospheric levels.
- ❖ An **upper air cyclonic circulation** lies over north interior Karnataka in middle tropospheric levels.
- ❖ A low-pressure area is likely to form over northwest & adjoining westcentral Bay of Bengal around 13th August, 2025.
- ❖ The **Western Disturbance** seen as a cyclonic circulation over north Pakistan & neighbourhood in lower & middle tropospheric levels.

Under the influence of these systems, the following weather is likely:

Northwest India:

- ❖ Isolated **heavy rainfall** likely over Jammu-Kashmir-Ladakh-Gilgit-Baltistan-Muzaffarabad on 10th & 16th; Himachal Pradesh on 10th, 15th & 16th; Punjab on 10th, 11th, 14th & 15th, Haryana, Chandigarh & Delhi on 10th, 11th & during 13th-15th; West Uttar Pradesh on 10th & 16th; East Uttar Pradesh on 12th & 15th; East Rajasthan on 15th & 16th August with **extremely heavy rainfall** likely over Uttarakhand on 13th; **very heavy rainfall** over Jammu-Kashmir during 13th-15th; Himachal Pradesh during 11th-14th; Uttarakhand on during 10th-12th & 14th-16th; West Uttar Pradesh on 13th & 15th; East Uttar Pradesh on 13th & 14th August.
- ❖ Light/moderate rainfall at many places accompanied with thunderstorm & lightning likely over Himachal Pradesh on 10th August; Jammu-Kashmir-Ladakh-Gilgit-Baltistan-Muzaffarabad & Uttarakhand during next 7 days.

Northeast India:

- ❖ Light/moderate rainfall at many places accompanied with thunderstorm, lightning and isolated **heavy rainfall** likely to continue over Arunachal Pradesh on 10th, 11th & 13th; Assam & Meghalaya during 10th, 11th & 14th; Nagaland, Manipur, Mizoram & Tripura on 10th, 13th & 14th with isolated **very heavy rainfall over** Arunachal Pradesh on 12th and Assam & Meghalaya on 12th & 13th August.

- ❖ Light/moderate rainfall at many places accompanied with thunderstorm & lightning likely during next 3 days.

South Peninsular India:

- ❖ Isolated **heavy rainfall** likely over Tamil Nadu, Rayalaseema on 10th; North Interior Karnataka during 14th - 16th; South Interior Karnataka on 15th & 16th; Coastal Andhra Pradesh & Yanam on 10th, 12th, 13th & 16th; Rayalaseema on 10th, 14th & 15th; Telangana during 10th-12th; Coastal Karnataka during 14th -16th August with isolated **very heavy rainfall over Coastal Andhra Pradesh & Yanam on 14th & 15th; Telangana during 13th-16th August.**
- ❖ Strong surface winds (speed reaching 40-50 kmph) very likely over South Peninsular India during next 2 days.
- ❖ Light to moderate rainfall at most/many places accompanied with thunderstorm & lightning likely over, Rayalaseema, Coastal Andhra Pradesh & Yanam and Telangana during next 5 days & Karnataka during 14th -16th.

East & Central India:

- ❖ Isolated **heavy rainfall** likely over West Madhya Pradesh on 10th, 14th & 16th; East Madhya Pradesh during 10th-16th; Vidarbha on 12th, 15 & 16th; Chhattisgarh on 12th; Andaman & Nicobar Islands on 11th; Sub-Himalayan West Bengal & Sikkim on 10th, 13th & 14th; Bihar during 10th-13th; Odisha on 15th & 16th August **with isolated very heavy rainfall over West Madhya Pradesh on 15th; Vidarbha on 13th & 14th; Chhattisgarh on during 13th - 16th; Sub-Himalayan West Bengal & Sikkim on 11th & 12th; Odisha during 12th & 14th August.**
- ❖ Light to moderate rainfall at most/many places accompanied with thunderstorm & lightning likely over the region during next 5 days.

West India:

- ❖ Isolated **heavy rainfall** likely over Madhya Maharashtra during 14th - 16th; Konkan & Goa during 12th-16th August **with isolated very heavy rainfall over Gujarat Region on 10th August.**
- ❖ Light to moderate rainfall at many/some places very likely over the region during next 7 days.

Fishermen warning:

Fishermen are advised to avoid venturing into the following from 10th August to 15th August 2025 to the following Areas:

Arabian Sea Some parts of southwest & westcentral Arabian Sea during 10th to 12th August, most parts of westcentral Arabian Sea & adjoining some parts of eastcentral Arabian Sea, southern parts of north Arabian Sea during 12th to 15th August, over some parts of Comorin areas during 11th to 15th August, along and off north Gujarat coast, adjoining northeast Arabian Sea during 12th to 15th August; along and off Konkan & Goa coasts during 13th to 15th August.

Along and off the Somalia coast and adjoining sea areas during 10th to 15th August, along and off. Oman coast during 11th to 15th of August, along and off Yemen coast during 12th to 15th August.

Bay of Bengal:

Along and off Sri Lanka coast during 11th to 15th August, over some parts of southwest Bay of Bengal for 10th August & over entire southwest Bay of Bengal during 11th to 15th August, parts of southeast and westcentral Bay of Bengal adjoining to southwest Bay of Bengal during 12th to 15th August, along and off south Andhra Pradesh coast adjoining westcentral Bay of Bengal on 10th August; along and off north Andhra Pradesh, south Odisha coasts during 13th to 15th August.

Over Gulf of Mannar and along and off south Tamil Nadu coast during 10th to 15th August.

Over Andaman Sea during 11th to 15th August.

Total suspension of fishing operations is suggested over above mentioned areas and dates.

ii. Weather conditions and forecast over Delhi/NCR during 10th to 12th August, 2025 (Annexure IV)

For more details, kindly refer National Weather Bulletin:

https://mausam.imd.gov.in/responsive/all_india_forecast_bulletin.php

For District wise warnings refer: <https://mausam.imd.gov.in/responsive/districtWiseWarningGIS.php>

For Fishermen warning refer <https://rsmcnewdelhi.imd.gov.in/fishermen-warning.php>

Rainfall recorded (in cm) during past 24 hours till 0830 hours IST of today, the 10th August:

- ❖ **Jammu-Kashmir-Ladakh-Gilgit-Baltistan-Muzaffarabad:** Reasi Arg (dist Reasi) 3, Katra (dist Reasi) 3, Kathua (dist Kathua) 2;
- ❖ **East Uttar Pradesh:** Chunar (dist Mirzapur) 4, Hardoi Teh (dist Hardoi) 2;
- ❖ **West Uttar Pradesh:** Atrauli (dist Aligarh) 13, Lalitpur (dist Lalitpur) 12, Gunnaur (dist Sambhal) 9, Mahroni (dist Lalitpur) 7, Khekda (dist Baghpat) 6, Baghpat (dist Baghpat) 5, Chandpur (dist Bijnor) 4, Amroha (dist Amroha) 4, Anupshahr (dist Bulandshahar) 4, Nauganva Sadat (dist Amroha) 3, Kasganj (dist Kasganj) 3, Agra Obsy (dist Agra) 3, Ghioror (dist Mainpuri) 3, Aligarh (dist Aligarh) 2, Dhampur (dist Bijnor) 2, Budaun (dist Budaun) 2, Hasanpur (dist Amroha) 2;
- ❖ **Uttarakhand:** Sama (dist Bageshwar) 5, Loharkhet (dist Bageshwar) 4, Kapkot (dist Bageshwar) 3, Chamoli (dist Chamoli) 3, Karnaprayag (dist Chamoli) 3, Nainital (dist Nainital) 3, Haripur (dist Dehradun) 2;
- ❖ **Gangetic West Bengal:** Midnapore (dist West Midnapore) 3, Midnapore(cwc) (dist West Midnapore) 3, Asansol(cwc) (dist Paschim Bardhaman) 2;
- ❖ **Sub Himalayan West Bengal & Sikkim:** Newlands Tea Garden (dist Alipurduar) 9, Kumargram Tea Estate (dist Alipurduar) 8, Sankosh (dist Cooch Behar) 7, Ghatia T.e. (dist Jalpaiguri) 6, Hilla T.e. (dist Jalpaiguri) 6, Singimari (dist Cooch Behar) 6, Sankos Tea Estate (dist Alipurduar) 5, Kurti T.e. (dist Jalpaiguri) 4, Raidak Tea Estate (dist Alipurduar) 4, Toorsa Tea Garden (dist Alipurduar) 4, Indong T.e. (dist Jalpaiguri) 3, Chengmari/diana (dist Jalpaiguri) 3, Diana Tea Estate (dist Jalpaiguri) 3, Bhagatpur Tea Estate (dist Jalpaiguri) 3, Zurrantee T.e (dist Jalpaiguri) 2, Shipgyar (dist Mangan) 2, Gyalsing (pto) (dist Gyalshing) 2, Balurghat (dist South Dinajpur) 2, Aibheel Tea Estate (dist Jalpaiguri) 2, Soongachi T.e. (dist Jalpaiguri) 2, Nagarkata (dist Jalpaiguri) 2, Mogulkata Tea Estate (dist Jalpaiguri) 2, Cooch Behar (dist Cooch Behar) 2;
- ❖ **East Rajasthan:** Nagar (Bharatpur) 3, Uniara / Aligarh (Tonk) 3, Sangod (Kota) 3;
- ❖ **Punjab:** Ludhiana Irr (dist Ludhiana) 8, Ranjit Sagar Dam Site (dist Pathankot) 4, Pau Ludhiana (dist Ludhiana) 3, Lohand (dist Rupnagar) 3, Phangota (dist Pathankot) 3, Pathankot Iaf (dist Pathankot) 3, Malikpur (dist Pathankot) 3, Khanna (dist Ludhiana) 2, Shahpur Kandi (dist Pathankot) 2, Manihala Irr (dist Tarn Taran) 2;
- ❖ **East Madhya Pradesh:** Bina (dist Sagar) 15, Damoh-aws (dist Damoh) 11, Umari-aws (dist Umari) 7, Huzur (dist Rewa) 6, Pawai (dist Panna) 6, Devser (dist Singrauli) 5, Rampur Baghelan (dist Satna) 5, Rewa-aws (dist Rewa) 5, Chand (dist Chindwara) 5, Karkeli (dist Umari) 5, Lakhnadon (dist Seoni) 5, Deori (dist Sagar) 4, Bajag (dist Dindori) 4, Jabera (dist Damoh) 4, Sarai (dist Singrauli) 4, Ramnagar (dist Satna) 4, Kesli (dist Sagar) 3, Barghat (dist Seoni) 3, Sausar (dist Chindwara) 3, Sleemanabad (dist Katni) 3, Shahpura (dist Dindori) 3, Shahdole(sohagpur) (dist Shahdol) 3, Tendukheda (dist Damoh) 3, Manpur (dist Umari) 3;
- ❖ **West Madhya Pradesh:** Kurwai (dist Vidisha) 5, Chanderi (dist Ashoknagar) 5, Goharganj (dist Raisen) 4, Tonkhurd (dist Dewas) 4, Vidisha (dist Vidisha) 4, Khaknar (dist Burhanpur) 3, Barod (dist Agar-malwa) 3, Shegaon (dist Khargone) 3, Bhanpura (dist Mandsaur) 3, Pachmarhi (dist Narmadapuram) 3, Sehore-aws (dist Sehore) 3, Bhagwanpura (dist Khargone) 3;
- ❖ **Himachal Pradesh:** Kangra Aero (dist Kangra) 7, Palampur (dist Kangra) 5, Sarahan (dist Shimla) 3, Shimla Aero (dist Shimla) 2, Dharmasala (dist Kangra) 2, Pandoh (dist Mandi) 2;
- ❖ **Haryana Chandigarh & Delhi:** Rai Rev (dist Sonapat) 12, Sonapat (dist Sonapat) 9, Madluda Rev (dist Panipat) 8, Ganaur (dist Sonapat) 5, Kharkoda (dist Sonapat) 5, Khanpur Rev (dist Sonapat) 4, Bhadkal (dist Faridabad) 4, Gurgaon Rev (dist Gurgaon) 4, Faridabad (dist Faridabad) 4, Bahadurgarh (dist Jhajjar) 3, Palwal (dist Palwal) 3, Mohna (dist Faridabad) 3, Israna (dist Panipat) 3, Panipat (dist Panipat) 3, Hathin (dist Palwal) 3, Samalkha (dist Panipat) 2, Manesar Rev (dist Gurgaon) 2, Nissing Rev (dist Karnal) 2, Kaul Aws (dist Kaithal) 2, Dhauj (dist Faridabad) 2, Ballabgarh (dist Faridabad) 2, Taoru (dist Nuh) 2, Dharuheda Rev (dist Rewari) 2, Kosli (dist Rewari) 2, President House (dist New Delhi) 7; Kharkoda (dist Sonapat), Ganaur (dist Sonapat), Ayanagar AWS (dist South Delhi) 5 Each; Faridabad (dist Faridabad), Delhi University Obs (dist Central Delhi), Gurgaon REV (dist Gurgaon), Khanpur REV (dist Sonapat), Bhadkal (dist Faridabad), Delhi Ridge (dist Central Delhi) 4 Each; Hathin (dist Palwal), Palwal (dist Palwal), Bahadurgarh (dist Jhajjar), Mohna (dist Faridabad), Pusa AWS (dist West Delhi), Israna (dist Panipat), Aya Nagar (dist South Delhi), Safdarjung (dist South East Delhi), Panipat (dist Panipat) 3 Each; Lodi Road (dist South East Delhi), Najafgarh AWS (dist South West Delhi),

Samalkha (dist Panipat), Taoru (dist Nuh), Ballabgarh (dist Faridabad), Dhansa (dist South West Delhi), Dharuheda REV (dist Rewari), Nissing REV (dist Karnal), Manesar REV (dist Gurgaon), Kaul AWS (dist Kaithal), Pragati Maidan (dist New Delhi), Dhauj (dist Faridabad), Palam (dist New Delhi), Kosli (dist Rewari) 2 Each;;

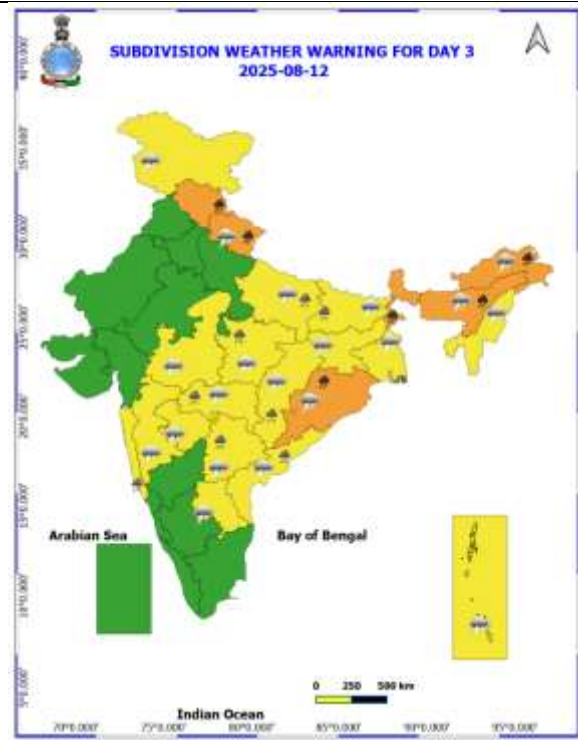
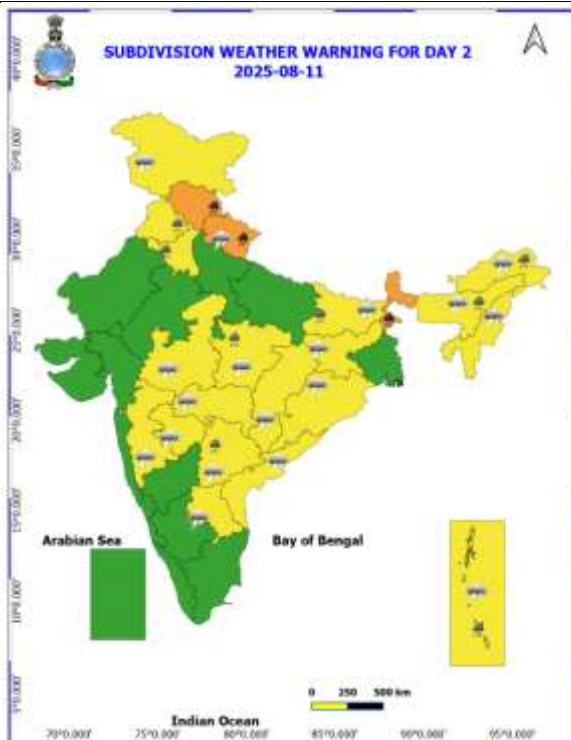
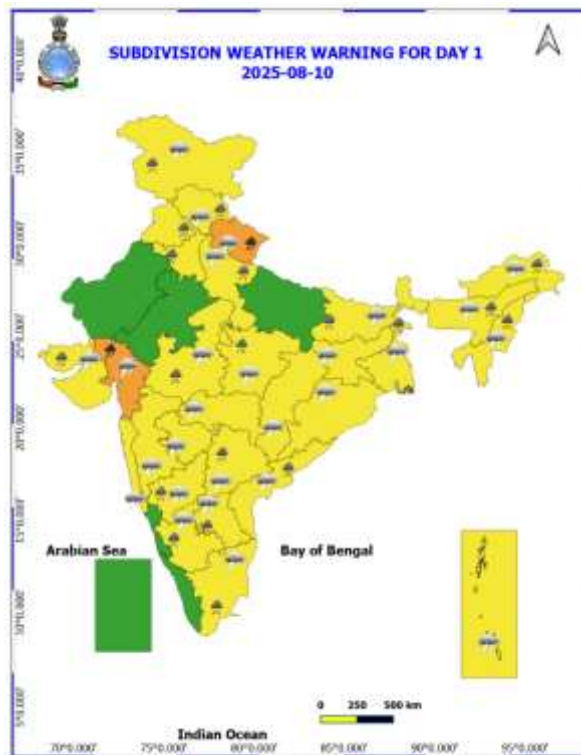
- ❖ **Tamil Nadu, Pudicherry & Karaikal:** Usilampatti (dist Madurai) 9; Peraiyur (dist Madurai) 8; Srivilliputhur (dist Virudhunagar) 7; Karur (dist Karur), Lakkur (dist Cuddalore) 5 Each; Vadipatti (dist Madurai), Rasipuram (dist Namakkal), Keeranur (dist Pudukkottai), Melalathur (dist Vellore), Krishnarayapuram (dist Karur), Puduchatram (dist Namakkal), Kuppanampatti (dist Madurai), Worth Estate Cher (dist Nilgiris), Elumalai (dist Madurai) 4 Each; Chinnakalar (dist Coimbatore), Hogenekal (dist Dharmapuri), Palacode (dist Dharmapuri), Odanchatram (dist Dindigul), Aravakurichi (dist Karur), Panchapatti (dist Karur), Naduvattam (dist Nilgiris), Chettikulam (dist Perambalur), Viralimalai (dist Pudukkottai), Attur (dist Salem), Mohanur (dist Namakkal), Krishnapuram (dist Perambalur), Udayalipatti (dist Pudukkottai), Kalasapakkam (dist Tiruvannamalai), Kunderipallam (dist Erode), Kodivery (dist Erode) 3 Each;
- ❖ **Arunachal Pradesh:** Pasighat AP (dist East Siang) 6; Tezu (dist Lohit) 3; Seppa (dist East Kameng) 2;
- ❖ **Nagaland, Manipur, Mizoram & Tripura:** Tamenglong (dist Tamenglong) 7;
- ❖ **Telangana:** Amberpet (dist Hyderabad), Himayatnagar (dist Hyderabad) 10 Each; Kosgi (dist Narayanpet), Gambhiraopet (dist Rajanna Sircilla) 9 Each; Machareddy (dist Kamareddy) 8; Bhadrachalam (dist B. Kothagudem), Burgampadu (dist B. Kothagudem), Hayathnagar (dist Rangareddy), Chegunta (dist Medak), Tekmal (dist Medak), Shekpet (dist Hyderabad) 7 Each; Jogipet (dist Sangareddy), Sangareddy AP (dist Sangareddy), Lingampet (dist Kamareddy), Maddur (dist Narayanpet), Kowdipalle (dist Medak), Hathanoora (dist Sangareddy), Ellanthukunta (dist Rajanna Sircilla), Charminar (dist Hyderabad) 6 Each; Saroonagar (dist Rangareddy), Bejjanki (dist Siddipet), Sangareddy (dist Sangareddy), Papannapet (dist Medak), Ramayampet (dist Medak) 5 Each; Manchal (dist Rangareddy), Hyderabad AP (dist Hyderabad), Kotgiri (dist Nizamabad), Mustabad (dist Rajanna Sircilla), Narmetta (dist Jangaon), Alladurg (dist Medak), Narsapur (dist Medak), Munipalli (dist Sangareddy), Chandurthi (dist Rajanna Sircilla), Bala Nagar (dist Mahabubnagar), Belampalle (dist Mancherla) 4 Each;
- ❖ **Jharkhand:** Garhwa Kvk AWS (dist Garhwa), Bariyatu (dist Latehar) 6 Each; Panchet (dist Dhanbad) 5; Panchet Dvc (dist Dhanbad) 4; Kuru (dist Lohardaga), Maithon (dist Dhanbad), Maithon Dvc (dist Dhanbad) 3 Each; Mandar (dist Ranchi), Papunki (dist Dhanbad), Chandankiary (dist Bokaro) 2 Each;
- ❖ **North Interior Karnataka:** Afzalpur Hms (dist Kalaburgi) 10, Tavaragera (dist Koppal) 9, Kerur (dist Bagalkote) 7, Kembhavi (dist Yadgir) 7, Bilgi (irri.) (dist Bagalkote) 7, Bellatti (dist Gadag) 6, Chincholi (dist MKalaburgi) 6, Hungund (dist Bagalkote) 6, Gangavathi (dist Koppal) 5, Tidagundi Agro (dist Vijayapura) 5, Manthala (dist Bidar) 5, Ganagapura Arg (dist Kalaburgi) 5, Devarhippargi (dist Vijayapura) 4, Muddebihal (dist Vijayapura) 4, Kudalasangama (dist Bagalkote) 4, Sindgi (dist Vijayapura) 4, Kalaburgi Obsy (dist Kalaburgi) 3, Yedrami (dist Kalaburgi) 3, Kaladgi (dist Bagalkote) 3, Humnabad (dist Bidar) 3, Deodurg (dist Raichur) 3, Talikote (dist Vijayapura) 3, Narayanpur Hms (dist Yadgir) 3, Ilkal (dist Bagalkote) 3, Kamalapur (dist Kalaburgi) 3.
- ❖ **South Interior Karnataka:** Gowribidanur (dist Chikaballapura) 12, Bargur (dist Tumakuru) 8, Hoskote (dist Bengaluru Rural) 5, Harapanahalli (dist Vijayanagara) 4, Nayakanahatty (dist Chitradurga) 3, Thondebhavi (dist Chikaballapura) 3, Jagalur (dist Davangere) 3, Maddur (dist Mandya) 3.
- ❖ **Odisha:** Jhumpura (dist Keonjhar) 5, Harichandanpur (dist Keonjhar) 4, Nandapur (dist Koraput) 4, Patnagarh (dist Bolangir) 3, Koraput (dist Koraput) 3, Malkangiri (dist Malkangiri) 3, Sohela (dist Bargarh) 3, Mandira Dam (dist Sundargarh) 3, Gosani (dist Gajapati) 3, Banarpal (dist Angul) 2, Gondia (dist Dhenkanal) 2, Similiguda (dist Koraput) 2, Raikia (dist Kandhamal) 2, Bolagarh (dist Khurda) 2, Jeypore (dist Koraput) 2, Daringibadi (dist Kandhamal) 2, Dabugan (dist Nawarangpur) 2;
- ❖ **Assam & Meghalaya:** Shella (dist East Khasi Hills) 19; Cherrapunji (dist East Khasi Hills) 14; Mawsynram (dist East Khasi Hills), Cherrapunji(rkm) (dist East Khasi Hills) 13 Each; Williamnagar (dist East Garo Hills) 7; Bhaghmara (dist South Garo Hills) 6; Williamnagar AWS (dist East Garo Hills), Mawkyrwat (dist South West Khasi Hills) 5 Each; Karimganj (dist Sribhumi), Dudhnoi ARG (dist Goalpara) 4 Each; Jowai AWS (dist West Jaintia Hills), Mawphlang (dist East Khasi Hills), Resubelpara (dist North Garo Hills), Dhubri IMD (dist Dhubri), Khliehriat (dist East Jaintia Hills), Goalpara AWS (dist Goalpara) 3 Each; Goalpara CWC (dist Goalpara), Khowang (dist Dibrugarh), Mushalpur AWS (dist Baksa), Tura AWS (dist West Garo Hills), Majuli (dist Majuli), Bhumuraguri (dist Sonitpur), Khetri ARG (dist Kamrup (rural)) 2 Each;

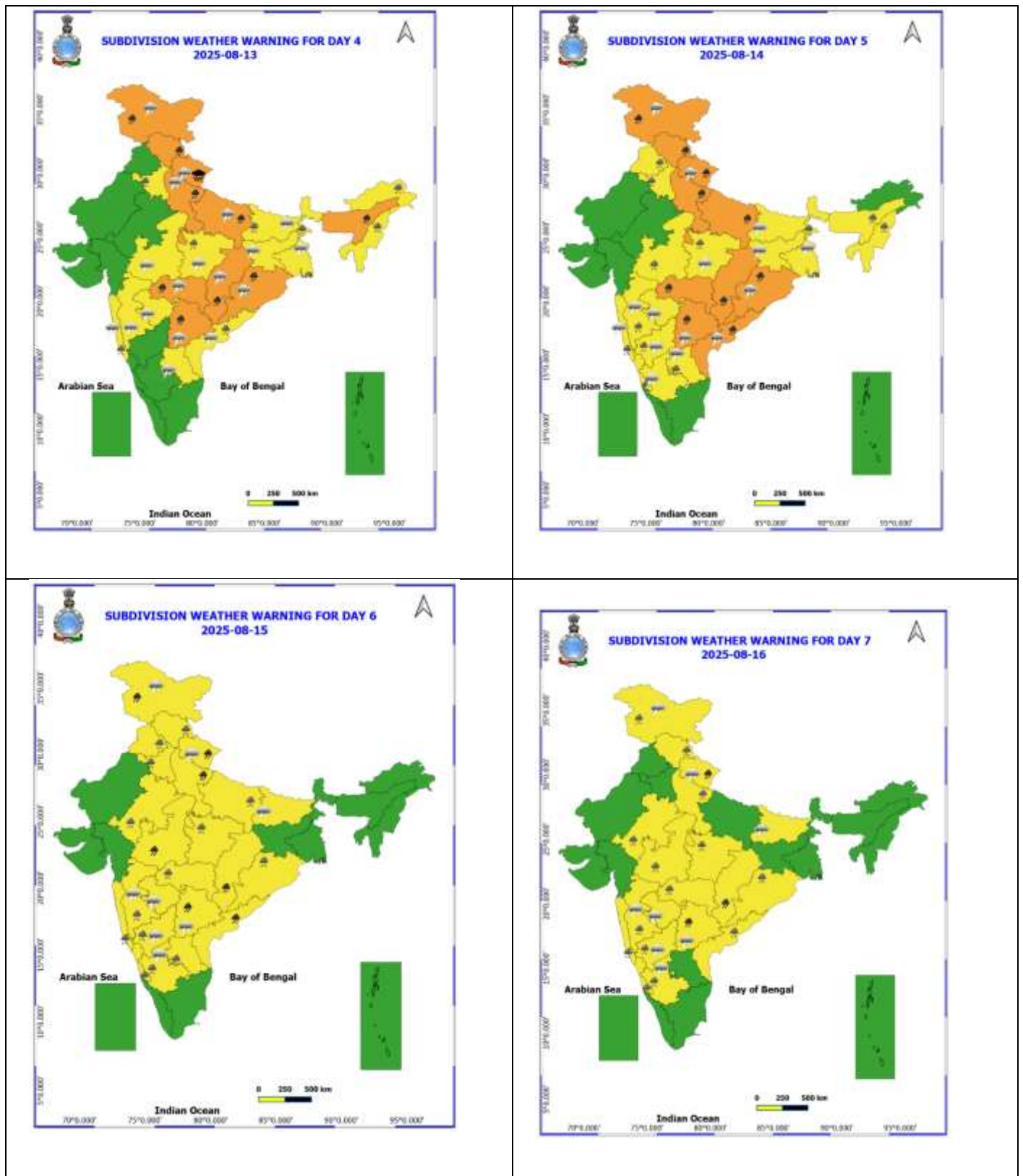
- ❖ **Vidarbha:** Sindkhed Raja (dist Buldhana) 4; Manora (dist Washim), Sindewahi (dist Chandrapur), Darwha (dist Yeotmal), Deolgaon Raja (dist Buldhana), Perseoni (dist Nagpur) 2 Each; Konkan & Goa: Panvel ARG (dist Raigad), Khalapur (dist Raigad) 4 Each; Shahapur (dist Thane), Matheran (dist Raigad), Karjat ARG (dist Raigad), Palghar ARG (dist Palghar) 3 Each; Tbia IMD Part Time (dist Thane), Harnai IMD (dist Ratnagiri), Thane (dist Thane), Sudhagad Pali (dist Raigad), Murbad (dist Thane), Rameshwar ARG (dist Sindhudurg) 2 Each;
- ❖ **Gujarat Region:** Gujarat Region Daman (dist Daman) PTO data 11, Valsad (dist Valsad) 10, Daman_aws (dist Daman)9, Daman (dist Daman) 5, Daman Fmo (dist Daman) 4, Chikhli (dist Navsari) 3, Madhbun (distDadara & Nagar Haveli) 2, Pardi (dist Valsad) 2, Subir (dist Dangs) 2, Khanvel (dist Dadara & NagarHaveli) 2, Kaprada (dist Valsad) 2,
- ❖ **Rayalaseema:** Tadpatri (dist Anantapuramu) 7, Nallamada (dist Sri Sathyasai District) 7, Kondapuram (dist Ysr District) 6, Puttur (dist Tirupati) 6, Settur (dist Anantapuramu) 6, Obuladevaracheruvu (dist Sri Sathyasai District) 5, Tadimarri (dist Sri Sathyasai District) 5, Palamaner (dist Chittoor) 5, Tanakal (dist Sri Sathyasai District) 5, Penu Konda (dist SriSathyasai District) 5, Chenne Kothapalle (dist Sri Sathyasai District) 4, Gorantla (dist SriSathyasai District) 4, Bathalapalle (dist Sri Sathyasai District) 4, Madakasira (dist Sri Sathyasai District) 4, Dharmavaram (dist Sri Sathyasai District) 3, Rudravaram (dist Nandyal) 3, Venkatagiri Kota (dist Chittoor) 3, Allagadda (dist Nandyal) 3, Pullampeta (dist Annamayya District) 3, Gummagatta (dist Anantapuramu) 3, Kadiri (dist Sri Sathyasai District) 3, Lakkireddipalle (dist Annamayya District) 2, Punganur (dist Chittoor) 2, Simhadripuram (dist Ysr District) 2, Vallur (dist Ysr District) 2, Hindupur (dist Sri Sathyasai District) 2, Atlur (dist Ysr District) 2, Dornipadu (dist Nandyal) 2, Devanakonda (dist Kurnool) 2;
- ❖ **Chhattisgarh:** Konta (dist Sukma) 6, Chhotedongar (dist Narayanpur) 5, Sukma (dist Sukma) 4, Sonhat (dist Koriya) 4, Gadiras (dist Sukma) 3, Janakpur Bharatpur (dist Manendragarh Bharatpur) 2, Antagarh (dist Kanker) 2, Rengakhar Kala (dist Kabirdham) 2, Kohkameta (dist Narayanpur) 2, Makadi (dist Kondagaon) 2, Kawardha (dist Kabirdham) 2;
- ❖ **Konkan & Goa:** Khalapur (dist Raigad) 4, Panvel_agri (dist Raigad) 4, Matheran (dist Raigad) 3, Karjat_agri (dist Raigad) 3, Shahapur (dist Thane) 3, Palghar_agri (dist Palghar) 3, Harnai Imd Obsy (dist Ratnagiri) 3, Tbia Imd Part Time (dist Thane) 2, Rameshwar_agri (dist Sindhudurg) 2, Murbad (dist Thane) 2, Sudhagad Pali (dist Raigad) 2, Thane (dist Thane) 2;
- ❖ **Madhya Maharashtra:** Jat (dist Sangli) 4, Akalkot (dist Sholapur) 4, Gaganbawada (dist Kolhapur) 3, Sholapur - Imd Obsy (dist Sholapur) 3, Pandharpur (dist Sholapur) 2, Hatkanangale (dist Kolhapur) 2, Sankh (dist Sangli) 2, Tasgaon (dist Sangli) 2, Shrigonda (dist Ahilyanagar) 2, Kagal (dist Kolhapur) 2;
- ❖ **Marathwada:** Pathri (dist Parbhani) 3, Shirur Kasar (dist Beed) 3, Sambhajinagarobsy (dist Chh.Sambhajinagar) 2;
- ❖ **Coastal Andhra Pradesh & Yanam:** Balajipeta (dist Parvathipuram Manyam) 7, Chintur (dist Alluri Sitharamaraju) 5, Kandukur (dist Spsr Nellore) 5, Komarada (dist Parvathipuram Manyam) 4, Parvathipuram (dist Parvathipuram Manyam) 4, Velairpad (dist Eluru) 3, Pathapatnam (dist Srikakulam) 3, Srungavarapukota (dist Vizianagaram) 3, Narsapuram (dist West Godavari) 3, Gantyada (dist Vizianagaram) 2, Bobbili (dist Vizianagaram) 2, Tiruvuru (dist Ntr District) 2, Kunavaram (dist Alluri Sitharamaraju) 2, Bheemavaram (dist West Godavari) 2, Veeraghattam (dist Parvathipuram Manyam) 2, Araku Valley (dist Alluri Sitharamaraju) 2;
- ❖ **Kerala & Mahe:** Idamalayar (dist Ernakulam) 5, Mavelikara (dist Alapuzha) 3, Ranni (dist Pathanamthitta) 2, Ayyankunnu (dist Cannur) 2, Nooranad (dist Alapuzha) 2, Laha (dist Pathanamthitta) 2, Aralam (dist Cannur) 2, Lower Sholayar (dist Thrissur) 2, Konni (dist Pathanamthitta) 2;
- ❖ **Coastal Karnataka:** Siddapura (dist Udupi) 2.

Table-1								
7 Days Rainfall Forecast								
S.No.	Subdivision	10- Aug	11- Aug	12- Aug	13- Aug	14- Aug	15- Aug	16- Aug
		Day 1	Day 2	Day 3	Day 4	Day 5	Day 6	Day 7
1	ANDAMAN & NICOBAR ISLANDS	FWS	WS	WS	WS	WS	FWS	FWS
2	ARUNACHAL PRADESH	FWS	FWS	WS	FWS	SCT	SCT	SCT
3	ASSAM & MEHGHALAYA	WS	FWS	FWS	WS	WS	FWS	FWS
4	NAGALAND, MANIPUR, MIZORAM AND TRIPURA	FWS	FWS	FWS	WS	WS	FWS	FWS
5	SUB HIMALAYAN WEST BENGAL & SIKKIM	WS	WS	WS	FWS	FWS	FWS	FWS
6	GANGETIC WEST BENGAL	SCT	SCT	FWS	FWS	FWS	FWS	FWS
7	ODISHA	SCT	SCT	FWS	FWS	FWS	FWS	FWS
8	JHARKHAND	FWS	FWS	FWS	WS	WS	FWS	FWS
9	BIHAR	SCT	SCT	FWS	FWS	SCT	SCT	SCT
10	EAST UTTAR PRADESH	SCT	SCT	FWS	WS	WS	FWS	SCT
11	WEST UTTAR PRADESH	SCT	SCT	SCT	FWS	WS	WS	SCT
12	UTTARAKHAND	WS	WS	WS	WS	WS	WS	WS
13	HARYANA, CHANDIGARH & DELHI	SCT	SCT	ISOL	SCT	FWS	FWS	SCT
14	PUNJAB	SCT	SCT	ISOL	SCT	FWS	FWS	SCT
15	HIMACHAL PRADESH	WS	WS	WS	SCT	WS	WS	FWS
16	JAMMU AND KASHMIR AND LADAKH	SCT	SCT	SCT	FWS	WS	WS	SCT
17	WEST RAJASTHAN	DRY	ISOL	ISOL	ISOL	ISOL	ISOL	ISOL
18	EAST RAJASTHAN	ISOL	ISOL	ISOL	ISOL	SCT	SCT	SCT
19	WEST MADHYA PRADESH	SCT	SCT	FWS	FWS	FWS	WS	WS
20	EAST MADHYA PRADESH	FWS	FWS	FWS	WS	WS	WS	WS
21	GUJRAT REGION	SCT	SCT	SCT	SCT	SCT	SCT	FWS
22	SAURASHTRA & KUTCH	SCT	SCT	SCT	SCT	SCT	SCT	SCT
23	KONKAN & GOA	FWS	FWS	WS	WS	WS	WS	WS
24	MADHYA MAHARASHTRA	SCT	ISOL	ISOL	SCT	SCT	SCT	SCT
25	MARATHWADA	SCT	ISOL	ISOL	ISOL	SCT	SCT	SCT
26	VIDARBHA	FWS	FWS	FWS	WS	WS	WS	WS
27	CHHATTISGARH	SCT	FWS	WS	WS	WS	WS	WS
28	COASTAL ANDHRA PRADESH	SCT	SCT	FWS	FWS	WS	WS	FWS
29	TELANGANA	WS	WS	WS	WS	WS	WS	WS
30	RAYALASEEMA	SCT	SCT	SCT	FWS	FWS	FWS	SCT
31	TAMILNADU & PUDUCHERRY	SCT	ISOL	ISOL	ISOL	ISOL	ISOL	ISOL
32	COSTAL KARNATAKA	WS	WS	WS	WS	WS	WS	WS
33	NORTH INTERIOR KARNATAKA	WS	FWS	FWS	FWS	FWS	WS	WS
34	SOUTH INTERIOR KARNATAKA	WS	FWS	FWS	FWS	FWS	FWS	FWS
35	KERALA AND MAHE	FWS	FWS	FWS	FWS	WS	WS	WS
36	LAKSHADWEEP	FWS	FWS	FWS	FWS	FWS	FWS	FWS

- As the lead period increases forecast accuracy decrease.

ANNEXURE III





- Action may be taken based on ORANGE AND REDCOLOUR warnings.
- Vulnerable regions likely urban and hilly areas action may be initiated for heavy rainfall warning.
- As the lead period increases forecast accuracy decreases.

Detailed districtwise Multi Hazard weather warning for next five days available at <https://mausam.imd.gov.in/responsive/districtWiseWarningGIS.php>

Weather forecast over Delhi/NCR during 10th August to 13th August 2025

Past Weather:

There has been a significant change in minimum and maximum temperatures in the past 24 hours over Delhi. The minimum temperatures are in the range of 22-25°C, and the maximum temperatures are in the range of 26-27°C. The minimum temperatures are appreciably below normal by 3-4°C, and maximum temperatures were markedly below normal by 8-9°C over Delhi. South-westerly winds prevailed with wind speeds up to 14 kmph in the past 24 hours over Delhi. Maximum rainfall of 50.0 mm has been recorded at Mayur Vihar during the past 24 hrs over Delhi. South-westerly winds with a wind speed of up to 12-16 kmph over the region in the forenoon today.

Weather Forecast:

10.08.2025: Partly cloudy sky. Possibility of very light to light rain at isolated places accompanied by thundershowers towards evening/night. The maximum temperatures over Delhi are likely to be in the range of 29 to 31°C. The maximum temperature will be below normal by up to 3 to 5°C. The predominant surface wind will likely be from the southwest direction with a wind speed of up to 08-10 kmph during the afternoon hours. The wind speed will remain the same from the southeast direction during the evening and night.

11.08.2025: Partly cloudy sky. Possibility of very light to light rain accompanied by thundershowers. The maximum and minimum temperatures over Delhi are likely to be in the range of 33 to 35°C and 24 to 26°C, respectively. The maximum temperature will be near normal, and the minimum temperature will be below normal by 1 to 2 °C. The predominant surface wind is likely to be from the southeast direction with a wind speed of up to 08-10 kmph during morning hours. The predominant surface wind is likely to be from the southeast direction with a wind speed of 05-10 kmph during the afternoon hours. The wind speed will increase gradually, reaching up to 10-15 kmph from the southeast direction during the evening and night.

12.08.2025: Partly cloudy sky. Possibility of very light to light rain accompanied by thundershowers. The maximum and minimum temperatures over Delhi are likely to be in the range of 31 to 33°C and 24 to 26°C, respectively. The maximum temperature will be near normal, and the minimum temperature will be below normal by 1 to 2 °C. The predominant surface wind is likely to be from the west direction with a wind speed of up to 15-20 kmph during morning hours. The predominant surface wind will decrease, becoming 05-10 kmph from the north-northwest direction during the afternoon hours. The wind speed will increase gradually, reaching up to 10-15 kmph from the west direction during the evening and night.

13.08.2025: Generally cloudy sky. One or two spells of light to moderate rain accompanied by thundershowers towards evening/night. The maximum and minimum temperatures over Delhi are likely to be in the range of 32 to 34°C and 22 to 24°C, respectively. The maximum temperature will be near normal, and the minimum temperature will be below normal by 3 to 5 °C. The predominant surface wind is likely to be from the west direction with a wind speed of up to 10-25 kmph during morning hours. The predominant surface wind will decrease, becoming 05-10 kmph from the north-northwest direction during the afternoon hours. The wind speed will increase gradually, reaching up to 10-15 kmph from the west direction during the evening and night.

Impact & Action Suggested due to

- ❖ **Extremely heavy rainfall** likely over Uttarakhand on 13th August; **very heavy rainfall** over Gujarat Region on 10th August; Jammu-Kashmir during 13th-15th; Himachal Pradesh during 11th-14th; Uttarakhand on during 10th-12th & 14th-16th; West Uttar Pradesh on 13th & 15th; East Uttar Pradesh, Vidarbha on 13th & 14th; Arunachal Pradesh on 12th; Assam & Meghalaya on 12th & 13th; over Coastal Andhra Pradesh & Yanam on 14th & 15th; Telangana during 13th-16th; West Madhya Pradesh on 15th; Chhattisgarh on during 13th-16th; Sub-Himalayan West Bengal & Sikkim on 11th & 12th; Odisha during 12th & 14th August.

Impact Expected

- Localized Flooding of roads, water logging in low lying areas and closure of underpasses mainly in urban areas of the above region.
- Occasional reduction in visibility due to heavy rainfall.
- Disruption of traffic in major cities due to water logging in roads leading to increased travel time.
- Minor damage to kutcha roads.
- Possibilities of damage to vulnerable structure.
- Localized Landslides/Mudslides/landslips/mudslips/landsinks/mudsinks.
- Damage to horticulture and standing crops in some areas due to inundation.
- It may lead to riverine flooding in some river catchments (for riverine flooding please visit Web page of CWC)

Action Suggested

- Check for traffic congestion on your route before leaving for your destination.
- Follow any traffic advisories that are issued in this regard.
- Avoid going to areas that face the water logging problems often.
- Avoid staying in vulnerable structure.

Agromet advisories for likely impact of Heavy / Heavy to Very Heavy / Extremely Heavy Rainfall

- In Uttarakhand, make necessary arrangements to drain out excess water from the fields of already sown / transplanted rice, sugarcane, maize, black gram, green gram, groundnut, pigeon pea, finger millet, soybean and vegetables in Bhabar and Tarai Zone; and from barnyard millet, finger millet, green gram and black gram in Sub Humid Sub Tropic Zone. In Hill Zone, strengthen the bunds to prevent surface runoff of water. Postpone sowing of vegetable pea till soil attains optimum moisture level. Maintain proper drainage channels in vegetable and crop fields. Undertake harvesting of matured capsicum fruits. Postpone sowing of vegetable pea until the soil attains optimum moisture, especially under excessive wet soil conditions.
- In Himachal Pradesh, provide proper drainage channels in maize, ginger, turmeric and vegetable fields in Mid Hills Sub Humid Zone; and rice, maize and vegetable fields in Sub Montane and Low Hills Sub Tropical Zone. In High Hills Sub Temperate Wet Zone, undertake harvesting of ripened tomato and cover the cauliflower nursery with plastic sheets to prevent damage from heavy rainfall.
- In Madhya Pradesh, provide adequate drainage in the fields of maize, soybean, blackgram, cotton, and pigeon pea in Vindhyan Plateau Zone; maize, soybean, cotton, sugarcane and vegetables in Satpura Plateau Zone; rice, soybean, maize, sugarcane and vegetables in Central Narmada Valley Zone and soybean, pigeon pea, cotton and vegetables in Nimar Valley Zone.
- In Bihar, make provisions to drain out excess water from standing crops such as maize, nurseries of onion, chilli, and cauliflower in North West Alluvial Plain Zone; maize, finger millet, ragi, kodo, sava, china etc. in North East Alluvial Zone.
- In Sub-Himalayan West Bengal, make provision to drain out excess water from rice, ginger, vegetable fields and fruit orchards in Hill Zone and aman paddy and vegetable fields in Terai Zone. Cover the chilli seedlings with plastic to protect them from heavy rains in Terai Zone.
- In Arunachal Pradesh, ensure proper drainage in rice, maize, finger millet, soybean, vegetables, and fruit orchards to avoid waterlogging. Provide strong support to fruit-bearing plants to prevent them from bending or breaking during heavy rains.

- In Assam, to prevent waterlogging, ensure proper drainage in Sali rice, green gram and pigeon pea fields and banana orchards in Lower Brahmaputra Valley Zone; Sali rice and sugarcane fields in North Bank Plain Zone and Sali rice fields in Upper Brahmaputra Valley Zone.
- In Meghalaya, ensure proper drainage in rice, maize, turmeric, chilli, okra and bitter gourd fields to prevent waterlogging. Provide staking/support to tall and fragile crops like banana, papaya, bottle gourd etc. to prevent lodging.
- In Tamil Nadu, ensure proper drainage in sorghum fields to prevent waterlogging, especially in heavy soils and low-lying areas. Ensure proper drainage around the coconut plants to avoid root rot.
- In West Uttar Pradesh, maintain proper drainage in fields of rice, pigeon pea, sugarcane and vegetable crops in South Western Semi-Arid Zone.
- In Telangana, drain out excess water from rice nurseries and recently transplanted rice as well as from fields of cotton, maize, red gram, soybean, sugarcane, and vegetables.

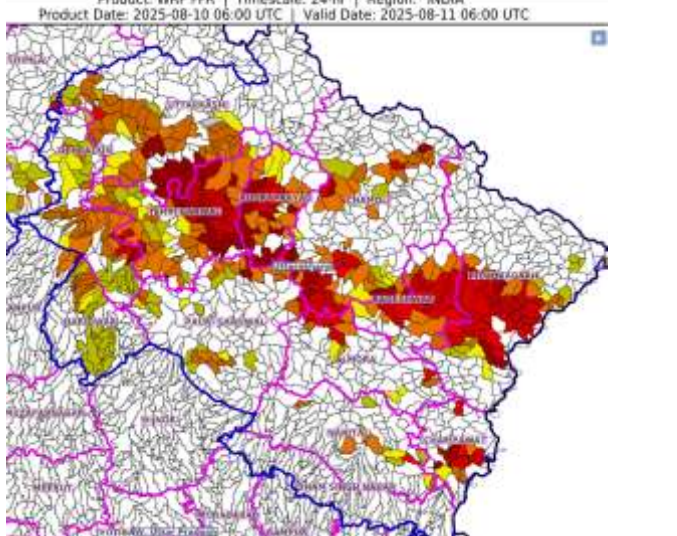
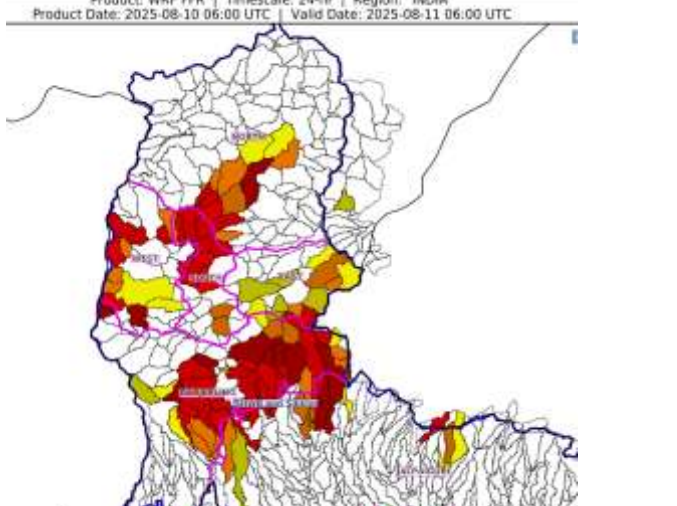
Livestock / Fishery

- Keep the animals inside the shed during heavy rainfall and provide them balanced feed.
- Store feed and fodder in a safe place to prevent spoilage.
- Construct an outlet with proper netting around the ponds to drain out excess water, thereby preventing fish from escaping in case of overflow.

Agromet advisories for likely impact of Thunderstorm / Gusty Winds / Squally Winds)

- Provide mechanical support to horticultural crops and staking or support to vegetables and young fruit plants / fruit-bearing plants to avoid lodging due to strong winds.

Flash flood guidance:

<p>24 hours Outlook for the Flash Flood Risk (FFR) till 1130 IST of 11-08-2025:</p> <p>Low to Moderate flash flood risk likely over few watersheds & neighbourhoods of following Met Sub-divisions during next 24 hours.</p> <p>Uttarakhand - Almora, Bageshwar, Chamoli, Champawat, Dehradun, Haridwar, Nanital, Pauri Garhwal, Pithoragarh, Rudrapur, Tehri Garwal and Udham Singh Nagar districts.</p> <p>Surface runoff/ Inundation may occur at some fully saturated soils & low-lying areas over Area of Concern (AoC) as shown in map due to expected rainfall occurrence in next 24 hours.</p>	
<p>24 hours Outlook for the Flash Flood Risk (FFR) till 1130 IST of 11-08-2025:</p> <p>Low to Moderate flash flood risk likely over few watersheds & neighbourhoods of following Met Sub-divisions during next 24 hours.</p> <p>Sub-Himalayan West Bengal & Sikkim - East Sikkim, North Sikkim, South Sikkim, West Sikkim, Darjeeling and Jalpaiguri districts.</p> <p>Surface runoff/ Inundation may occur at some fully saturated soils & low-lying areas over Area of Concern (AoC) as shown in map due to expected rainfall occurrence in next 24 hours.</p>	

Legends & abbreviations:

- ❖ **Heavy Rain:**64.5-115.5mm; **Very Heavy Rain:**115.6-204.4mm; **Extremely Heavy Rain:** >204.4mm.
- ❖ **Obsy:** Observatory; Automatic Weather Station; **ARG:** Automatic Rain Gauge; **dist:** District; **NH:** National Highway; **KVK:** Krishi Vigyan Kendra; **DVC:** Damodar Valley Corporation; **PTO:** Part Time Office, **Aero:** Aerodrome, **IAF:** Indian Air Force.
- ❖ **Region wise classification of meteorological Sub-Divisions:**
 - **Northwest India:** Western Himalayan Region (Jammu-Kashmir-Ladakh-Gilgit-Baltistan-Muzaffarabad, Himachal Pradesh and Uttarakhand); Punjab, Haryana-Chandigarh-Delhi; West Uttar Pradesh, East Uttar Pradesh, West Rajasthan and East Rajasthan.
 - **Central India:** West Madhya Pradesh, East Madhya Pradesh, Vidarbha and Chhattisgarh.
 - **East India:** Bihar, Jharkhand, Sub-Himalayan West Bengal & Sikkim; Gangetic West Bengal, Odisha and Andaman & Nicobar Islands.
 - **Northeast India:** Arunachal Pradesh, Assam & Meghalaya and Nagaland, Manipur, Mizoram & Tripura.
 - **West India:** Gujarat Region, Saurashtra & Kutch, Konkan & Goa, Madhya Maharashtra and Marathawada.
 - **South India:** Coastal Andhra Pradesh & Yanam, Telangana, Rayalaseema, Coastal Karnataka, North Interior Karnataka, South Interior Karnataka, Kerala & Mahe, Tamil Nadu, Puducherry & Karaikal and Lakshadweep.

LEGENDS

1. अंडमान और निकोबार द्वीपसमूह

2. अरुणाचल प्रदेश

3. असम और मेघालय

4. नागालैंड, मणिपुर, मिजोरम और त्रिपुरा

5. उप-हिमालयी पश्चिम बंगाल और सिक्किम

6. गंगीय पश्चिम बंगाल

7. ओडिशा

8. झारखंड

9. बिहार

10. पूर्वी उत्तर प्रदेश

11. पश्चिम उत्तर प्रदेश

12. उत्तराखंड

13. हरियाणा, चंडीगढ़ और दिल्ली

14. पंजाब

15. हिमाचल प्रदेश

16. जम्मू और कश्मीर और लद्दाख

17. पश्चिम राजस्थान

18. पूर्वी राजस्थान

19. पश्चिम मध्य प्रदेश

20. पूर्वी मध्य प्रदेश

21. गुजरात

22. सौराष्ट्र

23. कोंकण और गोवा

24. मध्य महाराष्ट्र

25. मराठवाड़ा

26. विदर्भ

27. छत्तीसगढ़

28. तटीय आंध्र प्रदेश और यनम

29. तेलंगाना

30. रायलसीमा

31. तमिलनाडु, पुडुचेरी और कराईकल

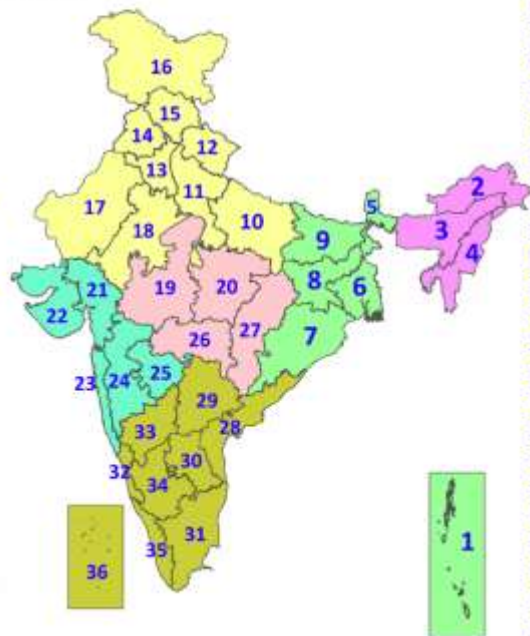
32. तटीय कर्नाटक

33. आंतरिक उत्तरी कर्नाटक

34. आंतरिक दक्षिणी कर्नाटक

35. केरल और माहे

36. लक्षद्वीप



1. Andaman & Nicobar Islands

2. Arunachal Pradesh

3. Assam & Meghalaya

4. Nagaland, Manipur, Mizoram & Tripura

5. Sub-Himalayan West Bengal & Sikkim

6. Gangetic West Bengal

7. Odisha

8. Jharkhand

9. Bihar

10. East Uttar Pradesh

11. West Uttar Pradesh

12. Uttarakhand

13. Haryana, Chandigarh & Delhi

14. Punjab

15. Himachal Pradesh

16. Jammu & Kashmir and Ladakh

17. West Rajasthan

18. East Rajasthan

19. West Madhya Pradesh

20. East Madhya Pradesh

21. Gujarat

22. Saurashtra

23. Konkan & Goa

24. Madhya Maharashtra

25. Marathwada

26. Vidarbha

27. Chhattisgarh

28. Coastal Andhra Pradesh & Yanam

29. Telangana

30. Rayalaseema

31. Tamilnadu, Puducherry & Karaikal

32. Coastal Karnataka

33. North Interior Karnataka

34. South Interior Karnataka

35. Kerala & Mahe

36. Lakshadweep

SPATIAL DISTRIBUTION (% of Stations reporting)

% Stations	Category	% Stations	Category
76-100	Widespread (WS/Most Places)	26-50	Scattered (SCT/A Few Places)
51-75	Fairly Widespread (FWS/Many Places)	1-25	Isolated (ISOL)



Fog



Heavy Snow



Cold Wave



Heavy Rain



Dust Storm



Cold Day



Very Heavy Rain



Heat Wave



Ground Frost



Extremely Heavy Rain



Warm Night



Thunder & Lightning



Hot Day



Hailstorm



Hot & Humid



Dust Raising Winds



Strong Surface Winds

COLOUR CODED WARNING

No Warning (No Action)

Watch (Be Aware)

Alert (Be Prepared To Take Action)

Warning (Take Action)

Probabilistic Forecast

Terms	Probability of Occurrence (%)
Unlikely	< 25
Likely	25 - 50
Very Likely	50 - 75
Most Likely	> 75

* Red colour warning does not mean "Red Alert", Red colour warning means "Take Action".

Forecast and Warning for any day is valid from 0830 hours IST of day till 0830 hours IST of next day.

For more details, kindly visit <https://mausam.imd.gov.in> or contact: 011-2434-4599

(Service to the Nation since 1875)

DEFINITION/CRITERIA

Rain/ Snow *

Heavy: 64.5 to 115.5 mm/cm *
Very Heavy: 115.6 to 204.4 mm/cm *
Extremely Heavy: > 204.4 mm/cm *

Heat Wave

When maximum temperature of a station reaches $\geq 40^{\circ}\text{C}$ for plains and $\geq 30^{\circ}\text{C}$ for hilly regions
(a) Based on Departure from normal

Heat Wave: Maximum Temperature Departure from normal 4.5°C to 6.4°C .

Severe Heat Wave: Maximum Temperature Departure from normal $\geq 6.5^{\circ}\text{C}$

(b). Based on Actual maximum temperature

Heat Wave: When actual maximum temperature $\geq 45^{\circ}\text{C}$.

Severe Heat Wave: When actual maximum temperature $\geq 47^{\circ}\text{C}$.

(c). Criteria for heat wave for coastal stations

When maximum temperature departure is $> 4.5^{\circ}\text{C}$ from normal. Heat Wave may be described provided maximum temperature $\geq 37^{\circ}\text{C}$.

Warm Night

When maximum temperature remains 40°C

Warm Night: When minimum temperature departure 4.5°C to 6.4°C .

Severe Warm Night: When minimum temperature departure $> 6.4^{\circ}\text{C}$.

Cold Wave

When minimum temperature of a station $\leq 10^{\circ}\text{C}$ for plains and $\leq 0^{\circ}\text{C}$ for hilly regions.

(a). Based on departure

Cold Wave: Minimum Temperature Departure from normal -4.5°C to -6.4°C .

Severe Cold Wave: Minimum Temperature Departure from normal $\leq -6.5^{\circ}\text{C}$

(b) Based on actual Minimum Temperature (for Plains only)

Cold Wave: When Minimum Temperature is $\leq 4.0^{\circ}\text{C}$

Severe Cold Wave: When Minimum Temperature is $\leq 2.0^{\circ}\text{C}$

(c) For Coastal Stations

When Minimum Temperature departure is $\leq -4.5^{\circ}\text{C}$ & actual Minimum Temperature is $\leq 15^{\circ}\text{C}$

Cold Day

When minimum temperature of a station $\leq 10^{\circ}\text{C}$ for plains and $\leq 0^{\circ}\text{C}$ for hilly regions

Based on departure

Cold Day: Maximum Temperature Departure from normal -4.5°C to -6.4°C .

Severe Cold Day: Maximum Temperature Departure from normal $\leq -6.5^{\circ}\text{C}$

Fog

Phenomenon of small droplets suspended in air and the horizontal visibility $< 1\text{km}$

Moderate Fog: When the visibility between 500-200 metres

Dense Fog: when the visibility between 50- 200 metres

Very Dense Fog: when the visibility < 50 metres

Thunderstorm

Sudden electrical discharges manifested by a flash of light (Lightning) and a sharp rumbling sound (thunder)

Dust/Sand Storm

An ensemble of particles of dust or sand energetically lifted to great heights by a strong and turbulent wind.

Frost

Ice deposits on ground

Air temperature $\leq 4^{\circ}\text{C}$ (over Plains)

Squall

A strong wind that rises suddenly, lasts for atleast 1 minute.

Moderate: Wind speed 52-61 kmph

Severe: Wind speed 62-67 kmph

Very Severe: Wind speed > 67 kmph

Sea State

Effect of various waves in the sea over specific area

Rough to very rough: Wind speed 41-62 kmph (22-33 knots) & Wave height 2.5-6 metre

High to very high: Wind speed 63-117 kmph (34-63 knots) & Wave height 6-14 metre

Phenomenal: Wind speed > 117 kmph (> 63 knots) & Wave height > 14 metre

Cyclone

Cyclonic Storm: Wind speed 62-87 kmph (34-47 knots)

Severe Cyclonic Storm: Wind speed 88-117 kmph (48-63 knots)

Very Severe Cyclonic Storm: Wind speed 118-165 kmph (64 - 89 knots)

Extremely Severe Cyclonic Storm: Wind speed 166-220 kmph (90 -119 knots)

Super Cyclone Storm: Wind speed > 220 kmph (> 119 knots)

* Red colour warning does not mean "Red Alert", Red colour warning means "Take Action".

Forecast and Warning for any day is valid from 0830 hours IST of day till 0830 hours IST of next day.

For more details, kindly visit <https://mausam.imd.gov.in> or contact: 011-2434-4599

(Service to the Nation since 1875)

Hot and Humid: When maximum temperatures remain 3°C above normal along with the above normal relative humidity.