



**Government of India
Ministry of Earth Sciences
India Meteorological Department**



Press Release

Date: 13th August, 2025

Time of Issue: 1330 hours IST

Subject: i) Low Pressure area over Westcentral & adjoining northwest Bay of Bengal off North Andhra Pradesh & South Odisha coasts.

ii) Heavy to very heavy rainfall likely over Madhya Pradesh, Vidarbha, Odisha, Chhattisgarh, Coastal Andhra Pradesh, Rayalaseema and Telangana during 13th to 17th; Karnataka during 13th-17th August with extremely heavy falls over Bihar, Coastal Andhra Pradesh & Yanam on 13th and Telangana on 13th & 14th August.

iii) Heavy to very heavy rainfall likely at a few places over Uttarakhand and at isolated places over Himachal Pradesh, Jammu during next 6-7 days. Isolated extremely heavy ($\geq 21\text{cm}$) likely over Uttarakhand on 13th August, 2025.

iv) Isolated heavy to very heavy rainfall likely over Sub-Himalayan West Bengal & Sikkim, Arunachal Pradesh, Assam & Meghalaya on 13th August.

Realised weather during past 24 hours till 0830 hours IST of today, the 13th August, 2025:

- ❖ **Extremely heavy rainfalls ($\geq 21\text{cm}$)** has been recorded at isolated places over Bihar, Sub-Himalayan West Bengal & Sikkim and Telangana.
- ❖ **Very heavy rainfall (12-20 cm)** has been recorded at isolated places over East Madhya Pradesh, Chhattisgarh, Arunachal Pradesh, Assam & Meghalaya, Coastal Andhra Pradesh & Yanam;
- ❖ **Heavy rainfall (7-11 cm)** at isolated places over Uttarakhand, East Uttar Pradesh, Nagaland, Manipur, Mizoram & Tripura, Gangetic West Bengal, Odisha, Vidarbha, Kerala.

For more details of realised weather, kindly refer [Annexure I](#).

i. Weather Systems, Forecast and Warnings (refer to [Annexure II & III](#)):

- ❖ The western end of monsoon trough at mean sea level runs north of its normal position and eastern end runs south of its normal position to the centre of the low pressure area over Westcentral & adjoining northwest Bay of Bengal off North Andhra Pradesh & South Odisha coasts.
- ❖ Under the influence of **upper air cyclonic circulation** over westcentral Bay of Bengal & neighbourhood, a low pressure area has formed over Westcentral & adjoining northwest Bay of Bengal off North Andhra Pradesh & South Odisha coasts at 0530 hrs IST of today, the 13th August, 2025. The low pressure area persists over the same region at 0830 hrs IST of today, the 13th August 2025. The associated upper air cyclonic circulation extends upto 7.6 km above mean sea level tilting southwards with height. It is likely to move west-northwestwards and become well marked during next 24 hours. It is likely to move across North Coastal Andhra Pradesh and south Odisha during next 48 hours.
- ❖ An **upper air cyclonic circulation** lies over Kutch & neighbourhood in lower tropospheric levels.
- ❖ An east-west **trough** runs from central parts of Bay of Bengal to northeast Arabian sea adjoining Kutch in lower & middle tropospheric levels tilting southward with height.
- ❖ An **upper air cyclonic circulation** lies over northeast Assam in lower tropospheric levels.
- ❖ An **upper air cyclonic circulation** lies over northwest Uttar Pradesh & adjoining Haryana in lower tropospheric levels.
- ❖ An **upper air cyclonic circulation** lies over East Uttar Pradesh in lower tropospheric levels.

- ❖ A **trough** runs from upper air cyclonic circulation over East Uttar Pradesh & neighbourhood to upper air cyclonic circulation associated with the low pressure area over Westcentral & adjoining northwest Bay of Bengal off North Andhra Pradesh and South Odisha coasts in lower tropospheric levels.

Under the influence of these systems, the following weather is likely:

Northwest India:

- ❖ **Extremely heavy rainfall** very likely at isolated places over Uttarakhand on 13th August.
- ❖ Isolated **heavy rainfall** likely over Jammu-Kashmir during 13th-18th; Himachal Pradesh, Uttarakhand during 13th-19th; Punjab during 14th-16th; Haryana, Chandigarh, West Uttar Pradesh during 13th-16th; East Uttar Pradesh on 14th; East Rajasthan during 14th-18th August with **very heavy rainfall** over Jammu- Kashmir on 14th & 15th; Himachal Pradesh on 13th & 14th; Uttarakhand during 13th-17th; West Uttar Pradesh during 13th -15th; East Uttar Pradesh on 13th August.
- ❖ Light/moderate rainfall at most/many places accompanied with thunderstorm & lightning likely over Jammu-Kashmir-Ladakh-Gilgit-Baltistan-Muzaffarabad & Uttarakhand during next 7 days.

Northeast India:

- ❖ Isolated **heavy rainfall** likely to continue over Arunachal Pradesh, Assam & Meghalaya during 13th-16th; Nagaland, Manipur, Mizoram & Tripura during 13th-17th August with **very heavy rainfall** over Arunachal Pradesh on 13th; Assam & Meghalaya on 13th & 16th August.
- ❖ Light/moderate rainfall at many places accompanied with thunderstorm & lightning likely during next 4 days.

South Peninsular India:

- ❖ **Extremely heavy rainfall** very likely at isolated places over Coastal Andhra Pradesh & Yanam on 13th; Telangana on 13th & 14th August.
- ❖ Isolated **heavy rainfall** likely over Coastal Karnataka & North Interior Karnataka during 13th- 19th; South Interior Karnataka during 13th-17th; Rayalaseema on 14th; Coastal Andhra Pradesh & Yanam, Telangana during 13th-19th; Tamil Nadu, Puducherry & Karaikal on 13th, Kerala during 13th-15th August with isolated **very heavy rainfall over Rayalaseema on 13th; Coastal Andhra Pradesh & Yanam on 14th; Telangana during 15th-17th; Coastal Karnataka on 18th & 19th August.**
- ❖ Strong surface winds (speed reaching 40-50 kmph) very likely over South Peninsular India during next 2 days.
- ❖ Light to moderate rainfall at most/many places accompanied with thunderstorm & lightning likely over Rayalaseema, Coastal Andhra Pradesh & Yanam and Telangana during next 5 days.

East & Central India:

- ❖ **Extremely heavy rainfall** very likely at isolated places over Bihar on 13th August.
- ❖ Isolated **heavy rainfall** likely over Madhya Pradesh, Vidarbha & Chhattisgarh during 13th-19th; Gangetic West Bengal on 13th; Sub-Himalayan West Bengal & Sikkim on 14th & during 17th-19th; Bihar on 14th & 15th; Odisha during 13th-17th August **with isolated very heavy rainfall over West Madhya Pradesh on 13th, 15th & 16th; East Madhya Pradesh & Odisha on 13th & 14th; Vidarbha on 13th, 14th, 17th, 18th; Chhattisgarh during 13th-17th; Sub-Himalayan West Bengal & Sikkim on 13th August.**
- ❖ Light to moderate rainfall at most/many places accompanied with thunderstorm & lightning likely over the region during next 7 days.

West India:

- ❖ Isolated **heavy rainfall** likely over Madhya Maharashtra on 13th; Konkan & Goa during 13th-15th; Marathawada on 14th, 15th & 18th; Gujarat Region during 14th-19th; Saurashtra & Kutch during 17th-19th August **with isolated very heavy rainfall over Marathawada on 13th; Konkan & Goa, ghat areas of Madhya Maharashtra during 16th-19th August.**
- ❖ Light to moderate rainfall at many/some places very likely over the region during next 5 days.

Fishermen warning:

Fishermen are advised to avoid venturing into the following from 13th August to 18th August 2025 to the following Areas:

Arabian Sea Most parts of westcentral Arabian Sea during 13th to 18th August, some parts of southwest Arabian sea during 13th to 16th August, east central Arabian sea during 15th to 18th August, northwest Arabian Sea during 13th to 15th August, over few parts of Comorin areas during 13th to 13th August, along and off north Gujarat coast

& adjoining northeast Arabian Sea on 13th August; along and off Konkan & Goa during 13th to 17th August, along & off Karnataka, Kerala and adjoining Lakshadweep areas during 13th to 16th August; along and off the Somalia coast Yemen & Oman coast and adjoining sea areas during 13th to 18th August.

Bay of Bengal:

Along and off Sri Lanka coast during 13th to 18th August, over most parts of south Bay of Bengal during 13th to 16th August, over most parts of central Bay of Bengal during 13th to 17th August, along and off Andhra Pradesh coast, Odisha coasts during 15th to 17th August north Andhra Pradesh coasts during 13th to 15th August; and over few parts of north Bay of Bengal during 13th to 17th August; over Gulf of Mannar and along and off south Tamil Nadu coast during 13th to 18th August; over Andaman Sea during 13th to 16th August.

ii. Weather conditions and forecast over Delhi/NCR during 13th to 16th August, 2025 (Annexure IV)

For more details, kindly refer National Weather Bulletin:

https://mausam.imd.gov.in/responsive/all_india_forecast_bulletin.php

For District wise warnings refer: <https://mausam.imd.gov.in/responsive/districtWiseWarningGIS.php>

For Fishermen warning refer <https://rsmcnewdelhi.imd.gov.in/fishermen-warning.php>

ANNEXURE I

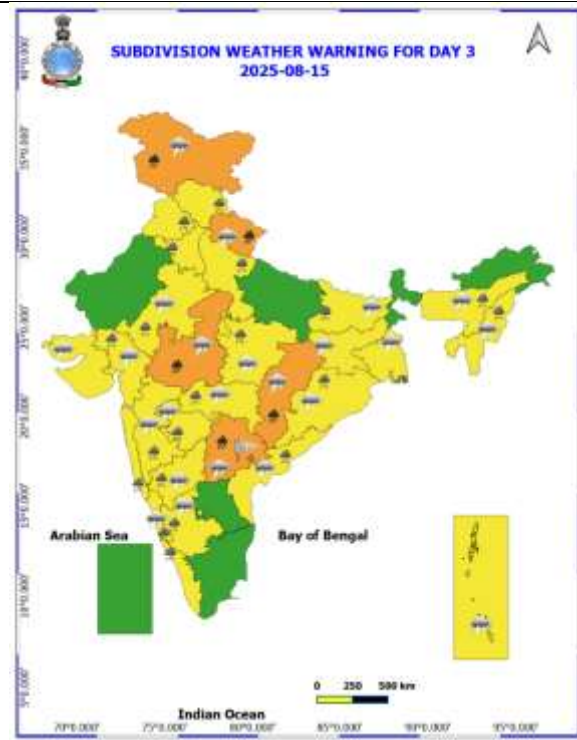
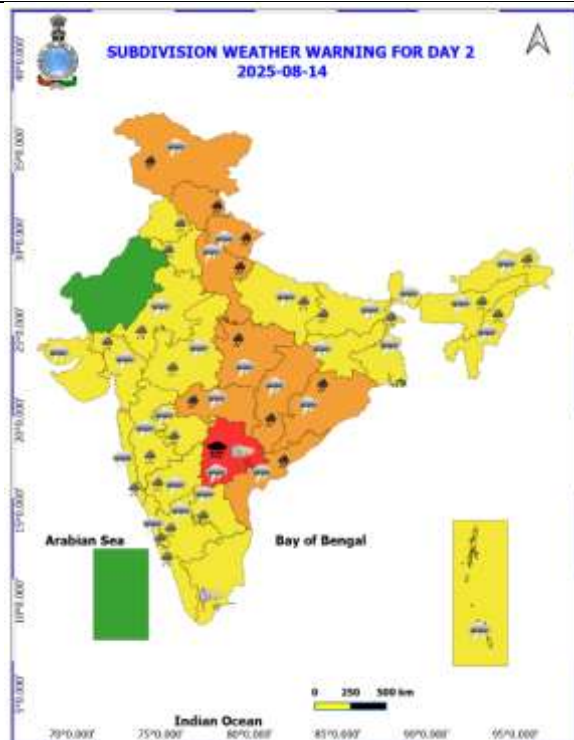
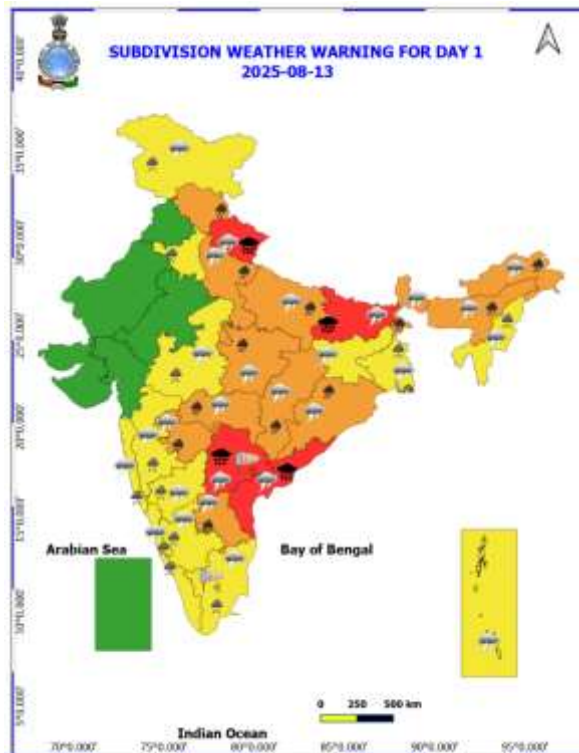
Rainfall recorded (in cm) during past 24 hours till 0830 hours IST of today, the 13th August:

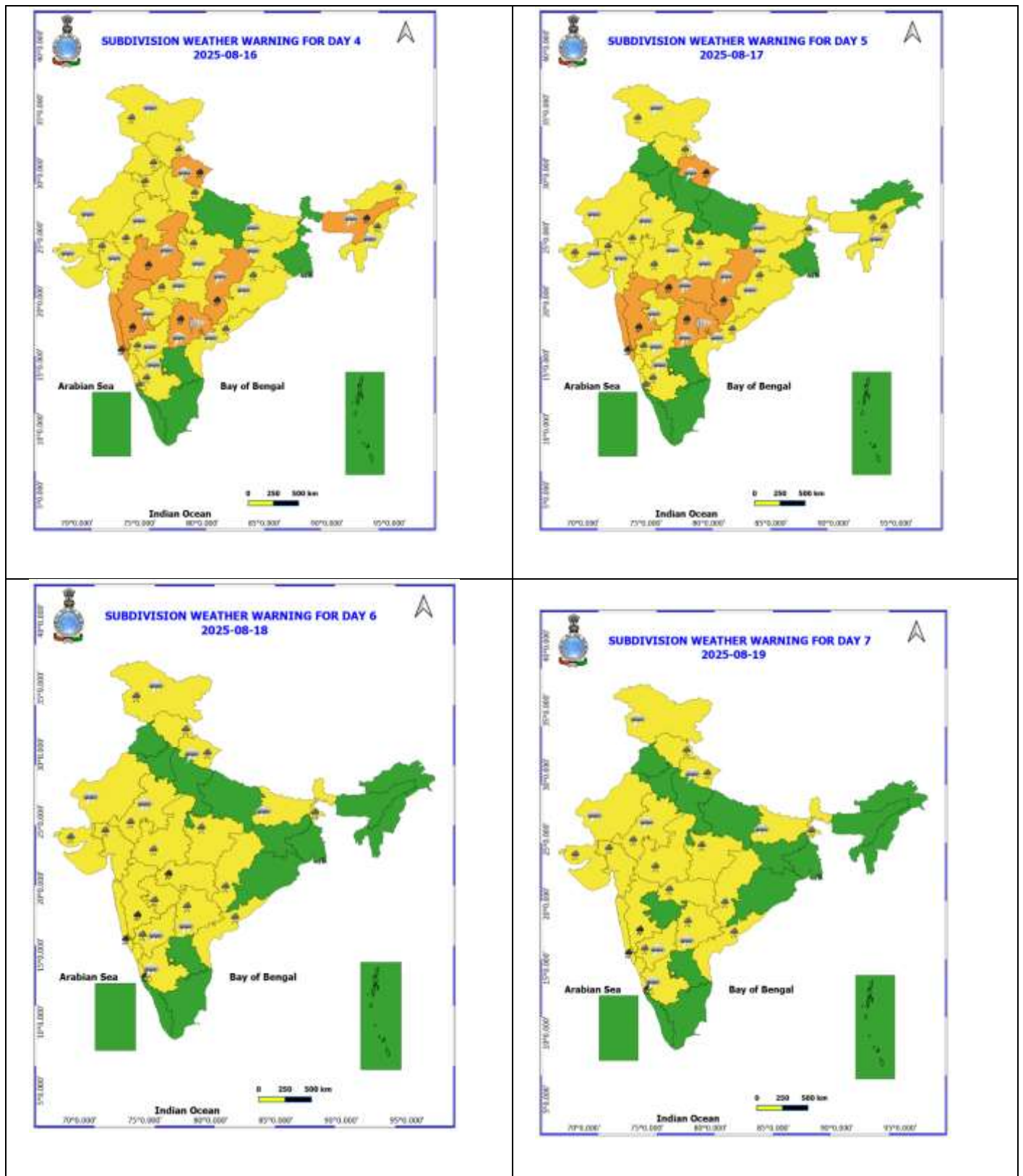
- ❖ **Sub-Himalayan West Bengal & Sikkim:** Newlands Tea Garden (dist Alipurduar) 36, Kumargram Tea Estate (dist Alipurduar) 33, Sankos Tea Estate (dist Alipurduar) 31, Sankosh (dist Cooch Behar) 25, Kumargram (dist Alipurduar) 23, Raidak Tea Estate (dist Alipurduar) 21, Alipurduar (pto) (dist Alipurduar) 21, Chepan (dist Alipurduar) 19, Saraswatipur Tea Estate (dist Jalpaiguri) 18, Majherdabri Tea Garden (dist Alipurduar) 18, Amfu Pundibari (dist Cooch Behar) 18, Falakata (dist Alipurduar) 17, Bhatkawa Tea Estate (dist Jalpaiguri) 17, Dima Tea Estate (dist Alipurduar) 17, Patkapara Tea Estate (dist Alipurduar) 16, Dalgaon Tea Estate (dist Alipurduar) 16, Singimari (dist Cooch Behar) 16, Toorsa Tea Garden (dist Alipurduar) 16, Mathabhanga (dist Cooch Behar) 15, Siliguri Pto (dist Darjeeling) 14, Buxaduar (dist Alipurduar) 14, Suryasen Mahavidyalaya (dist Darjeeling) 13, Aryaman Tea Estate (dist Alipurduar) 12, Gopalpur Tea Estate (dist Alipurduar) 12, Hasimara (dist Alipurduar) 12, Barobhisha (dist Alipurduar) 12, Champasari (dist Darjeeling) 12, Subhasini Tea Estate (dist Alipurduar) 11, Dhupguri (dist Jalpaiguri) 11, Cooch Behar (dist Cooch Behar) 11, Gajoldoba (dist Jalpaiguri) 10, Nh31 Bridge (dist Jalpaiguri) 10, Namthang (dist Namchi) 9, Raiganj (pto) (dist North Dinajpur) 9, Mekhliganj (dist Cooch Behar) 9, Sevoke (dist Darjeeling) 9, Bagdogra Iaf (dist Darjeeling) 8, Bagrakote (dist Jalpaiguri) 8, Beech Tea Garden (dist Alipurduar) 8, Washabari Tea Estate (dist Jalpaiguri) 8, Dharala Valley Tea Esta (dist Jalpaiguri) 7, Jalpaiguri (dist Jalpaiguri) 7, Leesh River Tea Garden (dist Jalpaiguri) 7;
- ❖ **Telangana:** Bheemini (dist Mancheria) 24, Tandoorncl (dist Mancheria) 17, Chityal (dist J.Bhupalpally) 17, Belampalle (dist Mancheria) 17, Regonda (dist J. Bhupalpally) 14, Kagaznagar (dist Kumaram Bheem) 13, Vemanapalle (dist Mancheria) 13, Srirampur (dist Peddapalle) 12, Dahegaon (dist Kumaram Bheem) 12, Venkatapuram (dist Mulugu) 12, Asifabad (dist Kumaram Bheem) 11, Kotapalle (dist Mancheria) 11, Asifabad (arg) (dist Kumaram Bheem) 11, Thimmapur (dist Karimnagar) 10, Tadwai Mlg (dist Mulugu) 9, Kunaram (arg) (dist Peddapalle) 9, Kerameri (dist Kumaram Bheem) 9, Karimnagar (dist Karimnagar) 9, Ghanpurjskb (dist J.Bhupalpally) 9, Wankdi (dist Kumaram Bheem) 8, Jammikunta (dist Karimnagar) 8, Manthani (dist Peddapalle) 8, Sultanabad (dist Peddapalle) 8, Ramgundam (dist Peddapalle) 8, Kasipet (dist Mancheria) 8, Bhupalpalle (dist J. Bhupalpally) 8, Neredcherla (dist Suryapet) 7, Bejjanki (dist Siddipet) 7, Sirpur (t) (dist Kumaram Bheem) 7, Utnur (dist Adilabad) 7, Mutharam Mahadevpur (dist J. Bhupalpally) 7, Bazarhathnoor (dist Adilabad) 7, Jainoor (dist Kumaram Bheem) 7, Parkal (dist Hanumakonda) 7, Chigurumamidy (dist Karimnagar) 7, Velagatoor (dist Jagtial) 7, Mattampally (dist Suryapet) 7, Luxettipet (dist Mancheria) 7, Mogullapalle (dist J.Bhupalpally) 7, Elagaid (dist Peddapalle) 7;
- ❖ **Bihar:** Khagadia (dist Khagaria) 21; Mansi (dist Khagaria) 19; Parsa (dist Saran) 16; Patarghat (dist Saharsa) 14; Taibpur (dist Kishanganj), Pothia (dist Kishanganj) 13 Each; Thakurganj (dist Kishanganj), Raniganj (dist Araria), Sattar Kataiya (dist Saharsa) 12 Each; Jokihat (dist Araria) 11; Chargharia (dist Kishanganj), Kadwa (dist Katihar), Bahargama (dist Araria), Dagarua (dist Purnea), Baisa (dist Purnea)

- 10 Each; Bhawanipur (dist Purnea) 9; Tribeni/Balmikinagar (dist West Champaran), Gogri (dist Khagaria), Indrapuri (dist Rohtas), Kumarkhand (dist Madhepura), Kaler (dist Arwal), Bachwara (dist Begusarai), Barsoi (dist Katihar), Beldaur (dist Khagaria), Dighwara (dist Saran), Ghanharia (dist Madhepura), Tilouthu (dist Rohtas) 8 Each; Daudnagar (dist Aurangabad), Sikti (dist Araria), Singheshwar (dist Madhepura), Kusheswarstan (dist Darbhanga), Kursakanta (dist Araria), Ghailadh (dist Madhepura), Athmalgola (dist Patna), Kalyanpur (dist East Champaran), Dhamdaha (dist Purnea), Barahar Kothi (dist Purnea), Baisi (dist Purnea), Lalganj (dist Vaishali), Mohania (dist Bhabua) 7 Each;
- ❖ **Coastal Andhra Pradesh & Yanam:** Mangalagiri (dist Guntur) 19, Tenali (dist Guntur) 18, Karamchedu (dist Bapatla) 15, Amaravati (dist Guntur) 14, Avanigada (dist Krishna) 14, Bapatla (dist Bapatla) 13, Guntur (dist Guntur) 13, Atchampet (dist Palnadu) 13, Gudivada (dist Krishna) 11, Piduguralla (dist Palnadu) 7, Jangamaheswarapuram (dist Palnadu) 7, Kunavaram (dist Alluri Sitharamaraju) 7, Repalle (dist Bapatla) 7, Sattenapalle (dist Palnadu) 7;
 - ❖ **Arunachal Pradesh:** Naharlagun_ Aws (dist Papumpara) 13, Itanagar (dist Papumpara) 12, Naharlagun (dist Papumpara) 10, Ziro (dist Lower Subansiri) 8, Daparijo (dist Upper Subansiri) 8;
 - ❖ **Assam & Meghalaya:** Nalbari(Barkhetri Aws) (dist Nalbari), Ranganadi Nt Xing (dist Lakhimpur), Iasst Kamrup ARG (dist Kamrup Metropolitan) 13 Each; Khowang (dist Dibrugarh), Majuli (dist Majuli) 12 Each; Nalbari/Pagladia (dist Nalbari), N.lakhimpur/Lilabari (dist Lakhimpur) 11 Each; Bihpuria AWS (dist Lakhimpur), Drf (dist Baksa), Chauldhowaghat (dist Lakhimpur), Tamulpur ARG (dist Baksa) 10 Each; Goibargaon (dist Baksa), Moranhat (dist Dibrugarh), Guwahati ARG (dist Kamrup Metropolitan), Tangla ARG (dist Udalguri), Chouldhuwaghat ARG (dist Lakhimpur), Mazbat ARG (dist Udalguri), Aie Nh Xing (dist Bongaigaon) 9 Each; Goalpara PTO (dist Goalpara), Badatighat (dist Lakhimpur), Guwahati AP (dist Kamrup Metropolitan), Tamulpur (dist Tamulpur), Sualkuchi ARG (dist Kamrup (rural)), Guwahati City AWS (dist Kamrup Metropolitan), Dhekiajuli (dist Sonitpur), Panbari (dist Chirang) 8 Each; Majbat (dist Udalguri), Jia Bharali N T Xing (dist Sonitpur), Numaligarh (dist Golaghat), Guwahati AWS (dist Kamrup Metropolitan), Iit Guwahati ARG (dist Kamrup (rural)), Hangrabari ARG (dist Kamrup Metropolitan), Tihu ARG (dist Nalbari), Bajali AWS (dist Bajali), Tezpur (dist Sonitpur) 7 Each;
 - ❖ **East Madhya Pradesh:** Umaria-aws (dist Umaria) 12, Badwara (dist Katni) 12, Karkeli (dist Umaria) 11, Dindori-aws (dist Dindori) 9, Bilhari (dist Katni) 8;
 - ❖ **Chhattisgarh:** Raigarh (dist Raigarh) 12, Pusaur (dist Raigarh) 9, Bastanar (dist Bastar) 8;
 - ❖ **Odisha:** Dhenkanal Pto (dist Dhenkanal) 10, Bandhugaon (dist Koraput) 8, Jeypore (dist Koraput) 8, Kantamal (dist Boudhgarh) 8, Koraput (dist Koraput) 8, Tarva (dist Sonepur) 8, Sinapali (dist Nawapara) 7, Dhenkanal (dist Dhenkanal) 7, Papadahandi (dist Nawarangpur) 7;
 - ❖ **Vidarbha:** Ballarpur (dist Chandrapur) 10; Bhamragad (dist Gadchiroli), Joiti (dist Chandrapur) 8 Each; Korpana (dist Chandrapur), Chandrapur (dist Chandrapur) 7 Each;
 - ❖ **Nagaland, Manipur, Mizoram & Tripura:** Sabroom (dist South Tripura) 9, Sabroom Aws (dist South Tripura) 8, Kamalpur (dist Dhalai) 7;
 - ❖ **East Uttar Pradesh:** Uska Bazar Fmo (dist Siddharth Nagar) 8, Regoli (dist Gorakhpur) 7, Ghazipur Obsy (dist Ghazipur) 7;
 - ❖ **Gangetic West Bengal:** Amfu Kharagpur (dist West Midnapore) 8;
 - ❖ **Kerala:** Piravam (dist Ernakulam) 7;
 - ❖ **Uttarakhand:** Haripur (dist Dehradun) 7

Table-1								
7 Days Rainfall Forecast								
S.No.	Subdivision	13- Aug	14- Aug	15- Aug	16- Aug	17- Aug	18- Aug	19- Aug
		Day 1	Day 2	Day 3	Day 4	Day 5	Day 6	Day 7
1	ANDAMAN & NICOBAR ISLANDS	WS	WS	WS	WS	FWS	FWS	FWS
2	ARUNACHAL PRADESH	WS	FWS	SCT	SCT	SCT	SCT	FWS
3	ASSAM & MEHGHALAYA	WS	FWS	SCT	FWS	FWS	FWS	FWS
4	NAGALAND, MANIPUR, MIZORAM AND TRIPURA	WS	WS	FWS	FWS	FWS	FWS	FWS
5	SUB HIMALAYAN WEST BENGAL & SIKKIM	WS	WS	FWS	FWS	WS	WS	WS
6	GANGETIC WEST BENGAL	FWS	FWS	FWS	SCT	FWS	FWS	FWS
7	ODISHA	WS	WS	FWS	FWS	FWS	FWS	FWS
8	JHARKHAND	FWS	FWS	SCT	SCT	FWS	FWS	FWS
9	BIHAR	WS	FWS	SCT	SCT	SCT	SCT	SCT
10	EAST UTTAR PRADESH	WS	SCT	SCT	ISOL	ISOL	SCT	SCT
11	WEST UTTAR PRADESH	FWS	WS	FWS	FWS	SCT	SCT	SCT
12	UTTARAKHAND	WS	WS	FWS	WS	WS	FWS	FWS
13	HARYANA, CHANDIGARH & DELHI	FWS	FWS	FWS	SCT	SCT	SCT	SCT
14	PUNJAB	SCT	FWS	FWS	SCT	SCT	SCT	SCT
15	HIMACHAL PRADESH	WS	WS	WS	FWS	FWS	WS	FWS
16	JAMMU AND KASHMIR AND LADAKH	FWS	WS	WS	SCT	SCT	FWS	FWS
17	WEST RAJASTHAN	ISOL	ISOL	ISOL	SCT	SCT	FWS	SCT
18	EAST RAJASTHAN	ISOL	SCT	SCT	FWS	FWS	FWS	SCT
19	WEST MADHYA PRADESH	FWS	WS	WS	WS	WS	FWS	FWS
20	EAST MADHYA PRADESH	FWS	WS	WS	WS	WS	WS	WS
21	GUJRAT REGION	SCT	FWS	WS	WS	WS	WS	WS
22	SAURASHTRA & KUTCH	SCT	SCT	SCT	FWS	FWS	WS	WS
23	KONKAN & GOA	WS	WS	WS	WS	WS	WS	WS
24	MADHYA MAHARASHTRA	SCT	SCT	SCT	SCT	FWS	FWS	FWS
25	MARATHWADA	FWS	FWS	SCT	SCT	FWS	FWS	FWS
26	VIDARBHA	WS	WS	WS	WS	WS	WS	WS
27	CHHATTISGARH	FWS	WS	WS	WS	WS	WS	WS
28	COASTAL ANDHRA PRADESH	WS	FWS	FWS	SCT	FWS	FWS	FWS
29	TELANGANA	WS	WS	WS	WS	WS	WS	WS
30	RAYALASEEMA	WS	FWS	SCT	SCT	SCT	FWS	SCT
31	TAMILNADU & PUDUCHERRY	ISOL	ISOL	ISOL	ISOL	ISOL	ISOL	ISOL
32	COSTAL KARNATAKA	WS	WS	WS	WS	WS	WS	WS
33	NORTH INTERIOR KARNATAKA	WS	WS	WS	WS	WS	FWS	FWS
34	SOUTH INTERIOR KARNATAKA	WS	WS	FWS	FWS	FWS	FWS	SCT
35	KERALA AND MAHE	WS	WS	WS	WS	WS	WS	WS
36	LAKSHADWEEP	WS	WS	WS	FWS	FWS	FWS	FWS

- As the lead period increases forecast accuracy decrease.





- Action may be taken based on ORANGE AND REDCOLOUR warnings.
- Vulnerable regions likely urban and hilly areas action may be initiated for heavy rainfall warning.
- As the lead period increases forecast accuracy decreases.

Detailed districtwise Multi Hazard weather warning for next five days available at <https://mausam.imd.gov.in/responsive/districtWiseWarningGIS.php>

Weather forecast over Delhi/NCR during 13th August to 16th August 2025**Past Weather:**

There has been appreciable rise in minimum temperatures by 1-3°C and no large change in maximum temperatures in past 24 hours over Delhi. The minimum temperatures are in the range of 25-27°C and maximum temperatures were in the range of 32-34°C. The minimum temperatures are near normal and maximum temperatures were near normal over Delhi. Westerly winds prevailed with wind speed upto 15 kmph in past 24 hours over Delhi. Maximum rainfall of 4.5 mm has been recorded at Najafgarh during the past 24 hrs over Delhi. Generally cloudy sky conditions with a wind speed of upto 10-15 kmph from the southwest direction prevailed over the region in the forenoon today.

Weather Forecast:

13.08.2025: Generally cloudy sky. Possibility of one or two spells of very light to light rain/thundershowers with higher probability during evening/night. The maximum temperatures over Delhi are likely to be in the range of 32 to 34°C. The maximum temperature will be near normal. The predominant surface wind will likely to be from the southwest direction with a wind speed of 05-10 kmph during afternoon hours. The wind speed remains same upto 05-10 kmph from the southeast direction during the evening and night.

14.08.2025: Generally cloudy sky. Possibility of a few spells of light to moderate rain/thundershowers with higher probability during morning hours/forenoon. The maximum and minimum temperatures over Delhi are likely to be in the range of 31 to 33°C and 23 to 25 °C respectively. The minimum temperature will be below normal up to 1 to 3°C and the maximum temperature will be below normal upto 0 to 2°C. The predominant surface wind will likely to be from the southeast direction with a wind speed of upto 05-10 kmph during morning hours and afternoon hours. The wind speed will increase to 10-15 kmph from the northeast direction during evening and night.

15.08.2025: Generally cloudy sky. Possibility of a few spells of light to moderate rain/thundershowers with higher probability during morning hours/forenoon. The maximum and minimum temperatures over Delhi are likely to be in the range of 31 to 33°C and 23 to 25 °C respectively. The minimum temperature will be below normal up to 1 to 3°C and the maximum temperature will be below normal upto 0 to 2°C. The predominant surface wind will likely to be from the east direction with a wind speed of upto 05-10 kmph during morning hours and afternoon hours. The wind speed will increase to 10-15 kmph from the east direction during evening and night.

16.08.2025: Generally cloudy sky. Possibility of very light to light rain/thundershowers. The maximum and minimum temperatures over Delhi are likely to be in the range of 32 to 34°C and 22 to 24°C respectively. The minimum temperature will be below normal up to 3 to 5°C and the maximum temperature will be near normal. The predominant surface wind will likely to be from the southeast direction with a wind speed of 10-15 kmph during morning hours. The wind speed will decrease upto 05-10 kmph from the southeast direction in the afternoon. The wind speed will increase to 10-15 kmph from the southeast direction during evening and night.

Impact & Action Suggested due to

- ❖ **Extremely heavy rainfall** at isolated places over Uttarakhand, Bihar, Coastal Andhra Pradesh & Yanam on 13th; Telangana on 13th & 14th August.
- ❖ **Very heavy rainfall** over Jammu- Kashmir on 14th & 15th; Himachal Pradesh, East Madhya Pradesh, Odisha on 13th & 14th; Uttarakhand during 13th-17th; West Uttar Pradesh during 13th -15th; East Uttar Pradesh, Arunachal Pradesh, Rayalaseema, Sub-Himalayan West Bengal & Sikkim, Marathawada on 13th; Assam & Meghalaya on 13th & 16th; Coastal Andhra Pradesh & Yanam on 14th; Telangana during 15th-17th; Coastal Karnataka on 18th & 19th; West Madhya Pradesh on 13th, 15th & 16th; Vidarbha on 13th, 14th, 17th, 18th; Chhattisgarh during 13th-17th; Konkan & Goa, ghat areas of Madhya Maharashtra during 16th-19th August.

Impact Expected

- Localized Flooding of roads, water logging in low lying areas and closure of underpasses mainly in urban areas of the above region.
- Occasional reduction in visibility due to heavy rainfall.
- Disruption of traffic in major cities due to water logging in roads leading to increased travel time.
- Minor damage to kutcha roads.
- Possibilities of damage to vulnerable structure.
- Localized Landslides/Mudslides/landslips/mudslips/landsinks/mudsinks.
- Damage to horticulture and standing crops in some areas due to inundation.
- It may lead to riverine flooding in some river catchments (for riverine flooding please visit Web page of CWC)

Action Suggested

- Check for traffic congestion on your route before leaving for your destination.
- Follow any traffic advisories that are issued in this regard.
- Avoid going to areas that face the water logging problems often.
- Avoid staying in vulnerable structure.

Agromet advisories for likely impact of Heavy / Heavy to Very Heavy / Extremely Heavy Rainfall

- In **Telangana**, drain out excess water from fields of rice, cotton, maize, soybean, pigeon pea, turmeric and vegetables in **Northern Telangana Zone** and rice, cotton, soybean, vegetables and vegetable nurseries in **Southern Telangana Zone**.
- In **Andhra Pradesh**, provide adequate drainage in the fields of rice, maize, groundnut, cotton, black gram, green gram, pigeon pea and sesame in **Krishna Godavari Zone** and cotton, rice, pigeon pea, groundnut, castor, maize and vegetables in **Scarce Rainfall Zone**.
- In **Sub-Himalayan West Bengal**, make provision to drain out excess water from rice, chilli and gourds fields and cover the chilli seedlings with plastic to protect them from heavy rains in **Terai Zone**.
- In **Bihar**, make provisions to drain out excess water from fields of maize, vegetables and other standing crops in **North West Alluvial Plain Zone**. In **North East Alluvial Zone**, maintain proper drainage in maize fields. Do not allow rain water to accumulate in the fields of vegetables, ragi, kodo, sava, china, etc. Build scaffolding for creeper vegetables.
- In **Odisha**, ensure proper drainage in fields of rice (especially in lowland and medium land), maize and vegetables to avoid water stagnation in **Eastern Ghat High Land Zone** and **South Eastern Ghat Zone**.
- In **Jammu and Kashmir**, do not allow water to stagnate in fields of maize, pulses, cowpea, bajra, fodder crops and vegetables in **Sub Tropical Zone**. Maintain proper drainage facility in maize, pulses and vegetable fields to avoid waterlogging in **Intermediate Zone**. In **Valley Temperate Zone**, provide proper staking to bottle gourd, cucumber, bitter gourd etc. vines and indeterminate tomatoes. Make proper drainage channels in fields of maize for removal of excess rain water.
- In **Himachal Pradesh**, maintain proper drainage channels in ginger, turmeric and maize fields in **Mid Hills Sub Humid Zone** and rice, maize and vegetable fields in **Sub Montane and Low Hills Sub Tropical Zone**. Undertake harvesting of matured tomato, capsicum and brinjal fruits in **Mid Hills Sub Humid Zone** and ripened tomatoes in **High Hills Sub Temperate Wet Zone**.
- In **Uttarakhand**, maintain 5-7 cm water level in rice fields by removing excess water and maintain proper drainage channels in fields of sugarcane, maize, green gram and black gram in **Bhabar and Tarai Zone**. In **Hill Zone**, keep the bunds of the rice fields clean by removing weeds. Maintain proper drainage in soybean,

maize, pulses, finger millet, ginger and vegetable fields and fruit orchards. In **Sub Humid Sub Tropic Zone**, ensure proper drainage in fields of barnyard millet, finger millet, green gram and black gram.

- In **Uttar Pradesh**, make necessary arrangements for drainage of excess water from the fields of pigeon pea, chilli and onion in **Bundelkhand Zone**. In **Western Plain Zone**, postpone sowing of pigeon pea, maize, green gram and black gram till cessation of heavy rains. Ensure proper drainage in all pulses, vegetables and other crops. Make scaffolding in bottle gourd vegetables.
- In **Madhya Pradesh**, provide adequate drainage in the fields of maize, soybean, black gram, cotton, and pigeon pea in **Vindhyan Plateau Zone**; maize, soybean, cotton, sugarcane and vegetables in **Satpura Plateau Zone**; rice, soybean, maize, sugarcane and vegetables in **Central Narmada Valley Zone** and soybean, pigeon pea, cotton and vegetables in **Nimar Valley Zone**.
- In **Chhattisgarh**, make arrangements to drain out excess water from fields of *kharif* maize, rice, minor millets, pulses and vegetables in **Bastar Plateau Zone** and rice, soybean, pigeon pea, green gram, black gram, groundnut, maize, sugarcane and vegetables in **Plain Zone**.
- In **Assam**, harvest matured vegetables and avoid seed sowing of sesame, green gram and pigeon pea during heavy rainfall in **Lower Brahmaputra Valley Zone**. To prevent waterlogging, ensure proper drainage in *Sali* rice, green gram and pigeon pea fields and banana orchards in **Lower Brahmaputra Valley Zone**; *Sali* rice and sugarcane fields in **North Bank Plain Zone** and *Sali* rice fields in **Upper Brahmaputra Valley Zone**.
- In **Meghalaya**, avoid sowing of French beans during heavy rains. Ensure proper drainage in rice, maize, turmeric, ginger, pumpkin, chilli, cow pea, okra and bitter gourd fields to prevent waterlogging. Provide staking/support to tall and fragile crops like banana, papaya, bottle gourd etc. to prevent lodging.
- In **Arunachal Pradesh**, ensure proper drainage in rice, maize, finger millet, soybean, vegetables, and fruit orchards to avoid waterlogging. Provide strong support to fruit-bearing plants to prevent them from bending or breaking during heavy rains.

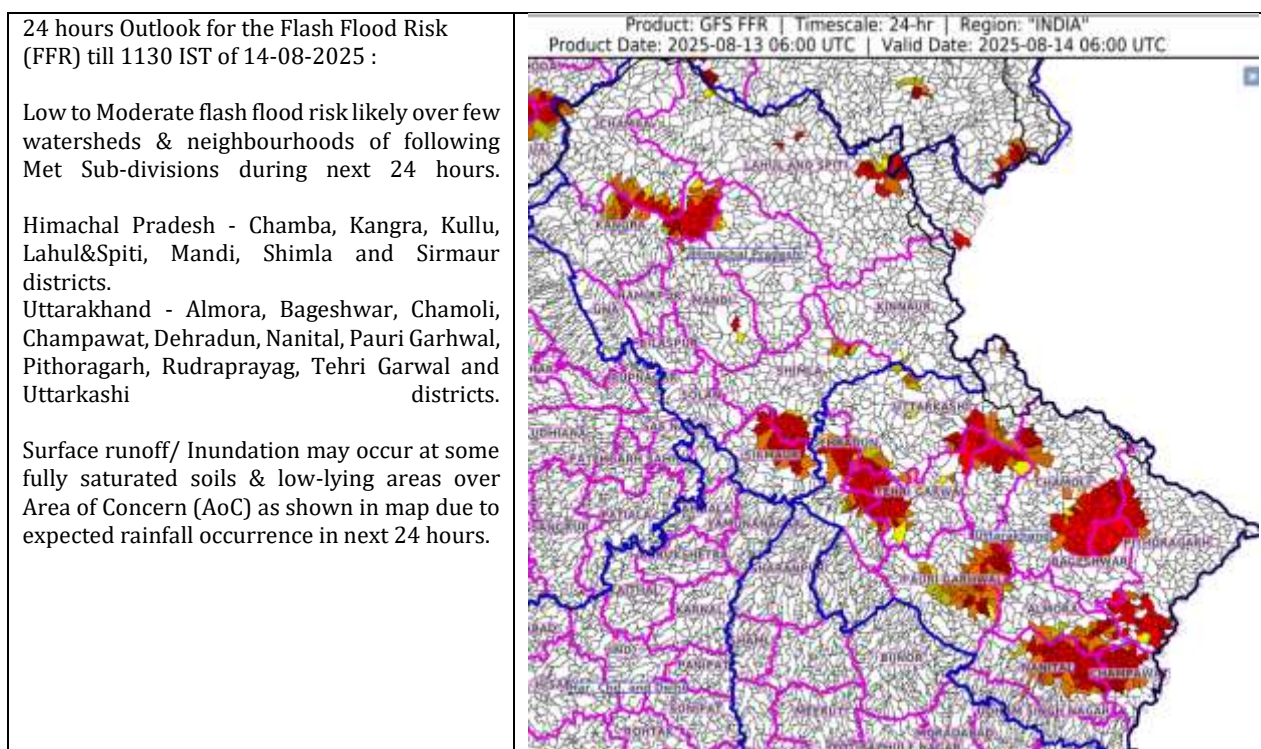
Livestock / Fishery

- Keep the animals inside the shed during heavy rainfall and provide them balanced feed.
- Store feed and fodder in a safe place to prevent spoilage.
- Construct an outlet with proper netting around the ponds to drain out excess water, thereby preventing fish from escaping in case of overflow.

Agromet advisories for likely impact of Thunderstorm / Gusty Winds / Squally Winds

- Provide mechanical support to horticultural crops and staking or support to vegetables and young fruit plants / fruit-bearing plants to avoid lodging due to strong winds.

Flash flood guidance:



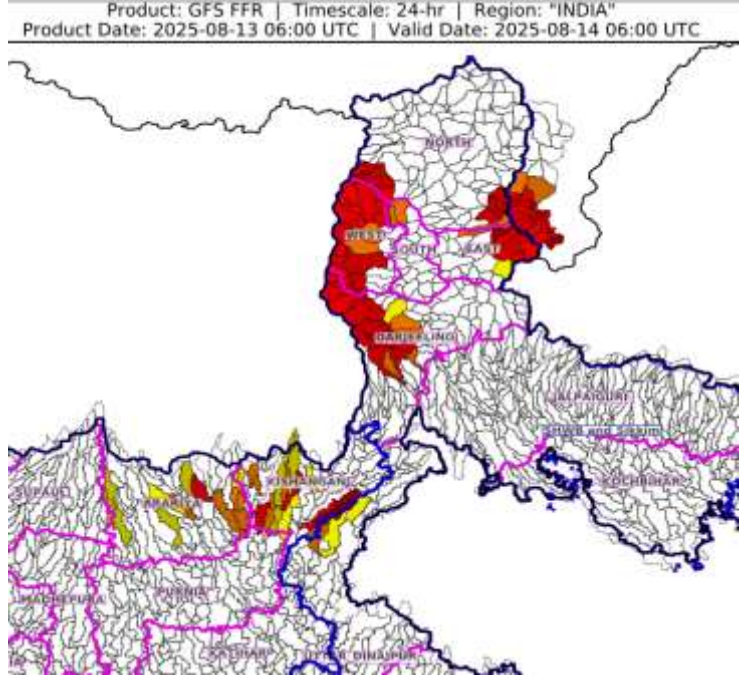
24 hours Outlook for the Flash Flood Risk (FFR) till 1130 IST of 14-08-2025 :

Low to Moderate flash flood risk likely over few watersheds & neighbourhoods of following Met Sub-divisions during next 24 hours.

Bihar - Arariya and Kishanganj districts.

Sub-Himalayan West Bengal & Sikkim - East Sikkim, North Sikkim, West Sikkim, Darjeeling and Uttar_Dinajpur districts.

Surface runoff/ Inundation may occur at some fully saturated soils & low-lying areas over Area of Concern (AoC) as shown in map due to expected rainfall occurrence in next 24 hours.



24 hours Outlook for the Flash Flood Risk (FFR) till 1130 IST of 14-08-2025 :

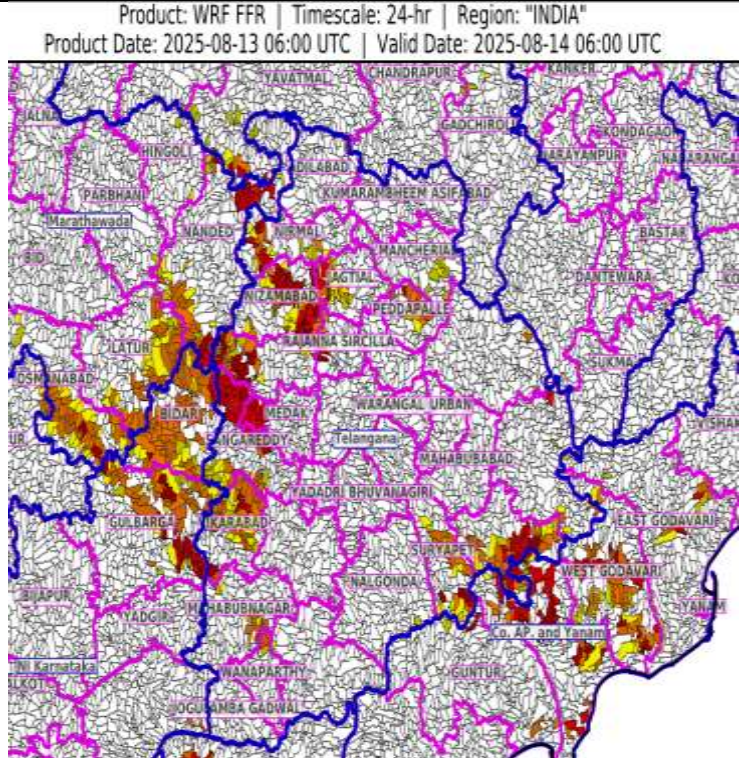
Low to Moderate flash flood risk likely over few watersheds & neighbourhoods of following Met Sub-divisions during next 24 hours.

Coastal Andhra Pradesh & Yanam - East Godavari, Guntur, Krishna and West Godavari districts.

North Interior Karnataka - Bidar and Gulbarga districts.

Telangana - Jagtial, Kamareddy, Khammam, Mahabubnagar, Mancheria, Medak, Nirmal, Nizamabad, Peddapalle, Rajanna Sircilla, Sangareddy, Suryapet and Vikarabad districts. Marathawada - Latur, Nanded and Osmanabad districts.

Surface runoff/ Inundation may occur at some fully saturated soils & low-lying areas over Area of Concern (AoC) as shown in map due to expected rainfall occurrence in next 24 hours.



Legends & abbreviations:

- ❖ **Heavy Rain:**64.5-115.5mm; **Very Heavy Rain:**115.6-204.4mm; **Extremely Heavy Rain:** >204.4mm.
- ❖ **Obsy:** Observatory; Automatic Weather Station; **ARG:** Automatic Rain Gauge; **dist:** District; **NH:** National Highway; **KVK:** Krishi Vigyan Kendra; **DVC:** Damodar Valley Corporation; **PTO:** Part Time Office, **Aero:** Aerodrome, **IAF:** Indian Air Force.
- ❖ **Region wise classification of meteorological Sub-Divisions:**
 - **Northwest India:** Western Himalayan Region (Jammu-Kashmir-Ladakh-Gilgit-Baltistan-Muzaffarabad, Himachal Pradesh and Uttarakhand); Punjab, Haryana-Chandigarh-Delhi; West Uttar Pradesh, East Uttar Pradesh, West Rajasthan and East Rajasthan.
 - **Central India:** West Madhya Pradesh, East Madhya Pradesh, Vidarbha and Chhattisgarh.
 - **East India:** Bihar, Jharkhand, Sub-Himalayan West Bengal & Sikkim; Gangetic West Bengal, Odisha and Andaman & Nicobar Islands.
 - **Northeast India:** Arunachal Pradesh, Assam & Meghalaya and Nagaland, Manipur, Mizoram & Tripura.
 - **West India:** Gujarat Region, Saurashtra & Kutch, Konkan & Goa, Madhya Maharashtra and Marathawada.
 - **South India:** Coastal Andhra Pradesh & Yanam, Telangana, Rayalaseema, Coastal Karnataka, North Interior Karnataka, South Interior Karnataka, Kerala & Mahe, Tamil Nadu, Puducherry & Karaikal and Lakshadweep.

LEGENDS

1. अंडमान और निकोबार द्वीपसमूह

2. अरुणाचल प्रदेश

3. असम और मेघालय

4. नागालैंड, मणिपुर, मिजोरम और त्रिपुरा

5. उप-हिमालयी पश्चिम बंगाल और सिक्किम

6. गंगीय पश्चिम बंगाल

7. ओडिशा

8. झारखंड

9. बिहार

10. पूर्वी उत्तर प्रदेश

11. पश्चिम उत्तर प्रदेश

12. उत्तराखंड

13. हरियाणा, चंडीगढ़ और दिल्ली

14. पंजाब

15. हिमाचल प्रदेश

16. जम्मू और कश्मीर और लद्दाख

17. पश्चिम राजस्थान

18. पूर्वी राजस्थान

19. पश्चिम मध्य प्रदेश

20. पूर्वी मध्य प्रदेश

21. गुजरात

22. सौराष्ट्र

23. कोंकण और गोवा

24. मध्य महाराष्ट्र

25. मराठवाड़ा

26. विदर्भ

27. छत्तीसगढ़

28. तटीय आंध्र प्रदेश और यनम

29. तेलंगाना

30. रायलसीमा

31. तमिलनाडु, पुडुचेरी और कराईकल

32. तटीय कर्नाटक

33. आंतरिक उत्तरी कर्नाटक

34. आंतरिक दक्षिणी कर्नाटक

35. केरल और माहे

36. लक्षद्वीप



1. Andaman & Nicobar Islands

2. Arunachal Pradesh

3. Assam & Meghalaya

4. Nagaland, Manipur, Mizoram & Tripura

5. Sub-Himalayan West Bengal & Sikkim

6. Gangetic West Bengal

7. Odisha

8. Jharkhand

9. Bihar

10. East Uttar Pradesh

11. West Uttar Pradesh

12. Uttarakhand

13. Haryana, Chandigarh & Delhi

14. Punjab

15. Himachal Pradesh

16. Jammu & Kashmir and Ladakh

17. West Rajasthan

18. East Rajasthan

19. West Madhya Pradesh

20. East Madhya Pradesh

21. Gujarat

22. Saurashtra

23. Konkan & Goa

24. Madhya Maharashtra

25. Marathwada

26. Vidarbha

27. Chhattisgarh

28. Coastal Andhra Pradesh & Yanam

29. Telangana

30. Rayalaseema

31. Tamilnadu, Puducherry & Karaikal

32. Coastal Karnataka

33. North Interior Karnataka

34. South Interior Karnataka

35. Kerala & Mahe

36. Lakshadweep

SPATIAL DISTRIBUTION (% of Stations reporting)

% Stations	Category	% Stations	Category
76-100	Widespread (WS/Most Places)	26-50	Scattered (SCT/A Few Places)
51-75	Fairly Widespread (FWS/Many Places)	1-25	Isolated (ISOL)



Fog



Heavy Snow



Cold Wave



Heavy Rain



Dust Storm



Cold Day



Very Heavy Rain



Heat Wave



Ground Frost



Extremely Heavy Rain



Warm Night



Thunder & Lightning



Hot Day



Hailstorm



Hot & Humid



Dust Raising Winds



Strong Surface Winds

COLOUR CODED WARNING

No Warning (No Action)

Watch (Be Aware)

Alert (Be Prepared To Take Action)

Warning (Take Action)

Probabilistic Forecast

Terms	Probability of Occurrence (%)
Unlikely	< 25
Likely	25 - 50
Very Likely	50 - 75
Most Likely	> 75

* Red colour warning does not mean "Red Alert", Red colour warning means "Take Action".

Forecast and Warning for any day is valid from 0830 hours IST of day till 0830 hours IST of next day.

For more details, kindly visit <https://mausam.imd.gov.in> or contact: 011-2434-4599

(Service to the Nation since 1875)

DEFINITION/CRITERIA

Rain/ Snow *

Heavy: 64.5 to 115.5 mm/cm *
Very Heavy: 115.6 to 204.4 mm/cm *
Extremely Heavy: > 204.4 mm/cm *

Heat Wave

When maximum temperature of a station reaches $\geq 40^{\circ}\text{C}$ for plains and $\geq 30^{\circ}\text{C}$ for hilly regions
(a) Based on Departure from normal

Heat Wave: Maximum Temperature Departure from normal 4.5°C to 6.4°C .

Severe Heat Wave: Maximum Temperature Departure from normal $\geq 6.5^{\circ}\text{C}$

(b). Based on Actual maximum temperature

Heat Wave: When actual maximum temperature $\geq 45^{\circ}\text{C}$.

Severe Heat Wave: When actual maximum temperature $\geq 47^{\circ}\text{C}$.

(c). Criteria for heat wave for coastal stations

When maximum temperature departure is $> 4.5^{\circ}\text{C}$ from normal. Heat Wave may be described provided maximum temperature $\geq 37^{\circ}\text{C}$.

Warm Night

When maximum temperature remains 40°C

Warm Night: When minimum temperature departure 4.5°C to 6.4°C .

Severe Warm Night: When minimum temperature departure $> 6.4^{\circ}\text{C}$.

Cold Wave

When minimum temperature of a station $\leq 10^{\circ}\text{C}$ for plains and $\leq 0^{\circ}\text{C}$ for hilly regions.

(a). Based on departure

Cold Wave: Minimum Temperature Departure from normal -4.5°C to -6.4°C .

Severe Cold Wave: Minimum Temperature Departure from normal $\leq -6.5^{\circ}\text{C}$

(b) Based on actual Minimum Temperature (for Plains only)

Cold Wave: When Minimum Temperature is $\leq 4.0^{\circ}\text{C}$

Severe Cold Wave: When Minimum Temperature is $\leq 2.0^{\circ}\text{C}$

(c) For Coastal Stations

When Minimum Temperature departure is $\leq -4.5^{\circ}\text{C}$ & actual Minimum Temperature is $\leq 15^{\circ}\text{C}$

Cold Day

When minimum temperature of a station $\leq 10^{\circ}\text{C}$ for plains and $\leq 0^{\circ}\text{C}$ for hilly regions

Based on departure

Cold Day: Maximum Temperature Departure from normal -4.5°C to -6.4°C .

Severe Cold Day: Maximum Temperature Departure from normal $\leq -6.5^{\circ}\text{C}$

Fog

Phenomenon of small droplets suspended in air and the horizontal visibility $< 1\text{km}$

Moderate Fog: When the visibility between 500-200 metres

Dense Fog: when the visibility between 50- 200 metres

Very Dense Fog: when the visibility < 50 metres

Thunderstorm

Sudden electrical discharges manifested by a flash of light (Lightning) and a sharp rumbling sound (thunder)

Dust/Sand Storm

An ensemble of particles of dust or sand energetically lifted to great heights by a strong and turbulent wind.

Frost

Ice deposits on ground

Air temperature $\leq 4^{\circ}\text{C}$ (over Plains)

Squall

A strong wind that rises suddenly, lasts for atleast 1 minute.

Moderate: Wind speed 52-61 kmph

Severe: Wind speed 62-67 kmph

Very Severe: Wind speed > 67 kmph

Sea State

Effect of various waves in the sea over specific area

Rough to very rough: Wind speed 41-62 kmph (22-33 knots) & Wave height 2.5-6 metre

High to very high: Wind speed 63-117 kmph (34-63 knots) & Wave height 6-14 metre

Phenomenal: Wind speed > 117 kmph (> 63 knots) & Wave height > 14 metre

Cyclone

Cyclonic Storm: Wind speed 62-87 kmph (34-47 knots)

Severe Cyclonic Storm: Wind speed 88-117 kmph (48-63 knots)

Very Severe Cyclonic Storm: Wind speed 118-165 kmph (64 - 89 knots)

Extremely Severe Cyclonic Storm: Wind speed 166-220 kmph (90 -119 knots)

Super Cyclone Storm: Wind speed > 220 kmph (> 119 knots)

* Red colour warning does not mean "Red Alert", Red colour warning means "Take Action".

Forecast and Warning for any day is valid from 0830 hours IST of day till 0830 hours IST of next day.

For more details, kindly visit <https://mausam.imd.gov.in> or contact: 011-2434-4599

(Service to the Nation since 1875)

Hot and Humid: When maximum temperatures remain 3°C above normal along with the above normal relative humidity.