



**Government of India
Ministry of Earth Sciences
India Meteorological Department**



Press Release

Date: 14th August, 2025

Time of Issue: 1330 hours IST

Subject: i) Low Pressure area over northwest and adjoining areas of Westcentral Bay of Bengal and South Odisha-North Andhra Pradesh Coasts.

ii) Heavy to very heavy rainfall likely to continue over Coastal Andhra Pradesh, Odisha, Telangana, Madhya Pradesh, Vidarbha, Karnataka, Chhattisgarh, Rayalaseema and Telangana, Interior Karnataka during next 4-5 days.

iii) Heavy to very heavy rainfall likely over Uttarakhand, Himachal Pradesh and Jammu on today, the 14th August with gradual reduction thereafter.

Realised weather during past 24 hours till 0830 hours IST of today, the 14th August, 2025:

- ❖ **Extremely heavy rainfalls (≥ 21 cm)** have been recorded at isolated places over Uttarakhand, Bihar, Konkan & Goa, Coastal Andhra Pradesh & Yanam.
- ❖ **Very heavy rainfall (12-20 cm)** has been recorded at isolated places over Delhi, Uttar Pradesh, East Rajasthan, Sub-Himalayan West Bengal & Sikkim, Konkan & Goa and Telangana.
- ❖ **Heavy rainfall (7-11 cm)** has been recorded at isolated places over Himachal Pradesh, Haryana, Punjab, Vidarbha, Chhattisgarh, Gangetic West Bengal, Madhya Pradesh, Assam, Odisha, Madhya Maharashtra and North Interior Karnataka.

For more details of realised weather, kindly refer Annexure I.

i. Weather Systems, Forecast and Warnings (refer to Annexure II & III):

- ❖ The Monsoon trough runs south of its normal position.
- ❖ The **low-pressure area** lay over northwest and adjoining areas of Westcentral Bay of Bengal and South Odisha-North Andhra Pradesh Coasts at 0830 hrs IST of today, the 14th August 2025. It is likely to move west-northwestwards across south Odisha-North Coastal Andhra Pradesh during next 24 hours.
- ❖ An **upper air cyclonic circulation** lies over Punjab and another over West Uttar Pradesh in lower tropospheric levels.
- ❖ An **upper air cyclonic circulation** lies over Northeast Arabian Sea & adjoining Kutch in lower tropospheric levels.
- ❖ An **east-west trough** runs from central parts of Bay of Bengal to northeast Arabian sea adjoining Kutch in lower tropospheric levels tilting southward with height.

Under the influence of these systems, the following weather is likely:

East & Central India:

- ❖ Isolated **heavy rainfall** likely over Madhya Pradesh, Vidarbha & Chhattisgarh during 14th-20th; Sub-Himalayan West Bengal & Sikkim on 14th & during 17th-19th; Gangetic West Bengal on 14th; Bihar on 14th, 17th & 18th; Odisha during 15th-18th August **with isolated very heavy rainfall over West Madhya Pradesh on 14th & 15th; Vidarbha on 14th & 17th; Chhattisgarh on 14th & during 18th-20th and Odisha on 14th August.**
- ❖ Light to moderate rainfall at most/many places accompanied with thunderstorm & lightning likely over the region during next 7 days.

South Peninsular India:

- ❖ Isolated **heavy rainfall** likely over Tamil Nadu & Rayalaseema on 14th; Kerala & Mahe during 14th-18th; Coastal Andhra Pradesh & Yanam, Telangana, Interior Karnataka during 14th-19th; Coastal Karnataka during 14th-20th August with isolated **very heavy rainfall over Coastal Andhra Pradesh & Yanam on 14th; Telangana during 14th-16th; Coastal Karnataka on 14th & during 17th-19th; South Interior Karnataka on 19th August.**
- ❖ Strong surface winds (speed reaching 40-50 kmph) very likely over South Peninsular India on 14th August.
- ❖ Light to moderate rainfall at most/many places accompanied with thunderstorm & lightning likely over Rayalaseema, Coastal Andhra Pradesh & Yanam and Telangana during next 5 days.

Northwest India:

- ❖ Isolated **heavy rainfall** likely over Jammu-Kashmir on 15th, 17th & 18th; Himachal Pradesh, Uttarakhand during 14th-20th; Punjab, Haryana, Chandigarh on 15th & 16th; West Uttar Pradesh on 16th; East Uttar Pradesh on 14th; West Rajasthan on 16th & 17th; East Rajasthan during 14th-18th & on 20th August with **very heavy rainfall** over Jammu- Kashmir, Himachal Pradesh, Punjab, Haryana, Chandigarh, West Uttar Pradesh on 14th; Uttarakhand on 14th, 16th & 17th; East Rajasthan on 15th & 16th August.
- ❖ Light/moderate rainfall at most/many places accompanied with thunderstorm & lightning likely over Jammu-Kashmir-Ladakh-Gilgit-Baltistan-Muzaffarabad, Uttarakhand & Rajasthan during next 7 days.

Northeast India:

- ❖ Isolated **heavy rainfall** likely to continue over Arunachal Pradesh, Assam & Meghalaya on 14th, 16th, 17th, 20th; Nagaland, Manipur, Mizoram & Tripura during 14th-18th August with **very heavy rainfall** over Assam & Meghalaya on 16th August.
- ❖ Light/moderate rainfall at many places accompanied with thunderstorm & lightning likely during next 3 days.

West India:

- ❖ **Extremely heavy rainfall** very likely at isolated places over Konkan & Goa on 17th; Madhya Maharashtra on 17th & 18th August.
- ❖ Isolated **heavy rainfall** likely over Madhya Maharashtra on 14th; Konkan & Goa on 15th & 20th; Marathwada on 14th, 15th & 18th; Gujarat Region during 14th-17th; Saurashtra & Kutch on 17th August **with isolated very heavy rainfall over Konkan & Goa on 14th, 16th, 18th & 19th; Ghat areas of Madhya Maharashtra during 15th-20th; Gujarat State during 18th-20th August.**
- ❖ Light to moderate rainfall at many/some places very likely over the region during next 5 days.

Fishermen warning:

Fishermen are advised to avoid venturing into the following from 14th August to 19th August 2025 to the following Areas:

Arabian Sea

Most parts of westcentral Arabian Sea and adjoining, some parts of eastcentral, southwest Arabian Sea during 14th to 19th August; southern parts of north Arabian Sea during 14th August; over some parts of Comorin, Lakshadweep areas during 14th to 17th August; along and off Konkan, Goa, Karnataka coasts during 14th to 19th August, along & off Kerala and adjoining Lakshadweep areas during 14th to 17th August; along and off the Somalia coast Yemen & Oman coasts and adjoining sea areas during 14th to 19th August.

Bay of Bengal:

Along and off Sri Lanka coast during 14th, 15th & 18th August; over central, south Bay of Bengal during 14th, 15th & 18th August; many parts of central Bay of Bengal, some parts of south Bay of Bengal during 16th & 17th August; some parts of north Bay of Bengal during 14th & 15th August; along and off Andhra Pradesh, south Odisha coasts during 14th to 16th August; along and off south Andhra Pradesh coast on 16th August; Over Gulf of Mannar and along and off south Tamil Nadu coast during 14th to 19th August; over Andaman Sea during 14th to 16th August.

ii. Weather conditions and forecast over Delhi/NCR during 14th to 17th August, 2025 (Annexure IV)

For more details, kindly refer National Weather Bulletin:

https://mausam.imd.gov.in/responsive/all_india_forecast_bulletin.php

For District wise warnings refer: <https://mausam.imd.gov.in/responsive/districtWiseWarningGIS.php>

For Fishermen warning refer <https://rsmcnewdelhi.imd.gov.in/fishermen-warning.php>

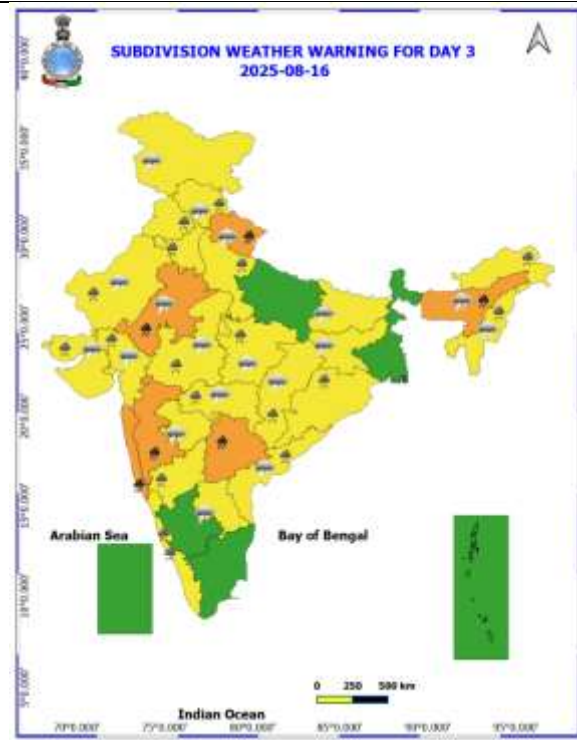
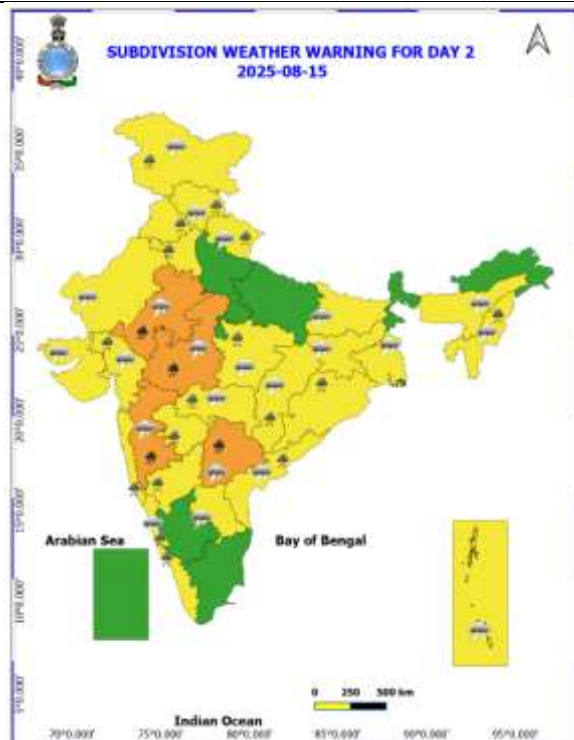
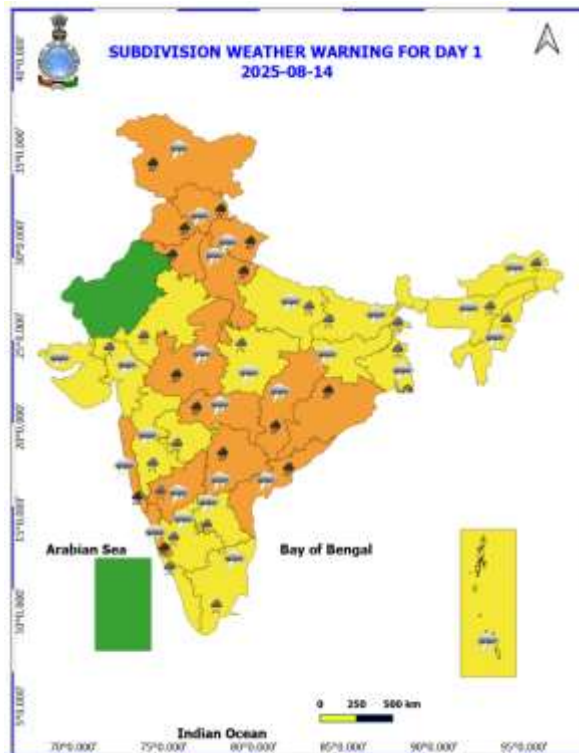
Rainfall recorded (in cm) during past 24 hours till 0830 hours IST of today, the 14th August:

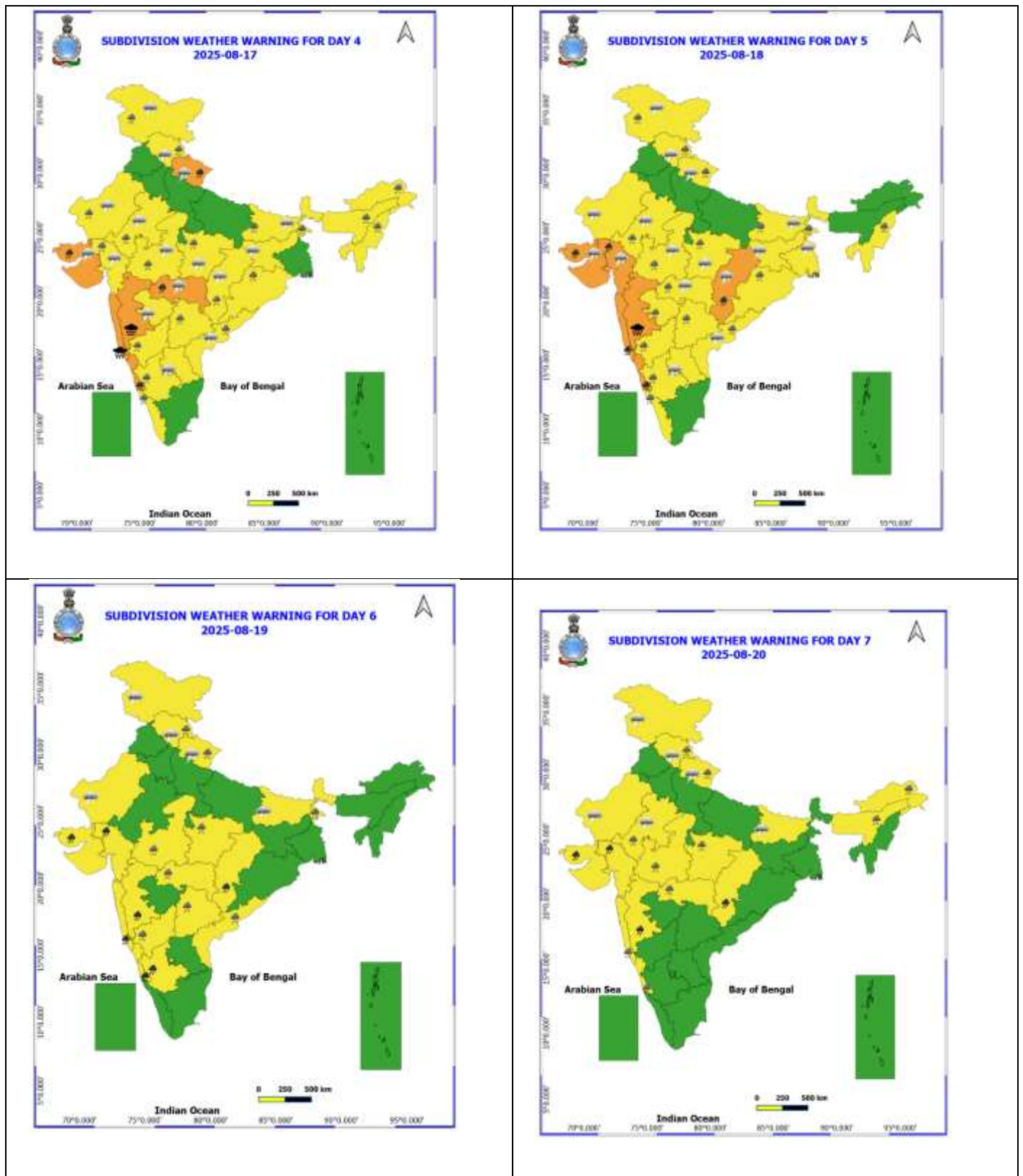
- ❖ **Uttarakhand:** Chorgalia(AWS) 30, Chorgalia 29, Hardwar (dist Hardwar) 20, Pantnagar (dist Udham Singh Nagar) 18, Haldwani (dist Nainital) 16, Nainital (dist Nainital) 13, Kotdwara (dist Garhwal Pauri) 12, Mukteshwar (dist Nainital) 9, Chaukhutia (dist Almora) 9, Bageshwar (thmo) (dist Bageshwar) 8, Rishikesh (dist Dehradun) 8, Lohaghat (dist Champawat) 8, Kashipur (dist Udham Singh Nagar) 7, Roshnabad (dist Hardwar) 7, Champawat (dist Champawat) 7;
- ❖ **Coastal Andhra Pradesh & Yanam:** Tanuku (dist West Godavari) 24, Nandigama (dist Ntr District) 19, Tadepalligudem (dist West Godavari) 16, Amalapuram (dist B R Ambedkar Konaseema) 13, Denkada (dist Vizianagaram) 13, Vijayawada A.p. (dist Ntr District) 13, Paleru Bridge (dist Ntr District) 12, Bhimadole (dist Eluru) 10, Pusapatirega (dist Vizianagaram) 9, Eluru (dist Eluru) 9, Tuni (dist Kakinada) 8, Vizianagaram (dist Vizianagaram) 8, Palakoderu (dist West Godavari) 8, Prathipadu (dist Kakinada) 7;
- ❖ **Bihar:** Athmalgola (dist Patna) 23; Barh (dist Patna) 20; Noorsarai (dist Nalanda), Meskaur (dist Nawada) 15 Each; Bind (dist Nalanda), Bakhtiarpur (dist Patna) 14 Each; Mohra (dist Gaya), Atri (dist Gaya), Rahui (dist Nalanda), Khusrupur (dist Patna) 13 Each; Neem Chak Bathani (dist Gaya), Mohiuddinnagar (dist Samastipur), Raghobpur (dist Vaishali) 12 Each; Khagadia (dist Khagaria), Barbiga (dist Sheikhpura), Hilsa (dist Nalanda), Tharthari (dist Nalanda) 11 Each; Bihar Shrif (dist Nalanda) 10; Sarmera (dist Nalanda), Karai Parsurai (dist Nalanda), Asthawan (dist Nalanda), Parbalpur (dist Nalanda), Nardiganj (dist Nawada), Mohanpur (dist Samastipur), Bidupur (dist Vaishali) 9 Each; Mahua (dist Vaishali), Salakhua (dist Saharsa), Harnaut (dist Nalanda), Patori (dist Samastipur), Silao (dist Nalanda), Ben (dist Nalanda) 8 Each; Jhanjharpur (dist Madhubani), Pandarak (dist Patna), Balchhi (dist Patna), Sahdei Buzurg (dist Vaishali), Chehara Kala (dist Vaishali) 7 Each;
- ❖ **Konkan & Goa:** Rameshwar ARG (dist Sindhudurg) 21; Vaibhavwadi (dist Sindhudurg) 13; Devgad (dist Sindhudurg) 11; Ratnagiri (dist Ratnagiri) 10; Pernem (dist North Goa), Mhasla (dist Raigad), Mapusa (dist North Goa) 9 Each; Malvan (dist Sindhudurg), Rajapur (dist Ratnagiri), Panjim (dist North Goa), Quepem (dist South Goa) 8 Each; Harnai IMD (dist Ratnagiri), Shriwardhan (dist Raigad), Murud (dist Raigad), Kudal (dist Sindhudurg), Dabolim N.a.s.- Navy (dist South Goa) 7 Each;
- ❖ **Telangana:** Kalwakurthy (dist Nagarkurnool) 20; Pargi (dist Vikarabad) 15; Doma (dist Vikarabad), Chandrugonda (dist B. Kothagudem), Jadcherla (dist Mahabubnagar), Madhira (dist Khammam) 12 Each; Dummugudem (dist B. Kothagudem), Aswaraopeta (dist B. Kothagudem), Sathupalle (dist Khammam), Kodada (dist Suryapet), Khila Ghanpur (dist Wanaparthy) 11 Each; Kosgi (dist Narayanpet), Wanaparthy (dist Wanaparthy), Thimmajipeta (dist Nagarkurnool), Burgampadu (dist B. Kothagudem), Kondurg (dist Rangareddy), Peddamandadi (dist Wanaparthy), Gopalpet (dist Wanaparthy), Kothakota (dist Wanaparthy) 10 Each; Bhadrachalam (dist B. Kothagudem), Vicarabad (dist Vikarabad), Kusumanchi (dist Khammam), Gandeed (dist Mahabubnagar), Mahbubnagar (dist Mahabubnagar), Nawabpet (dist Vikarabad), Shamshabad(ARG) (dist Rangareddy), Pedda Adiserlapalle (dist Nalgonda), Chilkur (dist Suryapet), Mothey (dist Suryapet), Bhoothpur (dist Mahabubnagar), Addakal (dist Mahabubnagar), Bala Nagar (dist Mahabubnagar), Hanwada (dist Mahabubnagar), Horti Univ Mojerla AP (dist Wanaparthy) 9 Each; Nalgonda (dist Nalgonda), Bonakal (dist Khammam), Vangoor (dist Nagarkurnool), Huzur Nagar (dist Suryapet), Atmakur Wnp (dist Wanaparthy), Miryalaguda (dist Nalgonda), Narva (dist Narayanpet) 8 Each; Palawancha (dist B. Kothagudem), Suryapet (dist Suryapet), Tandur (dist Vikarabad), Kothagudem (dist B. Kothagudem), Narayanpet (dist Narayanpet), Chinna Chinta Kunt (dist Mahabubnagar), Devarakonda (dist Nalgonda), Julurpad (dist B. Kothagudem), Mulakalapalle (dist B. Kothagudem), Kodangal (dist Vikarabad), Chinthakam (dist Khammam), Kodangal(ARG) (dist Vikarabad), Dummagudem(ARG) (dist B. Kothagudem), Mattampally (dist Suryapet), Utkoor (dist Narayanpet), Midjil (dist Mahabubnagar), Enkuru (dist Khammam) 7 Each;
- ❖ **East Uttar Pradesh:** Hasanganj (dist Unnao) 15, Hardoi Obsy (dist Hardoi) 12, Lucknow (hs) (dist Lucknow) 12, Nawabganj Tehsil (dist Barabanki) 12, Lucknow (Cr) (dist Lucknow) 12, Lucknow (Ap) (dist Lucknow) 12, Bhatpurwaghat (dist Sitapur) 10, Sandila (dist Hardoi) 10, Hardoi Teh (dist Hardoi) 9, Sidhauli (dist Sitapur) 8, Malihabad (dist Lucknow) 7, Shahabad (dist Hardoi) 7;
- ❖ **West Uttar Pradesh:** Baheri (dist Bareilly) 14, Shahjahanpur Obsy (dist Shahjahanpur) 12, Shahjahanpur (t) (dist Shahjahanpur) 11, Bareilly Pbo (dist Bareilly) 8;
- ❖ **Sub-Himalayan West Bengal & Sikkim:** Rongo (dist Kalimpong) 13, Kumargram (dist Alipurduar) 13, Fagu Tea Estate (dist Jalpaiguri) 13, Amfu Kalimpong (dist Kalimpong) 10, Lava (dist Kalimpong) 10,

- Kalimpong (dist Kalimpong) 10, Chalouni Tea Estate (dist Jalpaiguri) 10, Singimari (dist Cooch Behar) 10, Algarah (dist Kalimpong) 9, Sevoke (dist Darjeeling) 9, Gurjonghora Tea Estate (dist Jalpaiguri) 9, Barobhisha (dist Alipurduar) 8, Jhallong (dist Kalimpong) 8, Raidak Tea Estate (dist Alipurduar) 8, Chepan (dist Alipurduar) 8, Zurrantee T.e (dist Jalpaiguri) 8, Chel (dist Jalpaiguri) 7, Rongli (dist Pakyong) 7, Aibheel Tea Estate (dist Jalpaiguri) 7, Washabari Tea Estate (dist Jalpaiguri) 7, Ghish (dist Jalpaiguri) 7, Tadong (dist Gangtok) 7;
- ❖ **East Rajasthan:** Sapau (Dholpur) 12, Dholpur Tehsil (Dholpur) 11, Bayana (Bharatpur) 8;
 - ❖ **Delhi:** Green Field Ps (dist North East Delhi) 12, Aya Nagar (dist South Delhi) 6;
 - ❖ **West Madhya Pradesh:** Karera (dist Shivpuri) 11, Alipur(jaura) (dist Morena) 9, Narwar (dist Shivpuri) 7;
 - ❖ **Vidarbha:** Dhamangaon Rlwy (dist Amraoti), Chandur Rlwy (dist Amraoti), Arvi (dist Wardha) 11 Each; Maregaon (dist Yeotmal), Deoli (dist Wardha), Selu (dist Wardha), Wardha (dist Wardha), Ralegaon (dist Yeotmal) 8 Each; Babulgaon (dist Yeotmal), Kalamb (dist Yeotmal), Bhandara (dist Bhandara), Amraoti (dist Amraoti) 7 Each;
 - ❖ **Punjab:** Nangal (dist Rupnagar) 10, Jalandhar (dist Jalandhar) 7, Ganguwal (dist Rupnagar) 7, Garhshankar (dist Hoshiarpur) 7;
 - ❖ **Himachal Pradesh:** Rajgarh (dist Sirmaur) 10, Kandaghat (dist Solan) 10, Jatton Barrage (dist Sirmaur) 9, Una (dist Una) 9, Solan (dist Solan) 8, Kotkhai (dist Shimla) 8, Shillaro (dist Shimla) 7, Simla (dist Shimla) 7, Kufri (dist Shimla) 7, Jubberhatti (dist Shimla) 7, Renuka / Dadhau (dist Sirmaur) 7;
 - ❖ **Chhattisgarh:** Sukma (dist Sukma) 9, Karpawand (dist Bastar) 8, Chhindgarh (dist Sukma) 8, Konta (dist Sukma) 8, Kukrel (dist Dhamtari) 7, Narayanpur (dist Narayanpur) 7;
 - ❖ **Odisha:** Dabugan (dist Nawarangpur) 8, Bari (dist Jajpur) 7;
 - ❖ **Madhya Maharashtra:** Gaganbawada (dist Kolhapur) 8;
 - ❖ **Haryana:** Jind (dist Jind) 7;
 - ❖ **Gangetic West Bengal:** Bankura(cwc) (dist Bankura) 7;
 - ❖ **East Madhya Pradesh:** Kirnapur (dist Balaghat) 7;
 - ❖ **Assam:** Agomoni (Assam) 7;
 - ❖ **North Interir Karnataka:** Aland (dist Kalaburgi) 7.

Table-1								
7 Days Rainfall Forecast								
S.No.	Subdivision	14- Aug	15- Aug	16- Aug	17- Aug	18- Aug	19- Aug	20- Aug
		Day 1	Day 2	Day 3	Day 4	Day 5	Day 6	Day 7
1	ANDAMAN & NICOBAR ISLANDS	FWS	FWS	FWS	FWS	FWS	FWS	FWS
2	ARUNACHAL PRADESH	FWS	SCT	SCT	SCT	SCT	SCT	FWS
3	ASSAM & MEHGHALAYA	FWS	FWS	FWS	FWS	FWS	FWS	FWS
4	NAGALAND, MANIPUR, MIZORAM AND TRIPURA	FWS	FWS	FWS	FWS	FWS	FWS	FWS
5	SUB HIMALAYAN WEST BENGAL & SIKKIM	FWS	FWS	FWS	FWS	FWS	FWS	FWS
6	GANGETIC WEST BENGAL	FWS	FWS	SCT	FWS	FWS	FWS	FWS
7	ODISHA	FWS	FWS	FWS	FWS	FWS	FWS	FWS
8	JHARKHAND	FWS	SCT	SCT	FWS	FWS	FWS	FWS
9	BIHAR	SCT	SCT	SCT	SCT	FWS	FWS	SCT
10	EAST UTTAR PRADESH	SCT	ISOL	SCT	SCT	SCT	SCT	SCT
11	WEST UTTAR PRADESH	FWS	SCT	SCT	SCT	SCT	FWS	FWS
12	UTTARAKHAND	FWS	FWS	FWS	FWS	FWS	FWS	FWS
13	HARYANA, CHANDIGARH & DELHI	FWS	FWS	FWS	FWS	SCT	SCT	SCT
14	PUNJAB	FWS	FWS	FWS	FWS	SCT	SCT	SCT
15	HIMACHAL PRADESH	FWS	FWS	FWS	FWS	FWS	FWS	FWS
16	JAMMU AND KASHMIR AND LADAKH	FWS	FWS	SCT	FWS	FWS	FWS	FWS
17	WEST RAJASTHAN	ISOL	ISOL	ISOL	SCT	FWS	FWS	SCT
18	EAST RAJASTHAN	SCT	FWS	FWS	FWS	FWS	FWS	FWS
19	WEST MADHYA PRADESH	FWS	FWS	FWS	FWS	FWS	FWS	FWS
20	EAST MADHYA PRADESH	FWS	FWS	FWS	FWS	FWS	FWS	FWS
21	GUJRAT REGION	FWS	FWS	FWS	FWS	FWS	FWS	FWS
22	SAURASHTRA & KUTCH	SCT	FWS	FWS	FWS	FWS	FWS	FWS
23	KONKAN & GOA	FWS	FWS	FWS	FWS	FWS	FWS	FWS
24	MADHYA MAHARASHTRA	FWS	SCT	SCT	FWS	FWS	FWS	SCT
25	MARATHWADA	FWS	SCT	SCT	SCT	FWS	FWS	SCT
26	VIDARBHA	FWS	FWS	FWS	FWS	FWS	FWS	FWS
27	CHHATTISGARH	FWS	FWS	FWS	FWS	FWS	FWS	FWS
28	COASTAL ANDHRA PRADESH	FWS	FWS	SCT	FWS	FWS	FWS	SCT
29	TELANGANA	FWS	FWS	FWS	FWS	FWS	FWS	FWS
30	RAYALASEEMA	FWS	SCT	SCT	SCT	FWS	FWS	SCT
31	TAMILNADU & PUDUCHERRY	ISOL	ISOL	ISOL	ISOL	ISOL	ISOL	ISOL
32	COSTAL KARNATAKA	FWS	FWS	FWS	FWS	FWS	FWS	FWS
33	NORTH INTERIOR KARNATAKA	FWS	FWS	FWS	FWS	FWS	FWS	FWS
34	SOUTH INTERIOR KARNATAKA	FWS	SCT	SCT	FWS	FWS	FWS	FWS
35	KERALA AND MAHE	FWS	FWS	FWS	FWS	FWS	FWS	FWS
36	LAKSHADWEEP	FWS	FWS	FWS	FWS	FWS	FWS	FWS

- As the lead period increases forecast accuracy decrease.





- Action may be taken based on ORANGE AND REDCOLOUR warnings.
- Vulnerable regions likely urban and hilly areas action may be initiated for heavy rainfall warning.
- As the lead period increases forecast accuracy decreases.

Detailed districtwise Multi Hazard weather warning for next five days available at <https://mausam.imd.gov.in/responsive/districtWiseWarningGIS.php>

Weather forecast over Delhi/NCR during 14th August to 17th August 2025**Past Weather:**

There has been appreciable fall in minimum temperatures by 1-3°C and no large change in maximum temperatures in past 24 hours over Delhi. The minimum temperatures are in the range of 23-25°C and maximum temperatures were in the range of 33-35°C. The minimum temperatures are below normal upto 1-3 °C and maximum temperatures were near normal over Delhi. South westerly winds prevailed with wind speed upto 19 kmph in past 24 hours over Delhi. Generally cloudy sky conditions with a wind speed of upto 10-15 kmph from the southeast direction prevailed over the region in the forenoon today.

Weather Forecast:

14.08.2025: Generally cloudy sky. Possibility of light to moderate rain/thunderstorm with heavy spells at isolated places. The maximum temperatures over Delhi are likely to be in the range of 29 to 31°C. The maximum temperature will be below normal upto 3 to 5°C . The predominant surface wind will likely be from the east direction with a wind speed of upto 10-15 kmph during afternoon, evening and night.

15.08.2025: Generally cloudy sky. Possibility of one or two spells of very light to light rain/thunderstorm during morning and forenoon hours. Another spell of very light to light rain likely towards evening/night. The maximum and minimum temperatures over Delhi are likely to be in the range of 31 to 33°C and 23 to 25 °C respectively. The minimum temperature will be below normal up to 2 to 4°C and the maximum temperature will be below normal upto 1 to 3°C. The predominant surface wind will likely to be from the east direction with a wind speed of upto 10-15 kmph during morning and afternoon hours. The wind speed will remain to 10-15 kmph from the southeast direction during evening and night.

16.08.2025: Generally cloudy sky. Possibility of one or two spells of very light to light rain/thunderstorm during morning and forenoon hours. Another spell of very light to light rain likely towards evening/night. The maximum and minimum temperatures over Delhi are likely to be in the range of 32 to 34°C and 22 to 24°C respectively. The minimum temperature will be below normal up to 3 to 5°C and the maximum temperature will be below normal upto 0 to 2°C. The predominant surface wind will likely to be from the southeast direction with a wind speed of upto 10-15 kmph during morning hours. It will remain upto 10-15 kmph during afternoon from the east direction and 10-15 kmph from the southeast direction during evening and night.

17.08.2025: Generally cloudy sky. Possibility of very light rain/drizzle during morning hours. The maximum and minimum temperatures over Delhi are likely to be in the range of 32 to 34°C and 23 to 25°C respectively. The minimum temperature will be below normal up to 2 to 4°C and the maximum temperature will be below normal up to 0 to 2°C . The predominant surface wind will likely to be from the southeast direction with a wind speed of 10-15 kmph during morning, afternoon and evening hours.

Impact & Action Suggested due to

- ❖ **Extremely heavy rainfall** at isolated places over Konkan & Goa on 17th; Madhya Maharashtra on 17th & 18th August.
- ❖ **Very heavy rainfall** over Jammu- Kashmir, Himachal Pradesh, Punjab, Haryana, Chandigarh, West Uttar Pradesh, Odisha, Coastal Andhra Pradesh & Yanam on 14th; West Madhya Pradesh on 14th & 15th; Vidarbha on 14th & 17th; Chhattisgarh on 14th & during 18th-20th; Telangana during 14th-16th; Coastal Karnataka on 14th & during 17th-19th; South Interior Karnataka on 19th; Uttarakhand on 14th, 16th & 17th; East Rajasthan on 15th & 16th; Assam & Meghalaya on 16th; Konkan & Goa on 14th, 16th, 18th & 19th; Ghat areas of Madhya Maharashtra during 15th-20th; Gujarat State during 18th-20th August.

Impact Expected

- Localized Flooding of roads, water logging in low lying areas and closure of underpasses mainly in urban areas of the above region.
- Occasional reduction in visibility due to heavy rainfall.
- Disruption of traffic in major cities due to water logging in roads leading to increased travel time.
- Minor damage to kutcha roads.
- Possibilities of damage to vulnerable structure.
- Localized Landslides/Mudslides/landslips/mudslips/landsinks/mudsinks.
- Damage to horticulture and standing crops in some areas due to inundation.
- It may lead to riverine flooding in some river catchments (for riverine flooding please visit Web page of CWC)

Action Suggested

- Check for traffic congestion on your route before leaving for your destination.
- Follow any traffic advisories that are issued in this regard.
- Avoid going to areas that face the water logging problems often.
- Avoid staying in vulnerable structure.

Agromet advisories for likely impact of Heavy / Heavy to Very Heavy Rainfall

- In **Andhra Pradesh**, provide adequate drainage in the fields of rice, maize, groundnut, cotton, black gram, green gram, pigeon pea and sesame in **Krishna Godavari Zone**; from maize, cotton, sugarcane, paddy, mesta, red gram, green gram, black gram and groundnut fields in **North Coastal Zone**; from standing crop and vegetable fields in **High Altitude Tribal Zone**.
- In **Telangana**, drain out excess water from fields of rice, cotton, maize, soybean, pigeon pea, turmeric and vegetables in **Northern Telangana Zone** and rice, cotton, maize, red gram, soybean, sugarcane and vegetables in **Southern Telangana Zone**.
- In **Odisha**, ensure proper drainage in fields of rice (especially in lowland and medium land), maize and vegetables to avoid water stagnation in **Eastern Ghat High Land Zone** and **South Eastern Ghat Zone**.
- In **Madhya Pradesh**, provide adequate drainage in the fields of maize, soybean, black gram, cotton, and pigeon pea in **Vindhyan Plateau Zone**; maize, soybean, cotton, sugarcane and vegetables in **Satpura Plateau Zone**; rice, soybean, maize, sugarcane and vegetables in **Central Narmada Valley Zone** and soybean, pigeon pea, cotton and vegetables in **Nimar Valley Zone**.
- In **Chhattisgarh**, make arrangements to drain out excess water from fields of *kharif* maize, rice, minor millets, pulses and vegetables in **Bastar Plateau Zone** and rice, soybean, pigeon pea, green gram, black gram, groundnut, maize, sugarcane and vegetables in **Plain Zone**; and from fields of rice, maize, vegetables and orchards in **Northern Hills Zone**.
- In **Maharashtra**, make arrangements to drain out excess water from rice, finger millet, turmeric, groundnut, vegetables and orchards in **Konkan**; from rice fields in *ghat* areas of **Madhya Maharashtra**; and from soybean and cotton crop in **Vidarbha**.
- In **Jammu and Kashmir**, do not allow water to stagnate in fields of maize, pulses, cowpea, bajra, fodder crops and vegetables in **Sub Tropical Zone**. Maintain proper drainage facility in maize, pulses and vegetable fields to avoid waterlogging in **Intermediate Zone**. In **Valley Temperate Zone**, provide proper staking to bottle gourd, cucumber, bitter gourd etc. vines and indeterminate tomatoes. Make proper drainage channels in fields of maize for removal of excess rain water.

- In **Himachal Pradesh**, maintain proper drainage channels in ginger, turmeric and maize fields in **Mid Hills Sub Humid Zone** and rice, maize and vegetable fields in **Sub Montane and Low Hills Sub Tropical Zone**. Undertake harvesting of matured tomato, capsicum and brinjal fruits in **Mid Hills Sub Humid Zone** and ripened tomatoes in **High Hills Sub Temperate Wet Zone**.
- In **Uttarakhand**, maintain 5-7 cm water level in rice fields by removing excess water and maintain proper drainage channels in fields of sugarcane, maize, green gram and black gram in **Bhabar and Tarai Zone**. In **Hill Zone**, keep the bunds of the rice fields clean by removing weeds. Maintain proper drainage in soybean, maize, pulses, finger millet, ginger and vegetable fields and fruit orchards. In **Sub Humid Sub Tropic Zone**, ensure proper drainage in fields of barnyard millet, finger millet, green gram and black gram.
- In **Uttar Pradesh**, make necessary arrangements for drainage of excess water from the fields of pigeon pea, chilli and onion in **Bundelkhand Zone**. In **Western Plain Zone**, postpone sowing of pigeon pea, maize, green gram and black gram till cessation of heavy rains. Ensure proper drainage in all pulses, vegetables and other crops. Make scaffolding in bottle gourd vegetables.
- In **Sub-Himalayan West Bengal**, drain out excess water from rice, chilli and gourds fields and cover the chilli seedlings with plastic to protect them from heavy rains in **Terai Zone**.

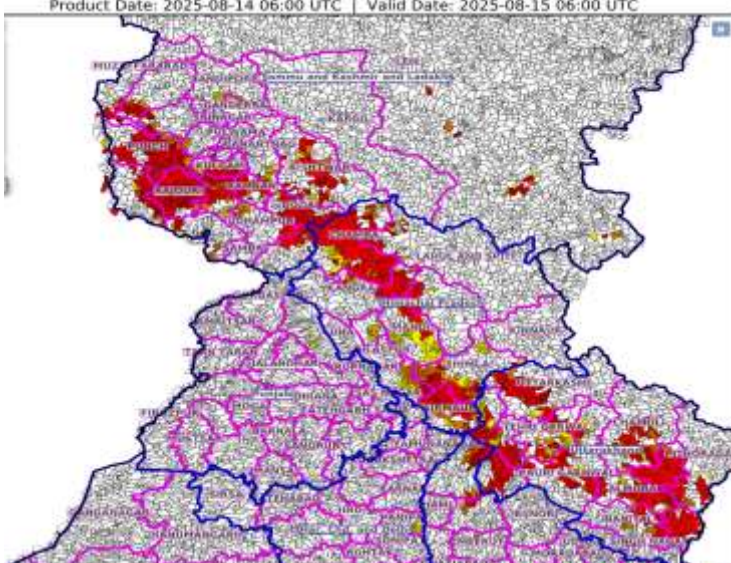
Livestock / Fishery

- Keep the animals inside the shed during heavy rainfall and provide them balanced feed.
- Store feed and fodder in a safe place to prevent spoilage.
- Construct an outlet with proper netting around the ponds to drain out excess water, thereby preventing fish from escaping in case of overflow.

Agromet advisories for likely impact of Thunderstorm / Gusty Winds / Squally Winds

- Provide mechanical support to horticultural crops and staking or support to vegetables and young fruit plants / fruit-bearing plants to avoid lodging due to strong winds.

Flash flood guidance:

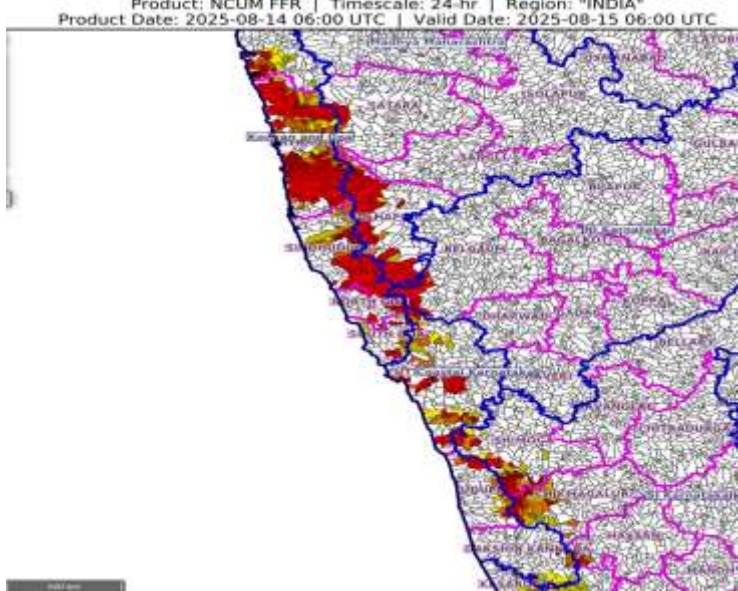
<p>24 hours Outlook for the Flash Flood Risk (FFR) till 1130 IST of 15-08-2025 :</p> <p>Moderate to High flash flood risk likely over few watersheds & neighbourhoods of following Met Sub-divisions during next 24 hours.</p> <p>Himachal Pradesh - Chamba, Kangra, Kullu, Lahul&Spiti, Mandi, Shimla, Sirmaur and Solan districts. Jammu & Kashmir & Ladakh - Anantnag, Bandipore, Baramula, Doda, Ganderwal, Jammu, Kathua, Kistwar, Kulgam, Kupwara, Punch, Rajouri, Ramban, Riasi, Shopian, Udhampur, Leh And Ladakh, Mirpur and Muzaffarabad districts. Uttarakhand - Almora, Bageshwar, Chamoli, Champawat, Dehradun, Haridwar, Nanital, Pauri Garhwal, Pithoragarh, Rudraprayag, Tehri Garwal and Uttarkashi districts.</p> <p>Surface runoff/ Inundation may occur at some fully saturated soils & low-lying areas over Area of Concern (AoC) as shown in map due to expected rainfall occurrence in next 24 hours.</p>	<p>Product: NCUM FFR Timescale: 24-hr Region: "INDIA" Product Date: 2025-08-14 06:00 UTC Valid Date: 2025-08-15 06:00 UTC</p> 
--	--

24 hours Outlook for the Flash Flood Risk (FFR) till 1130 IST of 15-08-2025 :

Low to Moderate flash flood risk likely over few watersheds & neighbourhoods of following Met Sub-divisions during next 24 hours.

Coastal Karnataka - Dakshin Kannada, Udupi and Uttar Kannada districts.
Adjoining South Interior Karnataka - Chikmagalur, Hassan, Kodagu and Shimoga district and Konkani & Goa Met Sub-divisions during next 24 hours.
Adjoining Madhya Maharashtra - Kolhapur and Satara districts.

Surface runoff/ Inundation may occur at some fully saturated soils & low-lying areas over Area of Concern (AoC) as shown in map due to expected rainfall occurrence in next 24 hours.

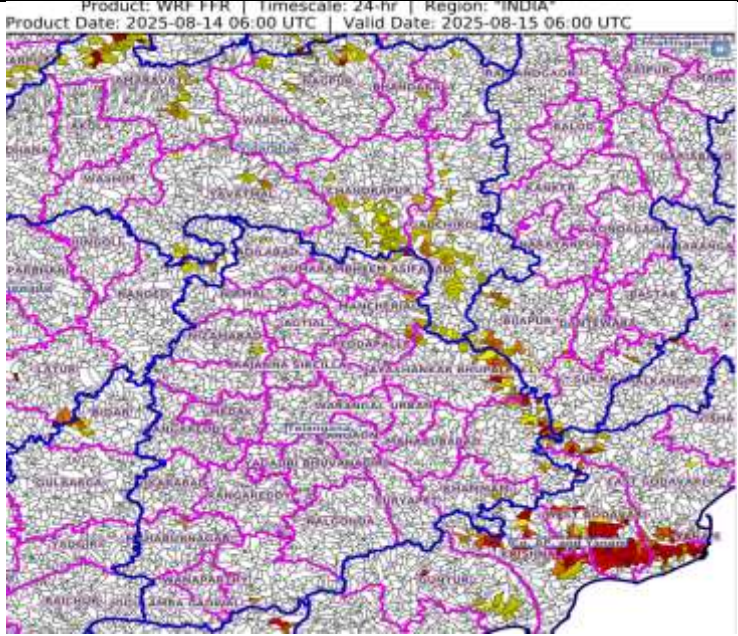


24 hours Outlook for the Flash Flood Risk (FFR) till 1130 IST of 15-08-2025 :

Low to Moderate flash flood risk likely over few watersheds & neighbourhoods of following Met Sub-divisions during next 24 hours.

Coastal Andhra Pradesh & Yanam - East Godavari, Guntur, Krishna, West Godavari and Yanam districts.
Telangana - B. Kothagudem, J. Bhupalpally, Kumaram Bheem, Mancherla and Peddapalle districts.
Vidarbha - Amaravati, Bhandara, Chandrapur, Gadchiroli, Gondiya, Nagpur and Yavatmal districts.

Surface runoff/ Inundation may occur at some fully saturated soils & low-lying areas over Area of Concern (AoC) as shown in map due to expected rainfall occurrence in next 24 hours.



Legends & abbreviations:

- ❖ **Heavy Rain:**64.5-115.5mm; **Very Heavy Rain:**115.6-204.4mm; **Extremely Heavy Rain:** >204.4mm.
- ❖ **Obsy:** Observatory; Automatic Weather Station; **ARG:** Automatic Rain Gauge; **dist:** District; **NH:** National Highway; **KVK:** Krishi Vigyan Kendra; **DVC:** Damodar Valley Corporation; **PTO:** Part Time Office, **Aero:** Aerodrome, **IAF:** Indian Air Force.
- ❖ **Region wise classification of meteorological Sub-Divisions:**
 - **Northwest India:** Western Himalayan Region (Jammu-Kashmir-Ladakh-Gilgit-Baltistan-Muzaffarabad, Himachal Pradesh and Uttarakhand); Punjab, Haryana-Chandigarh-Delhi; West Uttar Pradesh, East Uttar Pradesh, West Rajasthan and East Rajasthan.
 - **Central India:** West Madhya Pradesh, East Madhya Pradesh, Vidarbha and Chhattisgarh.
 - **East India:** Bihar, Jharkhand, Sub-Himalayan West Bengal & Sikkim; Gangetic West Bengal, Odisha and Andaman & Nicobar Islands.
 - **Northeast India:** Arunachal Pradesh, Assam & Meghalaya and Nagaland, Manipur, Mizoram & Tripura.
 - **West India:** Gujarat Region, Saurashtra & Kutch, Konkan & Goa, Madhya Maharashtra and Marathawada.
 - **South India:** Coastal Andhra Pradesh & Yanam, Telangana, Rayalaseema, Coastal Karnataka, North Interior Karnataka, South Interior Karnataka, Kerala & Mahe, Tamil Nadu, Puducherry & Karaikal and Lakshadweep.

LEGENDS

1. अंडमान और निकोबार द्वीपसमूह

2. अरुणाचल प्रदेश

3. असम और मेघालय

4. नागालैंड, मणिपुर, मिजोरम और त्रिपुरा

5. उप-हिमालयी पश्चिम बंगाल और सिक्किम

6. गंगीय पश्चिम बंगाल

7. ओडिशा

8. झारखंड

9. बिहार

10. पूर्वी उत्तर प्रदेश

11. पश्चिम उत्तर प्रदेश

12. उत्तराखंड

13. हरियाणा, चंडीगढ़ और दिल्ली

14. पंजाब

15. हिमाचल प्रदेश

16. जम्मू और कश्मीर और लद्दाख

17. पश्चिम राजस्थान

18. पूर्वी राजस्थान

19. पश्चिम मध्य प्रदेश

20. पूर्वी मध्य प्रदेश

21. गुजरात

22. सौराष्ट्र

23. कोंकण और गोवा

24. मध्य महाराष्ट्र

25. मराठवाड़ा

26. विदर्भ

27. छत्तीसगढ़

28. तटीय आंध्र प्रदेश और यनम

29. तेलंगाना

30. रायलसीमा

31. तमिलनाडु, पुडुचेरी और कराईकल

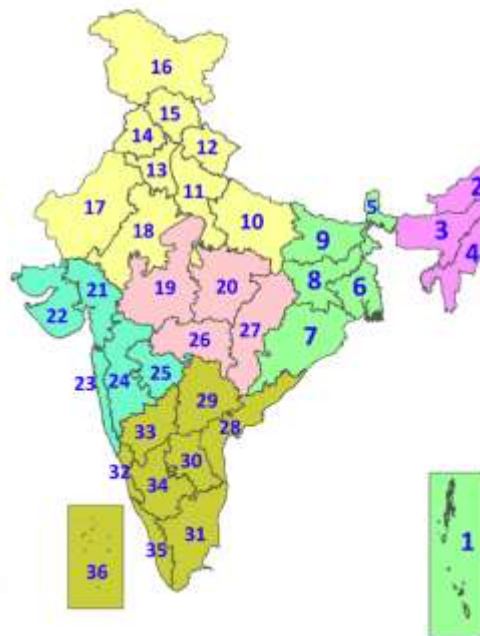
32. तटीय कर्नाटक

33. आंतरिक उत्तरी कर्नाटक

34. आंतरिक दक्षिणी कर्नाटक

35. केरल और माहे

36. लक्षद्वीप



1. Andaman & Nicobar Islands

2. Arunachal Pradesh

3. Assam & Meghalaya

4. Nagaland, Manipur, Mizoram & Tripura

5. Sub-Himalayan West Bengal & Sikkim

6. Gangetic West Bengal

7. Odisha

8. Jharkhand

9. Bihar

10. East Uttar Pradesh

11. West Uttar Pradesh

12. Uttarakhand

13. Haryana, Chandigarh & Delhi

14. Punjab

15. Himachal Pradesh

16. Jammu & Kashmir and Ladakh

17. West Rajasthan

18. East Rajasthan

19. West Madhya Pradesh

20. East Madhya Pradesh

21. Gujarat

22. Saurashtra

23. Konkan & Goa

24. Madhya Maharashtra

25. Marathwada

26. Vidarbha

27. Chhattisgarh

28. Coastal Andhra Pradesh & Yanam

29. Telangana

30. Rayalaseema

31. Tamilnadu, Puducherry & Karaikal

32. Coastal Karnataka

33. North Interior Karnataka

34. South Interior Karnataka

35. Kerala & Mahe

36. Lakshadweep

SPATIAL DISTRIBUTION (% of Stations reporting)

% Stations	Category	% Stations	Category
76-100	Widespread (WS/Most Places)	26-50	Scattered (SCT/A Few Places)
51-75	Fairly Widespread (FWS/Many Places)	1-25	Isolated (ISOL)



Fog



Heavy Snow



Cold Wave



Heavy Rain



Dust Storm



Cold Day



Very Heavy Rain



Heat Wave



Ground Frost



Extremely Heavy Rain



Warm Night



Thunder & Lightning



Hot Day



Hailstorm



Hot & Humid



Dust Raising Winds



Strong Surface Winds

COLOUR CODED WARNING

No Warning (No Action)

Watch (Be Aware)

Alert (Be Prepared To Take Action)

Warning (Take Action)

Probabilistic Forecast

Terms	Probability of Occurrence (%)
Unlikely	< 25
Likely	25 - 50
Very Likely	50 - 75
Most Likely	> 75

* Red colour warning does not mean "Red Alert", Red colour warning means "Take Action".

Forecast and Warning for any day is valid from 0830 hours IST of day till 0830 hours IST of next day.

For more details, kindly visit <https://mausam.imd.gov.in> or contact: 011-2434-4599

(Service to the Nation since 1875)

DEFINITION/CRITERIA

Rain/ Snow *

Heavy: 64.5 to 115.5 mm/cm *
Very Heavy: 115.6 to 204.4 mm/cm *
Extremely Heavy: > 204.4 mm/cm *

Heat Wave

When maximum temperature of a station reaches $\geq 40^{\circ}\text{C}$ for plains and $\geq 30^{\circ}\text{C}$ for hilly regions
(a) Based on Departure from normal

Heat Wave: Maximum Temperature Departure from normal 4.5°C to 6.4°C .

Severe Heat Wave: Maximum Temperature Departure from normal $\geq 6.5^{\circ}\text{C}$

(b). Based on Actual maximum temperature

Heat Wave: When actual maximum temperature $\geq 45^{\circ}\text{C}$.

Severe Heat Wave: When actual maximum temperature $\geq 47^{\circ}\text{C}$.

(c). Criteria for heat wave for coastal stations

When maximum temperature departure is $> 4.5^{\circ}\text{C}$ from normal. Heat Wave may be described provided maximum temperature $\geq 37^{\circ}\text{C}$.

Warm Night

When maximum temperature remains 40°C

Warm Night: When minimum temperature departure 4.5°C to 6.4°C .

Severe Warm Night: When minimum temperature departure $> 6.4^{\circ}\text{C}$.

Cold Wave

When minimum temperature of a station $\leq 10^{\circ}\text{C}$ for plains and $\leq 0^{\circ}\text{C}$ for hilly regions.

(a). Based on departure

Cold Wave: Minimum Temperature Departure from normal -4.5°C to -6.4°C .

Severe Cold Wave: Minimum Temperature Departure from normal $\leq -6.5^{\circ}\text{C}$

(b) Based on actual Minimum Temperature (for Plains only)

Cold Wave: When Minimum Temperature is $\leq 4.0^{\circ}\text{C}$

Severe Cold Wave: When Minimum Temperature is $\leq 2.0^{\circ}\text{C}$

(c) For Coastal Stations

When Minimum Temperature departure is $\leq -4.5^{\circ}\text{C}$ & actual Minimum Temperature is $\leq 15^{\circ}\text{C}$

Cold Day

When minimum temperature of a station $\leq 10^{\circ}\text{C}$ for plains and $\leq 0^{\circ}\text{C}$ for hilly regions
Based on departure

Cold Day: Maximum Temperature Departure from normal -4.5°C to -6.4°C .

Severe Cold Day: Maximum Temperature Departure from normal $\leq -6.5^{\circ}\text{C}$

Fog

Phenomenon of small droplets suspended in air and the horizontal visibility $< 1\text{km}$

Moderate Fog: When the visibility between 500-200 metres

Dense Fog: when the visibility between 50- 200 metres

Very Dense Fog: when the visibility < 50 metres

Thunderstorm

Sudden electrical discharges manifested by a flash of light (Lightning) and a sharp rumbling sound (thunder)

Dust/Sand Storm

An ensemble of particles of dust or sand energetically lifted to great heights by a strong and turbulent wind.

Frost

Ice deposits on ground

Air temperature $\leq 4^{\circ}\text{C}$ (over Plains)

Squall

A strong wind that rises suddenly, lasts for atleast 1 minute.

Moderate: Wind speed 52-61 kmph

Severe: Wind speed 62-67 kmph

Very Severe: Wind speed > 67 kmph

Sea State

Effect of various waves in the sea over specific area

Rough to very rough: Wind speed 41-62 kmph (22-33 knots) & Wave height 2.5-6 metre

High to very high: Wind speed 63-117 kmph (34-63 knots) & Wave height 6-14 metre

Phenomenal: Wind speed > 117 kmph (> 63 knots) & Wave height > 14 metre

Cyclone

Cyclonic Storm: Wind speed 62-87 kmph (34-47 knots)

Severe Cyclonic Storm: Wind speed 88-117 kmph (48-63 knots)

Very Severe Cyclonic Storm: Wind speed 118-165 kmph (64 - 89 knots)

Extremely Severe Cyclonic Storm: Wind speed 166-220 kmph (90 -119 knots)

Super Cyclone Storm: Wind speed > 220 kmph (> 119 knots)

* Red colour warning does not mean "Red Alert", Red colour warning means "Take Action".

Forecast and Warning for any day is valid from 0830 hours IST of day till 0830 hours IST of next day.

For more details, kindly visit <https://mausam.imd.gov.in> or contact: 011-2434-4599

(Service to the Nation since 1875)

Hot and Humid: When maximum temperatures remain 3°C above normal along with the above normal relative humidity.