



Government of India  
Ministry of Earth Sciences  
India Meteorological Department



Press Release

Date: 15<sup>th</sup> August, 2025

Time of Issue: 1345 hours IST

**Subject: i) Low Pressure area over South Odisha & adjoining North Andhra Pradesh Coasts.  
ii) Heavy to very heavy rainfall over Goa, Maharashtra, and Gujarat State during next 7 days with Extremely heavy falls over Konkan & Goa during 16<sup>th</sup> -18<sup>th</sup>, Ghat area of Madhya Maharashtra on 17<sup>th</sup> & 18<sup>th</sup> and Gujarat Region on 18<sup>th</sup> August.  
iii) Heavy to very heavy rainfall over central India during next 7 days.**

**Realised weather during past 24 hours till 0830 hours IST of today, the 15<sup>th</sup> August, 2025:**

- ❖ **Very heavy rainfall (12-20 cm)** has been recorded at isolated places Jammu-Kashmir, Chhattisgarh, Coastal Karnataka, Odisha, Telangana, Konkan & Goa, Marathawada.
- ❖ **Heavy rainfall (7-11 cm)** has been recorded at isolated places over Himachal Pradesh, Coastal Andhra Pradesh & Yanam, Kerala & Mahe, East Rajasthan, West Uttar Pradesh, Haryana Chandigarh & Delhi, Punjab, Gujarat State, West Madhya Pradesh, North Interior Karnataka, Madhya Maharashtra, Assam & Meghalaya, Mizoram, Andaman & Nicobar Islands.

For more details of realised weather, kindly refer **Annexure I**.

**i. Weather Systems, Forecast and Warnings (refer to Annexure II & III):**

- ❖ The Monsoon trough runs south of its normal position.
- ❖ The **low-pressure area** lay over south Odisha & adjoining north Andhra Pradesh at 0830 hrs IST of today, the 15<sup>th</sup> August 2025. The associated upper air cyclonic circulation extended upto upper tropospheric level & tilting southwestwards with height.
- ❖ An **upper air cyclonic circulation** lay over Jammu-Kashmir & neighbourhood at lower tropospheric levels.
- ❖ The **upper air cyclonic circulation** lay over Northeast Arabian Sea & adjoining south Gujarat & Konkan & Goa at lower tropospheric levels.
- ❖ The **trough** runs from the southern parts of Gangetic West Bengal to eastcentral Arabian Sea across the upper air cyclonic circulation associated with the low-pressure area over south Odisha & adjoining north Andhra Pradesh, north Telangana, south Maharashtra between lower & middle tropospheric level tilting southward with height.
- ❖ The **upper air cyclonic circulation** lay over northeast Assam at lower tropospheric level.

Under the influence of these systems, the following weather is likely:

**West India:**

- ❖ **Extremely heavy rainfall** very likely at isolated places over Konkan & Goa during 16<sup>th</sup> -18<sup>th</sup>; Ghat areas of Madhya Maharashtra on 17<sup>th</sup> & 18<sup>th</sup>; Gujarat Region on 18<sup>th</sup> August.
- ❖ Isolated **heavy rainfall** likely over Madhya Maharashtra, Konkan & Goa, Gujarat State during next 7 days; Marathawada during 15<sup>th</sup> -19<sup>th</sup> August **with isolated very heavy rainfall over Konkan & Goa during next 7 days; Ghat areas of Madhya Maharashtra & Gujarat Region during 16<sup>th</sup>-21<sup>th</sup>; Marathawada on 15<sup>th</sup> & 18<sup>th</sup>; Saurashtra & Kutch during 18<sup>th</sup> -20<sup>th</sup> August.**
- ❖ Light to moderate rainfall at many/some places very likely over the region during next 5 days.

**Northwest India:**

- ❖ Isolated **heavy rainfall** likely over East Rajasthan & Uttarakhand during next 7 days; Himachal Pradesh during 15<sup>th</sup>- 20<sup>th</sup>, Jammu-Kashmir-Ladakh-Gilgit-Baltistan-Muzaffarabad 15<sup>th</sup>, 17<sup>th</sup> & 18<sup>th</sup>; Punjab during 15<sup>th</sup> -19<sup>th</sup>; Haryana Chandigarh & Delhi during 15<sup>th</sup> -18<sup>th</sup>; West Uttar Pradesh on 16<sup>th</sup> & 21<sup>st</sup>, East Uttar Pradesh on 20<sup>th</sup>; West Rajasthan on 19<sup>th</sup> August with **very heavy rainfall over Uttarakhand on 16<sup>th</sup> & 17<sup>th</sup>; East Rajasthan on 18<sup>th</sup> & 19<sup>th</sup> August.**
- ❖ Light/moderate rainfall at most/many places accompanied with thunderstorm & lightning likely over Jammu-Kashmir-Ladakh-Gilgit-Baltistan-Muzaffarabad, Uttarakhand & Rajasthan during next 7 days.

#### East & Central India:

- ❖ Isolated **heavy rainfall** likely over Madhya Pradesh & Chhattisgarh during next 7 days; Vidarbha during next 7 days except on 19<sup>th</sup>; Andaman & Nicobar Islands on 15<sup>th</sup>; Sub-Himalayan West Bengal & Sikkim on 17<sup>th</sup>, 18<sup>th</sup> & 21<sup>st</sup>; Jharkhand on 19<sup>th</sup>, Odisha on 15<sup>th</sup> & during 17<sup>th</sup> -21<sup>st</sup> August with **isolated very heavy rainfall over West Madhya Pradesh on 15<sup>th</sup>, 16<sup>th</sup>, 18<sup>th</sup> & 19<sup>th</sup>; Chhattisgarh during 19<sup>th</sup>-21<sup>st</sup> August.**
- ❖ Light to moderate rainfall at most/many places accompanied with thunderstorm & lightning likely over the region during next 5 days.

#### South Peninsular India:

- ❖ Isolated **heavy rainfall** likely over Coastal Karnataka & Telangana during the next 7 days; North Interior Karnataka 15<sup>th</sup> & 19<sup>th</sup>; Kerala & Mahe, Coastal Andhra Pradesh & Yanam during 15<sup>th</sup>-18<sup>th</sup>; South Interior Karnataka on 18<sup>th</sup> & 19<sup>th</sup> August with **isolated very heavy rainfall over Telangana during 15<sup>th</sup> - 19<sup>th</sup>; Coastal Andhra Pradesh & Yanam on 17<sup>th</sup> & 18<sup>th</sup>; Coastal Karnataka on 18<sup>th</sup> & 19<sup>th</sup> August.**
- ❖ Strong surface winds (speed reaching 40-50 kmph) very likely over South Peninsular India till 19<sup>th</sup> August.
- ❖ Light to moderate rainfall at most/many places accompanied with thunderstorm & lightning likely over Rayalaseema, Tamil Nadu, Coastal Andhra Pradesh & Yanam and Telangana during next 5 days.

#### Northeast India:

- ❖ Isolated **heavy rainfall** likely to continue over Assam & Meghalaya during next 7 days; Arunachal Pradesh, Nagaland, Manipur, Mizoram & Tripura during 16<sup>th</sup>-21<sup>st</sup> August with **very heavy rainfall over Arunachal Pradesh & Nagaland, Manipur, Mizoram & Tripura on 20<sup>th</sup> & 21<sup>st</sup>; Assam & Meghalaya on 16<sup>th</sup>, 20<sup>th</sup> & 21<sup>st</sup> August.**
- ❖ Light/moderate rainfall at many places accompanied with thunderstorm & lightning likely during next 3 days.

#### Fishermen warning:

Fishermen are advised to avoid venturing into the following from 15<sup>th</sup> August to 20<sup>th</sup> August 2025 to the following Areas:

##### Arabian Sea

Most parts of westcentral Arabian Sea and adjoining, some parts of eastcentral, southwest Arabian Sea during 15<sup>th</sup> to 20<sup>th</sup> August; over some parts of Comorin area during 15<sup>th</sup> to 18<sup>th</sup> August; Lakshadweep area during 15<sup>th</sup> to 19<sup>th</sup> August; along and off Konkan, Goa, Karnataka coasts during 15<sup>th</sup> to 20<sup>th</sup> August, along & off Kerala and adjoining Lakshadweep areas during 15<sup>th</sup> to 18<sup>th</sup> August; along and off south Gujarat coast during 18<sup>th</sup> to 20<sup>th</sup> August.

Along and off the Somalia coast Yemen & Oman coasts and adjoining sea areas during 15<sup>th</sup> to 20<sup>th</sup> August.

##### Bay of Bengal:

Along and off Sri Lanka coast for 15<sup>th</sup>, 17<sup>th</sup>, 18<sup>th</sup> & 19<sup>th</sup> August; over most parts of central, south Bay of Bengal during 15<sup>th</sup> to 20<sup>th</sup> August; some parts of north Bay of Bengal during 15<sup>th</sup> August; along and off Andhra Pradesh coast during 15<sup>th</sup> to 20<sup>th</sup> August, south Odisha coast during 15<sup>th</sup> August.

Over Gulf of Mannar and along and off south Tamil Nadu coast during 15<sup>th</sup> to 20<sup>th</sup> August.

Over Andaman Sea during 15<sup>th</sup> to 20<sup>th</sup> August.

Total suspension of fishing operations is suggested over above mentioned areas and dates.

#### ii. Weather conditions and forecast over Delhi/NCR during 15<sup>th</sup> to 18<sup>th</sup> August, 2025 (Annexure IV)

For more details, kindly refer National Weather Bulletin:

[https://mausam.imd.gov.in/responsive/all\\_india\\_forecast\\_bulletin.php](https://mausam.imd.gov.in/responsive/all_india_forecast_bulletin.php)

For District wise warnings refer: <https://mausam.imd.gov.in/responsive/districtWiseWarningGIS.php>

For Fishermen warning refer <https://rsmcnewdelhi.imd.gov.in/fishermen-warning.php>

**Rainfall recorded (in cm) during past 24 hours till 0830 hours IST of today, the 15<sup>th</sup> August:**

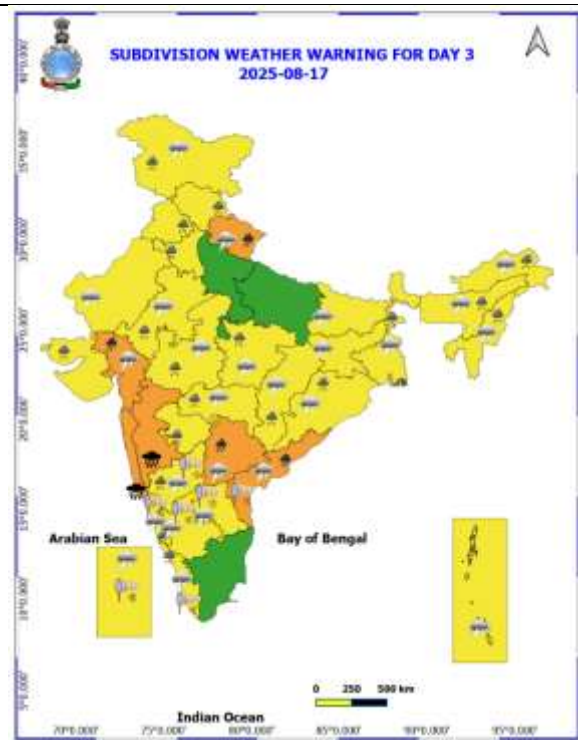
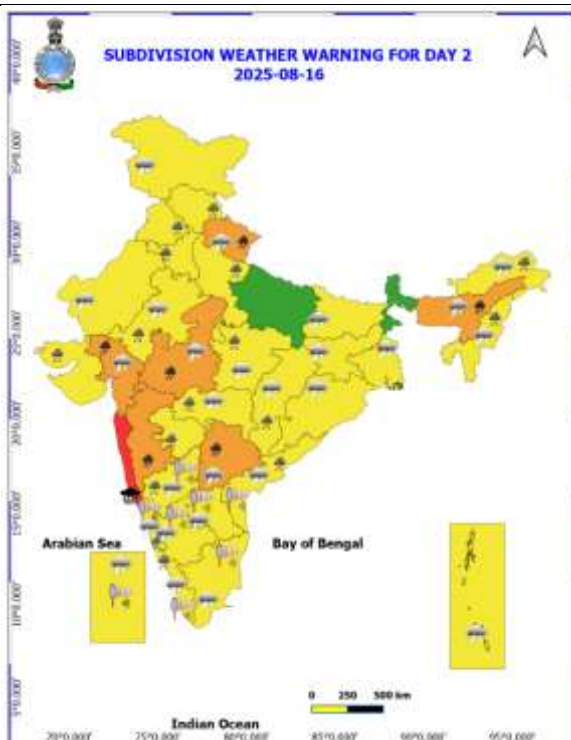
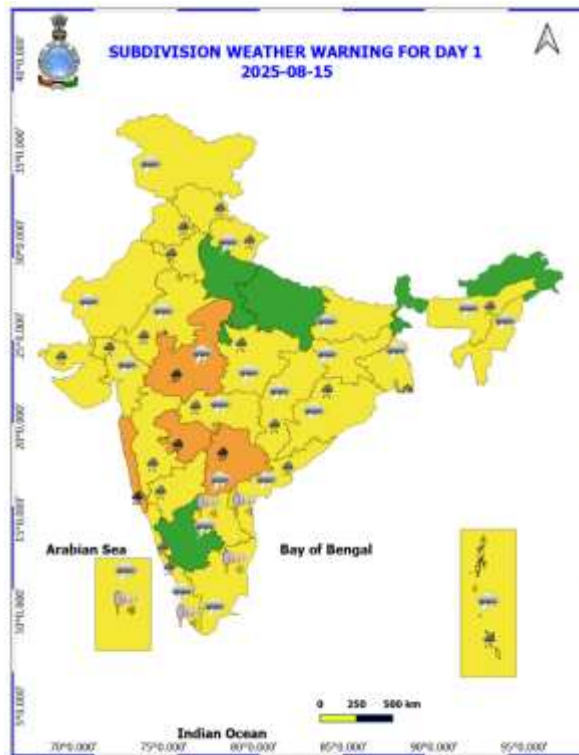
- ❖ **Konkan & Goa:** Harnai Imd Obsy (dist Ratnagiri) 18, Ratnagiri - Imd Obsy (dist Ratnagiri) 18, Vaibhavwadi (dist Sindhudurg) 15, Lanja (dist Ratnagiri) 15, Savarde-arg (dist Ratnagiri) 15, Guhagarh (dist Ratnagiri) 14, Dapoli\_agri (dist Ratnagiri) 13, Shriwardhan (dist Raigad) 13, Kudal (dist Sindhudurg) 11, Wakwali\_agri (dist Ratnagiri) 11, Sangameshwar Devrukh (dist Ratnagiri) 9, Mhasla (dist Raigad) 7, Mandangad (dist Ratnagiri) 7, Murud (dist Raigad) 7, Ponda (dist North Goa) 7,
- ❖ **Telangana:** Tekmal (dist Medak) 17, Alladurg (dist Medak) 14, Madnur (dist Kamareddy) 13, Kothaguda (dist Mahabubabad) 13, Varni (dist Nizamabad) 12, Regode (dist Medak) 11, Kotgiri (dist Nizamabad) 9, Kowdipalle (dist Medak) 8, Narayankhed (dist Sangareddy) 7, Chinthakam (dist Khammam) 7,
- ❖ **Marathawada:** Washi (dist Dharashiv) 16, Bhokar (dist Nanded) 12, Umari (dist Nanded) 12, Kandhar (dist Nanded) 10, Mukhed (dist Nanded) 8, Ausa (dist Latur) 8, Patoda (dist Beed) 8, Degloor - Fmo (dist Nanded) 8, Loha (dist Nanded) 7, Georai (dist Beed) 7, Nilanga (dist Latur) 7, Kaij (dist Beed) 7, Parbhani - Imd Obsy (dist Parbhani) 7, Lohara (dist Dharashiv) 7, Bhum (dist Dharashiv) 7,
- ❖ **Coastal Karnataka:** Ankola (dist Uttara Kannada) 15, Kadra (dist Uttara Kannada) 13, Karwar Obsy (dist Uttara Kannada) 8,
- ❖ **Odisha:** Th Rampur (dist Kalahandi) 13, Gop (dist Puri) 8, Nimpara (dist Puri) 8, Jaipatna (dist Kalahandi) 7,
- ❖ **Jammu-Kashmir-Ladakh-Gilgit-Baltistan-Muzaffarabad:** Rajouri (dist Rajouri) 14, Rajouri Arg (dist Rajouri) 8, Udhampur(iaf) (dist Udhampur) 8, Poonch (dist Poonch) 7, Reasi Arg (dist Reasi) 7,
- ❖ **Chhattisgarh:** Rajnandgaon (dist Rajnandgaon) 12, Takhatpur (dist Bilaspur) 7,
- ❖ **Himachal Pradesh:** Jogindarnagar (dist Mandi) 11, Palampur (dist Kangra) 10, Bharari (dist Hamirpur) 7, Narkanda Aws (dist Shimla) 7, Dharmsala (dist Kangra) 7, Naina Davi (dist Bilaspur) 7,
- ❖ **Madhya Maharashtra:** Gaganbawada (dist Kolhapur) 10, Radhanagari (dist Kolhapur) 8,
- ❖ **Punjab:** Hoshiarpur Aws (dist Hoshiarpur) 10, Bul Irr (dist Ludhiana) 9, Shahpur Kandi (dist Pathankot) 9, Madhopur (dist Pathankot) 7, Malikpur (dist Pathankot) 7,
- ❖ **Haryana Chandigarh & Delhi:** Ayanagar Aws (dist South Delhi) 9, Safdarjung (dist South East Delhi) 8, Lodi Road (dist South East Delhi) 7, Aya Nagar (dist South Delhi) 7, Nuh (dist Nuh) 9, Faridabad (dist Faridabad) 7, Bhadkal (dist Faridabad) 7,
- ❖ **East Rajasthan:** Niwai (dist Tonk) 9, Tonk Vanasthali (dist Tonk) 7,
- ❖ **North Interior Karnataka:** Bhalki (dist Bidar) 9,
- ❖ **West Madhya Pradesh:** Narwar (dist Shivpuri) 9,
- ❖ **Nagaland, Manipur, Mizoram & Tripura:** Saiha\_ Aws (dist Saiha) 9, Mokokchung (dist Mokokchung) 8, Ongpangkong Nsdma\_aws (dist Mokokchung) 8, Saiha (dist Saiha) 8, Sainik School\_arg (dist Imphal East) 7, Imphal T-aero (dist Imphal East) 7, Tuli Nsdma\_aws (dist Mokokchung) 7,
- ❖ **Assam & Meghalaya:** Meghalaya Barapani (dist Ri Bhoi) 9, Shillongani\_aws (dist Nagaon) 7,
- ❖ **Kerala & Mahe:** Vellanikkara (dist Thrissur) 8, Thattathumala (dist Thiruvananthapuram) 8, Tellichery (dist Cannur) 7, Ranni (dist Pathanamthitta) 7, Kunnathanam (dist Pathanamthitta) 7, Peechi (dist Thrissur) 7, Laha (dist Pathanamthitta) 7,
- ❖ **Gujarat Region:** Waghai (dist Dangs) 8, Dang\_kvks (dist Dangs) 7,
- ❖ **Saurashtra & Kutch:** Sutrapada (dist Gir Somnath) 8
- ❖ **Coastal Andhra Pradesh & Yanam:** Sompeta (dist Srikakulam) 7,
- ❖ **West Uttar Pradesh:** Madawara (dist Lalitpur) 7,
- ❖ **Andaman & Nicobar Islands:** Hut Bay 7,

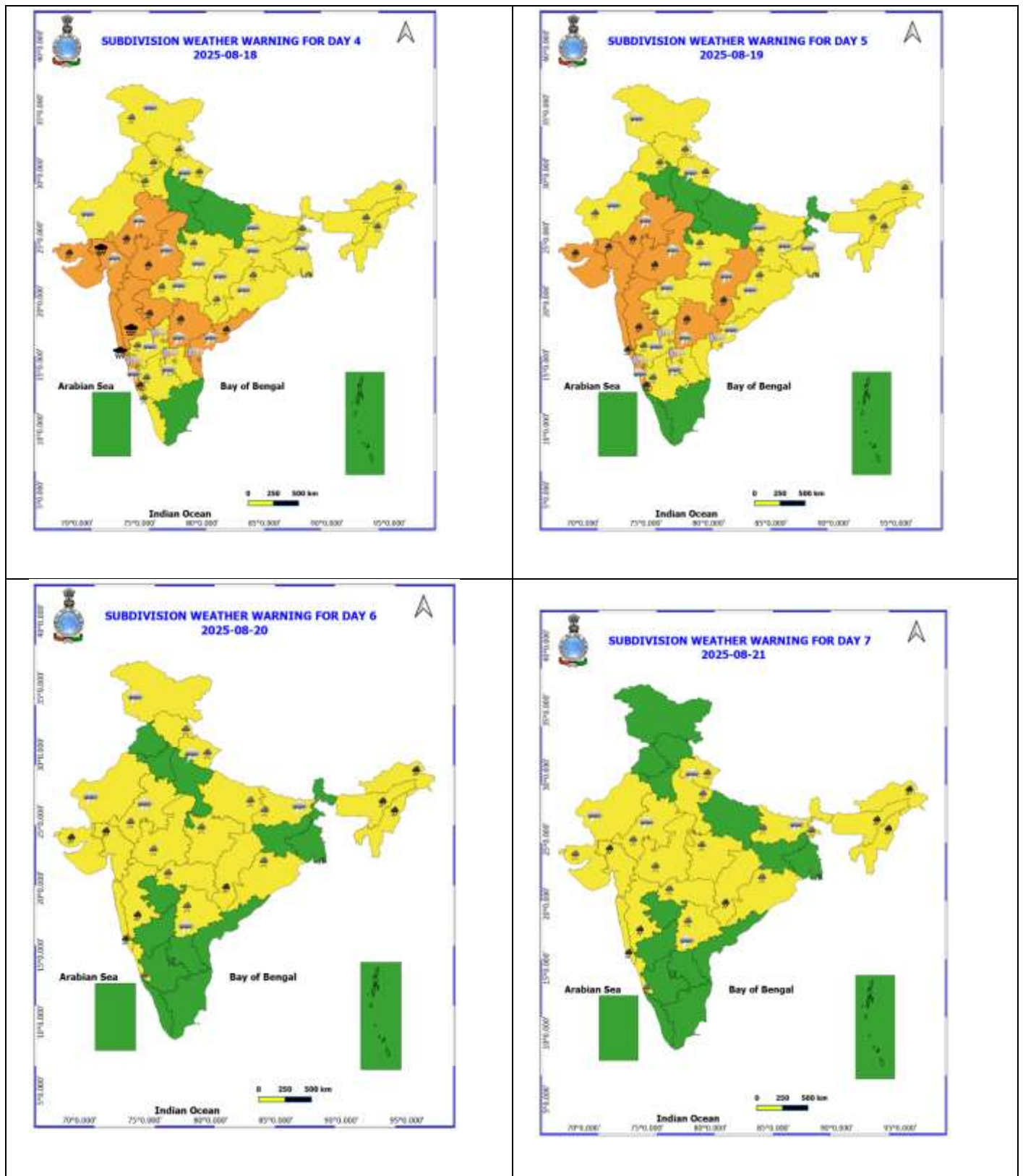
## ANNEXURE II

Table-1								
7 Days Rainfall Forecast								
S.No.	Subdivision	15- Aug	16- Aug	17- Aug	18- Aug	19- Aug	20- Aug	21- Aug
		Day 1	Day 2	Day 3	Day 4	Day 5	Day 6	Day 7
1	ANDAMAN & NICOBAR ISLANDS	WS	WS	WS	WS	WS	WS	WS
2	ARUNACHAL PRADESH	SCT	SCT	SCT	SCT	SCT	FWS	FWS
3	ASSAM & MEHGHALAYA	SCT	FWS	FWS	FWS	FWS	WS	WS
4	NAGALAND, MANIPUR, MIZORAM AND TRIPURA	SCT	FWS	FWS	FWS	FWS	WS	WS
5	SUB HIMALAYAN WEST BENGAL & SIKKIM	FWS	FWS	WS	WS	FWS	FWS	WS
6	GANGETIC WEST BENGAL	FWS	SCT	FWS	FWS	FWS	FWS	FWS
7	ODISHA	FWS	SCT	FWS	FWS	FWS	FWS	FWS
8	JHARKHAND	SCT	SCT	FWS	FWS	FWS	FWS	FWS
9	BIHAR	ISOL	SCT	SCT	SCT	SCT	FWS	FWS
10	EAST UTTAR PRADESH	ISOL	ISOL	SCT	SCT	SCT	FWS	FWS
11	WEST UTTAR PRADESH	ISOL	SCT	SCT	SCT	FWS	FWS	FWS
12	UTTARAKHAND	FWS	WS	WS	FWS	FWS	FWS	FWS
13	HARYANA, CHANDIGARH & DELHI	SCT	FWS	FWS	FWS	SCT	FWS	SCT
14	PUNJAB	SCT	SCT	SCT	FWS	SCT	SCT	SCT
15	HIMACHAL PRADESH	WS	FWS	FWS	WS	WS	FWS	FWS
16	JAMMU AND KASHMIR AND LADAKH	WS	SCT	FWS	WS	FWS	SCT	SCT
17	WEST RAJASTHAN	ISOL	ISOL	SCT	SCT	FWS	SCT	SCT
18	EAST RAJASTHAN	FWS	FWS	FWS	FWS	FWS	FWS	FWS
19	WEST MADHYA PRADESH	FWS	WS	WS	WS	WS	WS	WS
20	EAST MADHYA PRADESH	FWS	FWS	FWS	FWS	WS	WS	WS
21	GUJRAT REGION	WS	WS	WS	WS	WS	WS	WS
22	SAURASHTRA & KUTCH	FWS	WS	WS	WS	WS	WS	WS
23	KONKAN & GOA	WS	WS	WS	WS	WS	WS	WS
24	MADHYA MAHARASHTRA	SCT	FWS	FWS	WS	FWS	FWS	SCT
25	MARATHWADA	WS	FWS	FWS	WS	FWS	FWS	SCT
26	VIDARBHA	FWS	FWS	FWS	FWS	WS	WS	WS
27	CHHATTISGARH	FWS	FWS	FWS	WS	WS	WS	WS
28	COASTAL ANDHRA PRADESH	SCT	SCT	FWS	FWS	SCT	SCT	SCT
29	TELANGANA	WS	WS	FWS	FWS	FWS	SCT	SCT
30	RAYALASEEMA	SCT	SCT	FWS	FWS	SCT	ISOL	ISOL
31	TAMILNADU & PUDUCHERRY	ISOL	ISOL	ISOL	ISOL	ISOL	ISOL	ISOL
32	COSTAL KARNATAKA	WS	WS	WS	WS	WS	WS	WS
33	NORTH INTERIOR KARNATAKA	FWS	FWS	FWS	WS	WS	FWS	SCT
34	SOUTH INTERIOR KARNATAKA	SCT	SCT	FWS	FWS	FWS	SCT	SCT
35	KERALA AND MAHE	WS	WS	WS	WS	WS	FWS	FWS
36	LAKSHADWEEP	WS	WS	WS	FWS	FWS	SCT	SCT

- As the lead period increases forecast accuracy decrease.

### ANNEXURE III





- Action may be taken based on ORANGE AND REDCOLOUR warnings.
- Vulnerable regions likely urban and hilly areas action may be initiated for heavy rainfall warning.
- As the lead period increases forecast accuracy decreases.

Detailed districtwise Multi Hazard weather warning for next five days available at <https://mausam.imd.gov.in/responsive/districtWiseWarningGIS.php>

**Weather forecast over Delhi/NCR during 15<sup>th</sup> August to 18<sup>th</sup> August 2025****Past Weather:**

There has been no large in minimum temperatures and maximum temperatures markedly fell by 5-7°C in past 24 hours over Delhi. The minimum temperatures are in the range of 23-25°C and maximum temperatures were in the range of 27-28°C. The minimum temperatures are below normal by 1-3°C and maximum temperatures were markedly below normal by 5-7°C over Delhi. North easterly winds prevailed with wind speed upto 15 kmph in past 24 hours over Delhi. Maximum rainfall of 80.4 mm has been recorded at Safdarjung during the past 24 hrs over Delhi. Generally cloudy sky conditions with a wind speed of upto 10-15 kmph from the northeast direction prevailed over the region in the forenoon today.

**Weather Forecast:**

**15.08.2025:** Generally cloudy sky. Few spells of very light to light rain/ Thunderstorm at many places with moderate rain at isolated places towards afternoon to night. The maximum temperatures over Delhi are likely to be in the range of 29 to 31°C. The maximum temperature will be near normal. The predominant surface wind will likely be from the southeast direction with a wind speed of upto 05-10 kmph during the afternoon hours. The wind speed will be upto 10-15 kmph from the east direction during the evening and night.

**16.08.2025:** Generally cloudy sky. Possibility of one or two spells of very light to light rain/thunderstorm during morning and forenoon hours. Another spell of light rain likely towards evening/night. The maximum and minimum temperatures over Delhi are likely to be in the range of 32 to 34°C and 23 to 25°C respectively. The maximum temperature will be near normal and minimum temperature will be below normal upto 1 to 2 °C. The predominant surface wind will likely to be from the southeast direction with a wind speed of upto 10-15 kmph during morning hours. The predominant surface wind will likely to be from the southeast direction with a wind speed of 05-10 kmph during afternoon hours. The wind speed will be upto 10-15 kmph from the east direction during evening and night.

**17.08.2025:** Generally cloudy sky. Possibility of very light rain/drizzle during morning hours. The maximum and minimum temperatures over Delhi are likely to be in the range of 32 to 34°C and 23 to 25°C respectively. The maximum temperature will be near normal and the minimum temperature will be below normal upto 2 to 3°C. The predominant surface wind will likely to be from the southeast direction with a wind speed of upto 15-20 kmph during morning hours. The predominant surface wind will likely to be from the southeast direction with a wind speed of 10-15 kmph during afternoon hours. The wind speed will increase with speed upto 10-15 kmph coming from east direction from evening to night.

**18.08.2025:** Generally cloudy sky. Possibility of very light to light rain/thundershowers. The maximum and minimum temperatures over Delhi are likely to be in the range of 31 to 33°C and 23 to 25°C respectively. The maximum temperature will be below normal up to 1 to 2°C and the minimum temperature will be below normal up to 2 to 3°C. The predominant surface wind will likely to be from the southeast direction with a wind speed of 15-20 kmph during morning hours. The wind speed will be upto 10-15 kmph from southeast direction in the afternoon. The wind speed will be upto 10-15 kmph from east direction in evening and night.

### Impact & Action Suggested due to

- ❖ **Extremely heavy rainfall** at isolated places over Konkan & Goa during 16<sup>th</sup> -18<sup>th</sup>; Ghat areas of Madhya Maharashtra on 17<sup>th</sup> & 18<sup>th</sup>; Gujarat Region on 18<sup>th</sup> August.
- ❖ **Very heavy rainfall** over Konkan & Goa during next 7 days; Ghat areas of Madhya Maharashtra & Gujarat Region during 16<sup>th</sup>-21<sup>th</sup>; Marathwada on 15<sup>th</sup> & 18<sup>th</sup>; Saurashtra & Kutch during 18<sup>th</sup> -20<sup>th</sup>; Uttarakhand on 16<sup>th</sup> & 17<sup>th</sup>; East Rajasthan & Coastal Karnataka on 18<sup>th</sup> & 19<sup>th</sup>; West Madhya Pradesh on 15<sup>th</sup>, 16<sup>th</sup>, 18<sup>th</sup> & 19<sup>th</sup>; Chhattisgarh during 19<sup>th</sup>-21<sup>th</sup>; Telangana during 15<sup>th</sup> - 19<sup>th</sup>; Coastal Andhra Pradesh & Yanam on 17<sup>th</sup> & 18<sup>th</sup>; Arunachal Pradesh & Nagaland, Manipur, Mizoram & Tripura on 20<sup>th</sup> & 21<sup>st</sup>; Assam & Meghalaya on 16<sup>th</sup>, 20<sup>th</sup> & 21<sup>st</sup> August.

### Impact Expected

- Localized Flooding of roads, water logging in low lying areas and closure of underpasses mainly in urban areas of the above region.
- Occasional reduction in visibility due to heavy rainfall.
- Disruption of traffic in major cities due to water logging in roads leading to increased travel time.
- Minor damage to kutcha roads.
- Possibilities of damage to vulnerable structure.
- Localized Landslides/Mudslides/landslips/mudslips/landsinks/mudsinks.
- Damage to horticulture and standing crops in some areas due to inundation.
- It may lead to riverine flooding in some river catchments (for riverine flooding please visit Web page of CWC)

### Action Suggested

- Check for traffic congestion on your route before leaving for your destination.
- Follow any traffic advisories that are issued in this regard.
- Avoid going to areas that face the water logging problems often.
- Avoid staying in vulnerable structure.

### Agromet advisories for likely impact of Heavy / Heavy to Very Heavy Rainfall

- In **Maharashtra**, make arrangements to drain out excess water from the fields of rice, finger millet, turmeric, groundnut, vegetables and orchards in **Konkan**; rice, maize, groundnut, soybean, vegetables and orchards specially in *ghat* areas of **Madhya Maharashtra**; and standing crops like groundnut, black gram, green gram, cotton, pigeon pea, pearl millet, turmeric, sugarcane, orchards and vegetables in **Marathwada**.
- **Gujarat** - In **South Gujarat Heavy Rainfall Zone**, make arrangements to drain out excess water from rice, sugarcane, vegetables and tuber crops. Give mechanical support to sugarcane.
- In **Madhya Pradesh**, provide adequate drainage in the fields of maize, soybean, cotton and vegetables in **Satpura Plateau Zone**; soybean, maize and vegetables in **Malwa Plateau Zone**; rice, soybean, maize, sugarcane and vegetables in **Central Narmada Valley Zone**; soybean, pigeon pea, cotton and vegetables in **Nimar Valley Zone**; and maize, soybean, black gram, cotton, and pigeon pea in **Vindhyan Plateau Zone**.
- In **Telangana**, provide adequate drainage to drain out excess water in fields of rice, cotton, maize, soybean, pigeon pea, turmeric, vegetables in **Northern Telangana Zone**; and from rice, cotton, soybean, vegetables and vegetable nurseries in **Southern Telangana Zone**.
- In **Andhra Pradesh**, make arrangements to drain out excess water from maize, cotton, sugarcane, paddy, mesta, red gram, green gram, black gram and groundnut fields in **North Coastal Zone**; rice, maize and vegetable fields in **High Altitude Tribal Zone**.
- In **Odisha**, make arrangements to drain out excess water from maize and cotton fields in **North Eastern Ghat Zone**.
- In **Chhattisgarh**, make arrangements to drain out excess water from fields of *kharif* maize, rice, minor millets, pulses and vegetables in **Bastar Plateau Zone**.
- In **Uttarakhand**, maintain proper drainage channels in fields of sown green gram, black gram, sugarcane, groundnut, sesame and vegetables in **Bhabar and Tarai Zon**; soybean, maize, pulses, finger millet, ginger and vegetable fields and fruit orchards in **Hill Zone**; and barnyard millet, finger millet and already sown green gram in **Sub Humid Sub Tropic Zone**.

- In **Himachal Pradesh**, maintain proper drainage channels in ginger, turmeric and maize fields in **Mid Hills Sub Humid Zone** and rice, maize and vegetable fields in **Sub Montane and Low Hills Sub Tropical Zone**. Undertake harvesting of ripened tomatoes in **High Hills Sub Temperate Wet Zone**.

### **Livestock / Fishery**

- Keep the animals inside the shed during heavy rainfall and provide them balanced feed.
- Store feed and fodder in a safe place to prevent spoilage.
- Construct an outlet with proper netting around the ponds to drain out excess water, thereby preventing fish from escaping in case of overflow.

### **Agromet advisories for likely impact of Thunderstorm / Gusty Winds / Squally Winds**

#### **(Based on the IBF and advisories issued by different AMFUs)**

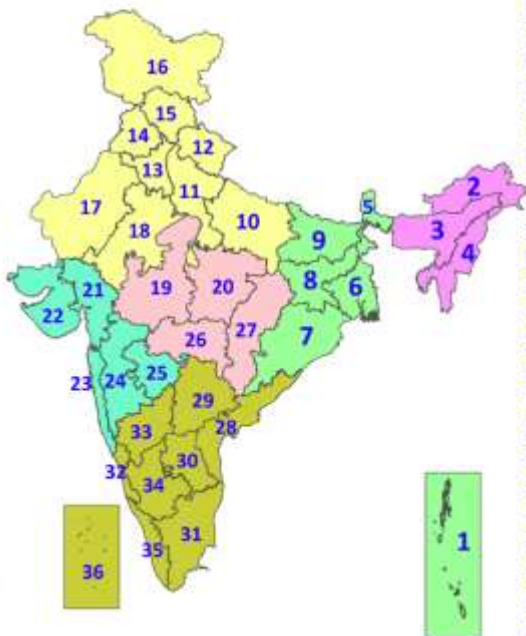
- Provide mechanical support to horticultural crops and staking or support to vegetables and young fruit plants / fruit-bearing plants to avoid lodging due to strong winds.

### **Legends & abbreviations:**

- ❖ **Heavy Rain:**64.5-115.5mm; **Very Heavy Rain:**115.6-204.4mm; **Extremely Heavy Rain:** >204.4mm.
- ❖ **Obsy:** Observatory; **Automatic Weather Station;** **ARG:** Automatic Rain Gauge; **dist:** District; **NH:** National Highway; **KVK:** Krishi Vigyan Kendra; **DVC:** Damodar Valley Corporation; **PTO:** Part Time Office, **Aero:** Aerodrome, **IAF:** Indian Air Force.
- ❖ **Region wise classification of meteorological Sub-Divisions:**
  - **Northwest India:** Western Himalayan Region (Jammu-Kashmir-Ladakh-Gilgit-Baltistan-Muzaffarabad, Himachal Pradesh and Uttarakhand); Punjab, Haryana-Chandigarh-Delhi; West Uttar Pradesh, East Uttar Pradesh, West Rajasthan and East Rajasthan.
  - **Central India:** West Madhya Pradesh, East Madhya Pradesh, Vidarbha and Chhattisgarh.
  - **East India:** Bihar, Jharkhand, Sub-Himalayan West Bengal & Sikkim; Gangetic West Bengal, Odisha and Andaman & Nicobar Islands.
  - **Northeast India:** Arunachal Pradesh, Assam & Meghalaya and Nagaland, Manipur, Mizoram & Tripura.
  - **West India:** Gujarat Region, Saurashtra & Kutch, Konkan & Goa, Madhya Maharashtra and Marathawada.
  - **South India:** Coastal Andhra Pradesh & Yanam, Telangana, Rayalaseema, Coastal Karnataka, North Interior Karnataka, South Interior Karnataka, Kerala & Mahe, Tamil Nadu, Puducherry & Karaikal and Lakshadweep.

## LEGENDS

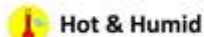
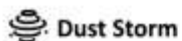
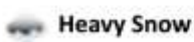
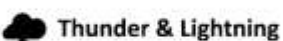
1. अंडमान और निकोबार द्वीपसमूह
2. अरुणाचल प्रदेश
3. असम और मेघालय
4. नागालैंड, मणिपुर, मिजोरम और त्रिपुरा
5. उप-हिमालयी पश्चिम बंगाल और सिक्किम
6. गंगीय पश्चिम बंगाल
7. ओडिशा
8. झारखंड
9. बिहार
10. पूर्वी उत्तर प्रदेश
11. पश्चिम उत्तर प्रदेश
12. उत्तराखंड
13. हरियाणा, चंडीगढ़ और दिल्ली
14. पंजाब
15. हिमाचल प्रदेश
16. जम्मू और कश्मीर और लद्दाख
17. पश्चिम राजस्थान
18. पूर्वी राजस्थान
19. पश्चिम मध्य प्रदेश
20. पूर्वी मध्य प्रदेश
21. गुजरात
22. सौराष्ट्र
23. कोंकण और गोवा
24. मध्य महाराष्ट्र
25. मराठवाड़ा
26. विदर्भ
27. छत्तीसगढ़
28. तटीय आंध्र प्रदेश और यनम
29. तेलंगाना
30. रायलसीमा
31. तमिलनाडु, पुडुचेरी और कराईकल
32. तटीय कर्नाटक
33. आंतरिक उत्तरी कर्नाटक
34. आंतरिक दक्षिणी कर्नाटक
35. केरल और माहे
36. लक्षद्वीप



1. Andaman & Nicobar Islands
2. Arunachal Pradesh
3. Assam & Meghalaya
4. Nagaland, Manipur, Mizoram & Tripura
5. Sub-Himalayan West Bengal & Sikkim
6. Gangetic West Bengal
7. Odisha
8. Jharkhand
9. Bihar
10. East Uttar Pradesh
11. West Uttar Pradesh
12. Uttarakhand
13. Haryana, Chandigarh & Delhi
14. Punjab
15. Himachal Pradesh
16. Jammu & Kashmir and Ladakh
17. West Rajasthan
18. East Rajasthan
19. West Madhya Pradesh
20. East Madhya Pradesh
21. Gujarat
22. Saurashtra
23. Konkan & Goa
24. Madhya Maharashtra
25. Marathwada
26. Vidarbha
27. Chhattisgarh
28. Coastal Andhra Pradesh & Yanam
29. Telangana
30. Rayalaseema
31. Tamilnadu, Puducherry & Karaikal
32. Coastal Karnataka
33. North Interior Karnataka
34. South Interior Karnataka
35. Kerala & Mahe
36. Lakshadweep

## SPATIAL DISTRIBUTION (% of Stations reporting)

% Stations	Category	% Stations	Category
76-100	Widespread (WS/Most Places)	26-50	Scattered (SCT/A Few Places)
51-75	Fairly Widespread (FWS/Many Places)	1-25	Isolated (ISOL)



### COLOUR CODED WARNING

No Warning (No Action)
Watch (Be Aware)
Alert (Be Prepared To Take Action)
Warning (Take Action)

### Probabilistic Forecast

Terms	Probability of Occurrence (%)
Unlikely	< 25
Likely	25 - 50
Very Likely	50 - 75
Most Likely	> 75

\* Red colour warning does not mean "Red Alert", Red colour warning means "Take Action".  
Forecast and Warning for any day is valid from 0830 hours IST of day till 0830 hours IST of next day.  
For more details, kindly visit <https://mausam.imd.gov.in> or contact: 011-2434-4599  
(Service to the Nation since 1875)

### DEFINITION/CRITERIA

#### Rain/ Snow \*

Heavy: 64.5 to 115.5 mm/cm \*  
Very Heavy: 115.6 to 204.4 mm/cm \*  
Extremely Heavy: > 204.4 mm/cm \*

#### Heat Wave

When maximum temperature of a station reaches  $\geq 40^{\circ}\text{C}$  for plains and  $\geq 30^{\circ}\text{C}$  for hilly regions  
(a) Based on Departure from normal

Heat Wave: Maximum Temperature Departure from normal  $4.5^{\circ}\text{C}$  to  $6.4^{\circ}\text{C}$ .

Severe Heat Wave: Maximum Temperature Departure from normal  $\geq 6.5^{\circ}\text{C}$

(b). Based on Actual maximum temperature

Heat Wave: When actual maximum temperature  $\geq 45^{\circ}\text{C}$ .

Severe Heat Wave: When actual maximum temperature  $\geq 47^{\circ}\text{C}$ .

(c). Criteria for heat wave for coastal stations

When maximum temperature departure is  $> 4.5^{\circ}\text{C}$  from normal. Heat Wave may be described provided maximum temperature  $\geq 37^{\circ}\text{C}$ .

#### Warm Night

When maximum temperature remains  $40^{\circ}\text{C}$

Warm Night: When minimum temperature departure  $4.5^{\circ}\text{C}$  to  $6.4^{\circ}\text{C}$ .

Severe Warm Night: When minimum temperature departure  $> 6.4^{\circ}\text{C}$ .

#### Cold Wave

When minimum temperature of a station  $\leq 10^{\circ}\text{C}$  for plains and  $\leq 0^{\circ}\text{C}$  for hilly regions.

(a). Based on departure

Cold Wave: Minimum Temperature Departure from normal  $-4.5^{\circ}\text{C}$  to  $-6.4^{\circ}\text{C}$ .

Severe Cold Wave: Minimum Temperature Departure from normal  $\leq -6.5^{\circ}\text{C}$

(b) Based on actual Minimum Temperature (for Plains only)

Cold Wave: When Minimum Temperature is  $\leq 4.0^{\circ}\text{C}$

Severe Cold Wave: When Minimum Temperature is  $\leq 2.0^{\circ}\text{C}$

(c) For Coastal Stations

When Minimum Temperature departure is  $\leq -4.5^{\circ}\text{C}$  & actual Minimum Temperature is  $\leq 15^{\circ}\text{C}$

#### Cold Day

When minimum temperature of a station  $\leq 10^{\circ}\text{C}$  for plains and  $\leq 0^{\circ}\text{C}$  for hilly regions

Based on departure

Cold Day: Maximum Temperature Departure from normal  $-4.5^{\circ}\text{C}$  to  $-6.4^{\circ}\text{C}$ .

Severe Cold Day: Maximum Temperature Departure from normal  $\leq -6.5^{\circ}\text{C}$

#### Fog

Phenomenon of small droplets suspended in air and the horizontal visibility  $< 1\text{km}$

Moderate Fog: When the visibility between 500-200 metres

Dense Fog: when the visibility between 50- 200 metres

Very Dense Fog: when the visibility  $< 50$  metres

#### Thunderstorm

Sudden electrical discharges manifested by a flash of light (Lightning) and a sharp rumbling sound (thunder)

#### Dust/Sand Storm

An ensemble of particles of dust or sand energetically lifted to great heights by a strong and turbulent wind.

#### Frost

Ice deposits on ground

Air temperature  $\leq 4^{\circ}\text{C}$  ( over Plains)

#### Squall

A strong wind that rises suddenly, lasts for atleast 1 minute.

Moderate: Wind speed 52-61 kmph

Severe: Wind speed 62-67 kmph

Very Severe: Wind speed  $> 67$  kmph

#### Sea State

Effect of various waves in the sea over specific area

Rough to very rough: Wind speed 41-62 kmph (22-33 knots) & Wave height 2.5-6 metre

High to very high: Wind speed 63-117 kmph ( 34-63 knots) & Wave height 6-14 metre

Phenomenal: Wind speed  $> 117$  kmph ( $> 63$  knots) & Wave height  $> 14$  metre

#### Cyclone

Cyclonic Storm: Wind speed 62-87 kmph (34-47 knots)

Severe Cyclonic Storm: Wind speed 88-117 kmph (48-63 knots)

Very Severe Cyclonic Storm: Wind speed 118-165 kmph (64 - 89 knots)

Extremely Severe Cyclonic Storm: Wind speed 166-220 kmph (90 -119 knots)

Super Cyclone Storm: Wind speed  $> 220$  kmph ( $> 119$  knots)

\* Red colour warning does not mean "Red Alert", Red colour warning means "Take Action".

Forecast and Warning for any day is valid from 0830 hours IST of day till 0830 hours IST of next day.

For more details, kindly visit <https://mausam.imd.gov.in> or contact: 011-2434-4599

(Service to the Nation since 1875)

**Hot and Humid:** When maximum temperatures remain  $3^{\circ}\text{C}$  above normal along with the above normal relative humidity.