



Government of India
Ministry of Earth Sciences
India Meteorological Department



Press Release

Date: 18th September, 2025

Time of Issue: 1315 hours IST

Subject: Heavy to very heavy rainfall likely to continue over Uttarakhand, Sub-Himalayan West Bengal & Sikkim for today, the 18th; Andaman & Nicobar Islands for next two days and Assam & Meghalaya for 22nd September, 2025.

Realised weather during past 24 hours till 0830 hours IST of today, the 18th September, 2025:

- ❖ **Very heavy rainfall (12-20 cm)** has been recorded at isolated places over Himachal Pradesh, Uttarakhand, East Madhya Pradesh, Sub-Himalayan West Bengal, Bihar, Meghalaya, Telangana and Rayalaseema.
- ❖ **Heavy rainfall (7-11 cm)** has been recorded at isolated places over Haryana, Uttar Pradesh, West Madhya Pradesh, Assam, Odisha, Gujarat Region, Konkan, Madhya Maharashtra, Karnataka and Tamil Nadu.

For more details of realised weather, kindly refer **Annexure I**.

Withdrawal of southwest Monsoon:

- ❖ The line of withdrawal of the southwest monsoon continues to pass through 31°N/74°E, Bhatinda, Fatehabad, Pilani, Ajmer, Deesa, Bhuj and 23°N/68°E. (**Annexure II**)

i. Weather Systems, Forecast and Warnings (refer to Annexure III & IV):

- ❖ An upper air **cyclonic circulation** lies over east Bihar and another over northeast Assam in lower tropospheric levels.
- ❖ An upper air **cyclonic circulation** lies over Marathwada in lower tropospheric levels and a **trough** runs from central parts of South Uttar Pradesh to upper air cyclonic circulation over Marathwada in lower tropospheric levels.
- ❖ A **trough** runs south Maharashtra coast to Westcentral & southwest Bay of Bengal in lower tropospheric levels.
- ❖ An upper air **cyclonic circulation** lies over South Interior Karnataka in middle tropospheric levels.

Under the influence of these systems, the following weather is likely:

East & Central India:

- ❖ Light to moderate rain/thunderstorm at most/many places with isolated **heavy rainfall** likely over East Madhya Pradesh on 18th; West Madhya Pradesh on 18th & 19th; Andaman & Nicobar Islands, Sub-Himalayan West Bengal & Sikkim, Bihar during 18th-20th September with isolated **very heavy falls over Andaman & Nicobar Islands on 18th & 19th and Sub-Himalayan West Bengal & Sikkim on 18th September.**
- ❖ Thunderstorm & gusty winds (speed reaching 30-40 kmph) very likely over East India during next 5-6 days.

Northeast India:

- ❖ Light/moderate rain/thunderstorm at many/some places with isolated **heavy rainfall** likely over Arunachal Pradesh during 18th-20th; Assam & Meghalaya during 18th-24th and Nagaland, Manipur, Mizoram & Tripura during 19th-24th September with isolated **very heavy falls over Assam & Meghalaya on 22nd September.**

Northwest India:

- ❖ Light to moderate rain/thunderstorm at some/isolated places with **isolated heavy rainfall** likely over Himachal Pradesh, Uttar Pradesh on 18th; Uttarakhand on 18th & 19th September with isolated **very heavy falls over Uttarakhand on 18th September.**

South Peninsular India:

- ❖ Light to moderate rain/thunderstorm at many/some places with isolated **heavy rainfall** likely over Kerala & Mahe, Rayalaseema, Telangana, Karnataka on 18th and Tamil Nadu on 18th, 19th & 21st September.
- ❖ Strong surface winds (speed reaching 30-40 kmph) very likely over Coastal Andhra Pradesh & Yanam and Rayalaseema during next 5 days.

West India:

- ❖ Light to moderate rain/thunderstorm at many/some places likely over the region during next 5 days with **isolated heavy rainfall** likely over Konkan, Madhya Maharashtra on 18th and Goa on 18th & 19th September.

Fishermen warning:

Fishermen are advised not to venture into the following areas during 18th to 23rd September:

Arabian Sea (AS):

- Some parts of westcentral, southwest Arabian Sea, along and off Somalia coast during 18th to 23rd September; along and off north Oman & adjoining sea areas during 18th to 21st; along and off south Konkan, Goa coasts, adjoining sea area on 18th September.

Bay of Bengal (BoB):

- Along and off south Sri Lanka coast and adjoining some parts of southwest Bay of Bengal during 18th & 20th September & along and off Sri Lanka coast, adjoining southwest Bay of Bengal during 20th to 23rd September; some parts of southwest and adjoining southeast Bay of Bengal on 18th September; many parts of south Bay of Bengal during 19th to 22nd September; many parts of southwest & adjoining southeast Bay of Bengal on 22nd; Gulf of Mannar & adjoining Comorin area during 18th to 23rd; over Andaman Sea during 18th to 22nd September.

ii. Weather conditions and forecast over Delhi/NCR during 18th September to 21st September, 2025 (Annexure V)

For more details, kindly refer National Weather Bulletin:

https://mausam.imd.gov.in/responsive/all_india_forecast_bulletin.php

For District wise warnings refer: <https://mausam.imd.gov.in/responsive/districtWiseWarningGIS.php>

For Fishermen warning refer <https://rsmcnewdelhi.imd.gov.in/fishermen-warning.php>

Rainfall recorded (in cm) during past 24 hours till 0830 hours IST of today, the 18th September (≥ 7 cm):

- ❖ **Assam & Meghalaya:** Williamnagar (dist East Garo Hills) 19, Williamnagar_Aws (dist East Garo Hills) 14, Bhaghmara (dist South Garo Hills) 8, Dhemaji (dist Dhemaji) 8, Chouldhuwaghat Arg (dist Lakhimpur) 7;
- ❖ **Uttarakhand:** Narendranagar (dist Garhwal Tehri) 17, Mussoorie (dist Dehradun) 12, Sama (dist Bageshwar) 9, Dehra Dun (dist Dehradun) 8, Bhagwanpur (dist Hardwar) 7, Haripur (dist Dehradun) 7;
- ❖ **Telangana:** Amberpet (dist Hyderabad) 15, Wargal (dist Siddipet) 11, Hyderabad A.p. (dist Hyderabad) 11, Golkonda(arg) (dist Hyderabad) 10, Shekpet (dist Hyderabad) 10, Kaveri_siddipet(a) (dist Siddipet) 10, Himayatnagar (dist Hyderabad) 10, Metpalle (dist Jagtial) 8, Kandi(a) (dist Sangareddy) 7, Atmakur M (dist Y. Bhuvanagiri) 7;
- ❖ **Himachal Pradesh:** Naina Davi (dist Bilaspur) 14, Bilaspur Sadar (dist Bilaspur) 12, Kahu (dist Bilaspur) 9, Nahan (dist Sirmaur) 8;
- ❖ **East Madhya Pradesh:** Jaisingh Nagar (dist Shahdol) 13, Hatta (dist Damoh) 10;
- ❖ **Sub-Himalayan West Bengal:** Dharala Valley Tea Esta (dist Jalpaiguri) 13, Ghatia T.e. (dist Jalpaiguri) 10, Aryaman Tea Estate (dist Alipurduar) 10, Mahua Tea Estate Arg (dist Alipurduar) 7, Oodlabari Tea Estate (dist Jalpaiguri) 7, Toorsa Tea Garden (dist Alipurduar) 7;
- ❖ **Rayalaseema:** Proddutur (dist Ysr District) 12, Cuddapah (dist Ysr District) 12, Chilamathur (dist Sri Sathyasai District) 9, Thambalapalle (dist Annamayya District) 9, Sambepalle (dist Annamayya District) 8, Raju Palem (dist Ysr District) 8, Pulivendla (dist Ysr District) 8, Vallur (dist Ysr District) 8, Kamalapuram (dist Ysr District) 8, Allagadda (dist Nandyal) 7, Lepakshi (dist Sri Sathyasai District) 7, Vempalle (dist Ysr District) 7;
- ❖ **Bihar:** Supaul (dist Supaul) 12, Dumra (dist Sitamarhi) 12, Bathnaha (dist Sitamarhi) 9, Tribeni/balmikinagar (dist West Champaran) 8, Saulighat (dist Madhubani) 8, Nawkothe (dist Begusarai) 7, Dhengbridge (dist Sitamarhi) 7;
- ❖ **East Uttar Pradesh:** Mirzapur Cwc (dist Mirzapur) 11, Akbarpur Fmo (dist Ambedkar Nagar) 9, Lucknow (hs) (dist Lucknow) 9, Fatehpur Tehsil (dist Barabanki) 7, Patti (dist Pratapgarh) 7;
- ❖ **Haryana:** Tajewala (dist Yamuna Nagar) 11, Partapnagar Rev (dist Yamuna Nagar) 10;
- ❖ **West Uttar Pradesh:** Mawana (dist Meerut) 9, Jansath (dist Muzaffarnagar) 7;
- ❖ **West Madhya Pradesh:** Multai (dist Betul) 9, Pithampur (dist Dhar) 8, Sultanpur (dist Raisen) 8, Itarsi (dist Narmadapuram) 8, Hatod (dist Indore) 7, Kolar (dist Bhopal) 7, Mahidpur (dist Ujjain) 7, Navibagh Aet (dist Bhopal) 7, Ghatiya (dist Ujjain) 7, Jawar (dist Sehore) 7, Bhainsdehi (dist Betul) 7;
- ❖ **North Interior Karnataka:** Kakkeri (dist Yadgir) 9, Kembhavi (dist Yadgir) 9, Yedrami (dist Kalaburgi) 9, Mudgal (dist Raichur) 7;
- ❖ **South Interior Karnataka:** Gubbi (dist Tumakuru) 8, Yelahanka (dist Bengaluru Urban) 7;
- ❖ **Odisha:** Aul (dist Kendrapara) 8, Samakhunta (dist Mayurbhanj) 7;
- ❖ **Tamil Nadu:** Uthukottai (dist Tiruvallur) 8, Tiruppur South (dist Tiruppur), Alangayam (dist Tirupathur), Chinnakalar (dist Coimbatore) 7 each;
- ❖ **Madhya Maharashtra:** Trimbakshwar (dist Nashik) 8;
- ❖ **Gujarat Region:** Surat city (dist Surat) 7;
- ❖ **Konkan:** Guhagarh (dist Ratnagiri) 7;
- ❖ **Coastal Karnataka:** Belthangadi (dist Dakshina Kannada) 7, Siddapura (dist Udupi) 7.

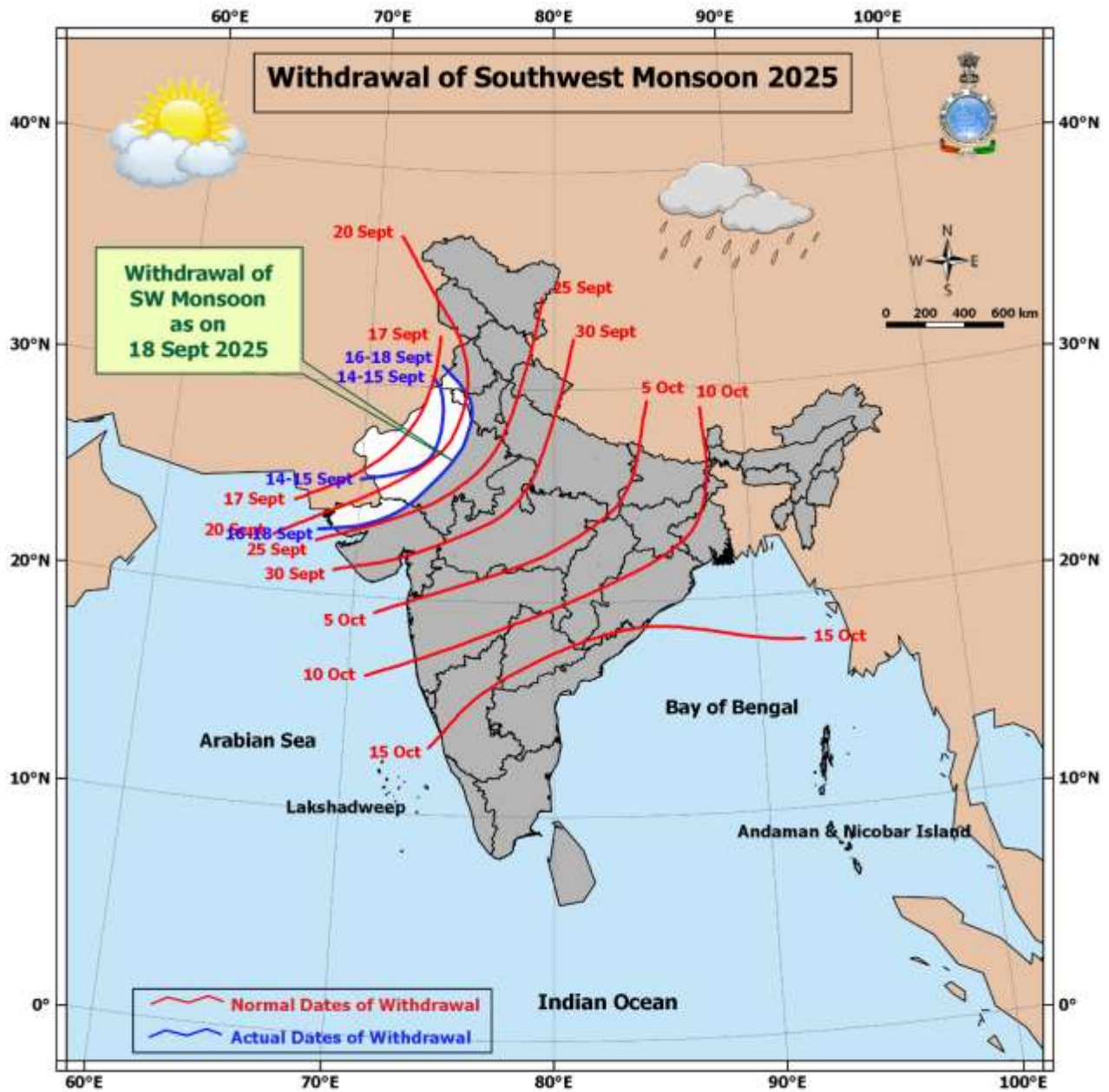
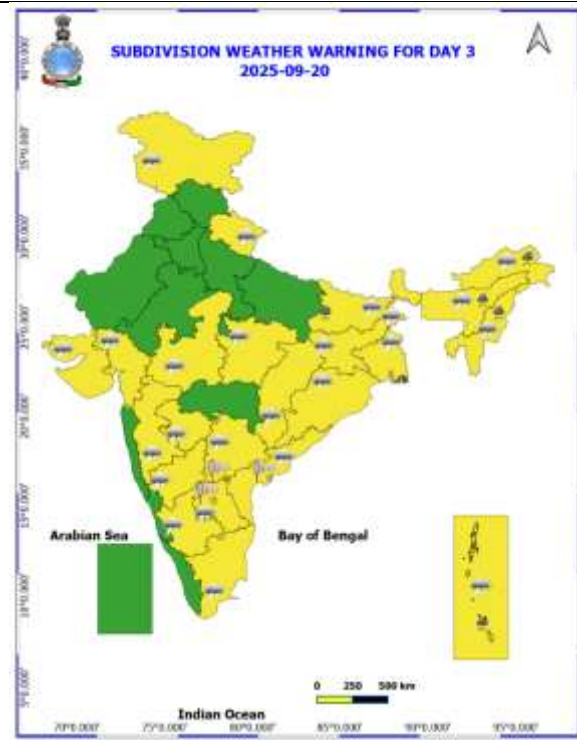
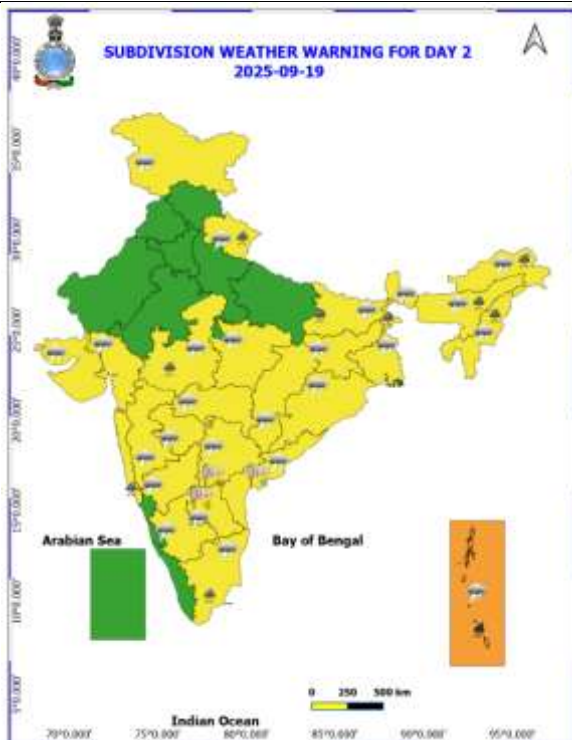
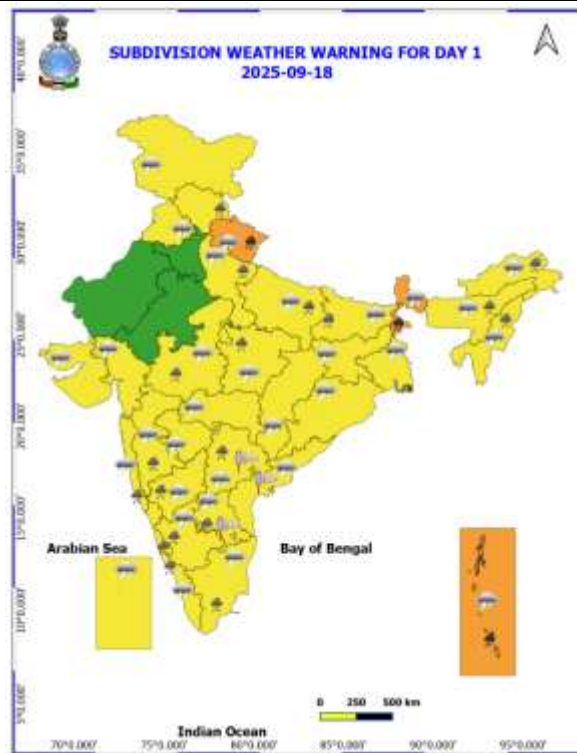
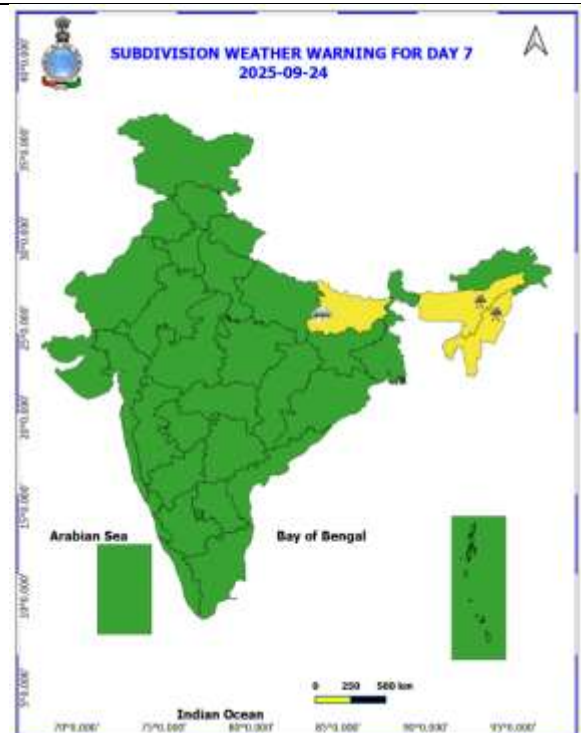
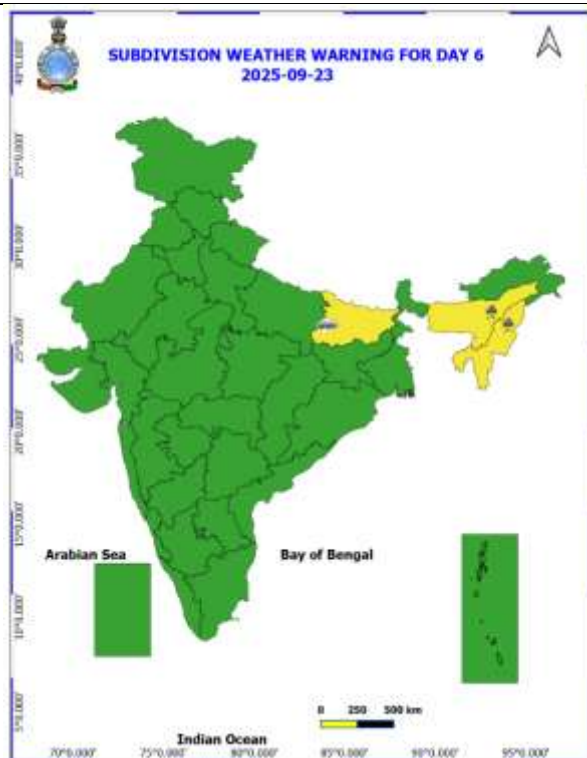
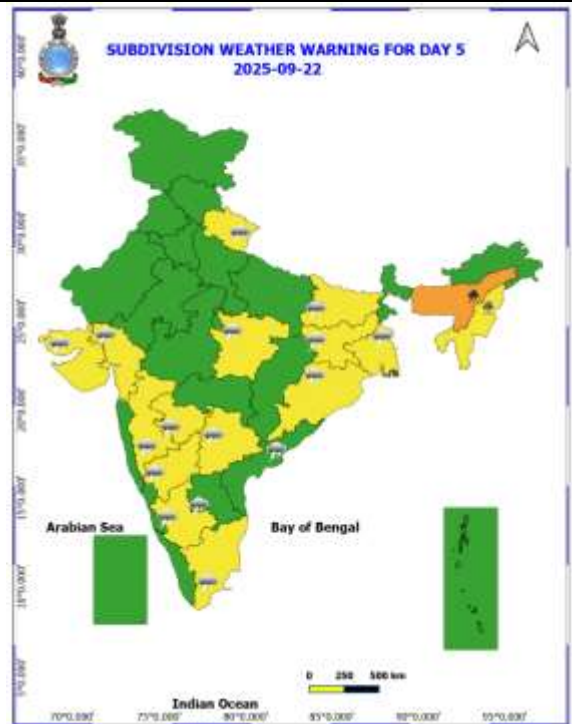
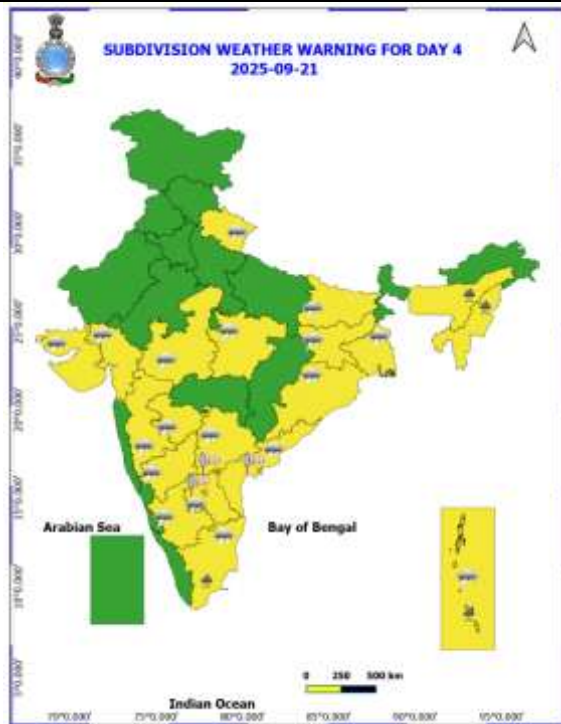


Table-1								
7 Days Rainfall Forecast								
S.No.	Subdivision	18- Sep	19- Sep	20- Sep	21- Sep	22- Sep	23- Sep	24- Sep
		Day 1	Day 2	Day 3	Day 4	Day 5	Day 6	Day 7
1	ANDAMAN & NICOBAR ISLANDS	FWS	FWS	FWS	FWS	FWS	FWS	FWS
2	ARUNACHAL PRADESH	SCT	SCT	SCT	SCT	SCT	SCT	SCT
3	ASSAM & MEHGHALAYA	FWS	FWS	FWS	FWS	SCT	SCT	SCT
4	NAGALAND, MANIPUR, MIZORAM AND TRIPURA	SCT	SCT	FWS	FWS	FWS	FWS	FWS
5	SUB HIMALAYAN WEST BENGAL & SIKKIM	FWS	FWS	FWS	FWS	FWS	FWS	FWS
6	GANGETIC WEST BENGAL	FWS	FWS	SCT	SCT	SCT	SCT	SCT
7	ODISHA	ISOL	ISOL	ISOL	ISOL	FWS	FWS	SCT
8	JHARKHAND	FWS	SCT	SCT	FWS	FWS	FWS	FWS
9	BIHAR	FWS	FWS	FWS	SCT	SCT	SCT	SCT
10	EAST UTTAR PRADESH	FWS	SCT	ISOL	ISOL	ISOL	ISOL	ISOL
11	WEST UTTAR PRADESH	SCT	ISOL	DRY	DRY	DRY	DRY	DRY
12	UTTARAKHAND	FWS	FWS	SCT	SCT	SCT	SCT	SCT
13	HARYANA, CHANDIGARH & DELHI	ISOL	ISOL	DRY	DRY	DRY	DRY	DRY
14	PUNJAB	ISOL	ISOL	DRY	DRY	DRY	DRY	DRY
15	HIMACHAL PRADESH	SCT	ISOL	ISOL	ISOL	ISOL	ISOL	ISOL
16	JAMMU AND KASHMIR AND LADAKH	SCT	SCT	DRY	DRY	DRY	DRY	DRY
17	WEST RAJASTHAN	DRY	DRY	DRY	DRY	DRY	DRY	DRY
18	EAST RAJASTHAN	ISOL	ISOL	ISOL	ISOL	ISOL	DRY	DRY
19	WEST MADHYA PRADESH	FWS	FWS	FWS	SCT	SCT	SCT	SCT
20	EAST MADHYA PRADESH	FWS	FWS	SCT	SCT	SCT	SCT	SCT
21	GUJRAT REGION	SCT	FWS	FWS	FWS	SCT	SCT	SCT
22	SAURASHTRA & KUTCH	ISOL	SCT	SCT	ISOL	ISOL	ISOL	ISOL
23	KONKAN & GOA	FWS	FWS	SCT	SCT	FWS	FWS	FWS
24	MADHYA MAHARASHTRA	FWS	SCT	ISOL	ISOL	SCT	SCT	SCT
25	MARATHWADA	SCT	SCT	ISOL	SCT	FWS	SCT	ISOL
26	VIDARBHA	FWS	FWS	SCT	SCT	SCT	SCT	SCT
27	CHHATTISGARH	SCT	SCT	SCT	SCT	SCT	FWS	FWS
28	COASTAL ANDHRA PRADESH	SCT	SCT	SCT	SCT	FWS	FWS	FWS
29	TELANGANA	FWS	FWS	FWS	FWS	FWS	SCT	SCT
30	RAYALASEEMA	FWS	SCT	SCT	SCT	SCT	SCT	SCT
31	TAMILNADU & PUDUCHERRY	FWS	SCT	SCT	SCT	ISOL	ISOL	ISOL
32	COSTAL KARNATAKA	FWS	FWS	FWS	FWS	FWS	FWS	FWS
33	NORTH INTERIOR KARNATAKA	FWS	FWS	FWS	FWS	FWS	FWS	FWS
34	SOUTH INTERIOR KARNATAKA	FWS	FWS	FWS	FWS	FWS	FWS	FWS
35	KERALA AND MAHE	FWS	SCT	SCT	SCT	FWS	FWS	FWS
36	LAKSHADWEEP	FWS	SCT	SCT	SCT	FWS	FWS	FWS

- As the lead period increases forecast accuracy decrease.





- Action may be taken based on ORANGE AND REDCOLOUR warnings.
- Vulnerable regions likely urban and hilly areas action may be initiated for heavy rainfall warning.
- As the lead period increases forecast accuracy decreases.

Detailed districtwise Multi Hazard weather warning for next five days available at
<https://mausam.imd.gov.in/responsive/districtWiseWarningGIS.php>

Weather forecast over Delhi/NCR during 18th to 21st September 2025**Past Weather:**

There has been no large change in the minimum temperature and fall in maximum temperature up to 1°C over Delhi/NCR during the past 24 hours. The maximum and minimum temperatures over Delhi were around 34 to 35°C and 24 to 25°C respectively. The minimum and maximum temperatures were near normal. Partly cloudy sky conditions with predominant surface wind from the northwest/southeast direction with wind speeds up to 16 kmph prevailed during the past 24 hours. Light rain/thundershowers at few places with moderate rain at isolated places has been recorded in Delhi. Partly cloudy sky conditions with a wind speed of less than 10 kmph from the southeast direction prevailed over the region in the forenoon today.

Weather Forecast:

18.09.2025: Partly cloudy sky. One or two spells of very light to light rain likely at few places towards afternoon/evening. The maximum and minimum temperatures over Delhi are likely to be in the range of 33 to 35°C. The maximum temperature will be near normal. The predominant surface wind will likely to be from the southeast direction with a wind speed of up to 10-15 kmph during afternoon hours. The wind speed will decrease becoming less than 12 kmph from the southeast direction during the evening and night.

19.09.2025: Partly cloudy sky. Possibility of one or two spells of very light to light rain likely at isolated places. The maximum and minimum temperatures over Delhi are likely to be in the range of 33 to 35°C and 23 to 25°C respectively. The minimum temperature will be near normal and the maximum temperature will be near normal. The predominant surface wind will likely to be from the southeast direction with a wind speed of up to 08-12 kmph during morning hours. The wind speed will gradually increase becoming less than 15 kmph from the northwest direction in the afternoon. The wind speed will decrease becoming less than 12 kmph from the northeast direction during the evening and night.

20.09.2025: Partly cloudy sky. The maximum and minimum temperatures over Delhi are likely to be in the range of 34 to 36°C and 24 to 26°C respectively. The minimum temperature will be near normal and the maximum temperature will be above normal up to 1 - 2°C. The predominant surface wind will likely to be from the northwest direction with a wind speed of up to 10-15 kmph during morning hours. The wind speed will gradually increase becoming less than 18 kmph from the northwest direction in the afternoon. The wind speed will decrease becoming less than 10 kmph from the southwest direction during the evening and night.

21.09.2025: Mainly clear sky. The maximum and minimum temperatures over Delhi are likely to be in the range of 34 to 36°C and 24 to 26°C respectively. The minimum temperature will be near normal and the maximum temperature will be above normal up to 1 - 2°C. The predominant surface wind will likely to be from the northwest direction with a wind speed of up to 16-20 kmph during morning hours. The wind speed will gradually increase becoming less than 25 kmph from the northwest direction in the afternoon. The wind speed will decrease becoming less than 15 kmph from the northwest direction during the evening and night.

Impact & Action Suggested due to

❖ **Heavy to very heavy rainfall (12-20 cm)** at isolated places over Uttarakhand, Sub-Himalayan West Bengal & Sikkim on 18th; Andaman & Nicobar Islands on 18th & 19th and Assam & Meghalaya on 22nd September.

Impact Expected

- Localized Flooding of roads, water logging in low lying areas and closure of underpasses mainly in urban areas of the above region.
- Occasional reduction in visibility due to heavy rainfall.
- Disruption of traffic in major cities due to water logging in roads leading to increased travel time.
- Minor damage to kutchha roads.
- Possibilities of damage to vulnerable structure.
- Localized Landslides/Mudslides/landslips/mudslips/landsinks/mudsinks.
- Damage to horticulture and standing crops in some areas due to inundation.
- It may lead to riverine flooding in some river catchments (for riverine flooding please visit Web page of CWC)

Action Suggested

- Check for traffic congestion on your route before leaving for your destination.
- Follow any traffic advisories that are issued in this regard.
- Avoid going to areas that face the water logging problems often.
- Avoid staying in vulnerable structure.

Agromet advisories for likely impact of Heavy / Heavy to Very Heavy Rainfall

- In Uttarakhand, drain out excess water from the fields of green gram, black gram, soybean, barnyard millet and finger millet in Sub Humid Sub Tropic Zone; and pigeon pea and vegetable crops in Hill Zone. Ensure proper drainage from the fields of rice, maize, finger millet, pigeon pea, soybean, green gram, black gram and vegetables in Nainital district.
- In Himachal Pradesh, drain out excess water from the fields of vegetable and fruit orchards in Mid Hills Sub Humid Zone. Keep the harvested produce in safer places.
- In Sub-Himalayan West Bengal, drain out excess water from the fields of *rice* and vegetable in Terai Zone and ensure proper drainage from the fields of green gram, black gram, finger millet, dalley khorsani, vegetables and fruit orchards in Hill Zone.
- In Bihar, ensure proper drainage of excess rainwater from the fields of rice and vegetables in North West Alluvial Plain Zone.
- In West Madhya Pradesh, drain out excess water from the fields of rice, soybean, maize, cotton, sugarcane and vegetables.
- In Maharashtra, drain out excess water from fields of rice, vegetables and fruit orchards in Konkan and rice, sugarcane, pigeon pea, soybean, maize, vegetables and fruit orchards in Madhya Maharashtra.
- In Arunachal Pradesh, maintain proper drainage in standing crops such as rice, soybean, finger millet, vegetables and fruit orchards to avoid water stagnation. Keep the harvested produce of upland paddy, maize, chillies and banana at safer places.
- In Assam, ensure proper drainage to drain out excess water from the fields of rice and already sown black gram in Barak Valley Zone and rice, sesame and vegetables in North Bank Plain Zone. In Lower Brahmaputra Valley Zone, ensure proper drainage system in *Sali* rice fields and nursery bed of vegetables. Cover the nursery bed with thin polythene to avoid the damages due to heavy rainfall. In Upper Brahmaputra Valley Zone, harvest the matured vegetables and fruits and transfer it to a safer location and make arrangements to drain out excess water from the standing crop fields.
- In Meghalaya, drain out excess water from rice, vegetable nurseries and ginger. Provide support to tall and fragile crops like banana, papaya, pumpkin, etc. to prevent lodging.
- In Telangana, ensure adequate drainage facilities to drain out excess rain water in fields of rice, maize, cotton, soybean, pigeon pea, turmeric and vegetables.

Livestock / Fishery

- Keep the animals inside the shed during heavy rainfall and provide them balanced feed.
- Store feed and fodder in a safe place to prevent spoilage.
- Construct an outlet with proper netting around the ponds to drain out excess water, thereby preventing fish from escaping in case of overflow.

Agromet advisories for likely impact of Thunderstorm / Gusty Winds / Squally Winds

- Provide mechanical support to horticultural crops and staking or support to vegetables and young fruit plants / fruit-bearing plants to avoid lodging due to strong winds.

Legends & abbreviations:

- ❖ **Heavy Rain:**64.5-115.5mm; **Very Heavy Rain:**115.6-204.4mm; **Extremely Heavy Rain:** >204.4mm.
- ❖ **Obsy:** Observatory; Automatic Weather Station; **ARG:** Automatic Rain Gauge; **dist:** District; **NH:** National Highway; **KVK:** Krishi Vigyan Kendra; **DVC:** Damodar Valley Corporation; **PTO:** Part Time Office, **Aero:** Aerodrome, **IAF:** Indian Air Force.
- ❖ **Region wise classification of meteorological Sub-Divisions:**
 - **Northwest India:** Western Himalayan Region (Jammu-Kashmir-Ladakh-Gilgit-Baltistan-Muzaffarabad, Himachal Pradesh and Uttarakhand); Punjab, Haryana-Chandigarh-Delhi; West Uttar Pradesh, East Uttar Pradesh, West Rajasthan and East Rajasthan.
 - **Central India:** West Madhya Pradesh, East Madhya Pradesh, Vidarbha and Chhattisgarh.
 - **East India:** Bihar, Jharkhand, Sub-Himalayan West Bengal & Sikkim; Gangetic West Bengal, Odisha and Andaman & Nicobar Islands.
 - **Northeast India:** Arunachal Pradesh, Assam & Meghalaya and Nagaland, Manipur, Mizoram & Tripura.
 - **West India:** Gujarat Region, Saurashtra & Kutch, Konkan & Goa, Madhya Maharashtra and Marathawada.
 - **South India:** Coastal Andhra Pradesh & Yanam, Telangana, Rayalaseema, Coastal Karnataka, North Interior Karnataka, South Interior Karnataka, Kerala & Mahe, Tamil Nadu, Puducherry & Karaikal and Lakshadweep.

LEGENDS

1. अंडमान और निकोबार द्वीपसमूह

2. अरुणाचल प्रदेश

3. असम और मेघालय

4. नागालैंड, मणिपुर, मिजोरम और त्रिपुरा

5. उप-हिमालयी पश्चिम बंगाल और सिक्किम

6. गंगीय पश्चिम बंगाल

7. ओडिशा

8. झारखंड

9. बिहार

10. पूर्वी उत्तर प्रदेश

11. पश्चिम उत्तर प्रदेश

12. उत्तराखंड

13. हरियाणा, चंडीगढ़ और दिल्ली

14. पंजाब

15. हिमाचल प्रदेश

16. जम्मू और कश्मीर और लद्दाख

17. पश्चिम राजस्थान

18. पूर्वी राजस्थान

19. पश्चिम मध्य प्रदेश

20. पूर्वी मध्य प्रदेश

21. गुजरात

22. सौराष्ट्र

23. कोंकण और गोवा

24. मध्य महाराष्ट्र

25. मराठवाड़ा

26. विदर्भ

27. छत्तीसगढ़

28. तटीय आंध्र प्रदेश और यनम

29. तेलंगाना

30. रायलसीमा

31. तमिलनाडु, पुडुचेरी और कराईकल

32. तटीय कर्नाटक

33. आंतरिक उत्तरी कर्नाटक

34. आंतरिक दक्षिणी कर्नाटक

35. केरल और माहे

36. लक्षद्वीप



1. Andaman & Nicobar Islands

2. Arunachal Pradesh

3. Assam & Meghalaya

4. Nagaland, Manipur, Mizoram & Tripura

5. Sub-Himalayan West Bengal & Sikkim

6. Gangetic West Bengal

7. Odisha

8. Jharkhand

9. Bihar

10. East Uttar Pradesh

11. West Uttar Pradesh

12. Uttarakhand

13. Haryana, Chandigarh & Delhi

14. Punjab

15. Himachal Pradesh

16. Jammu & Kashmir and Ladakh

17. West Rajasthan

18. East Rajasthan

19. West Madhya Pradesh

20. East Madhya Pradesh

21. Gujarat

22. Saurashtra

23. Konkan & Goa

24. Madhya Maharashtra

25. Marathwada

26. Vidarbha

27. Chhattisgarh

28. Coastal Andhra Pradesh & Yanam

29. Telangana

30. Rayalaseema

31. Tamilnadu, Puducherry & Karaikal

32. Coastal Karnataka

33. North Interior Karnataka

34. South Interior Karnataka

35. Kerala & Mahe

36. Lakshadweep

SPATIAL DISTRIBUTION (% of Stations reporting)

% Stations	Category	% Stations	Category
76-100	Widespread (WS/Most Places)	26-50	Scattered (SCT/A Few Places)
51-75	Fairly Widespread (FWS/Many Places)	1-25	Isolated (ISOL)



Fog



Heavy Snow



Cold Wave



Heavy Rain



Dust Storm



Cold Day



Very Heavy Rain



Heat Wave



Ground Frost



Extremely Heavy Rain



Warm Night



Thunder & Lightning



Hot Day



Hailstorm



Hot & Humid



Dust Raising Winds



Strong Surface Winds

COLOUR CODED WARNING

No Warning (No Action)

Watch (Be Aware)

Alert (Be Prepared To Take Action)

Warning (Take Action)

Probabilistic Forecast

Terms	Probability of Occurrence (%)
Unlikely	< 25
Likely	25 - 50
Very Likely	50 - 75
Most Likely	> 75

* Red colour warning does not mean "Red Alert", Red colour warning means "Take Action".

Forecast and Warning for any day is valid from 0830 hours IST of day till 0830 hours IST of next day.

For more details, kindly visit <https://mausam.imd.gov.in> or contact: 011-2434-4599

(Service to the Nation since 1875)

DEFINITION/CRITERIA

Rain/ Snow *

Heavy: 64.5 to 115.5 mm/cm *
Very Heavy: 115.6 to 204.4 mm/cm *
Extremely Heavy: > 204.4 mm/cm *

Heat Wave

When maximum temperature of a station reaches $\geq 40^{\circ}\text{C}$ for plains and $\geq 30^{\circ}\text{C}$ for hilly regions
(a) Based on Departure from normal

Heat Wave: Maximum Temperature Departure from normal 4.5°C to 6.4°C .

Severe Heat Wave: Maximum Temperature Departure from normal $\geq 6.5^{\circ}\text{C}$

(b). Based on Actual maximum temperature

Heat Wave: When actual maximum temperature $\geq 45^{\circ}\text{C}$.

Severe Heat Wave: When actual maximum temperature $\geq 47^{\circ}\text{C}$.

(c). Criteria for heat wave for coastal stations

When maximum temperature departure is $> 4.5^{\circ}\text{C}$ from normal. Heat Wave may be described provided maximum temperature $\geq 37^{\circ}\text{C}$.

Warm Night

When maximum temperature remains 40°C

Warm Night: When minimum temperature departure 4.5°C to 6.4°C .

Severe Warm Night: When minimum temperature departure $> 6.4^{\circ}\text{C}$.

Cold Wave

When minimum temperature of a station $\leq 10^{\circ}\text{C}$ for plains and $\leq 0^{\circ}\text{C}$ for hilly regions.

(a). Based on departure

Cold Wave: Minimum Temperature Departure from normal -4.5°C to -6.4°C .

Severe Cold Wave: Minimum Temperature Departure from normal $\leq -6.5^{\circ}\text{C}$

(b) Based on actual Minimum Temperature (for Plains only)

Cold Wave: When Minimum Temperature is $\leq 4.0^{\circ}\text{C}$

Severe Cold Wave: When Minimum Temperature is $\leq 2.0^{\circ}\text{C}$

(c) For Coastal Stations

When Minimum Temperature departure is $\leq -4.5^{\circ}\text{C}$ & actual Minimum Temperature is $\leq 15^{\circ}\text{C}$

Cold Day

When minimum temperature of a station $\leq 10^{\circ}\text{C}$ for plains and $\leq 0^{\circ}\text{C}$ for hilly regions

Based on departure

Cold Day: Maximum Temperature Departure from normal -4.5°C to -6.4°C .

Severe Cold Day: Maximum Temperature Departure from normal $\leq -6.5^{\circ}\text{C}$

Fog

Phenomenon of small droplets suspended in air and the horizontal visibility $< 1\text{km}$

Moderate Fog: When the visibility between 500-200 metres

Dense Fog: when the visibility between 50- 200 metres

Very Dense Fog: when the visibility < 50 metres

Thunderstorm

Sudden electrical discharges manifested by a flash of light (Lightning) and a sharp rumbling sound (thunder)

Dust/Sand Storm

An ensemble of particles of dust or sand energetically lifted to great heights by a strong and turbulent wind.

Frost

Ice deposits on ground

Air temperature $\leq 4^{\circ}\text{C}$ (over Plains)

Squall

A strong wind that rises suddenly, lasts for atleast 1 minute.

Moderate: Wind speed 52-61 kmph

Severe: Wind speed 62-67 kmph

Very Severe: Wind speed > 67 kmph

Sea State

Effect of various waves in the sea over specific area

Rough to very rough: Wind speed 41-62 kmph (22-33 knots) & Wave height 2.5-6 metre

High to very high: Wind speed 63-117 kmph (34-63 knots) & Wave height 6-14 metre

Phenomenal: Wind speed > 117 kmph (> 63 knots) & Wave height > 14 metre

Cyclone

Cyclonic Storm: Wind speed 62-87 kmph (34-47 knots)

Severe Cyclonic Storm: Wind speed 88-117 kmph (48-63 knots)

Very Severe Cyclonic Storm: Wind speed 118-165 kmph (64 - 89 knots)

Extremely Severe Cyclonic Storm: Wind speed 166-220 kmph (90 -119 knots)

Super Cyclone Storm: Wind speed > 220 kmph (> 119 knots)

* Red colour warning does not mean "Red Alert", Red colour warning means "Take Action".

Forecast and Warning for any day is valid from 0830 hours IST of day till 0830 hours IST of next day.

For more details, kindly visit <https://mausam.imd.gov.in> or contact: 011-2434-4599

(Service to the Nation since 1875)

Hot and Humid: When maximum temperatures remain 3°C above normal along with the above normal relative humidity.