



**Government of India
Ministry of Earth Sciences
India Meteorological Department**



Press Release

Date: 23rd September, 2025

Time of Issue: 1315 hours IST

Subject: (i) A Low pressure area lies over coastal areas of Gangetic West Bengal and adjoining north Odisha & northwest Bay of Bengal and a fresh low-pressure area is likely to form over northwest & adjoining central Bay of Bengal around 25th September. Under the influence of these systems, heavy to very heavy rainfall likely over Gangetic West Bengal today, 23rd, Odisha till 26th, Coastal Andhra Pradesh and Telangana on 26th and 27th September 2025.

(ii) A fresh spell of heavy to very heavy rainfall likely over Konkan & Goa and Ghat areas of Madhya Maharashtra during 25th to 29th September, 2025.

Realised weather during past 24 hours till 0830 hours IST of today, the 23rd September, 2025:

- ❖ **Extremely heavy rainfall** has been recorded at isolated places over Gangetic West Bengal.
 - ❖ **Very heavy rainfall (12-20 cm)** has been recorded at isolated places over Telangana, Madhya Maharashtra and Gujarat Region.
 - ❖ **Heavy rainfall (7-11 cm)** has been recorded at isolated places over Interior Karnataka, Konkan, Marathawada, Saurashtra, Odisha, Jharkhand, Bihar, West Madhya Pradesh, Sub-Himalayan West Bengal and Nagaland.
- For more details of realised weather, kindly refer [Annexure I](#).**

Withdrawal of southwest Monsoon:

- ❖ The line of withdrawal of southwest monsoon continue to pass through 32°N/ 74°E, Tarn Taran, Sangrur, Jind, Rewari, Tonk, Mahesana, Porbandar, 21°N/68°E.
- ❖ Conditions are becoming favourable for further withdrawal of southwest monsoon from some more parts of Gujarat, Rajasthan, Haryana and Punjab; some parts of Uttar Pradesh, Delhi, Himachal Pradesh, Jammu & Kashmir during next 24 hours. ([Annexure II](#))

i. Weather Systems, Forecast and Warnings (refer to [Annexure III & IV](#)):

- ❖ The low-pressure area lay over coastal areas of Gangetic West Bengal and adjoining north Odisha & northwest Bay of Bengal at 0830 hrs IST of today, the 23rd Sept 2025. It is likely to persists over the same region during next 24 hours and become less marked thereafter.
- ❖ A trough runs from the cyclonic circulation associated with the Low-Pressure area over coastal areas of Gangetic West Bengal and adjoining north Odisha & northwest Bay of Bengal to Telangana across Odisha in lower tropospheric levels.
- ❖ Another trough runs from the upper air cyclonic circulation associated with the Low- Pressure area over coastal areas of Gangetic West Bengal and adjoining north Odisha & northwest Bay of Bengal to south Maharashtra coast across Odisha, south Chhattisgarh, Telangana, north interior Karnataka in lower & middle tropospheric levels.
- ❖ An upper air cyclonic circulation lies over central parts of Madhya Maharashtra & neighbourhood at 3.1 km above mean sea level.
- ❖ A fresh low-pressure area is likely to form over northwest and adjoining central Bay of Bengal around 25th September. Moving nearly westwards, it is very likely to become a depression over northwest & adjoining westcentral Bay of Bengal off South Odisha- North Andhra Pradesh coasts on 26th September. It is very likely to cross South Odisha-North Andhra Pradesh coasts around 27th September.

Under the influence of these systems, the following weather is likely:

East & Central India:

- ❖ Light to moderate rain/thunderstorm at most/many places with isolated **heavy rainfall** likely over Odisha, Chhattisgarh during 23rd-28th; Bihar on 23rd & 24th; Jharkhand, Gangetic West Bengal during 23rd-25th; West Madhya Pradesh on 23rd; East Madhya Pradesh on 24th; Vidarbha during 24th-27th September with **very heavy rainfall** over Odisha during 23rd-26th; Gangetic West Bengal, Jharkhand on 23rd and Chhattisgarh on 24th & 25th September.
- ❖ Thunderstorm & gusty winds (speed reaching 30-40 kmph) very likely over East India during next 5 days.

West India:

- ❖ Light to moderate rain/thunderstorm at many/some places with **isolated heavy rainfall** likely over Madhya Maharashtra, Marathawada during next 7 days except on 24th; Konkan & Goa during 25th-29th and Gujarat Region on 23rd and during 27th-29th September with **very heavy rainfall** over Konkan & Goa and Madhya Maharashtra during 26th-29th and Marathawada on 27th September.

Northeast India:

- ❖ Light/moderate rain/thunderstorm at many/some places with isolated **heavy rainfall** likely over Assam & Meghalaya on 23rd, 24th & 29th and Nagaland, Manipur, Mizoram & Tripura on 23rd & 24th September.

South Peninsular India:

- ❖ Light to moderate rain/thunderstorm at many/some places with isolated **heavy rainfall** likely over Coastal Andhra Pradesh & Yanam, Telangana during 22nd-28th; Tamil Nadu during 25th-27th; Kerala & Mahe during 25th-28th; Rayalaseema, Coastal Karnataka on 26th & 27th; North Interior Karnataka during 26th-28th September with **very heavy rainfall** over Coastal Andhra Pradesh & Yanam and Telangana on 26th & 27th September.
- ❖ Strong surface winds (speed reaching 30-40 kmph) very likely over Coastal Andhra Pradesh & Yanam and Rayalaseema during next 5 days.

Fishermen warnings:

Fishermen are advised not to venture into the following areas during 23rd to 28th September:

Arabian Sea:

Some parts of southwest & adjoining westcentral Arabian Sea, along and off Somalia coast during 23rd to 28th September.

Bay of Bengal:

Gulf of Mannar & adjoining Comorin area, along and off Sri Lanka coast over entire Bay of Bengal on 23rd to 28th September, along and off Tamil Nadu, Andhra Pradesh, Odisha coasts during 25th to 28th September; and along and off West Bengal, Bangladesh, Myanmar coasts on 23rd to 28th September.

Andaman Sea during 23rd to 28th September.
Along and off Konkan and Goa, Karnataka, Kerala, Lakshadweep area during 25th to 28th September and south Gujarat on 27th September 2025.

ii. Weather conditions and forecast over Delhi/NCR during 23rd September to 26th September, 2025 (Annexure V)

For more details, kindly refer National Weather Bulletin:

https://mausam.imd.gov.in/responsive/all_india_forecast_bulletin.php

For District wise warnings refer: <https://mausam.imd.gov.in/responsive/districtWiseWarningGIS.php>

For Fishermen warning refer <https://rsmcnewdelhi.imd.gov.in/fishermen-warning.php>

Rainfall recorded (in cm) during past 24 hours till 0830 hours IST of today, the 23rd September (≥ 7 cm):

- ❖ **Gangetic West Bengal:** Alipore (dist Kolkata) 25; Mo Saltlake (dist North 24 Parganas) 23; Amta (dist Howrah) 12; Basirhat(pt) (dist North 24 Parganas) 11; Digha (dist East Midnapore) 10; Uluberia (dist Howrah) 8; Jhargram PTO (dist Jhargram), Barrackpur(Iaf) (dist North 24 Parganas) 7 Each;
- ❖ **Gujarat Region:** Dangs (ahwa) (dist Dangs) 17; Subir (dist Dangs), Palsana (dist Surat) 7 Each;
- ❖ **Marathwada:** Paithan (dist Chh. Sambhajinagar) 20; Bhum (dist Dharashiv) 17; Patoda (dist Beed) 15; Dharur (dist Beed) 9; Lohara (dist Dharashiv), Georai (dist Beed) 8 Each; Washi (dist Dharashiv), Paranda (dist Dharashiv), Umarga (dist Dharashiv) 7 Each;
- ❖ **Madhya Maharashtra:** Shevgaon (dist Ahilyanagar) 16; Pachora (dist Jalgaon), Bhadgaon (dist Jalgaon) 14 Each; Pathardi (dist Ahilyanagar) 13; Ozarkheda - Fmo (dist Nashik) 12; Harsul - Fmo (dist Nashik) 10; Nandgaon (dist Nashik), Chalisgaon (dist Jalgaon), Dahigaon - Fmo (dist Jalgaon), Peth (dist Nashik) 8 Each; Dhule (dist Dhule), Madha (dist Sholapur) 7 Each;
- ❖ **Telangana:** Atmakur M (dist Y. Bhuvanagiri) 16; Alladurg (dist Medak), Devaruppal (dist Jangaon) 12 Each; Doma (dist Vikarabad), Ibrahimpatnam (dist Rangareddy), Yellareddy (dist Kamareddy), Parvathagiri (dist Warangal), Sathupalle (dist Khammam), Kodakandla (dist Jangaon) 9 Each; Palakurthi (dist Jangaon) 8; Pinapaka (dist B. Kothagudem), Hayathnagar (dist Rangareddy), Kodangal(ARG) (dist Vikarabad) 7 Each;
- ❖ **Madhya Maharashtra:** Pachora (dist Jalgaon) 14; Madha (dist Sholapur) 12; Jeur - IMD Parttime (dist Sholapur) 10; Dahigaon - Fmo (dist Jalgaon) 9; Chas ARG (dist Ahilyanagar) 8; Ahilyanagar - IMD Pt (dist Ahilyanagar) 7;
- ❖ **South Interior Karnataka:** Agumbe AWS (dist Shivamogga) 9;
- ❖ **Tamil Nadu, Puducherry & Karaikal:** Rscl-2 Nemoor (dist Villupuram) 12; Chetpet (dist Tiruvannamalai) 11; Arani (dist Tiruvannamalai) 9; Rscl-3 Valathy (dist Villupuram) 7;
- ❖ **North Interior Karnataka:** Badami (dist Bagalkote) 11; Tidagundi Agro (dist Vijayapura) 8; Bilgi (irri.) (dist Bagalkote), Kerur (dist Bagalkote), Manvi (dist Raichur) 7 Each;
- ❖ **Tripura:** Budhjongnagar ARG (dist West Tripura) 11; Sabroom (dist South Tripura) 8; Arundhutinagar (dist West Tripura), Sabroom AWS (dist South Tripura) 7 Each;
- ❖ **West Madhya Pradesh:** Khategaon (dist Dewas) 9; Ghatiya (dist Ujjain) 7;
- ❖ **Odisha:** Gop (dist Puri) 9, Chilika (dist Khurda) 7, Sankheimundi (dist Ganjam) 7,
- ❖ **Coastal Andhra Pradesh & Yanam:** Parvathipuram (dist Parvathipuram Manyam) 8;
- ❖ **Jharkhand:** Putki (dist Dhanbad) 8; Putki Dvc (dist Dhanbad) 7;
- ❖ **East Rajasthan:** Vallabhnagar (dist Udaipur), Rashmi SR (dist Chittorgarh) 7 Each.
- ❖ **Assam & Meghalaya:** Shillong AWS (dist East Khasi Hills) 7; Saurashtra & Kutch: Mahuva(b) (dist Bhavnagar) 7; Bihar: Saraigarh Bhaptiyahi (dist Supaul) 7;
- ❖ **Nagaland, Manipur, Mizoram & Tripura:** Dimapur Nsdma AWS (dist Dimapur) 7.

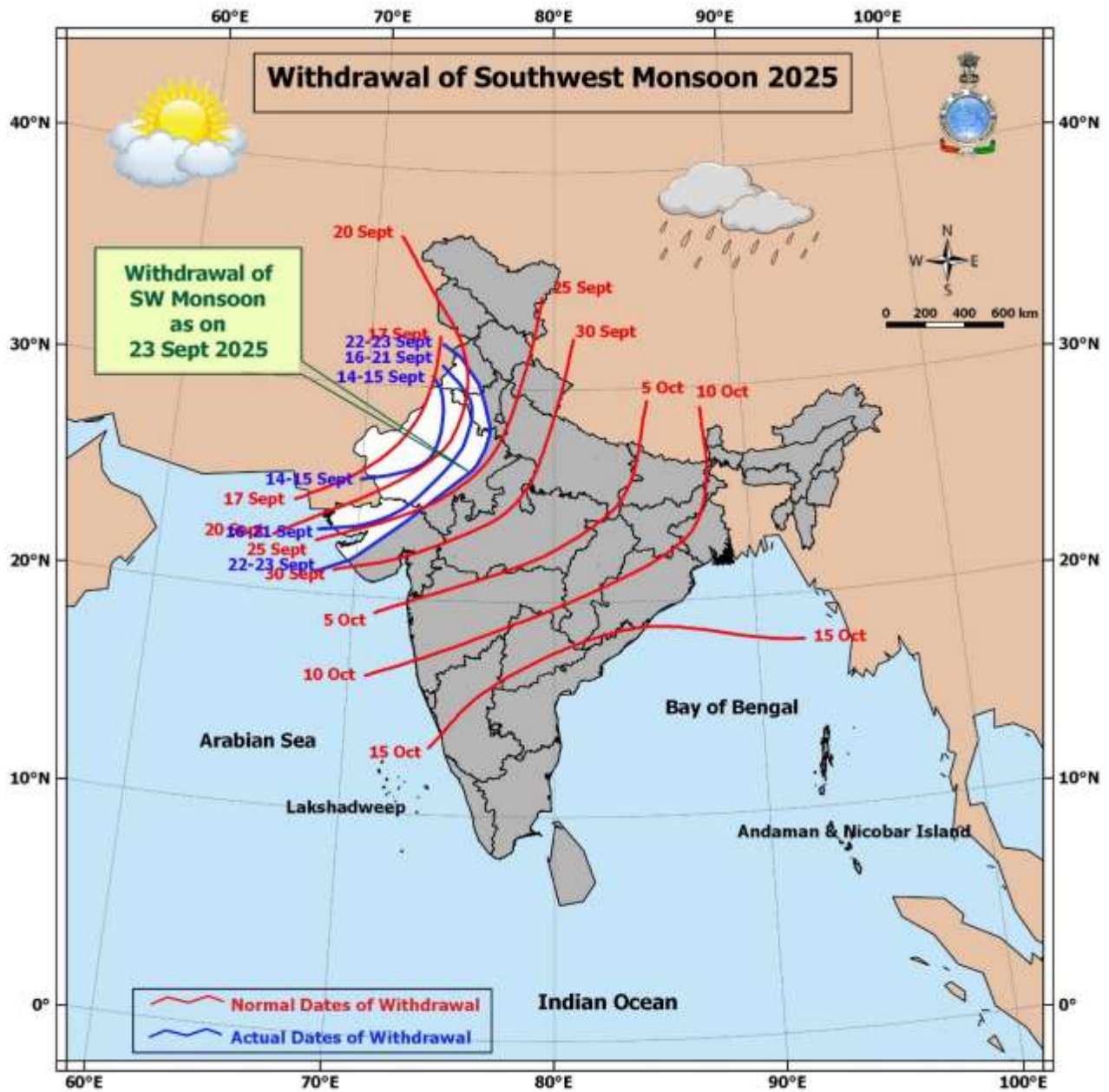
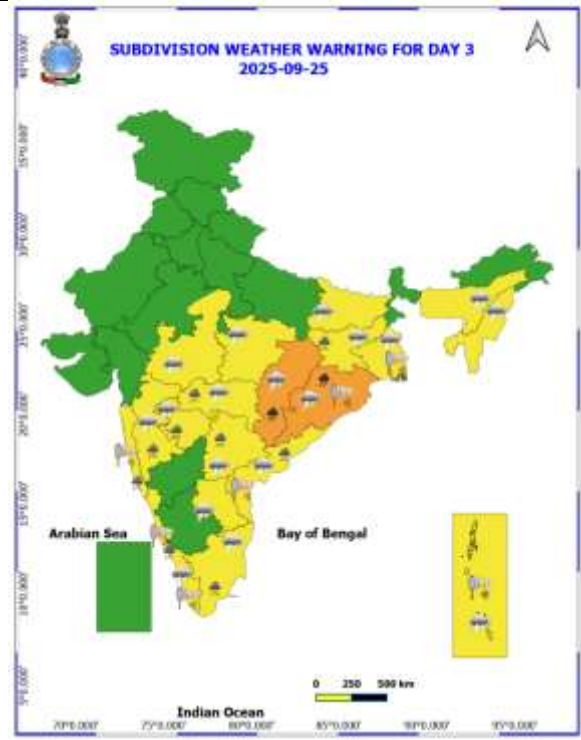
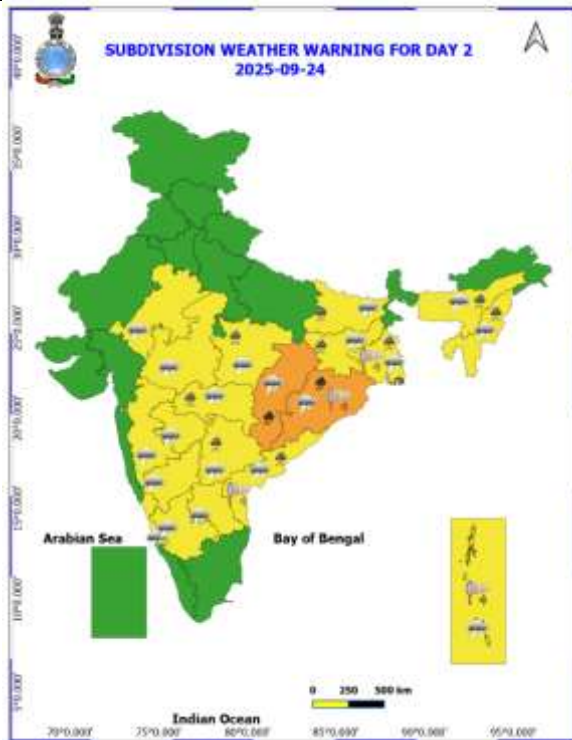
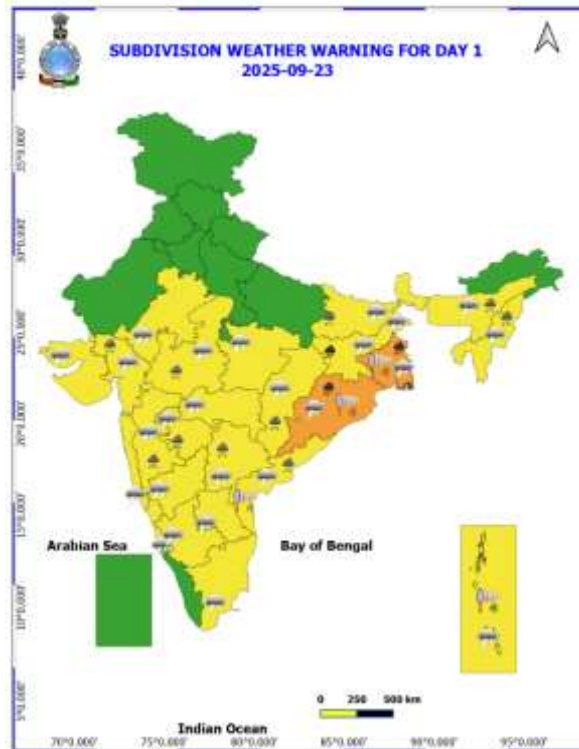
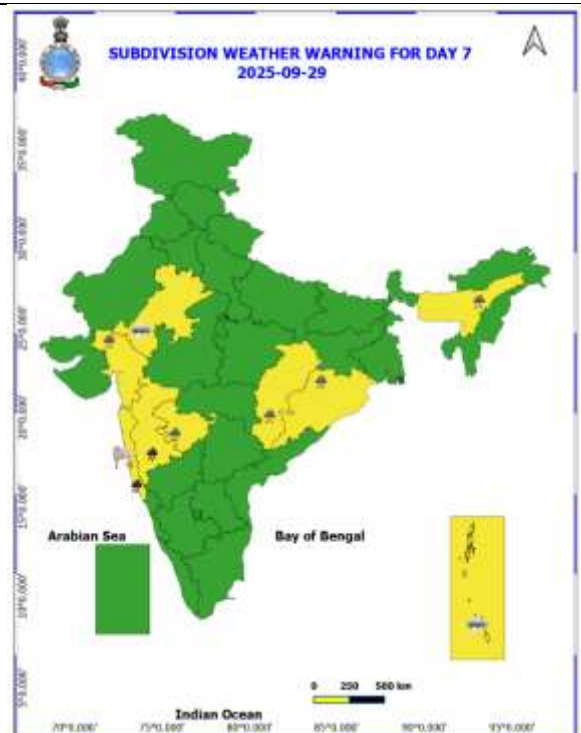
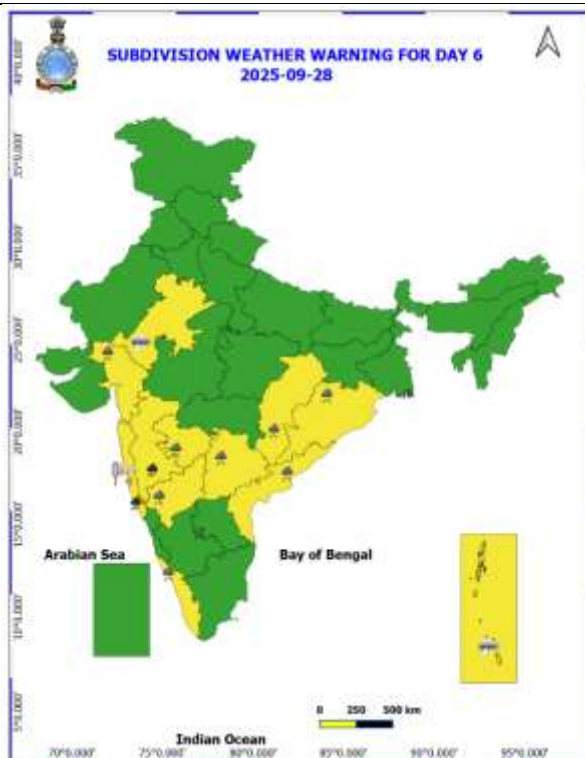
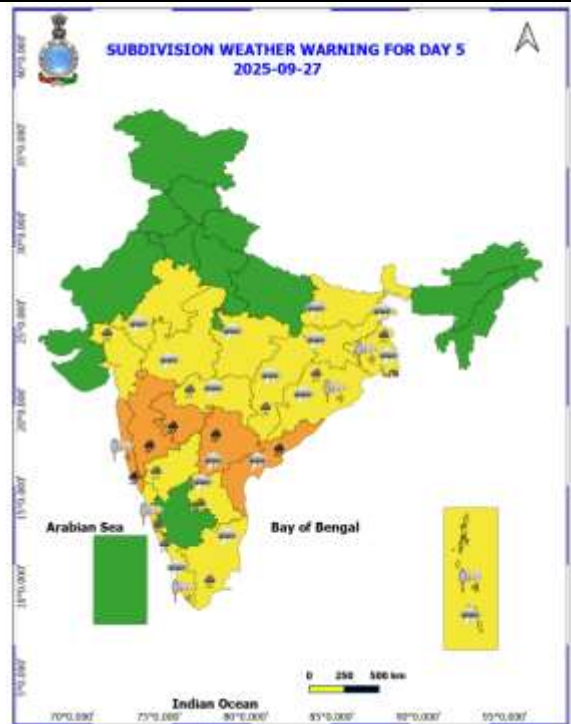
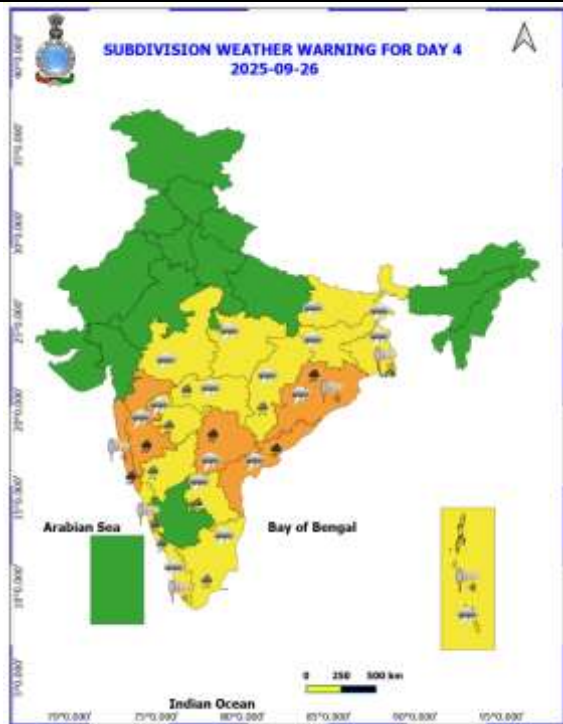


Table-1								
7 Days Rainfall Forecast								
S.No.	Subdivision	23- Sep	24- Sep	25- Sep	26- Sep	27- Sep	28- Sep	29- Sep
		Day 1	Day 2	Day 3	Day 4	Day 5	Day 6	Day 7
1	ANDAMAN & NICOBAR ISLANDS	FWS	FWS	FWS	FWS	FWS	FWS	FWS
2	ARUNACHAL PRADESH	SCT	ISOL	ISOL	ISOL	ISOL	ISOL	SCT
3	ASSAM & MEHGHALAYA	SCT	SCT	SCT	ISOL	ISOL	SCT	SCT
4	NAGALAND, MANIPUR, MIZORAM AND TRIPURA	SCT	SCT	SCT	SCT	ISOL	SCT	SCT
5	SUB HIMALAYAN WEST BENGAL & SIKKIM	SCT	SCT	SCT	SCT	FWS	FWS	FWS
6	GANGETIC WEST BENGAL	WS	WS	FWS	FWS	FWS	FWS	FWS
7	ODISHA	WS	WS	WS	WS	FWS	FWS	FWS
8	JHARKHAND	WS	WS	WS	FWS	FWS	FWS	FWS
9	BIHAR	ISOL	ISOL	ISOL	SCT	SCT	ISOL	ISOL
10	EAST UTTAR PRADESH	DRY	ISOL	ISOL	SCT	ISOL	ISOL	ISOL
11	WEST UTTAR PRADESH	DRY	DRY	DRY	ISOL	ISOL	ISOL	ISOL
12	UTTARAKHAND	ISOL	ISOL	ISOL	ISOL	ISOL	ISOL	ISOL
13	HARYANA, CHANDIGARH & DELHI	DRY	DRY	DRY	DRY	DRY	DRY	DRY
14	PUNJAB	DRY	DRY	DRY	DRY	DRY	DRY	DRY
15	HIMACHAL PRADESH	ISOL	ISOL	DRY	DRY	DRY	DRY	DRY
16	JAMMU AND KASHMIR AND LADAKH	DRY	ISOL	DRY	DRY	DRY	DRY	DRY
17	WEST RAJASTHAN	DRY	DRY	DRY	DRY	DRY	DRY	DRY
18	EAST RAJASTHAN	ISOL	ISOL	ISOL	ISOL	ISOL	ISOL	ISOL
19	WEST MADHYA PRADESH	SCT	ISOL	ISOL	SCT	SCT	FWS	FWS
20	EAST MADHYA PRADESH	ISOL	ISOL	SCT	SCT	FWS	FWS	FWS
21	GUJRAT REGION	SCT	SCT	SCT	SCT	SCT	FWS	FWS
22	SAURASHTRA & KUTCH	ISOL	ISOL	ISOL	ISOL	ISOL	SCT	SCT
23	KONKAN & GOA	FWS	WS	WS	WS	WS	WS	WS
24	MADHYA MAHARASHTRA	SCT	SCT	SCT	FWS	FWS	FWS	FWS
25	MARATHWADA	WS	SCT	FWS	FWS	WS	WS	FWS
26	VIDARBHA	FWS	FWS	WS	WS	WS	WS	FWS
27	CHHATTISGARH	SCT	FWS	FWS	WS	WS	WS	FWS
28	COASTAL ANDHRA PRADESH	FWS	FWS	WS	WS	FWS	SCT	SCT
29	TELANGANA	FWS	FWS	FWS	WS	WS	WS	FWS
30	RAYALASEEMA	SCT	FWS	FWS	FWS	SCT	ISOL	ISOL
31	TAMILNADU & PUDUCHERRY	ISOL	ISOL	ISOL	ISOL	ISOL	ISOL	ISOL
32	COSTAL KARNATAKA	WS	WS	WS	WS	WS	WS	WS
33	NORTH INTERIOR KARNATAKA	FWS	FWS	FWS	WS	WS	FWS	SCT
34	SOUTH INTERIOR KARNATAKA	FWS	FWS	FWS	FWS	FWS	SCT	SCT
35	KERALA AND MAHE	WS	WS	WS	WS	WS	WS	WS
36	LAKSHADWEEP	WS	WS	WS	WS	WS	FWS	FWS

- As the lead period increases forecast accuracy decrease.





- Action may be taken based on ORANGE AND REDCOLOUR warnings.
- Vulnerable regions likely urban and hilly areas action may be initiated for heavy rainfall warning.
- As the lead period increases forecast accuracy decreases.

Detailed districtwise Multi Hazard weather warning for next five days available at
<https://mausam.imd.gov.in/responsive/districtWiseWarningGIS.php>

Weather forecast over Delhi/NCR during 23th to 26th September 2025

Past Weather:

There has been no large change in the minimum and maximum temperatures over Delhi/NCR during the past 24 hours. The maximum and minimum temperatures over Delhi were around 34 to 35°C and 22 to 24°C respectively. The minimum and maximum temperatures were near normal. Mainly clear sky conditions with predominant surface wind from the northwest/west direction with wind speeds up to 20 kmph with gusty wind up to 35 kmph prevailed during the past 24 hours. Mainly clear sky conditions with a wind speed of less than 16 kmph from the west direction prevailed over the region in the forenoon today.

Weather Forecast:

23.09.2025: Mainly clear sky. The maximum and minimum temperatures over Delhi are likely to be in the range of 34 to 36°C. The maximum temperature will be near normal. The predominant surface wind will likely to be from the northwest direction with a wind speed of up to 20-25 kmph during afternoon hours. The wind speed will decrease becoming less than 15 kmph from the northwest direction during the evening and night.

24.09.2025: Mainly clear sky. The maximum and minimum temperatures over Delhi are likely to be in the range of 33 to 35°C and 23 to 25°C respectively. The minimum temperature will be near normal and the maximum temperature will be near normal. The predominant surface wind will likely to be from the northwest direction with a wind speed of up to 20-22 kmph during morning hours. The wind speed will gradually increase becoming less than 25 kmph from the northwest direction in the afternoon. The wind speed will decrease becoming less than 15 kmph from the northwest direction during the evening and night.

25.09.2025: Mainly clear sky. The maximum and minimum temperatures over Delhi are likely to be in the range of 32 to 34°C and 23 to 25°C respectively. The minimum temperature will be near normal and the maximum temperature will be below normal up to 1 - 2°C. The predominant surface wind will likely to be from the northwest direction with a wind speed of up to 20-22 kmph during morning hours. The wind speed will gradually increase becoming less than 25 kmph from the northwest direction in the afternoon. The wind speed will decrease becoming less than 15 kmph from the northwest direction during the evening and night.

26.09.2025: Mainly clear sky. The maximum and minimum temperatures over Delhi are likely to be in the range of 32 to 34°C and 24 to 26°C respectively. The minimum temperature will be near normal and the maximum temperature will be below normal up to 1 - 2°C. The predominant surface wind will likely to be from the northwest direction with a wind speed of up to 15 - 20 kmph during morning hours. The wind speed will gradually increase becoming less than 25 kmph from the northwest direction in the afternoon. The wind speed will decrease becoming less than 15 kmph from the northwest direction during the evening and night.

Impact & Action Suggested due to

- ❖ **Very heavy rainfall (12-20 cm)** at isolated places over Odisha during 23rd-26th; Gangetic West Bengal, Jharkhand on 23rd, Chhattisgarh on 24th & 25th; Konkan & Goa, Madhya Maharashtra during 26th-29th and Marathwada on 27th September.

Impact Expected

- Water logging/ flooding in many parts of low lying area and river banks
- Localized and short term disruption to municipal services (water, electricity, etc.)
- Major disruption of traffic flow. Major roads/local trains affected.
- Possibility of danger to very old buildings and unmaintained structures, falling of trees etc
- Closure of roads crossing low water bridges.

Action Suggested

- Traffic may be regulated effectively
- People in the affected area may restrict their movement

Agromet advisories for likely impact of Heavy Rainfall

- In **Odisha**, harvest the matured vegetables such as pumpkin, okra, brinjal etc. and store them at safe places and maintain drainage channels to remove excess water from fields of rice, green gram, maize, pigeon pea, finger millet, vegetables and fruit orchards in **North Central Plateau Zone**. Make provision for draining out excess rain water from fields of maize, finger millet and vegetables in **North Eastern Ghat Zone**; rice, sugarcane, vegetables and fruit orchards in **North Eastern Coastal Plain Zone** and rice, pigeon pea, maize, ginger and vegetables in **Eastern Ghat High Land Zone** and **South Eastern Ghat Zone**.
- In **Gangetic West Bengal**, ensure proper drainage in winter vegetable fields and betel vine gardens in **Coastal Saline Zone** and rice and vegetable fields in **Laterite and Red Soil Zone** and **New Alluvial Zone**.
- In **Jharkhand**, make proper arrangements for drainage of excess water in fields of pigeon pea, maize, finger millet and vegetables in **Western Plateau Zone**.
- In **Chhattisgarh**, ensure adequate drainage facilities in fields of rice, maize, groundnut, pigeon pea, black gram and vegetables.
- In **Maharashtra**, undertake harvesting of matured crops of groundnut and sorghum and keep the harvested produce at safer places and make provision to drain out excess rain water from fields of cotton, pigeon pea, soybean, maize, vegetables and fruit orchards in **Madhya Maharashtra**. In **Marathwada**, keep the harvested produce of black gram at safer places and provide adequate drainage facilities in fields of soybean, cotton, pigeon pea, vegetables and fruit orchards.
- In **Andhra Pradesh**, make arrangements to drain out excess water from fields of rice, maize, cotton, mesta, green gram, black gram, groundnut, sugarcane and vegetables in **North Coastal Zone** and rice, maize, pulses, finger millet, groundnut, ginger, turmeric, vegetables and fruit orchards in **High Altitude Tribal Zone**.
- In **Telangana**, make provision to drain out excess rain water from fields of rice, cotton, soybean, maize and pigeon pea in **Southern Telangana Zone**.
- In **Mizoram**, undertake harvesting of matured cobs of maize and matured upland *Jhum* rice and keep the harvested produce in safe place.
- In **Nagaland**, continue harvesting of sesame and *Jhum* rice and keep harvested produce at safer places. Maintain proper drainage in fields of rice and soybean.

Livestock / Fishery

- Keep the animals inside the shed during heavy rainfall and provide them balanced feed.
- Store feed and fodder in a safe place to prevent spoilage.
- Construct an outlet with proper netting around the ponds to drain out excess water, thereby preventing fish from escaping in case of overflow.

Agromet advisories for likely impact of Thunderstorm / Gusty Winds / Squally Winds

- Provide mechanical support to horticultural crops and staking or support to vegetables and young fruit plants / fruit-bearing plants to avoid lodging due to strong winds.

Legends & abbreviations:

- ❖ **Heavy Rain:**64.5-115.5mm; **Very Heavy Rain:**115.6-204.4mm; **Extremely Heavy Rain:** >204.4mm.
- ❖ **Obsy:** Observatory; Automatic Weather Station; **ARG:** Automatic Rain Gauge; **dist:** District; **NH:** National Highway; **KVK:** Krishi Vigyan Kendra; **DVC:** Damodar Valley Corporation; **PTO:** Part Time Office, **Aero:** Aerodrome, **IAF:** Indian Air Force.
- ❖ **Region wise classification of meteorological Sub-Divisions:**
 - **Northwest India:** Western Himalayan Region (Jammu-Kashmir-Ladakh-Gilgit-Baltistan-Muzaffarabad, Himachal Pradesh and Uttarakhand); Punjab, Haryana-Chandigarh-Delhi; West Uttar Pradesh, East Uttar Pradesh, West Rajasthan and East Rajasthan.
 - **Central India:** West Madhya Pradesh, East Madhya Pradesh, Vidarbha and Chhattisgarh.
 - **East India:** Bihar, Jharkhand, Sub-Himalayan West Bengal & Sikkim; Gangetic West Bengal, Odisha and Andaman & Nicobar Islands.
 - **Northeast India:** Arunachal Pradesh, Assam & Meghalaya and Nagaland, Manipur, Mizoram & Tripura.
 - **West India:** Gujarat Region, Saurashtra & Kutch, Konkan & Goa, Madhya Maharashtra and Marathawada.
 - **South India:** Coastal Andhra Pradesh & Yanam, Telangana, Rayalaseema, Coastal Karnataka, North Interior Karnataka, South Interior Karnataka, Kerala & Mahe, Tamil Nadu, Puducherry & Karaikal and Lakshadweep.

LEGENDS

1. अंडमान और निकोबार द्वीपसमूह

2. अरुणाचल प्रदेश

3. असम और मेघालय

4. नागालैंड, मणिपुर, मिजोरम और त्रिपुरा

5. उप-हिमालयी पश्चिम बंगाल और सिक्किम

6. गंगीय पश्चिम बंगाल

7. ओडिशा

8. झारखंड

9. बिहार

10. पूर्वी उत्तर प्रदेश

11. पश्चिम उत्तर प्रदेश

12. उत्तराखंड

13. हरियाणा, चंडीगढ़ और दिल्ली

14. पंजाब

15. हिमाचल प्रदेश

16. जम्मू और कश्मीर और लद्दाख

17. पश्चिम राजस्थान

18. पूर्वी राजस्थान

19. पश्चिम मध्य प्रदेश

20. पूर्वी मध्य प्रदेश

21. गुजरात

22. सौराष्ट्र

23. कोंकण और गोवा

24. मध्य महाराष्ट्र

25. मराठवाड़ा

26. विदर्भ

27. छत्तीसगढ़

28. तटीय आंध्र प्रदेश और यनम

29. तेलंगाना

30. रायलसीमा

31. तमिलनाडु, पुडुचेरी और कराईकल

32. तटीय कर्नाटक

33. आंतरिक उत्तरी कर्नाटक

34. आंतरिक दक्षिणी कर्नाटक

35. केरल और माहे

36. लक्षद्वीप



1. Andaman & Nicobar Islands

2. Arunachal Pradesh

3. Assam & Meghalaya

4. Nagaland, Manipur, Mizoram & Tripura

5. Sub-Himalayan West Bengal & Sikkim

6. Gangetic West Bengal

7. Odisha

8. Jharkhand

9. Bihar

10. East Uttar Pradesh

11. West Uttar Pradesh

12. Uttarakhand

13. Haryana, Chandigarh & Delhi

14. Punjab

15. Himachal Pradesh

16. Jammu & Kashmir and Ladakh

17. West Rajasthan

18. East Rajasthan

19. West Madhya Pradesh

20. East Madhya Pradesh

21. Gujarat

22. Saurashtra

23. Konkan & Goa

24. Madhya Maharashtra

25. Marathwada

26. Vidarbha

27. Chhattisgarh

28. Coastal Andhra Pradesh & Yanam

29. Telangana

30. Rayalaseema

31. Tamilnadu, Puducherry & Karaikal

32. Coastal Karnataka

33. North Interior Karnataka

34. South Interior Karnataka

35. Kerala & Mahe

36. Lakshadweep

SPATIAL DISTRIBUTION (% of Stations reporting)

% Stations	Category	% Stations	Category
76-100	Widespread (WS/Most Places)	26-50	Scattered (SCT/A Few Places)
51-75	Fairly Widespread (FWS/Many Places)	1-25	Isolated (ISOL)



Fog



Heavy Snow



Cold Wave



Heavy Rain



Dust Storm



Cold Day



Very Heavy Rain



Heat Wave



Ground Frost



Extremely Heavy Rain



Warm Night



Thunder & Lightning



Hot Day



Hailstorm



Hot & Humid



Dust Raising Winds



Strong Surface Winds

COLOUR CODED WARNING

No Warning (No Action)

Watch (Be Aware)

Alert (Be Prepared To Take Action)

Warning (Take Action)

Probabilistic Forecast

Terms	Probability of Occurrence (%)
Unlikely	< 25
Likely	25 - 50
Very Likely	50 - 75
Most Likely	> 75

* Red colour warning does not mean "Red Alert", Red colour warning means "Take Action".

Forecast and Warning for any day is valid from 0830 hours IST of day till 0830 hours IST of next day.

For more details, kindly visit <https://mausam.imd.gov.in> or contact: 011-2434-4599

(Service to the Nation since 1875)

DEFINITION/CRITERIA

Rain/ Snow *

Heavy: 64.5 to 115.5 mm/cm *
Very Heavy: 115.6 to 204.4 mm/cm *
Extremely Heavy: > 204.4 mm/cm *

Heat Wave

When maximum temperature of a station reaches $\geq 40^{\circ}\text{C}$ for plains and $\geq 30^{\circ}\text{C}$ for hilly regions
(a) Based on Departure from normal

Heat Wave: Maximum Temperature Departure from normal 4.5°C to 6.4°C .

Severe Heat Wave: Maximum Temperature Departure from normal $\geq 6.5^{\circ}\text{C}$

(b). Based on Actual maximum temperature

Heat Wave: When actual maximum temperature $\geq 45^{\circ}\text{C}$.

Severe Heat Wave: When actual maximum temperature $\geq 47^{\circ}\text{C}$.

(c). Criteria for heat wave for coastal stations

When maximum temperature departure is $> 4.5^{\circ}\text{C}$ from normal. Heat Wave may be described provided maximum temperature $\geq 37^{\circ}\text{C}$.

Warm Night

When maximum temperature remains 40°C

Warm Night: When minimum temperature departure 4.5°C to 6.4°C .

Severe Warm Night: When minimum temperature departure $> 6.4^{\circ}\text{C}$.

Cold Wave

When minimum temperature of a station $\leq 10^{\circ}\text{C}$ for plains and $\leq 0^{\circ}\text{C}$ for hilly regions.

(a). Based on departure

Cold Wave: Minimum Temperature Departure from normal -4.5°C to -6.4°C .

Severe Cold Wave: Minimum Temperature Departure from normal $\leq -6.5^{\circ}\text{C}$

(b) Based on actual Minimum Temperature (for Plains only)

Cold Wave: When Minimum Temperature is $\leq 4.0^{\circ}\text{C}$

Severe Cold Wave: When Minimum Temperature is $\leq 2.0^{\circ}\text{C}$

(c) For Coastal Stations

When Minimum Temperature departure is $\leq -4.5^{\circ}\text{C}$ & actual Minimum Temperature is $\leq 15^{\circ}\text{C}$

Cold Day

When minimum temperature of a station $\leq 10^{\circ}\text{C}$ for plains and $\leq 0^{\circ}\text{C}$ for hilly regions

Based on departure

Cold Day: Maximum Temperature Departure from normal -4.5°C to -6.4°C .

Severe Cold Day: Maximum Temperature Departure from normal $\leq -6.5^{\circ}\text{C}$

Fog

Phenomenon of small droplets suspended in air and the horizontal visibility $< 1\text{km}$

Moderate Fog: When the visibility between 500-200 metres

Dense Fog: when the visibility between 50- 200 metres

Very Dense Fog: when the visibility < 50 metres

Thunderstorm

Sudden electrical discharges manifested by a flash of light (Lightning) and a sharp rumbling sound (thunder)

Dust/Sand Storm

An ensemble of particles of dust or sand energetically lifted to great heights by a strong and turbulent wind.

Frost

Ice deposits on ground

Air temperature $\leq 4^{\circ}\text{C}$ (over Plains)

Squall

A strong wind that rises suddenly, lasts for atleast 1 minute.

Moderate: Wind speed 52-61 kmph

Severe: Wind speed 62-67 kmph

Very Severe: Wind speed > 67 kmph

Sea State

Effect of various waves in the sea over specific area

Rough to very rough: Wind speed 41-62 kmph (22-33 knots) & Wave height 2.5-6 metre

High to very high: Wind speed 63-117 kmph (34-63 knots) & Wave height 6-14 metre

Phenomenal: Wind speed > 117 kmph (> 63 knots) & Wave height > 14 metre

Cyclone

Cyclonic Storm: Wind speed 62-87 kmph (34-47 knots)

Severe Cyclonic Storm: Wind speed 88-117 kmph (48-63 knots)

Very Severe Cyclonic Storm: Wind speed 118-165 kmph (64 - 89 knots)

Extremely Severe Cyclonic Storm: Wind speed 166-220 kmph (90 -119 knots)

Super Cyclone Storm: Wind speed > 220 kmph (> 119 knots)

* Red colour warning does not mean "Red Alert", Red colour warning means "Take Action".

Forecast and Warning for any day is valid from 0830 hours IST of day till 0830 hours IST of next day.

For more details, kindly visit <https://mausam.imd.gov.in> or contact: 011-2434-4599

(Service to the Nation since 1875)

Hot and Humid: When maximum temperatures remain 3°C above normal along with the above normal relative humidity.