



**Government of India
Ministry of Earth Sciences
India Meteorological Department**



Press Release

Date: 24th September, 2025

Time of Issue: 1345 hours IST

Subject: (i) A Low pressure area lies over north Odisha and adjoining areas of northwest Bay of Bengal & Gangetic West Bengal and a fresh low-pressure area is likely to form over north & adjoining central Bay of Bengal around 25th September.

(ii) Under the influence of these systems, heavy to very heavy rainfall likely over Odisha till 27th, Chhattisgarh on 24th & 25th, Coastal Andhra Pradesh, Telangana on 26th & 27th, Vidarbha on 25th, Madhya Maharashtra, Konkan & Goa during 26th -30th; Marathwada on 27th September, 2025.

Realised weather during past 24 hours till 0830 hours IST of today, the 24th September, 2025:

- ❖ **Extremely heavy rainfall** has been recorded at isolated places over Odisha.
 - ❖ **Very heavy rainfall (12-20 cm)** has been recorded at isolated places over Chhattisgarh, Jharkhand, Tripura,
 - ❖ **Heavy rainfall (7-11 cm)** has been recorded at isolated places over Andaman Islands, Coastal Andhra Pradesh, Telangana, Gangetic West Bengal, Madhya Maharashtra, Assam, Arunachal Pradesh & Coastal Karnataka.
- For more details of realised weather, kindly refer [Annexure I](#).**

Withdrawal of southwest Monsoon:

- ❖ The **southwest monsoon** has further withdrawn from remaining parts of Punjab, Haryana, Chandigarh & Delhi; some more parts of Gujarat & Rajasthan; and some parts of Madhya Pradesh, Uttar Pradesh, Uttarakhand, Himachal Pradesh and Jammu & Kashmir on today 24th September 2025.
- ❖ The **line of withdrawal of southwest monsoon** now passes through 37.5°N/ 73°E, Rampur Bushahr, Haridwar, Muradabad, Etawah, Banswara, Valabh, Vidyanagar, Veraval, 20.5°N/69°E.
- ❖ Conditions are favourable for further withdrawal of southwest monsoon from remaining parts of Gujarat, Rajasthan, Himachal Pradesh and Jammu & Kashmir; some more parts of Madhya Pradesh, Uttar Pradesh and Uttarakhand during next 2-3 days. ([Annexure II](#))

i. Weather Systems, Forecast and Warnings (refer to Annexure III & IV):

- ❖ Yesterday's **low-pressure area** over coastal areas of West Bengal and adjoining north Odisha & northwest Bay of Bengal, now lies over north Odisha and adjoining areas of northwest Bay of Bengal & Gangetic West Bengal at 0830 hours IST of today, the 24th September, 2025. It is likely to persist over the same region and become less marked during next 12 hours.
 - ❖ An **upper air cyclonic circulation** formed over coastal areas of central Myanmar and adjoining eastcentral Bay of Bengal upto middle tropospheric levels at 0830 hours IST of today, the 24th September. It is likely to move westwards gradually and under its influence, a **low-pressure area** is likely to form over north & adjoining central Bay of Bengal on 25th September. Moving nearly westwards, it is very likely to concentrate into a **depression** over northwest and adjoining westcentral Bay of Bengal off South Odisha- North Andhra Pradesh coasts on 26th September. It is very likely to cross South Odisha-North Andhra Pradesh coasts around 27th September.
 - ❖ An **upper air cyclonic circulation** lies over central parts of Madhya Maharashtra & neighbourhood at lower tropospheric levels.
 - ❖ An **upper air cyclonic circulation** lies over northeast Assam & neighbourhood at lower tropospheric level.
- Under the influence of these systems, the following weather is likely:**

East & Central India:

- ❖ Light to moderate rain/thunderstorm at most/many places with isolated **heavy rainfall** likely over Chhattisgarh during next 7 days; East Madhya Pradesh on 24th, 29th & 30th; West Madhya Pradesh during 28th -30th; Vidarbha during 24th -27th; Andaman & Nicobar Islands on 24th, 25th & 30th; Gangetic West Bengal on 27th; Bihar on 28th; Jharkhand on 24th; Odisha during 24th-27th September with **very heavy rainfall** over Vidarbha on 25th; Chhattisgarh on 24th & 25th; Odisha on 24th, 26th & 27th September.
- ❖ Thunderstorm & gusty winds (speed reaching 40-50 kmph) very likely over Andaman & Nicobar Islands during next 7 days; Vidarbha on 25th & 26th, Chhattisgarh during 24th -26th, Gangetic West Bengal on 27th & 28th September.
- ❖ Thunderstorm & gusty winds (speed reaching 30-40 kmph) very likely over Sub-Himalayan West Bengal & Sikkim during 24th -27th; Gangetic West Bengal 24th -26th, Bihar on 24th & during 26th -30; Odisha during 24th -27th September.

West India:

- ❖ Light to moderate rain/thunderstorm at many/some places with **isolated heavy rainfall** likely over Madhya Maharashtra, Konkan & Goa during 25th -30th; Marathwada during 25th -29th; Gujarat Region during 27th -30th; Saurashtra & Kutch on 30th September with **very heavy rainfall** over Madhya Maharashtra, Konkan & Goa during 26th -30th; Marathwada on 27th September.

Northeast India:

- ❖ Light/moderate rain/thunderstorm at some/few places with isolated **heavy rainfall** likely over Assam & Meghalaya on 24th, 29th & 30th and Nagaland, Manipur, Mizoram & Tripura on 24th, 25th & 30th September.

South Peninsular India:

- ❖ Light to moderate rain/thunderstorm at many/some places with isolated **heavy rainfall** likely over Telangana during next 7 days; Tamil Nadu during 25th -27th; Kerala & Mahe during 24th -27th; Lakshadweep on 25th & 26th; Coastal Karnataka on 24th & 25th and during 27th -30th; North Interior Karnataka during 26th -29th; South Interior Karnataka during 26th-28th; Coastal Andhra Pradesh & Yanam during 24th -29th; Rayalaseema on 26th & 27th September with **very heavy rainfall** over Coastal Andhra Pradesh & Yanam and Telangana on 26th & 27th September.
- ❖ Strong surface winds (speed reaching 40-50 kmph) very likely over Coastal Andhra Pradesh & Yanam during next 5 days.
- ❖ Strong surface winds (speed reaching 30-40 kmph) very likely over Rayalaseema during next 5 days; Interior Karnataka during 26th -28th September.

Fishermen warnings:

Fishermen are advised not to venture into the following areas during 24th to 29th September:

Arabian Sea:

- Some parts of southwest & adjoining westcentral Arabian Sea, along and off Somalia coast during 24th to 29th September.
- Along and off Konkan and Goa during 26th to 29th September, Karnataka, Kerala, Lakshadweep area during 25th to 28th September and south Gujarat during 27th to 29th September 2025.

Bay of Bengal:

- Along and off West Bengal, Bangladesh, Myanmar coasts, Gulf of Mannar & adjoining Comorin area, along and off Sri Lanka coast, over entire Bay of Bengal during 24th to 29th September, along and off Tamil Nadu, Andhra Pradesh, Odisha coasts during 25th to 29th September.
- Andaman Sea during 24th to 29th September.

ii. Weather conditions and forecast over Delhi/NCR during 24th September to 27th September, 2025 (Annexure V)

For more details, kindly refer National Weather Bulletin:

https://mausam.imd.gov.in/responsive/all_india_forecast_bulletin.php

For District wise warnings refer: <https://mausam.imd.gov.in/responsive/districtWiseWarningGIS.php>

For Fishermen warning refer <https://rsmcnewdelhi.imd.gov.in/fishermen-warning.php>

Rainfall recorded (in cm) during past 24 hours till 0830 hours IST of today, the 24th September (≥ 7 cm):

- ❖ **Odisha:** Burla (dist Sambalpur) 23, Hatadihi (dist Keonjhar) 18, Ambabhona (dist Bargarh) 18, Dhankauda (dist Sambalpur) 18, Sambalpur (dist Sambalpur) 18, Hirakud (dist Sambalpur) 16, Umarkote (dist Nawarangpur) 13, Tiring (dist Mayurbhanj) 13, Atabira (dist Bargarh) 12, Bargarh (dist Bargarh) 11, Sohela (dist Bargarh) 10, Patnagarh (dist Bolangir) 10, Khaprakhol (dist Bolangir) 9, Nawapara (dist Nawapara) 9, Batli (dist Bargarh) 9, Bijepur (dist Bargarh) 9, Th Rampur (dist Kalahandi) 9, Belgaon (dist Bolangir) 8, Paikmal (dist Bargarh) 8, Karanjia (dist Mayurbhanj) 8, Jujumura (dist Sambalpur) 8, Hemgiri (dist Sundargarh) 8, Nawana (dist Mayurbhanj) 7, Malkangiri (dist Malkangiri) 7, Deogaon (dist Jharsuguda) 7, Banspal (dist Keonjhar) 7, Bhograi (dist Balasore) 7, Sukinda (dist Jajpur) 7, Rairakhol (dist Sambalpur) 7, Barpalli (dist Bargarh) 7, Betanati (dist Mayurbhanj) 7, Chendipada (dist Angul) 7, Kolabira (dist Jharsuguda) 7,
- ❖ **Chhattisgarh:** Sonakhan (dist Baloda Bazar) 18, Gidhori Tundra (dist Baloda Bazar) 16, Sarsiva dist Sarangarh Bilaigarh) 15, Seovrinarayan (dist Janjgir) 13, Sarangarh (dist Sarangarh Bilaigarh) 12, Basana (dist Mahasamund) 12, Bilaigarh (dist Sarangarh Bilaigarh) 12, Malkharoda (dist Sakti) 10, Baramkela (dist Sarangarh Bilaigarh) 10, Pithora (dist Mahasamund) 9, Pusaur (dist Raigarh) 9, Saraipali (dist Mahasamund) 9, Bhatgaon (dist Sarangarh Bilaigarh) 9, Navagarh (dist Janjgir) 8, Chandrapur (dist Sakti) 8, Hasaud (dist Sakti) 8, Raigarh (dist Raigarh) 7, Rajim (dist Gariaband) 7, Kashdol (dist Baloda Bazar) 7, Sariya (dist Sarangarh Bilaigarh) 7, Dhabhara (dist Sakti) 7, Komakhan (dist Mahasamund) 7, Bagbahara (dist Mahasamund) 7,
- ❖ **Jharkhand:** Mandar (dist Ranchi) 14,
- ❖ **Nagaland, Manipur, Mizoram & Tripura:** Kanchanpur (dist North Tripura) 12,
- ❖ **Madhya Maharashtra:** Surgana (dist Nashik) 10, Peth (dist Nashik) 7,
- ❖ **Assam & Meghalaya:** Margherita (dist Tinsukia) 9, Udaipur (dist Tinsukia) 8,
- ❖ **Coastal Andhra Pradesh & Yanam:** Ranastalam (dist Srikakulam) 9, Merakamudidam (dist Vizianagaram) 7, Chodavaram (dist Anakapalli) 7,
- ❖ **Telangana:** Balkonda (dist Nizamabad) 9, Bheemgal (dist Nizamabad) 7,
- ❖ **Andaman & Nicobar Islands:** Long Island (dist North & Middle Andaman) 9, Maya Bandar (dist North & Middle Andaman) 7,
- ❖ **Gangetic West Bengal:** Amfu Kharagpur (dist West Midnapore) 8,
- ❖ **Arunachal Pradesh:** Longding(AWS) 7.
- ❖ **Coastal Karnataka:** Kalbhag_Kumtatalug (dist. Uttar Kanada) 7.

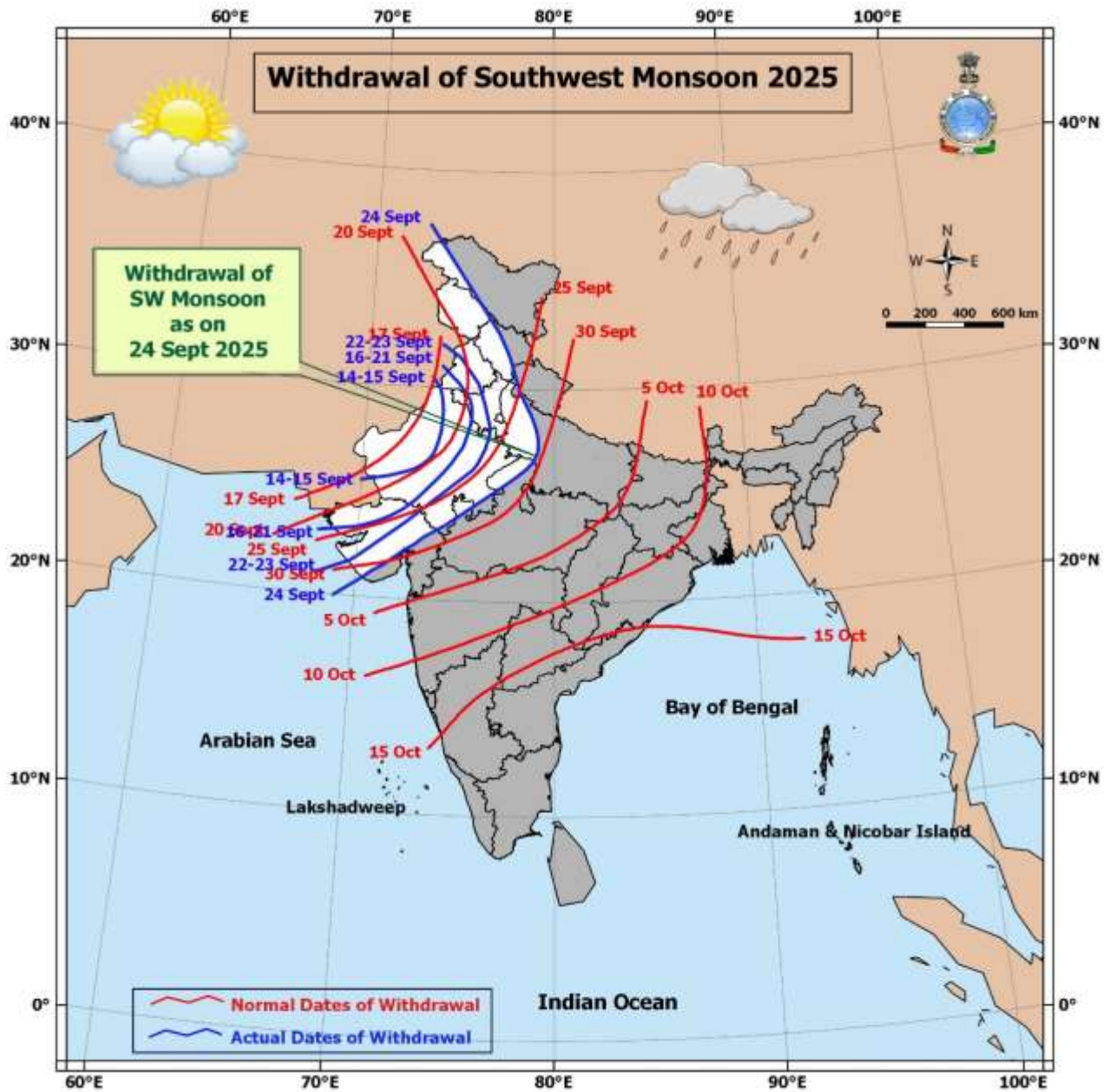
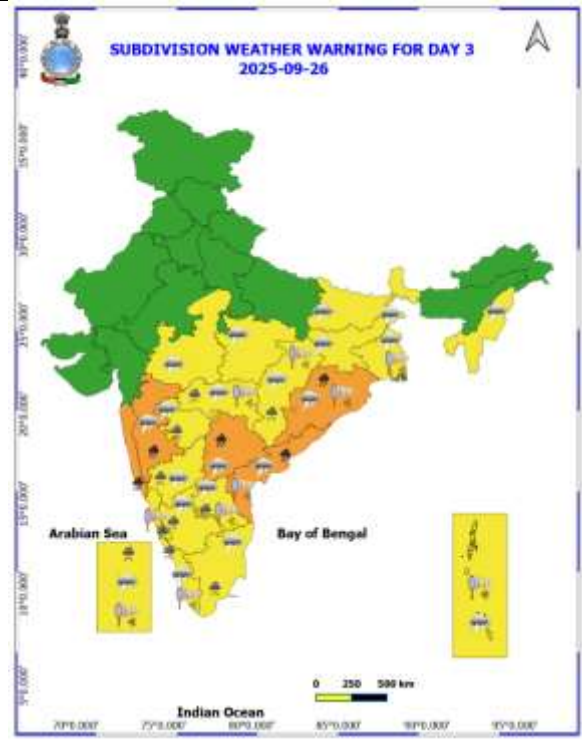
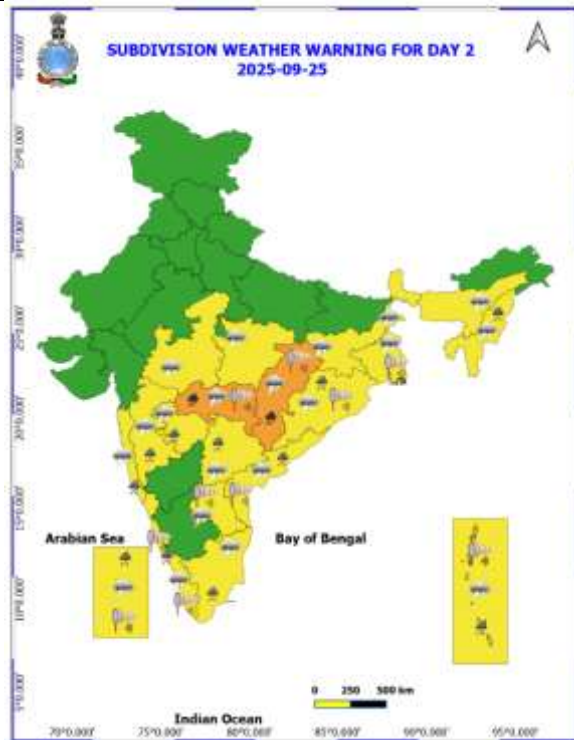
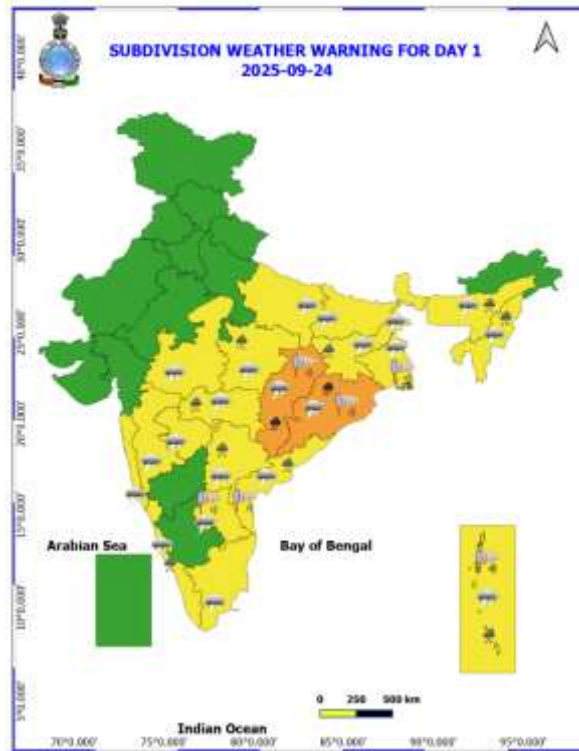
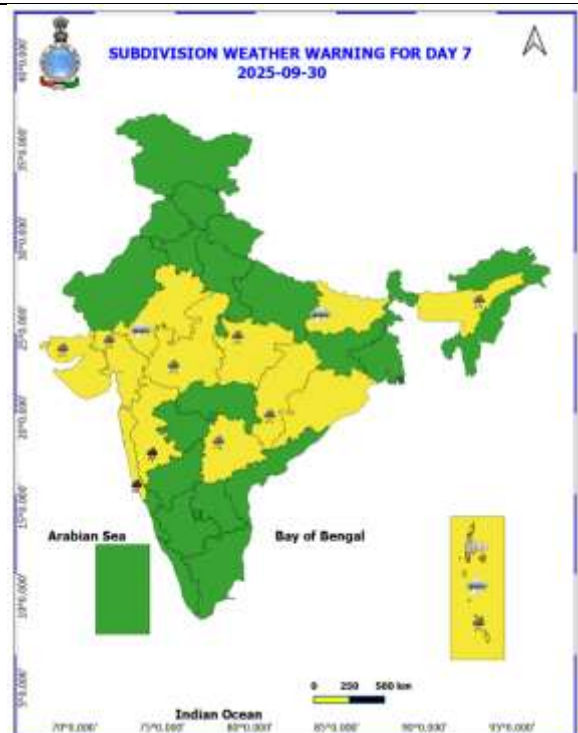
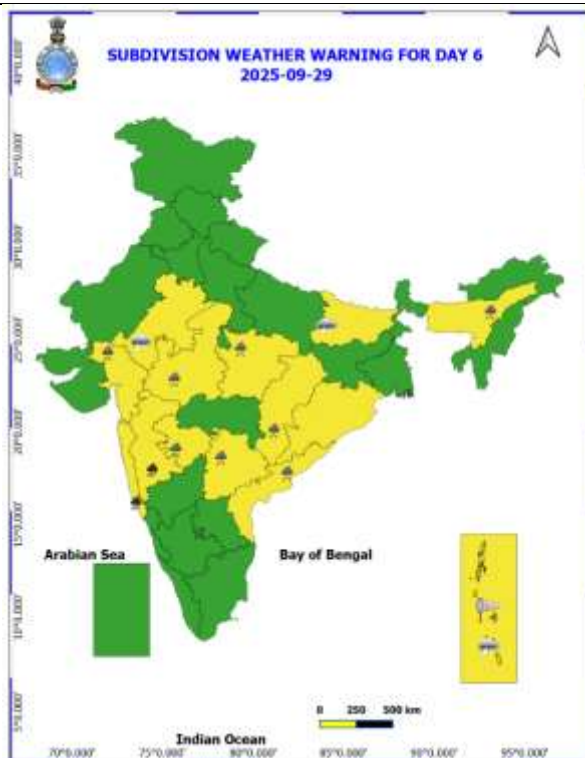
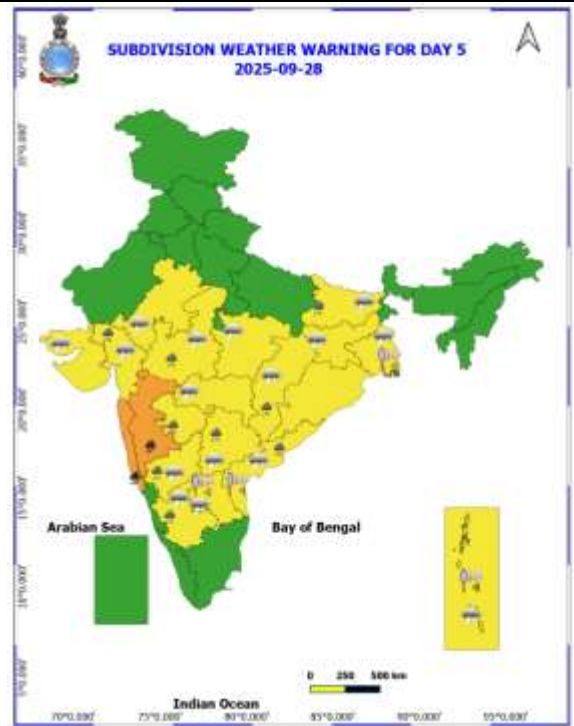
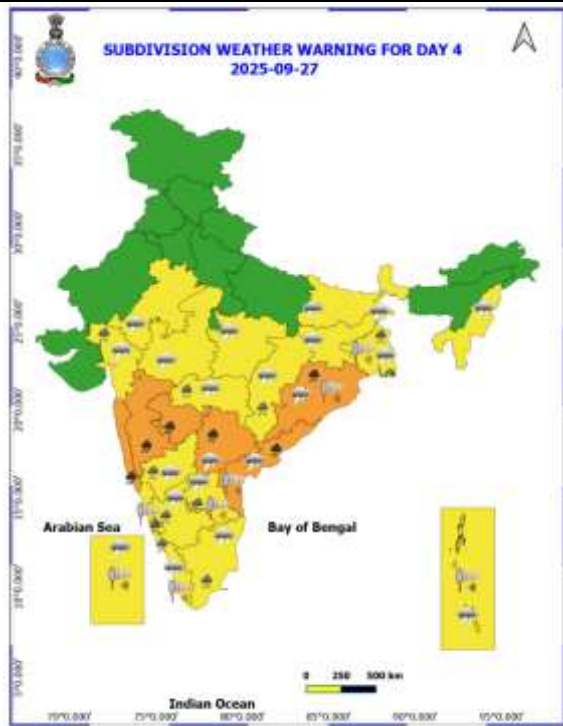


Table-1								
7 Days Rainfall Forecast								
S.No.	Subdivision	24- Sep	25- Sep	26- Sep	27- Sep	28- Sep	29- Sep	30- Sep
		Day 1	Day 2	Day 3	Day 4	Day 5	Day 6	Day 7
1	ANDAMAN & NICOBAR ISLANDS	FWS	WS	FWS	FWS	FWS	WS	WS
2	ARUNACHAL PRADESH	ISOL	ISOL	ISOL	ISOL	ISOL	SCT	SCT
3	ASSAM & MEHGHALAYA	SCT	SCT	ISOL	SCT	FWS	SCT	SCT
4	NAGALAND, MANIPUR, MIZORAM AND TRIPURA	FWS	SCT	SCT	SCT	SCT	SCT	SCT
5	SUB HIMALAYAN WEST BENGAL & SIKKIM	ISOL	ISOL	SCT	FWS	FWS	FWS	FWS
6	GANGETIC WEST BENGAL	FWS	FWS	FWS	WS	FWS	FWS	FWS
7	ODISHA	FWS	WS	WS	FWS	FWS	FWS	FWS
8	JHARKHAND	WS	FWS	FWS	FWS	FWS	FWS	FWS
9	BIHAR	ISOL	ISOL	ISOL	ISOL	SCT	SCT	FWS
10	EAST UTTAR PRADESH	ISOL	ISOL	SCT	ISOL	ISOL	ISOL	SCT
11	WEST UTTAR PRADESH	DRY	DRY	SCT	ISOL	ISOL	ISOL	ISOL
12	UTTARAKHAND	ISOL	ISOL	ISOL	ISOL	ISOL	ISOL	ISOL
13	HARYANA, CHANDIGARH & DELHI	DRY	DRY	DRY	DRY	DRY	DRY	DRY
14	PUNJAB	DRY	DRY	DRY	DRY	DRY	DRY	DRY
15	HIMACHAL PRADESH	DRY	DRY	DRY	DRY	DRY	DRY	DRY
16	JAMMU AND KASHMIR AND LADAKH	ISOL	ISOL	DRY	DRY	DRY	DRY	DRY
17	WEST RAJASTHAN	DRY	DRY	DRY	DRY	DRY	DRY	DRY
18	EAST RAJASTHAN	DRY	DRY	DRY	ISOL	ISOL	ISOL	ISOL
19	WEST MADHYA PRADESH	ISOL	ISOL	SCT	SCT	FWS	FWS	FWS
20	EAST MADHYA PRADESH	SCT	SCT	SCT	FWS	FWS	FWS	FWS
21	GUJRAT REGION	SCT	SCT	SCT	SCT	FWS	FWS	FWS
22	SAURASHTRA & KUTCH	ISOL	ISOL	ISOL	ISOL	SCT	SCT	SCT
23	KONKAN & GOA	FWS	WS	WS	WS	WS	WS	WS
24	MADHYA MAHARASHTRA	SCT	FWS	WS	WS	WS	WS	WS
25	MARATHWADA	FWS	FWS	WS	WS	WS	FWS	FWS
26	VIDARBHA	FWS	WS	WS	WS	WS	FWS	FWS
27	CHHATTISGARH	WS	WS	WS	WS	FWS	FWS	FWS
28	COASTAL ANDHRA PRADESH	FWS	FWS	WS	WS	FWS	SCT	SCT
29	TELANGANA	FWS	FWS	WS	WS	FWS	FWS	FWS
30	RAYALASEEMA	SCT	SCT	FWS	FWS	SCT	ISOL	ISOL
31	TAMILNADU & PUDUCHERRY	ISOL	ISOL	ISOL	ISOL	ISOL	ISOL	ISOL
32	COSTAL KARNATAKA	WS	WS	WS	WS	WS	WS	WS
33	NORTH INTERIOR KARNATAKA	FWS	FWS	FWS	WS	FWS	FWS	SCT
34	SOUTH INTERIOR KARNATAKA	FWS	FWS	FWS	FWS	SCT	SCT	SCT
35	KERALA AND MAHE	WS	WS	WS	WS	WS	WS	WS
36	LAKSHADWEEP	WS	WS	WS	WS	WS	FWS	FWS

- As the lead period increases forecast accuracy decrease.





- Action may be taken based on ORANGE AND REDCOLOUR warnings.
- Vulnerable regions likely urban and hilly areas action may be initiated for heavy rainfall warning.
- As the lead period increases forecast accuracy decreases.

Detailed districtwise Multi Hazard weather warning for next five days available at
<https://mausam.imd.gov.in/responsive/districtWiseWarningGIS.php>

Weather forecast over Delhi/NCR during 24th to 27th September 2025

Past Weather:

There has been no large change in the minimum and maximum temperatures over Delhi/NCR during the past 24 hours. The maximum and minimum temperatures over Delhi were around 34 to 36°C and 22 to 24°C respectively. The minimum and maximum temperatures were near normal. Mainly clear sky conditions with predominant surface wind from the northwest/west direction with wind speeds up to 20 kmph with gusty wind up to 36 kmph prevailed during the past 24 hours. Mainly clear sky conditions with a wind speed of less than 16 kmph from the west direction prevailed over the region in the forenoon today.

Weather Forecast:

24.09.2025: Mainly clear sky. The maximum and minimum temperatures over Delhi are likely to be in the range of 34 to 36°C. The maximum temperature will be near normal. The predominant surface wind will likely to be from the northwest direction with a wind speed of up to 15-20 kmph during afternoon hours. The wind speed will decrease becoming less than 15 kmph from the northwest direction during the evening and night.

25.09.2025: Mainly clear sky. The maximum and minimum temperatures over Delhi are likely to be in the range of 33 to 35°C and 23 to 25°C respectively. The minimum temperature will be near normal and the maximum temperature will be near normal. The predominant surface wind will likely to be from the northwest direction with a wind speed of up to 10-15 kmph during morning hours. The wind speed will gradually increase becoming less than 20 kmph from the northwest direction in the afternoon. The wind speed will decrease becoming less than 15 kmph from the west direction during the evening and night.

26.09.2025: Mainly clear sky. The maximum and minimum temperatures over Delhi are likely to be in the range of 33 to 35°C and 23 to 25°C respectively. The minimum temperature will be near normal and the maximum temperature will be near normal. The predominant surface wind will likely to be from the northwest direction with a wind speed of up to 10-15 kmph during morning hours. The wind speed will gradually increase becoming less than 20 kmph from the west direction in the afternoon. The wind speed will decrease becoming less than 10 kmph from the northeast direction during the evening and night.

27.09.2025: Partly cloudy sky. The maximum and minimum temperatures over Delhi are likely to be in the range of 34 to 36°C and 23 to 25°C respectively. The minimum temperature will be near normal and the maximum temperature will be near normal. The predominant surface wind will likely to be from the east direction with a wind speed of up to 08 - 12 kmph during morning hours. The wind speed will gradually increase becoming less than 15 kmph from the northeast direction in the afternoon. The wind speed will decrease becoming less than 10 kmph from the northeast direction during the evening and night.

Impact & Action Suggested due to

- ❖ **Very heavy rainfall (12-20 cm)** at isolated places over Vidarbha on 25th; Chhattisgarh on 24th & 25th; Odisha on 24th, 26th & 27th; Madhya Maharashtra, Konkan & Goa during 26th -30th; Marathawada on 27th; Coastal Andhra Pradesh & Yanam and Telangana on 26th & 27th September.

Impact Expected

- Water logging/ flooding in many parts of low lying area and river banks
- Localized and short term disruption to municipal services (water, electricity, etc.)
- Major disruption of traffic flow. Major roads/local trains affected.
- Possibility of danger to very old buildings and unmaintained structures, falling of trees etc
- Closure of roads crossing low water bridges.

Action Suggested

- Traffic may be regulated effectively
- People in the affected area may restrict their movement

Agromet advisories for likely impact of Heavy Rainfall

- In **Odisha**, make provision for draining out excess rain water from fields of rice, maize, vegetables and fruit orchards in **West Central Table land Zone**; rice, maize, green gram, groundnut, finger millet, vegetables and fruit orchards (banana, papaya etc.) in **North Central Plateau Zone**; rice, maize, finger millet and vegetables in **North Eastern Plateau Zone**; rice, sugarcane, vegetables and fruit orchards (guava, papaya etc.) in **North Eastern Coastal Plain Zone**; rice, groundnut and vegetables in **North Eastern Ghat Zone** and rice, maize, finger millet, vegetables, ginger and turmeric in **Eastern Ghat High Land Zone** and **South Eastern Ghat Zone**.
- In **Jharkhand**, make proper arrangements for drainage of excess water in fields of maize, finger millet, pulses and vegetables in **Western Plateau Zone**.
- In **Chhattisgarh**, ensure adequate drainage facilities in vegetable fields and banana and papaya plantations in **Bastar Plateau Zone** and rice, maize, pigeon pea, black gram and groundnut fields in **Chattisgarh Plain Zone**.
- In **Maharashtra**, keep the harvested produce of green gram and black gram at safer places and make provision to drain out excess rain water from fields of cotton, pigeon pea, soybean, maize, vegetables and fruit in **Madhya Maharashtra**. In **Marathwada**, undertake harvesting of sapota and custard apple and store in safe place. Provide adequate drainage facilities in fields of soybean, cotton, pigeon pea, vegetables and fruit orchards and keep the harvested produce of black gram at safer places. Make arrangements to drain out excess water from vegetable fields and fruit orchards in **Konkan** and pigeon pea, cotton, soybean, sorghum, maize and vegetable fields in **Vidarbha**.
- In **Andhra Pradesh**, make arrangements to drain out excess water from fields of rice, maize, pigeon pea and cotton in **Krishna Godavari Zone**; rice, maize, cotton, pigeon pea, green gram, groundnut, sugarcane and vegetables in **North Coastal Zone** and rice, sugarcane, maize, finger millet, groundnut, ginger, turmeric, vegetables and fruit orchards in **High Altitude Tribal Zone**.
- In **Telangana**, make provision to drain out excess rain water from fields of rice, maize, cotton, soybean, pigeon pea and turmeric in **Northern Telangana Zone** and rice, cotton, soybean, maize and pigeon pea in **Southern Telangana Zone**.
- In **Mizoram**, undertake harvesting of matured vegetables (okra, tomato etc.) and matured cobs of maize and keep the harvested produce in safe place.
- In **Nagaland**, continue harvesting of sesame, *Jhum* rice and Naga King chilli and keep harvested produce at safer places.

Livestock / Fishery

- Keep the animals inside the shed during heavy rainfall and provide them balanced feed.
- Store feed and fodder in a safe place to prevent spoilage.
- Construct an outlet with proper netting around the ponds to drain out excess water, thereby preventing fish from escaping in case of overflow.

Agromet advisories for likely impact of Thunderstorm / Gusty Winds / Squally Winds

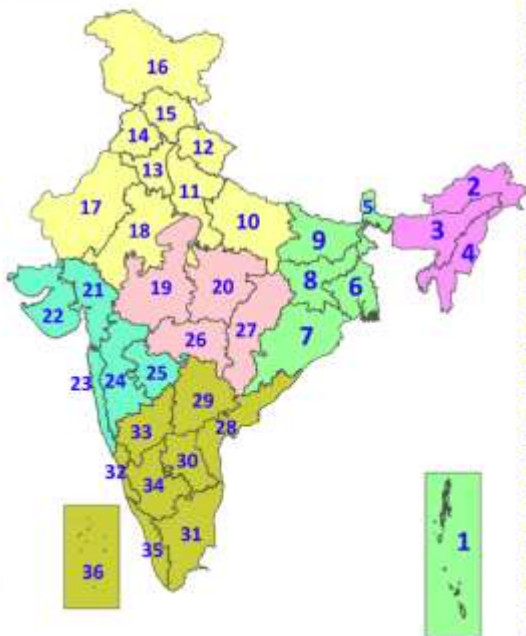
- Provide mechanical support to horticultural crops and staking or support to vegetables and young fruit plants / fruit-bearing plants to avoid lodging due to strong winds.

Legends & abbreviations:

- ❖ **Heavy Rain:** 64.5-115.5mm; **Very Heavy Rain:** 115.6-204.4mm; **Extremely Heavy Rain:** >204.4mm.
- ❖ **Obsy:** Observatory; Automatic Weather Station; **ARG:** Automatic Rain Gauge; **dist:** District; **NH:** National Highway; **KVK:** Krishi Vigyan Kendra; **DVC:** Damodar Valley Corporation; **PTO:** Part Time Office, **Aero:** Aerodrome, **IAF:** Indian Air Force.
- ❖ **Region wise classification of meteorological Sub-Divisions:**
 - **Northwest India:** Western Himalayan Region (Jammu-Kashmir-Ladakh-Gilgit-Baltistan-Muzaffarabad, Himachal Pradesh and Uttarakhand); Punjab, Haryana-Chandigarh-Delhi; West Uttar Pradesh, East Uttar Pradesh, West Rajasthan and East Rajasthan.
 - **Central India:** West Madhya Pradesh, East Madhya Pradesh, Vidarbha and Chhattisgarh.
 - **East India:** Bihar, Jharkhand, Sub-Himalayan West Bengal & Sikkim; Gangetic West Bengal, Odisha and Andaman & Nicobar Islands.
 - **Northeast India:** Arunachal Pradesh, Assam & Meghalaya and Nagaland, Manipur, Mizoram & Tripura.
 - **West India:** Gujarat Region, Saurashtra & Kutch, Konkan & Goa, Madhya Maharashtra and Marathawada.
 - **South India:** Coastal Andhra Pradesh & Yanam, Telangana, Rayalaseema, Coastal Karnataka, North Interior Karnataka, South Interior Karnataka, Kerala & Mahe, Tamil Nadu, Puducherry & Karaikal and Lakshadweep.

LEGENDS

1. अंडमान और निकोबार द्वीपसमूह
2. अरुणाचल प्रदेश
3. असम और मेघालय
4. नागालैंड, मणिपुर, मिजोरम और त्रिपुरा
5. उप-हिमालयी पश्चिम बंगाल और सिक्किम
6. गंगीय पश्चिम बंगाल
7. ओडिशा
8. झारखंड
9. बिहार
10. पूर्वी उत्तर प्रदेश
11. पश्चिम उत्तर प्रदेश
12. उत्तराखंड
13. हरियाणा, चंडीगढ़ और दिल्ली
14. पंजाब
15. हिमाचल प्रदेश
16. जम्मू और कश्मीर और लद्दाख
17. पश्चिम राजस्थान
18. पूर्वी राजस्थान
19. पश्चिम मध्य प्रदेश
20. पूर्वी मध्य प्रदेश
21. गुजरात
22. सौराष्ट्र
23. कोंकण और गोवा
24. मध्य महाराष्ट्र
25. मराठवाड़ा
26. विदर्भ
27. छत्तीसगढ़
28. तटीय आंध्र प्रदेश और यनम
29. तेलंगाना
30. रायलसीमा
31. तमिलनाडु, पुडुचेरी और कराईकल
32. तटीय कर्नाटक
33. आंतरिक उत्तरी कर्नाटक
34. आंतरिक दक्षिणी कर्नाटक
35. केरल और माहे
36. लक्षद्वीप



1. Andaman & Nicobar Islands
2. Arunachal Pradesh
3. Assam & Meghalaya
4. Nagaland, Manipur, Mizoram & Tripura
5. Sub-Himalayan West Bengal & Sikkim
6. Gangetic West Bengal
7. Odisha
8. Jharkhand
9. Bihar
10. East Uttar Pradesh
11. West Uttar Pradesh
12. Uttarakhand
13. Haryana, Chandigarh & Delhi
14. Punjab
15. Himachal Pradesh
16. Jammu & Kashmir and Ladakh
17. West Rajasthan
18. East Rajasthan
19. West Madhya Pradesh
20. East Madhya Pradesh
21. Gujarat
22. Saurashtra
23. Konkan & Goa
24. Madhya Maharashtra
25. Marathwada
26. Vidarbha
27. Chhattisgarh
28. Coastal Andhra Pradesh & Yanam
29. Telangana
30. Rayalaseema
31. Tamilnadu, Puducherry & Karaikal
32. Coastal Karnataka
33. North Interior Karnataka
34. South Interior Karnataka
35. Kerala & Mahe
36. Lakshadweep

SPATIAL DISTRIBUTION (% of Stations reporting)

% Stations	Category	% Stations	Category
76-100	Widespread (WS/Most Places)	26-50	Scattered (SCT/A Few Places)
51-75	Fairly Widespread (FWS/Many Places)	1-25	Isolated (ISOL)



Heavy Rain

Very Heavy Rain

Extremely Heavy Rain

Thunder & Lightning

Hailstorm

Dust Raising Winds

Heavy Snow

Dust Storm

Heat Wave

Warm Night

Hot Day

Hot & Humid

Strong Surface Winds

Cold Wave

Cold Day

Ground Frost

COLOUR CODED WARNING

No Warning (No Action)

Watch (Be Aware)

Alert (Be Prepared To Take Action)

Warning (Take Action)

Probabilistic Forecast

Terms	Probability of Occurrence (%)
Unlikely	< 25
Likely	25 - 50
Very Likely	50 - 75
Most Likely	> 75

* Red colour warning does not mean "Red Alert", Red colour warning means "Take Action".

Forecast and Warning for any day is valid from 0830 hours IST of day till 0830 hours IST of next day.

For more details, kindly visit <https://mausam.imd.gov.in> or contact: 011-2434-4599

(Service to the Nation since 1875)

DEFINITION/CRITERIA

Rain/ Snow *

Heavy: 64.5 to 115.5 mm/cm *
Very Heavy: 115.6 to 204.4 mm/cm *
Extremely Heavy: > 204.4 mm/cm *

Heat Wave

When maximum temperature of a station reaches $\geq 40^{\circ}\text{C}$ for plains and $\geq 30^{\circ}\text{C}$ for hilly regions
(a) Based on Departure from normal

Heat Wave: Maximum Temperature Departure from normal 4.5°C to 6.4°C .

Severe Heat Wave: Maximum Temperature Departure from normal $\geq 6.5^{\circ}\text{C}$

(b). Based on Actual maximum temperature

Heat Wave: When actual maximum temperature $\geq 45^{\circ}\text{C}$.

Severe Heat Wave: When actual maximum temperature $\geq 47^{\circ}\text{C}$.

(c). Criteria for heat wave for coastal stations

When maximum temperature departure is $> 4.5^{\circ}\text{C}$ from normal. Heat Wave may be described provided maximum temperature $\geq 37^{\circ}\text{C}$.

Warm Night

When maximum temperature remains 40°C

Warm Night: When minimum temperature departure 4.5°C to 6.4°C .

Severe Warm Night: When minimum temperature departure $> 6.4^{\circ}\text{C}$.

Cold Wave

When minimum temperature of a station $\leq 10^{\circ}\text{C}$ for plains and $\leq 0^{\circ}\text{C}$ for hilly regions.

(a). Based on departure

Cold Wave: Minimum Temperature Departure from normal -4.5°C to -6.4°C .

Severe Cold Wave: Minimum Temperature Departure from normal $\leq -6.5^{\circ}\text{C}$

(b) Based on actual Minimum Temperature (for Plains only)

Cold Wave: When Minimum Temperature is $\leq 4.0^{\circ}\text{C}$

Severe Cold Wave: When Minimum Temperature is $\leq 2.0^{\circ}\text{C}$

(c) For Coastal Stations

When Minimum Temperature departure is $\leq -4.5^{\circ}\text{C}$ & actual Minimum Temperature is $\leq 15^{\circ}\text{C}$

Cold Day

When minimum temperature of a station $\leq 10^{\circ}\text{C}$ for plains and $\leq 0^{\circ}\text{C}$ for hilly regions

Based on departure

Cold Day: Maximum Temperature Departure from normal -4.5°C to -6.4°C .

Severe Cold Day: Maximum Temperature Departure from normal $\leq -6.5^{\circ}\text{C}$

Fog

Phenomenon of small droplets suspended in air and the horizontal visibility $< 1\text{km}$

Moderate Fog: When the visibility between 500-200 metres

Dense Fog: when the visibility between 50- 200 metres

Very Dense Fog: when the visibility < 50 metres

Thunderstorm

Sudden electrical discharges manifested by a flash of light (Lightning) and a sharp rumbling sound (thunder)

Dust/Sand Storm

An ensemble of particles of dust or sand energetically lifted to great heights by a strong and turbulent wind.

Frost

Ice deposits on ground

Air temperature $\leq 4^{\circ}\text{C}$ (over Plains)

Squall

A strong wind that rises suddenly, lasts for atleast 1 minute.

Moderate: Wind speed 52-61 kmph

Severe: Wind speed 62-67 kmph

Very Severe: Wind speed > 67 kmph

Sea State

Effect of various waves in the sea over specific area

Rough to very rough: Wind speed 41-62 kmph (22-33 knots) & Wave height 2.5-6 metre

High to very high: Wind speed 63-117 kmph (34-63 knots) & Wave height 6-14 metre

Phenomenal: Wind speed > 117 kmph (> 63 knots) & Wave height > 14 metre

Cyclone

Cyclonic Storm: Wind speed 62-87 kmph (34-47 knots)

Severe Cyclonic Storm: Wind speed 88-117 kmph (48-63 knots)

Very Severe Cyclonic Storm: Wind speed 118-165 kmph (64 - 89 knots)

Extremely Severe Cyclonic Storm: Wind speed 166-220 kmph (90 -119 knots)

Super Cyclone Storm: Wind speed > 220 kmph (> 119 knots)

* Red colour warning does not mean "Red Alert", Red colour warning means "Take Action".

Forecast and Warning for any day is valid from 0830 hours IST of day till 0830 hours IST of next day.

For more details, kindly visit <https://mausam.imd.gov.in> or contact: 011-2434-4599

(Service to the Nation since 1875)

Hot and Humid: When maximum temperatures remain 3°C above normal along with the above normal relative humidity.