



**Government of India  
Ministry of Earth Sciences  
India Meteorological Department**



**Press Release**

**Date: 25<sup>th</sup> September, 2025**

**Time of Issue: 1315 hours IST**

**Subject: Heavy to very heavy rainfall likely over Telangana on 25<sup>th</sup> & 26<sup>th</sup>; Vidarbha on 25<sup>th</sup>, Coastal Andhra Pradesh on 26<sup>th</sup>; Odisha on 26<sup>th</sup> & 27<sup>th</sup>; Madhya Maharashtra, Konkan & Goa during 26<sup>th</sup> -30<sup>th</sup>; Marathwada on 27<sup>th</sup> September with extremely heavy rainfall over Konkan & Goa and Ghat areas of Madhya Maharashtra on 27<sup>th</sup> & 28<sup>th</sup> September.**

**Realised weather during past 24 hours till 0830 hours IST of today, the 25<sup>th</sup> September, 2025:**

- ❖ **Heavy to very heavy rainfall (7-20 cm)** has been recorded at isolated places over Chhattisgarh.
- ❖ **Heavy rainfall (7-11 cm)** has been recorded at isolated places over Sub-Himalayan West Bengal, Odisha, Bihar, Vidarbha and Tripura.

For more details of realised weather, kindly refer **Annexure I**.

**Withdrawal of southwest Monsoon:**

- ❖ The **line of withdrawal of southwest monsoon** continues to pass through 37.5°N/ 73°E, Rampur Bushahr, Haridwar, Muradabad, Etawah, Banswara, Valabh, Vidyanagar, Veraval, 20.5°N/69°E.
- ❖ Conditions are favourable for further withdrawal of southwest monsoon from remaining parts of Gujarat, Rajasthan, Himachal Pradesh and Jammu & Kashmir; some more parts of Madhya Pradesh, Uttar Pradesh and Uttarakhand during next 2 days. (**Annexure II**)

**i. Weather Systems, Forecast and Warnings (refer to Annexure III & IV):**

- ❖ Yesterday's **low-pressure area** over North Odisha and adjoining areas of Northwest Bay of Bengal & Gangetic West Bengal became less marked at 1730 hours IST of 24<sup>th</sup> September. However, the associated **cyclonic circulation** lay over the same region extending upto middle tropospheric levels. It lay over northwest & adjoining westcentral Bay of Bengal and adjoining south Odisha-North Andhra Pradesh coasts at 0530 hours IST and persisted over the same region at 0830 hours IST of today, the 25<sup>th</sup> September extending upto middle tropospheric levels.
- ❖ Yesterday's **upper air cyclonic circulation** over coastal areas of central Myanmar and adjoining eastcentral Bay of Bengal moved nearly westwards and lay over eastcentral & adjoining northeast Bay of Bengal at 0530 hrs IST and persisted over the same region, extending upto mid-tropospheric levels at 0830 hrs IST of today, the 25<sup>th</sup> September. It is likely to move nearly westwards gradually. Under its influence, a **low-pressure area** is likely to form over north and adjoining central Bay of Bengal during next 12 hours. Moving nearly westwards, it is very likely to concentrate into a **depression** over northwest and adjoining westcentral Bay of Bengal off South Odisha- North Andhra Pradesh coasts on 26<sup>th</sup> September. It is very likely to cross South Odisha-North Andhra Pradesh coasts around 27<sup>th</sup> September morning.
- ❖ A trough runs from the upper air cyclonic circulation over northwest & adjoining westcentral Bay of Bengal and adjoining south Odisha-North Andhra Pradesh coasts to south Maharashtra Coast across Telangana, North Interior Karnataka in lower & middle tropospheric levels.

**Under the influence of these systems, the following weather is likely:**

**East & Central India:**

- ❖ Light to moderate rain/thunderstorm at most/many places with isolated **heavy rainfall** likely over Chhattisgarh, Vidarbha during 25<sup>th</sup> -29<sup>th</sup>; East Madhya Pradesh on 25<sup>th</sup>, 29<sup>th</sup> & 30<sup>th</sup>; West Madhya Pradesh during 28<sup>th</sup> -30<sup>th</sup>; during; Andaman & Nicobar Islands on 25<sup>th</sup>, 27<sup>th</sup> September & 01<sup>st</sup> October; Gangetic West Bengal on 27<sup>th</sup>; Odisha

during 25<sup>th</sup>-27<sup>th</sup> September with **very heavy rainfall over Vidarbha on 25<sup>th</sup>; Odisha on 26<sup>th</sup> & 27<sup>th</sup> September.**

- ❖ Thunderstorm & gusty winds (speed reaching 30-50 kmph) very likely over Andaman & Nicobar Islands, Vidarbha, Chhattisgarh during next 5 days; Gangetic West Bengal, Odisha during 25<sup>th</sup>-28<sup>th</sup> September.

#### **West India:**

- ❖ Light to moderate rain/thunderstorm at many/some places with **isolated heavy rainfall** likely over Madhya Maharashtra, Konkan & Goa during 26<sup>th</sup> September-01<sup>st</sup> October; Marathwada during 25<sup>th</sup> -28<sup>th</sup>; Gujarat Region during 27<sup>th</sup>-30<sup>th</sup>; Saurashtra & Kutch during 28<sup>th</sup>-30<sup>th</sup> September with **very heavy rainfall over Marathwada on 27<sup>th</sup> September and Madhya Maharashtra, Konkan & Goa on 29<sup>th</sup> with Extremely heavy rainfall also likely at isolated places over Konkan & Goa and Ghat areas of Madhya Maharashtra on 27<sup>th</sup> & 28<sup>th</sup> September.**

#### **Northeast India:**

- ❖ Light/moderate rain/thunderstorm at some/isolated places with isolated **heavy rainfall** likely over Assam & Meghalaya on 25<sup>th</sup>, during 27<sup>th</sup> September-01<sup>st</sup> October; Nagaland, Manipur, Mizoram & Tripura on 25<sup>th</sup> during 29<sup>th</sup> September-01<sup>st</sup> October and Arunachal Pradesh on 01<sup>st</sup> October.

#### **South Peninsular India:**

- ❖ Light to moderate rain/thunderstorm at many/some places with isolated **heavy rainfall** likely over Telangana, Tamil Nadu, Kerala & Mahe, Coastal Andhra Pradesh & Yanam during 25<sup>th</sup> -27<sup>th</sup>; Lakshadweep on 25<sup>th</sup> & 26<sup>th</sup>; North Interior Karnataka during 26<sup>th</sup> -29<sup>th</sup>; South Interior Karnataka on 26<sup>th</sup>; Rayalaseema, Coastal Karnataka on 26<sup>th</sup> & 27<sup>th</sup> September with **very heavy rainfall** over Telangana on 25<sup>th</sup> & 26<sup>th</sup> and Coastal Andhra Pradesh & Yanam on 26<sup>th</sup> September.
- ❖ Strong surface winds (speed reaching 40-50 kmph) very likely over Coastal Andhra Pradesh & Yanam during next 5 days.
- ❖ Strong surface winds (speed reaching 30-40 kmph) very likely over Rayalaseema during next 5 days; Interior Karnataka during 25<sup>th</sup> -27<sup>th</sup> September.

#### **Fishermen warnings:**

Squally weather with wind speed reaching 35-45 gusting to 55 kmph with moderate to rough sea condition is likely to prevail over North & Central Bay of Bengal and along & off Andhra Pradesh-Odisha-West Bengal-Bangladesh-Myanmar coasts and North Andaman Sea during on 25<sup>th</sup> September.

Winds would gradually increase becoming 40-50 gusting to 60 kmph with Rough to Very Rough Sea condition is likely to prevail over North and Central Bay of Bengal and along & off Andhra Pradesh- Odisha- West Bengal- Bangladesh coasts by morning of 26<sup>th</sup> September. It would gradually increase becoming squally wind speed reaching 45-55 gusting to 65 kmph with Rough to Very Rough Sea condition over North and Central Bay of Bengal and along & off Andhra Pradesh- Odisha- West Bengal coasts from 26<sup>th</sup> September evening till 27<sup>th</sup> September.

**Fishermen are advised not to venture into North & Central Bay of Bengal and along & off Odisha-West Bengal-Bangladesh-Myanmar coasts and North Andaman Sea during on 25<sup>th</sup> September.**

#### **ii. Weather conditions and forecast over Delhi/NCR during 25<sup>th</sup> September to 28<sup>th</sup> September, 2025 (Annexure V)**

**For more details, kindly refer National Weather Bulletin:**

[https://mausam.imd.gov.in/responsive/all\\_india\\_forecast\\_bulletin.php](https://mausam.imd.gov.in/responsive/all_india_forecast_bulletin.php)

**For District wise warnings refer:** <https://mausam.imd.gov.in/responsive/districtWiseWarningGIS.php>

**For Fishermen warning refer** <https://rsmcnewdelhi.imd.gov.in/fishermen-warning.php>

**Rainfall recorded (in cm) during past 24 hours till 0830 hours IST of today, the 25<sup>th</sup> September ( $\geq 7$ cm):**

**Chhattisgarh:** Rajim (dist Gariaband), Gobra Nawapara (dist Raipur) 14 Each; Arang (dist Raipur) 13; Balod (dist Balod), Gundardehi (dist Balod), Patan (dist Durg), Mohla (dist Mohala Manpur Chowki), Mandir Hasoud (dist Raipur) 11 Each; Baloda Bazar (dist Baloda Bazar), Khadgaon (dist Mohala Manpur Chowki) 10 Each; Dhamtari (dist Dhamtari), Pallari/Palari (dist Baloda Bazar), Doundi (dist Balod), Pakhanjur (dist Kanker), Bhakhara (dist Dhamtari), Aundhi (dist Mohala Manpur Chowki) 9 Each; Mahasamund (dist Mahasamund), Mana-Raipur-AP (dist Raipur), Gurur (dist Balod), Magarlod (dist Dhamtari), Antagarh (dist Kanker), Pithora (dist Mahasamund), Manpur (dist Mohala Manpur Chowki), Raipur City (dist Raipur), Bhilai (dist Durg) 8 Each; Raipur (dist Raipur), Kashdol (dist Baloda Bazar), Kurud (dist Dhamtari), Chhura (dist Gariaband), Mainpur (dist Gariaband), Charama (dist Kanker), Nerharpur (dist Kanker), Orcha (dist Narayanpur), Labhandih (dist Raipur), Lawan (dist Baloda Bazar), Kukrel (dist Dhamtari), Chhotedongar (dist Narayanpur), Dharshiva (dist Raipur) 7 Each;

**Vidarbha:** Gadchiroli (dist Gadchiroli) 9; Armori (dist Gadchiroli), Etapalli (dist Gadchiroli) 8 Each; Ahiri (dist Gadchiroli), Mulchera (dist Gadchiroli), Bhamragad (dist Gadchiroli) 7 Each;

**Tripura:** Belonia ARG (dist South Tripura) 8;

**Odisha:** Nawapara (dist Nawapara) 8; Tentulikhunti (dist Nawarangpur), Th Rampur (dist Kalahandi), Nandahandi (dist Nawarangpur) 7 Each;

**Telangana:** Eturnagaram (dist Mulugu) 7;

**Bihar:** Chanpatia (dist West Champaran) 7;

**Sub Himalayan West Bengal:** Bhagatpur Tea Estate (dist Jalpaiguri) 7.

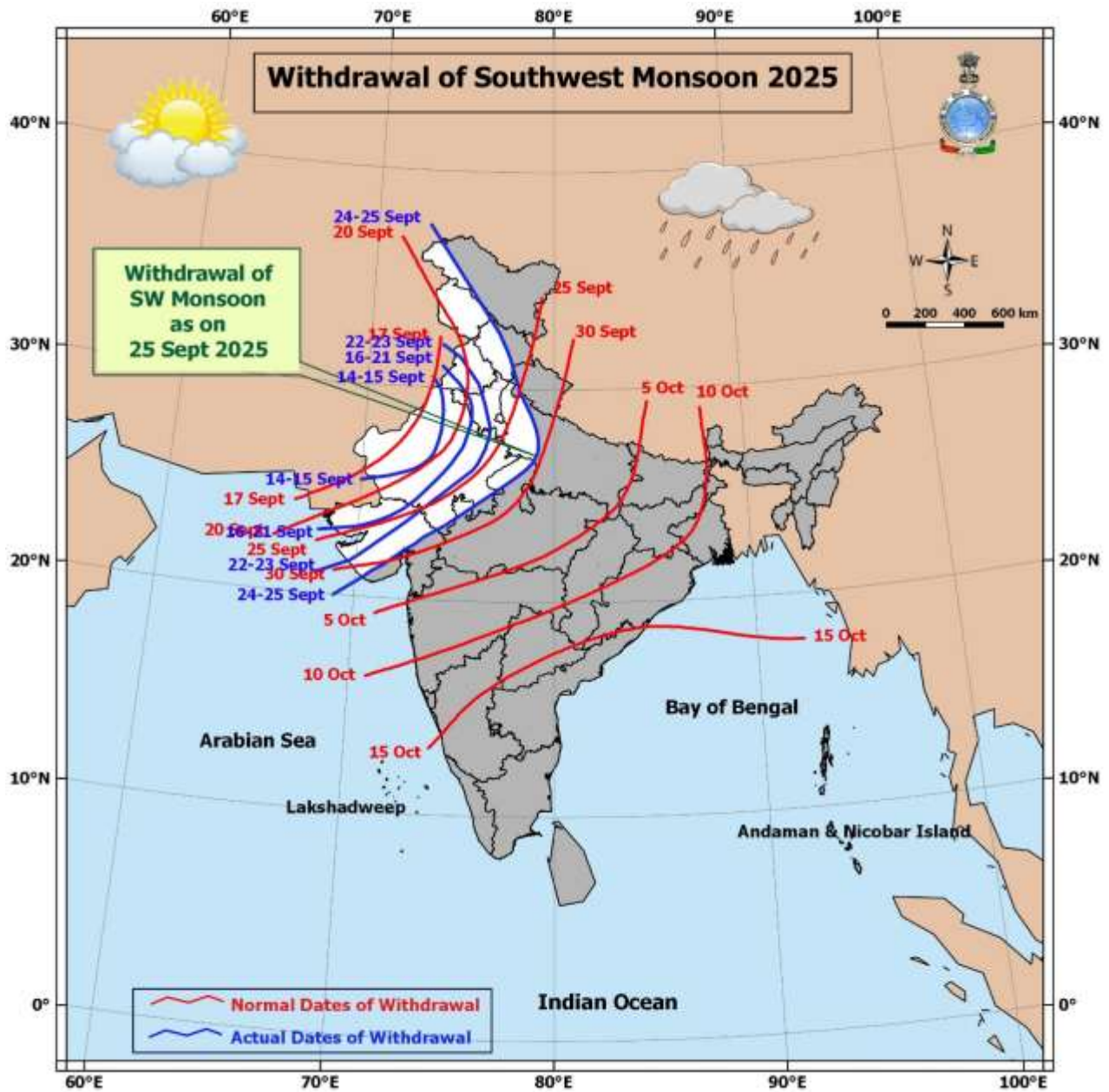
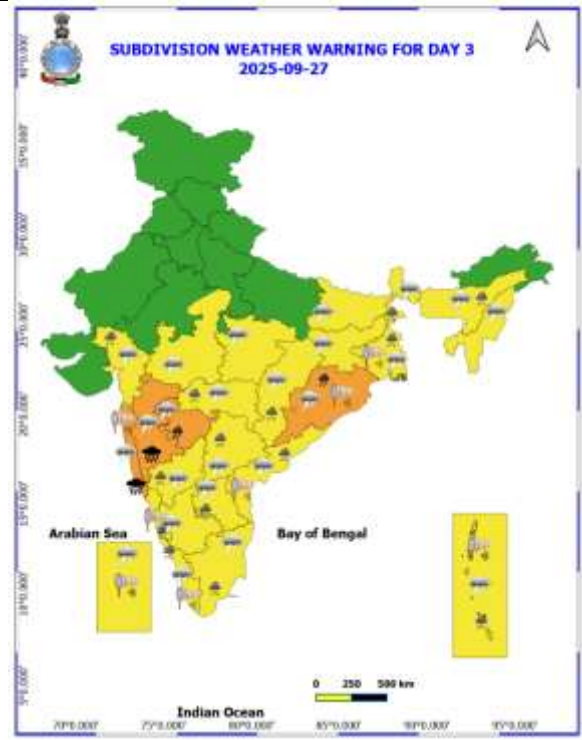
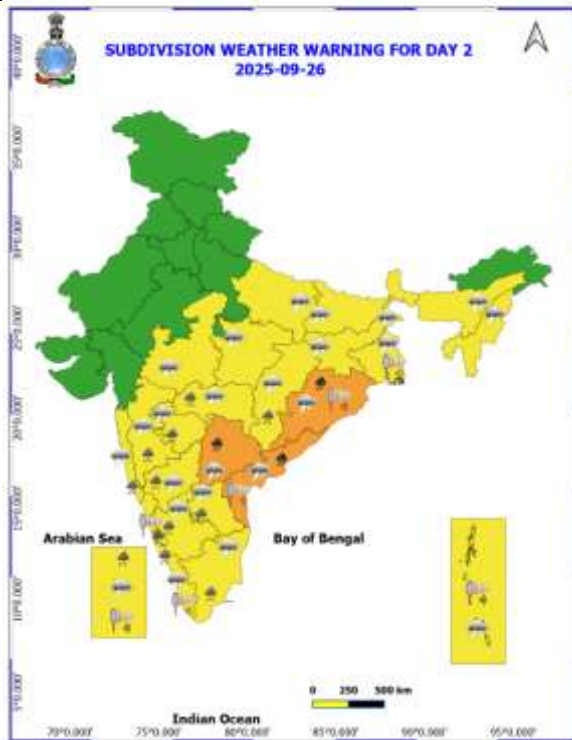
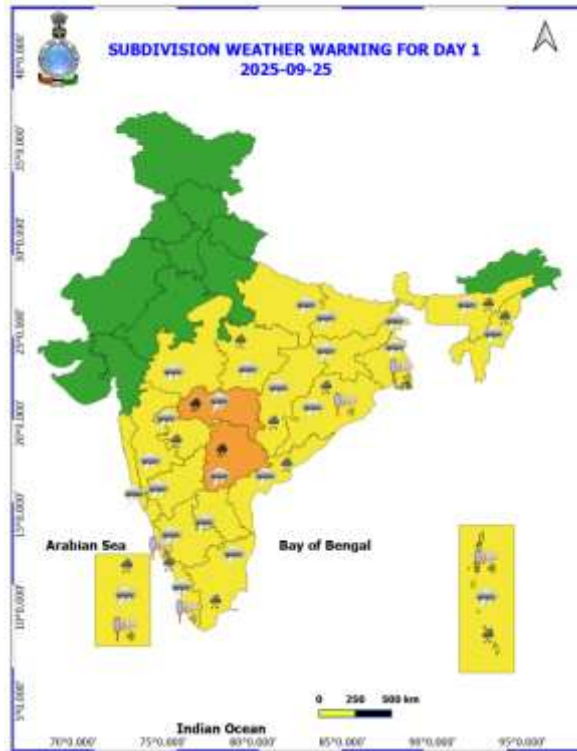
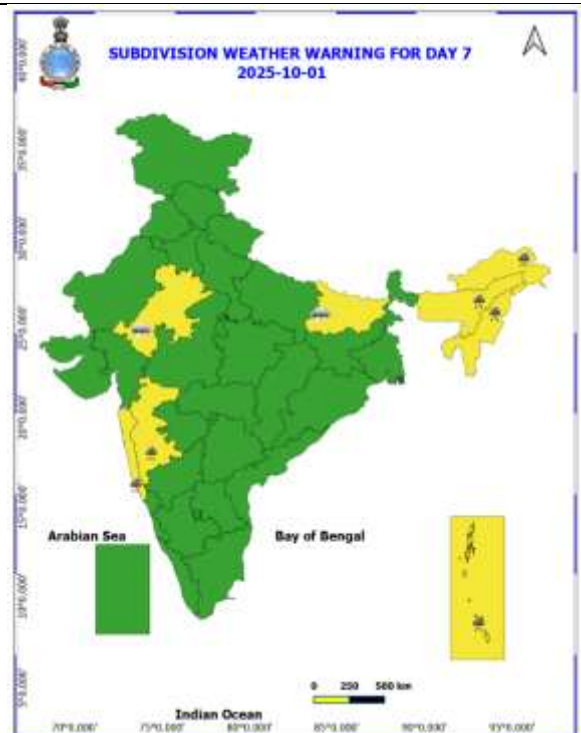
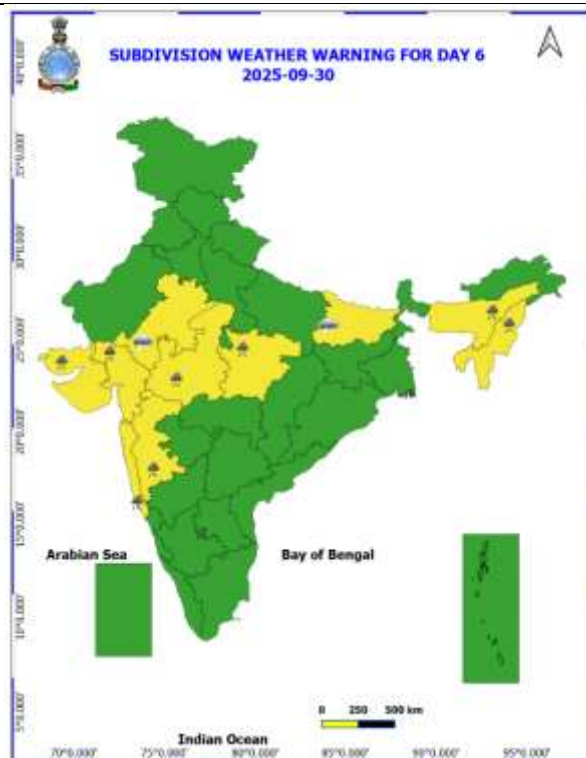
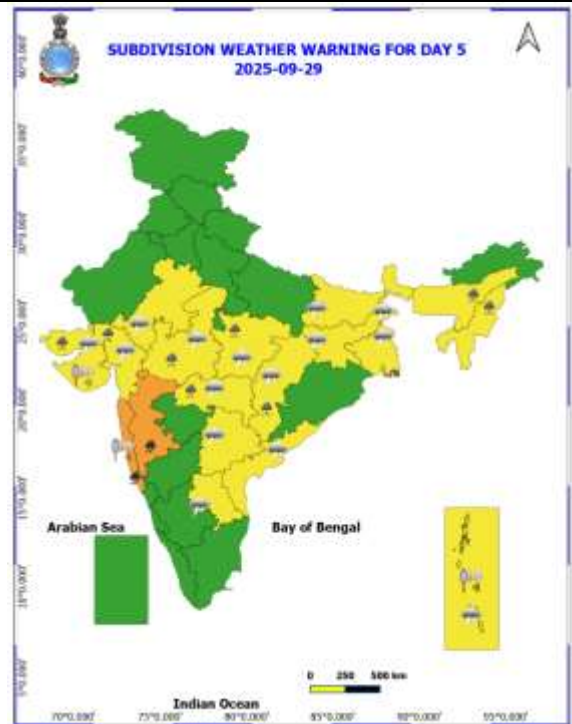
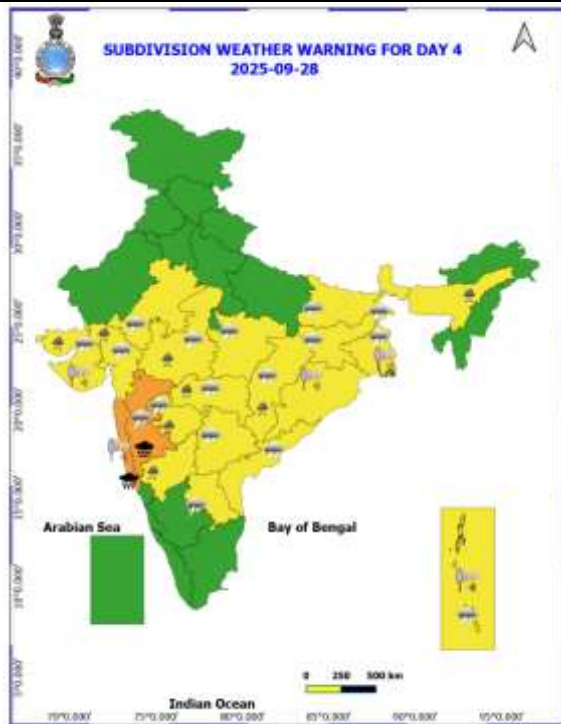




Table-1								
7 Days Rainfall Forecast								
S.No.	Subdivision	25- Sep	26- Sep	27- Sep	28- Sep	29- Sep	30- Sep	1- Oct
		Day 1	Day 2	Day 3	Day 4	Day 5	Day 6	Day 7
1	ANDAMAN & NICOBAR ISLANDS	FWS	FWS	FWS	FWS	FWS	FWS	FWS
2	ARUNACHAL PRADESH	ISOL	ISOL	ISOL	ISOL	SCT	SCT	FWS
3	ASSAM & MEHGHALAYA	ISOL	ISOL	SCT	SCT	SCT	SCT	FWS
4	NAGALAND, MANIPUR, MIZORAM AND TRIPURA	SCT	SCT	SCT	SCT	SCT	SCT	SCT
5	SUB HIMALAYAN WEST BENGAL & SIKKIM	SCT	FWS	FWS	FWS	SCT	FWS	FWS
6	GANGETIC WEST BENGAL	FWS	WS	WS	FWS	SCT	FWS	FWS
7	ODISHA	WS	WS	FWS	FWS	FWS	FWS	FWS
8	JHARKHAND	SCT	FWS	FWS	SCT	SCT	FWS	FWS
9	BIHAR	ISOL	ISOL	SCT	SCT	SCT	SCT	SCT
10	EAST UTTAR PRADESH	ISOL	ISOL	SCT	ISOL	ISOL	SCT	SCT
11	WEST UTTAR PRADESH	DRY	ISOL	ISOL	ISOL	ISOL	ISOL	ISOL
12	UTTARAKHAND	ISOL	ISOL	ISOL	ISOL	ISOL	ISOL	ISOL
13	HARYANA, CHANDIGARH & DELHI	DRY	DRY	DRY	DRY	DRY	DRY	DRY
14	PUNJAB	DRY	DRY	DRY	DRY	DRY	DRY	DRY
15	HIMACHAL PRADESH	DRY	DRY	DRY	DRY	DRY	DRY	DRY
16	JAMMU AND KASHMIR AND LADAKH	ISOL	DRY	DRY	DRY	DRY	DRY	DRY
17	WEST RAJASTHAN	DRY	DRY	DRY	DRY	DRY	DRY	DRY
18	EAST RAJASTHAN	DRY	DRY	ISOL	ISOL	ISOL	ISOL	ISOL
19	WEST MADHYA PRADESH	ISOL	SCT	FWS	FWS	WS	WS	WS
20	EAST MADHYA PRADESH	FWS	FWS	WS	WS	WS	WS	WS
21	GUJRAT REGION	SCT	SCT	SCT	FWS	FWS	FWS	FWS
22	SAURASHTRA & KUTCH	ISOL	ISOL	ISOL	SCT	FWS	FWS	FWS
23	KONKAN & GOA	WS	WS	WS	WS	WS	WS	WS
24	MADHYA MAHARASHTRA	FWS	WS	WS	WS	WS	WS	WS
25	MARATHWADA	FWS	WS	WS	WS	FWS	FWS	FWS
26	VIDARBHA	WS	WS	WS	WS	FWS	FWS	WS
27	CHHATTISGARH	WS	WS	WS	WS	FWS	FWS	FWS
28	COASTAL ANDHRA PRADESH	FWS	WS	WS	FWS	SCT	SCT	ISOL
29	TELANGANA	WS	WS	WS	FWS	FWS	FWS	WS
30	RAYALASEEMA	SCT	WS	FWS	SCT	ISOL	ISOL	ISOL
31	TAMILNADU & PUDUCHERRY	ISOL	ISOL	ISOL	ISOL	ISOL	ISOL	ISOL
32	COSTAL KARNATAKA	WS	WS	WS	WS	WS	WS	WS
33	NORTH INTERIOR KARNATAKA	SCT	FWS	WS	FWS	SCT	SCT	SCT
34	SOUTH INTERIOR KARNATAKA	SCT	FWS	SCT	SCT	SCT	SCT	SCT
35	KERALA AND MAHE	WS	WS	WS	WS	WS	FWS	FWS
36	LAKSHADWEEP	WS	WS	WS	FWS	FWS	FWS	FWS

- As the lead period increases forecast accuracy decrease.





- Action may be taken based on ORANGE AND REDCOLOUR warnings.
- Vulnerable regions likely urban and hilly areas action may be initiated for heavy rainfall warning.
- As the lead period increases forecast accuracy decreases.

Detailed districtwise Multi Hazard weather warning for next five days available at  
<https://mausam.imd.gov.in/responsive/districtWiseWarningGIS.php>



## Weather forecast over Delhi/NCR during 25<sup>th</sup> to 28<sup>th</sup> September 2025

### Past Weather:

There has been no large change in the minimum and maximum temperatures over Delhi/NCR during the past 24 hours. The maximum and minimum temperatures over Delhi were around 34 to 36°C and 23 to 24°C respectively. The minimum and maximum temperatures were near normal. Mainly clear sky conditions with predominant surface wind from the northwest/west direction with wind speeds up to 20 kmph with gusty wind up to 32 kmph prevailed during the past 24 hours. Mainly clear sky conditions with a wind speed of less than 14 kmph from the west direction prevailed over the region in the forenoon today.

### Weather Forecast:

**25.09.2025:** Mainly clear sky. The maximum and minimum temperatures over Delhi are likely to be in the range of 34 to 36°C. The maximum temperature will be near normal. The predominant surface wind will likely to be from the northwest direction with a wind speed of up to 20-25 kmph during afternoon hours. The wind speed will decrease becoming less than 15 kmph from the northwest direction during the evening and night.

**26.09.2025:** Mainly clear sky. The maximum and minimum temperatures over Delhi are likely to be in the range of 33 to 35°C and 23 to 25°C respectively. The minimum temperature will be near normal and the maximum temperature will be near normal. The predominant surface wind will likely to be from the northwest direction with a wind speed of up to 10-15 kmph during morning hours. The wind speed will gradually increase becoming less than 20 kmph from the northwest direction in the afternoon. The wind speed will decrease becoming less than 12 kmph from the northeast direction during the evening and night.

**27.09.2025:** Partly cloudy sky. The maximum and minimum temperatures over Delhi are likely to be in the range of 34 to 36°C and 23 to 25°C respectively. The minimum temperature will be near normal and the maximum temperature will be near normal. The predominant surface wind will likely to be from the northeast direction with a wind speed of up to 08-12 kmph during morning hours. The wind speed will gradually increase becoming less than 15 kmph from the northeast direction in the afternoon. The wind speed will decrease becoming less than 10 kmph from the northeast direction during the evening and night.

**28.09.2025:** Partly cloudy sky. The maximum and minimum temperatures over Delhi are likely to be in the range of 35 to 37°C and 24 to 26°C respectively. The minimum temperature will be near normal and the maximum temperature will be near normal. The predominant surface wind will likely to be from the northeast direction with a wind speed of up to 08 - 12 kmph during morning hours. The wind speed will gradually increase becoming less than 15 kmph from the northeast direction in the afternoon. The wind speed will decrease becoming less than 10 kmph from the northeast direction during the evening and night.

### Impact & Action Suggested due to

- ❖ **Extremely heavy rainfall ( $\geq 21$  cm)** also likely at isolated places over Konkan & Goa and ghat areas of Madhya Maharashtra on 27<sup>th</sup> & 28<sup>th</sup> September.
- ❖ **Very heavy rainfall (12-20 cm)** at isolated places over Vidarbha on 25<sup>th</sup>; Telangana on 25<sup>th</sup> & 26<sup>th</sup>; Odisha, on 26<sup>th</sup> & 27<sup>th</sup>; Coastal Andhra Pradesh & Yanam on 26<sup>th</sup>; Madhya Maharashtra, Konkan & Goa on 29<sup>th</sup>; Marathawada on 27<sup>th</sup> September.

### Impact Expected

- Water logging/ flooding in many parts of low lying area and river banks
- Localized and short term disruption to municipal services (water, electricity, etc.)
- Major disruption of traffic flow. Major roads/local trains affected.
- Possibility of danger to very old buildings and unmaintained structures, falling of trees etc
- Closure of roads crossing low water bridges.

### Action Suggested

- Traffic may be regulated effectively
- People in the affected area may restrict their movement



### Agromet advisories for likely impact of Heavy Rainfall

- In **Odisha**, make provision for draining out excess rain water from fields of rice, groundnut and vegetables in **North Eastern Ghat Zone**; pulses, maize, groundnut, cotton and vegetables in **Western Undulating Zone**; and rice, maize, finger millet, vegetables, ginger and turmeric in **Eastern Ghat High Land Zone** and **South Eastern Ghat Zone**.
- In **Chhattisgarh**, ensure adequate drainage facilities in vegetable fields and banana and papaya plantations in **Bastar Plateau Zone** and rice, maize, pigeon pea, black gram and groundnut fields in **Chattisgarh Plain Zone**.
- In **Maharashtra**, keep the harvested produce of green gram and black gram at safer places and make provision to drain out excess rain water from fields of cotton, pigeon pea, soybean, maize, vegetables and fruit in **Madhya Maharashtra**. Make arrangements to drain out excess water from vegetable fields and fruit orchards in **Konkan** and pigeon pea, cotton, soybean, sorghum, maize and vegetable fields in **Vidarbha**. In **Marathwada**, undertake harvesting of sapota and custard apple and store in safe place. Provide adequate drainage facilities in fields of soybean, cotton, pigeon pea, vegetables and fruit orchards and keep the harvested produce of black gram at safer places.
- In **Andhra Pradesh**, make arrangements to drain out excess water from fields of rice, maize, pigeon pea and cotton in **Krishna Godavari Zone**; rice, maize, cotton, pigeon pea, green gram, groundnut, sugarcane and vegetables in **North Coastal Zone** and rice, sugarcane, maize, finger millet, groundnut, ginger, turmeric, vegetables and fruit orchards in **High Altitude Tribal Zone**.
- In **Telangana**, make provision to drain out excess rain water from fields of rice, maize, cotton, soybean, pigeon pea and turmeric in **Northern Telangana Zone** and rice, cotton, soybean, maize and pigeon pea in **Southern Telangana Zone**.

### Livestock / Fishery

- Keep the animals inside the shed during heavy rainfall and provide them balanced feed.
- Store feed and fodder in a safe place to prevent spoilage.
- Construct an outlet with proper netting around the ponds to drain out excess water, thereby preventing fish from escaping in case of overflow.

### Agromet advisories for likely impact of Thunderstorm / Gusty Winds / Squally Winds

- Provide mechanical support to horticultural crops and staking or support to vegetables and young fruit plants / fruit-bearing plants to avoid lodging due to strong winds.

### Legends & abbreviations:

- ❖ **Heavy Rain:** 64.5-115.5mm; **Very Heavy Rain:** 115.6-204.4mm; **Extremely Heavy Rain:** >204.4mm.
- ❖ **Obsy:** Observatory; Automatic Weather Station; **ARG:** Automatic Rain Gauge; **dist:** District; **NH:** National Highway; **KVK:** Krishi Vigyan Kendra; **DVC:** Damodar Valley Corporation; **PTO:** Part Time Office, **Aero:** Aerodrome, **IAF:** Indian Air Force.
- ❖ **Region wise classification of meteorological Sub-Divisions:**
  - **Northwest India:** Western Himalayan Region (Jammu-Kashmir-Ladakh-Gilgit-Baltistan-Muzaffarabad, Himachal Pradesh and Uttarakhand); Punjab, Haryana-Chandigarh-Delhi; West Uttar Pradesh, East Uttar Pradesh, West Rajasthan and East Rajasthan.
  - **Central India:** West Madhya Pradesh, East Madhya Pradesh, Vidarbha and Chhattisgarh.
  - **East India:** Bihar, Jharkhand, Sub-Himalayan West Bengal & Sikkim; Gangetic West Bengal, Odisha and Andaman & Nicobar Islands.
  - **Northeast India:** Arunachal Pradesh, Assam & Meghalaya and Nagaland, Manipur, Mizoram & Tripura.
  - **West India:** Gujarat Region, Saurashtra & Kutch, Konkan & Goa, Madhya Maharashtra and Marathawada.
  - **South India:** Coastal Andhra Pradesh & Yanam, Telangana, Rayalaseema, Coastal Karnataka, North Interior Karnataka, South Interior Karnataka, Kerala & Mahe, Tamil Nadu, Puducherry & Karaikal and Lakshadweep.

## LEGENDS

1. अंडमान और निकोबार द्वीपसमूह

2. अरुणाचल प्रदेश

3. असम और मेघालय

4. नागालैंड, मणिपुर, मिजोरम और त्रिपुरा

5. उप-हिमालयी पश्चिम बंगाल और सिक्किम

6. गंगीय पश्चिम बंगाल

7. ओडिशा

8. झारखंड

9. बिहार

10. पूर्वी उत्तर प्रदेश

11. पश्चिम उत्तर प्रदेश

12. उत्तराखंड

13. हरियाणा, चंडीगढ़ और दिल्ली

14. पंजाब

15. हिमाचल प्रदेश

16. जम्मू और कश्मीर और लद्दाख

17. पश्चिम राजस्थान

18. पूर्वी राजस्थान

19. पश्चिम मध्य प्रदेश

20. पूर्वी मध्य प्रदेश

21. गुजरात

22. सौराष्ट्र

23. कोंकण और गोवा

24. मध्य महाराष्ट्र

25. मराठवाड़ा

26. विदर्भ

27. छत्तीसगढ़

28. तटीय आंध्र प्रदेश और यनम

29. तेलंगाना

30. रायलसीमा

31. तमिलनाडु, पुडुचेरी और कराईकल

32. तटीय कर्नाटक

33. आंतरिक उत्तरी कर्नाटक

34. आंतरिक दक्षिणी कर्नाटक

35. केरल और माहे

36. लक्षद्वीप



1. Andaman & Nicobar Islands

2. Arunachal Pradesh

3. Assam & Meghalaya

4. Nagaland, Manipur, Mizoram & Tripura

5. Sub-Himalayan West Bengal & Sikkim

6. Gangetic West Bengal

7. Odisha

8. Jharkhand

9. Bihar

10. East Uttar Pradesh

11. West Uttar Pradesh

12. Uttarakhand

13. Haryana, Chandigarh & Delhi

14. Punjab

15. Himachal Pradesh

16. Jammu & Kashmir and Ladakh

17. West Rajasthan

18. East Rajasthan

19. West Madhya Pradesh

20. East Madhya Pradesh

21. Gujarat

22. Saurashtra

23. Konkan & Goa

24. Madhya Maharashtra

25. Marathwada

26. Vidarbha

27. Chhattisgarh

28. Coastal Andhra Pradesh & Yanam

29. Telangana

30. Rayalaseema

31. Tamilnadu, Puducherry & Karaikal

32. Coastal Karnataka

33. North Interior Karnataka

34. South Interior Karnataka

35. Kerala & Mahe

36. Lakshadweep

## SPATIAL DISTRIBUTION (% of Stations reporting)

% Stations	Category	% Stations	Category
76-100	Widespread (WS/Most Places)	26-50	Scattered (SCT/A Few Places)
51-75	Fairly Widespread (FWS/Many Places)	1-25	Isolated (ISOL)



Fog



Heavy Snow



Cold Wave



Heavy Rain



Dust Storm



Cold Day



Very Heavy Rain



Heat Wave



Ground Frost



Extremely Heavy Rain



Warm Night



Thunder & Lightning



Hot Day



Hailstorm



Hot & Humid



Dust Raising Winds



Strong Surface Winds

### COLOUR CODED WARNING

No Warning (No Action)

Watch (Be Aware)

Alert (Be Prepared To Take Action)

Warning (Take Action)

### Probabilistic Forecast

Terms	Probability of Occurrence (%)
Unlikely	< 25
Likely	25 - 50
Very Likely	50 - 75
Most Likely	> 75

\* Red colour warning does not mean "Red Alert", Red colour warning means "Take Action".

Forecast and Warning for any day is valid from 0830 hours IST of day till 0830 hours IST of next day.

For more details, kindly visit <https://mausam.imd.gov.in> or contact: 011-2434-4599

(Service to the Nation since 1875)



## DEFINITION/CRITERIA

### Rain/ Snow \*

Heavy: 64.5 to 115.5 mm/cm \*  
Very Heavy: 115.6 to 204.4 mm/cm \*  
Extremely Heavy: > 204.4 mm/cm \*

### Heat Wave

When maximum temperature of a station reaches  $\geq 40^{\circ}\text{C}$  for plains and  $\geq 30^{\circ}\text{C}$  for hilly regions

(a) Based on Departure from normal

Heat Wave: Maximum Temperature Departure from normal  $4.5^{\circ}\text{C}$  to  $6.4^{\circ}\text{C}$ .

Severe Heat Wave: Maximum Temperature Departure from normal  $\geq 6.5^{\circ}\text{C}$

(b). Based on Actual maximum temperature

Heat Wave: When actual maximum temperature  $\geq 45^{\circ}\text{C}$ .

Severe Heat Wave: When actual maximum temperature  $\geq 47^{\circ}\text{C}$ .

(c). Criteria for heat wave for coastal stations

When maximum temperature departure is  $> 4.5^{\circ}\text{C}$  from normal. Heat Wave may be described provided maximum temperature  $\geq 37^{\circ}\text{C}$ .

### Warm Night

When maximum temperature remains  $40^{\circ}\text{C}$

Warm Night: When minimum temperature departure  $4.5^{\circ}\text{C}$  to  $6.4^{\circ}\text{C}$ .

Severe Warm Night: When minimum temperature departure  $> 6.4^{\circ}\text{C}$ .

### Cold Wave

When minimum temperature of a station  $\leq 10^{\circ}\text{C}$  for plains and  $\leq 0^{\circ}\text{C}$  for hilly regions.

(a). Based on departure

Cold Wave: Minimum Temperature Departure from normal  $-4.5^{\circ}\text{C}$  to  $-6.4^{\circ}\text{C}$ .

Severe Cold Wave: Minimum Temperature Departure from normal  $\leq -6.5^{\circ}\text{C}$

(b) Based on actual Minimum Temperature (for Plains only)

Cold Wave: When Minimum Temperature is  $\leq 4.0^{\circ}\text{C}$

Severe Cold Wave: When Minimum Temperature is  $\leq 2.0^{\circ}\text{C}$

(c) For Coastal Stations

When Minimum Temperature departure is  $\leq -4.5^{\circ}\text{C}$  & actual Minimum Temperature is  $\leq 15^{\circ}\text{C}$

### Cold Day

When minimum temperature of a station  $\leq 10^{\circ}\text{C}$  for plains and  $\leq 0^{\circ}\text{C}$  for hilly regions

Based on departure

Cold Day: Maximum Temperature Departure from normal  $-4.5^{\circ}\text{C}$  to  $-6.4^{\circ}\text{C}$ .

Severe Cold Day: Maximum Temperature Departure from normal  $\leq -6.5^{\circ}\text{C}$

### Fog

Phenomenon of small droplets suspended in air and the horizontal visibility  $< 1\text{km}$

Moderate Fog: When the visibility between 500-200 metres

Dense Fog: when the visibility between 50- 200 metres

Very Dense Fog: when the visibility  $< 50$  metres

### Thunderstorm

Sudden electrical discharges manifested by a flash of light (Lightning) and a sharp rumbling sound (thunder)

### Dust/Sand Storm

An ensemble of particles of dust or sand energetically lifted to great heights by a strong and turbulent wind.

### Frost

Ice deposits on ground

Air temperature  $\leq 4^{\circ}\text{C}$  ( over Plains)

### Squall

A strong wind that rises suddenly, lasts for atleast 1 minute.

Moderate: Wind speed 52-61 kmph

Severe: Wind speed 62-67 kmph

Very Severe: Wind speed  $> 67$  kmph

### Sea State

Effect of various waves in the sea over specific area

Rough to very rough: Wind speed 41-62 kmph (22-33 knots) & Wave height 2.5-6 metre

High to very high: Wind speed 63-117 kmph ( 34-63 knots) & Wave height 6-14 metre

Phenomenal: Wind speed  $> 117$  kmph ( $> 63$  knots) & Wave height  $> 14$  metre

### Cyclone

Cyclonic Storm: Wind speed 62-87 kmph (34-47 knots)

Severe Cyclonic Storm: Wind speed 88-117 kmph (48-63 knots)

Very Severe Cyclonic Storm: Wind speed 118-165 kmph (64 - 89 knots)

Extremely Severe Cyclonic Storm: Wind speed 166-220 kmph (90 -119 knots)

Super Cyclone Storm: Wind speed  $> 220$  kmph ( $> 119$  knots)

\* Red colour warning does not mean "Red Alert", Red colour warning means "Take Action".

Forecast and Warning for any day is valid from 0830 hours IST of day till 0830 hours IST of next day.

For more details, kindly visit <https://mausam.imd.gov.in> or contact: 011-2434-4599

(Service to the Nation since 1875)

**Hot and Humid:** When maximum temperatures remain  $3^{\circ}\text{C}$  above normal along with the above normal relative humidity.