



Government of India  
Ministry of Earth Sciences  
India Meteorological Department



Press Release

Date: 26<sup>th</sup> September, 2025

Time of Issue: 1345 hours IST

**Subject: Heavy to very heavy rainfall likely over Telangana, Coastal Andhra Pradesh, Odisha, Kerala on 26<sup>th</sup> & 27<sup>th</sup>; Marathwada, Madhya Maharashtra, Konkan & Goa during 26<sup>th</sup>-30<sup>th</sup>; extremely heavy rainfall also likely over Odisha, Telangana on 26<sup>th</sup>, Konkan & Goa and Ghat areas of Madhya Maharashtra on 28<sup>th</sup> September.**

**Realised weather during past 24 hours till 0830 hours IST of today, the 26<sup>th</sup> September, 2025:**

- ❖ Heavy to very heavy rainfall (7-20 cm) has been recorded at isolated places over Tamil Nadu and Kerala.
- ❖ Heavy rainfall (7-11 cm) has been recorded at isolated places over Andaman Islands, East Madhya Pradesh, Telangana and Vidarbha.

For more details of realised weather, kindly refer [Annexure I](#).

**Withdrawal of southwest Monsoon:**

- ❖ The southwest Monsoon has further withdrawn from some more parts of Gujarat, entire Rajasthan, some more parts of Madhya Pradesh & Uttar Pradesh and entire Western Himalayan Region (Jammu-Kashmir-Ladakh-Gilgit-Baltistan-Muzaffarabad, Himachal Pradesh, Uttarakhand) on today 26<sup>th</sup> September 2025.
- ❖ The **line of withdrawal of southwest monsoon** now passes through 20°N/ 69°E, Veraval, Bharuch, Ujjain, Jhansi, Shahjahanpur and 30°N/81°E. ([Annexure II](#))

**i. Weather Systems, Forecast and Warnings (refer to Annexure III & IV):**

- ❖ Under the influence of **upper air cyclonic circulation** over coastal areas of central Myanmar & adjoining eastcentral Bay of Bengal, a **low-pressure area** has formed over central parts of north & adjoining central Bay of Bengal at 1730 hrs IST of 25<sup>th</sup> September, 2025. It concentrated into a **Well marked low Pressure** area over northwest & adjoining central Bay of Bengal at 0530 hrs IST of today and persisted over the same region at 0830 hrs IST of today, the 26<sup>th</sup> September. It is very likely to move westwards and concentrate into a **Depression** over northwest & adjoining westcentral Bay of Bengal off South Odisha- North Andhra Pradesh coasts during next 24 hours. It is very likely to cross South Odisha-North Andhra Pradesh coasts around 27<sup>th</sup> September morning.
- ❖ A trough runs from the **well marked low pressure area** over northwest & adjoining central Bay of Bengal to south Maharashtra Coast across Telangana, North Interior Karnataka in lower & middle tropospheric levels.

**Under the influence of these systems, the following weather is likely:**

**East & Central India:**

- ❖ Light to moderate rain/thunderstorm at most/many places with isolated **heavy rainfall** likely Vidarbha, Gangetic West Bengal, Odisha on 26<sup>th</sup>, 27<sup>th</sup> Sep & 02<sup>nd</sup> October; Jharkhand on 26<sup>th</sup>; Chhattisgarh on 26<sup>th</sup>, 30<sup>th</sup> Sep & 01<sup>st</sup> October; East Madhya Pradesh on 26<sup>th</sup>, 27<sup>th</sup> & during 30<sup>th</sup> September -02<sup>nd</sup> October; West Madhya Pradesh during 27<sup>th</sup> -30<sup>th</sup>; Andaman & Nicobar Islands on 26<sup>th</sup>, 29<sup>th</sup> & 30<sup>th</sup> September; Sub-Himalayan West Bengal & Sikkim on 27<sup>th</sup> September & 02<sup>nd</sup> October with **very heavy rainfall over Odisha on 27<sup>th</sup> and isolated extremely heavy rainfall on 26<sup>th</sup> September.**

- ❖ Thunderstorm & gusty winds (speed reaching 30-50 kmph) very likely over Andaman & Nicobar Islands, Vidarbha, Chhattisgarh, Jharkhand, Bihar, Sub-Himalayan West Bengal & Sikkim during next 5 days; Gangetic West Bengal, Odisha during 26<sup>th</sup>-28<sup>th</sup> September.

#### West India:

- ❖ Light to moderate rain/thunderstorm at many/some places with **isolated heavy rainfall** likely over Madhya Maharashtra, Konkan & Goa during 26<sup>th</sup> September-02<sup>nd</sup> October; Marathwada during 26<sup>th</sup> -29<sup>th</sup>; Gujarat Region during 27<sup>th</sup>-30<sup>th</sup>; Saurashtra & Kutch during 28<sup>th</sup>-30<sup>th</sup> September with **very heavy rainfall over Marathwada on 27<sup>th</sup> & 28<sup>th</sup> and Madhya Maharashtra, Konkan & Goa on 27<sup>th</sup> & 29<sup>th</sup> September with isolated Extremely heavy rainfall over Konkan & Goa and Ghat areas of Madhya Maharashtra on 28<sup>th</sup> September.**

#### Northeast India:

- ❖ Light/moderate rain/thunderstorm at some/isolated places with isolated **heavy rainfall** likely over Assam & Meghalaya during 30<sup>th</sup> September-02<sup>nd</sup> October; Nagaland, Manipur, Mizoram & Tripura during 29<sup>th</sup> September-02<sup>nd</sup> October and Arunachal Pradesh on 01<sup>st</sup> & 02<sup>nd</sup> October with **very heavy rainfall over Assam & Meghalaya and Mizoram on 02<sup>nd</sup> October.**

#### South Peninsular India:

- ❖ Light to moderate rain/thunderstorm at many/some places with isolated **heavy rainfall** likely over Telangana, Tamil Nadu, Coastal Andhra Pradesh & Yanam, Rayalaseema on 26<sup>th</sup> & 27<sup>th</sup>; Kerala & Mahe, Telangana during 26<sup>th</sup>-28<sup>th</sup>; Lakshadweep on 26<sup>th</sup>; Interior Karnataka during 26<sup>th</sup>-28<sup>th</sup>; Coastal Karnataka on 27<sup>th</sup> & 28<sup>th</sup> September with **very heavy rainfall** over Kerala, Telangana, North Interior Karnataka on 26<sup>th</sup> & 27<sup>th</sup>; Coastal Andhra Pradesh & Yanam on 26<sup>th</sup> September **with Extremely heavy rainfall also likely at isolated places over Telangana on 26<sup>th</sup> September.**
- ❖ Strong surface winds (speed reaching 40-50 kmph) very likely over Coastal Andhra Pradesh & Yanam, Tamil Nadu during next 5 days.
- ❖ Strong surface winds (speed reaching 30-40 kmph) very likely over Rayalaseema during next 5 days; Interior Karnataka during 26<sup>th</sup> -27<sup>th</sup> September.

#### Fishermen warnings:

Fishermen are advised not to venture into the following areas during 26<sup>th</sup> September to 01<sup>st</sup> October:

##### Arabian Sea:

- Along and off south Konkan on 26<sup>th</sup> September and entire Konkan & Goa and adjoining sea areas during 27<sup>th</sup> September to 01<sup>st</sup> October, Karnataka, Kerala, Lakshadweep area during 26<sup>th</sup> to 29<sup>th</sup> September and south Gujarat during 27<sup>th</sup> to 29<sup>th</sup> & 30<sup>th</sup> September and entire Gujarat coasts on 29<sup>th</sup> September.
- Some parts of southwest adjoining westcentral Arabian Sea, along and off Somalia coast during 26<sup>th</sup> September to 01<sup>st</sup> October, few parts of eastcentral adjoining northeast Arabian Sea during 27<sup>th</sup> September to 01<sup>st</sup> October.

##### Bay of Bengal:

- Along and off West Bengal Odisha, Bangladesh, Myanmar during 26<sup>th</sup> to 29<sup>th</sup> September.
- Andaman Sea, Andhra Pradesh, Tamil Nadu, Sri Lanka coasts, Gulf of Mannar & adjoining Comorin area during 26<sup>th</sup> September to 01<sup>st</sup> October except off Tamil Nadu on 29<sup>th</sup> September.

Entire Bay of Bengal during 26<sup>th</sup> to 29<sup>th</sup> September, over South & Central Bay of Bengal during 29<sup>th</sup> September to 01<sup>st</sup> October.

#### ii. Weather conditions and forecast over Delhi/NCR during 26<sup>th</sup> September to 29<sup>th</sup> September, 2025 (Annexure V)

For more details, kindly refer National Weather Bulletin:

[https://mausam.imd.gov.in/responsive/all\\_india\\_forecast\\_bulletin.php](https://mausam.imd.gov.in/responsive/all_india_forecast_bulletin.php)

For District wise warnings refer: <https://mausam.imd.gov.in/responsive/districtWiseWarningGIS.php>

For Fishermen warning refer <https://rsmcnewdelhi.imd.gov.in/fishermen-warning.php>

**Rainfall recorded (in cm) during past 24 hours till 0830 hours IST of today, the 26<sup>th</sup> September (≥ 7cm):**

**Tamil Nadu, Puducherry & Karaikal:** Thirparappu (dist Kanyakumari), Oothu (dist Tirunelveli) 18 Each; Sethiathope (dist Cuddalore), Nalumukku (dist Tirunelveli) 17 Each; Suralacode (dist Kanyakumari) 16; Chittar (dist Kanyakumari) 15; Kuzhithurai (dist Kanyakumari), Lower Kothaiyar ARG (dist Kanyakumari), Adayamadai (dist Kanyakumari) 14 Each; Perunchani Dam (dist Kanyakumari), Kakkachi (dist Tirunelveli) 13 Each; Puthan Dam (dist Kanyakumari) 12; Pechiparai (dist Kanyakumari) 11; Manjulai (dist Tirunelveli) 10; Kozhiporvilai (dist Kanyakumari), Mambzhathuraiyaru (dist Kanyakumari), Mullanginavillai (dist Kanyakumari) 9 Each; Thirupathisaram AWS (dist Kanyakumari), Sivalogam(chittar li) (dist Kanyakumari), Anaikedanku (dist Kanyakumari) 8 Each; Eraniel (dist Kanyakumari), Nagercoil (dist Kanyakumari), Bhuvanagiri (dist Cuddalore), Kalial (dist Kanyakumari), Mukkadal Dam (dist Kanyakumari) 7 Each;

**Kerala & Mahe:** Neyyattinkara (dist Thiruvananthapuram) 17; Trivandrum AP (dist Thiruvananthapuram) 15; Peermade To (dist Idukki), Lower Sholayar AWS (dist Thrissur) 14 Each; Thiruvananthapuram (dist Thiruvananthapuram) 13; Airport Chakka ARG (dist Thiruvananthapuram), Karumadi AWS (dist Alapuzha), Pirappancode AWS (dist Thiruvananthapuram) 11 Each; Kanjirappally (dist Kottayam) 10; Neryamangalam ARG (dist Ernakulam) 9; Myladumpara ARG (dist Idukki), Idukki (dist Idukki), Sengulam Dam AWS (dist Idukki), Udumbannoor AWS (dist Idukki), Vellathooval AWS (dist Idukki), Vadavathur AWS (dist Kottayam), Vaikkom AWS (dist Kottayam), Venkurinji AWS (dist Pathanamthitta), Ranni AWS (dist Pathanamthitta) 8 Each; Haripad (dist Alapuzha), Konni (dist Pathanamthitta), Kottayam (dist Kottayam), Nooranad AWS (dist Alapuzha), Pampadumpara AWS (dist Idukki), Ulanad AWS (dist Pathanamthitta), Thattathumala AWS (dist Thiruvananthapuram) 7 Each;

**Telangana:** Zaffergadh (dist Jangaon) 11; Nagarjunsagar (dist Nalgonda) 10; Vicarabad (dist Vikarabad), Hathanoora (dist Sangareddy), Kondapur (dist Sangareddy) 9 Each; Pargi (dist Vikarabad), Mominpet (dist Vikarabad), Nawabpet (dist Vikarabad), Tadwai Mlg (dist Mulugu), Miryalaguda (dist Nalgonda) 8 Each; Kaleswaram (dist J. Bhupalpally), Medak (dist Medak), Sangareddy (dist Sangareddy), Huzurabad (dist Karimnagar), Narsapur (dist Medak), Medak(ARG) (dist Medak), Atmakur M (dist Y. Bhuvanagiri), Devaruppal (dist Jangaon), Jammikunta (dist Karimnagar), Kandi AP (dist Sangareddy), Palakurthi (dist Jangaon) 7 Each;

**East Madhya Pradesh:** Bichhia (dist Mandla) 7;

**Vidarbha:** Joiti (dist Chandrapur) 7,

**Andaman & Nicobar Islands:** Port Blair (dist South Andaman) 7.

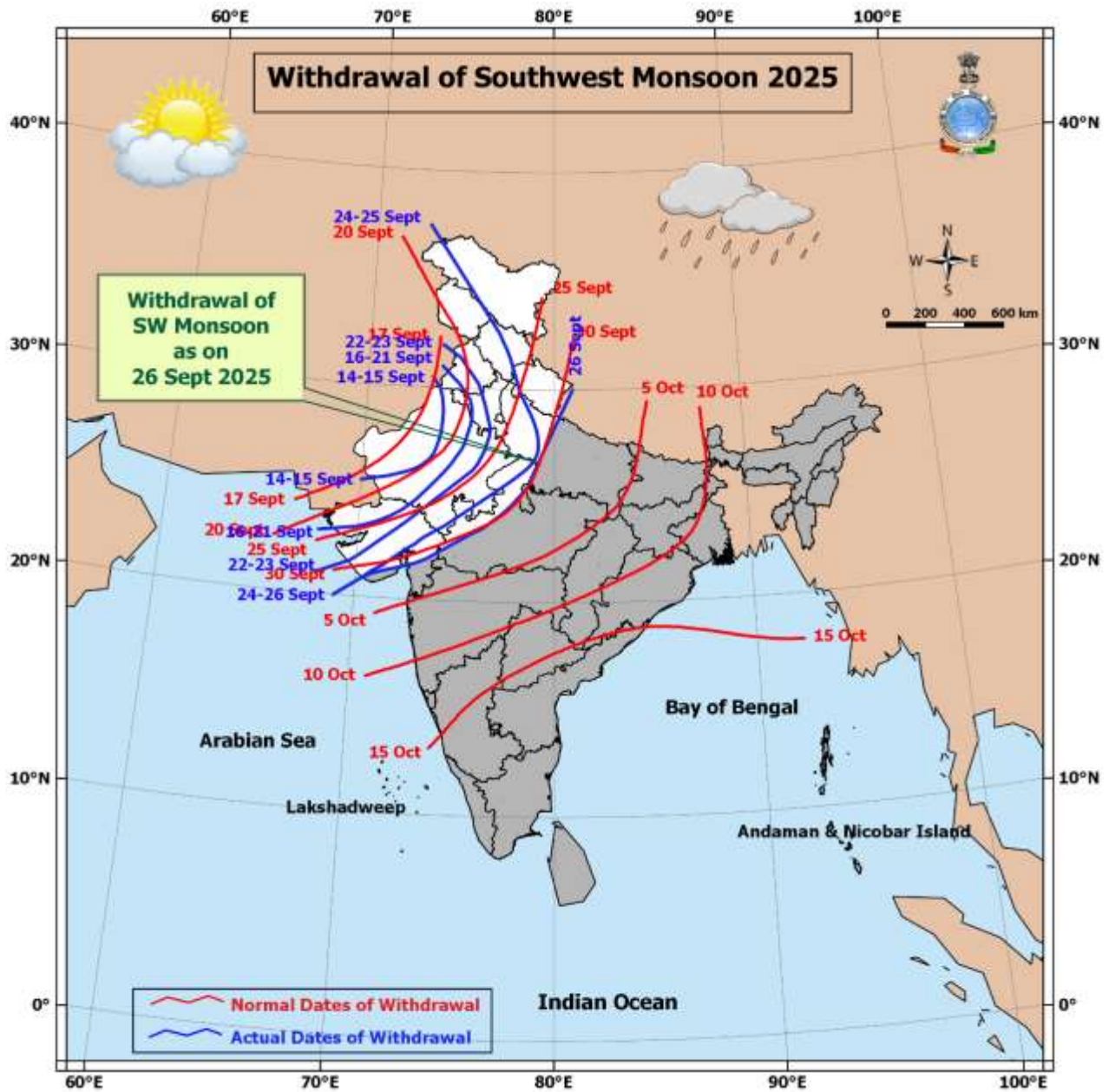
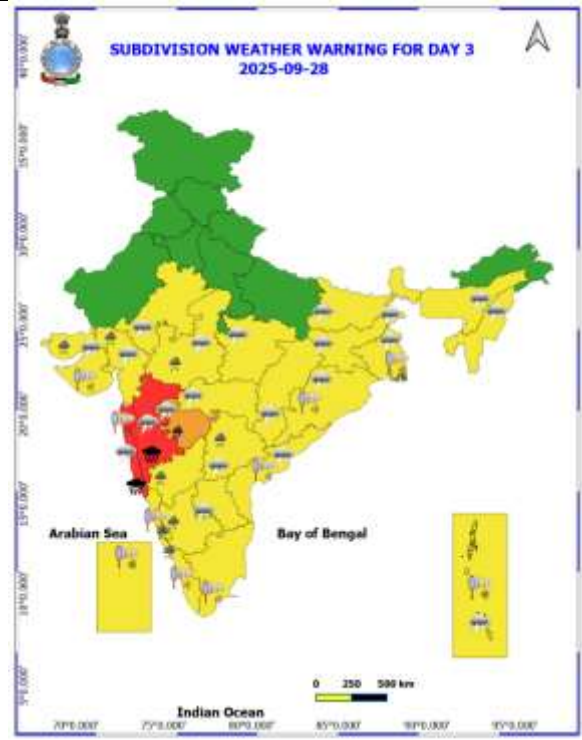
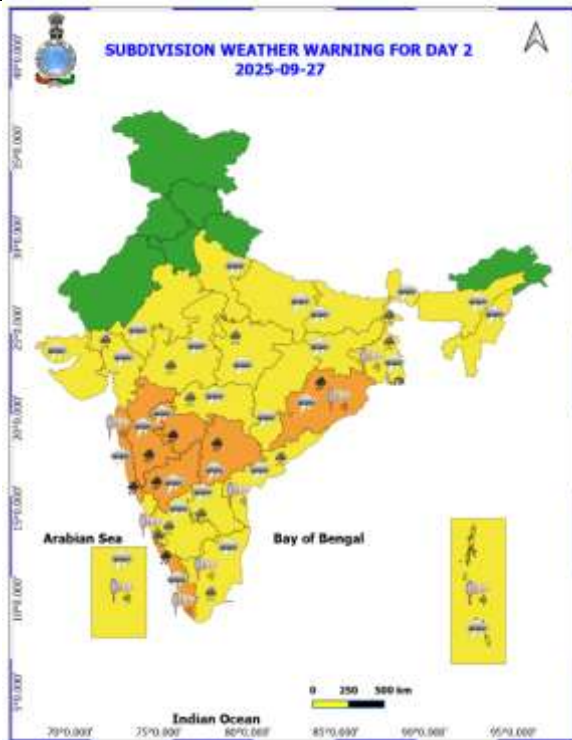
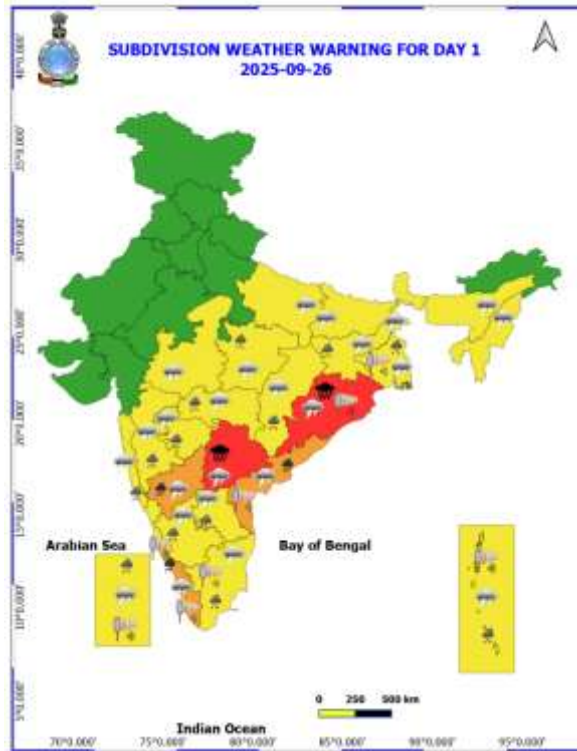
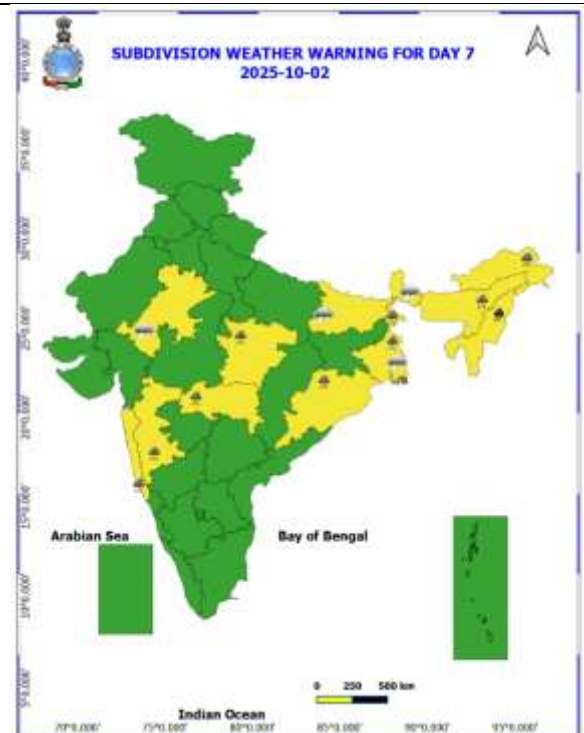
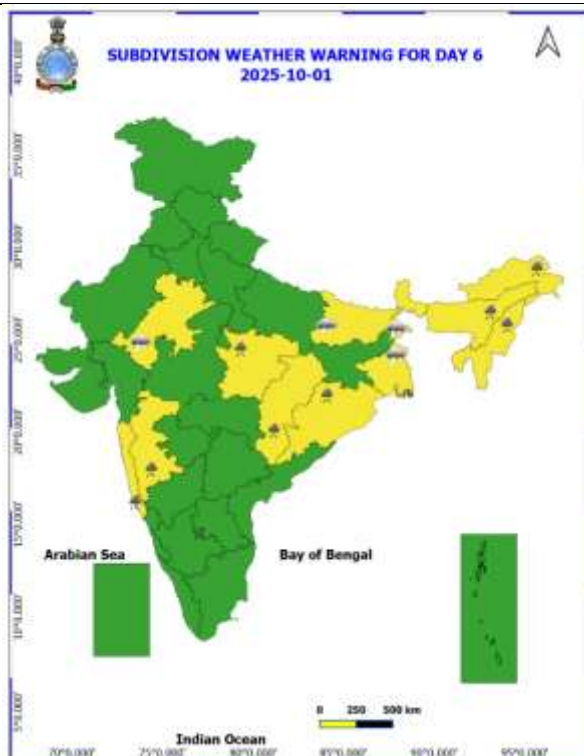
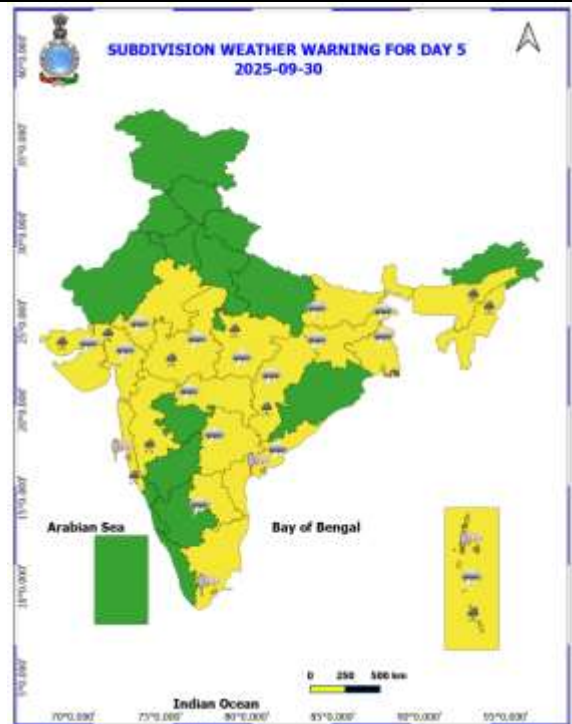
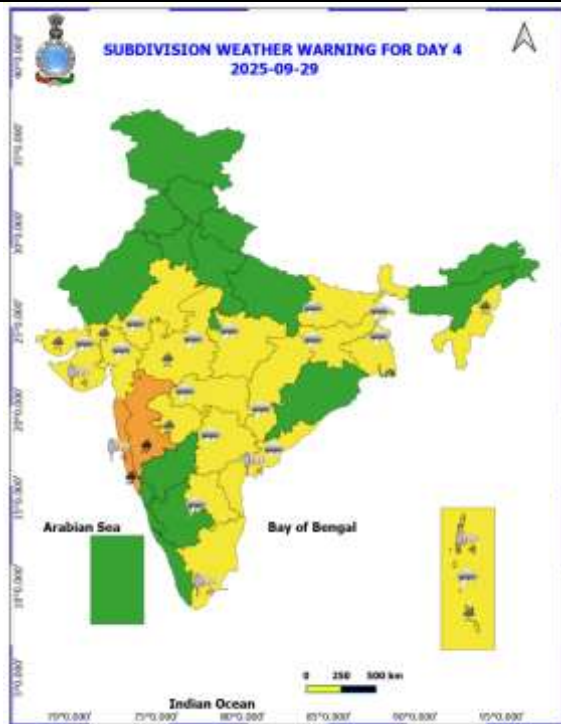


Table-1								
7 Days Rainfall Forecast								
S.No.	Subdivision	26- Sep	27- Sep	28- Sep	29- Sep	30- Sep	1- Oct	2- Oct
		Day 1	Day 2	Day 3	Day 4	Day 5	Day 6	Day 7
1	ANDAMAN & NICOBAR ISLANDS	WFS	WFS	WFS	WFS	WFS	FWS	FWS
2	ARUNACHAL PRADESH	ISOL	ISOL	ISOL	SCT	SCT	FWS	FWS
3	ASSAM & MEHGHALAYA	ISOL	SCT	SCT	ISOL	SCT	FWS	FWS
4	NAGALAND, MANIPUR, MIZORAM AND TRIPURA	ISOL	SCT	SCT	SCT	FWS	FWS	FWS
5	SUB HIMALAYAN WEST BENGAL & SIKKIM	SCT	SCT	SCT	SCT	SCT	FWS	WFS
6	GANGETIC WEST BENGAL	WFS	WFS	FWS	SCT	SCT	FWS	WFS
7	ODISHA	WFS	WFS	FWS	SCT	SCT	FWS	FWS
8	JHARKHAND	FWS	FWS	SCT	SCT	SCT	FWS	FWS
9	BIHAR	ISOL	ISOL	SCT	SCT	SCT	SCT	SCT
10	EAST UTTAR PRADESH	ISOL	SCT	ISOL	ISOL	ISOL	SCT	SCT
11	WEST UTTAR PRADESH	ISOL	ISOL	ISOL	ISOL	ISOL	ISOL	ISOL
12	UTTARAKHAND	ISOL	ISOL	ISOL	ISOL	ISOL	ISOL	ISOL
13	HARYANA, CHANDIGARH & DELHI	DRY	DRY	DRY	DRY	DRY	ISOL	DRY
14	PUNJAB	DRY	DRY	DRY	DRY	DRY	DRY	DRY
15	HIMACHAL PRADESH	DRY	DRY	DRY	DRY	DRY	DRY	DRY
16	JAMMU AND KASHMIR AND LADAKH	DRY	DRY	DRY	DRY	DRY	DRY	DRY
17	WEST RAJASTHAN	DRY	DRY	DRY	DRY	DRY	DRY	DRY
18	EAST RAJASTHAN	DRY	ISOL	ISOL	ISOL	ISOL	ISOL	ISOL
19	WEST MADHYA PRADESH	ISOL	FWS	FWS	WFS	WFS	WFS	WFS
20	EAST MADHYA PRADESH	SCT	FWS	FWS	FWS	WFS	WFS	WFS
21	GUJRAT REGION	SCT	SCT	FWS	FWS	FWS	FWS	SCT
22	SAURASHTRA & KUTCH	ISOL	ISOL	SCT	FWS	FWS	FWS	SCT
23	KONKAN & GOA	WFS	WFS	WFS	WFS	WFS	WFS	WFS
24	MADHYA MAHARASHTRA	FWS	WFS	WFS	WFS	WFS	WFS	WFS
25	MARATHWADA	FWS	WFS	WFS	FWS	SCT	SCT	SCT
26	VIDARBHA	FWS	WFS	FWS	SCT	FWS	FWS	FWS
27	CHHATTISGARH	FWS	SCT	SCT	SCT	FWS	FWS	FWS
28	COASTAL ANDHRA PRADESH	WFS	FWS	SCT	SCT	SCT	SCT	SCT
29	TELANGANA	WFS	WFS	FWS	FWS	SCT	SCT	SCT
30	RAYALASEEMA	WFS	FWS	SCT	ISOL	ISOL	ISOL	ISOL
31	TAMILNADU & PUDUCHERRY	ISOL	ISOL	ISOL	ISOL	ISOL	ISOL	ISOL
32	COSTAL KARNATAKA	WFS	WFS	WFS	WFS	WFS	WFS	WFS
33	NORTH INTERIOR KARNATAKA	WFS	WFS	FWS	SCT	SCT	SCT	SCT
34	SOUTH INTERIOR KARNATAKA	FWS	SCT	SCT	SCT	SCT	SCT	SCT
35	KERALA AND MAHE	WFS	WFS	WFS	WFS	FWS	FWS	FWS
36	LAKSHADWEEP	WFS	WFS	WFS	FWS	FWS	FWS	FWS

- As the lead period increases forecast accuracy decrease.





- Action may be taken based on ORANGE AND REDCOLOUR warnings.
- Vulnerable regions likely urban and hilly areas action may be initiated for heavy rainfall warning.
- As the lead period increases forecast accuracy decreases.

Detailed districtwise Multi Hazard weather warning for next five days available at  
<https://mausam.imd.gov.in/responsive/districtWiseWarningGIS.php>

## Weather forecast over Delhi/NCR during 26<sup>th</sup> to 29<sup>th</sup> September 2025

### Past Weather:

There has been no large change in the minimum and maximum temperatures over Delhi/NCR during the past 24 hours. The maximum and minimum temperatures over Delhi were around 34 to 36°C and 23 to 25°C respectively. The minimum and maximum temperatures were near normal. Mainly clear sky conditions with predominant surface wind from the northwest/west direction with wind speeds up to 18 kmph with gusty wind up to 30 kmph prevailed during the past 24 hours. Mainly clear sky conditions with a wind speed of less than 12 kmph from the west direction prevailed over the region in the forenoon today.

### Weather Forecast:

**26.09.2025:** Mainly clear sky. The maximum and minimum temperatures over Delhi are likely to be in the range of 34 to 36°C. The maximum temperature will be near normal. The predominant surface wind will likely to be from the northwest direction with a wind speed of up to 20-25 kmph during afternoon hours. The wind speed will decrease becoming less than 15 kmph from the northwest direction during the evening and night.

**27.09.2025:** Partly cloudy sky. The maximum and minimum temperatures over Delhi are likely to be in the range of 34 to 36°C and 24 to 26°C respectively. The minimum temperature will be near normal and the maximum temperature will be near normal. The predominant surface wind will likely to be from the northeast direction with a wind speed of up to 08-12 kmph during morning hours. The wind speed will gradually increase becoming less than 15 kmph from the northeast direction in the afternoon. The wind speed will decrease becoming less than 10 kmph from the northeast direction during the evening and night.

**28.09.2025:** Partly cloudy sky. The maximum and minimum temperatures over Delhi are likely to be in the range of 35 to 37°C and 25 to 27°C respectively. The minimum temperature will be above normal up to 1 – 2°C and the maximum temperature will be above normal up to 1 – 2°C. The predominant surface wind will likely to be from the northeast direction with a wind speed of up to 05-10 kmph during morning hours. The wind speed will gradually increase becoming less than 12 kmph from the northeast direction in the afternoon. The wind speed will increase becoming less than 15 kmph from the northeast direction during the evening and night.

**29.09.2025:** Partly cloudy sky. The maximum and minimum temperatures over Delhi are likely to be in the range of 33 to 35°C and 25 to 27°C respectively. The minimum temperature will be above normal up to 1 – 2°C and the maximum temperature will be near normal. The predominant surface wind will likely to be from the southeast direction with a wind speed of up to 10 - 15 kmph during morning hours. The wind speed will gradually increase becoming less than 18 kmph from the southeast direction in the afternoon. The wind speed will decrease becoming less than 12 kmph from the southeast direction during the evening and night.

### Impact & Action Suggested due to

- ❖ **Extremely heavy rainfall ( $\geq 21$  cm)** also likely at isolated places over Odisha and Telangana on 26<sup>th</sup>; Konkan & Goa and ghat areas of Madhya Maharashtra on 28<sup>th</sup> September.
- ❖ **Very heavy rainfall (12-20 cm)** at isolated places over Marathawada on 27<sup>th</sup> & 28<sup>th</sup>; Madhya Maharashtra, Konkan & Goa on 27<sup>th</sup> & 29<sup>th</sup>; Kerala, Telangana, North Interior Karnataka on 26<sup>th</sup> & 27<sup>th</sup>; Coastal Andhra Pradesh & Yanam on 26<sup>th</sup> September; Assam & Meghalaya and Mizoram on 02<sup>nd</sup> October.

### Impact Expected

- Water logging/ flooding in many parts of low lying area and river banks
- Localized and short term disruption to municipal services (water, electricity, etc.)
- Major disruption of traffic flow. Major roads/local trains affected.
- Possibility of danger to very old buildings and unmaintained structures, falling of trees etc
- Closure of roads crossing low water bridges.

### Action Suggested

- Traffic may be regulated effectively
- People in the affected area may restrict their movement

### Agromet advisories for likely impact of Heavy Rainfall

- In **Odisha**, make provision for draining out excess rain water from fields of rice, maize, finger millet, vegetables, ginger and turmeric in **Eastern Ghat High Land Zone** and **South Eastern Ghat Zone**; pulses, maize, groundnut, cotton and vegetables in **Western Undulating Zone**; rice, groundnut and vegetables in **North Eastern Ghat Zone** and pulses, maize, groundnut, vegetables and fruit orchards in **East and South Eastern Coastal Plain Zone**.
- In **Maharashtra**, keep the harvested produce of green gram and black gram at safer places and make provision to drain out excess rain water from fields of cotton, pigeon pea, soybean, maize, vegetables and fruit in **Madhya Maharashtra**. Make arrangements to drain out excess water from vegetable fields and fruit orchards in **Konkan** and pigeon pea, cotton, soybean, sorghum, maize and vegetable fields in **Vidarbha**. In **Marathwada**, undertake harvesting of sapota and custard apple and store in safe place. Provide adequate drainage facilities in fields of soybean, cotton, pigeon pea, vegetables and fruit orchards and keep the harvested produce of black gram at safer places.
- In **Telangana**, make provision to drain out excess rain water from fields of rice, maize, cotton, soybean, pigeon pea and turmeric in **Northern Telangana Zone** and rice, cotton, soybean, maize and pigeon pea in **Southern Telangana Zone**.
- In **Andhra Pradesh**, make arrangements to drain out excess water from fields of rice, maize, pigeon pea and cotton in **Krishna Godavari Zone**; rice, maize, cotton, pigeon pea, green gram, groundnut, sugarcane and vegetables in **North Coastal Zone** and rice, sugarcane, maize, finger millet, groundnut, ginger, turmeric, vegetables and fruit orchards in **High Altitude Tribal Zone**.
- In **North Interior Karnataka**, ensure proper drainage facilities in fields of sugarcane, pigeon pea, soybean, maize, vegetables and fruit orchards in **North Dry Zone** and cotton, pigeon pea, groundnut and vegetables in **North East Dry Zone**.

### Livestock / Fishery

- Keep the animals inside the shed during heavy rainfall and provide them balanced feed.
- Store feed and fodder in a safe place to prevent spoilage.
- Construct an outlet with proper netting around the ponds to drain out excess water, thereby preventing fish from escaping in case of overflow.

### Agromet advisories for likely impact of Thunderstorm / Gusty Winds / Squally Winds

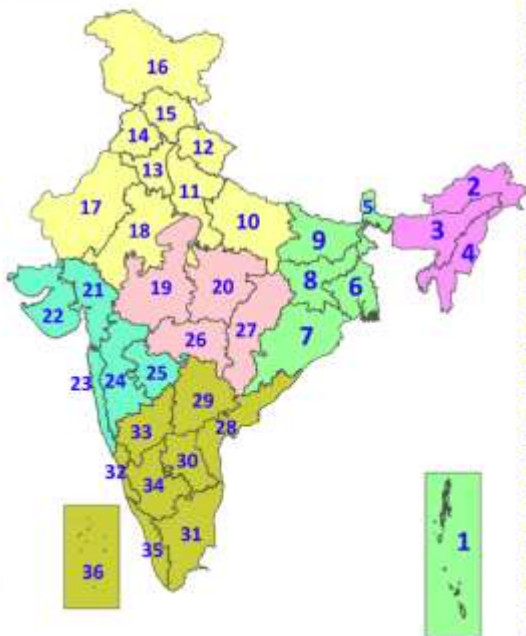
- Provide mechanical support to horticultural crops and staking or support to vegetables and young fruit plants / fruit-bearing plants to avoid lodging due to strong winds.

### Legends & abbreviations:

- ❖ **Heavy Rain:**64.5-115.5mm; **Very Heavy Rain:**115.6-204.4mm; **Extremely Heavy Rain:** >204.4mm.
- ❖ **Obsy:** Observatory; Automatic Weather Station; **ARG:** Automatic Rain Gauge; **dist:** District: **NH:** National Highway; **KVK:** Krishi Vigyan Kendra; **DVC:** Damodar Valley Corporation; **PTO:** Part Time Office, **Aero:** Aerodrome, **IAF:** Indian Air Force.
- ❖ **Region wise classification of meteorological Sub-Divisions:**
  - **Northwest India:** Western Himalayan Region (Jammu-Kashmir-Ladakh-Gilgit-Baltistan-Muzaffarabad, Himachal Pradesh and Uttarakhand); Punjab, Haryana-Chandigarh-Delhi; West Uttar Pradesh, East Uttar Pradesh, West Rajasthan and East Rajasthan.
  - **Central India:** West Madhya Pradesh, East Madhya Pradesh, Vidarbha and Chhattisgarh.
  - **East India:** Bihar, Jharkhand, Sub-Himalayan West Bengal & Sikkim; Gangetic West Bengal, Odisha and Andaman & Nicobar Islands.
  - **Northeast India:** Arunachal Pradesh, Assam & Meghalaya and Nagaland, Manipur, Mizoram & Tripura.
  - **West India:** Gujarat Region, Saurashtra & Kutch, Konkan & Goa, Madhya Maharashtra and Marathawada.
  - **South India:** Coastal Andhra Pradesh & Yanam, Telangana, Rayalaseema, Coastal Karnataka, North Interior Karnataka, South Interior Karnataka, Kerala & Mahe, Tamil Nadu, Puducherry & Karaikal and Lakshadweep.

## LEGENDS

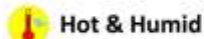
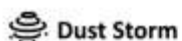
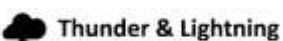
1. अंडमान और निकोबार द्वीपसमूह
2. अरुणाचल प्रदेश
3. असम और मेघालय
4. नागालैंड, मणिपुर, मिजोरम और त्रिपुरा
5. उप-हिमालयी पश्चिम बंगाल और सिक्किम
6. गंगीय पश्चिम बंगाल
7. ओडिशा
8. झारखंड
9. बिहार
10. पूर्वी उत्तर प्रदेश
11. पश्चिम उत्तर प्रदेश
12. उत्तराखंड
13. हरियाणा, चंडीगढ़ और दिल्ली
14. पंजाब
15. हिमाचल प्रदेश
16. जम्मू और कश्मीर और लद्दाख
17. पश्चिम राजस्थान
18. पूर्वी राजस्थान
19. पश्चिम मध्य प्रदेश
20. पूर्वी मध्य प्रदेश
21. गुजरात
22. सौराष्ट्र
23. कोंकण और गोवा
24. मध्य महाराष्ट्र
25. मराठवाड़ा
26. विदर्भ
27. छत्तीसगढ़
28. तटीय आंध्र प्रदेश और यनम
29. तेलंगाना
30. रायलसीमा
31. तमिलनाडु, पुडुचेरी और कराईकल
32. तटीय कर्नाटक
33. आंतरिक उत्तरी कर्नाटक
34. आंतरिक दक्षिणी कर्नाटक
35. केरल और माहे
36. लक्षद्वीप



1. Andaman & Nicobar Islands
2. Arunachal Pradesh
3. Assam & Meghalaya
4. Nagaland, Manipur, Mizoram & Tripura
5. Sub-Himalayan West Bengal & Sikkim
6. Gangetic West Bengal
7. Odisha
8. Jharkhand
9. Bihar
10. East Uttar Pradesh
11. West Uttar Pradesh
12. Uttarakhand
13. Haryana, Chandigarh & Delhi
14. Punjab
15. Himachal Pradesh
16. Jammu & Kashmir and Ladakh
17. West Rajasthan
18. East Rajasthan
19. West Madhya Pradesh
20. East Madhya Pradesh
21. Gujarat
22. Saurashtra
23. Konkan & Goa
24. Madhya Maharashtra
25. Marathwada
26. Vidarbha
27. Chhattisgarh
28. Coastal Andhra Pradesh & Yanam
29. Telangana
30. Rayalaseema
31. Tamilnadu, Puducherry & Karaikal
32. Coastal Karnataka
33. North Interior Karnataka
34. South Interior Karnataka
35. Kerala & Mahe
36. Lakshadweep

## SPATIAL DISTRIBUTION (% of Stations reporting)

% Stations	Category	% Stations	Category
76-100	Widespread (WS/Most Places)	26-50	Scattered (SCT/A Few Places)
51-75	Fairly Widespread (FWS/Many Places)	1-25	Isolated (ISOL)



### COLOUR CODED WARNING

No Warning (No Action)
Watch (Be Aware)
Alert (Be Prepared To Take Action)
Warning (Take Action)

### Probabilistic Forecast

Terms	Probability of Occurrence (%)
Unlikely	< 25
Likely	25 - 50
Very Likely	50 - 75
Most Likely	> 75

### DEFINITION/CRITERIA

#### Rain/ Snow \*

Heavy: 64.5 to 115.5 mm/cm \*  
Very Heavy: 115.6 to 204.4 mm/cm \*  
Extremely Heavy: > 204.4 mm/cm \*

#### Heat Wave

When maximum temperature of a station reaches  $\geq 40^{\circ}\text{C}$  for plains and  $\geq 30^{\circ}\text{C}$  for hilly regions  
(a) Based on Departure from normal

Heat Wave: Maximum Temperature Departure from normal  $4.5^{\circ}\text{C}$  to  $6.4^{\circ}\text{C}$ .

Severe Heat Wave: Maximum Temperature Departure from normal  $\geq 6.5^{\circ}\text{C}$

(b). Based on Actual maximum temperature

Heat Wave: When actual maximum temperature  $\geq 45^{\circ}\text{C}$ .

Severe Heat Wave: When actual maximum temperature  $\geq 47^{\circ}\text{C}$ .

(c). Criteria for heat wave for coastal stations

When maximum temperature departure is  $> 4.5^{\circ}\text{C}$  from normal. Heat Wave may be described provided maximum temperature  $\geq 37^{\circ}\text{C}$ .

#### Warm Night

When maximum temperature remains  $40^{\circ}\text{C}$

Warm Night: When minimum temperature departure  $4.5^{\circ}\text{C}$  to  $6.4^{\circ}\text{C}$ .

Severe Warm Night: When minimum temperature departure  $> 6.4^{\circ}\text{C}$ .

#### Cold Wave

When minimum temperature of a station  $\leq 10^{\circ}\text{C}$  for plains and  $\leq 0^{\circ}\text{C}$  for hilly regions.

(a). Based on departure

Cold Wave: Minimum Temperature Departure from normal  $-4.5^{\circ}\text{C}$  to  $-6.4^{\circ}\text{C}$ .

Severe Cold Wave: Minimum Temperature Departure from normal  $\leq -6.5^{\circ}\text{C}$

(b) Based on actual Minimum Temperature (for Plains only)

Cold Wave: When Minimum Temperature is  $\leq 4.0^{\circ}\text{C}$

Severe Cold Wave: When Minimum Temperature is  $\leq 2.0^{\circ}\text{C}$

(c) For Coastal Stations

When Minimum Temperature departure is  $\leq -4.5^{\circ}\text{C}$  & actual Minimum Temperature is  $\leq 15^{\circ}\text{C}$

#### Cold Day

When minimum temperature of a station  $\leq 10^{\circ}\text{C}$  for plains and  $\leq 0^{\circ}\text{C}$  for hilly regions

Based on departure

Cold Day: Maximum Temperature Departure from normal  $-4.5^{\circ}\text{C}$  to  $-6.4^{\circ}\text{C}$ .

Severe Cold Day: Maximum Temperature Departure from normal  $\leq -6.5^{\circ}\text{C}$

#### Fog

Phenomenon of small droplets suspended in air and the horizontal visibility  $< 1\text{km}$

Moderate Fog: When the visibility between 500-200 metres

Dense Fog: when the visibility between 50- 200 metres

Very Dense Fog: when the visibility  $< 50$  metres

#### Thunderstorm

Sudden electrical discharges manifested by a flash of light (Lightning) and a sharp rumbling sound (thunder)

#### Dust/Sand Storm

An ensemble of particles of dust or sand energetically lifted to great heights by a strong and turbulent wind.

#### Frost

Ice deposits on ground

Air temperature  $\leq 4^{\circ}\text{C}$  ( over Plains)

#### Squall

A strong wind that rises suddenly, lasts for atleast 1 minute.

Moderate: Wind speed 52-61 kmph

Severe: Wind speed 62-67 kmph

Very Severe: Wind speed  $> 67$  kmph

#### Sea State

Effect of various waves in the sea over specific area

Rough to very rough: Wind speed 41-62 kmph (22-33 knots) & Wave height 2.5-6 metre

High to very high: Wind speed 63-117 kmph ( 34-63 knots) & Wave height 6-14 metre

Phenomenal: Wind speed  $> 117$  kmph ( $> 63$  knots) & Wave height  $> 14$  metre

#### Cyclone

Cyclonic Storm: Wind speed 62-87 kmph (34-47 knots)

Severe Cyclonic Storm: Wind speed 88-117 kmph (48-63 knots)

Very Severe Cyclonic Storm: Wind speed 118-165 kmph (64 - 89 knots)

Extremely Severe Cyclonic Storm: Wind speed 166-220 kmph (90 -119 knots)

Super Cyclone Storm: Wind speed  $> 220$  kmph ( $> 119$  knots)

\* Red colour warning does not mean "Red Alert", Red colour warning means "Take Action".

Forecast and Warning for any day is valid from 0830 hours IST of day till 0830 hours IST of next day.

For more details, kindly visit <https://mausam.imd.gov.in> or contact: 011-2434-4599

(Service to the Nation since 1875)

**Hot and Humid:** When maximum temperatures remain  $3^{\circ}\text{C}$  above normal along with the above normal relative humidity.