



Government of India
Ministry of Earth Sciences
India Meteorological Department



Press Release

Date: 27th September, 2025

Time of Issue: 1400 hours IST

Subject: i) The Depression crossed south Odisha coast close to Gopalpur during morning hours of today, and is currently over south interior Odisha and is likely to move westward across South Odisha & south Chhattisgarh, and weaken into a Well-Marked Low-Pressure area in next 24 hours.

ii) Enhanced rainfall activity with heavy to very heavy rainfall likely over Maharashtra state during 27th-29th; over Gujarat State during 28th-30th September with possibility of isolated extremely heavy rainfall over north Konkan & north Madhya Maharashtra on 28th & 29th; south Gujarat Region on 28th and Saurashtra & Kutch on 29th September.

Realised weather during past 24 hours till 0830 hours IST of today, the 27th September, 2025:

- ❖ **Heavy to very heavy rainfall (7-20 cm)** has been recorded at isolated places over Assam, Jharkhand, Marathawada, Odisha, Telangana and Rayalaseema.
- ❖ **Heavy rainfall (7-11 cm)** has been recorded at isolated places over Chhattisgarh, Vidarbha, Gangetic West Bengal, Konkan, Madhya Maharashtra, Coastal Andhra Pradesh, North Interior Karnataka, Kerala and Tamil Nadu.

For more details of realised weather, kindly refer [Annexure I](#).

Withdrawal of southwest Monsoon:

- ❖ The line of withdrawal of southwest monsoon continues to pass through 20°N/ 69°E, Veraval, Bharuch, Ujjain, Jhansi, Shahjahanpur and 30°N/81°E. ([Annexure II](#))
- ❖ Conditions are not favourable for further withdrawal of southwest monsoon during next 7 days.

i. Weather Systems, Forecast and Warnings (refer to Annexure III & IV):

- ❖ The well marked low pressure area over northwest and adjoining central Bay of Bengal moved west-northwestwards, and concentrated into a **depression**, laid cantered at 1730 hrs IST of yesterday, the 26th September over northwest and adjoining westcentral Bay of Bengal off South Odisha- North Andhra Pradesh coasts. It moved nearly westwards and crossed south Odisha coast near latitude 19.3°N & longitude 85.0°E close to Gopalpur around 0430hrs IST of today, the 27th September, 2025. It further moved westwards and laid centred at 0830 hrs IST of today, over south interior Odisha, near latitude 19.3°N and longitude 84.2°E, about 50 km east-northeast of Gunupur (Odisha), 70 km west of Gopalpur (Odisha), 130 km south of Phulbani (Odisha), 130 km east-southeast of Bhawanipatna (Odisha) and 230 km east of Jagdalpur (Chhattisgarh). It is very likely to continue to move nearly westwards across south Odisha & south Chhattisgarh and weaken gradually into a well-marked low-pressure area during next 24 hours.
- ❖ A **trough** runs from the above depression over south interior Odisha to Goa in lower & middle tropospheric levels.
- ❖ An upper air **cyclonic circulation** likely to emerge into north Andaman Sea on 30th September. Under its influence a low pressure area likely to form over north & adjoining central Bay of Bengal around 01st October 2025.

Under the influence of these systems, the following weather is likely:

East & Central India:

- ❖ Light to moderate rain/thunderstorm at most/many places with isolated **heavy rainfall** likely southwest Madhya Pradesh, Vidarbha on 27th, 28th September, 02nd, 03rd October; southeast Madhya Pradesh, West Bengal & Sikkim on 27th September, 02nd & 03rd October; Chhattisgarh on 27th September & during 30th September-03rd October; Andaman & Nicobar Islands during 27th -30th September; Bihar & Jharkhand on 02nd & 03rd October; Odisha on 27th September & during 01st-03rd October with **very heavy rainfall over southwest Madhya Pradesh and Vidarbha on 27th September.**
- ❖ Thunderstorm & gusty winds (speed reaching 30-50 kmph) very likely over Andaman & Nicobar Islands, Jharkhand & Odisha during 27th September-01st October; West Bengal & Sikkim, Bihar during next 7 days.
- ❖ Strong surface winds (speed reaching 30-40 kmph) very likely over Bihar on 27th September.

West India:

- ❖ Light to moderate rain/thunderstorm at many/some places with **isolated heavy rainfall** likely over Konkan & Goa, Madhya Maharashtra during 27th September-03rd October; Marathwada during 27th-29th September; Saurashtra & Kutch during 28th September-01st October; Gujarat Region during 27th-30th September with **very heavy rainfall over Marathwada on 27th & 28th; north Konkan, north Madhya Maharashtra on 27th; Saurashtra & Kutch on 30th; south Gujarat Region on 29th September with isolated Extremely heavy rainfall over north Konkan and Ghat areas of Madhya Maharashtra on 28th & 29th; south Gujarat Region on 28th; Saurashtra & Kutch on 29th September.**

Northeast India:

- ❖ Light/moderate rain/thunderstorm at some/isolated places with isolated **heavy rainfall** likely over Assam & Meghalaya on 27th, 28th September & during 30th September-03rd October; Nagaland, Manipur, Mizoram & Tripura during 28th September-03rd October; Arunachal Pradesh during 01st-03rd October with **very heavy rainfall over Assam & Meghalaya and Nagaland, Manipur, Mizoram & Tripura on 02nd & 03rd October.**

South Peninsular India:

- ❖ Light to moderate rain/thunderstorm at many/some places with isolated **heavy rainfall** likely over Tamil Nadu, Coastal Andhra Pradesh & Yanam, Rayalaseema & South Interior Karnataka on 27th; Kerala & Mahe, Telangana & North Interior Karnataka on 27th & 28th September; Coastal Karnataka on 27th, 28th September & during 01st-03rd October with **very heavy rainfall over Kerala & Mahe, Telangana & North Interior Karnataka on 27th September.**
- ❖ Strong surface winds (speed reaching 40-50 kmph) very likely over Coastal Andhra Pradesh & Yanam, Rayalaseema during next 5 days.
- ❖ Strong surface winds (speed reaching 30-40 kmph) very likely over Tamil Nadu on 27th and Kerala & Mahe on 27th & 28th September.

Northwest India:

- ❖ Thunderstorm with lightning very likely over Uttar Pradesh on 27th & 28th September and East Rajasthan during next 7 days.

Fishermen warnings:

Fishermen are advised not to venture into the following areas during 27th September to 02nd October:

Arabian Sea:

- Along and off Konkan & Goa and adjoining sea areas during 27th to 30th September, Karnataka, Kerala, Lakshadweep area during 27th to 29th September and south Gujarat during 27th to 29th September and entire Gujarat coasts on 29th September to 02nd October; some parts of southwest adjoining westcentral Arabian Sea, along and off Somalia coast during 27th September to 02nd October, some parts of eastcentral adjoining northeast Arabian Sea, Lakshadweep area during 27th September to 02nd October.

Bay of Bengal:

- Along and off West Bengal, Bangladesh, Myanmar on 27th September; along and off Odisha coast on 27th to 28th September; Andaman Sea, Andhra Pradesh, Tamil Nadu, Sri Lanka coasts, Gulf of Mannar & adjoining Comorin area during 27th September to 02nd October except off Tamil Nadu on 29th September; entire Bay of Bengal during 27th to 29th September & 01st October, over South & Central Bay of Bengal during 29th September to 01st October.

ii. Weather conditions and forecast over Delhi/NCR during 27th September to 30th September, 2025 (Annexure V)

For more details, kindly refer National Weather Bulletin:

https://mausam.imd.gov.in/responsive/all_india_forecast_bulletin.php

For District wise warnings refer: <https://mausam.imd.gov.in/responsive/districtWiseWarningGIS.php>

For Fishermen warning refer <https://rsmcnewdelhi.imd.gov.in/fishermen-warning.php>

ANNEXURE I

Rainfall recorded (in cm) during past 24 hours till 0830 hours IST of today, the 27th September (≥ 7 cm):

- ❖ **Marathwada:** Ahmedpur (dist Latur) 17, Palam (dist Parbhani) 15, Loha (dist Nanded) 14, Chakur (dist Latur) 11, Gangakhed (dist Parbhani) 11, Naigaon Khairgaon (dist Nanded) 10, Aundha Nagnath (dist Hingoli) 10, Nilanga (dist Latur) 9, Beed (dist Beed) 9, Nanded - Imd Parttime (dist Nanded) 9, Jalkot (dist Latur) 9, Kandhar (dist Nanded) 8, Renapur (dist Latur) 8, Ardhapur (dist Nanded) 8, Shirur Anantpal (dist Latur) 8, Vasmat (dist Hingoli) 7, Udgir - Imd Parttime (dist Latur) 7, Washi (dist Dharashiv) 7, Kaij (dist Beed) 7, Dharur (dist Beed) 7, Patoda (dist Beed) 7;
- ❖ **Rayalaseema:** Aspari (dist Kurnool) 13, Yemmiganur (dist Kurnool) 10, Dhone (dist Nandyal) 9, Alur (dist Kurnool) 8, Gudur (dist Kurnool) 8, Banaganapalle (dist Nandyal) 7, Nandyal (dist Nandyal) 7, C Belagal (dist Kurnool) 7;
- ❖ **Jharkhand:** Sonua (dist West Singhbhum) 12;
- ❖ **Telangana:** Nawabpet (dist Vikarabad) 12, Ghattu (dist Jogulamba Gadwal) 12, Kataram (dist J. Bhupalpally) 12, Mominpet (dist Vikarabad) 11, Aiza (dist Jogulamba Gadwal) 11, Chinna Chinta Kunt (dist Mahabubnagar) 11, Kondapur (dist Sangareddy) 11, Vicarabad (dist Vikarabad) 10, Maldakal (dist Jogulamba Gadwal) 10, Gandeed (dist Mahabubnagar) 10, Kondurg (dist Rangareddy) 9, Venkatapuram (dist Mulugu) 9, Pargi (dist Vikarabad) 8, Waddepalli (dist Jogulamba Gadwal) 8, Hanwada (dist Mahabubnagar) 8, Atmakur Wnp (dist Wanaparthy) 8, Itikyal (dist Jogulamba Gadwal) 8, Aswapuram (dist B. Kothagudem) 8, Peddapalle (dist Peddapalle) 8, Peddemul (dist Vikarabad) 7, Bhadrachalam (dist B. Kothagudem) 7, Narva (dist Narayanpet) 7, Burgampadu (dist B. Kothagudem) 7, Marpalle (dist Vikarabad) 7, Banswada (dist Kamareddy) 7, Chennur (dist Mancherla) 7, Shadnagar (arg) (dist Rangareddy) 7, Horti Univ Mojerla(a) (dist Wanaparthy) 7;
- ❖ **Odisha:** Salebhatta (dist Bolangir) 12, Aska (dist Ganjam) 9, Umarmkote (dist Nawarangpur) 9, Patnagarh (dist Bolangir) 9, Jhorigam (dist Nawarangpur) 9, Turekela (dist Bolangir) 8, Titlagarh (dist Bolangir) 8, Dharakote (dist Ganjam) 8, Danagadi (dist Jajpur) 8, Agalpur (dist Bolangir) 8, Gaisilet (dist Bargarh) 7, Koksara (dist Kalahandi) 7, Astaranga (dist Puri) 7, Nawana (dist Mayurbhanj) 7, Mathili (dist Malkangiri) 7, Paikmal (dist Bargarh) 7, Bijepur (dist Bargarh) 7, Mahanga (dist Cuttack) 7, Betanati (dist Mayurbhanj) 7, Chandrapur (dist Rayagada) 7, Bhawanipatna (dist Kalahandi) 7, Nawapara (dist Nawapara) 7, Barpalli (dist Bargarh) 7, Ullunda (dist Sonapur) 7, Derabis (dist Kendrapara) 7;
- ❖ **Assam:** Chauldhowaghat (dist Lakhimpur) 12, Chouldhuwaghat Arg (dist Lakhimpur) 10;
- ❖ **Chhattisgarh:** Marri Bangla Deori (dist Balod) 11, Rajnandgaon (dist Rajnandgaon) 8, Bade Bacheli (dist Dantewada) 8, Chhotedongar (dist Narayanpur) 8, Dondilohara (dist Balod) 7, Durgkondal (dist Kanker) 7, Ambagarh Chowki (dist Mohala Manpur Chowki) 7, Arjunda (dist Balod) 7, Tongpaal (dist Sukma) 7;
- ❖ **Madhya Maharashtra:** Jeur - Imd Parttime (dist Sholapur) 11, Kavathe Mahakal (dist Sangli) 7, Pandharpur (dist Sholapur) 7, Miraj (dist Sangli) 7, Sangli - Imd Obsy (dist Sangli) 7;
- ❖ **Konkan:** Mhasla (dist Raigad) 10, Savarde-arg (dist Ratnagiri) 7;
- ❖ **North Interior Karnataka:** Balaganur (dist Raichur) 10, Manvi (dist Raichur) 9, Jalahalli (dist Raichur) 9, Lokapur (dist Bagalkote) 9, Hayyal B (dist Yadgir) 9, Chikodi (dist Belagavi) 9, Mahalingapur (dist Bagalkote) 8, Kembhavi (dist Yadgir) 8, Bailhongal (dist Belagavi) 8, Muddebihal (dist Vijayapura) 8, Kalaburgi Obsy (dist Kalaburgi) 8, Gokak (dist Belagavi) 8, Mudgal (dist Raichur) 8, Kittur (dist Belagavi) 8, Shorapur (dist Yadgir) 8, Kakkeri (dist Yadgir) 7, Gabbur (dist Raichur) 7, Maski (dist Raichur) 7, Sedam (dist Kalaburgi) 7, Kaladgi (dist Bagalkote) 7, Chittapur (dist Kalaburgi) 7, Jewargi (dist Kalaburgi) 7, Raddewadgi Arg (dist Kalaburgi) 7, Belagavi Ap Obsy (dist Belagavi) 7, Hukkeri (dist Belagavi) 7, Aurad (dist Bidar) 7;
- ❖ **Vidarbha:** Korchi (dist Gadchiroli) 9, Kurkheda (dist Gadchiroli) 7, Deori (dist Gondia) 7;
- ❖ **Coastal Andhra Pradesh:** Kunavaram (dist Alluri Sitharamaraju) 8;
- ❖ **Tamil Nadu:** Perunchani Dam (dist Kanyakumari), Puthan Dam (dist Kanyakumari) 8 each, Thirparappu (dist Kanyakumari) 7;

- ❖ Kerala: Peermade (dist Idukki) 7;
- ❖ Gangetic West Bengal: Purihansa (dist Purulia) 7.

Annexure II

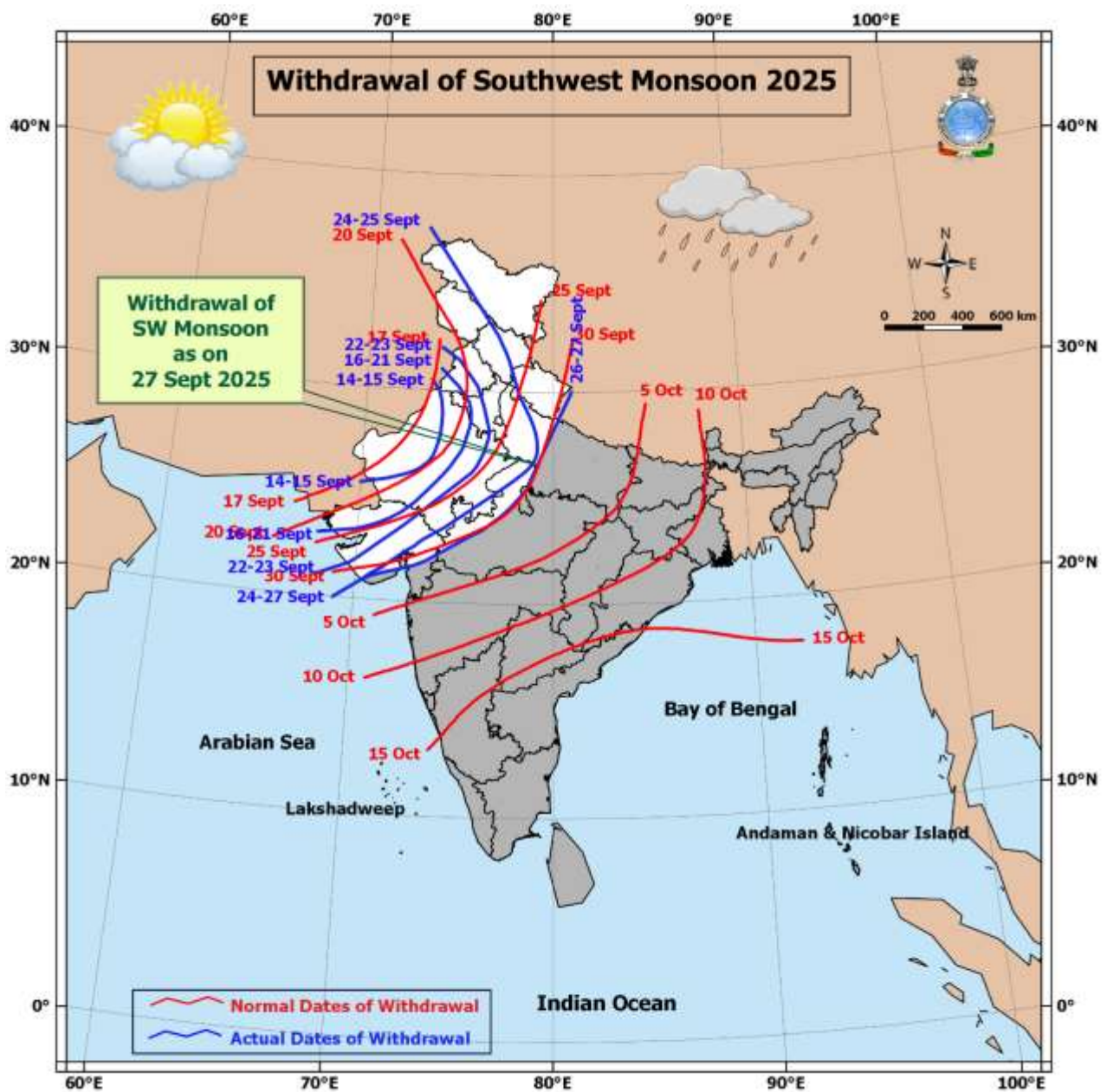
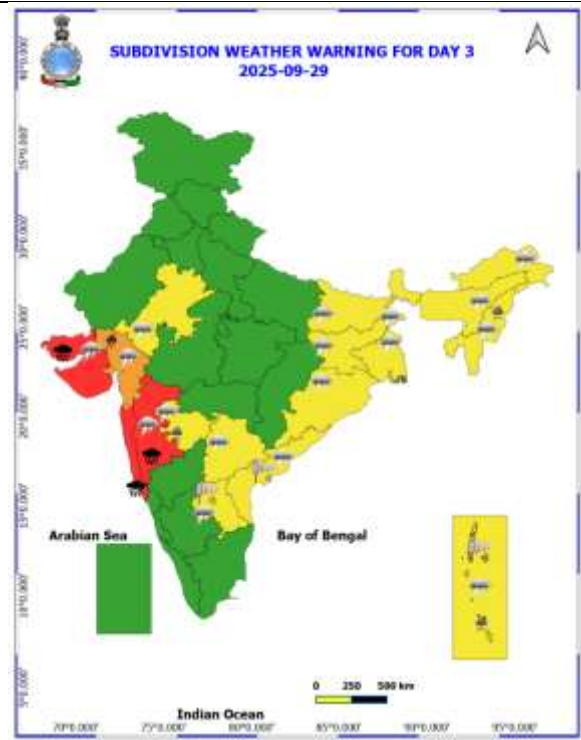
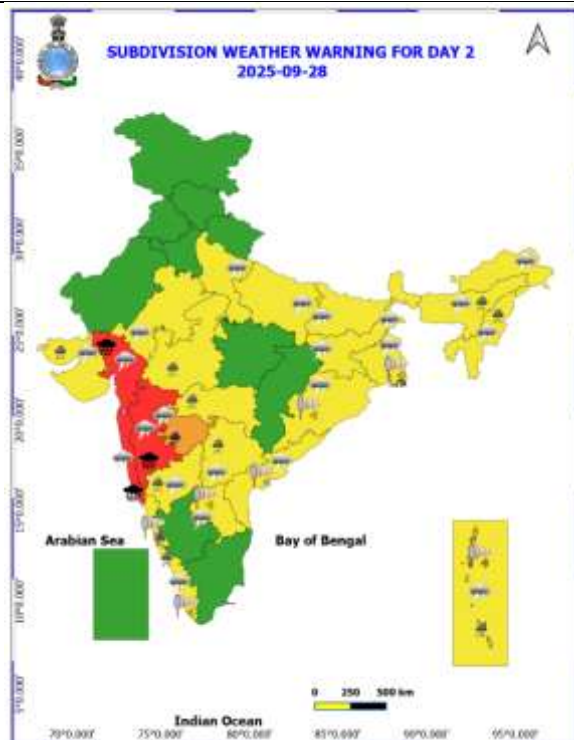
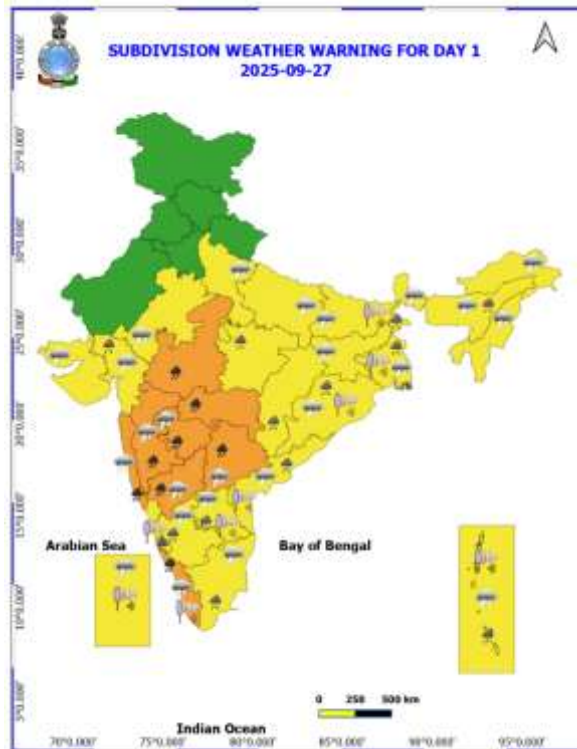
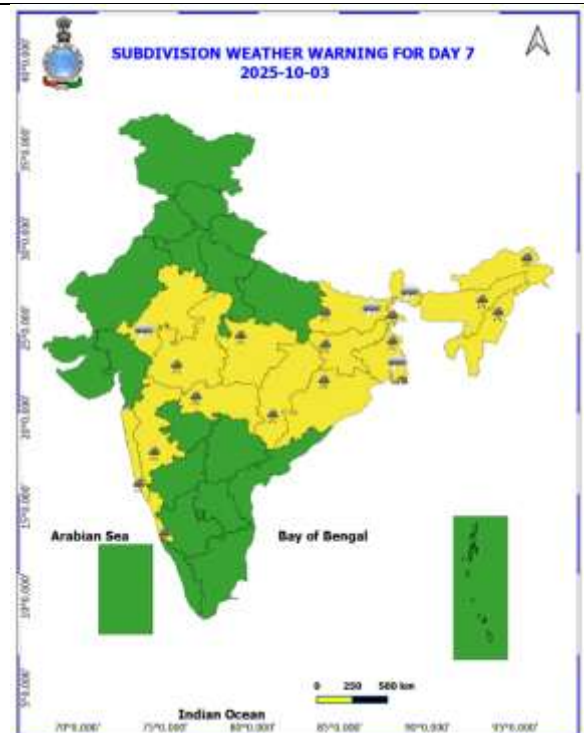
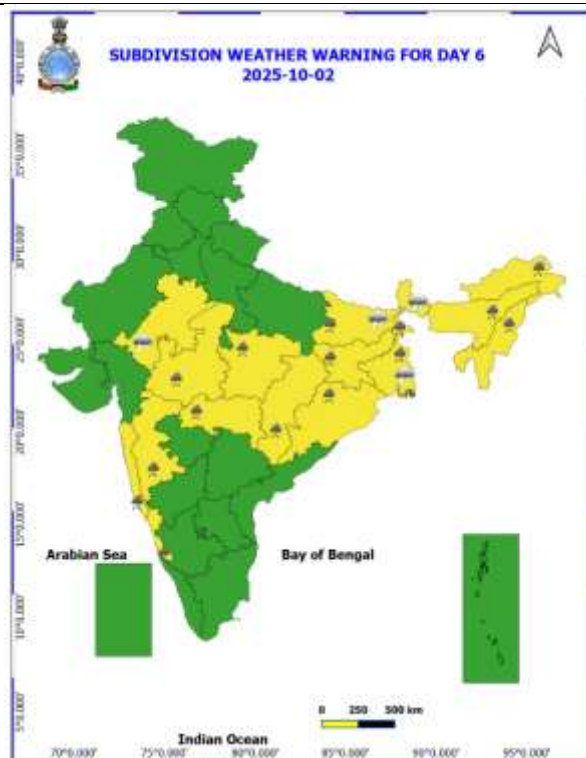
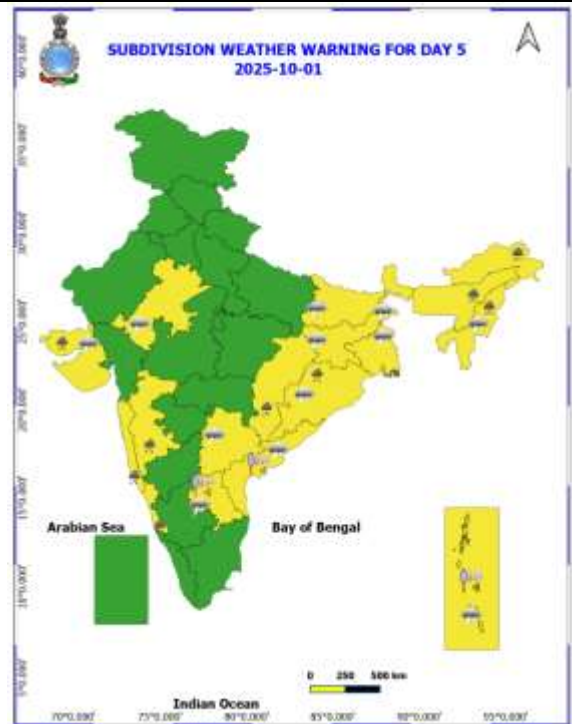
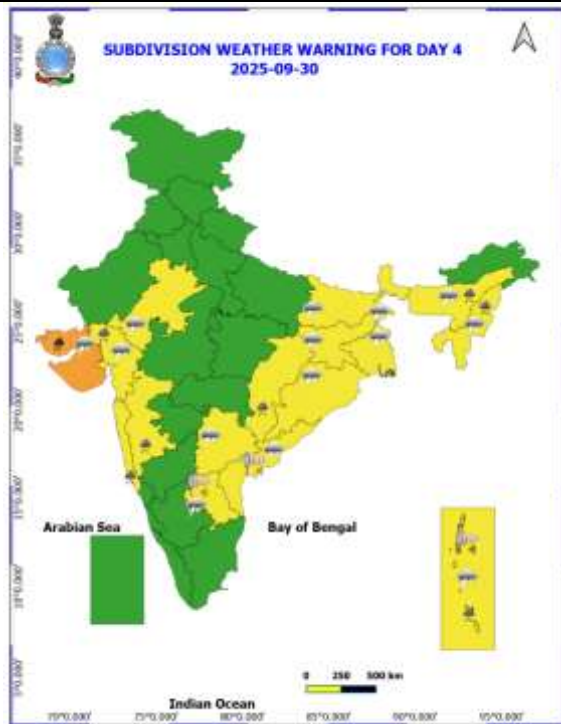


Table-1								
7 Days Rainfall Forecast								
S.No.	Subdivision	27- Sep	28- Sep	29- Sep	30- Sep	1- Oct	2- Oct	3- Oct
		Day 1	Day 2	Day 3	Day 4	Day 5	Day 6	Day 7
1	ANDAMAN & NICOBAR ISLANDS	WFS	WFS	WFS	WFS	WFS	FWS	SCT
2	ARUNACHAL PRADESH	ISOL	ISOL	SCT	SCT	FWS	FWS	FWS
3	ASSAM & MEHGHALAYA	SCT	SCT	SCT	FWS	FWS	FWS	FWS
4	NAGALAND, MANIPUR, MIZORAM AND TRIPURA	FWS	FWS	SCT	FWS	FWS	FWS	SCT
5	SUB HIMALAYAN WEST BENGAL & SIKKIM	SCT	SCT	SCT	SCT	FWS	WFS	WFS
6	GANGETIC WEST BENGAL	FWS	FWS	SCT	FWS	FWS	WFS	WFS
7	ODISHA	FWS	SCT	SCT	SCT	FWS	FWS	FWS
8	JHARKHAND	FWS	SCT	SCT	SCT	FWS	FWS	FWS
9	BIHAR	SCT	ISOL	SCT	SCT	SCT	FWS	FWS
10	EAST UTTAR PRADESH	ISOL	ISOL	ISOL	SCT	SCT	SCT	ISOL
11	WEST UTTAR PRADESH	ISOL	ISOL	ISOL	ISOL	ISOL	ISOL	ISOL
12	UTTARAKHAND	ISOL	ISOL	ISOL	ISOL	ISOL	ISOL	ISOL
13	HARYANA, CHANDIGARH & DELHI	DRY	DRY	DRY	DRY	DRY	DRY	DRY
14	PUNJAB	DRY	DRY	DRY	DRY	DRY	DRY	DRY
15	HIMACHAL PRADESH	DRY	DRY	DRY	DRY	DRY	DRY	DRY
16	JAMMU AND KASHMIR AND LADAKH	DRY	DRY	DRY	DRY	DRY	DRY	DRY
17	WEST RAJASTHAN	DRY	DRY	DRY	DRY	DRY	DRY	DRY
18	EAST RAJASTHAN	ISOL	ISOL	ISOL	ISOL	ISOL	ISOL	ISOL
19	WEST MADHYA PRADESH	FWS	WFS	FWS	FWS	FWS	FWS	FWS
20	EAST MADHYA PRADESH	WFS	FWS	FWS	FWS	FWS	FWS	FWS
21	GUJRAT REGION	SCT	WFS	WFS	FWS	FWS	SCT	SCT
22	SAURASHTRA & KUTCH	SCT	FWS	WFS	WFS	FWS	SCT	SCT
23	KONKAN & GOA	WFS	WFS	WFS	WFS	WFS	WFS	WFS
24	MADHYA MAHARASHTRA	FWS	WFS	WFS	FWS	FWS	SCT	SCT
25	MARATHWADA	WFS	FWS	FWS	SCT	SCT	FWS	FWS
26	VIDARBHA	WFS	FWS	SCT	FWS	FWS	FWS	WFS
27	CHHATTISGARH	FWS	SCT	FWS	FWS	FWS	FWS	FWS
28	COASTAL ANDHRA PRADESH	FWS	SCT	SCT	SCT	SCT	SCT	SCT
29	TELANGANA	WFS	FWS	FWS	SCT	SCT	SCT	SCT
30	RAYALASEEMA	FWS	SCT	ISOL	ISOL	ISOL	ISOL	ISOL
31	TAMILNADU & PUDUCHERRY	ISOL	ISOL	ISOL	ISOL	ISOL	ISOL	ISOL
32	COSTAL KARNATAKA	WFS	WFS	WFS	WFS	WFS	WFS	WFS
33	NORTH INTERIOR KARNATAKA	WFS	FWS	SCT	SCT	SCT	SCT	SCT
34	SOUTH INTERIOR KARNATAKA	SCT	SCT	SCT	SCT	SCT	SCT	SCT
35	KERALA AND MAHE	WFS	WFS	WFS	FWS	FWS	FWS	FWS
36	LAKSHADWEEP	WFS	WFS	FWS	FWS	FWS	FWS	FWS

- As the lead period increases forecast accuracy decrease.





- Action may be taken based on ORANGE AND REDCOLOUR warnings.
- Vulnerable regions likely urban and hilly areas action may be initiated for heavy rainfall warning.
- As the lead period increases forecast accuracy decreases.

Detailed districtwise Multi Hazard weather warning for next five days available at
<https://mausam.imd.gov.in/responsive/districtWiseWarningGIS.php>

Weather forecast over Delhi/NCR during 27th to 30th September 2025

Past Weather:

There has been no large change in the minimum and maximum temperatures over Delhi/NCR during the past 24 hours. The maximum and minimum temperatures over Delhi were around 34 to 36°C and 23 to 25°C respectively. The minimum temperature was above normal up to 1 – 2°C and maximum temperature was above normal up to 1 – 2°C. Mainly clear sky conditions with predominant surface wind from the northwest direction with wind speeds up to 18 kmph with gusty wind up to 30 kmph prevailed during the past 24 hours. Mainly clear sky conditions with a wind speed of less than 10 kmph from the northeast direction prevailed over the region in the forenoon today.

Weather Forecast:

27.09.2025: Mainly clear sky becoming partly cloudy sky towards afternoon/evening. The maximum and minimum temperatures over Delhi are likely to be in the range of 35 to 37°C. The maximum temperature will be above normal up to 1 – 2°C. The predominant surface wind will likely to be from the east direction with a wind speed of up to 08-12 kmph during afternoon hours. The wind speed will decrease becoming less than 10 kmph from the east direction during the evening and night.

28.09.2025: Partly cloudy sky. The maximum and minimum temperatures over Delhi are likely to be in the range of 35 to 37°C and 25 to 27°C respectively. The minimum temperature will be above normal up to 1 – 2°C and the maximum temperature will be above normal up to 1 – 2°C. The predominant surface wind will likely to be from the southeast direction with a wind speed of up to 08-12 kmph during morning hours. The wind speed will gradually increase becoming less than 15 kmph from the east direction in the afternoon. The wind speed will decrease becoming less than 12 kmph from the east direction during the evening and night.

29.09.2025: Partly cloudy sky. The maximum and minimum temperatures over Delhi are likely to be in the range of 33 to 35°C and 25 to 27°C respectively. The minimum temperature will be above normal up to 1 – 2°C and the maximum temperature will be near normal. The predominant surface wind will likely to be from the southeast direction with a wind speed of up to 05-10 kmph during morning hours. The wind speed will gradually increase becoming less than 15 kmph from the northeast direction in the afternoon. The wind speed will decrease becoming less than 10 kmph from the east direction during the evening and night.

30.09.2025: Generally cloudy sky. One or two spells of very light rain/drizzle. The maximum and minimum temperatures over Delhi are likely to be in the range of 33 to 35°C and 24 to 26°C respectively. The minimum temperature will be above normal up to 1 – 2°C and the maximum temperature will be near normal. The predominant surface wind will likely to be from the southeast direction with a wind speed of up to 10 - 15 kmph during morning hours. The wind speed will gradually increase becoming less than 18 kmph from the east direction in the afternoon. The wind speed will decrease becoming less than 12 kmph from the east direction during the evening and night.

Impact & Action Suggested due to

- ❖ **Extremely heavy rainfall (≥21 cm)** at isolated places over north Konkan and Ghat areas of Madhya Maharashtra on 28th & 29th; south Gujarat Region on 28th; Saurashtra & Kutch on 29th September.
- ❖ **Very heavy rainfall (12-20 cm)** at isolated places over southwest Madhya Pradesh, Vidarbha, north Konkan, north Madhya Maharashtra, Kerala & Mahe, Telangana & North Interior Karnataka on 27th; Marathwada on 27th & 28th; south Gujarat Region on 29th; Saurashtra & Kutch on 30th September; Assam & Meghalaya and Nagaland, Manipur, Mizoram & Tripura on 02nd & 03rd October.

Impact Expected

- Water logging/ flooding in many parts of low lying area and river banks
- Localized and short term disruption to municipal services (water, electricity, etc.)
- Major disruption of traffic flow. Major roads/local trains affected.
- Possibility of danger to very old buildings and unmaintained structures, falling of trees etc
- Closure of roads crossing low water bridges.

Action Suggested

- Traffic may be regulated effectively
- People in the affected area may restrict their movement.

Agromet advisories for likely impact of Heavy / Heavy to Very Heavy / Extremely Heavy Rainfall

- In Odisha, ensure proper drainage to drain out excess water from rice, finger millet, maize, groundnut, cotton, sesame and vegetables. Make arrangement for covering vegetables nurseries like chilli, okra and brinjal with plastic cover or polythene sheet.
- In Maharashtra, In the districts of Konkan, make arrangements to drain out excess water from rice, groundnut, vegetables and orchard; In Madhya Maharashtra, keep the harvested produce of black gram, soybean and kidney beans (rajma) at safer places and ensure proper drainage in the fields of rice, pigeon pea, soybean, maize, cotton, sugarcane, vegetables and orchards. In Marathwada, drain out excess water from soybean, cotton, pigeon pea, vegetables and orchards. Keep the harvested produce of sapota and custard apple at safer places. In Vidarbha, make arrangements to drain out excess water from pigeon pea, cotton, soybean, sorghum, maize and vegetables. Store the harvested green gram and black gram at safe places, if storage is not possible cover it with plastic / tarpaulin sheets.
- In West Madhya Pradesh, ensure proper drainage in the fields of soybean, maize, cotton, black gram and vegetables. Keep the harvested produce of soybean and other field crops at safer places. Keep the harvested produce at safer places.
- In Gujarat, keep the harvested produce at safer places. Make necessary arrangements to drain out excess water from the fields of rice, sugarcane, vegetables and fruit orchards in Gujarat region; and cotton, pigeon pea, pearl millet and vegetables in Saurashtra & Kutch.
- In Telangana, drain out excess rain water from fields of rice, maize, cotton, soybean, pigeon pea and turmeric. Keep the harvested produce at safer places.
- In North Kerala, ensure proper drainage in the fields of rice, coconut, banana, cardamom, black pepper and vegetables.
- In North Interior Karnataka, ensure proper drainage facilities in fields of pigeon pea, groundnut, soybean, maize, cotton, vegetables and fruit orchards.
- In Coastal Andhra Pradesh, make arrangements to drain out excess water from fields of rice, maize, pigeon pea, green gram, groundnut, sugarcane, cotton, vegetables and fruit orchards.

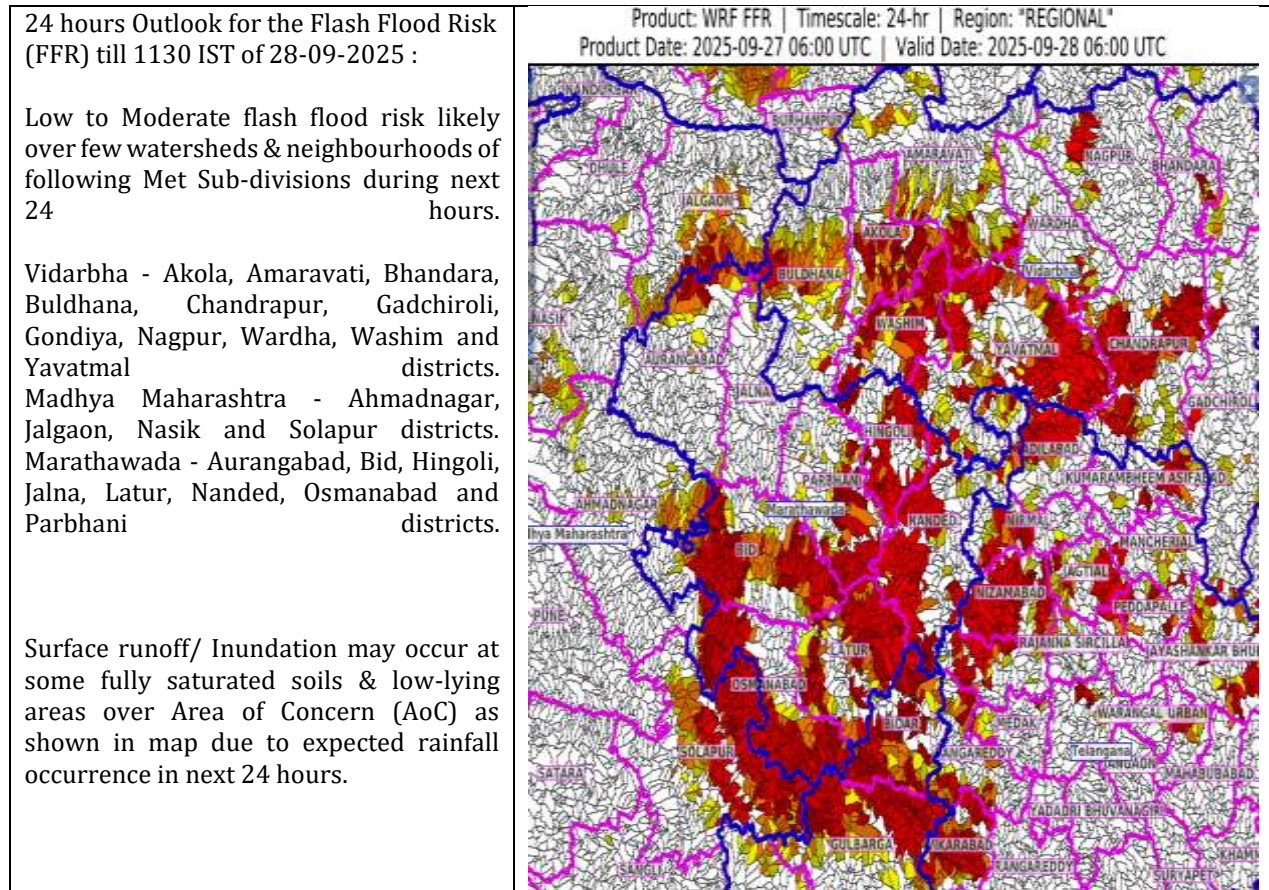
Livestock / Fishery

- Keep the animals inside the shed during heavy rainfall and provide them balanced feed.
- Store feed and fodder in a safe place to prevent spoilage.
- Construct an outlet with proper netting around the ponds to drain out excess water, thereby preventing fish from escaping in case of overflow.

Agromet advisories for likely impact of Thunderstorm / Gusty Winds / Squally Winds

- Provide mechanical support to horticultural crops and staking or support to vegetables and young fruit plants / fruit-bearing plants to avoid lodging due to strong winds.

Flash Flood Guidance:



Legends & abbreviations:

- ❖ **Heavy Rain:**64.5-115.5mm; **Very Heavy Rain:**115.6-204.4mm; **Extremely Heavy Rain:** >204.4mm.
- ❖ **Obsy:** Observatory; Automatic Weather Station; **ARG:** Automatic Rain Gauge; **dist:** District; **NH:** National Highway; **KVK:** Krishi Vigyan Kendra; **DVC:** Damodar Valley Corporation; **PTO:** Part Time Office, **Aero:** Aerodrome, **IAF:** Indian Air Force.
- ❖ **Region wise classification of meteorological Sub-Divisions:**
 - **Northwest India:** Western Himalayan Region (Jammu-Kashmir-Ladakh-Gilgit-Baltistan-Muzaffarabad, Himachal Pradesh and Uttarakhand); Punjab, Haryana-Chandigarh-Delhi; West Uttar Pradesh, East Uttar Pradesh, West Rajasthan and East Rajasthan.
 - **Central India:** West Madhya Pradesh, East Madhya Pradesh, Vidarbha and Chhattisgarh.
 - **East India:** Bihar, Jharkhand, Sub-Himalayan West Bengal & Sikkim; Gangetic West Bengal, Odisha and Andaman & Nicobar Islands.
 - **Northeast India:** Arunachal Pradesh, Assam & Meghalaya and Nagaland, Manipur, Mizoram & Tripura.
 - **West India:** Gujarat Region, Saurashtra & Kutch, Konkan & Goa, Madhya Maharashtra and Marathawada.
 - **South India:** Coastal Andhra Pradesh & Yanam, Telangana, Rayalaseema, Coastal Karnataka, North Interior Karnataka, South Interior Karnataka, Kerala & Mahe, Tamil Nadu, Puducherry & Karaikal and Lakshadweep.

LEGENDS

1. अंडमान और निकोबार द्वीपसमूह

2. अरुणाचल प्रदेश

3. असम और मेघालय

4. नागालैंड, मणिपुर, मिजोरम और त्रिपुरा

5. उप-हिमालयी पश्चिम बंगाल और सिक्किम

6. गंगीय पश्चिम बंगाल

7. ओडिशा

8. झारखंड

9. बिहार

10. पूर्वी उत्तर प्रदेश

11. पश्चिम उत्तर प्रदेश

12. उत्तराखंड

13. हरियाणा, चंडीगढ़ और दिल्ली

14. पंजाब

15. हिमाचल प्रदेश

16. जम्मू और कश्मीर और लद्दाख

17. पश्चिम राजस्थान

18. पूर्वी राजस्थान

19. पश्चिम मध्य प्रदेश

20. पूर्वी मध्य प्रदेश

21. गुजरात

22. सौराष्ट्र

23. कोंकण और गोवा

24. मध्य महाराष्ट्र

25. मराठवाड़ा

26. विदर्भ

27. छत्तीसगढ़

28. तटीय आंध्र प्रदेश और यनम

29. तेलंगाना

30. रायलसीमा

31. तमिलनाडु, पुडुचेरी और कराईकल

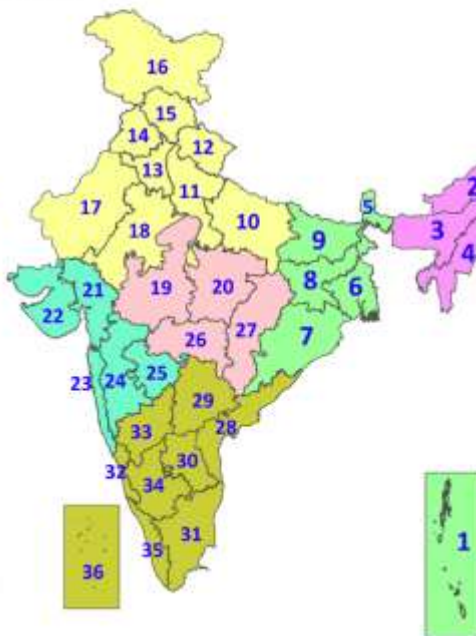
32. तटीय कर्नाटक

33. आंतरिक उत्तरी कर्नाटक

34. आंतरिक दक्षिणी कर्नाटक

35. केरल और माहे

36. लक्षद्वीप



1. Andaman & Nicobar Islands

2. Arunachal Pradesh

3. Assam & Meghalaya

4. Nagaland, Manipur, Mizoram & Tripura

5. Sub-Himalayan West Bengal & Sikkim

6. Gangetic West Bengal

7. Odisha

8. Jharkhand

9. Bihar

10. East Uttar Pradesh

11. West Uttar Pradesh

12. Uttarakhand

13. Haryana, Chandigarh & Delhi

14. Punjab

15. Himachal Pradesh

16. Jammu & Kashmir and Ladakh

17. West Rajasthan

18. East Rajasthan

19. West Madhya Pradesh

20. East Madhya Pradesh

21. Gujarat

22. Saurashtra

23. Konkan & Goa

24. Madhya Maharashtra

25. Marathwada

26. Vidarbha

27. Chhattisgarh

28. Coastal Andhra Pradesh & Yanam

29. Telangana

30. Rayalaseema

31. Tamilnadu, Puducherry & Karaikal

32. Coastal Karnataka

33. North Interior Karnataka

34. South Interior Karnataka

35. Kerala & Mahe

36. Lakshadweep

SPATIAL DISTRIBUTION (% of Stations reporting)

% Stations	Category	% Stations	Category
76-100	Widespread (WS/Most Places)	26-50	Scattered (SCT/A Few Places)
51-75	Fairly Widespread (FWS/Many Places)	1-25	Isolated (ISOL)



Fog



Heavy Snow



Cold Wave



Heavy Rain



Dust Storm



Cold Day



Very Heavy Rain



Heat Wave



Ground Frost



Extremely Heavy Rain



Warm Night



Thunder & Lightning



Hot Day



Hailstorm



Hot & Humid



Dust Raising Winds



Strong Surface Winds

COLOUR CODED WARNING

No Warning (No Action)

Watch (Be Aware)

Alert (Be Prepared To Take Action)

Warning (Take Action)

Probabilistic Forecast

Terms	Probability of Occurrence (%)
Unlikely	< 25
Likely	25 - 50
Very Likely	50 - 75
Most Likely	> 75

* Red colour warning does not mean "Red Alert", Red colour warning means "Take Action".

Forecast and Warning for any day is valid from 0830 hours IST of day till 0830 hours IST of next day.

For more details, kindly visit <https://mausam.imd.gov.in> or contact: 011-2434-4599

(Service to the Nation since 1875)

DEFINITION/CRITERIA

Rain/ Snow *

Heavy: 64.5 to 115.5 mm/cm *
Very Heavy: 115.6 to 204.4 mm/cm *
Extremely Heavy: > 204.4 mm/cm *

Heat Wave

When maximum temperature of a station reaches $\geq 40^{\circ}\text{C}$ for plains and $\geq 30^{\circ}\text{C}$ for hilly regions
(a) Based on Departure from normal

Heat Wave: Maximum Temperature Departure from normal 4.5°C to 6.4°C .

Severe Heat Wave: Maximum Temperature Departure from normal $\geq 6.5^{\circ}\text{C}$

(b). Based on Actual maximum temperature

Heat Wave: When actual maximum temperature $\geq 45^{\circ}\text{C}$.

Severe Heat Wave: When actual maximum temperature $\geq 47^{\circ}\text{C}$.

(c). Criteria for heat wave for coastal stations

When maximum temperature departure is $> 4.5^{\circ}\text{C}$ from normal. Heat Wave may be described provided maximum temperature $\geq 37^{\circ}\text{C}$.

Warm Night

When maximum temperature remains 40°C

Warm Night: When minimum temperature departure 4.5°C to 6.4°C .

Severe Warm Night: When minimum temperature departure $> 6.4^{\circ}\text{C}$.

Cold Wave

When minimum temperature of a station $\leq 10^{\circ}\text{C}$ for plains and $\leq 0^{\circ}\text{C}$ for hilly regions.

(a). Based on departure

Cold Wave: Minimum Temperature Departure from normal -4.5°C to -6.4°C .

Severe Cold Wave: Minimum Temperature Departure from normal $\leq -6.5^{\circ}\text{C}$

(b) Based on actual Minimum Temperature (for Plains only)

Cold Wave: When Minimum Temperature is $\leq 4.0^{\circ}\text{C}$

Severe Cold Wave: When Minimum Temperature is $\leq 2.0^{\circ}\text{C}$

(c) For Coastal Stations

When Minimum Temperature departure is $\leq -4.5^{\circ}\text{C}$ & actual Minimum Temperature is $\leq 15^{\circ}\text{C}$

Cold Day

When minimum temperature of a station $\leq 10^{\circ}\text{C}$ for plains and $\leq 0^{\circ}\text{C}$ for hilly regions

Based on departure

Cold Day: Maximum Temperature Departure from normal -4.5°C to -6.4°C .

Severe Cold Day: Maximum Temperature Departure from normal $\leq -6.5^{\circ}\text{C}$

Fog

Phenomenon of small droplets suspended in air and the horizontal visibility $< 1\text{km}$

Moderate Fog: When the visibility between 500-200 metres

Dense Fog: when the visibility between 50- 200 metres

Very Dense Fog: when the visibility < 50 metres

Thunderstorm

Sudden electrical discharges manifested by a flash of light (Lightning) and a sharp rumbling sound (thunder)

Dust/Sand Storm

An ensemble of particles of dust or sand energetically lifted to great heights by a strong and turbulent wind.

Frost

Ice deposits on ground

Air temperature $\leq 4^{\circ}\text{C}$ (over Plains)

Squall

A strong wind that rises suddenly, lasts for atleast 1 minute.

Moderate: Wind speed 52-61 kmph

Severe: Wind speed 62-67 kmph

Very Severe: Wind speed > 67 kmph

Sea State

Effect of various waves in the sea over specific area

Rough to very rough: Wind speed 41-62 kmph (22-33 knots) & Wave height 2.5-6 metre

High to very high: Wind speed 63-117 kmph (34-63 knots) & Wave height 6-14 metre

Phenomenal: Wind speed > 117 kmph (> 63 knots) & Wave height > 14 metre

Cyclone

Cyclonic Storm: Wind speed 62-87 kmph (34-47 knots)

Severe Cyclonic Storm: Wind speed 88-117 kmph (48-63 knots)

Very Severe Cyclonic Storm: Wind speed 118-165 kmph (64 - 89 knots)

Extremely Severe Cyclonic Storm: Wind speed 166-220 kmph (90 -119 knots)

Super Cyclone Storm: Wind speed > 220 kmph (> 119 knots)

* Red colour warning does not mean "Red Alert", Red colour warning means "Take Action".

Forecast and Warning for any day is valid from 0830 hours IST of day till 0830 hours IST of next day.

For more details, kindly visit <https://mausam.imd.gov.in> or contact: 011-2434-4599

(Service to the Nation since 1875)

Hot and Humid: When maximum temperatures remain 3°C above normal along with the above normal relative humidity.