



Government of India
Ministry of Earth Sciences
India Meteorological Department



Press Release

Date: 28th September, 2025

Time of Issue: 1340 hours IST

Subject: i) A well-marked low-pressure area lay over West Vidarbha & adjoining North Madhya Maharashtra. Under its influence, heavy to very heavy rainfall likely at some places over Konkan, Madhya Maharashtra, Gujarat state during 28th September - 01st October. Isolated extremely heavy rainfall is also likely over north Konkan (including Mumbai), north Madhya Maharashtra and south Gujarat Region on 28th; Saurashtra & Kutch on 29th September.

Realised weather during past 24 hours till 0830 hours IST of today, the 28th September, 2025:

- ❖ **Heavy to very heavy rainfall (7-20 cm)** has been recorded at many places over Konkan, Madhya Maharashtra, Marathawada; at isolated places over Gujarat Region.
 - ❖ **Heavy rainfall (7-11 cm)** has been recorded at isolated places over West Madhya Pradesh, Bihar, Odisha, Vidarbha, Meghalaya, Coastal Andhra Pradesh, Kerala, Telangana, Coastal Karnataka.
- For more details of realised weather, kindly refer [Annexure I](#).**

Withdrawal of southwest Monsoon:

- ❖ The line of withdrawal of southwest monsoon continues to pass through 20°N/ 69°E, Veraval, Bharuch, Ujjain, Jhansi, Shahjahanpur and 30°N/81°E. ([Annexure II](#))
- ❖ Conditions are not favourable for further withdrawal of southwest monsoon during next 7 days.

i. Weather Systems, Forecast and Warnings (refer to [Annexure III & IV](#)):

- ❖ Yesterday's depression over south interior Odisha moved nearly westwards and weakened into a well-marked low-pressure area over West Vidarbha and adjoining North Madhya Maharashtra at 0830 hours IST of today, the 28th September 2025. It is likely to weaken further into a low-pressure area during next 24 hours. It is likely to continue to move nearly westwards across north Madhya Maharashtra, south Gujarat & Saurashtra during 28th to 30th September and emerge as a low-pressure area over Northeast Arabian Sea off Gujarat coast by 1st October.
- ❖ A **trough** runs from the well-marked low-pressure area over west Vidarbha & adjoining north Madhya Maharashtra to west central Bay of Bengal across south Chhattisgarh, north Coastal Andhra Pradesh in lower tropospheric level.
- ❖ An **upper air cyclonic circulation** lies over Punjab & neighbourhood in lower tropospheric level.
- ❖ An **upper air cyclonic circulation** is likely to emerge into north Andaman Sea on 30th September. Under its influence a low pressure area is likely to form over north & adjoining central Bay of Bengal around 01st October 2025.

Under the influence of these systems, the following weather is likely:

West India:

- ❖ Light to moderate rain/thunderstorm at most/many places with **heavy rainfall** likely over Konkan & Goa, Madhya Maharashtra during next 7 days; Marathawada on 28th September; Gujarat State during 28th September-01st October with **very heavy rainfall at some places over Konkan, Madhya Maharashtra, Gujarat Region on 28th & 29th; Saurashtra & Kutch during 28th -30th September with isolated Extremely heavy rainfall**

over north Konkan (including Mumbai), north Madhya Maharashtra, south Gujarat Region on 28th; Saurashtra & Kutch on 29th September.

East & Central India:

- ❖ Light to moderate rain/thunderstorm at most/many places with isolated **heavy rainfall** likely over Andaman & Nicobar Islands on 29th & 30th September; Sub-Himalayan West Bengal & Sikkim during 02nd -04th October; Gangetic West Bengal on 02nd & 03rd October; Bihar during 01st -04th October; Jharkhand on 02nd October; Odisha during 01st -03rd October; West Madhya Pradesh on 28th September, 03rd & 04th October; East Madhya Pradesh on 03rd & 04th October; Vidarbha on 28th September & during 02nd -04th October; Chhattisgarh during 29th September-04th October with **isolated very heavy rainfall over Gangetic West Bengal on 02nd October; Sub-Himalayan West Bengal & Sikkim on 03rd October; Bihar on 03rd & 04th October.**
- ❖ Thunderstorm & gusty winds (speed reaching 40-50 kmph) very likely over Andaman & Nicobar Islands during next 5 days.
- ❖ Thunderstorm & gusty winds (speed reaching 30-40 kmph) very likely over Sub-Himalayan West Bengal & Sikkim, Bihar during next 7 days; Gangetic West Bengal, Jharkhand, Odisha during next 5 days; Andaman & Nicobar Islands on 03rd October.

Northeast India:

- ❖ Light/moderate rain/thunderstorm at many/some places with isolated **heavy rainfall** likely over Assam & Meghalaya during 30th September-04th October; Nagaland, Manipur, Mizoram & Tripura during 29th September-03rd October; Arunachal Pradesh during 01st-04th October with **very heavy rainfall over Nagaland, Manipur, Mizoram & Tripura on 02nd October; Arunachal Pradesh, Assam & Meghalaya on 03rd & 04th October.**

South Peninsular India:

- ❖ Light to moderate rain/thunderstorm at many/some places with isolated **heavy rainfall** likely over Tamil Nadu, Kerala & Mahe on 28th September; Coastal & North Interior Karnataka on 28th September & 04th October; Coastal Andhra Pradesh & Yanam on 02nd & 03rd October; Telangana on 28th September, 03rd & 04th October.
- ❖ Strong surface winds (speed reaching 40-50 kmph) very likely over Coastal Andhra Pradesh & Yanam, Rayalaseema on 28th & 29th September; Telangana on 28th September.
- ❖ Strong surface winds (speed reaching 30-40 kmph) very likely over Tamil Nadu, Kerala & Mahe, Lakshadweep on 28th September; Coastal Andhra Pradesh & Yanam, Rayalaseema on 30th September; Telangana during 29th September-02nd October.

Northwest India:

- ❖ Isolated **heavy rainfall** likely over southeast Rajasthan on 28th September.
- ❖ Thunderstorm with lightning very likely over West Rajasthan on 29th & 30th September and East Rajasthan during next 5 days.

Fishermen warnings:

Fishermen are advised not to venture into the following areas during 28th September to 03rd October:

Arabian Sea:

- Along and off Konkan & Goa, Karnataka, Kerala, Lakshadweep and adjoining sea areas during 28th to 30th September, over Konkan off Goa coasts during 30th September to 02nd October, south Gujarat on 28th September and entire Gujarat coasts during 29th September to 03rd October.
- Some parts of southwest adjoining westcentral Arabian Sea, along and off Somalia coast during 28th September to 03rd October, some parts of eastcentral adjoining northeast Arabian Sea during 28th September to 03rd October, and Lakshadweep area during 28th to 30th September.

Bay of Bengal:

- Along and off Tamil Nadu, Andhra Pradesh, Odisha, West Bengal, Bangladesh, Myanmar, Andaman Sea and most parts of Bay of Bengal during 01st to 03rd October.
- Andaman Sea, Andhra Pradesh, Tamil Nadu, Sri Lanka coasts, Gulf of Mannar & adjoining Comorin area during 28th September to 01st October and over South & Central Bay of Bengal during 28th September to 01st October.

ii. Weather conditions and forecast over Delhi/NCR during 28th September to 01st October, 2025 (Annexure V)

For more details, kindly refer National Weather Bulletin:

https://mausam.imd.gov.in/responsive/all_india_forecast_bulletin.php

For District wise warnings refer: <https://mausam.imd.gov.in/responsive/districtWiseWarningGIS.php>

For Fishermen warning refer <https://rsmcnewdelhi.imd.gov.in/fishermen-warning.php>

ANNEXURE I

Rainfall recorded (in cm) during past 24 hours till 0830 hours IST of today, the 28th September (≥ 7cm):

- ❖ **Konkan:** Palghar_agri (dist Palghar) 18, Dahanu - Imd Obsy (dist Palghar) 13, Colaba - Imd Obsy (dist Mumbai City) 12, Murbad (dist Thane) 12, Thane (dist Thane) 12, Jawhar (dist palghar) 11, Mandangad (dist Ratnagiri) 11, Vikramgad (dist Palghar) 11, Mangaon (dist Raigad) 10, Khed (dist Ratnagiri) 9, Pen (dist Raigad) 9, Sudhagad Pali (dist Raigad) 9, Wada (dist Palghar) 9, Shriwardhan (dist Raigad) 9, Matheran (dist Raigad) 8, Vasai (dist Palghar) 8, Tala (dist Raigad) 8, Santacruz - Imd Obsy (dist Mumbai Suburban) 8, Mokhedra - Fmo (dist Palghar) 8, Dapoli_agri (dist Ratnagiri) 8, Mhasla (dist Raigad) 8, Uran (dist Raigad) 8, Poladpur (dist Raigad) 8, Tbia Imd Part Time (dist Thane) 8, Karjat_agri (dist Raigad) 7, Talasari (dist Palghar) 7, Mahad (dist Raigad) 7, Wakwali_agri (dist Ratnagiri) 7, Harnai Imd Obsy (dist Ratnagiri) 7, Shahapur (dist Thane) 7, Savarde-arg (dist Ratnagiri) 7,
- ❖ **Madhya Maharashtra:** Surgana (dist Nashik) 17, Harsul - Fmo (dist Nashik) 16, Nandgaon (dist Nashik) 15, Rahuri (dist Ahilyanagar) 13, Kopargaon (dist Ahilyanagar) 13, Shevgaon (dist Ahilyanagar) 12, Yeola (dist Nashik) 12, Nevasa (dist Ahilyanagar) 11, Shrirampur (dist Ahilyanagar) 11, Peth (dist Nashik) 10, Jamkhed (dist Ahilyanagar) 10, Ozarkhedra - Fmo (dist Nashik) 9, Chalisgaon (dist Jalgaon) 9, Lonavala_agri (dist Pune) 9, Ahilyanagar - Imd Pt (dist Ahilyanagar) 9, Pathardi (dist Ahilyanagar) 8, Bhadgaon (dist Jalgaon) 8, Trimbakshwar (dist Nashik) 8, Erandol (dist Jalgaon) 8, Pimpalgaonbaswant_agri (dist Nashik) 8, Pachora (dist Jalgaon) 8, Dindori (dist Nashik) 8, Niphad (dist Nashik) 8, Ambegaon Ghodegaon (dist Pune) 7, Malegaon Camp - Imd Pt (dist Nashik) 7, Dharangaon (dist Jalgaon) 7, Shahuwadi (dist Kolhapur) 7, Savlivihi_agri (dist Ahilyanagar) 7, Chas_agri (dist Ahilyanagar) 7, Nashik - Imd Obsy (dist Nashik) 7, Sangola (dist Sholapur) 7, Sinnar (dist Nashik) 7, Akole (dist Ahilyanagar) 7, Jamner (dist Jalgaon) 7, Nandurbar (dist Nandurbar) 7, Mulher - Fmo (dist Nashik) 7, Igatpuri (dist Nashik) 7, Devla (dist Nashik) 7, Talegaon Aws (dist Pune) 7,
- ❖ **Gujarat Region:** Nanipalson (dist Valsad) 15, Kaprada (dist Valsad) 12, Silvassa (dist Dadara & Nagar Haveli) 11, Madhbun (dist Dadara & Nagar Haveli) 10, Dangs (ahwa) (dist Dangs) 10, Waghai (dist Dangs) 8, Dang_kvks Aws (dist Dangs) 8, Daman_aws (dist Daman) 7, Daman (dist Daman) 7, Pardi (dist Valsad) 7, Subir (dist Dangs) 7,
- ❖ **Marathwada:** Loha (dist Nanded) 13, Kannad (dist Chh. Sambhajinagar) 13, Vaijapur (dist Chh. Sambhajinagar) 12, Khultabad (dist Chh. Sambhajinagar) 11, Tondapur- Arg (dist Hingoli) 10, Phulambri (dist Chh. Sambhajinagar) 10, Palam (dist Parbhani) 10, Patoda (dist Beed) 9, Purna (dist Parbhani) 9, Gangapur (dist Chh. Sambhajinagar) 9, Dharur (dist Beed) 9, Shirur Kasar (dist Beed) 9, Washi (dist Dharashiv) 9, Kallamnuri (dist Hingoli) 9, Vasmat (dist Hingoli) 9, Mahur (dist Nanded) 9, Bhum (dist Dharashiv) 8, Ambejogai / Mominabad (dist Beed) 8, Beed (dist Beed) 8, Manjlegaon (dist Beed) 8, Aundha Nagnath (dist Hingoli) 8, Bhokardan (dist Jalna) 8, Georai (dist Beed) 7, Wadawani (dist Beed) 7, Ambad (dist Jalna) 7, Sengaon (dist Hingoli) 7, Soegaon (dist Chh. Sambhajinagar) 7,
- ❖ **West Madhya Pradesh:** Khirkiya-arg (dist Harda) 11, Harda (dist Harda) 7, Dolariya (dist Narmadapuram) 7, Bhikangaon (dist Khargone) 7, Timarni (dist Harda) 7,
- ❖ **Coastal Andhra Pradesh:** Komarada (dist Parvathipuram Manyam) 10, Parvathipuram (dist Parvathipuram Manyam) 9,
- ❖ **Vidarbha:** Umerkhed (dist Yeotmal) 9, Lonar (dist Buldhana) 9, Mahagaon (dist Yeotmal) 8, Sakoli (dist Bhandara) 7, Digras (dist Yeotmal) 7, Sindkhed Raja (dist Buldhana) 7,
- ❖ **Orissa:** Harichandanpur (dist Keonjhar) 8,
- ❖ **Meghalaya:** Nongstein (dist West Khasi Hills) 8,
- ❖ **Telangana:** Ars_basanthpur(a) (dist Medak) 8,
- ❖ **Bihar:** Athmalgola (dist Patna) 7,
- ❖ **Kerala:** Panathur (Kasargod district) 7,
- ❖ **Coastal Karnataka:** Shakti Nagar Obsy (dist Dakshina Kannada) 7, Mangaluru Ap Obsy (dist Dakshina Kannada) 7, Puttur Hms (dist Dakshina Kannada) 7.

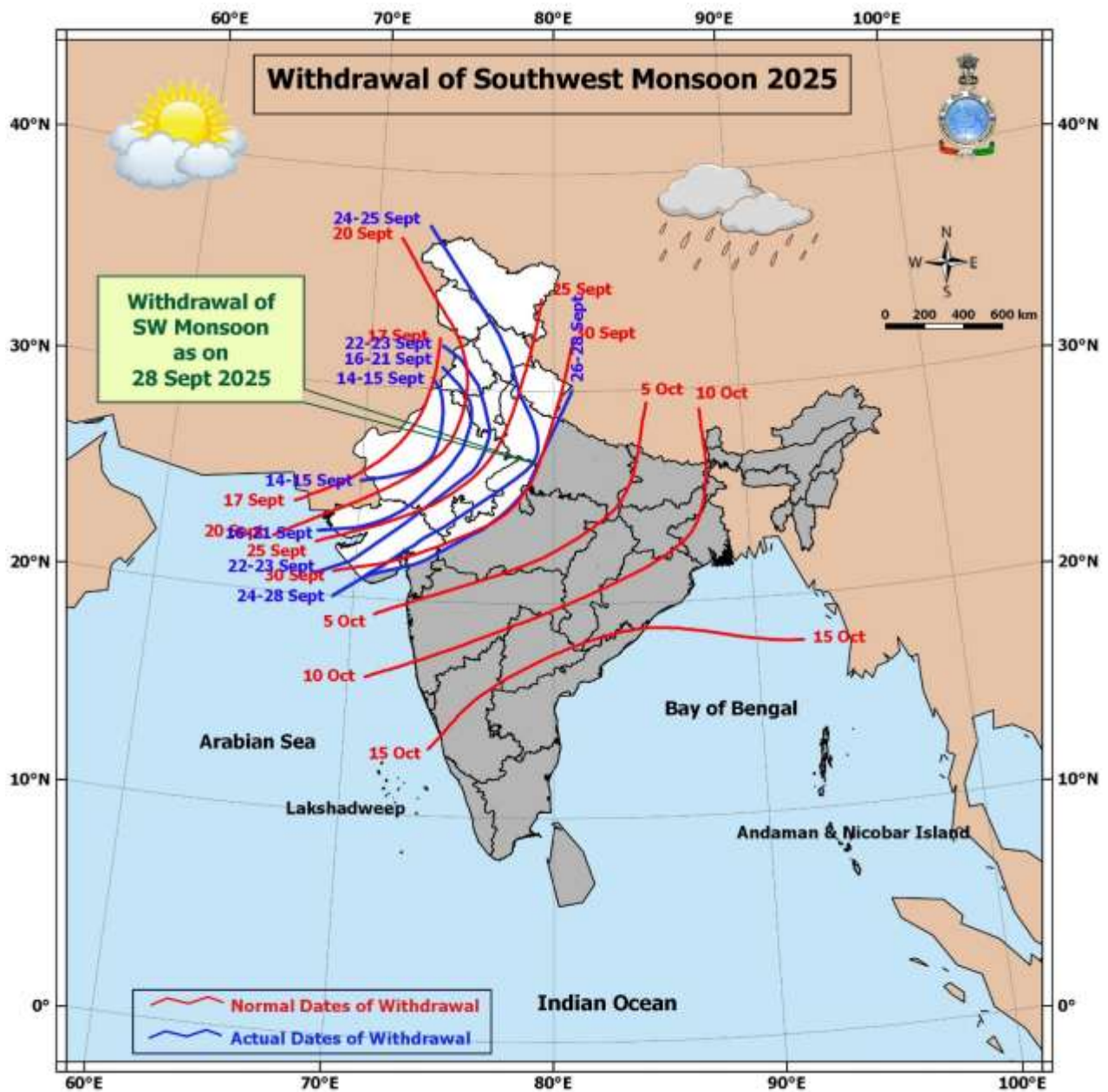
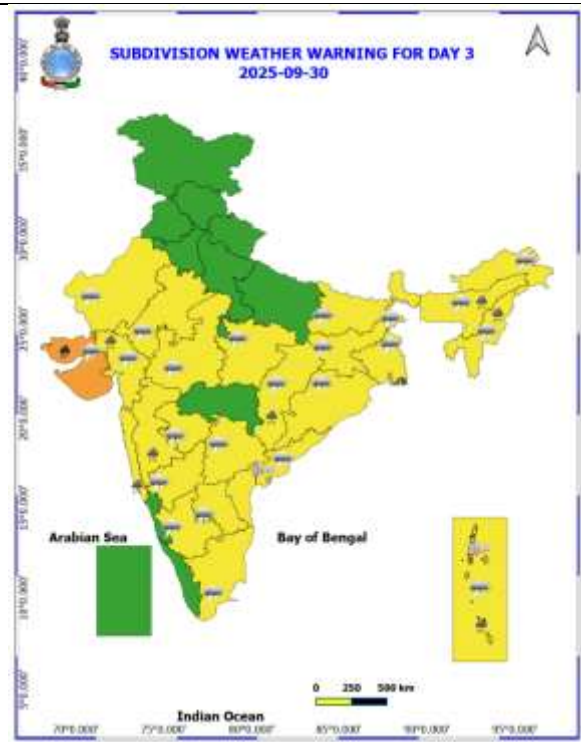
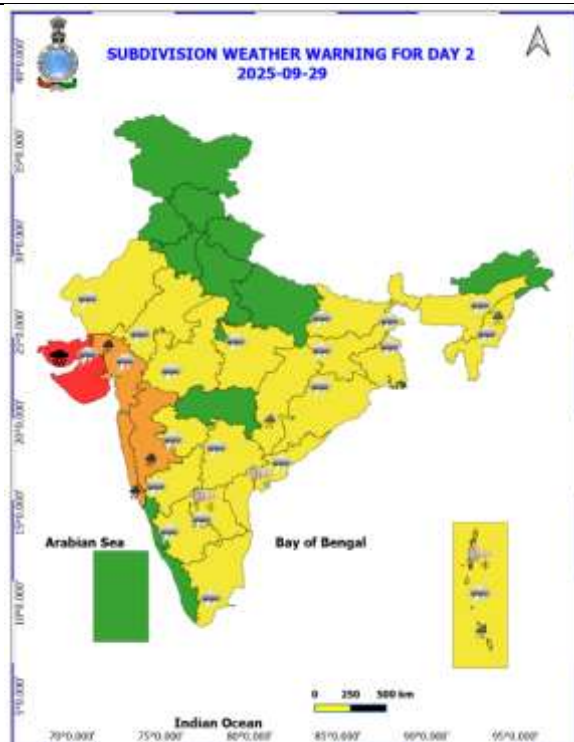
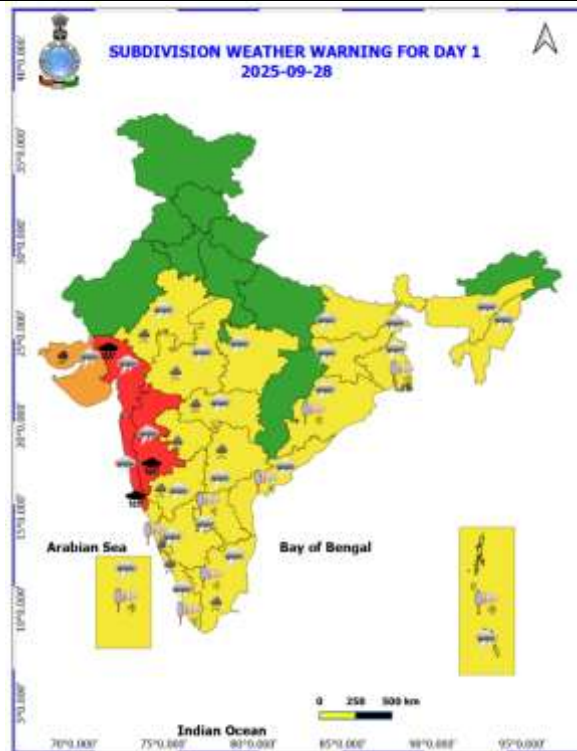
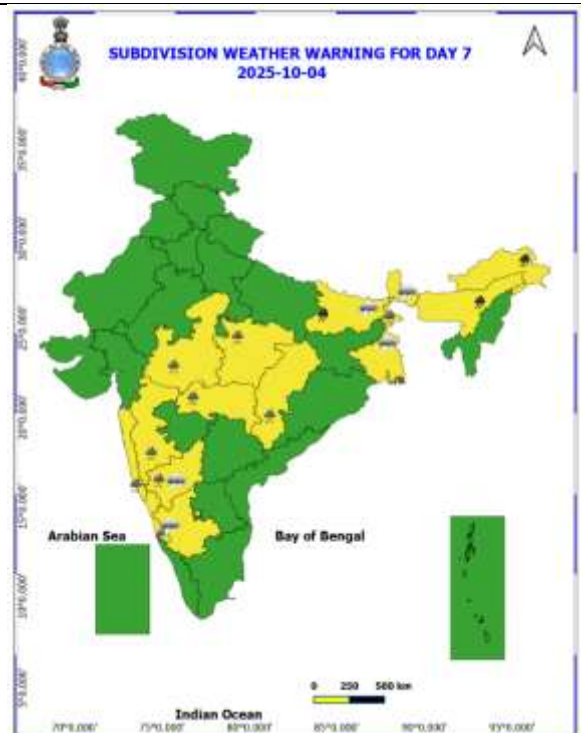
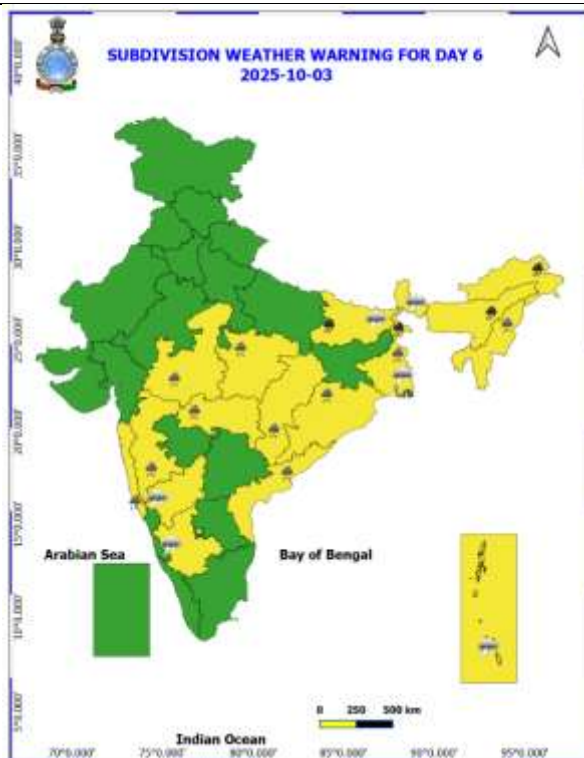
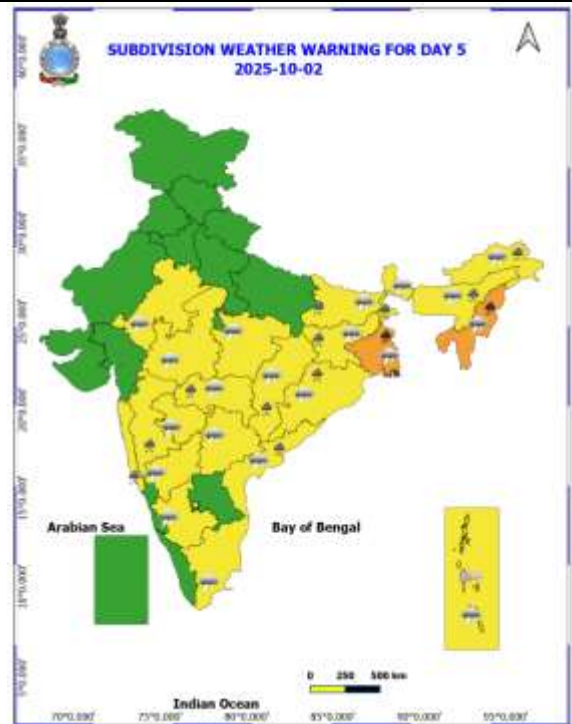
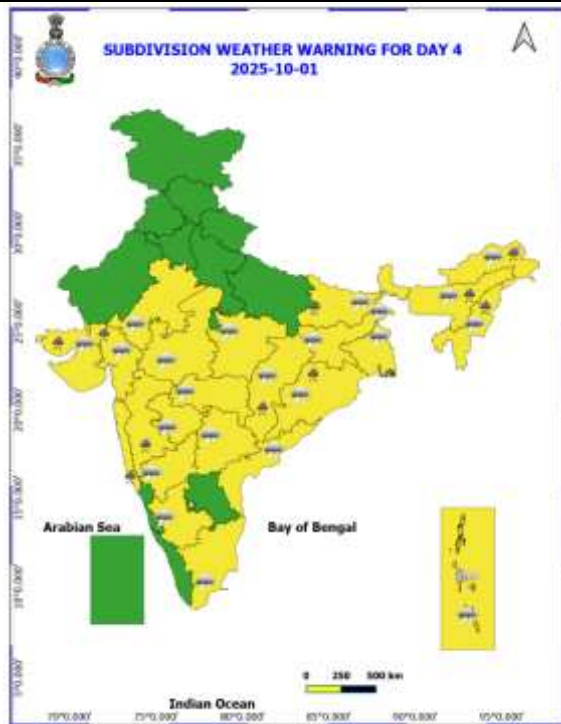


Table-1								
7 Days Rainfall Forecast								
S.No.	Subdivision	28- Sep	29- Sep	30- Sep	1- Oct	2- Oct	3- Oct	4- Oct
		Day 1	Day 2	Day 3	Day 4	Day 5	Day 6	Day 7
1	ANDAMAN & NICOBAR ISLANDS	FWS	FWS	FWS	FWS	SCT	ISOL	ISOL
2	ARUNACHAL PRADESH	ISOL	SCT	FWS	WS	WS	WS	FWS
3	ASSAM & MEHGHALAYA	ISOL	SCT	FWS	FWS	FWS	FWS	FWS
4	NAGALAND, MANIPUR, MIZORAM AND TRIPURA	FWS	FWS	FWS	FWS	FWS	FWS	SCT
5	SUB HIMALAYAN WEST BENGAL & SIKKIM	ISOL	ISOL	FWS	FWS	WS	WS	WS
6	GANGETIC WEST BENGAL	SCT	SCT	FWS	FWS	WS	WS	FWS
7	ODISHA	FWS	SCT	SCT	FWS	FWS	FWS	SCT
8	JHARKHAND	SCT	ISOL	SCT	FWS	WS	WS	WS
9	BIHAR	ISOL	ISOL	SCT	SCT	FWS	FWS	WS
10	EAST UTTAR PRADESH	ISOL	ISOL	ISOL	SCT	SCT	ISOL	SCT
11	WEST UTTAR PRADESH	ISOL	ISOL	ISOL	ISOL	ISOL	ISOL	ISOL
12	UTTARAKHAND	ISOL	ISOL	ISOL	ISOL	ISOL	ISOL	ISOL
13	HARYANA, CHANDIGARH & DELHI	DRY	ISOL	ISOL	DRY	DRY	DRY	DRY
14	PUNJAB	DRY	DRY	DRY	DRY	DRY	DRY	DRY
15	HIMACHAL PRADESH	DRY	DRY	DRY	DRY	DRY	DRY	ISOL
16	JAMMU AND KASHMIR AND LADAKH	DRY	DRY	DRY	DRY	DRY	DRY	ISOL
17	WEST RAJASTHAN	ISOL	ISOL	ISOL	ISOL	DRY	DRY	DRY
18	EAST RAJASTHAN	ISOL	SCT	SCT	ISOL	ISOL	ISOL	ISOL
19	WEST MADHYA PRADESH	WS	FWS	FWS	FWS	FWS	WS	WS
20	EAST MADHYA PRADESH	FWS	FWS	FWS	WS	WS	WS	WS
21	GUJRAT REGION	WS	WS	WS	WS	FWS	FWS	FWS
22	SAURASHTRA & KUTCH	FWS	WS	WS	WS	FWS	SCT	ISOL
23	KONKAN & GOA	WS	WS	WS	WS	WS	WS	WS
24	MADHYA MAHARASHTRA	WS	WS	WS	FWS	FWS	FWS	FWS
25	MARATHWADA	FWS	FWS	SCT	SCT	FWS	FWS	FWS
26	VIDARBHA	FWS	SCT	FWS	FWS	FWS	WS	WS
27	CHHATTISGARH	SCT	SCT	FWS	WS	WS	WS	FWS
28	COASTAL ANDHRA PRADESH	SCT	SCT	SCT	SCT	SCT	FWS	SCT
29	TELANGANA	FWS	SCT	SCT	SCT	SCT	FWS	FWS
30	RAYALASEEMA	ISOL	ISOL	ISOL	ISOL	SCT	SCT	SCT
31	TAMILNADU & PUDUCHERRY	ISOL	ISOL	ISOL	ISOL	SCT	SCT	SCT
32	COSTAL KARNATAKA	WS	WS	WS	WS	WS	WS	WS
33	NORTH INTERIOR KARNATAKA	WS	FWS	SCT	SCT	FWS	FWS	WS
34	SOUTH INTERIOR KARNATAKA	SCT	SCT	SCT	SCT	FWS	FWS	FWS
35	KERALA AND MAHE	WS	WS	FWS	FWS	FWS	FWS	FWS
36	LAKSHADWEEP	WS	FWS	FWS	FWS	FWS	FWS	FWS

- As the lead period increases forecast accuracy decrease.





- Action may be taken based on ORANGE AND REDCOLOUR warnings.
- Vulnerable regions likely urban and hilly areas action may be initiated for heavy rainfall warning.
- As the lead period increases forecast accuracy decreases.

Detailed districtwise Multi Hazard weather warning for next five days available at
<https://mausam.imd.gov.in/responsive/districtWiseWarningGIS.php>

Weather forecast over Delhi/NCR during 28th to 01st October 2025**Past Weather:**

There has been rise in the minimum temperature up to 1 – 2°C and maximum temperature up to 1°C over Delhi/NCR during the past 24 hours. The maximum and minimum temperatures over Delhi were around 35 to 37°C and 25 to 28°C respectively. The minimum temperature was above normal up to 2 – 5°C and maximum temperature was above normal up to 2 – 4°C. Mainly clear sky conditions with predominant surface wind from the northeast direction with wind speeds up to 12 kmph prevailed during the past 24 hours. Mainly clear sky conditions with a wind speed of less than 18 kmph from the east direction prevailed over the region in the forenoon today.

Weather Forecast:

28.09.2025: Partly cloudy sky. The maximum and minimum temperatures over Delhi are likely to be in the range of 36 to 38°C. The maximum temperature will be above normal up to 2 – 4°C. The predominant surface wind will likely to be from the southeast direction with a wind speed of up to 10-15 kmph during afternoon hours. The wind speed will decrease becoming less than 12 kmph from the southeast direction during the evening and night.

29.09.2025: Partly cloudy sky. The maximum and minimum temperatures over Delhi are likely to be in the range of 34 to 36°C and 25 to 27°C respectively. The minimum temperature will be above normal up to 2 – 4°C and the maximum temperature will be above normal up to 1 – 2°C. The predominant surface wind will likely to be from the southeast direction with a wind speed of up to 10-15 kmph during morning hours. The wind speed will gradually increase becoming less than 18 kmph from the southeast direction in the afternoon. The wind speed will decrease becoming less than 15 kmph from the northeast direction during the evening and night.

30.09.2025: Generally cloudy sky. A spell of very light rain/drizzle. The maximum and minimum temperatures over Delhi are likely to be in the range of 32 to 34°C and 24 to 26°C respectively. The minimum temperature will be above normal up to 1 – 2°C and the maximum temperature will be near normal. The predominant surface wind will likely to be from the northeast direction with a wind speed of up to 05-10 kmph during morning hours. The wind speed will gradually increase becoming less than 15 kmph from the southeast direction in the afternoon. The wind speed will increase becoming less than 25 kmph from the northeast direction during the evening and night.

01.10.2025: Generally cloudy sky. A spell of very light rain/drizzle. The maximum and minimum temperatures over Delhi are likely to be in the range of 33 to 35°C and 24 to 26°C respectively. The minimum temperature will be above normal up to 1 – 2°C and the maximum temperature will be near normal. The predominant surface wind will likely to be from the northwest direction with a wind speed of up to 05 - 10 kmph during morning hours. The wind speed will gradually increase becoming less than 15 kmph from the north direction in the afternoon. The wind speed will decrease becoming less than 12 kmph from the northeast direction during the evening and night.

Impact & Action Suggested due to

- ❖ **Extremely heavy rainfall (≥21 cm)** at isolated places over north Konkan, north Madhya Maharashtra, south Gujarat Region on 28th; Saurashtra & Kutch on 29th September.
- ❖ **Very heavy rainfall (12-20 cm)** at some places over Konkan, Madhya Maharashtra, Gujarat Region on 28th & 29th September; Saurashtra & Kutch during 28th -30th September; at isolated places over Gangetic West Bengal on 02nd October; Sub-Himalayan West Bengal & Sikkim on 03rd October; Bihar on 03rd & 04th October; Nagaland, Manipur, Mizoram & Tripura on 02nd October; Arunachal Pradesh, Assam & Meghalaya on 03rd & 04th October.

Impact Expected

- Water logging/ flooding in many parts of low lying area and river banks
- Localized and short term disruption to municipal services (water, electricity, etc.)
- Major disruption of traffic flow. Major roads/local trains affected.
- Possibility of danger to very old buildings and unmaintained structures, falling of trees etc
- Closure of roads crossing low water bridges.

Action Suggested

- Traffic may be regulated effectively
- People in the affected area may restrict their movement.

Agromet advisories for likely impact of Heavy / Heavy to Very Heavy / Extremely Heavy Rainfall

- In **Maharashtra**, drain out excess water from fields of rice, groundnut, ginger, vegetables and fruit orchards in the districts of **Konkan**. In **Madhya Maharashtra**, keep the harvested produce of black gram, soybean and kidney beans (rajma) at safer places and drain out excess water from fields of rice, pigeon pea, soybean, maize, cotton, sugarcane, vegetables and fruit orchards. In **Marathwada**, drain out excess water from fields of soybean, cotton, pigeon pea, vegetables and fruit orchards and keep the harvested produce of sapota and custard apple at safer places. In **Vidarbha**, make arrangements to drain out excess water from fields of pigeon pea, cotton, soybean, sorghum, maize and vegetables. Store the harvested produce of green gram and black gram at safe places; if storage is not possible cover the harvested produce with plastic / tarpaulin sheets.
- In **Gujarat**, keep the harvested produce of crops such as groundnut, sesame, maize, pearl millet, soybean etc. at safer places. Make necessary arrangements to drain out excess water from fields of rice, sugarcane, cotton, pigeon pea, soybean, groundnut, maize, pearl millet, castor, vegetables and fruit orchards in **Gujarat region** and cotton, pigeon pea, groundnut, black gram, green gram, castor, pearl millet, soybean, sesame and vegetables in **Saurashtra & Kutch**.
- In **South East Rajasthan**, make provision to drain out excess rain water from fields of maize, cotton, black gram, soybean and vegetables.
- In **West Madhya Pradesh**, ensure proper drainage in the fields of soybean, maize, cotton, black gram and vegetables and keep the harvested produce of soybean, maize and black gram and other field crops at safer places.
- In **Karnataka**, provide adequate drainage facilities in fields of rice, cotton, ginger and plantations of arecanut, coconut, banana and black pepper in **Coastal Karnataka** and fields of pigeon pea, groundnut, soybean, maize, cotton, vegetables and fruit orchards in **North Interior Karnataka**.

Livestock / Fishery

- Keep the animals inside the shed during heavy rainfall and provide them balanced feed.
- Store feed and fodder in a safe place to prevent spoilage.
- Construct an outlet with proper netting around the ponds to drain out excess water, thereby preventing fish from escaping in case of overflow.

Agromet advisories for likely impact of Thunderstorm / Gusty Winds / Squally Winds

- Provide mechanical support to horticultural crops and staking or support to vegetables and young fruit plants / fruit-bearing plants to avoid lodging due to strong winds.

Flash Flood Guidance:

24 hours Outlook for the Flash Flood Risk (FFR) till 1130 IST of 29-09-2025 :

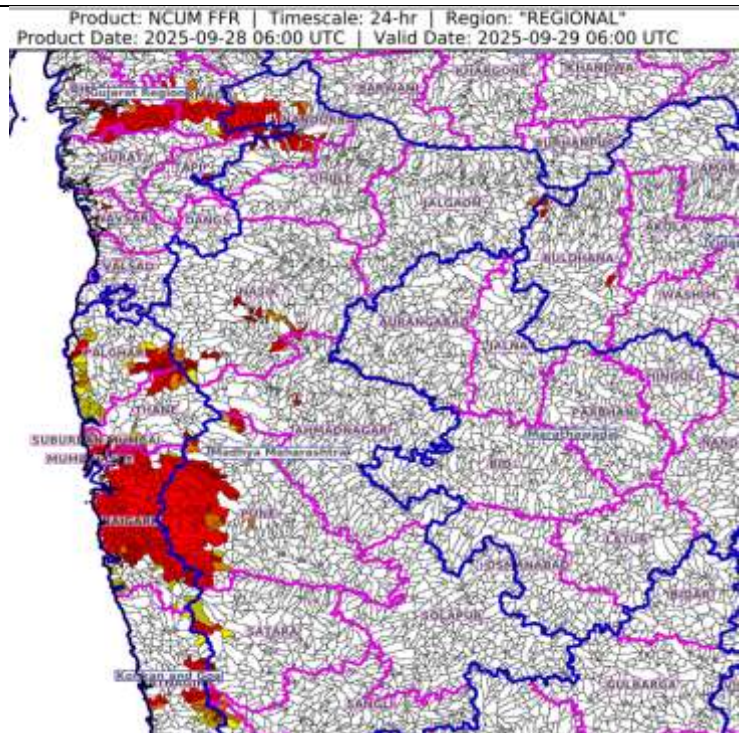
Low to Moderate flash flood risk likely over few watersheds & neighbourhoods of following Met Sub-divisions during next 24 hours.

Konkan & Goa - Mumbai City, Palghar, Raigarh, Ratnagiri, Suburban Mumbai and Thane districts.

South Gujarat Region - Dadar & Nagar Haveli, Bharuch, Narmada, Navsari, Surat, Tapi and Valsad districts.

Madhya Maharashtra - Ahmadnagar, Dhule, Nandurbar, Nasik, Pune and Satara districts.

Surface runoff/ Inundation may occur at some fully saturated soils & low-lying areas over Area of Concern (AoC) as shown in map due to expected rainfall occurrence in next 24 hours.



Legends & abbreviations:

- ❖ **Heavy Rain:**64.5-115.5mm; **Very Heavy Rain:**115.6-204.4mm; **Extremely Heavy Rain:** >204.4mm.
- ❖ **Obsy:** Observatory; Automatic Weather Station; **ARG:** Automatic Rain Gauge; **dist:** District; **NH:** National Highway; **KVK:** Krishi Vigyan Kendra; **DVC:** Damodar Valley Corporation; **PTO:** Part Time Office, **Aero:** Aerodrome, **IAF:** Indian Air Force.
- ❖ **Region wise classification of meteorological Sub-Divisions:**
 - **Northwest India:** Western Himalayan Region (Jammu-Kashmir-Ladakh-Gilgit-Baltistan-Muzaffarabad, Himachal Pradesh and Uttarakhand); Punjab, Haryana-Chandigarh-Delhi; West Uttar Pradesh, East Uttar Pradesh, West Rajasthan and East Rajasthan.
 - **Central India:** West Madhya Pradesh, East Madhya Pradesh, Vidarbha and Chhattisgarh.
 - **East India:** Bihar, Jharkhand, Sub-Himalayan West Bengal & Sikkim; Gangetic West Bengal, Odisha and Andaman & Nicobar Islands.
 - **Northeast India:** Arunachal Pradesh, Assam & Meghalaya and Nagaland, Manipur, Mizoram & Tripura.
 - **West India:** Gujarat Region, Saurashtra & Kutch, Konkan & Goa, Madhya Maharashtra and Marathawada.
 - **South India:** Coastal Andhra Pradesh & Yanam, Telangana, Rayalaseema, Coastal Karnataka, North Interior Karnataka, South Interior Karnataka, Kerala & Mahe, Tamil Nadu, Puducherry & Karaikal and Lakshadweep.

LEGENDS

1. अंडमान और निकोबार द्वीपसमूह

2. अरुणाचल प्रदेश

3. असम और मेघालय

4. नागालैंड, मणिपुर, मिजोरम और त्रिपुरा

5. उप-हिमालयी पश्चिम बंगाल और सिक्किम

6. गंगीय पश्चिम बंगाल

7. ओडिशा

8. झारखंड

9. बिहार

10. पूर्वी उत्तर प्रदेश

11. पश्चिम उत्तर प्रदेश

12. उत्तराखंड

13. हरियाणा, चंडीगढ़ और दिल्ली

14. पंजाब

15. हिमाचल प्रदेश

16. जम्मू और कश्मीर और लद्दाख

17. पश्चिम राजस्थान

18. पूर्वी राजस्थान

19. पश्चिम मध्य प्रदेश

20. पूर्वी मध्य प्रदेश

21. गुजरात

22. सौराष्ट्र

23. कोंकण और गोवा

24. मध्य महाराष्ट्र

25. मराठवाड़ा

26. विदर्भ

27. छत्तीसगढ़

28. तटीय आंध्र प्रदेश और यनम

29. तेलंगाना

30. रायलसीमा

31. तमिलनाडु, पुडुचेरी और कराईकल

32. तटीय कर्नाटक

33. आंतरिक उत्तरी कर्नाटक

34. आंतरिक दक्षिणी कर्नाटक

35. केरल और माहे

36. लक्षद्वीप



1. Andaman & Nicobar Islands

2. Arunachal Pradesh

3. Assam & Meghalaya

4. Nagaland, Manipur, Mizoram & Tripura

5. Sub-Himalayan West Bengal & Sikkim

6. Gangetic West Bengal

7. Odisha

8. Jharkhand

9. Bihar

10. East Uttar Pradesh

11. West Uttar Pradesh

12. Uttarakhand

13. Haryana, Chandigarh & Delhi

14. Punjab

15. Himachal Pradesh

16. Jammu & Kashmir and Ladakh

17. West Rajasthan

18. East Rajasthan

19. West Madhya Pradesh

20. East Madhya Pradesh

21. Gujarat

22. Saurashtra

23. Konkan & Goa

24. Madhya Maharashtra

25. Marathwada

26. Vidarbha

27. Chhattisgarh

28. Coastal Andhra Pradesh & Yanam

29. Telangana

30. Rayalaseema

31. Tamilnadu, Puducherry & Karaikal

32. Coastal Karnataka

33. North Interior Karnataka

34. South Interior Karnataka

35. Kerala & Mahe

36. Lakshadweep

SPATIAL DISTRIBUTION (% of Stations reporting)

% Stations	Category	% Stations	Category
76-100	Widespread (WS/Most Places)	26-50	Scattered (SCT/A Few Places)
51-75	Fairly Widespread (FWS/Many Places)	1-25	Isolated (ISOL)



Fog



Heavy Snow



Cold Wave



Heavy Rain



Dust Storm



Cold Day



Very Heavy Rain



Heat Wave



Ground Frost



Extremely Heavy Rain



Warm Night



Thunder & Lightning



Hot Day



Hailstorm



Hot & Humid



Dust Raising Winds



Strong Surface Winds

COLOUR CODED WARNING

No Warning (No Action)

Watch (Be Aware)

Alert (Be Prepared To Take Action)

Warning (Take Action)

Probabilistic Forecast

Terms	Probability of Occurrence (%)
Unlikely	< 25
Likely	25 - 50
Very Likely	50 - 75
Most Likely	> 75

* Red colour warning does not mean "Red Alert", Red colour warning means "Take Action".

Forecast and Warning for any day is valid from 0830 hours IST of day till 0830 hours IST of next day.

For more details, kindly visit <https://mausam.imd.gov.in> or contact: 011-2434-4599

(Service to the Nation since 1875)

DEFINITION/CRITERIA

Rain/ Snow *

Heavy: 64.5 to 115.5 mm/cm *
Very Heavy: 115.6 to 204.4 mm/cm *
Extremely Heavy: > 204.4 mm/cm *

Heat Wave

When maximum temperature of a station reaches $\geq 40^{\circ}\text{C}$ for plains and $\geq 30^{\circ}\text{C}$ for hilly regions
(a) Based on Departure from normal

Heat Wave: Maximum Temperature Departure from normal 4.5°C to 6.4°C .

Severe Heat Wave: Maximum Temperature Departure from normal $\geq 6.5^{\circ}\text{C}$

(b). Based on Actual maximum temperature

Heat Wave: When actual maximum temperature $\geq 45^{\circ}\text{C}$.

Severe Heat Wave: When actual maximum temperature $\geq 47^{\circ}\text{C}$.

(c). Criteria for heat wave for coastal stations

When maximum temperature departure is $> 4.5^{\circ}\text{C}$ from normal. Heat Wave may be described provided maximum temperature $\geq 37^{\circ}\text{C}$.

Warm Night

When maximum temperature remains 40°C

Warm Night: When minimum temperature departure 4.5°C to 6.4°C .

Severe Warm Night: When minimum temperature departure $> 6.4^{\circ}\text{C}$.

Cold Wave

When minimum temperature of a station $\leq 10^{\circ}\text{C}$ for plains and $\leq 0^{\circ}\text{C}$ for hilly regions.

(a). Based on departure

Cold Wave: Minimum Temperature Departure from normal -4.5°C to -6.4°C .

Severe Cold Wave: Minimum Temperature Departure from normal $\leq -6.5^{\circ}\text{C}$

(b) Based on actual Minimum Temperature (for Plains only)

Cold Wave: When Minimum Temperature is $\leq 4.0^{\circ}\text{C}$

Severe Cold Wave: When Minimum Temperature is $\leq 2.0^{\circ}\text{C}$

(c) For Coastal Stations

When Minimum Temperature departure is $\leq -4.5^{\circ}\text{C}$ & actual Minimum Temperature is $\leq 15^{\circ}\text{C}$

Cold Day

When minimum temperature of a station $\leq 10^{\circ}\text{C}$ for plains and $\leq 0^{\circ}\text{C}$ for hilly regions

Based on departure

Cold Day: Maximum Temperature Departure from normal -4.5°C to -6.4°C .

Severe Cold Day: Maximum Temperature Departure from normal $\leq -6.5^{\circ}\text{C}$

Fog

Phenomenon of small droplets suspended in air and the horizontal visibility $< 1\text{km}$

Moderate Fog: When the visibility between 500-200 metres

Dense Fog: when the visibility between 50- 200 metres

Very Dense Fog: when the visibility < 50 metres

Thunderstorm

Sudden electrical discharges manifested by a flash of light (Lightning) and a sharp rumbling sound (thunder)

Dust/Sand Storm

An ensemble of particles of dust or sand energetically lifted to great heights by a strong and turbulent wind.

Frost

Ice deposits on ground

Air temperature $\leq 4^{\circ}\text{C}$ (over Plains)

Squall

A strong wind that rises suddenly, lasts for atleast 1 minute.

Moderate: Wind speed 52-61 kmph

Severe: Wind speed 62-67 kmph

Very Severe: Wind speed > 67 kmph

Sea State

Effect of various waves in the sea over specific area

Rough to very rough: Wind speed 41-62 kmph (22-33 knots) & Wave height 2.5-6 metre

High to very high: Wind speed 63-117 kmph (34-63 knots) & Wave height 6-14 metre

Phenomenal: Wind speed > 117 kmph (> 63 knots) & Wave height > 14 metre

Cyclone

Cyclonic Storm: Wind speed 62-87 kmph (34-47 knots)

Severe Cyclonic Storm: Wind speed 88-117 kmph (48-63 knots)

Very Severe Cyclonic Storm: Wind speed 118-165 kmph (64 - 89 knots)

Extremely Severe Cyclonic Storm: Wind speed 166-220 kmph (90 -119 knots)

Super Cyclone Storm: Wind speed > 220 kmph (> 119 knots)

* Red colour warning does not mean "Red Alert", Red colour warning means "Take Action".

Forecast and Warning for any day is valid from 0830 hours IST of day till 0830 hours IST of next day.

For more details, kindly visit <https://mausam.imd.gov.in> or contact: 011-2434-4599

(Service to the Nation since 1875)

Hot and Humid: When maximum temperatures remain 3°C above normal along with the above normal relative humidity.