



Government of India
Ministry of Earth Sciences
India Meteorological Department



Press Release

Date: 02nd October, 2025

Time of Issue: 1330 hours IST

Subject: (i) Under the influence of deep depression over west central & adjoining northwest Bay of Bengal, heavy to very heavy rainfall at many places with extremely heavy rainfall at isolated places likely over south Chhattisgarh, Odisha & north Coastal Andhra Pradesh today, the 02nd October and over Bihar on 03rd & 04th October.

(ii) A fresh intense western disturbance is likely cause heavy to very heavy rainfall spell over Northwest India during 05th-07th October with peak intensity on 06th October.

Realised weather during past 24 hours till 0830 hours IST of today, the 02nd October, 2025:

- ❖ **Extremely heavy rainfall (≥ 21 cm)** has been recorded at isolated places over Jharkhand
- ❖ **Heavy to very heavy rainfall (7-20 cm)** has been recorded at isolated places over Assam, Sub-Himalayan West Bengal & Sikkim, Bihar, East Uttar Pradesh, Coastal Andhra Pradesh.
- ❖ **Heavy rainfall (7-11 cm)** has been recorded at isolated places over Tripura, Gangetic West Bengal, Odisha, East Madhya Pradesh, Saurashtra & Kutch, Coastal Karnataka.

For more details of realised weather, kindly refer [Annexure I](#).

Withdrawal of southwest Monsoon:

- ❖ The line of withdrawal of southwest monsoon continues to pass through 20°N/ 69°E, Veraval, Bharuch, Ujjain, Jhansi, Shahjahanpur and 30°N/81°E. ([Annexure II](#))

i. Weather Systems, Forecast and Warnings (refer to Annexure III & IV):

- ❖ Yesterday's **Well Marked Low Pressure Area** over westcentral Bay of Bengal concentrated into a **depression** over the same region at 1130 hrs IST of 01st October 2025. It further intensified into a **deep depression** over west central and adjoining northwest Bay of Bengal at 0530 hrs IST of today & persisted over the same region at 0830 hrs IST of today. It is very likely to continue to move north-northwestwards and cross Odisha and adjoining Andhra Pradesh coasts between Gopalpur and Paradip by night of 2nd October.
- ❖ Yesterday's **well-marked low-pressure** area over northeast Arabian Sea and adjoining Saurashtra coast concentrated into a **depression** over northeast Arabian Sea at 1730 hours IST of 01st October, 2025 & persisted over the same region at 0830 hrs IST of today. It is likely to move southwestwards towards northwest Arabian Sea during next 3 days.
- ❖ An **upper air cyclonic circulation** lies over central Uttar Pradesh & neighbourhood at lower tropospheric level.
- ❖ An **upper air cyclonic circulation** lies over northwest Rajasthan & neighbourhood at lower tropospheric lower tropospheric level.
- ❖ An **upper air cyclonic circulation** lies over Arunachal Pradesh & neighbourhood at lower tropospheric level.
- ❖ A fresh **Western Disturbance** is likely to affect northwest India from 04th October 2025. High moisture feeding is likely from Arabian sea as well as Bay of Bengal to northwest India at lower tropospheric levels majorly during 05th to 07th October, 2025. Due to this system along with confluence of winds and high moisture, there is possibility of heavy to very heavy precipitation with hailstorm over northwest India during the same period with peak intensity on 06th October, 2025.

Under the influence of these systems, the following weather is likely:

East & Central India:

- ❖ **Isolated Extremely heavy rainfall (≥ 21 cm) likely over Chhattisgarh & Odisha on 02nd, Bihar on 03rd & 04th October.**

- ❖ Light to moderate rain/thunderstorm at most/many places with isolated **heavy rainfall** likely over Vidarbha on 02nd; East Madhya Pradesh & Chhattisgarh during 02nd -04th; Sub-Himalayan West Bengal & Sikkim during 02nd -06th; Gangetic West Bengal, Jharkhand during 02nd -05th; Bihar during 02nd -07th; Odisha on 02nd & 03rd October with **isolated very heavy rainfall over Gangetic West Bengal, Odisha, Jharkhand and Chhattisgarh on 02nd & 03rd; East Madhya Pradesh on 03rd; Sub-Himalayan West Bengal & Sikkim during 3rd -05th; Bihar during 02nd -05th October.**
- ❖ Thunderstorm & gusty winds (speed reaching 50-60 kmph) very likely over Odisha on 02nd; (speed reaching 40-50 kmph) over Gangetic West Bengal on 02nd & 03rd; (speed reaching 30-40 kmph) very likely over Sub-Himalayan West Bengal & Sikkim during next 3 days; Gangetic West Bengal during 04th -06th; Odisha on 03rd Bihar during next 7 days; Jharkhand during next 5 days.

Northeast India:

- ❖ Light/moderate rain/thunderstorm at many/some places with isolated **heavy rainfall** likely over Arunachal Pradesh, Nagaland, Manipur, Mizoram & Tripura during the week except on 05th & 06th; Assam & Meghalaya during the week except on 06th & 07th with **very heavy rainfall** over Assam & Meghalaya on 03rd October.

South Peninsular India:

- ❖ **Isolated Extremely heavy rainfall (≥ 21 cm) likely** over Coastal Andhra Pradesh & Yanam on 02nd October.
- ❖ Light to moderate rain/thunderstorm at many/some places with isolated **heavy rainfall** likely over Tamil Nadu during 02nd-05th, Coastal Andhra Pradesh & Yanam on 02nd & 03rd and **heavy to very heavy rainfall** over Coastal Andhra Pradesh & Yanam on 02nd October.
- ❖ Strong surface winds (speed reaching 50-60 kmph) over Coastal Andhra Pradesh & Yanam on 02nd & 03rd October; (speed reaching 30-40 kmph) very likely over Telangana during next 5 days.
- ❖ Hot & Humid conditions likely to prevail over Tamil Nadu on 02nd October.

Northwest India:

- ❖ **Isolated Extremely heavy rainfall (≥ 21 cm) likely over** East Uttar Pradesh on 04th October.
- ❖ Isolated to scattered rainfall very likely over Northwest India during 02nd-04th and increase thereafter with fairly widespread to widespread rainfall accompanied with thunderstorm & lightning during 05th-08th October.
- ❖ isolated **heavy rainfall** likely over Jammu-Kashmir-Ladakh, Himachal Pradesh, Punjab during 05th -07th; east Uttarakhand on 02nd, 06th & 07th; West Uttar Pradesh, Haryana Chandigarh & Delhi on 06th & 07th; East Uttar Pradesh during 02nd -05th; West Rajasthan on 05th & 06th; East Rajasthan on 06th October with **very heavy rainfall** over Jammu-Kashmir, Himachal Pradesh, Uttarakhand, Punjab, Haryana Chandigarh & Delhi on 06th; East Uttar Pradesh during 03rd-05th October.
- ❖ Isolated **hailstorm** activity is also likely over Jammu-Kashmir, Himachal Pradesh, Uttarakhand, Punjab on 05th & 06th; West Uttar Pradesh, Haryana Chandigarh & Delhi on 06th October.
- ❖ Strong surface winds (speed reaching 40-50 kmph) over East Uttar Pradesh during 03rd & 04th; (speed reaching 30-40 kmph) very likely over Jammu-Kashmir over 04th -08th, Himachal Pradesh 05th -07th; West Rajasthan on 05th & 06th; East Rajasthan on 06th October.

West India:

- ❖ Light to moderate rain/thunderstorm at most/many places with **heavy rainfall** likely over Saurashtra & Kutch on 02nd October.

Fishermen warnings:

Fishermen are advised not to venture into the following areas during 02nd October to 05th October:
Arabian Sea:

- Northeast Arabian Sea, adjoining areas of northwest Arabian Sea and along & off North Gujarat coast till 3rd October; Westcentral Arabian Sea and adjoining areas of Eastcentral Arabian Sea during 2nd – 5th October.

Bay of Bengal:

- Westcentral & adjoining northwest Bay of Bengal and along & off Andhra Pradesh-Odisha-West Bengal coasts till evening of 3rd October.

ii. Weather conditions and forecast over Delhi/NCR during 02nd to 05th October, 2025 (Annexure V)

For more details, kindly refer National Weather Bulletin:

https://mausam.imd.gov.in/responsive/all_india_forecast_bulletin.php

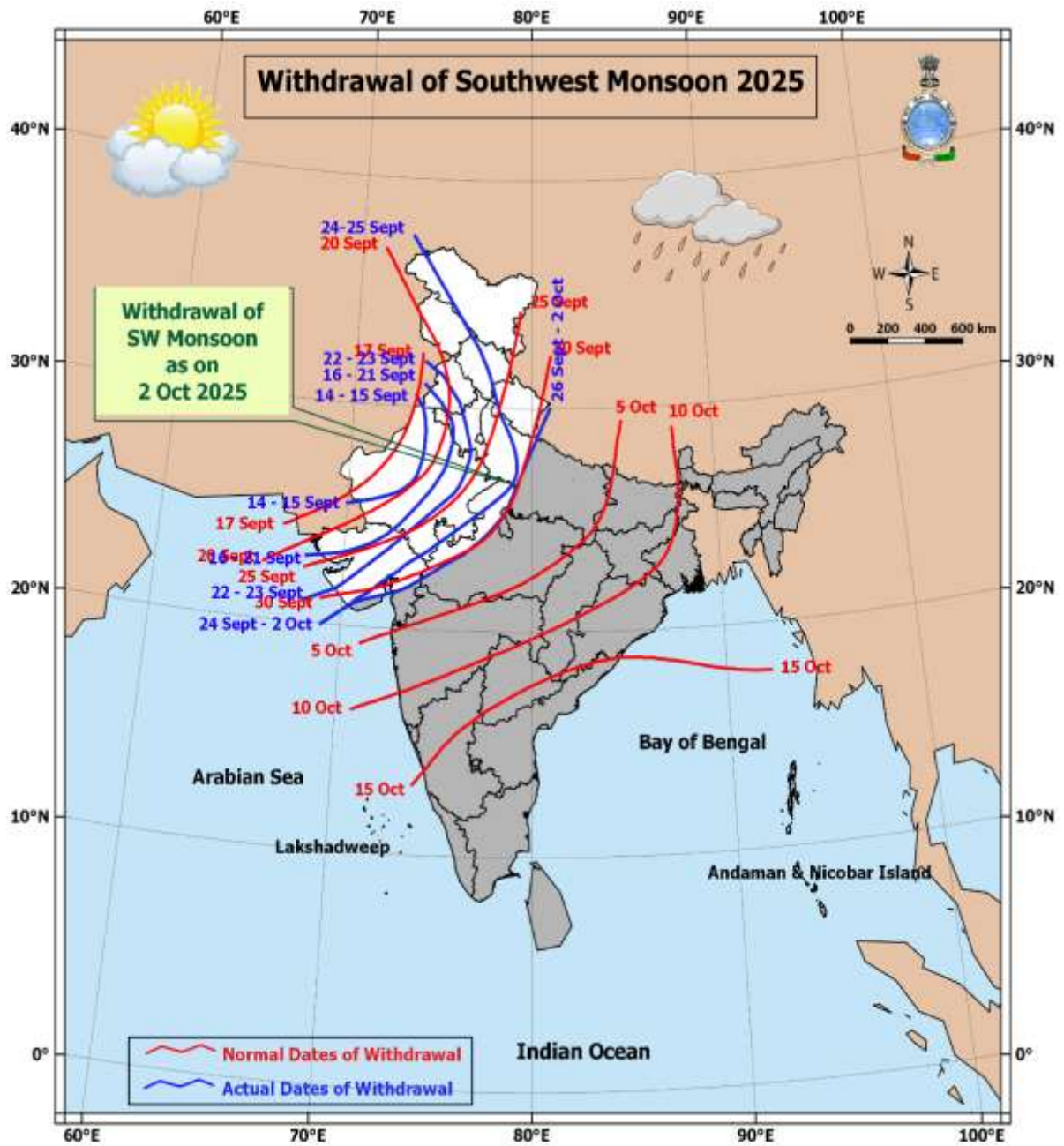
For District wise warnings refer: <https://mausam.imd.gov.in/responsive/districtWiseWarningGIS.php>

For Fishermen warning refer <https://rsmcnewdelhi.imd.gov.in/fishermen-warning.php>

ANNEXURE I

Rainfall recorded (in cm) during past 24 hours till 0830 hours IST of today, the 02nd October (≥ 7cm):

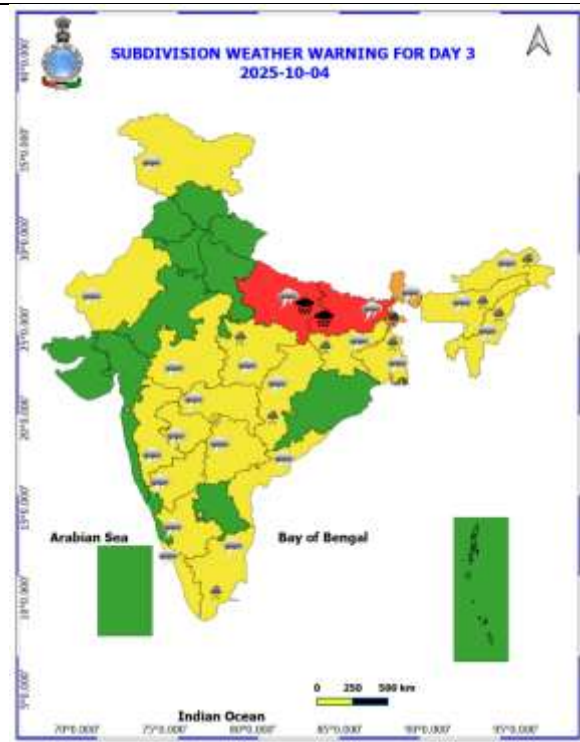
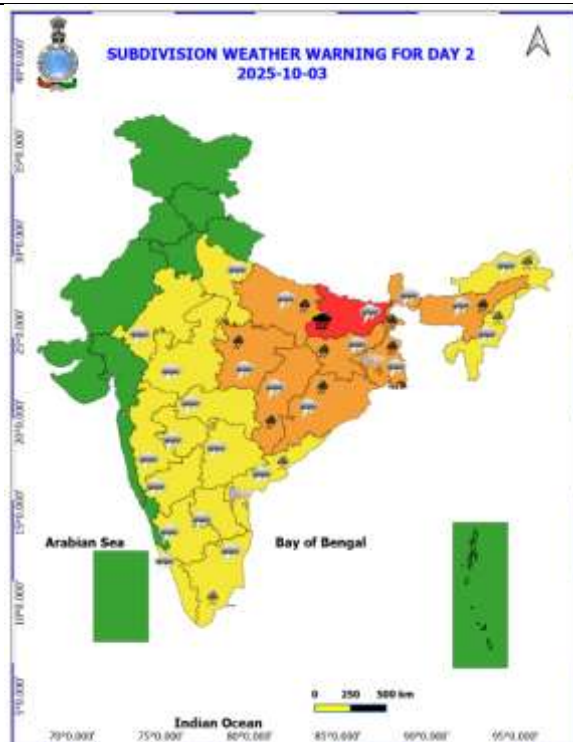
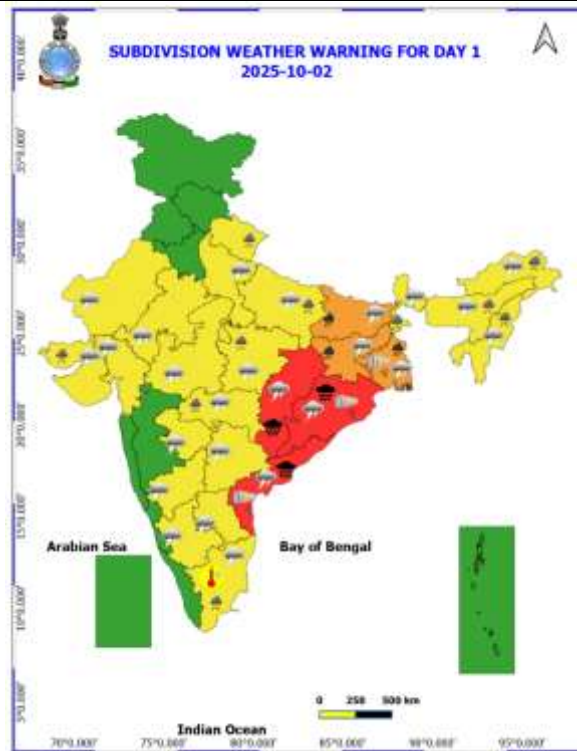
- ❖ **Jharkhand:** Rajdah(dist dhanbhad) 21, Nandadih (dist Giridih) 14, Karmatand (dist Jamtara) 14, Sikatia (dist Deoghar) 11, Giridih (dist Giridih) 11, Narayanpur (dist Jamtara) 10, Chandwa (dist Latehar) 9, Lohardaga Kvk Aws (dist Lohardaga) 9, Shilaichak (dist Chatra) 9, Zrs Dumka (dist Dumka) 8, Barkisuriya (dist Giridih) 8, Gobindpur Dvc (dist Dhanbad) 8, Jamtara (dist Jamtara) 7, Dumri (dist Giridih) 7, Jamtara Fmo (dist Jamtara) 7, Palganj (dist Giridih) 7,
- ❖ **Sub-Himalayan West Bengal & Sikkim:** Buxaduar (dist Alipurduar) 19, Chalouni Tea Estate (dist Jalpaiguri) 14, Rongo (dist Kalimpong) 13, Jhallong (dist Kalimpong) 11, Indong T.e. (dist Jalpaiguri) 9, Zurrantee T.e (dist Jalpaiguri) 8, Gopalpur Tea Estate (dist Alipurduar) 8, Subhasini Tea Estate (dist Alipurduar) 7, Hasimara (dist Alipurduar) 7, Soongachi T.e. (dist Jalpaiguri) 7, Patkapara Tea Estate (dist Alipurduar) 7,
- ❖ **Assam:** Hazo Arg (dist Kamrup (rural)) 13, Sualkuchi Arg (dist Kamrup (rural)) 7,
- ❖ **Bihar:** Barauni (dist Begusarai) 16, Bandra (dist Muzaffarpur) 13, Alauli (dist Khagaria) 13, Bathnaha (dist Sitamarhi) 13, Hayaghat (dist Darbhanga) 13, Warisnagar (dist Samastipur) 12, Barbiga (dist Sheikhpura) 11, Chhaurahi (dist Begusarai) 11, Khagadia (dist Khagaria) 11, Bakhari (dist Begusarai) 10, Cheria B.pur 1 (dist Begusarai) 10, Pusa (dist Samastipur) 10, Dumri (dist Sheohar) 9, Bhagwanpur (dist Vaishali) 9, Garhpura (dist Begusarai) 8, Sarairanjan (dist Samastipur) 8, Jainagar (dist Madhubani) 8, Bind (dist Nalanda) 8, Rahui (dist Nalanda) 8, Patori (dist Samastipur) 8, Pandarak (dist Patna) 8, Madhwapur (dist Madhubani) 7, Hasanpur (dist Samastipur) 7, Baitunthpur (dist Gopalganj) 7, Bhagwanpur (dist Begusarai) 7, Andhratharhi (dist Madhubani) 7, Kamtaul (dist Darbhanga) 7, Jaley (dist Darbhanga) 7, Rosera (dist Samastipur) 7, Basantpur (dist Siwan) 7, Dalsinghsarai (dist Samastipur) 7, Aryari (dist Sheikhpura) 7, Sonbarsa (dist Sitamarhi) 7, Ekangersarai (dist Nalanda) 7, Shivjinagar (dist Samastipur) 7, Vidyapati Nagar (dist Samastipur) 7,
- ❖ **Coastal Andhra Pradesh:** Madugula (dist. Anakapalli) 13,
- ❖ **East Uttar Pradesh:** Nichlaul (dist Maharajganj) 12, Bansgaon (dist Gorakhpur) 11, Dhanghata (dist Sant Kabir Nagar) 10, Gorakhpur (dist Gorakhpur) 9,
- ❖ **Odisha:** Bahanga (dist Balasore) 11, Balasore (dist Balasore) 9, Soro (dist Balasore) 9, Nilgiri (dist Balasore) 9, Bhograi (dist Balasore) 8, Krishnaprasad (dist Puri) 8, Nh5 Gobindpur (dist Balasore) 8, Hatadihi (dist Keonjhar) 7, Jajpur Pto (dist Jajpur) 7, Jajpur (dist Jajpur) 7,
- ❖ **East Madhya Pradesh:** Nowrozabad (dist Umari) 10, Budhar (dist Shahdol) 9, Pali (dist Umari) 8, Raipura (dist Panna) 7, Jabalpur-aws (dist Jabalpur) 7,
- ❖ **Tripura:** Sabroom (dist South Tripura) 10,
- ❖ **Gangetic West Bengal:** Digba (dist East Midnapore) 10, Sagar Island Pto (dist South 24 Parganas) 9, Basirhat (pt) (dist North 24 Parganas) 7, Contai (dist East Midnapore) 7,
- ❖ **Coastal Karnataka:** Yellapur (dist Uttara Kannada) 7,

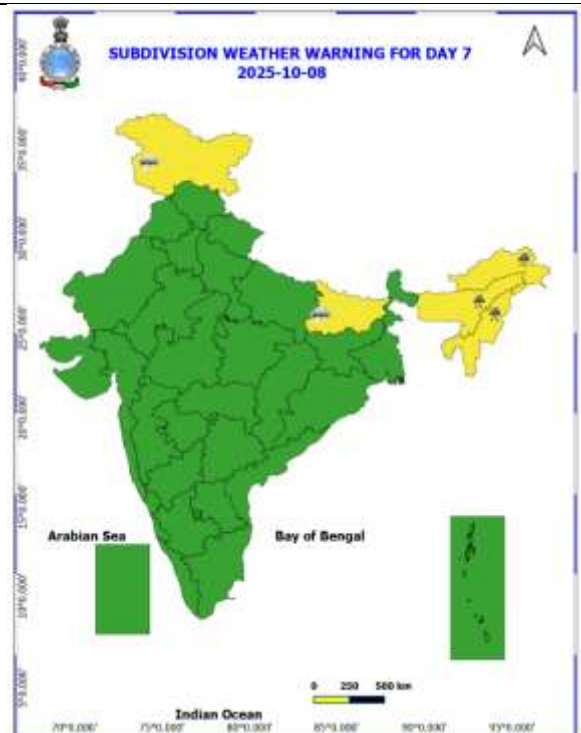
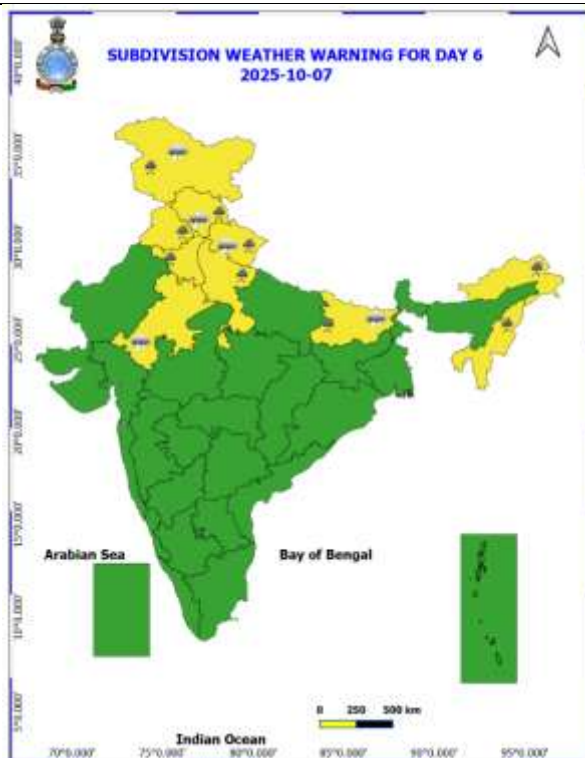
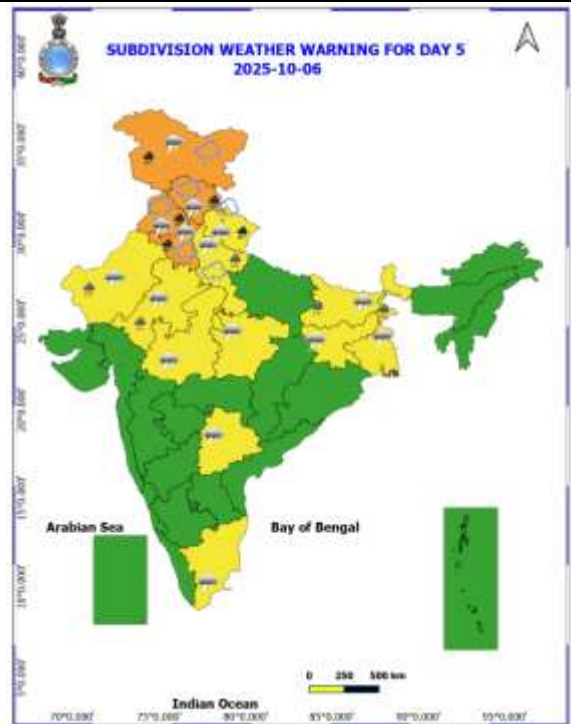
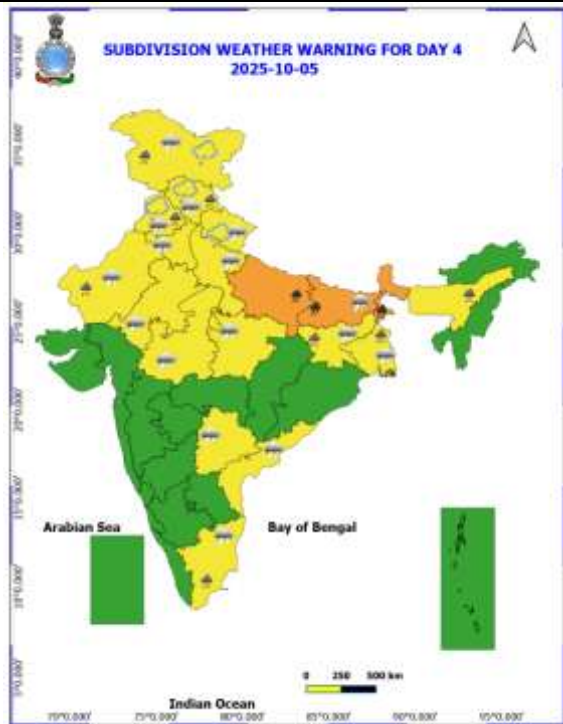


ANNEXURE III

Table-1								
7 Days Rainfall Forecast								
S.No.	Subdivision	2- Oct	3- Oct	4- Oct	5- Oct	6- Oct	7- Oct	8- Oct
		Day 1	Day 2	Day 3	Day 4	Day 5	Day 6	Day 7
1	ANDAMAN & NICOBAR ISLANDS	SCT	ISOL	ISOL	ISOL	ISOL	SCT	SCT
2	ARUNACHAL PRADESH	FWS	FWS	FWS	FWS	SCT	SCT	SCT
3	ASSAM & MEHGHALAYA	FWS	FWS	FWS	SCT	SCT	SCT	FWS
4	NAGALAND, MANIPUR, MIZORAM AND TRIPURA	FWS	FWS	FWS	SCT	SCT	SCT	SCT
5	SUB HIMALAYAN WEST BENGAL & SIKKIM	WS	WS	WS	WS	WS	FWS	FWS
6	GANGETIC WEST BENGAL	WS	WS	WS	FWS	FWS	SCT	SCT
7	ODISHA	WS	FWS	SCT	SCT	ISOL	ISOL	ISOL
8	JHARKHAND	WS	WS	WS	WS	FWS	SCT	SCT
9	BIHAR	WS	WS	WS	WS	FWS	SCT	SCT
10	EAST UTTAR PRADESH	SCT	FWS	WS	SCT	SCT	FWS	SCT
11	WEST UTTAR PRADESH	ISOL	SCT	ISOL	SCT	FWS	FWS	ISOL
12	UTTARAKHAND	SCT	SCT	SCT	FWS	WS	WS	FWS
13	HARYANA, CHANDIGARH & DELHI	ISOL	ISOL	ISOL	FWS	WS	FWS	ISOL
14	PUNJAB	ISOL	ISOL	ISOL	FWS	WS	FWS	ISOL
15	HIMACHAL PRADESH	ISOL	ISOL	ISOL	SCT	WS	FWS	SCT
16	JAMMU AND KASHMIR AND LADAKH	DRY	DRY	SCT	FWS	WS	WS	SCT
17	WEST RAJASTHAN	ISOL	ISOL	ISOL	SCT	SCT	ISOL	DRY
18	EAST RAJASTHAN	ISOL	ISOL	ISOL	ISOL	SCT	ISOL	DRY
19	WEST MADHYA PRADESH	SCT	FWS	FWS	FWS	SCT	SCT	SCT
20	EAST MADHYA PRADESH	FWS	WS	WS	FWS	FWS	FWS	SCT
21	GUJRAT REGION	FWS	SCT	SCT	FWS	WS	FWS	SCT
22	SAURASHTRA & KUTCH	WS	FWS	SCT	FWS	FWS	FWS	SCT
23	KONKAN & GOA	FWS	WS	WS	WS	FWS	FWS	SCT
24	MADHYA MAHARASHTRA	ISOL	SCT	SCT	ISOL	ISOL	ISOL	ISOL
25	MARATHWADA	ISOL	SCT	SCT	ISOL	ISOL	ISOL	ISOL
26	VIDARBHA	FWS	WS	FWS	FWS	SCT	SCT	ISOL
27	CHHATTISGARH	WS	WS	FWS	FWS	SCT	SCT	SCT
28	COASTAL ANDHRA PRADESH	FWS	SCT	SCT	SCT	ISOL	ISOL	ISOL
29	TELANGANA	SCT	SCT	SCT	ISOL	ISOL	ISOL	ISOL
30	RAYALASEEMA	SCT	ISOL	ISOL	ISOL	ISOL	ISOL	ISOL
31	TAMILNADU & PUDUCHERRY	ISOL	SCT	SCT	SCT	SCT	SCT	SCT
32	COSTAL KARNATAKA	WS	FWS	FWS	FWS	SCT	SCT	ISOL
33	NORTH INTERIOR KARNATAKA	SCT	FWS	FWS	SCT	ISOL	ISOL	ISOL
34	SOUTH INTERIOR KARNATAKA	FWS	FWS	FWS	SCT	ISOL	ISOL	ISOL
35	KERALA AND MAHE	FWS	FWS	FWS	SCT	SCT	SCT	SCT
36	LAKSHADWEEP	FWS	FWS	SCT	SCT	SCT	SCT	SCT

- As the lead period increases forecast accuracy decrease.





- Action may be taken based on ORANGE AND REDCOLOUR warnings.
- Vulnerable regions likely urban and hilly areas action may be initiated for heavy rainfall warning.
- As the lead period increases forecast accuracy decreases.

Detailed districtwise Multi Hazard weather warning for next five days available at
<https://mausam.imd.gov.in/responsive/districtWiseWarningGIS.php>

Weather forecast over Delhi/NCR during 02nd to 05th October 2025**Past Weather:**

There has been rise in the minimum temperature up to 1 - 3°C and fall in maximum temperature up to 1 - 2°C over Delhi/NCR during the past 24 hours. The maximum and minimum temperatures over Delhi were around 32 to 33°C and 24 to 26°C respectively. The minimum temperature was above normal up to 1 – 3°C and maximum temperature was below normal up to 1 – 3°C. Generally cloudy sky conditions with predominant surface wind from the southeast direction with wind speeds up to 12 kmph prevailed during the past 24 hours. Generally cloudy sky conditions with a wind speed of less than 10 kmph from the northeast direction prevailed over the region in the forenoon today.

Weather Forecast:

02.10.2025: Generally cloudy sky. A spell of very light to light rain accompanied with thunderstorm/lighting towards afternoon/evening. The maximum and minimum temperatures over Delhi are likely to be in the range of 33 to 35°C. The maximum temperature will be near normal. The predominant surface wind will likely to be from the southeast direction with a wind speed of up to 10-15 kmph during afternoon hours. The wind speed will decrease becoming less than 12 kmph from the southeast direction during the evening and night.

03.10.2025: Partly cloudy sky. The maximum and minimum temperatures over Delhi are likely to be in the range of 33 to 35°C and 24 to 26°C respectively. The minimum temperature will be above normal up to 1 – 2°C and the maximum temperature will be near normal. The predominant surface wind will likely to be from the southeast direction with a wind speed of up to 10-15 kmph during morning hours. The wind speed will gradually increase becoming less than 18 kmph from the east direction in the afternoon. The wind speed will decrease becoming less than 12 kmph from the east direction during the evening and night.

04.10.2025: Partly cloudy sky. The maximum and minimum temperatures over Delhi are likely to be in the range of 34 to 36°C and 24 to 26°C respectively. The minimum temperature will be above normal up to 1 – 2°C and the maximum temperature will be above normal up to 1 – 2°C. The predominant surface wind will likely to be from the east direction with a wind speed of up to 05-10 kmph during morning hours. The wind speed will gradually increase becoming less than 12 kmph from the east direction in the afternoon. The wind speed will increase becoming less than 15 kmph from the southeast direction during the evening and night.

05.10.2025: Partly cloudy sky. The maximum and minimum temperatures over Delhi are likely to be in the range of 34 to 36°C and 24 to 26°C respectively. The minimum temperature will be above normal up to 1 – 2°C and the maximum temperature will be above normal up to 1 – 2°C. The predominant surface wind will likely to be from the southeast direction with a wind speed of up to 10 - 15 kmph during morning hours. The wind speed will gradually decrease becoming less than 10 kmph from the southwest direction in the afternoon. The wind speed will increase becoming less than 20 kmph from the southeast direction during the evening and night.

Impact & Action Suggested due to

- ❖ **Isolated Extremely heavy rainfall (≥ 21 cm) likely over** Chhattisgarh, Odisha, Coastal Andhra Pradesh & Yanam on 02nd; Bihar on 03rd & 04th; East Uttar Pradesh on 04th October.
- ❖ **Very heavy rainfall over** Coastal Andhra Pradesh & Yanam on 02nd; Gangetic West Bengal, Odisha, Jharkhand and Chhattisgarh on 02nd & 03rd; East Madhya Pradesh on 03rd; East Uttar Pradesh, Sub-Himalayan West Bengal & Sikkim during 03rd-05th; Bihar during 02nd-05th; Assam & Meghalaya on 03rd; Jammu-Kashmir, Himachal Pradesh, Uttarakhand, Punjab, Haryana Chandigarh & Delhi on 06th October.

Impact Expected

- Water logging/ flooding in many parts of low lying area and river banks
- Localized and short term disruption to municipal services (water, electricity, etc.)
- Major disruption of traffic flow. Major roads/local trains affected.
- Possibility of danger to very old buildings and unmaintained structures, falling of trees etc
- Closure of roads crossing low water bridges.

Action Suggested

- Traffic may be regulated effectively
- People in the affected area may restrict their movement.

Agromet advisories for likely impact of Heavy / Heavy to Very Heavy / Extremely Heavy Rainfall

- In **Odisha**, ensure proper drainage of excess rain water from fields of rice, finger millet, maize, pulses, groundnut, cotton, sesame, vegetables and fruit orchards. Cover the vegetables nurseries like chilli, okra and brinjal with plastic cover or polythene sheet.
- In **Sub-Himalayan West Bengal**, undertake harvesting of matured crops of cardamom, chilli (dalley khorsani) and matured fruits of kiwi and shift the produce to safer places to avoid losses. Make necessary arrangements to drain out excess water from fields of rice, black gram, green gram, ginger, vegetables and fruit orchards to avoid water stagnation. In **Gangetic West Bengal**, ensure proper drainage from the fields of rice, groundnut, vegetables and betel vine gardens.
- In **Jharkhand**, drain out excess water from the fields of rice, maize, finger millet and pulse crops.
- In **Bihar**, make necessary arrangements to drain out excess water from fields of rice, maize and vegetables.
- In **East Uttar Pradesh**, harvest the matured maize crop immediately and keep the harvested produce at safer places to avoid losses. Make necessary arrangements to drain out excess water from the field of rice, maize and vegetables.
- In **Chhattisgarh**, provide adequate drainage facilities in fields of rice, pigeon pea, black gram, maize and soybean. Keep the harvested produce at safer places.
- In **East Madhya Pradesh**, keep the harvested produce of maize and soybean at safer places to avoid losses. Make necessary arrangements to drain out excess water from the fields of rice, soybean, maize and vegetables.
- In **Coastal Andhra Pradesh**, provide adequate drainage facilities in fields of rice, maize, pigeon pea, black gram, cotton, sugarcane, groundnut, turmeric, vegetables and plantations of coconut, arecanut, banana, coffee and black pepper.
- In **Arunachal Pradesh**, harvest matured crops such as rice, maize, vegetables and finger millet and shift the produce to properly covered shelter to avoid losses. Ensure proper drainage in already sown / transplanted field pea and cabbage.
- In **Assam**, ensure proper drainage of excess water from fields of *Sali* rice, black gram, green gram and vegetables. Avoid sowing of cabbage and transplanting of cauliflower during heavy rainfall.

Livestock / Fishery

- Keep the animals inside the shed during heavy rainfall and provide them balanced feed.
- Store feed and fodder in a safe place to prevent spoilage.
- Construct an outlet with proper netting around the ponds to drain out excess water, thereby preventing fish from escaping in case of overflow.

Agromet advisories for likely impact of Thunderstorm / Gusty Winds / Squally Winds

- Provide mechanical support to horticultural crops and staking or support to vegetables and young fruit plants / fruit-bearing plants to avoid lodging due to strong winds.

Legends & abbreviations:

- ❖ **Heavy Rain:** 64.5-115.5mm; **Very Heavy Rain:** 115.6-204.4mm; **Extremely Heavy Rain:** >204.4mm.
- ❖ **Obsy:** Observatory; Automatic Weather Station; **ARG:** Automatic Rain Gauge; **dist:** District; **NH:** National Highway; **KVK:** Krishi Vigyan Kendra; **DVC:** Damodar Valley Corporation; **PTO:** Part Time Office, **Aero:** Aerodrome, **IAF:** Indian Air Force.
- ❖ **Region wise classification of meteorological Sub-Divisions:**
 - **Northwest India:** Western Himalayan Region (Jammu-Kashmir-Ladakh-Gilgit-Baltistan-Muzaffarabad, Himachal Pradesh and Uttarakhand); Punjab, Haryana-Chandigarh-Delhi; West Uttar Pradesh, East Uttar Pradesh, West Rajasthan and East Rajasthan.
 - **Central India:** West Madhya Pradesh, East Madhya Pradesh, Vidarbha and Chhattisgarh.
 - **East India:** Bihar, Jharkhand, Sub-Himalayan West Bengal & Sikkim; Gangetic West Bengal, Odisha and Andaman & Nicobar Islands.
 - **Northeast India:** Arunachal Pradesh, Assam & Meghalaya and Nagaland, Manipur, Mizoram & Tripura.
 - **West India:** Gujarat Region, Saurashtra & Kutch, Konkan & Goa, Madhya Maharashtra and Marathwada.
 - **South India:** Coastal Andhra Pradesh & Yanam, Telangana, Rayalaseema, Coastal Karnataka, North Interior Karnataka, South Interior Karnataka, Kerala & Mahe, Tamil Nadu, Puducherry & Karaikal and Lakshadweep.

LEGENDS

1. अंडमान और निकोबार द्वीपसमूह

2. अरुणाचल प्रदेश

3. असम और मेघालय

4. नागालैंड, मणिपुर, मिजोरम और त्रिपुरा

5. उप-हिमालयी पश्चिम बंगाल और सिक्किम

6. गंगीय पश्चिम बंगाल

7. ओडिशा

8. झारखंड

9. बिहार

10. पूर्वी उत्तर प्रदेश

11. पश्चिम उत्तर प्रदेश

12. उत्तराखंड

13. हरियाणा, चंडीगढ़ और दिल्ली

14. पंजाब

15. हिमाचल प्रदेश

16. जम्मू और कश्मीर और लद्दाख

17. पश्चिम राजस्थान

18. पूर्वी राजस्थान

19. पश्चिम मध्य प्रदेश

20. पूर्वी मध्य प्रदेश

21. गुजरात

22. सौराष्ट्र

23. कोंकण और गोवा

24. मध्य महाराष्ट्र

25. मराठवाड़ा

26. विदर्भ

27. छत्तीसगढ़

28. तटीय आंध्र प्रदेश और यनम

29. तेलंगाना

30. रायलसीमा

31. तमिलनाडु, पुडुचेरी और कराईकल

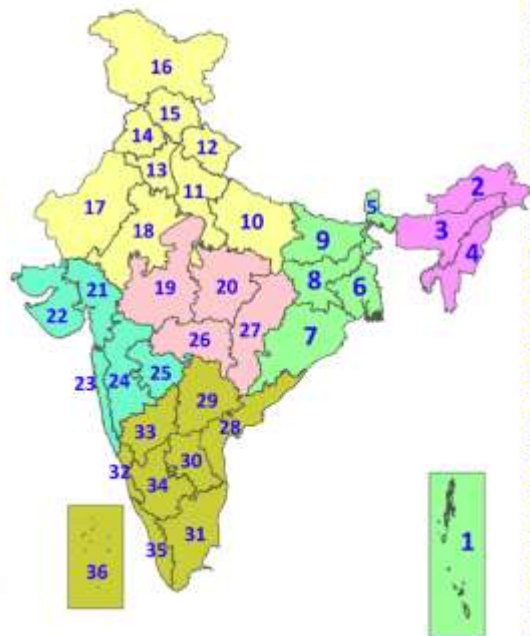
32. तटीय कर्नाटक

33. आंतरिक उत्तरी कर्नाटक

34. आंतरिक दक्षिणी कर्नाटक

35. केरल और माहे

36. लक्षद्वीप



1. Andaman & Nicobar Islands

2. Arunachal Pradesh

3. Assam & Meghalaya

4. Nagaland, Manipur, Mizoram & Tripura

5. Sub-Himalayan West Bengal & Sikkim

6. Gangetic West Bengal

7. Odisha

8. Jharkhand

9. Bihar

10. East Uttar Pradesh

11. West Uttar Pradesh

12. Uttarakhand

13. Haryana, Chandigarh & Delhi

14. Punjab

15. Himachal Pradesh

16. Jammu & Kashmir and Ladakh

17. West Rajasthan

18. East Rajasthan

19. West Madhya Pradesh

20. East Madhya Pradesh

21. Gujarat

22. Saurashtra

23. Konkan & Goa

24. Madhya Maharashtra

25. Marathwada

26. Vidarbha

27. Chhattisgarh

28. Coastal Andhra Pradesh & Yanam

29. Telangana

30. Rayalaseema

31. Tamilnadu, Puducherry & Karaikal

32. Coastal Karnataka

33. North Interior Karnataka

34. South Interior Karnataka

35. Kerala & Mahe

36. Lakshadweep

SPATIAL DISTRIBUTION (% of Stations reporting)

% Stations	Category	% Stations	Category
76-100	Widespread (WS/Most Places)	26-50	Scattered (SCT/A Few Places)
51-75	Fairly Widespread (FWS/Many Places)	1-25	Isolated (ISOL)



Fog



Heavy Snow



Cold Wave



Heavy Rain



Dust Storm



Cold Day



Very Heavy Rain



Heat Wave



Ground Frost



Extremely Heavy Rain



Warm Night



Thunder & Lightning



Hot Day



Hailstorm



Hot & Humid



Dust Raising Winds



Strong Surface Winds

COLOUR CODED WARNING

No Warning (No Action)

Watch (Be Aware)

Alert (Be Prepared To Take Action)

Warning (Take Action)

Probabilistic Forecast

Terms	Probability of Occurrence (%)
Unlikely	< 25
Likely	25 - 50
Very Likely	50 - 75
Most Likely	> 75

* Red colour warning does not mean "Red Alert", Red colour warning means "Take Action".

Forecast and Warning for any day is valid from 0830 hours IST of day till 0830 hours IST of next day.

For more details, kindly visit <https://mausam.imd.gov.in> or contact: 011-2434-4599

(Service to the Nation since 1875)

DEFINITION/CRITERIA

Rain/ Snow *

Heavy: 64.5 to 115.5 mm/cm *
Very Heavy: 115.6 to 204.4 mm/cm *
Extremely Heavy: > 204.4 mm/cm *

Heat Wave

When maximum temperature of a station reaches $\geq 40^{\circ}\text{C}$ for plains and $\geq 30^{\circ}\text{C}$ for hilly regions
(a) Based on Departure from normal

Heat Wave: Maximum Temperature Departure from normal 4.5°C to 6.4°C .

Severe Heat Wave: Maximum Temperature Departure from normal $\geq 6.5^{\circ}\text{C}$

(b). Based on Actual maximum temperature

Heat Wave: When actual maximum temperature $\geq 45^{\circ}\text{C}$.

Severe Heat Wave: When actual maximum temperature $\geq 47^{\circ}\text{C}$.

(c). Criteria for heat wave for coastal stations

When maximum temperature departure is $> 4.5^{\circ}\text{C}$ from normal. Heat Wave may be described provided maximum temperature $\geq 37^{\circ}\text{C}$.

Warm Night

When maximum temperature remains 40°C

Warm Night: When minimum temperature departure 4.5°C to 6.4°C .

Severe Warm Night: When minimum temperature departure $> 6.4^{\circ}\text{C}$.

Cold Wave

When minimum temperature of a station $\leq 10^{\circ}\text{C}$ for plains and $\leq 0^{\circ}\text{C}$ for hilly regions.

(a). Based on departure

Cold Wave: Minimum Temperature Departure from normal -4.5°C to -6.4°C .

Severe Cold Wave: Minimum Temperature Departure from normal $\leq -6.5^{\circ}\text{C}$

(b) Based on actual Minimum Temperature (for Plains only)

Cold Wave: When Minimum Temperature is $\leq 4.0^{\circ}\text{C}$

Severe Cold Wave: When Minimum Temperature is $\leq 2.0^{\circ}\text{C}$

(c) For Coastal Stations

When Minimum Temperature departure is $\leq -4.5^{\circ}\text{C}$ & actual Minimum Temperature is $\leq 15^{\circ}\text{C}$

Cold Day

When minimum temperature of a station $\leq 10^{\circ}\text{C}$ for plains and $\leq 0^{\circ}\text{C}$ for hilly regions

Based on departure

Cold Day: Maximum Temperature Departure from normal -4.5°C to -6.4°C .

Severe Cold Day: Maximum Temperature Departure from normal $\leq -6.5^{\circ}\text{C}$

Fog

Phenomenon of small droplets suspended in air and the horizontal visibility $< 1\text{km}$

Moderate Fog: When the visibility between 500-200 metres

Dense Fog: when the visibility between 50- 200 metres

Very Dense Fog: when the visibility < 50 metres

Thunderstorm

Sudden electrical discharges manifested by a flash of light (Lightning) and a sharp rumbling sound (thunder)

Dust/Sand Storm

An ensemble of particles of dust or sand energetically lifted to great heights by a strong and turbulent wind.

Frost

Ice deposits on ground

Air temperature $\leq 4^{\circ}\text{C}$ (over Plains)

Squall

A strong wind that rises suddenly, lasts for atleast 1 minute.

Moderate: Wind speed 52-61 kmph

Severe: Wind speed 62-67 kmph

Very Severe: Wind speed > 67 kmph

Sea State

Effect of various waves in the sea over specific area

Rough to very rough: Wind speed 41-62 kmph (22-33 knots) & Wave height 2.5-6 metre

High to very high: Wind speed 63-117 kmph (34-63 knots) & Wave height 6-14 metre

Phenomenal: Wind speed > 117 kmph (> 63 knots) & Wave height > 14 metre

Cyclone

Cyclonic Storm: Wind speed 62-87 kmph (34-47 knots)

Severe Cyclonic Storm: Wind speed 88-117 kmph (48-63 knots)

Very Severe Cyclonic Storm: Wind speed 118-165 kmph (64 - 89 knots)

Extremely Severe Cyclonic Storm: Wind speed 166-220 kmph (90 -119 knots)

Super Cyclone Storm: Wind speed > 220 kmph (> 119 knots)

* Red colour warning does not mean "Red Alert", Red colour warning means "Take Action".

Forecast and Warning for any day is valid from 0830 hours IST of day till 0830 hours IST of next day.

For more details, kindly visit <https://mausam.imd.gov.in> or contact: 011-2434-4599

(Service to the Nation since 1875)