



Government of India
Ministry of Earth Sciences
India Meteorological Department



Press Release
Date: 08th October, 2025
Time of Issue: 1315 hours IST

Subject: (i) Increase in rainfall activity with isolated heavy falls likely over South Peninsular India for next 4-5 days.

(ii) Conditions are favourable for further withdrawal of southwest monsoon from remaining parts of Gujarat, some more parts of Madhya Pradesh and Uttar Pradesh and some parts of Maharashtra during next 2-3 days.

Realised weather during past 24 hours till 0830 hours IST of today, the 08th October, 2025:

- ❖ Heavy to very heavy rainfall (7-20 cm) has been recorded at isolated places over Himachal Pradesh
 - ❖ Heavy rainfall (7-11 cm) has been recorded at isolated places over Saurashtra & Kutch, Coastal Andhra Pradesh & Yanam, Punjab, Uttar Pradesh, Odisha, Telangana
- For more details of realised weather, kindly refer [Annexure I](#).

Withdrawal of southwest Monsoon:

- ❖ The line of withdrawal of southwest monsoon continues to pass through 20°N/ 69°E, Veraval, Bharuch, Ujjain, Jhansi, Shahjahanpur and 30°N/81°E. ([Annexure II](#)).
- ❖ Conditions are favourable for further withdrawal of southwest monsoon from remaining parts of Gujarat; some more parts of Madhya Pradesh and Uttar Pradesh and some parts of Maharashtra during next 2-3 days.

i. Weather Systems, Forecast and Warnings (refer to Annexure III & IV):

- ❖ Yesterday's Depression (Remnant of Cyclonic Storm "**Shakhti**") [Pronunciation: Shakhti]) over westcentral and adjoining northwest Arabian Sea moved east-southeastwards and weakened into a **well marked low pressure** area at 1730 IST of yesterday, the 7th October 2025 over Westcentral Arabian Sea. It is likely to continue to move east-southeastwards over westcentral Arabian Sea and weaken further into a low pressure area during next 12 hours.
- ❖ The **Western Disturbance** as an **induced low-pressure area** now lies as an upper air cyclonic circulation over east Haryana & neighbourhood in lower tropospheric levels with a trough aloft in middle tropospheric levels roughly along Long. 77°E to the north of Lat. 28°N.
- ❖ An **upper air cyclonic circulation** lay over south Bangladesh & neighbourhood and another over central Assam & neighbourhood in lower tropospheric levels.
- ❖ A **trough** runs from south Chhattisgarh to Gulf to Mannar in lower tropospheric levels.
- ❖ An **upper air cyclonic circulation** lies over Comorin area & neighbourhood in lower tropospheric levels.
- ❖ An **upper air cyclonic circulation** is likely to form over north Bay of Bengal around 10th October, 2025.

Under the influence of these systems, the following weather is likely:

South Peninsular India:

- ❖ Light to moderate rain/thunderstorm at many/some places with isolated **heavy rainfall** likely over Tamil Nadu, Kerala & Mahe during 08th-12th; South Interior Karnataka, Coastal Andhra Pradesh & Yanam during 8th – 10th; Rayalaseema on 09th & 10th; Telangana on 08th; Coastal Karnataka on 10th October.

- ❖ **Thunderstorm with gusty wind (speed reaching 30-40 kmph)** likely over Tamil Nadu, Kerala & Mahe and Telangana during next 5 days; North Interior Karnataka on 08th; Lakshadweep and Coastal Karnataka during next 2-3 days; **with lightning** over Coastal Andhra Pradesh & Yanam during next 5 days; Rayalaseema during 08th – 10th October.

Northwest India:

- ❖ Isolated to scattered rainfall accompanied with thunderstorm, lightning & gusty wind (speed reaching 30-40 kmph) very likely over Uttarakhand on 08th October.

East India:

- ❖ Light to moderate rain/thunderstorm at some/ isolated places with isolated heavy rainfall likely over Gangetic West Bengal during 08th -10th, Sub-Himalayan West Bengal & Sikkim on 08th; Odisha during 09th – 11th October.

Northeast India:

- ❖ Light/moderate rain/thunderstorm at some/isolated places with isolated **heavy rainfall** likely over Assam & Meghalaya, Nagaland, Manipur, Mizoram & Tripura during 08th-10th; Arunachal Pradesh on 10th October.

Fishermen warnings:

Fishermen are advised not to venture into the following areas during 08th October to 13th October:

Arabian Sea:

- Along and off Kerala, Lakshadweep Area and some parts of westcentral adjoining northwest Arabian Sea during 08th to 10th October; and along and off Karnataka coasts on 9th October.

Bay of Bengal:

- Gulf of Mannar & adjoining Comorin area during 08th October to 13th October.

ii. Weather conditions and forecast over Delhi/NCR during 08th to 11th October, 2025 (Annexure V)

For more details, kindly refer National Weather Bulletin:

https://mausam.imd.gov.in/responsive/all_india_forecast_bulletin.php

For District wise warnings refer: <https://mausam.imd.gov.in/responsive/districtWiseWarningGIS.php>

For Fishermen warning refer <https://rsmcnewdelhi.imd.gov.in/fishermen-warning.php>

ANNEXURE I

Rainfall recorded (in cm) during past 24 hours till 0830 hours IST of today, the 08th October (≥ 7cm):

Himachal Pradesh: Naina Davi (dist Bilaspur) 13; Solan (dist Solan) 12; Pachhad (dist Sirmaur), Barthin (dist Bilaspur) 8 Each; Kasauli (dist Solan) 7;

Odisha: Aul (dist Kendrapara) 10; Champua (dist Keonjhar) 8;

East Uttar Pradesh: Banda (dist Banda) 9;

Punjab: Kotla (dist Rupnagar) 8; Bharatgarh (dist Rupnagar), Ganguwal (dist Rupnagar), Ghanauli (dist Rupnagar), Lohand (dist Rupnagar) 7 Each;

Telangana: Choutuppal(ARG) (dist Y. Bhuvanagiri) 7;

Coastal Andhra Pradesh & Yanam: Cheepurupalle (dist Vizianagaram) 7;

West Uttar Pradesh: Aligarh (dist Aligarh) 7.

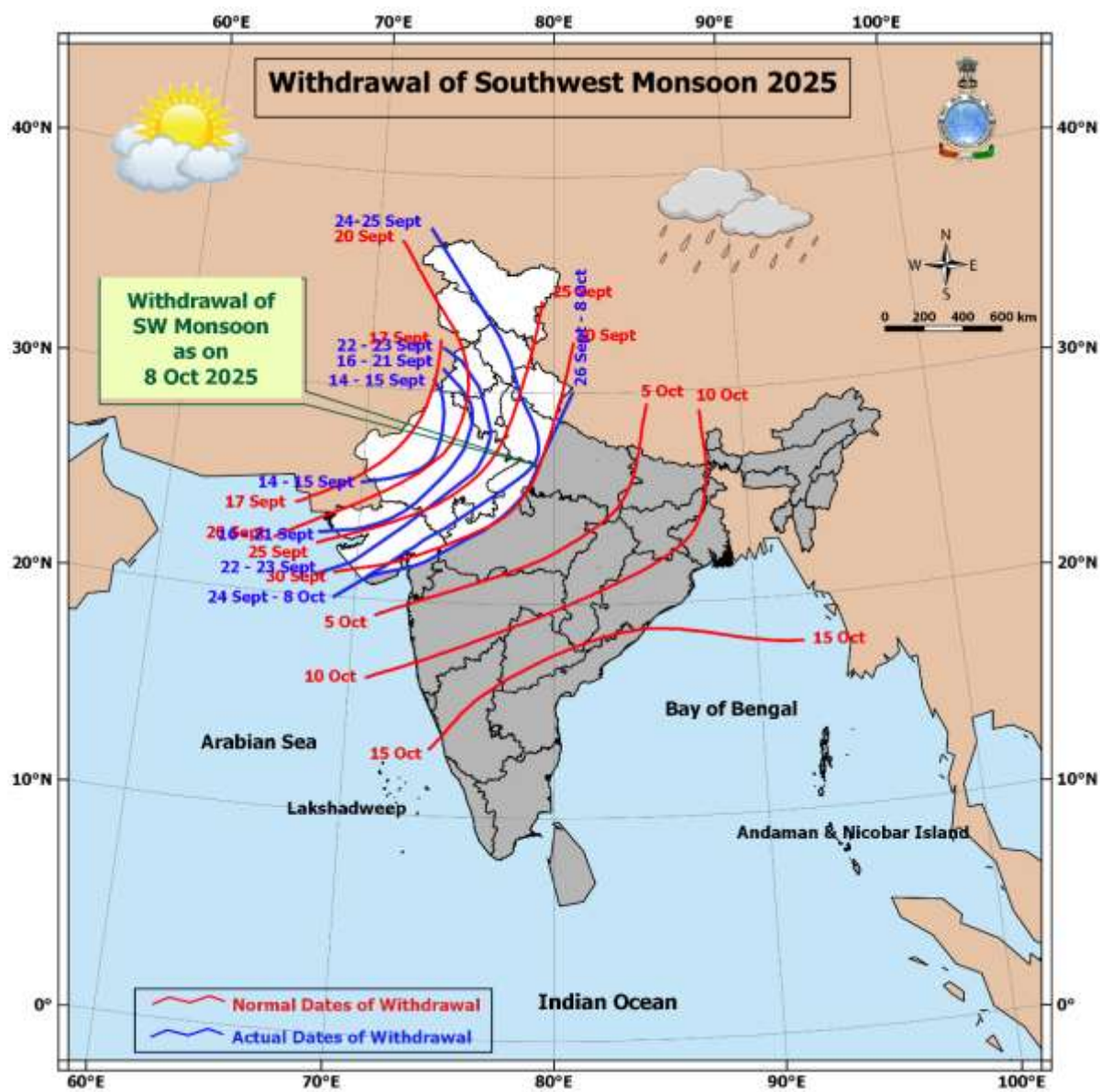
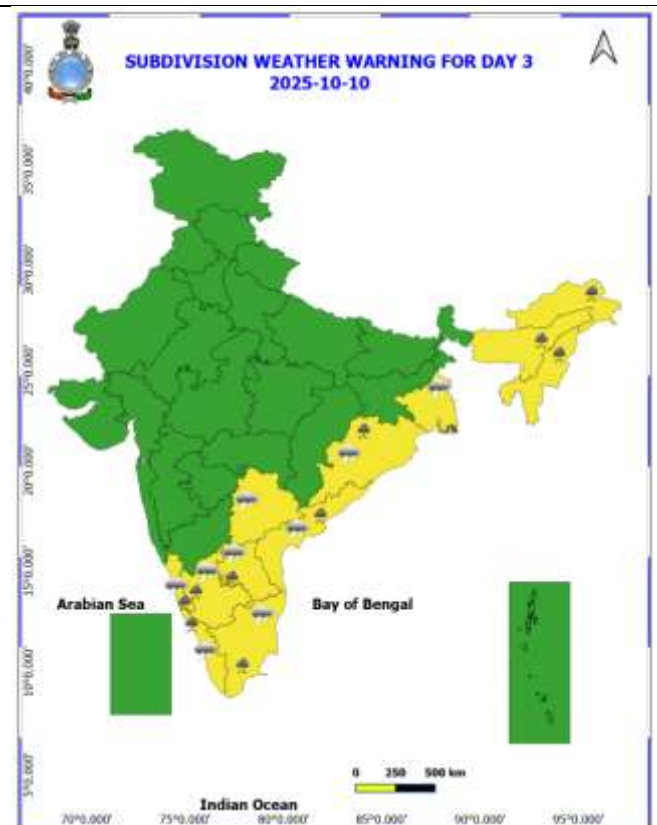
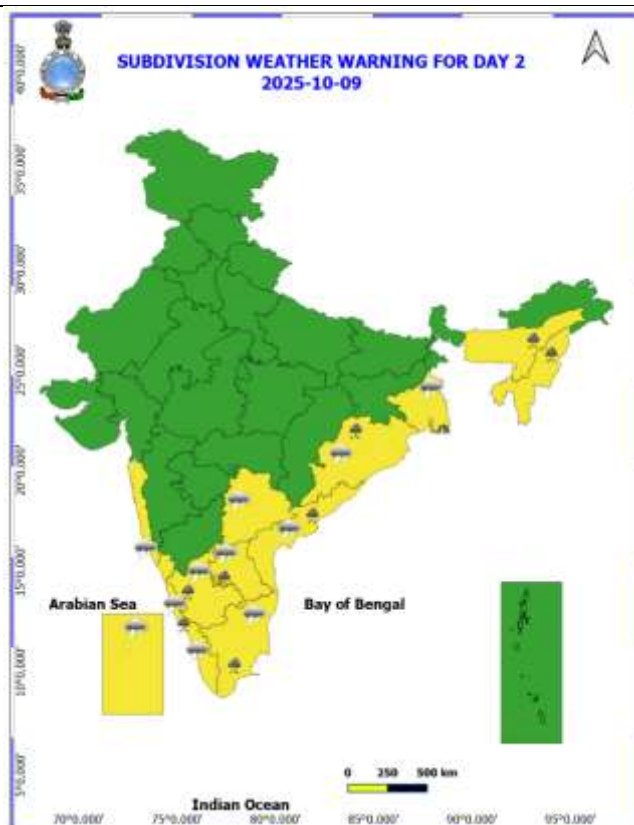
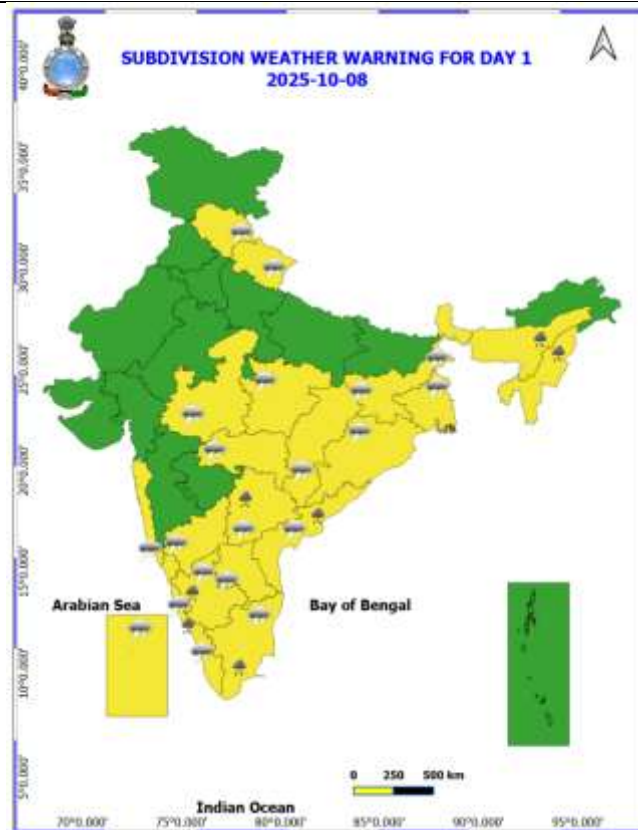
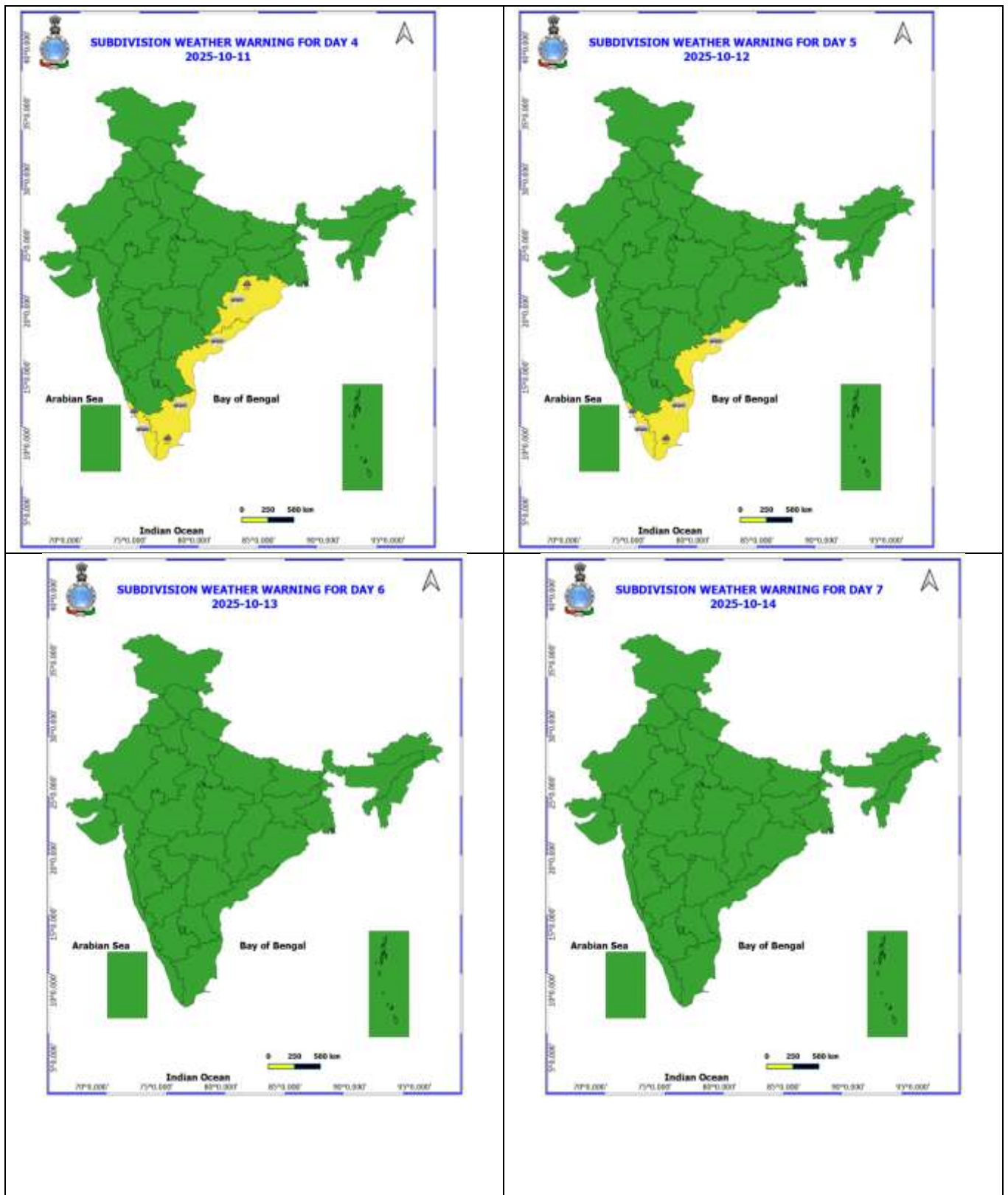


Table-1								
7 Days Rainfall Forecast								
S.No.	Subdivision	8- Oct	9- Oct	10- Oct	11- Oct	12- Oct	13- Oct	14- Oct
		Day 1	Day 2	Day 3	Day 4	Day 5	Day 6	Day 7
1	ANDAMAN & NICOBAR ISLANDS	FWS	FWS	FWS	FWS	FWS	SCT	SCT
2	ARUNACHAL PRADESH	SCT	SCT	SCT	SCT	ISOL	ISOL	ISOL
3	ASSAM & MEHGHALAYA	SCT	SCT	SCT	SCT	ISOL	ISOL	ISOL
4	NAGALAND, MANIPUR, MIZORAM AND TRIPURA	SCT	SCT	SCT	SCT	ISOL	ISOL	ISOL
5	SUB HIMALAYAN WEST BENGAL & SIKKIM	SCT	ISOL	ISOL	ISOL	ISOL	ISOL	ISOL
6	GANGETIC WEST BENGAL	SCT	SCT	SCT	SCT	ISOL	ISOL	ISOL
7	ODISHA	SCT	SCT	SCT	SCT	ISOL	ISOL	ISOL
8	JHARKHAND	ISOL	ISOL	ISOL	DRY	DRY	DRY	DRY
9	BIHAR	ISOL	ISOL	ISOL	DRY	DRY	DRY	DRY
10	EAST UTTAR PRADESH	ISOL	ISOL	DRY	DRY	DRY	DRY	DRY
11	WEST UTTAR PRADESH	ISOL	DRY	DRY	DRY	DRY	DRY	DRY
12	UTTARAKHAND	SCT	ISOL	ISOL	DRY	DRY	DRY	DRY
13	HARYANA, CHANDIGARH & DELHI	ISOL	DRY	DRY	DRY	DRY	DRY	DRY
14	PUNJAB	ISOL	DRY	DRY	DRY	DRY	DRY	DRY
15	HIMACHAL PRADESH	SCT	ISOL	ISOL	DRY	DRY	DRY	DRY
16	JAMMU AND KASHMIR AND LADAKH	ISOL	DRY	DRY	DRY	DRY	DRY	DRY
17	WEST RAJASTHAN	DRY	DRY	DRY	DRY	DRY	DRY	DRY
18	EAST RAJASTHAN	DRY	DRY	DRY	DRY	DRY	DRY	DRY
19	WEST MADHYA PRADESH	ISOL	ISOL	DRY	DRY	DRY	DRY	DRY
20	EAST MADHYA PRADESH	ISOL	ISOL	ISOL	DRY	DRY	DRY	DRY
21	GUJRAT REGION	ISOL	ISOL	ISOL	ISOL	DRY	DRY	DRY
22	SAURASHTRA & KUTCH	ISOL	ISOL	ISOL	DRY	DRY	DRY	DRY
23	KONKAN & GOA	SCT	SCT	ISOL	ISOL	ISOL	ISOL	ISOL
24	MADHYA MAHARASHTRA	ISOL	ISOL	ISOL	ISOL	ISOL	ISOL	ISOL
25	MARATHWADA	ISOL	ISOL	ISOL	ISOL	ISOL	ISOL	ISOL
26	VIDARBHA	ISOL	ISOL	ISOL	DRY	DRY	DRY	DRY
27	CHHATTISGARH	SCT	ISOL	ISOL	ISOL	ISOL	ISOL	ISOL
28	COASTAL ANDHRA PRADESH	SCT	SCT	SCT	ISOL	ISOL	SCT	SCT
29	TELANGANA	SCT	ISOL	ISOL	ISOL	ISOL	ISOL	ISOL
30	RAYALASEEMA	SCT	SCT	SCT	ISOL	ISOL	ISOL	ISOL
31	TAMILNADU & PUDUCHERRY	FWS	SCT	SCT	SCT	SCT	SCT	SCT
32	COSTAL KARNATAKA	SCT	SCT	SCT	SCT	ISOL	ISOL	DRY
33	NORTH INTERIOR KARNATAKA	ISOL	ISOL	ISOL	DRY	DRY	DRY	DRY
34	SOUTH INTERIOR KARNATAKA	SCT	FWS	SCT	SCT	ISOL	ISOL	ISOL
35	KERALA AND MAHE	FWS	FWS	FWS	FWS	FWS	FWS	FWS
36	LAKSHADWEEP	FWS	FWS	FWS	SCT	SCT	SCT	SCT

- As the lead period increases forecast accuracy decrease.





- Action may be taken based on ORANGE AND REDCOLOUR warnings.
- Vulnerable regions likely urban and hilly areas action may be initiated for heavy rainfall warning.
- As the lead period increases forecast accuracy decreases.

Detailed districtwise MultiHazard weather warning for next five days available at <https://mausam.imd.gov.in/responsive/districtWiseWarningGIS.php>

Weather forecast over Delhi/NCR during 08th to 11th October 2025

Past Weather:

There has been no large change in the minimum temperature and rise in maximum temperature up to 1 – 3°C over Delhi/NCR during the past 24 hours. The maximum and minimum temperatures over Delhi were around 28 to 30°C and 17 to 20°C respectively. The minimum temperature was below normal up to 2 – 4°C and maximum temperature was below normal up to 4 – 6°C. Generally cloudy sky conditions with predominant surface wind from the southeast direction with wind speeds up to 20 kmph gusting to 45 kmph prevailed during the past 24 hours. Light to moderate rain with thunderstorms/lightning at most places has been recorded in Delhi. Generally cloudy sky conditions with a wind speed of less than 12 kmph from the west-southwest direction prevailed over the region in the forenoon today.

Weather Forecast:

08.10.2025: Generally cloudy sky becoming partly cloudy sky. The maximum and minimum temperatures over Delhi are likely to be in the range of 27 to 29°C. The maximum temperature will be below normal up to 3 – 5°C. The predominant surface wind will likely to be from the northwest direction with a wind speed of up to 10 -15 kmph during afternoon hours. The wind speed will decrease becoming less than 12 kmph from the northwest direction during the evening and night.

09.10.2025: Mainly clear sky. The maximum and minimum temperatures over Delhi are likely to be in the range of 31 to 33°C and 19 to 21°C respectively. The minimum temperature will be below normal up to 1 – 2°C and the maximum temperature will be below normal up to 1 – 3°C. The predominant surface wind will likely to be from the northwest direction with a wind speed of up to 05-10 kmph during morning hours. The wind speed will gradually increase becoming less than 15 kmph from the northwest direction in the afternoon. The wind speed will decrease becoming less than 12 kmph from the northwest direction during the evening and night.

10.10.2025: Mainly clear sky. The maximum and minimum temperatures over Delhi are likely to be in the range of 31 to 33°C and 19 to 21°C respectively. The minimum temperature will be below normal up to 1 – 2°C and the maximum temperature will be below normal up to 1 – 3°C. The predominant surface wind will likely to be from the northwest direction with a wind speed of up to 05-10 kmph during morning hours. The wind speed will increase becoming less than 15 kmph from the northwest direction in the afternoon. The wind speed will gradually decrease becoming less than 10 kmph from the north direction during the evening and night.

11.10.2025: Mainly clear sky. The maximum and minimum temperatures over Delhi are likely to be in the range of 32 to 34°C and 20 to 22°C respectively. The minimum temperature will be below normal up to 1 – 2°C and the maximum temperature will be below normal up to 1 – 2°C. The predominant surface wind will likely to be from the northwest direction with a wind speed of up to 05 - 10 kmph during morning hours. The wind speed will increase becoming less than 15 kmph from the northwest direction in the afternoon. The wind speed will gradually decrease becoming less than 12 kmph from the north direction during the evening and night.

Agromet advisories for likely impact of Heavy Rainfall

- In **Tamil Nadu**, harvest matured crops of rice and groundnut and shift the harvested produce to safer places. Provide adequate drainage facilities in fields of rice, cotton, turmeric and vegetables and plantations of coconut and banana to avoid water stagnation.
- In **Kerala**, make provision to drain out excess water from fields of rice and plantations of banana, coconut, arecanut and black pepper.
- In **South Interior Karnataka**, harvest matured crops of groundnut and maize and store the produce in safer places. Shift the harvested produce of pepper, cardamom, turmeric and coffee to dry, covered and ventilated areas or cover with tarpaulins in the fields. Ensure proper drainage in fields of rice, maize, finger millet, pigeon pea, soybean, groundnut and vegetables and plantations of banana, black pepper, coconut and arecanut to avoid waterlogging.
- In **Coastal Andhra Pradesh**, harvest the matured fruits and vegetables. Provide adequate drainage facilities in fields of rice, maize, pigeon pea, black gram, green gram, groundnut, turmeric, vegetables and plantations of coconut, arecanut, banana, coffee and black pepper.

- In **Rayalseema**, harvest matured fruits and vegetables and store in safer places. Make provision to drain out excess water from fields of rice, groundnut, cotton, turmeric and vegetables.
- In **Coastal Karnataka**, make necessary arrangements to drain out excess water from fields of rice and plantations of coconut and arecanut.
- In **Assam**, harvest all the matured vegetables (tomato, cucumber, brinjal etc). Ensure proper drainage of excess water from fields of *Sali* rice, black gram, green gram and vegetables.
- In **Meghalaya**, make necessary arrangements to drain out excess water from fields of standing crops, vegetables and fruit orchards.
- In **Odisha**, ensure proper drainage in fields of rice, maize, green gram, black gram, groundnut, cotton and vegetables to prevent waterlogging.
- In **Himachal Pradesh**, drain out excess water from fields of rice, maize, kidney beans, finger millet, vegetables and fruit orchards.
- In **Punjab**, drain out excess water from fields of rice, maize, cotton and vegetables.
- In **Uttar Pradesh**, drain out excess water from fields of rice, maize, green gram, sugarcane, groundnut and vegetables.

Livestock / Fishery

- Keep the animals inside the shed during heavy rainfall and provide them balanced feed.
- Store feed and fodder in a safe place to prevent spoilage.
- Construct an outlet with proper netting around the ponds to drain out excess water, thereby preventing fish from escaping in case of overflow.

Agromet advisories for likely impact of Thunderstorm / Gusty Winds / Squally Winds

- Provide mechanical support to horticultural crops and staking or support to vegetables and young fruit plants / fruit-bearing plants to avoid lodging due to strong winds.

Legends & abbreviations:

- ❖ **Heavy Rain:**64.5-115.5mm; **Very Heavy Rain:**115.6-204.4mm; **Extremely Heavy Rain:** >204.4mm.
- ❖ **Obsy:** Observatory; Automatic Weather Station; **ARG:** Automatic Rain Gauge; **dist:** District; **NH:** National Highway; **KVK:** Krishi Vigyan Kendra; **DVC:** Damodar Valley Corporation; **PTO:** Part Time Office, **Aero:** Aerodrome, **IAF:** Indian Air Force.
- ❖ **Region wise classification of meteorological Sub-Divisions:**
 - **Northwest India:** Western Himalayan Region (Jammu-Kashmir-Ladakh-Gilgit-Baltistan-Muzaffarabad, Himachal Pradesh and Uttarakhand); Punjab, Haryana-Chandigarh-Delhi; West Uttar Pradesh, East Uttar Pradesh, West Rajasthan and East Rajasthan.
 - **Central India:** West Madhya Pradesh, East Madhya Pradesh, Vidarbha and Chhattisgarh.
 - **East India:** Bihar, Jharkhand, Sub-Himalayan West Bengal & Sikkim; Gangetic West Bengal, Odisha and Andaman & Nicobar Islands.
 - **Northeast India:** Arunachal Pradesh, Assam & Meghalaya and Nagaland, Manipur, Mizoram & Tripura.
 - **West India:** Gujarat Region, Saurashtra & Kutch, Konkan & Goa, Madhya Maharashtra and Marathawada.
 - **South India:** Coastal Andhra Pradesh & Yanam, Telangana, Rayalaseema, Coastal Karnataka, North Interior Karnataka, South Interior Karnataka, Kerala & Mahe, Tamil Nadu, Puducherry & Karaikal and Lakshadweep.

LEGENDS

1. अंडमान और निकोबार द्वीपसमूह

2. अरुणाचल प्रदेश

3. असम और मेघालय

4. नागालैंड, मणिपुर, मिजोरम और त्रिपुरा

5. उप-हिमालयी पश्चिम बंगाल और सिक्किम

6. गंगीय पश्चिम बंगाल

7. ओडिशा

8. झारखंड

9. बिहार

10. पूर्वी उत्तर प्रदेश

11. पश्चिम उत्तर प्रदेश

12. उत्तराखंड

13. हरियाणा, चंडीगढ़ और दिल्ली

14. पंजाब

15. हिमाचल प्रदेश

16. जम्मू और कश्मीर और लद्दाख

17. पश्चिम राजस्थान

18. पूर्वी राजस्थान

19. पश्चिम मध्य प्रदेश

20. पूर्वी मध्य प्रदेश

21. गुजरात

22. सौराष्ट्र

23. कोंकण और गोवा

24. मध्य महाराष्ट्र

25. मराठवाड़ा

26. विदर्भ

27. छत्तीसगढ़

28. तटीय आंध्र प्रदेश और यनम

29. तेलंगाना

30. रायलसीमा

31. तमिलनाडु, पुडुचेरी और कराईकल

32. तटीय कर्नाटक

33. आंतरिक उत्तरी कर्नाटक

34. आंतरिक दक्षिणी कर्नाटक

35. केरल और माहे

36. लक्षद्वीप



1. Andaman & Nicobar Islands

2. Arunachal Pradesh

3. Assam & Meghalaya

4. Nagaland, Manipur, Mizoram & Tripura

5. Sub-Himalayan West Bengal & Sikkim

6. Gangetic West Bengal

7. Odisha

8. Jharkhand

9. Bihar

10. East Uttar Pradesh

11. West Uttar Pradesh

12. Uttarakhand

13. Haryana, Chandigarh & Delhi

14. Punjab

15. Himachal Pradesh

16. Jammu & Kashmir and Ladakh

17. West Rajasthan

18. East Rajasthan

19. West Madhya Pradesh

20. East Madhya Pradesh

21. Gujarat

22. Saurashtra

23. Konkan & Goa

24. Madhya Maharashtra

25. Marathwada

26. Vidarbha

27. Chhattisgarh

28. Coastal Andhra Pradesh & Yanam

29. Telangana

30. Rayalaseema

31. Tamilnadu, Puducherry & Karaikal

32. Coastal Karnataka

33. North Interior Karnataka

34. South Interior Karnataka

35. Kerala & Mahe

36. Lakshadweep

SPATIAL DISTRIBUTION (% of Stations reporting)

% Stations	Category	% Stations	Category
76-100	Widespread (WS/Most Places)	26-50	Scattered (SCT/A Few Places)
51-75	Fairly Widespread (FWS/Many Places)	1-25	Isolated (ISOL)



Fog



Heavy Snow



Cold Wave



Heavy Rain



Dust Storm



Cold Day



Very Heavy Rain



Heat Wave



Ground Frost



Extremely Heavy Rain



Warm Night



Thunder & Lightning



Hot Day



Hailstorm



Hot & Humid



Dust Raising Winds



Strong Surface Winds

COLOUR CODED WARNING

No Warning (No Action)

Watch (Be Aware)

Alert (Be Prepared To Take Action)

Warning (Take Action)

Probabilistic Forecast

Terms	Probability of Occurrence (%)
Unlikely	< 25
Likely	25 - 50
Very Likely	50 - 75
Most Likely	> 75

* Red colour warning does not mean "Red Alert", Red colour warning means "Take Action".

Forecast and Warning for any day is valid from 0830 hours IST of day till 0830 hours IST of next day.

For more details, kindly visit <https://mausam.imd.gov.in> or contact: 011-2434-4599

(Service to the Nation since 1875)

DEFINITION/CRITERIA

Rain/ Snow *

Heavy: 64.5 to 115.5 mm/cm *
Very Heavy: 115.6 to 204.4 mm/cm *
Extremely Heavy: > 204.4 mm/cm *

Heat Wave

When maximum temperature of a station reaches $\geq 40^{\circ}\text{C}$ for plains and $\geq 30^{\circ}\text{C}$ for hilly regions
(a) Based on Departure from normal

Heat Wave: Maximum Temperature Departure from normal 4.5°C to 6.4°C .

Severe Heat Wave: Maximum Temperature Departure from normal $\geq 6.5^{\circ}\text{C}$

(b). Based on Actual maximum temperature

Heat Wave: When actual maximum temperature $\geq 45^{\circ}\text{C}$.

Severe Heat Wave: When actual maximum temperature $\geq 47^{\circ}\text{C}$.

(c). Criteria for heat wave for coastal stations

When maximum temperature departure is $> 4.5^{\circ}\text{C}$ from normal. Heat Wave may be described provided maximum temperature $\geq 37^{\circ}\text{C}$.

Warm Night

When maximum temperature remains 40°C

Warm Night: When minimum temperature departure 4.5°C to 6.4°C .

Severe Warm Night: When minimum temperature departure $> 6.4^{\circ}\text{C}$.

Cold Wave

When minimum temperature of a station $\leq 10^{\circ}\text{C}$ for plains and $\leq 0^{\circ}\text{C}$ for hilly regions.

(a). Based on departure

Cold Wave: Minimum Temperature Departure from normal -4.5°C to -6.4°C .

Severe Cold Wave: Minimum Temperature Departure from normal $\leq -6.5^{\circ}\text{C}$

(b) Based on actual Minimum Temperature (for Plains only)

Cold Wave: When Minimum Temperature is $\leq 4.0^{\circ}\text{C}$

Severe Cold Wave: When Minimum Temperature is $\leq 2.0^{\circ}\text{C}$

(c) For Coastal Stations

When Minimum Temperature departure is $\leq -4.5^{\circ}\text{C}$ & actual Minimum Temperature is $\leq 15^{\circ}\text{C}$

Cold Day

When minimum temperature of a station $\leq 10^{\circ}\text{C}$ for plains and $\leq 0^{\circ}\text{C}$ for hilly regions

Based on departure

Cold Day: Maximum Temperature Departure from normal -4.5°C to -6.4°C .

Severe Cold Day: Maximum Temperature Departure from normal $\leq -6.5^{\circ}\text{C}$

Fog

Phenomenon of small droplets suspended in air and the horizontal visibility $< 1\text{km}$

Moderate Fog: When the visibility between 500-200 metres

Dense Fog: when the visibility between 50- 200 metres

Very Dense Fog: when the visibility < 50 metres

Thunderstorm

Sudden electrical discharges manifested by a flash of light (Lightning) and a sharp rumbling sound (thunder)

Dust/Sand Storm

An ensemble of particles of dust or sand energetically lifted to great heights by a strong and turbulent wind.

Frost

Ice deposits on ground

Air temperature $\leq 4^{\circ}\text{C}$ (over Plains)

Squall

A strong wind that rises suddenly, lasts for atleast 1 minute.

Moderate: Wind speed 52-61 kmph

Severe: Wind speed 62-67 kmph

Very Severe: Wind speed > 67 kmph

Sea State

Effect of various waves in the sea over specific area

Rough to very rough: Wind speed 41-62 kmph (22-33 knots) & Wave height 2.5-6 metre

High to very high: Wind speed 63-117 kmph (34-63 knots) & Wave height 6-14 metre

Phenomenal: Wind speed > 117 kmph (> 63 knots) & Wave height > 14 metre

Cyclone

Cyclonic Storm: Wind speed 62-87 kmph (34-47 knots)

Severe Cyclonic Storm: Wind speed 88-117 kmph (48-63 knots)

Very Severe Cyclonic Storm: Wind speed 118-165 kmph (64 - 89 knots)

Extremely Severe Cyclonic Storm: Wind speed 166-220 kmph (90 -119 knots)

Super Cyclone Storm: Wind speed > 220 kmph (> 119 knots)

* Red colour warning does not mean "Red Alert", Red colour warning means "Take Action".

Forecast and Warning for any day is valid from 0830 hours IST of day till 0830 hours IST of next day.

For more details, kindly visit <https://mausam.imd.gov.in> or contact: 011-2434-4599

(Service to the Nation since 1875)