



Government of India  
Ministry of Earth Sciences  
India Meteorological Department



Press Release

Date: 14<sup>th</sup> October, 2025

Time of Issue: 1330 hours IST

**Subject: (i) Enhance rainfall activity with isolated heavy falls likely to continue over Kerala and Tamil Nadu during next 7 days.**

**(ii) Conditions are favourable for further withdrawal of southwest monsoon from remaining parts of country during next 2 days. Simultaneously with the setting in of easterly & northeasterly winds over southern peninsular India and south & adjoining central Bay of Bengal, the Northeast Monsoon rainfall activity is likely to commence over south east peninsular region during the same period.**

**Realised weather during past 24 hours till 0830 hours IST of today, the 14<sup>th</sup> October, 2025:**

- ❖ **Heavy rainfall (7-11 cm)** has been recorded at isolated places over Coastal Andhra Pradesh & Yanam, Tamil Nadu, Telangana

For more details of realised weather, kindly refer [ANNEXURE I](#).

**Withdrawal of southwest Monsoon:**

- ❖ The **line of withdrawal of southwest monsoon** now passes through 14°N/72°E, Karwar, Kalaburagi, Nizamabad, Kanker, Chandbali, 21.0°N/ 90.0°E, 22.0°N/ 95.0°E & 23.0°N/ 98.0°E. ([ANNEXURE II](#))
- ❖ **Southwest monsoon** has further withdrawn from some more parts of Odisha & Chhattisgarh and remaining parts of northeastern states.
- ❖ Conditions are favourable for further withdrawal of **southwest monsoon** from remaining parts of country during next 2 days. Simultaneously with the setting in of easterly & northeasterly winds over southern peninsular India and south & adjoining central Bay of Bengal, the **Northeast Monsoon** rainfall activity is likely to commence over south east peninsular region during the same period.

**Weather Systems, Forecast and Warnings (refer to Annexure III & IV):**

- ❖ An **upper air cyclonic circulation** lies over south Bangladesh & neighbourhood in lower tropospheric levels.
- ❖ An **upper air cyclonic circulation** lies over Gangetic West Bengal & Jharkhand in lower and middle tropospheric levels.
- ❖ An **upper air cyclonic circulation** lies over westcentral Arabian Sea in lower tropospheric levels.
- ❖ An **upper air cyclonic circulation** lies over southwest Bay of Bengal & adjoining and Indian Equatorial Ocean upto 3.1 km above mean sea level. It is likely to move west-northwestwards towards Comorin area. Under its influence, a **low-pressure area** is likely to form over southeast Arabian Sea & Lakshadweep area off Kerala-Karnataka coasts around 19<sup>th</sup> October, 2025.

**Under the influence of these systems, the following weather is likely:**

**South Peninsular India:**

- ❖ Light to moderate rain/thunderstorm at some/ isolated places with Isolated **heavy rainfall** Tamil Nadu and Kerala & Mahe during 14<sup>th</sup> – 20<sup>th</sup>; South Interior Karnataka, Coastal Andhra Pradesh & Yanam and Rayalaseema during 14<sup>th</sup> -16<sup>th</sup>; Lakshadweep during 16<sup>th</sup> -18<sup>th</sup> October.
- ❖ Thunderstorm with lightning and gusty wind (speed reaching 30-40 kmph) over the region for next 4-5 days.

### East & Central India:

- ❖ Thunderstorm with lightning and gusty wind (speed reaching 30-40 kmph) over Odisha during 14<sup>th</sup> -16<sup>th</sup> with lightning Vidarbha during 14<sup>th</sup> -16<sup>th</sup>; Chhattisgarh on 14<sup>th</sup>; Madhya Pradesh on 16<sup>th</sup> & 17<sup>th</sup> October.

### West India:

- ❖ Thunderstorm with lightning over Madhya Maharashtra during 14<sup>th</sup> -17<sup>th</sup> and Marathawada during 14<sup>th</sup> -16<sup>th</sup>; Konkan & Goa during 15<sup>th</sup>-17<sup>th</sup> October.

### Fisherman Warning:

Fishermen are advised not to venture into the following areas during 14<sup>th</sup> October to 19<sup>th</sup> October:

#### Arabian Sea:

- Maldives, Comorin areas, gulf of Mannar on 14<sup>th</sup> October and along and off Kerala coast, Lakshadweep, Maldives, Comorin areas during 15<sup>th</sup> to 19<sup>th</sup> October.
- Squally weather with wind speed reaching 35-45 gusting to 55 kmph is likely over Southeast Arabian Sea, Lakshadweep & Comorin Area and along & off Karnataka, Kerala and adjoining South Tamilnadu coasts during 17<sup>th</sup> -20<sup>th</sup> October.
- Fishermen are advised not to venture into Southeast Arabian Sea, Lakshadweep & Comorin Area and along & off Karnataka, Kerala and adjoining South Tamilnadu coasts during 17<sup>th</sup> -20<sup>th</sup> October.

#### Bay of Bengal:

- Along and off Tamil Nadu coast and adjoining sea areas on 16<sup>th</sup> & 17<sup>th</sup> October.
- Gulf of Mannar during 14<sup>th</sup> to 19<sup>th</sup> October.
- Squally weather with wind speed reaching 35-45 gusting to 55 kmph is likely over Southeast Bay of Bengal and along & off Tamilnadu & Puducherry and South Andhra Pradesh coasts during 16<sup>th</sup>-18<sup>th</sup> October.
- Fishermen are advised not to venture into Southeast Bay of Bengal and along & off Tamilnadu & Puducherry and South Andhra Pradesh coasts during 16<sup>th</sup>-18<sup>th</sup> October.

## ii. Weather conditions and forecast over Delhi/NCR during 14<sup>th</sup> to 17<sup>th</sup> October, 2025 (Annexure V)

For more details, kindly refer National Weather Bulletin:

[https://mausam.imd.gov.in/responsive/all\\_india\\_forecast\\_bulletin.php](https://mausam.imd.gov.in/responsive/all_india_forecast_bulletin.php)

For District wise warnings refer: <https://mausam.imd.gov.in/responsive/districtWiseWarningGIS.php>

For Fishermen warning refer <https://rsmcnewdelhi.imd.gov.in/fishermen-warning.php>

## ANNEXURE I

**Rainfall recorded (in cm) during past 24 hours till 0830 hours IST of today, the 14<sup>th</sup> October (≥ 7cm):**

**Tamil Nadu:** Rscl-3 Semmedu (dist Villupuram) 10; Kallakurichi (dist Kallakurichi), Kallakurichi ARG (dist Kallakurichi), Thalaivasal (dist Salem) 7 Each;

**Coastal Andhra Pradesh & Yanam:** Koyyalagudem (dist Eluru), Yanam (dist Yanam) 9 Each;

**Telangana:** Regonda (dist J. Bhupalpally) 7.

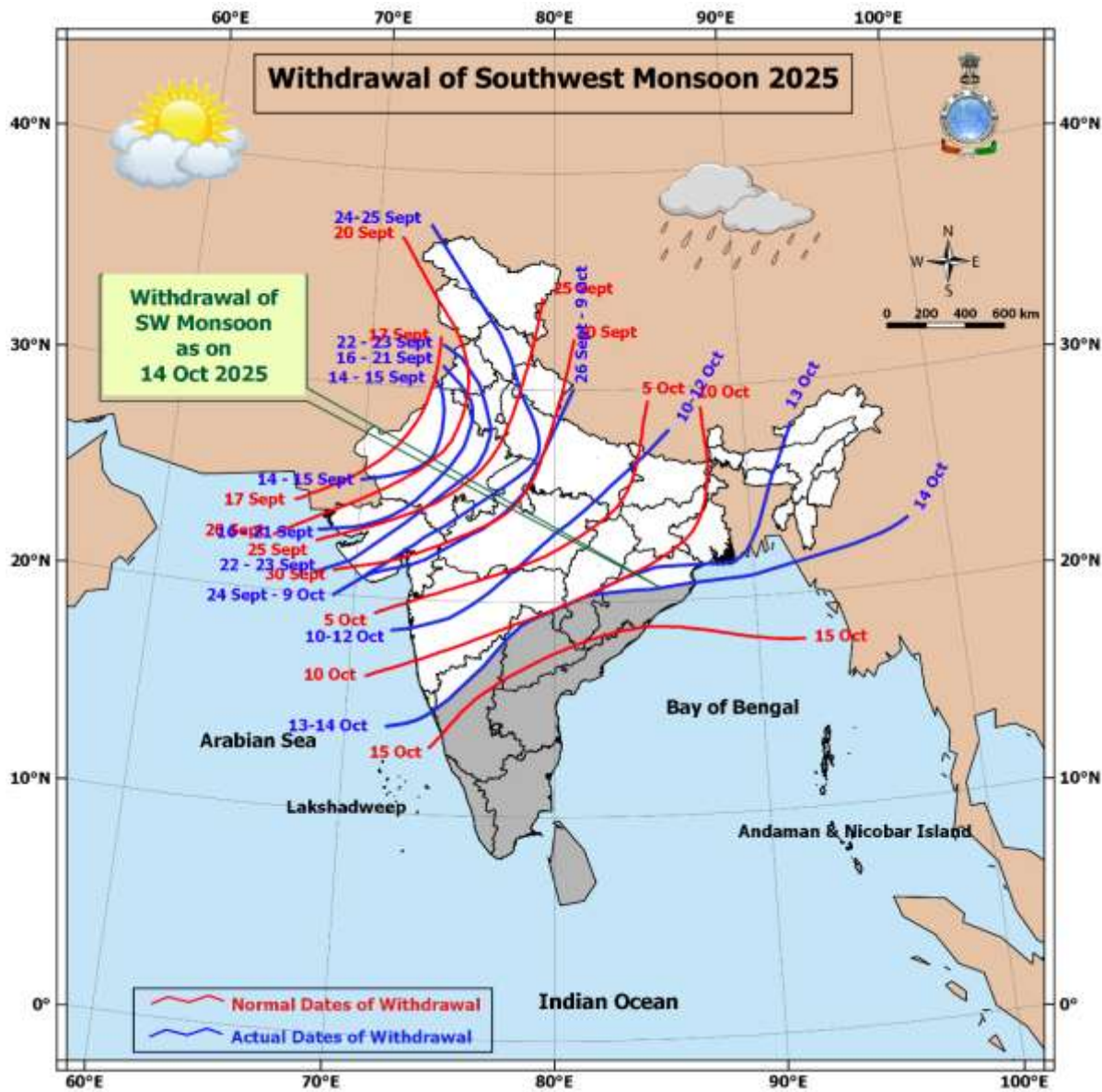
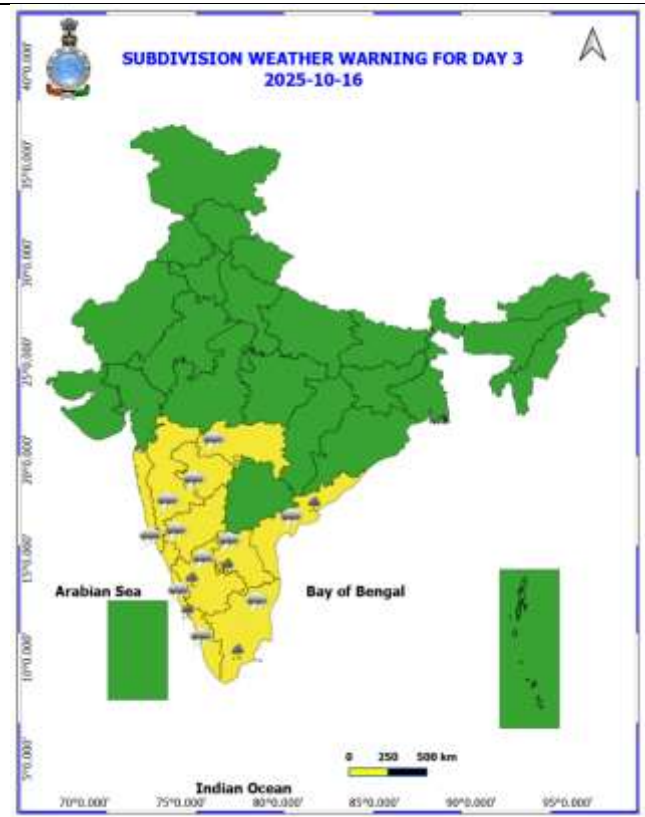
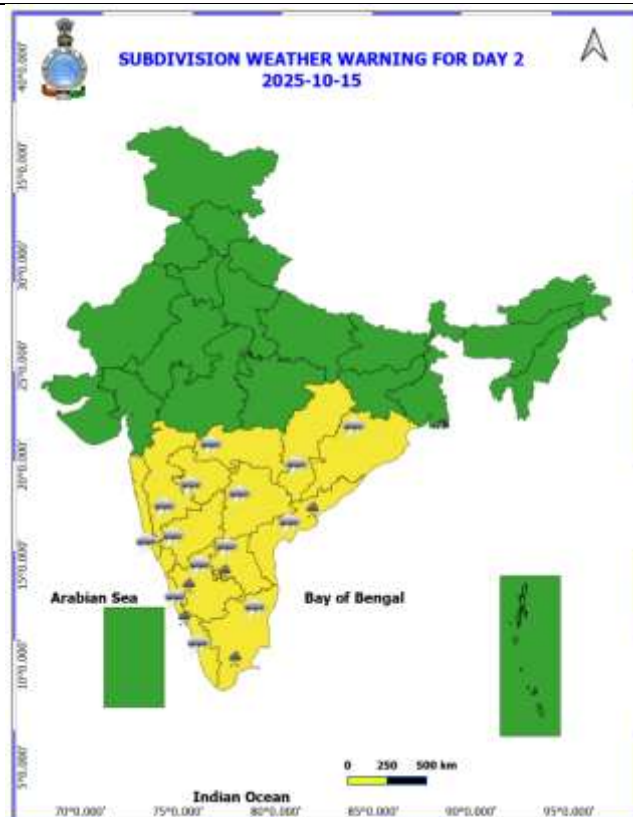
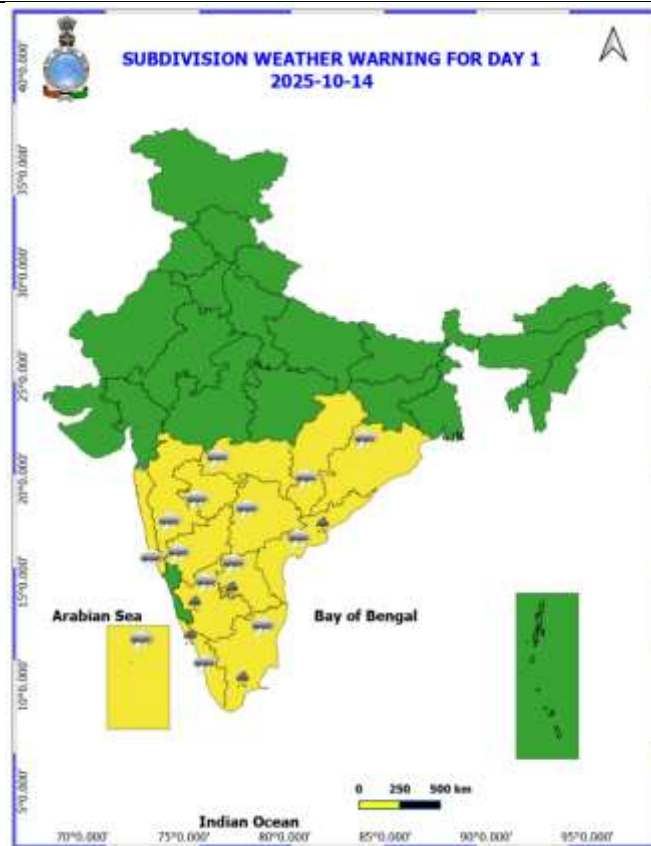
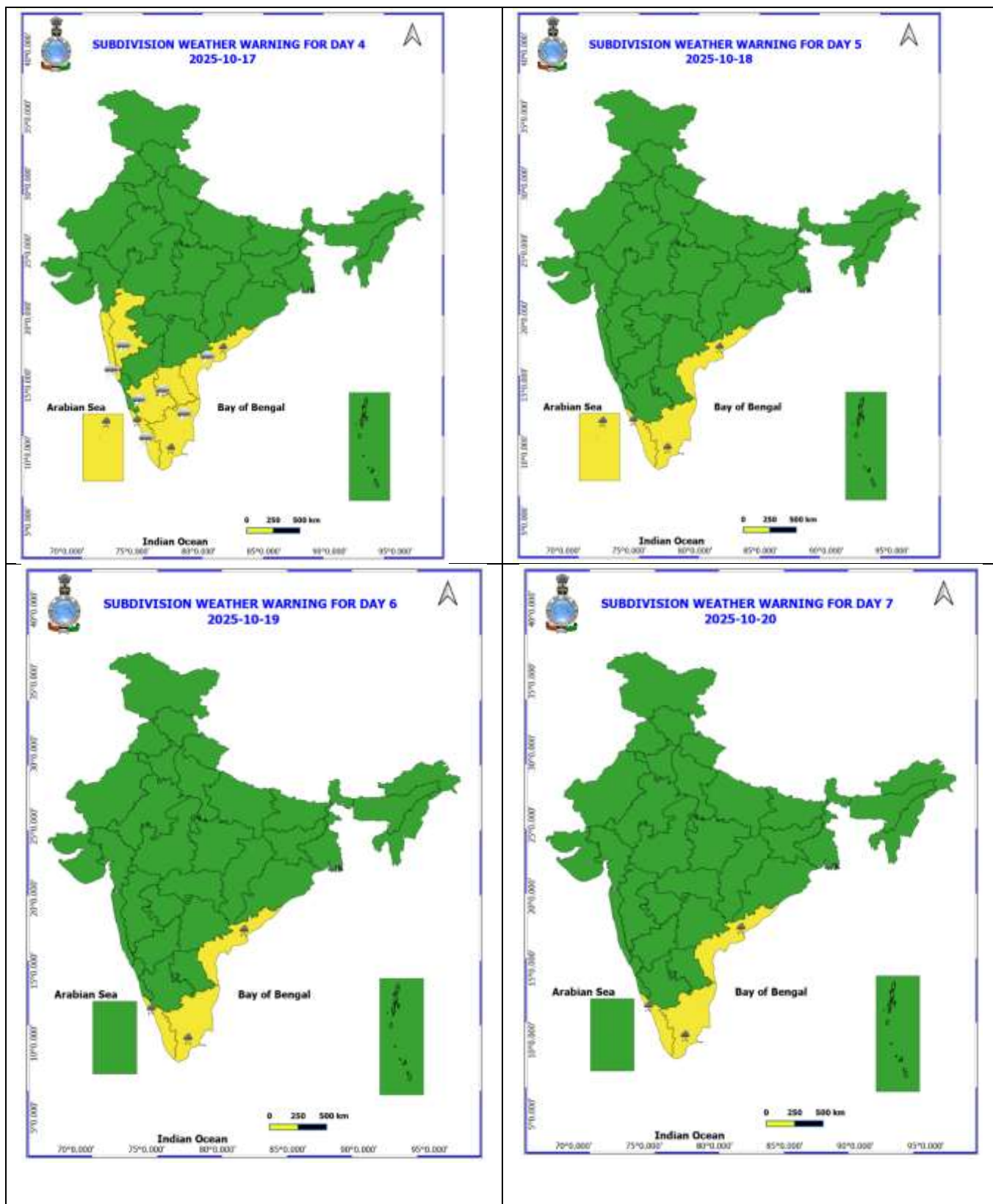


Table-1								
7 Days Rainfall Forecast								
S.No.	Subdivision	14- Oct	15- Oct	16- Oct	17- Oct	18- Oct	19- Oct	20- Oct
		Day 1	Day 2	Day 3	Day 4	Day 5	Day 6	Day 7
1	ANDAMAN & NICOBAR ISLANDS	SCT	SCT	SCT	SCT	SCT	FWS	FWS
2	ARUNACHAL PRADESH	DRY	DRY	DRY	DRY	DRY	DRY	ISOL
3	ASSAM & MEHGHALAYA	DRY	DRY	DRY	DRY	DRY	DRY	DRY
4	NAGALAND, MANIPUR, MIZORAM AND TRIPURA	ISOL	ISOL	ISOL	ISOL	ISOL	ISOL	ISOL
5	SUB HIMALAYAN WEST BENGAL & SIKKIM	DRY	DRY	DRY	DRY	DRY	DRY	DRY
6	GANGETIC WEST BENGAL	DRY	DRY	DRY	DRY	DRY	DRY	DRY
7	ODISHA	ISOL	ISOL	ISOL	ISOL	DRY	DRY	DRY
8	JHARKHAND	DRY	DRY	DRY	DRY	DRY	DRY	DRY
9	BIHAR	DRY	DRY	DRY	DRY	DRY	DRY	DRY
10	EAST UTTAR PRADESH	DRY	DRY	DRY	DRY	DRY	DRY	DRY
11	WEST UTTAR PRADESH	DRY	DRY	DRY	DRY	DRY	DRY	DRY
12	UTTARAKHAND	DRY	DRY	DRY	DRY	DRY	DRY	DRY
13	HARYANA, CHANDIGARH & DELHI	DRY	DRY	DRY	DRY	DRY	DRY	DRY
14	PUNJAB	DRY	DRY	DRY	DRY	DRY	DRY	DRY
15	HIMACHAL PRADESH	DRY	DRY	DRY	DRY	DRY	DRY	DRY
16	JAMMU AND KASHMIR AND LADAKH	DRY	DRY	DRY	DRY	DRY	DRY	DRY
17	WEST RAJASTHAN	DRY	DRY	DRY	DRY	DRY	DRY	DRY
18	EAST RAJASTHAN	DRY	DRY	DRY	DRY	DRY	DRY	DRY
19	WEST MADHYA PRADESH	DRY	ISOL	ISOL	ISOL	ISOL	ISOL	ISOL
20	EAST MADHYA PRADESH	DRY	ISOL	ISOL	ISOL	ISOL	DRY	DRY
21	GUJRAT REGION	DRY	DRY	ISOL	ISOL	ISOL	ISOL	DRY
22	SAURASHTRA & KUTCH	DRY	DRY	DRY	ISOL	ISOL	ISOL	DRY
23	KONKAN & GOA	ISOL	ISOL	ISOL	ISOL	ISOL	ISOL	ISOL
24	MADHYA MAHARASHTRA	ISOL	SCT	ISOL	ISOL	ISOL	ISOL	ISOL
25	MARATHWADA	ISOL	SCT	ISOL	ISOL	ISOL	ISOL	ISOL
26	VIDARBHA	ISOL	SCT	SCT	ISOL	ISOL	ISOL	DRY
27	CHHATTISGARH	ISOL	ISOL	ISOL	ISOL	ISOL	ISOL	ISOL
28	COASTAL ANDHRA PRADESH	FWS	FWS	FWS	SCT	SCT	SCT	SCT
29	TELANGANA	SCT	SCT	ISOL	ISOL	ISOL	ISOL	ISOL
30	RAYALASEEMA	FWS	FWS	FWS	FWS	FWS	SCT	SCT
31	TAMILNADU & PUDUCHERRY	SCT	FWS	FWS	FWS	FWS	SCT	SCT
32	COSTAL KARNATAKA	SCT	FWS	WFS	WFS	FWS	SCT	SCT
33	NORTH INTERIOR KARNATAKA	ISOL	SCT	SCT	SCT	SCT	SCT	ISOL
34	SOUTH INTERIOR KARNATAKA	FWS	FWS	FWS	FWS	SCT	SCT	SCT
35	KERALA AND MAHE	FWS	FWS	WFS	WFS	WFS	WFS	FWS
36	LAKSHADWEEP	WFS	WFS	WFS	WFS	WFS	WFS	WFS

- As the lead period increases forecast accuracy decrease.







- Action may be taken based on ORANGE AND REDCOLOUR warnings.
- Vulnerable regions likely urban and hilly areas action may be initiated for heavy rainfall warning.
- As the lead period increases forecast accuracy decreases.

Detailed districtwise MultiHazard weather warning for next five days available at  
<https://mausam.imd.gov.in/responsive/districtWiseWarningGIS.php>

## Weather forecast over Delhi/NCR during 14<sup>th</sup> to 17<sup>th</sup> October 2025

### Past Weather:

There has been no large change in the minimum and maximum temperature over Delhi/NCR during the past 24 hours. The maximum and minimum temperatures over Delhi were around 29 to 32°C and 17 to 19°C respectively. The minimum temperature was below normal up to 1 – 2°C and maximum temperature was below normal up to 2 – 4°C. Mainly clear sky conditions with predominant surface wind from the northwest/west direction with wind speeds up to 12 kmph prevailed during the past 24 hours. Mainly clear sky conditions with a wind speed of less than 10 kmph from the southwest direction prevailed over the region in the forenoon today.

### Weather Forecast:

**14.10.2025:** Mainly clear sky. Haze/Mist during morning hours. The maximum and minimum temperatures over Delhi are likely to be in the range of 31 to 33°C. The maximum temperature will be below normal up to 1 – 2°C. The predominant surface wind will likely to be from the northwest direction with a wind speed of up to 05 -10 kmph during afternoon hours. The wind speed will decrease becoming less than 08 kmph from the north direction during the evening and night.

**15.10.2025:** Mainly clear sky. Haze/Mist during morning hours. The maximum and minimum temperatures over Delhi are likely to be in the range of 32 to 34°C and 18 to 20°C respectively. The minimum temperature will be near normal and the maximum temperature will be near normal. The predominant surface wind will likely to be from the southwest direction with a wind speed of up to 10 kmph during morning hours. The wind speed will gradually increase becoming less than 12 kmph from the northwest direction in the afternoon. The wind speed will decrease becoming less than 10 kmph from the north direction during the evening and night.

**16.10.2025:** Mainly clear sky. Haze/Mist during morning hours. The maximum and minimum temperatures over Delhi are likely to be in the range of 32 to 34°C and 19 to 21°C respectively. The minimum temperature will be above normal up to 1 – 2°C and the maximum temperature will be near normal. The predominant surface wind will likely to be from the north direction with a wind speed of up to 08 kmph during morning hours. The wind speed will increase becoming less than 12 kmph from the north direction in the afternoon. The wind speed will gradually decrease becoming less than 08 kmph from the north direction during the evening and night.

**17.10.2025:** Mainly clear sky. Haze/Mist during morning hours. The maximum and minimum temperatures over Delhi are likely to be in the range of 31 to 33°C and 19 to 21°C respectively. The minimum temperature will be above normal up to 1 – 2°C and the maximum temperature will be near normal. The predominant surface wind will likely to be from the northwest direction with a wind speed of up to 10 kmph during morning hours. The wind speed will increase becoming less than 15 kmph from the northwest direction in the afternoon. The wind speed will gradually decrease becoming less than 10 kmph from the north direction during the evening and night.

### Agromet advisories for likely impact of Heavy Rainfall

- In **Tamil Nadu**, store the harvested produce of rice and groundnut in safer places. Provide adequate drainage facilities in fields of rice, cotton, turmeric, garlic, ginger and vegetables and plantations of coconut, banana and black pepper to avoid water stagnation.
- In **Kerala**, make provision to drain out excess water from fields of rice and plantations of banana, coconut, arecanut and black pepper.
- In **South Interior Karnataka**, keep the harvested produce of groundnut, maize pepper, cardamom, turmeric and coffee to dry, covered and ventilated areas or cover with tarpaulins in the fields. Make necessary arrangements to drain out excess water from fields of rice, maize, finger millet, pigeon pea, soybean, groundnut and vegetables and plantations of banana, black pepper, coconut and arecanut to avoid waterlogging.
- In **Coastal Andhra Pradesh**, provide adequate drainage facilities in fields of rice, maize, pigeon pea, black gram, green gram, groundnut, turmeric, ginger, vegetables and plantations of coconut, arecanut, banana, coffee and black pepper.
- In **Rayalseema**, maintain proper drainage in fields of rice, groundnut, cotton, turmeric and vegetables.

### **Livestock / Fishery**

- Keep the animals inside the shed during heavy rainfall and provide them balanced feed.
- Store feed and fodder in a safe place to prevent spoilage.
- Construct an outlet with proper netting around the ponds to drain out excess water, thereby preventing fish from escaping in case of overflow.

### **Agromet advisories for likely impact of Thunderstorm / Gusty Winds / Squally Winds**

- Provide mechanical support to horticultural crops and staking or support to vegetables and young fruit plants / fruit-bearing plants to avoid lodging due to strong winds.
- Tie the harvested crops properly and cover them to minimise the risk of displacement due to strong surface winds.

### **Legends & abbreviations:**

- ❖ **Heavy Rain:** 64.5-115.5mm; **Very Heavy Rain:** 115.6-204.4mm; **Extremely Heavy Rain:** >204.4mm.
- ❖ **Obsy:** Observatory; Automatic Weather Station; **ARG:** Automatic Rain Gauge; **dist:** District; **NH:** National Highway; **KVK:** Krishi Vigyan Kendra; **DVC:** Damodar Valley Corporation; **PTO:** Part Time Office, **Aero:** Aerodrome, **IAF:** Indian Air Force.
- ❖ **Region wise classification of meteorological Sub-Divisions:**
  - **Northwest India:** Western Himalayan Region (Jammu-Kashmir-Ladakh-Gilgit-Baltistan-Muzaffarabad, Himachal Pradesh and Uttarakhand); Punjab, Haryana-Chandigarh-Delhi; West Uttar Pradesh, East Uttar Pradesh, West Rajasthan and East Rajasthan.
  - **Central India:** West Madhya Pradesh, East Madhya Pradesh, Vidarbha and Chhattisgarh.
  - **East India:** Bihar, Jharkhand, Sub-Himalayan West Bengal & Sikkim; Gangetic West Bengal, Odisha and Andaman & Nicobar Islands.
  - **Northeast India:** Arunachal Pradesh, Assam & Meghalaya and Nagaland, Manipur, Mizoram & Tripura.
  - **West India:** Gujarat Region, Saurashtra & Kutch, Konkan & Goa, Madhya Maharashtra and Marathawada.
  - **South India:** Coastal Andhra Pradesh & Yanam, Telangana, Rayalaseema, Coastal Karnataka, North Interior Karnataka, South Interior Karnataka, Kerala & Mahe, Tamil Nadu, Puducherry & Karaikal and Lakshadweep.



## LEGENDS

1. अंडमान और निकोबार द्वीपसमूह

2. अरुणाचल प्रदेश

3. असम और मेघालय

4. नागालैंड, मणिपुर, मिजोरम और त्रिपुरा

5. उप-हिमालयी पश्चिम बंगाल और सिक्किम

6. गंगीय पश्चिम बंगाल

7. ओडिशा

8. झारखंड

9. बिहार

10. पूर्वी उत्तर प्रदेश

11. पश्चिम उत्तर प्रदेश

12. उत्तराखंड

13. हरियाणा, चंडीगढ़ और दिल्ली

14. पंजाब

15. हिमाचल प्रदेश

16. जम्मू और कश्मीर और लद्दाख

17. पश्चिम राजस्थान

18. पूर्वी राजस्थान

19. पश्चिम मध्य प्रदेश

20. पूर्वी मध्य प्रदेश

21. गुजरात

22. सौराष्ट्र

23. कोंकण और गोवा

24. मध्य महाराष्ट्र

25. मराठवाड़ा

26. विदर्भ

27. छत्तीसगढ़

28. तटीय आंध्र प्रदेश और यनम

29. तेलंगाना

30. रायलसीमा

31. तमिलनाडु, पुडुचेरी और कराईकल

32. तटीय कर्नाटक

33. आंतरिक उत्तरी कर्नाटक

34. आंतरिक दक्षिणी कर्नाटक

35. केरल और माहे

36. लक्षद्वीप



1. Andaman & Nicobar Islands

2. Arunachal Pradesh

3. Assam & Meghalaya

4. Nagaland, Manipur, Mizoram & Tripura

5. Sub-Himalayan West Bengal & Sikkim

6. Gangetic West Bengal

7. Odisha

8. Jharkhand

9. Bihar

10. East Uttar Pradesh

11. West Uttar Pradesh

12. Uttarakhand

13. Haryana, Chandigarh & Delhi

14. Punjab

15. Himachal Pradesh

16. Jammu & Kashmir and Ladakh

17. West Rajasthan

18. East Rajasthan

19. West Madhya Pradesh

20. East Madhya Pradesh

21. Gujarat

22. Saurashtra

23. Konkan & Goa

24. Madhya Maharashtra

25. Marathwada

26. Vidarbha

27. Chhattisgarh

28. Coastal Andhra Pradesh & Yanam

29. Telangana

30. Rayalaseema

31. Tamilnadu, Puducherry & Karaikal

32. Coastal Karnataka

33. North Interior Karnataka

34. South Interior Karnataka

35. Kerala & Mahe

36. Lakshadweep

## SPATIAL DISTRIBUTION (% of Stations reporting)

% Stations	Category	% Stations	Category
76-100	Widespread (WS/Most Places)	26-50	Scattered (SCT/A Few Places)
51-75	Fairly Widespread (FWS/Many Places)	1-25	Isolated (ISOL)



Fog



Heavy Rain



Very Heavy Rain



Extremely Heavy Rain



Thunder & Lightning



Hailstorm



Dust Raising Winds



Heavy Snow



Dust Storm



Heat Wave



Warm Night



Hot Day



Hot & Humid



Strong Surface Winds



Cold Wave



Cold Day



Ground Frost

### COLOUR CODED WARNING

No Warning (No Action)

Watch (Be Aware)

Alert (Be Prepared To Take Action)

Warning (Take Action)

### Probabilistic Forecast

Terms	Probability of Occurrence (%)
Unlikely	< 25
Likely	25 - 50
Very Likely	50 - 75
Most Likely	> 75

\* Red colour warning does not mean "Red Alert", Red colour warning means "Take Action".

Forecast and Warning for any day is valid from 0830 hours IST of day till 0830 hours IST of next day.

For more details, kindly visit <https://mausam.imd.gov.in> or contact: 011-2434-4599

(Service to the Nation since 1875)

## DEFINITION/CRITERIA

### Rain/ Snow \*

Heavy: 64.5 to 115.5 mm/cm \*  
Very Heavy: 115.6 to 204.4 mm/cm \*  
Extremely Heavy: > 204.4 mm/cm \*

### Heat Wave

When maximum temperature of a station reaches  $\geq 40^{\circ}\text{C}$  for plains and  $\geq 30^{\circ}\text{C}$  for hilly regions  
(a) Based on Departure from normal

Heat Wave: Maximum Temperature Departure from normal  $4.5^{\circ}\text{C}$  to  $6.4^{\circ}\text{C}$ .

Severe Heat Wave: Maximum Temperature Departure from normal  $\geq 6.5^{\circ}\text{C}$

(b). Based on Actual maximum temperature

Heat Wave: When actual maximum temperature  $\geq 45^{\circ}\text{C}$ .

Severe Heat Wave: When actual maximum temperature  $\geq 47^{\circ}\text{C}$ .

(c). Criteria for heat wave for coastal stations

When maximum temperature departure is  $> 4.5^{\circ}\text{C}$  from normal. Heat Wave may be described provided maximum temperature  $\geq 37^{\circ}\text{C}$ .

### Warm Night

When maximum temperature remains  $40^{\circ}\text{C}$

Warm Night: When minimum temperature departure  $4.5^{\circ}\text{C}$  to  $6.4^{\circ}\text{C}$ .

Severe Warm Night: When minimum temperature departure  $> 6.4^{\circ}\text{C}$ .

### Cold Wave

When minimum temperature of a station  $\leq 10^{\circ}\text{C}$  for plains and  $\leq 0^{\circ}\text{C}$  for hilly regions.

(a). Based on departure

Cold Wave: Minimum Temperature Departure from normal  $-4.5^{\circ}\text{C}$  to  $-6.4^{\circ}\text{C}$ .

Severe Cold Wave: Minimum Temperature Departure from normal  $\leq -6.5^{\circ}\text{C}$

(b) Based on actual Minimum Temperature (for Plains only)

Cold Wave: When Minimum Temperature is  $\leq 4.0^{\circ}\text{C}$

Severe Cold Wave: When Minimum Temperature is  $\leq 2.0^{\circ}\text{C}$

(c) For Coastal Stations

When Minimum Temperature departure is  $\leq -4.5^{\circ}\text{C}$  & actual Minimum Temperature is  $\leq 15^{\circ}\text{C}$

### Cold Day

When minimum temperature of a station  $\leq 10^{\circ}\text{C}$  for plains and  $\leq 0^{\circ}\text{C}$  for hilly regions

Based on departure

Cold Day: Maximum Temperature Departure from normal  $-4.5^{\circ}\text{C}$  to  $-6.4^{\circ}\text{C}$ .

Severe Cold Day: Maximum Temperature Departure from normal  $\leq -6.5^{\circ}\text{C}$

### Fog

Phenomenon of small droplets suspended in air and the horizontal visibility  $< 1\text{km}$

Moderate Fog: When the visibility between 500-200 metres

Dense Fog: when the visibility between 50- 200 metres

Very Dense Fog: when the visibility  $< 50$  metres

### Thunderstorm

Sudden electrical discharges manifested by a flash of light (Lightning) and a sharp rumbling sound (thunder)

### Dust/Sand Storm

An ensemble of particles of dust or sand energetically lifted to great heights by a strong and turbulent wind.

### Frost

Ice deposits on ground

Air temperature  $\leq 4^{\circ}\text{C}$  ( over Plains)

### Squall

A strong wind that rises suddenly, lasts for atleast 1 minute.

Moderate: Wind speed 52-61 kmph

Severe: Wind speed 62-67 kmph

Very Severe: Wind speed  $> 67$  kmph

### Sea State

Effect of various waves in the sea over specific area

Rough to very rough: Wind speed 41-62 kmph (22-33 knots) & Wave height 2.5-6 metre

High to very high: Wind speed 63-117 kmph (34-63 knots) & Wave height 6-14 metre

Phenomenal: Wind speed  $> 117$  kmph ( $> 63$  knots) & Wave height  $> 14$  metre

### Cyclone

Cyclonic Storm: Wind speed 62-87 kmph (34-47 knots)

Severe Cyclonic Storm: Wind speed 88-117 kmph (48-63 knots)

Very Severe Cyclonic Storm: Wind speed 118-165 kmph (64 - 89 knots)

Extremely Severe Cyclonic Storm: Wind speed 166-220 kmph (90 -119 knots)

Super Cyclone Storm: Wind speed  $> 220$  kmph ( $> 119$  knots)

\* Red colour warning does not mean "Red Alert", Red colour warning means "Take Action".

Forecast and Warning for any day is valid from 0830 hours IST of day till 0830 hours IST of next day.

For more details, kindly visit <https://mausam.imd.gov.in> or contact: 011-2434-4599

(Service to the Nation since 1875)