



**Government of India
Ministry of Earth Sciences
India Meteorological Department**



Press Release

Date: 16th October, 2025

Time of Issue: 1315 hours IST

Subject: (i) Southwest monsoon has withdrawn from the entire country today, the 16th October, 2025. Simultaneously, the Northeast Monsoon rainfall activity has commenced over Tamil Nadu, Puducherry & Karaikal, Coastal Andhra Pradesh, Rayalaseema, South Interior Karnataka and Kerala-Mahe today, the 16th October.

(ii) Enhanced rainfall activity with isolated heavy to very heavy falls likely to continue over Kerala, Tamil Nadu and Puducherry during next 7 days.

Realised weather during past 24 hours ending at 0830 hours IST of today, the 16th October, 2025:

- ❖ **Heavy to very heavy rainfall (7-20 cm)** has been recorded at isolated places over Tamil Nadu.
 - ❖ **Heavy rainfall (7-11 cm)** has been recorded at isolated places over Konkan & Goa.
- For more details of realised weather, kindly refer [ANNEXURE I](#).**

Withdrawal of Southwest Monsoon: (ANNEXURE II)

- ❖ Southwest monsoon has withdrawn from the entire country today, the 16th October, 2025. Simultaneously, the Northeast Monsoon rainfall activity has commenced over Tamil Nadu, Puducherry & Karaikal, Coastal Andhra Pradesh, Rayalaseema, South Interior Karnataka and Kerala-Mahe today, the 16th October, in association with following features:
 - (a) An upper air cyclonic circulation lies over Comorin area & neighbourhood extending upto mid tropospheric levels.
 - (b) Easterly/northeasterly winds set-in over southern peninsular India, south & adjoining central Bay of Bengal in the lower tropospheric levels,
 - (c) Fairly widespread rainfall occurred over Tamil Nadu, Puducherry & Karaikal and adjoining area of south Coastal Andhra Pradesh and Kerala during the past 24 hrs. Rainfall also occurred at a few places over Rayalaseema and adjoining areas of South Interior Karnataka during the same period.
 - (d) Isolated heavy to very heavy rainfall occurred over Tamilnadu during the same period.

Weather Systems, Forecast and Warnings (refer to Annexure III & IV):

- ❖ An **upper air cyclonic circulation** lies over southeast Arabian Sea & adjoining Lakshadweep area in the lower & middle tropospheric levels tilting southwards with height. Under its influence, a **low-pressure area** is likely to form over southeast Arabian Sea & Lakshadweep area off Kerala-Karnataka coasts around 18th October, 2025. Thereafter, it is likely to move west northwestwards and intensify into a **depression** during subsequent 48 hours.

Under the influence of these systems, the following weather is likely:

South Peninsular India:

- ❖ Light to moderate rain/thunderstorm at some/ isolated places with isolated **heavy rainfall** over Tamil Nadu Kerala & Mahe during 16th -22st; Lakshadweep, South Interior Karnataka during 16th -19th; Coastal Karnataka, Coastal Andhra Pradesh & Yanam and Rayalaseema on 16th & 17th; North Interior Karnataka on 16th October; with **very heavy rainfall** over Tamil Nadu, Kerala & Mahe and Lakshadweep on 16th & 17th October.
- ❖ Thunderstorm with lightning over the region for next 5 days.

East India:

- ❖ Thunderstorm with lightning and gusty winds (speed reaching 30-40 kmph) over south Odisha on 16th October.

West India:

- ❖ Thunderstorm with lightning over Konkan & Goa and Madhya Maharashtra on 16th & during 18th -20th; Marathawada on 16th October.

Fisherman Warning:

Fishermen are advised not to venture into the following areas during 16th October to 21st October:

Arabian Sea:

- Lakshadweep, Maldives, Comorin areas, during 16th to 21st October; along and off Kerala coast during 16th to 21st October; along and off Karnataka coast during 17th to 21st October; southeast Arabian Sea during 17th to 21st October; some parts of southwest, eastcentral Arabian Sea on 19th & 20th October.

Bay of Bengal:

- Along and off Tamil Nadu coast and adjoining south Andhra Pradesh coasts on 16th & 17th October.
- Gulf of Mannar during 16th to 21st October.
- Few southern parts of south Bay of Bengal on 20th October.

ii. Weather conditions and forecast over Delhi/NCR during 16th to 19th October, 2025 (Annexure V)

For more details, kindly refer National Weather Bulletin:

https://mausam.imd.gov.in/responsive/all_india_forecast_bulletin.php

For District wise warnings refer: <https://mausam.imd.gov.in/responsive/districtWiseWarningGIS.php>

For Fishermen warning refer <https://rsmcnewdelhi.imd.gov.in/fishermen-warning.php>

ANNEXURE I

Rainfall recorded (in cm) during past 24 hours till 0830 hours IST of today, the 16th October (≥ 7cm):

Tamil Nadu, Puducherry & Karaikal: Tiruchendur (dist Toothukudi), Kayalpattinam (dist Toothukudi) 15 Each; Thiruchendur AWS (dist Toothukudi) 13; Tuticorin (dist Toothukudi), Tuticorin Rly ARG (dist Toothukudi), Arcot (dist Ranipet) 9 Each; Satankulam (dist Toothukudi) 8; Nanguneri (dist Tirunelveli), Nambiyar Dam (dist Tirunelveli) 7 Each;

Konkan & Goa: Vaibhavwadi (dist Sindhudurg) 7.

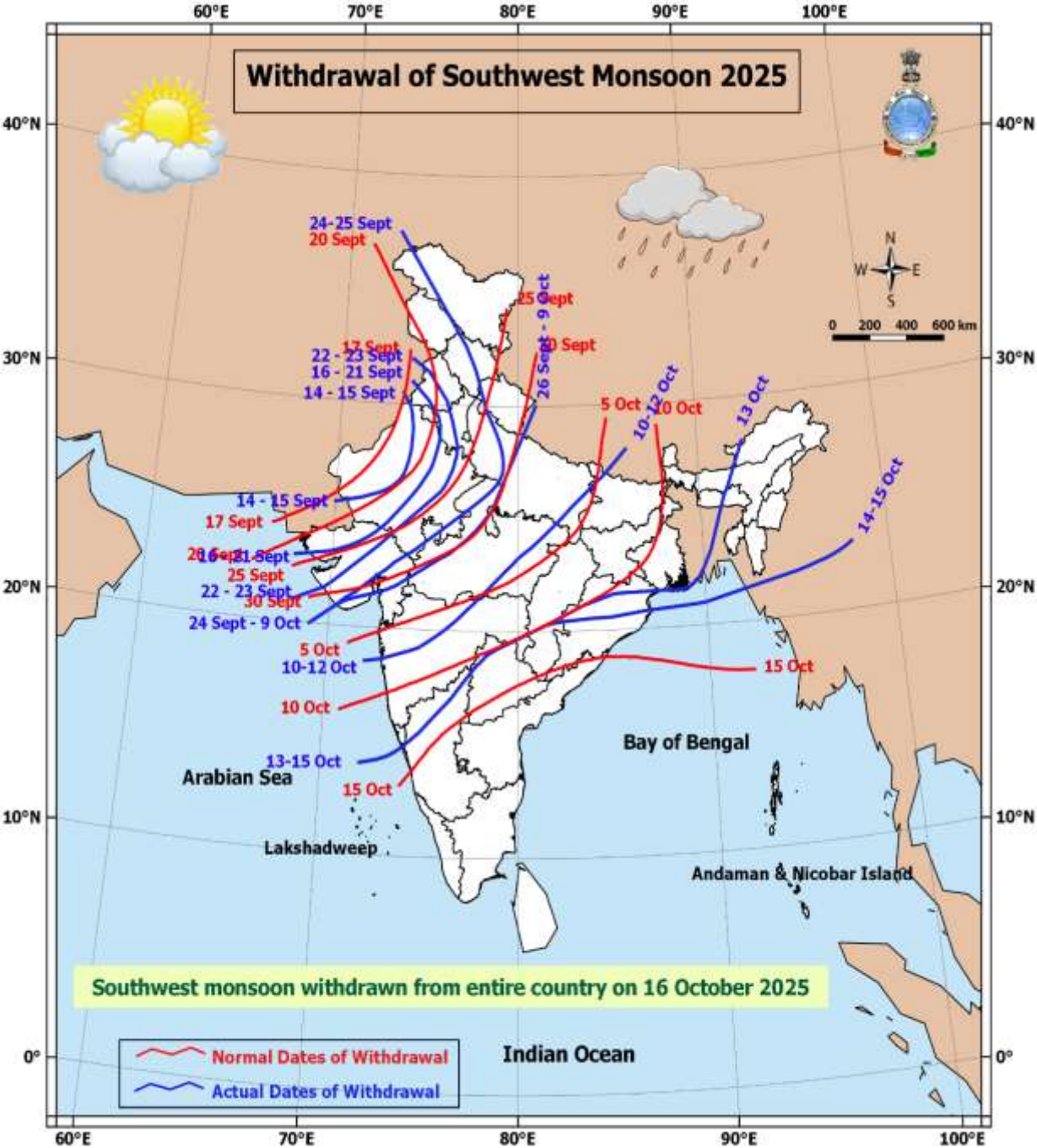
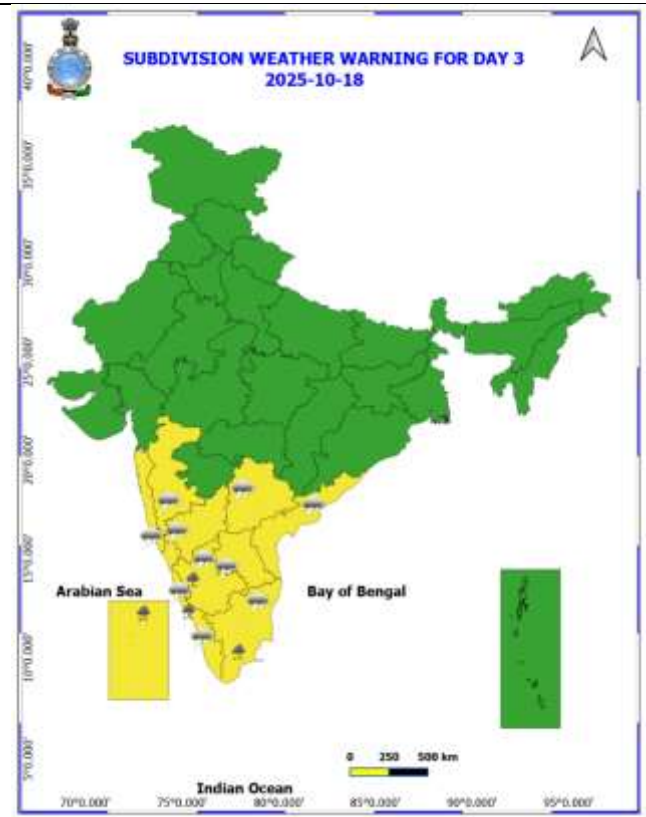
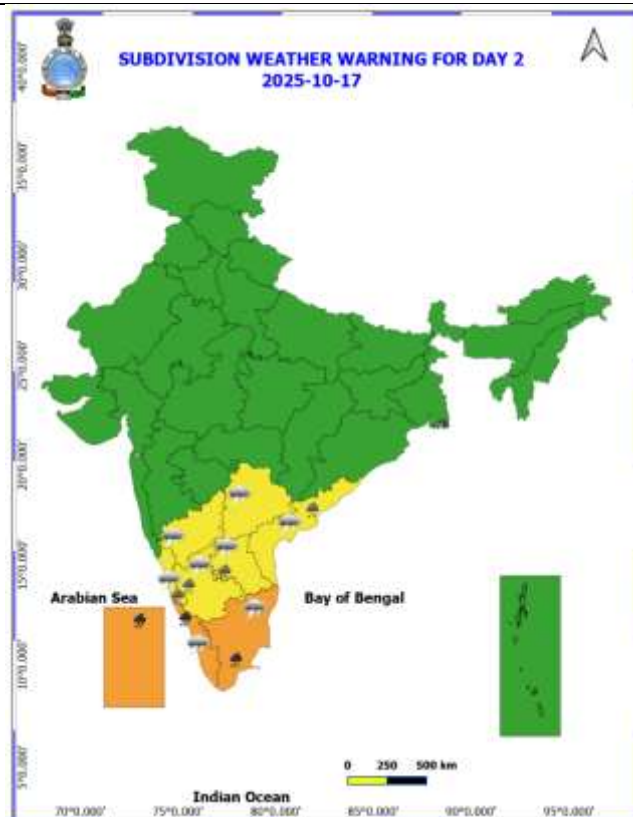
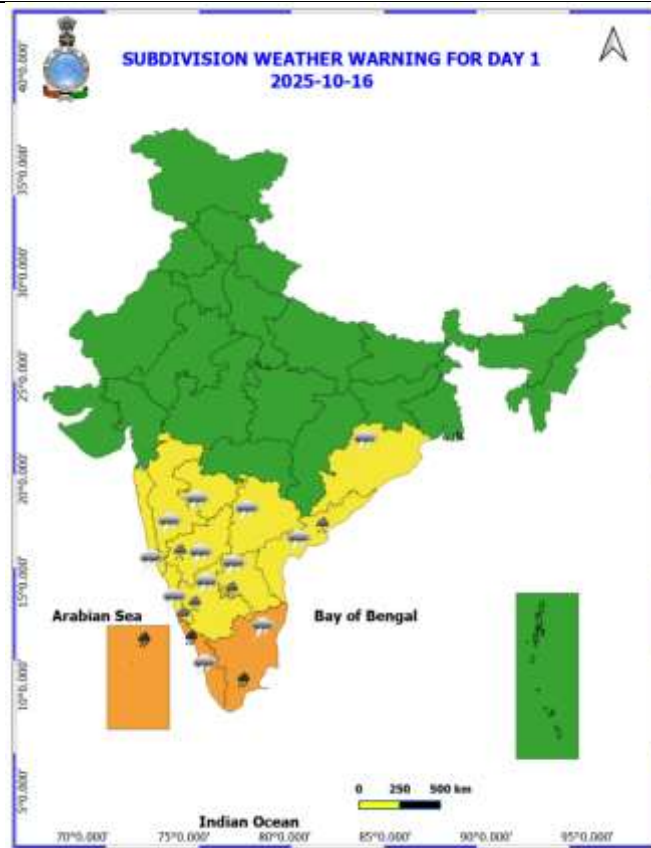
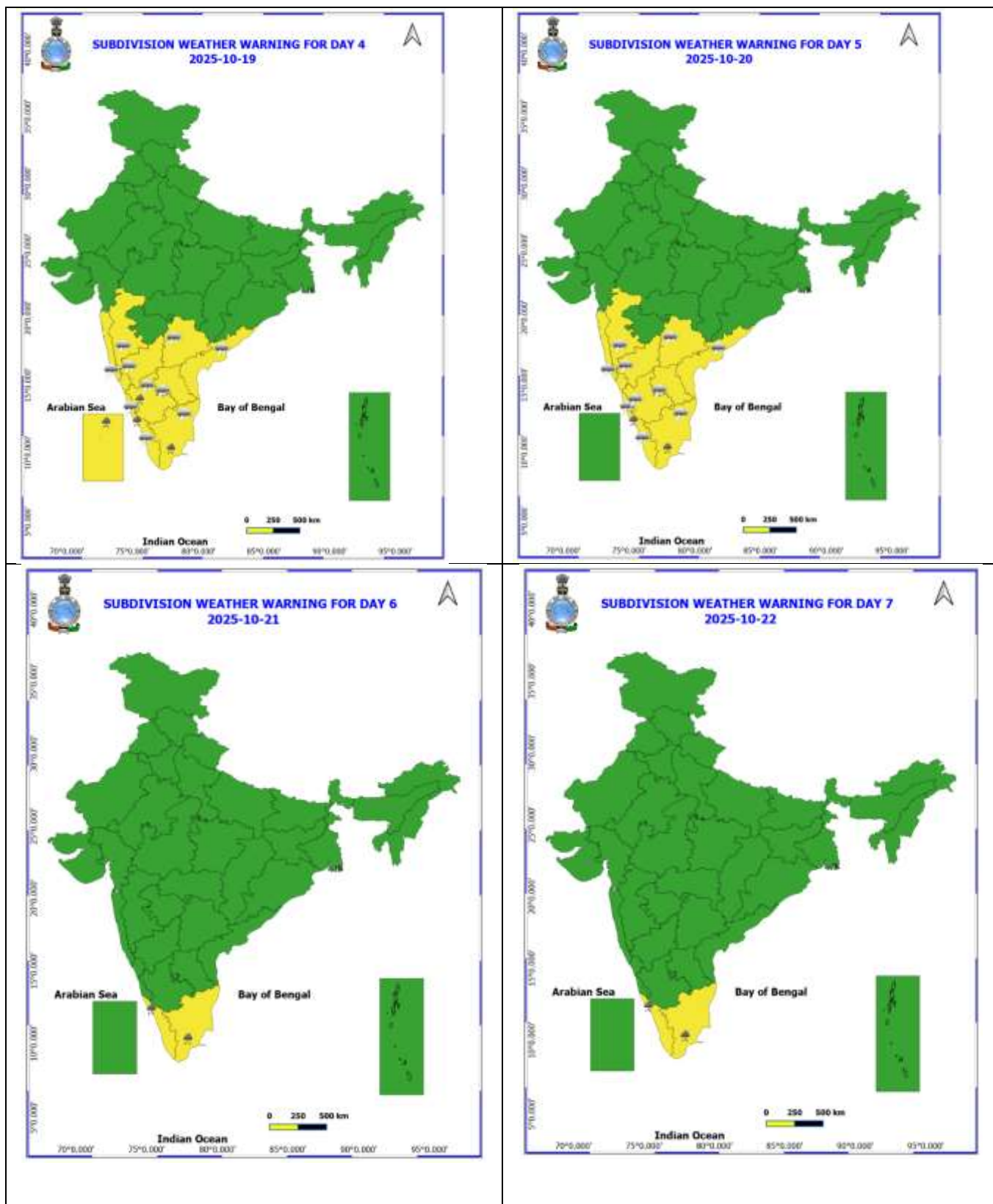


Table-1								
7 Days Rainfall Forecast								
S.No.	Subdivision	16- Oct	17- Oct	18- Oct	19- Oct	20- Oct	21- Oct	22- Oct
		Day 1	Day 2	Day 3	Day 4	Day 5	Day 6	Day 7
1	ANDAMAN & NICOBAR ISLANDS	SCT	SCT	SCT	FWS	FWS	FWS	FWS
2	ARUNACHAL PRADESH	DRY	DRY	DRY	DRY	DRY	DRY	DRY
3	ASSAM & MEHGHALAYA	ISOL	ISOL	DRY	DRY	DRY	ISOL	ISOL
4	NAGALAND, MANIPUR, MIZORAM AND TRIPURA	ISOL	ISOL	ISOL	ISOL	ISOL	ISOL	ISOL
5	SUB HIMALAYAN WEST BENGAL & SIKKIM	DRY	DRY	ISOL	ISOL	DRY	DRY	ISOL
6	GANGETIC WEST BENGAL	DRY	DRY	ISOL	ISOL	DRY	DRY	DRY
7	ODISHA	ISOL	DRY	DRY	ISOL	ISOL	ISOL	ISOL
8	JHARKHAND	DRY	DRY	DRY	DRY	ISOL	DRY	DRY
9	BIHAR	DRY	DRY	DRY	DRY	DRY	DRY	DRY
10	EAST UTTAR PRADESH	DRY	DRY	DRY	DRY	DRY	DRY	DRY
11	WEST UTTAR PRADESH	DRY	DRY	DRY	DRY	DRY	DRY	DRY
12	UTTARAKHAND	ISOL	DRY	DRY	DRY	DRY	DRY	DRY
13	HARYANA, CHANDIGARH & DELHI	DRY	DRY	DRY	DRY	DRY	DRY	DRY
14	PUNJAB	DRY	DRY	DRY	DRY	DRY	DRY	DRY
15	HIMACHAL PRADESH	DRY	DRY	DRY	DRY	DRY	DRY	DRY
16	JAMMU AND KASHMIR AND LADAKH	DRY	DRY	DRY	DRY	ISOL	ISOL	DRY
17	WEST RAJASTHAN	DRY	DRY	DRY	DRY	DRY	DRY	DRY
18	EAST RAJASTHAN	DRY	DRY	DRY	DRY	DRY	DRY	DRY
19	WEST MADHYA PRADESH	ISOL	ISOL	DRY	DRY	DRY	ISOL	ISOL
20	EAST MADHYA PRADESH	ISOL	ISOL	DRY	DRY	DRY	ISOL	ISOL
21	GUJRAT REGION	ISOL	DRY	DRY	DRY	ISOL	ISOL	ISOL
22	SAURASHTRA & KUTCH	DRY	DRY	DRY	DRY	DRY	DRY	DRY
23	KONKAN & GOA	ISOL	ISOL	ISOL	ISOL	ISOL	ISOL	ISOL
24	MADHYA MAHARASHTRA	ISOL	ISOL	ISOL	ISOL	ISOL	ISOL	ISOL
25	MARATHWADA	ISOL	ISOL	ISOL	ISOL	ISOL	ISOL	ISOL
26	VIDARBHA	ISOL	DRY	DRY	DRY	DRY	DRY	ISOL
27	CHHATTISGARH	ISOL	DRY	ISOL	ISOL	ISOL	ISOL	ISOL
28	COASTAL ANDHRA PRADESH	SCT	SCT	SCT	FWS	FWS	FWS	SCT
29	TELANGANA	ISOL	ISOL	ISOL	ISOL	ISOL	ISOL	ISOL
30	RAYALASEEMA	SCT	FWS	FWS	FWS	FWS	FWS	SCT
31	TAMILNADU & PUDUCHERRY	FWS	FWS	FWS	SCT	SCT	SCT	SCT
32	COSTAL KARNATAKA	FWS	SCT	FWS	FWS	FWS	FWS	FWS
33	NORTH INTERIOR KARNATAKA	ISOL	ISOL	SCT	SCT	SCT	SCT	SCT
34	SOUTH INTERIOR KARNATAKA	FWS	FWS	SCT	SCT	FWS	FWS	FWS
35	KERALA AND MAHE	WS	WS	WS	WS	WS	FWS	FWS
36	LAKSHADWEEP	WS	WS	WS	WS	WS	FWS	FWS

- As the lead period increases forecast accuracy decrease.





- Action may be taken based on ORANGE AND REDCOLOUR warnings.
- Vulnerable regions likely urban and hilly areas action may be initiated for heavy rainfall warning.
- As the lead period increases forecast accuracy decreases.

Detailed districtwise MultiHazard weather warning for next five days available at
<https://mausam.imd.gov.in/responsive/districtWiseWarningGIS.php>

Weather forecast over Delhi/NCR during 16th to 19th October 2025

Past Weather:

There has been no large change in the minimum and maximum temperature over Delhi/NCR during the past 24 hours. The maximum and minimum temperatures over Delhi were around 30 to 32°C and 17 to 18°C respectively. The minimum temperature was below normal up to 1 – 3°C and maximum temperature was below normal up to 1 – 2°C. Mainly clear sky conditions with predominant surface wind from the northwest direction with wind speeds up to 10 kmph prevailed during the past 24 hours. Mainly clear sky conditions with calm wind in early morning hours as gradually increase becoming up to 10 kmph from the southwest direction prevailed over the region in the forenoon today.

Weather Forecast:

16.10.2025: Mainly clear sky. The maximum and minimum temperatures over Delhi are likely to be in the range of 31 to 33°C. The maximum temperature will be below normal up to 1 – 2°C. The predominant surface wind will likely to be from the northwest direction with a wind speed of up to 10 -15 kmph during afternoon hours. The wind speed will decrease becoming less than 12 kmph from the north direction during the evening and night.

17.10.2025: Mainly clear sky. Mist/haze during morning hours. The maximum and minimum temperatures over Delhi are likely to be in the range of 32 to 34°C and 17 to 19°C respectively. The minimum temperature will be below normal up to 1 – 2°C and the maximum temperature will be near normal. The predominant surface wind will likely to be from the northwest direction with a wind speed of up to 10 kmph during morning hours. The wind speed will gradually increase becoming less than 15 kmph from the northwest direction in the afternoon. The wind speed will decrease becoming less than 05 kmph from the northeast direction during the evening and night.

18.10.2025: Mainly clear sky. Mist/haze during morning hours. The maximum and minimum temperatures over Delhi are likely to be in the range of 32 to 34°C and 18 to 20°C respectively. The minimum temperature will be near normal and the maximum temperature will be near normal. The predominant surface wind will likely to be from the west direction with a wind speed of up to 06 kmph during morning hours. The wind speed will increase becoming less than 15 kmph from the north direction in the afternoon. The wind speed will gradually decrease becoming less than 12 kmph from the north direction during the evening and night.

19.10.2025: Smog/shallow fog is likely at many places during morning hours becoming mainly clear sky with mist/haze from noon onwards. The maximum and minimum temperatures over Delhi are likely to be in the range of 32 to 34°C and 19 to 21°C respectively. The minimum temperature will be near normal and the maximum temperature will be near normal. The predominant surface wind will likely to be from the northeast direction with a wind speed of up to 06 kmph during morning hours. The wind speed will increase becoming less than 15 kmph from the north direction in the afternoon. The wind speed will gradually decrease becoming less than 06 kmph from the northeast direction during the evening and night.

Impact & Action Suggested due to

❖ **Very heavy rainfall** over Tamil Nadu, Kerala & Mahe and Lakshadweep on 16th & 17th October.

Impact Expected

- Localized Flooding of roads, water logging in low lying areas and closure of underpasses mainly in urban areas of the above region.
- Occasional reduction in visibility due to heavy rainfall.
- Disruption of traffic in major cities due to water logging in roads leading to increased travel time.
- Minor damage to kutcha roads.
- Possibilities of damage to vulnerable structure.
- Localized Landslides/Mudslides/landslips/mudslips/landsinks/mudsinks.
- Damage to horticulture and standing crops in some areas due to inundation.
- It may lead to riverine flooding in some river catchments mainly over Bihar, Jharkhand and West Bengal (for riverine flooding please visit Web page of CWC)

Action Suggested

- Check for traffic congestion on your route before leaving for your destination.
- Follow any traffic advisories that are issued in this regard.
- Avoid going to areas that face the water logging problems often.
- Avoid staying in vulnerable structure.

Agromet advisories for likely impact of Heavy Rainfall

- In **Tamil Nadu**, store the harvested produce of rice and groundnut in safer places. Provide adequate drainage facilities in fields of rice, cotton, turmeric, garlic, ginger and vegetables and plantations of coconut, banana and black pepper to avoid water stagnation.
- In **Kerala**, make provision to drain out excess water from fields of rice and plantations of banana, coconut, arecanut and black pepper.
- In **Coastal Karnataka**, undertake harvesting of arecanut and coconut and keep the harvested produce at safer places. In **South Interior Karnataka**, keep the harvested produce of groundnut, maize pepper, cardamom, turmeric and coffee to dry, covered and ventilated areas or cover with tarpaulins in the fields. Make necessary arrangements to drain out excess water from fields of rice, maize, finger millet, pigeon pea, soybean, groundnut and vegetables and plantations of banana, black pepper, coconut and arecanut to avoid waterlogging.
- In **Coastal Andhra Pradesh**, provide adequate drainage facilities in fields of rice, maize, pigeon pea, black gram, green gram, groundnut, turmeric, ginger, vegetables and plantations of coconut, arecanut, banana, coffee and black pepper.
- In **Rayalseema**, maintain proper drainage in fields of rice, groundnut, cotton, turmeric and vegetables.

Livestock / Fishery

- Keep the animals inside the shed during heavy rainfall and provide them balanced feed.
- Store feed and fodder in a safe place to prevent spoilage.
- Construct an outlet with proper netting around the ponds to drain out excess water, thereby preventing fish from escaping in case of overflow.

Agromet advisories for likely impact of Thunderstorm / Gusty Winds / Squally Winds

- Provide mechanical support to horticultural crops and staking or support to vegetables and young fruit plants / fruit-bearing plants to avoid lodging due to strong winds.
- Tie the harvested crops properly and cover them to minimise the risk of displacement due to strong surface winds.

Legends & abbreviations:

- ❖ **Heavy Rain:**64.5-115.5mm; **Very Heavy Rain:**115.6-204.4mm; **Extremely Heavy Rain:** >204.4mm.
- ❖ **Obsy:** Observatory; **Automatic Weather Station;** **ARG:** Automatic Rain Gauge; **dist:** District; **NH:** National Highway; **KVK:** Krishi Vigyan Kendra; **DVC:** Damodar Valley Corporation; **PTO:** Part Time Office, **Aero:** Aerodrome, **IAF:** Indian Air Force.
- ❖ **Region wise classification of meteorological Sub-Divisions:**
 - **Northwest India:** Western Himalayan Region (Jammu-Kashmir-Ladakh-Gilgit-Baltistan-Muzaffarabad, Himachal Pradesh and Uttarakhand); Punjab, Haryana-Chandigarh-Delhi; West Uttar Pradesh, East Uttar Pradesh, West Rajasthan and East Rajasthan.
 - **Central India:** West Madhya Pradesh, East Madhya Pradesh, Vidarbha and Chhattisgarh.
 - **East India:** Bihar, Jharkhand, Sub-Himalayan West Bengal & Sikkim; Gangetic West Bengal, Odisha and Andaman & Nicobar Islands.
 - **Northeast India:** Arunachal Pradesh, Assam & Meghalaya and Nagaland, Manipur, Mizoram & Tripura.
 - **West India:** Gujarat Region, Saurashtra & Kutch, Konkan & Goa, Madhya Maharashtra and Marathawada.
 - **South India:** Coastal Andhra Pradesh & Yanam, Telangana, Rayalaseema, Coastal Karnataka, North Interior Karnataka, South Interior Karnataka, Kerala & Mahe, Tamil Nadu, Puducherry & Karaikal and Lakshadweep.

LEGENDS

1. अंडमान और निकोबार द्वीपसमूह

2. अरुणाचल प्रदेश

3. असम और मेघालय

4. नागालैंड, मणिपुर, मिजोरम और त्रिपुरा

5. उप-हिमालयी पश्चिम बंगाल और सिक्किम

6. गंगीय पश्चिम बंगाल

7. ओडिशा

8. झारखंड

9. बिहार

10. पूर्वी उत्तर प्रदेश

11. पश्चिम उत्तर प्रदेश

12. उत्तराखंड

13. हरियाणा, चंडीगढ़ और दिल्ली

14. पंजाब

15. हिमाचल प्रदेश

16. जम्मू और कश्मीर और लद्दाख

17. पश्चिम राजस्थान

18. पूर्वी राजस्थान

19. पश्चिम मध्य प्रदेश

20. पूर्वी मध्य प्रदेश

21. गुजरात

22. सौराष्ट्र

23. कोंकण और गोवा

24. मध्य महाराष्ट्र

25. मराठवाड़ा

26. विदर्भ

27. छत्तीसगढ़

28. तटीय आंध्र प्रदेश और यनम

29. तेलंगाना

30. रायलसीमा

31. तमिलनाडु, पुडुचेरी और कराईकल

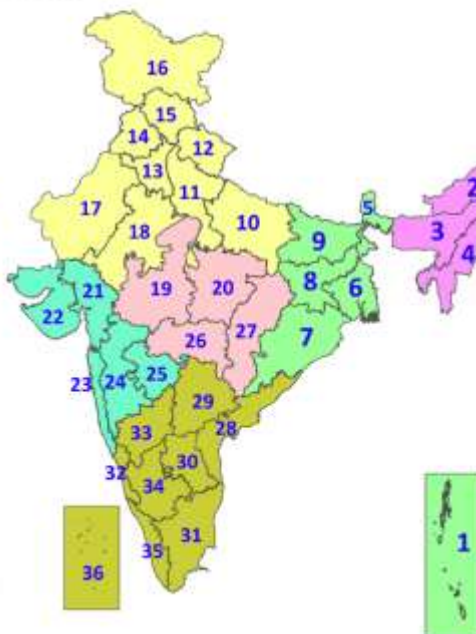
32. तटीय कर्नाटक

33. आंतरिक उत्तरी कर्नाटक

34. आंतरिक दक्षिणी कर्नाटक

35. केरल और माहे

36. लक्षद्वीप



1. Andaman & Nicobar Islands

2. Arunachal Pradesh

3. Assam & Meghalaya

4. Nagaland, Manipur, Mizoram & Tripura

5. Sub-Himalayan West Bengal & Sikkim

6. Gangetic West Bengal

7. Odisha

8. Jharkhand

9. Bihar

10. East Uttar Pradesh

11. West Uttar Pradesh

12. Uttarakhand

13. Haryana, Chandigarh & Delhi

14. Punjab

15. Himachal Pradesh

16. Jammu & Kashmir and Ladakh

17. West Rajasthan

18. East Rajasthan

19. West Madhya Pradesh

20. East Madhya Pradesh

21. Gujarat

22. Saurashtra

23. Konkan & Goa

24. Madhya Maharashtra

25. Marathwada

26. Vidarbha

27. Chhattisgarh

28. Coastal Andhra Pradesh & Yanam

29. Telangana

30. Rayalaseema

31. Tamilnadu, Puducherry & Karaikal

32. Coastal Karnataka

33. North Interior Karnataka

34. South Interior Karnataka

35. Kerala & Mahe

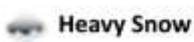
36. Lakshadweep

SPATIAL DISTRIBUTION (% of Stations reporting)

% Stations	Category	% Stations	Category
76-100	Widespread (WS/Most Places)	26-50	Scattered (SCT/A Few Places)
51-75	Fairly Widespread (FWS/Many Places)	1-25	Isolated (ISOL)



Fog



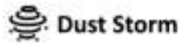
Heavy Snow



Cold Wave



Heavy Rain



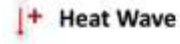
Dust Storm



Cold Day



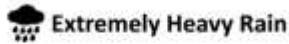
Very Heavy Rain



Heat Wave



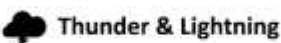
Ground Frost



Extremely Heavy Rain



Warm Night



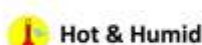
Thunder & Lightning



Hot Day



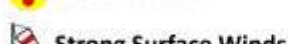
Hailstorm



Hot & Humid



Dust Raising Winds



Strong Surface Winds

COLOUR CODED WARNING

No Warning (No Action)

Watch (Be Aware)

Alert (Be Prepared To Take Action)

Warning (Take Action)

Probabilistic Forecast

Terms	Probability of Occurrence (%)
Unlikely	< 25
Likely	25 - 50
Very Likely	50 - 75
Most Likely	> 75

* Red colour warning does not mean "Red Alert", Red colour warning means "Take Action".

Forecast and Warning for any day is valid from 0830 hours IST of day till 0830 hours IST of next day.

For more details, kindly visit <https://mausam.imd.gov.in> or contact: 011-2434-4599

(Service to the Nation since 1875)

DEFINITION/CRITERIA

Rain/ Snow *

Heavy: 64.5 to 115.5 mm/cm *
Very Heavy: 115.6 to 204.4 mm/cm *
Extremely Heavy: > 204.4 mm/cm *

Heat Wave

When maximum temperature of a station reaches $\geq 40^{\circ}\text{C}$ for plains and $\geq 30^{\circ}\text{C}$ for hilly regions
(a) Based on Departure from normal

Heat Wave: Maximum Temperature Departure from normal 4.5°C to 6.4°C .

Severe Heat Wave: Maximum Temperature Departure from normal $\geq 6.5^{\circ}\text{C}$

(b). Based on Actual maximum temperature

Heat Wave: When actual maximum temperature $\geq 45^{\circ}\text{C}$.

Severe Heat Wave: When actual maximum temperature $\geq 47^{\circ}\text{C}$.

(c). Criteria for heat wave for coastal stations

When maximum temperature departure is $> 4.5^{\circ}\text{C}$ from normal. Heat Wave may be described provided maximum temperature $\geq 37^{\circ}\text{C}$.

Warm Night

When maximum temperature remains 40°C

Warm Night: When minimum temperature departure 4.5°C to 6.4°C .

Severe Warm Night: When minimum temperature departure $> 6.4^{\circ}\text{C}$.

Cold Wave

When minimum temperature of a station $\leq 10^{\circ}\text{C}$ for plains and $\leq 0^{\circ}\text{C}$ for hilly regions.

(a). Based on departure

Cold Wave: Minimum Temperature Departure from normal -4.5°C to -6.4°C .

Severe Cold Wave: Minimum Temperature Departure from normal $\leq -6.5^{\circ}\text{C}$

(b) Based on actual Minimum Temperature (for Plains only)

Cold Wave: When Minimum Temperature is $\leq 4.0^{\circ}\text{C}$

Severe Cold Wave: When Minimum Temperature is $\leq 2.0^{\circ}\text{C}$

(c) For Coastal Stations

When Minimum Temperature departure is $\leq -4.5^{\circ}\text{C}$ & actual Minimum Temperature is $\leq 15^{\circ}\text{C}$

Cold Day

When minimum temperature of a station $\leq 10^{\circ}\text{C}$ for plains and $\leq 0^{\circ}\text{C}$ for hilly regions

Based on departure

Cold Day: Maximum Temperature Departure from normal -4.5°C to -6.4°C .

Severe Cold Day: Maximum Temperature Departure from normal $\leq -6.5^{\circ}\text{C}$

Fog

Phenomenon of small droplets suspended in air and the horizontal visibility $< 1\text{km}$

Moderate Fog: When the visibility between 500-200 metres

Dense Fog: when the visibility between 50- 200 metres

Very Dense Fog: when the visibility < 50 metres

Thunderstorm

Sudden electrical discharges manifested by a flash of light (Lightning) and a sharp rumbling sound (thunder)

Dust/Sand Storm

An ensemble of particles of dust or sand energetically lifted to great heights by a strong and turbulent wind.

Frost

Ice deposits on ground

Air temperature $\leq 4^{\circ}\text{C}$ (over Plains)

Squall

A strong wind that rises suddenly, lasts for atleast 1 minute.

Moderate: Wind speed 52-61 kmph

Severe: Wind speed 62-67 kmph

Very Severe: Wind speed > 67 kmph

Sea State

Effect of various waves in the sea over specific area

Rough to very rough: Wind speed 41-62 kmph (22-33 knots) & Wave height 2.5-6 metre

High to very high: Wind speed 63-117 kmph (34-63 knots) & Wave height 6-14 metre

Phenomenal: Wind speed > 117 kmph (> 63 knots) & Wave height > 14 metre

Cyclone

Cyclonic Storm: Wind speed 62-87 kmph (34-47 knots)

Severe Cyclonic Storm: Wind speed 88-117 kmph (48-63 knots)

Very Severe Cyclonic Storm: Wind speed 118-165 kmph (64 - 89 knots)

Extremely Severe Cyclonic Storm: Wind speed 166-220 kmph (90 -119 knots)

Super Cyclone Storm: Wind speed > 220 kmph (> 119 knots)

* Red colour warning does not mean "Red Alert", Red colour warning means "Take Action".

Forecast and Warning for any day is valid from 0830 hours IST of day till 0830 hours IST of next day.

For more details, kindly visit <https://mausam.imd.gov.in> or contact: 011-2434-4599

(Service to the Nation since 1875)