



Government of India  
Ministry of Earth Sciences  
India Meteorological Department



Press Release

Date: 18<sup>th</sup> October, 2025

Time of Issue: 1430 hours IST

**Subject: (i) Well marked Low-Pressure area over southeast Arabian Sea & Lakshadweep area off Kerala-Karnataka coasts. It is likely to move west north-westwards and intensify into a depression during next 36 hours.**

**(ii) A Low Pressure Area is likely to form over southeast Bay of Bengal around 21<sup>st</sup> October. It is likely to move west-northwestwards and intensify further into a depression over central parts of south Bay of Bengal and adjoining westcentral Bay of Bengal during subsequent 48 hours.**

**(iii) Isolated heavy to very heavy rainfall likely to continue over Kerala, Lakshadweep, Tamil Nadu and Puducherry during next 2 days.**

**Realised weather during past 24 hours ending at 0830 hours IST of today, the 18<sup>th</sup> October, 2025:**

- ❖ **Heavy to very heavy rainfall (7-20 cm)** has been recorded at isolated places over Kerala and Tamil Nadu.
- ❖ **Heavy rainfall (7-11 cm)** has been recorded at isolated places over Rayalaseema and Lakshadweep.

For more details of realised weather, kindly refer [ANNEXURE I](#).

**Weather Systems, Forecast and Warnings (refer to ANNEXURE II & III):**

- ❖ Under the influence of yesterday's upper air cyclonic circulation over southeast Arabian Sea & adjoining Lakshadweep area, a **Low-Pressure area** has formed over southeast Arabian Sea & Lakshadweep area off Kerala-Karnataka coasts at 0530 hrs IST of today, the 18<sup>th</sup> October, 2025. It became **well marked low pressure area** over the same region at 0830 hrs IST of today, the 18<sup>th</sup> October, 2025. The associated cyclonic circulation extends upto middle tropospheric levels. It is likely to move west north-westwards and intensify into a **depression** during next 36 hours.
- ❖ An upper air **cyclonic circulation** lies over Gulf of Mannar & neighbourhood in lower tropospheric levels.
- ❖ An upper air **cyclonic circulation** lies over south Andaman Sea & adjoining southeast Bay of Bengal in lower tropospheric levels. Under its influence, a **Low Pressure Area** is likely to form over southeast Bay of Bengal around 21<sup>st</sup> October. It is likely to move west-northwestwards and intensify further into a **depression** over central parts of south Bay of Bengal and adjoining westcentral Bay of Bengal during subsequent 48 hours.
- ❖ A **trough** runs from the cyclonic circulation associated with Well Marked Low Pressure area over southeast Arabian Sea & Lakshadweep area off Kerala-Karnataka coasts to the cyclonic circulation over south Andaman Sea & adjoining southeast Bay of Bengal in lower tropospheric levels.

**Under the influence of these systems, the following weather is likely:**

**South Peninsular India:**

- ❖ Light to moderate rain/thunderstorm at many/some places with isolated **heavy rainfall** over Tamil Nadu, Puducherry & Karaikal, Kerala & Mahe during 18<sup>th</sup>-24<sup>th</sup>; South Interior Karnataka during 18<sup>th</sup>-20<sup>th</sup> & 22<sup>nd</sup>-24<sup>th</sup>; Coastal Karnataka on 18<sup>th</sup>, 19<sup>th</sup>, 23<sup>th</sup> & 24<sup>th</sup>; Coastal Andhra Pradesh & Yanam and Rayalaseema during 22<sup>nd</sup>-24<sup>th</sup> October; with **very heavy rainfall** over interior Tamil Nadu on 18<sup>th</sup>; north Tamil Nadu & adjoining coastal Tamil Nadu on 22<sup>nd</sup> & 23<sup>rd</sup>; Kerala & Mahe and Lakshadweep on 18<sup>th</sup> & 19<sup>th</sup>; south Coastal Andhra Pradesh & Yanam and Rayalaseema on 23<sup>rd</sup> & 24<sup>th</sup> October.
- ❖ Thunderstorm with lightning/gusty winds (speed reaching 30-40 kmph) likely over the region during next 5 days.

- ❖ Strong surface winds (speed reaching 30-40 kmph) likely over South Interior Karnataka and Coastal Andhra Pradesh & Yanam on 23<sup>rd</sup> & 24<sup>th</sup> October.

#### **East & Central India:**

- ❖ Light to moderate rain/thunderstorm at many places with isolated **heavy rainfall** over Nicobar on 18<sup>th</sup>; Andaman & Nicobar Islands during 19<sup>th</sup>-22<sup>nd</sup> October.
- ❖ Thunderstorm with lightning and gusty winds (speed reaching 30-40 kmph) likely over Odisha during 19<sup>th</sup>-21<sup>st</sup>; Andaman & Nicobar Islands during 18<sup>th</sup>-22<sup>nd</sup>; with lightning over West Madhya Pradesh on 18<sup>th</sup>, 21<sup>st</sup> & 22<sup>nd</sup>; Chhattisgarh during 20<sup>th</sup>-22<sup>nd</sup>; East Madhya Pradesh & Vidarbha on 21<sup>st</sup> & 22<sup>nd</sup> October.

#### **West India:**

- ❖ Thunderstorm with lightning likely over Konkan & Goa and south Madhya Maharashtra during 18<sup>th</sup> -22<sup>nd</sup>; Marathwada on 21<sup>st</sup> & 22<sup>nd</sup> October.

#### **Warning for Arabian Sea, Lakshadweep & Comorin Area and along & off Karnataka, Kerala and adjoining South Tamil Nadu coasts**

##### **Wind warning:**

Squally weather with wind speed reaching 35-45 gusting to 55 kmph is likely to prevail over Southeast and adjoining Eastcentral Arabian Sea, Lakshadweep & Comorin Area and along & off Karnataka, Kerala and adjoining South Tamil Nadu coasts till evening of 19<sup>th</sup> October.

It is likely to increase thereafter becoming squally wind with speed reaching 40-50 kmph gusting to 60 kmph over central parts of south Arabian sea and adjoining central Arabian Sea from 19<sup>th</sup> October evening to 21<sup>st</sup> October and southwest and adjoining westcentral Arabian Sea on 22 October 2025.

##### **Sea condition:**

Sea condition is very likely to be moderate to rough over Southeast and adjoining Eastcentral Arabian Sea, Lakshadweep & Comorin Area and along & off Karnataka, Kerala and adjoining South Tamil Nadu coasts on 18<sup>th</sup> & 19<sup>th</sup> October. It would become rough to very rough over central part of south Arabian sea and adjoining central Arabian Sea from 19<sup>th</sup> October evening till 21<sup>st</sup> October and over southwest and adjoining westcentral Arabian Sea on 22 October 2025.

##### **Fishermen warnings:**

Fishermen are advised not to venture into Southeast Arabian Sea, Lakshadweep & Comorin Area and along & off Karnataka, Kerala and adjoining South Tamilnadu coasts during 18<sup>th</sup> -20<sup>th</sup> October and southwest and adjoining west central Arabian Sea during 20 to 22 October 2025.

#### **Warning for Areas of Bay of Bengal and adjoining South Andaman Sea**

##### **Wind warning:**

Squally weather with wind speed reaching 30-40 gusting to 50 kmph is likely to prevail over Southeast Bay of Bengal and adjoining South Andaman Sea on 21<sup>st</sup> and 22<sup>nd</sup> October.

Squally wind with speed reaching 40-50 kmph gusting to 60 kmph over central parts of south Bay of Bengal and adjoining areas of central Bay of Bengal 22<sup>nd</sup> and 23<sup>rd</sup> October 2025.

##### **Sea conditions:**

Sea condition is likely to become rough to very rough over southeast Bay of Bengal and adjoining South Andaman Sea on 21<sup>st</sup> and 22<sup>nd</sup> October and over central parts of south Bay of Bengal and adjoining areas of central Bay of Bengal on 22<sup>nd</sup> and 23<sup>rd</sup> October.

##### **Fishermen Warning:**

Fishermen are advised not to venture into South and adjoining central Bay of Bengal from 21<sup>st</sup> afternoon onwards. Those fishermen out at sea should return to coast by 21<sup>st</sup> October.

#### **ii. Weather conditions and forecast over Delhi/NCR during 18<sup>th</sup> to 21<sup>st</sup> October, 2025 (ANNEXURE IV)**

**For more details, kindly refer National Weather Bulletin:**

[https://mausam.imd.gov.in/responsive/all\\_india\\_forecast\\_bulletin.php](https://mausam.imd.gov.in/responsive/all_india_forecast_bulletin.php)

**For District wise warnings refer:** <https://mausam.imd.gov.in/responsive/districtWiseWarningGIS.php>

**For Fishermen warning refer** <https://rsmcnewdelhi.imd.gov.in/fishermen-warning.php>

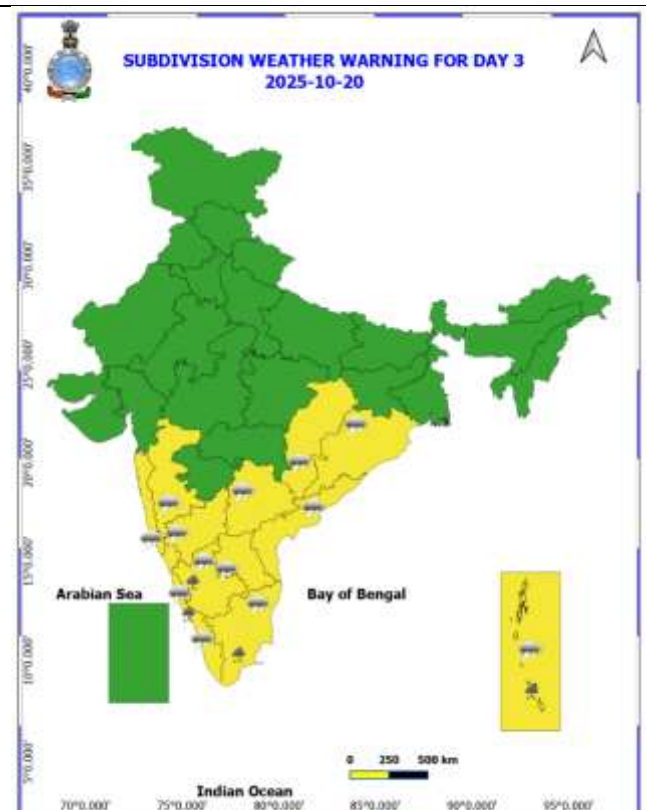
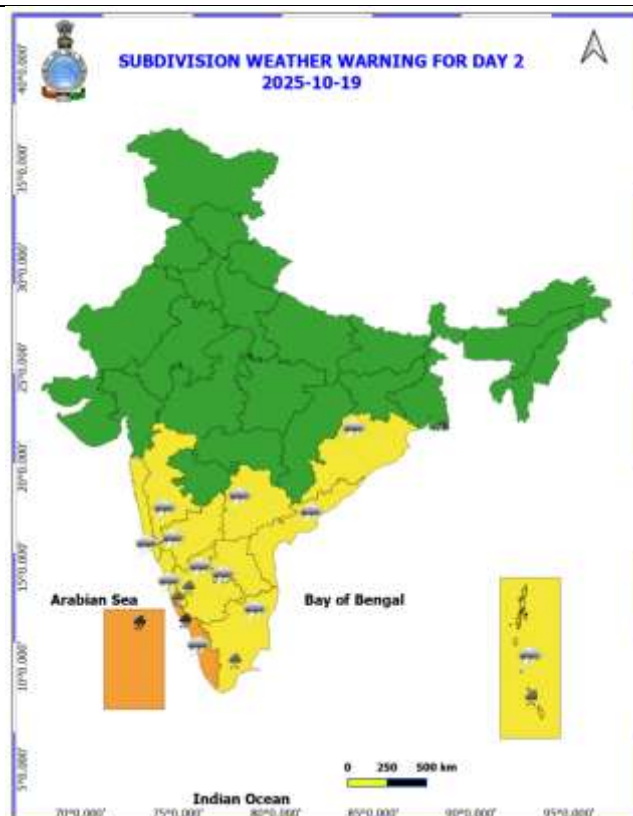
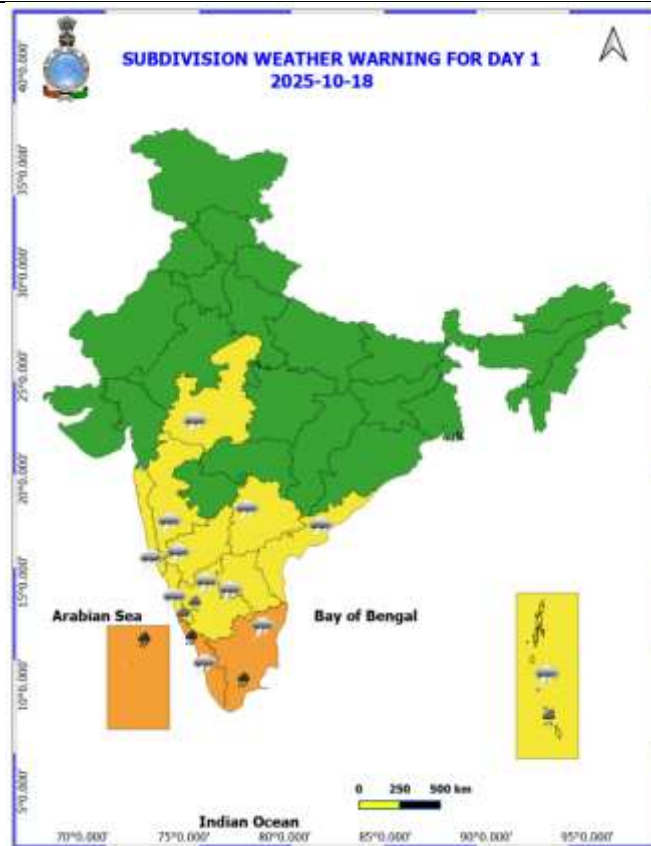
**Rainfall recorded (in cm) during past 24 hours till 0830 hours IST of today, the 18<sup>th</sup> October ( $\geq 7$ cm):**

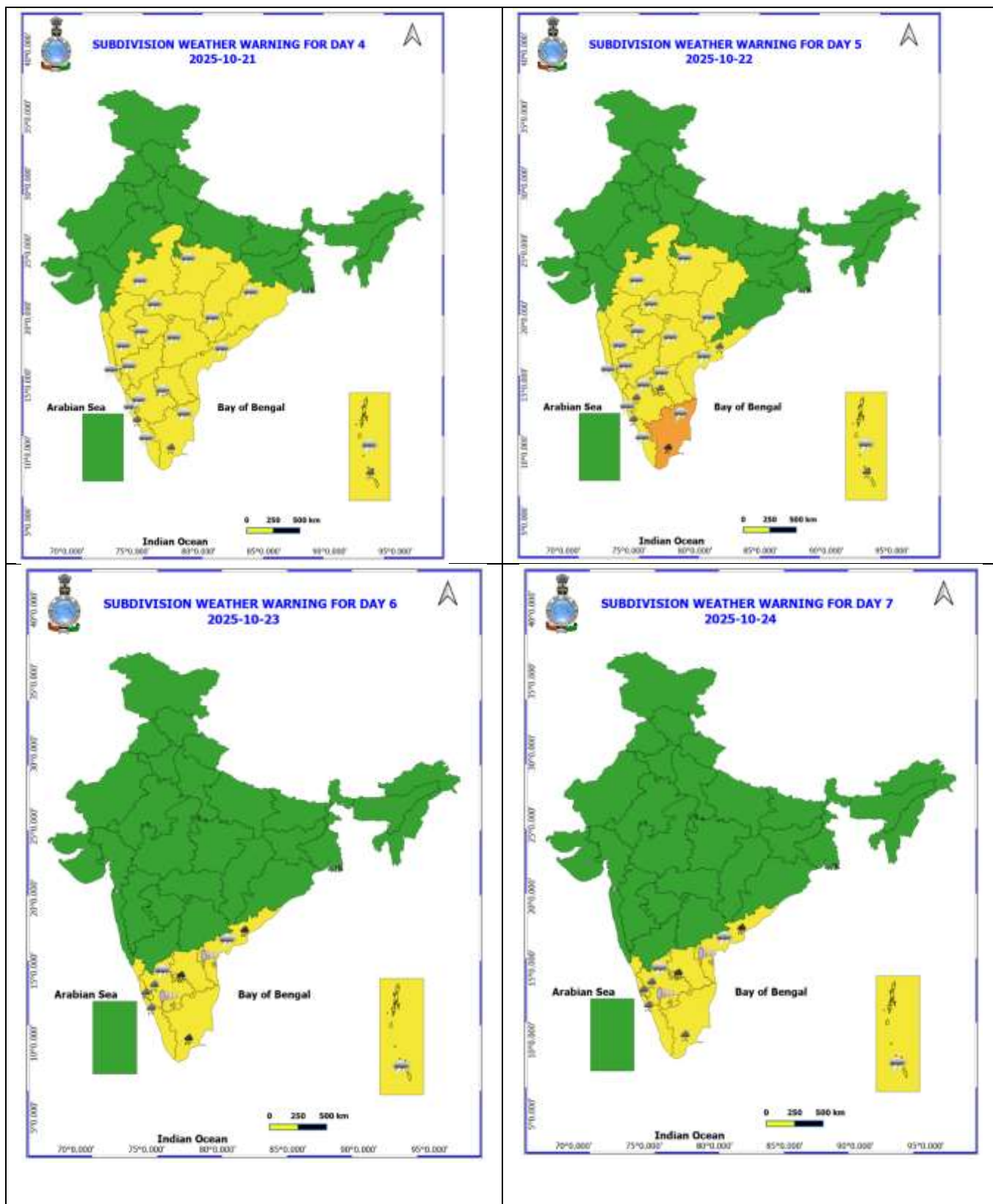
- ❖ **Tamil Nadu:** Rajapalayam (dist Virudhunagar) 18, Gummidipoondi (dist Tiruvallur), Thekkadi (dist Theni) 16 each, Ponneri (dist Tiruvallur) 14, Kayalpattinam (dist Thoothukudi), Coonoor PTO (dist The Nilgiris) 12 each, Alakarai Estate (dist The Nilgiris), Kalugumalai (dist Thoothukudi) 11 each, Nalumukku (dist Tirunelveli), Thenkasi (dist Tenkasi), Coonoor AWS (dist The Nilgiris), Shencottah (dist Tenkasi), Ayikudi (dist Tenkasi) 10 each, Shanmuganadhi (dist Theni), Coonoor (dist The Nilgiris), Vembakottai (dist Virudhunagar), Burliar (dist The Nilgiris), Kakkachi (dist Tirunelveli), Gundar Dam (dist Tenkasi), Mambzhathuraiyaru (dist Kanyakumari), Ramanadhi Dam Section (dist Tenkasi), Anaikedanku (dist Kanyakumari) 9 each, Adayamadai (dist Kanyakumari), Tenkasi AWS (dist Tenkasi), Zone 14 Medavakkam (dist Chennai), Manjolai (dist Tirunelveli), Gadana Dam (dist Tenkasi), Oothu (dist Tirunelveli), Mannargudi (dist Thiruvallur), Adar Estate (dist The Nilgiris), Kil Kotagiri Estate (dist The Nilgiris) 8 each, Sivagiri (dist Tenkasi), Taluk Office Pandalur (dist The Nilgiris), Tiruchendur (dist Thoothukudi), Tuticorin Rly Station ARG (dist Thoothukudi), Ayyampettai (dist Thanjavur), Billimalai Estate (dist The Nilgiris), Budalur (dist Thanjavur), Ottapadiram (dist Thoothukudi), Ramnadu KVK AWS (dist Ramanathapuram), Periyar (dist Theni), Mandapam (dist Ramanathapuram), Zone 01 Wimco Nagar (dist Chennai), Zone 01 Ennore (dist Chennai), Zone 02 Manali New Town (dist Chennai) 7 each;
- ❖ **Kerala:** Idukki 18; Myladumpara\_agri (dist Idukki) 9, Pampadumpara Aws (dist Idukki) 9, Thodupuzha (dist Idukki) 9, Vellanikkara (dist Thrissur) 8, Aryankavu (dist Kollam) 7, Neryamangalam Arg (dist Ernakulam) 7;
- ❖ **Lakshadweep:** Amini (dist Lakshadweep) 10, Agathi (dist Lakshadweep) 9;
- ❖ **Royalaseema:** Tada (dist Tirupati) 8.

Table-1								
7 Days Rainfall Forecast								
S.No.	Subdivision	18- Oct	19- Oct	20- Oct	21- Oct	22- Oct	23- Oct	24- Oct
		Day 1	Day 2	Day 3	Day 4	Day 5	Day 6	Day 7
1	ANDAMAN & NICOBAR ISLANDS	FWS	FWS	FWS	FWS	FWS	FWS	FWS
2	ARUNACHAL PRADESH	DRY	DRY	DRY	DRY	DRY	ISOL	ISOL
3	ASSAM & MEHGHALAYA	ISOL	DRY	DRY	DRY	ISOL	ISOL	ISOL
4	NAGALAND, MANIPUR, MIZORAM AND TRIPURA	ISOL	ISOL	ISOL	ISOL	ISOL	ISOL	ISOL
5	SUB HIMALAYAN WEST BENGAL & SIKKIM	ISOL	ISOL	DRY	DRY	ISOL	ISOL	ISOL
6	GANGETIC WEST BENGAL	ISOL	ISOL	DRY	DRY	DRY	DRY	DRY
7	ODISHA	DRY	ISOL	ISOL	ISOL	ISOL	ISOL	ISOL
8	JHARKHAND	DRY	DRY	ISOL	DRY	DRY	DRY	DRY
9	BIHAR	DRY	DRY	DRY	DRY	DRY	DRY	DRY
10	EAST UTTAR PRADESH	DRY	DRY	DRY	DRY	DRY	DRY	DRY
11	WEST UTTAR PRADESH	DRY	DRY	DRY	DRY	DRY	DRY	DRY
12	UTTARAKHAND	DRY	DRY	DRY	DRY	DRY	DRY	DRY
13	HARYANA, CHANDIGARH & DELHI	DRY	DRY	DRY	DRY	DRY	DRY	DRY
14	PUNJAB	DRY	DRY	DRY	DRY	DRY	DRY	DRY
15	HIMACHAL PRADESH	DRY	DRY	DRY	ISOL	ISOL	DRY	DRY
16	JAMMU AND KASHMIR AND LADAKH	DRY	DRY	DRY	ISOL	DRY	DRY	ISOL
17	WEST RAJASTHAN	DRY	DRY	DRY	DRY	DRY	DRY	DRY
18	EAST RAJASTHAN	DRY	DRY	DRY	DRY	DRY	DRY	DRY
19	WEST MADHYA PRADESH	ISOL	DRY	DRY	ISOL	ISOL	ISOL	ISOL
20	EAST MADHYA PRADESH	DRY	DRY	ISOL	SCT	SCT	SCT	ISOL
21	GUJRAT REGION	ISOL	ISOL	ISOL	ISOL	ISOL	ISOL	DRY
22	SAURASHTRA & KUTCH	DRY	DRY	DRY	DRY	DRY	DRY	DRY
23	KONKAN & GOA	ISOL	ISOL	ISOL	ISOL	ISOL	ISOL	ISOL
24	MADHYA MAHARASHTRA	ISOL	ISOL	ISOL	ISOL	ISOL	ISOL	ISOL
25	MARATHWADA	DRY	ISOL	ISOL	ISOL	ISOL	ISOL	ISOL
26	VIDARBHA	ISOL	DRY	ISOL	SCT	SCT	ISOL	ISOL
27	CHHATTISGARH	DRY	ISOL	ISOL	SCT	SCT	SCT	ISOL
28	COASTAL ANDHRA PRADESH	SCT	SCT	SCT	SCT	FWS	WS	FWS
29	TELANGANA	ISOL	ISOL	SCT	SCT	SCT	SCT	SCT
30	RAYALASEEMA	SCT	SCT	SCT	SCT	FWS	WS	FWS
31	TAMILNADU & PUDUCHERRY	WS	FWS	FWS	SCT	SCT	FWS	FWS
32	COSTAL KARNATAKA	SCT	FWS	WS	WS	WS	WS	WS
33	NORTH INTERIOR KARNATAKA	ISOL	ISOL	SCT	SCT	SCT	SCT	SCT
34	SOUTH INTERIOR KARNATAKA	FWS	FWS	FWS	FWS	WS	WS	WS
35	KERALA AND MAHE	WS	WS	WS	WS	WS	WS	WS
36	LAKSHADWEEP	WS	WS	WS	FWS	FWS	FWS	FWS

- As the lead period increases forecast accuracy decrease.







- Action may be taken based on ORANGE AND REDCOLOUR warnings.
- Vulnerable regions likely urban and hilly areas action may be initiated for heavy rainfall warning.
- As the lead period increases forecast accuracy decreases.

Detailed districtwise MultiHazard weather warning for next five days available at  
<https://mausam.imd.gov.in/responsive/districtWiseWarningGIS.php>

## Weather forecast over Delhi/NCR during 18<sup>th</sup> to 21<sup>th</sup> October 2025

### Past Weather:

There has been rise in the minimum temperature up to 1°C and no large change in maximum temperature over Delhi/NCR during the past 24 hours. The maximum and minimum temperatures over Delhi were around 30 to 32°C and 18 to 19°C respectively. The minimum temperature was below normal up to 1 – 2°C and maximum temperature was below normal up to 1 – 2°C. Mainly clear sky conditions with predominant surface wind from the northwest direction with wind speeds up to 10 kmph prevailed during the past 24 hours. Mainly clear sky conditions with haze/mist during early morning hour with calm wind in early morning hours as gradually increase becoming up to 10 kmph from the northwest direction prevailed over the region in the forenoon today.

### Weather Forecast:

**18.10.2025:** Mainly clear sky. The maximum and minimum temperatures over Delhi are likely to be in the range of 32 to 34°C. The maximum temperature will be above normal up to 1 – 2°C. The predominant surface wind will likely to be from the northeast direction with a wind speed of up to 05 -10 kmph during afternoon hours. The wind speed will decrease becoming less than 08 kmph from the northeast direction during the evening and night.

**19.10.2025:** Smog/shallow fog is likely at many places during morning hours becoming mainly clear sky with mist/haze from noon onwards. The maximum and minimum temperatures over Delhi are likely to be in the range of 32 to 34°C and 18 to 20°C respectively. The minimum temperature will be above normal up to 1 – 2°C and the maximum temperature will be above normal up to 1 – 2°C. The predominant surface wind will likely to be from the northeast direction with a wind speed of up to 06 kmph during morning hours. The wind speed will gradually increase becoming less than 15 kmph from the north direction in the afternoon. The wind speed will decrease becoming less than 06 kmph from the northeast direction during the evening and night.

**20.10.2025:** Smog/shallow fog is likely at many places during morning hours becoming mainly clear sky with mist/haze from noon onwards. The maximum and minimum temperatures over Delhi are likely to be in the range of 31 to 33°C and 18 to 20°C respectively. The minimum temperature will be above normal up to 1 – 2°C and the maximum temperature will be near normal. The predominant surface wind will likely to be from the southeast direction with a wind speed of up to 06 kmph during morning hours. The wind speed will increase becoming less than 10 kmph from the southeast direction in the afternoon. The wind speed will gradually decrease becoming less than 08 kmph from the northeast direction during the evening and night.

**21.10.2025:** Smog/shallow fog is likely at many places during morning hours becoming mainly clear sky with mist/haze from noon onwards. The maximum and minimum temperatures over Delhi are likely to be in the range of 30 to 32°C and 19 to 21°C respectively. The minimum temperature will be above normal up to 1 – 2°C and the maximum temperature will be near normal. The predominant surface wind will likely to be from the southeast direction with a wind speed of up to 10 kmph during morning hours. The wind speed will increase becoming less than 06 kmph from the southeast direction in the afternoon. The wind speed will gradually decrease becoming less than 06 kmph from the east direction during the evening and night.

### Impact & Action Suggested due to

- ❖ **Very heavy rainfall** at isolated places over interior Tamil Nadu on 18<sup>th</sup>; north Tamil Nadu & adjoining coastal Tamil Nadu on 22<sup>nd</sup> & 23<sup>rd</sup>; Kerala & Mahe and Lakshadweep on 18<sup>th</sup> & 19<sup>th</sup>; south Coastal Andhra Pradesh & Yanam and Rayalaseema on 23<sup>rd</sup> & 24<sup>th</sup> October.

### Impact Expected

- Localized Flooding of roads, water logging in low lying areas and closure of underpasses mainly in urban areas of the above region.
- Occasional reduction in visibility due to heavy rainfall.
- Disruption of traffic in major cities due to water logging in roads leading to increased travel time.
- Minor damage to kutchha roads.
- Possibilities of damage to vulnerable structure.
- Localized Landslides/Mudslides/landslips/mudslips/landsinks/mudsinks.
- Damage to horticulture and standing crops in some areas due to inundation.

- It may lead to riverine flooding in some river catchments mainly over Bihar, Jharkhand and West Bengal (for riverine flooding please visit Web page of CWC)

#### Action Suggested

- Check for traffic congestion on your route before leaving for your destination.
- Follow any traffic advisories that are issued in this regard.
- Avoid going to areas that face the water logging problems often.
- Avoid staying in vulnerable structure.

#### Agromet advisories for likely impact of Heavy / Heavy to Very Heavy Rainfall

- In **Tamil Nadu**, store the harvested produce of rice and groundnut in safer places. Drain out excess water from fields of rice, cotton, black gram, maize, tapioca and vegetables and plantations of coconut, banana and black pepper to avoid water stagnation.
- In **Kerala**, keep the harvested produce of rice in safer places. Drain out excess water from fields of rice, vegetables and plantations of banana, coconut, arecanut, cardamom and black pepper.
- In **South Interior Karnataka**, keep the harvested produce of groundnut and maize in dry, covered and ventilated areas or cover with tarpaulins in the fields. Harvest matured crops such as rice, pulses, vegetables, cardamom and coffee during dry intervals and store the harvested produce in well-ventilated and moisture-free places. Make necessary arrangements to drain out excess water from fields of rice, maize, finger millet, pulses, groundnut and vegetables and plantations of banana, black pepper, cardamom, coffee, coconut and arecanut to avoid waterlogging.

#### Livestock / Fishery

- Keep the animals inside the shed during heavy rainfall and provide them balanced feed.
- Store feed and fodder in a safe place to prevent spoilage.
- Construct an outlet with proper netting around the ponds to drain out excess water, thereby preventing fish from escaping in case of overflow.

#### Agromet advisories for likely impact of Thunderstorm / Gusty Winds / Squally Winds

- Provide mechanical support to horticultural crops and staking or support to vegetables and young fruit plants / fruit-bearing plants to avoid lodging due to strong winds.
- Tie the harvested crops properly and cover them to minimise the risk of displacement due to strong surface winds.

#### Legends & abbreviations:

- ❖ **Heavy Rain:** 64.5-115.5mm; **Very Heavy Rain:** 115.6-204.4mm; **Extremely Heavy Rain:** >204.4mm.
- ❖ **Obsy:** Observatory; **Automatic Weather Station;** **ARG:** Automatic Rain Gauge; **dist:** District; **NH:** National Highway; **KVK:** Krishi Vigyan Kendra; **DVC:** Damodar Valley Corporation; **PTO:** Part Time Office, **Aero:** Aerodrome, **IAF:** Indian Air Force.
- ❖ **Region wise classification of meteorological Sub-Divisions:**
  - **Northwest India:** Western Himalayan Region (Jammu-Kashmir-Ladakh-Gilgit-Baltistan-Muzaffarabad, Himachal Pradesh and Uttarakhand); Punjab, Haryana-Chandigarh-Delhi; West Uttar Pradesh, East Uttar Pradesh, West Rajasthan and East Rajasthan.
  - **Central India:** West Madhya Pradesh, East Madhya Pradesh, Vidarbha and Chhattisgarh.
  - **East India:** Bihar, Jharkhand, Sub-Himalayan West Bengal & Sikkim; Gangetic West Bengal, Odisha and Andaman & Nicobar Islands.
  - **Northeast India:** Arunachal Pradesh, Assam & Meghalaya and Nagaland, Manipur, Mizoram & Tripura.
  - **West India:** Gujarat Region, Saurashtra & Kutch, Konkan & Goa, Madhya Maharashtra and Marathawada.
  - **South India:** Coastal Andhra Pradesh & Yanam, Telangana, Rayalaseema, Coastal Karnataka, North Interior Karnataka, South Interior Karnataka, Kerala & Mahe, Tamil Nadu, Puducherry & Karaikal and Lakshadweep.



## LEGENDS

1. अंडमान और निकोबार द्वीपसमूह

2. अरुणाचल प्रदेश

3. असम और मेघालय

4. नागालैंड, मणिपुर, मिजोरम और त्रिपुरा

5. उप-हिमालयी पश्चिम बंगाल और सिक्किम

6. गंगीय पश्चिम बंगाल

7. ओडिशा

8. झारखंड

9. बिहार

10. पूर्वी उत्तर प्रदेश

11. पश्चिम उत्तर प्रदेश

12. उत्तराखंड

13. हरियाणा, चंडीगढ़ और दिल्ली

14. पंजाब

15. हिमाचल प्रदेश

16. जम्मू और कश्मीर और लद्दाख

17. पश्चिम राजस्थान

18. पूर्वी राजस्थान

19. पश्चिम मध्य प्रदेश

20. पूर्वी मध्य प्रदेश

21. गुजरात

22. सौराष्ट्र

23. कोंकण और गोवा

24. मध्य महाराष्ट्र

25. मराठवाड़ा

26. विदर्भ

27. छत्तीसगढ़

28. तटीय आंध्र प्रदेश और यनम

29. तेलंगाना

30. रायलसीमा

31. तमिलनाडु, पुडुचेरी और कराईकल

32. तटीय कर्नाटक

33. आंतरिक उत्तरी कर्नाटक

34. आंतरिक दक्षिणी कर्नाटक

35. केरल और माहे

36. लक्षद्वीप



1. Andaman & Nicobar Islands

2. Arunachal Pradesh

3. Assam & Meghalaya

4. Nagaland, Manipur, Mizoram & Tripura

5. Sub-Himalayan West Bengal & Sikkim

6. Gangetic West Bengal

7. Odisha

8. Jharkhand

9. Bihar

10. East Uttar Pradesh

11. West Uttar Pradesh

12. Uttarakhand

13. Haryana, Chandigarh & Delhi

14. Punjab

15. Himachal Pradesh

16. Jammu & Kashmir and Ladakh

17. West Rajasthan

18. East Rajasthan

19. West Madhya Pradesh

20. East Madhya Pradesh

21. Gujarat

22. Saurashtra

23. Konkan & Goa

24. Madhya Maharashtra

25. Marathwada

26. Vidarbha

27. Chhattisgarh

28. Coastal Andhra Pradesh & Yanam

29. Telangana

30. Rayalaseema

31. Tamilnadu, Puducherry & Karaikal

32. Coastal Karnataka

33. North Interior Karnataka

34. South Interior Karnataka

35. Kerala & Mahe

36. Lakshadweep

## SPATIAL DISTRIBUTION (% of Stations reporting)

% Stations	Category	% Stations	Category
76-100	Widespread (WS/Most Places)	26-50	Scattered (SCT/A Few Places)
51-75	Fairly Widespread (FWS/Many Places)	1-25	Isolated (ISOL)



Fog



Heavy Snow



Cold Wave



Heavy Rain



Dust Storm



Cold Day



Very Heavy Rain



Heat Wave



Ground Frost



Extremely Heavy Rain



Warm Night



Thunder & Lightning



Hot Day



Hailstorm



Hot & Humid



Dust Raising Winds



Strong Surface Winds

### COLOUR CODED WARNING

No Warning (No Action)

Watch (Be Aware)

Alert (Be Prepared To Take Action)

Warning (Take Action)

### Probabilistic Forecast

Terms	Probability of Occurrence (%)
Unlikely	< 25
Likely	25 - 50
Very Likely	50 - 75
Most Likely	> 75

\* Red colour warning does not mean "Red Alert", Red colour warning means "Take Action".

Forecast and Warning for any day is valid from 0830 hours IST of day till 0830 hours IST of next day.

For more details, kindly visit <https://mausam.imd.gov.in> or contact: 011-2434-4599

(Service to the Nation since 1875)

## DEFINITION/CRITERIA

### Rain/ Snow \*

Heavy: 64.5 to 115.5 mm/cm \*  
Very Heavy: 115.6 to 204.4 mm/cm \*  
Extremely Heavy: > 204.4 mm/cm \*

### Heat Wave

When maximum temperature of a station reaches  $\geq 40^{\circ}\text{C}$  for plains and  $\geq 30^{\circ}\text{C}$  for hilly regions  
(a) Based on Departure from normal

Heat Wave: Maximum Temperature Departure from normal  $4.5^{\circ}\text{C}$  to  $6.4^{\circ}\text{C}$ .

Severe Heat Wave: Maximum Temperature Departure from normal  $\geq 6.5^{\circ}\text{C}$

(b). Based on Actual maximum temperature

Heat Wave: When actual maximum temperature  $\geq 45^{\circ}\text{C}$ .

Severe Heat Wave: When actual maximum temperature  $\geq 47^{\circ}\text{C}$ .

(c). Criteria for heat wave for coastal stations

When maximum temperature departure is  $> 4.5^{\circ}\text{C}$  from normal. Heat Wave may be described provided maximum temperature  $\geq 37^{\circ}\text{C}$ .

### Warm Night

When maximum temperature remains  $40^{\circ}\text{C}$

Warm Night: When minimum temperature departure  $4.5^{\circ}\text{C}$  to  $6.4^{\circ}\text{C}$ .

Severe Warm Night: When minimum temperature departure  $> 6.4^{\circ}\text{C}$ .

### Cold Wave

When minimum temperature of a station  $\leq 10^{\circ}\text{C}$  for plains and  $\leq 0^{\circ}\text{C}$  for hilly regions.

(a). Based on departure

Cold Wave: Minimum Temperature Departure from normal  $-4.5^{\circ}\text{C}$  to  $-6.4^{\circ}\text{C}$ .

Severe Cold Wave: Minimum Temperature Departure from normal  $\leq -6.5^{\circ}\text{C}$

(b) Based on actual Minimum Temperature (for Plains only)

Cold Wave: When Minimum Temperature is  $\leq 4.0^{\circ}\text{C}$

Severe Cold Wave: When Minimum Temperature is  $\leq 2.0^{\circ}\text{C}$

(c) For Coastal Stations

When Minimum Temperature departure is  $\leq -4.5^{\circ}\text{C}$  & actual Minimum Temperature is  $\leq 15^{\circ}\text{C}$

### Cold Day

When minimum temperature of a station  $\leq 10^{\circ}\text{C}$  for plains and  $\leq 0^{\circ}\text{C}$  for hilly regions

Based on departure

Cold Day: Maximum Temperature Departure from normal  $-4.5^{\circ}\text{C}$  to  $-6.4^{\circ}\text{C}$ .

Severe Cold Day: Maximum Temperature Departure from normal  $\leq -6.5^{\circ}\text{C}$

### Fog

Phenomenon of small droplets suspended in air and the horizontal visibility  $< 1\text{km}$

Moderate Fog: When the visibility between 500-200 metres

Dense Fog: when the visibility between 50- 200 metres

Very Dense Fog: when the visibility  $< 50$  metres

### Thunderstorm

Sudden electrical discharges manifested by a flash of light (Lightning) and a sharp rumbling sound (thunder)

### Dust/Sand Storm

An ensemble of particles of dust or sand energetically lifted to great heights by a strong and turbulent wind.

### Frost

Ice deposits on ground

Air temperature  $\leq 4^{\circ}\text{C}$  ( over Plains)

### Squall

A strong wind that rises suddenly, lasts for atleast 1 minute.

Moderate: Wind speed 52-61 kmph

Severe: Wind speed 62-67 kmph

Very Severe: Wind speed  $> 67$  kmph

### Sea State

Effect of various waves in the sea over specific area

Rough to very rough: Wind speed 41-62 kmph (22-33 knots) & Wave height 2.5-6 metre

High to very high: Wind speed 63-117 kmph ( 34-63 knots) & Wave height 6-14 metre

Phenomenal: Wind speed  $> 117$  kmph ( $> 63$  knots) & Wave height  $> 14$  metre

### Cyclone

Cyclonic Storm: Wind speed 62-87 kmph (34-47 knots)

Severe Cyclonic Storm: Wind speed 88-117 kmph (48-63 knots)

Very Severe Cyclonic Storm: Wind speed 118-165 kmph (64 - 89 knots)

Extremely Severe Cyclonic Storm: Wind speed 166-220 kmph (90 -119 knots)

Super Cyclone Storm: Wind speed  $> 220$  kmph ( $> 119$  knots)

\* Red colour warning does not mean "Red Alert", Red colour warning means "Take Action".

Forecast and Warning for any day is valid from 0830 hours IST of day till 0830 hours IST of next day.

For more details, kindly visit <https://mausam.imd.gov.in> or contact: 011-2434-4599

(Service to the Nation since 1875)