



**Government of India
Ministry of Earth Sciences
India Meteorological Department**



Press Release

Date: 09th November, 2025

Time of Issue: 1300 hours IST

**Subject: (i) Cold wave conditions very likely to prevail in isolated pockets of East Rajasthan on 09th; Madhya Pradesh, Chhattisgarh and Jharkhand during 09th -11th November.
(ii) Night temperatures below normal by about 2-4°C over south Haryana and isolated plains of northwest India & North Madhya Maharashtra during 4-5 days.
(iii) Isolated heavy rainfall very likely over Tamil Nadu during 09th, 12th & 13th, and over Kerala & Mahe on 09th & 10th November.**

Realised weather during past 24 hours ending at 0830 hours IST of today, the 09th November, 2025:

- ❖ **Cold wave to severe cold wave conditions** prevailed in isolated pockets of West Madhya Pradesh and **cold wave conditions** in isolated pockets of East Rajasthan.

Weather Systems, Forecast and Warnings (refer to ANNEXURE I & II):

- ❖ The upper air cyclonic circulation lay over eastcentral Bay of Bengal in middle tropospheric level.
- ❖ The upper air cyclonic circulation lay over Southwest Bangladesh & adjoining Gangetic West Bengal in middle tropospheric level.
- ❖ An upper air cyclonic circulation lay over North Tamil Nadu & neighbourhood in middle tropospheric level.
- ❖ The Western Disturbance as a cyclonic circulation over North Haryana with a trough aloft in middle tropospheric westerlies with its axis at 5.8 km above mean sea level now runs roughly along Long. 78°E to the north of Lat. 32°N.

Under the influence of these systems, the following weather is likely:

- ❖ Light to moderate rainfall/thunderstorm at most/many places with **isolated heavy rainfall** very likely over Tamil Nadu during 09th, 12th & 13th, and over Kerala & Mahe on 09th & 10th November.
- ❖ Thunderstorm with lightning very likely over Tamil Nadu during 09th -13th and over Kerala & Mahe on 09th & 10th November.
- ❖ No significant weather likely over rest parts of the country during the week.

Forecast of temperature and cold wave warnings:

- ❖ **Cold wave conditions** very likely to prevail in isolated pockets of East Rajasthan on 09th; Madhya Pradesh, Chhattisgarh and Jharkhand during 09th -11th November.
- ❖ Night temperatures below normal by about 2-4°C over south Haryana and isolated plains of northwest India & North Madhya Maharashtra during 4-5 days.
- ❖ Fall in minimum temperature by 2-3°C over Northeast India during next 2-3 days.

ii) Weather conditions and forecast over Delhi/NCR during 09th -12th November, 2025 (ANNEXURE III)

For more details, kindly refer National Weather Bulletin:

https://mausam.imd.gov.in/responsive/all_india_forecast_bulletin.php

For District wise warnings refer: <https://mausam.imd.gov.in/responsive/districtWiseWarningGIS.php>

For Fishermen warning refer <https://rsmcnewdelhi.imd.gov.in/fishermen-warning.php>

Significant rainfall recorded(in cm) (from 0830 hours IST of yesterday to 0830 hours IST of today):

Coastal Karnataka: Sulya (dist Dakshina Kannada) 12;

Tamil Nadu, Puducherry & Karaikal: Sivagiri (dist Tenkasi), Chittampatti (dist Madurai), Tirupuvanam (dist Sivagangai) 4 each, Madurai Airport (dist Madurai), Tirumangalam (dist Madurai), Bhoothapandy (dist Kanyakumari) 3 each;

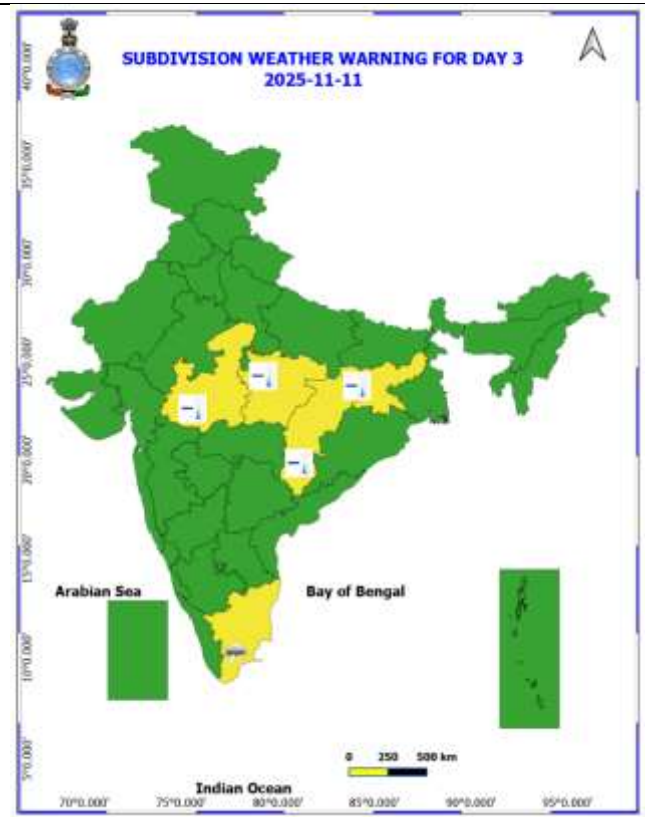
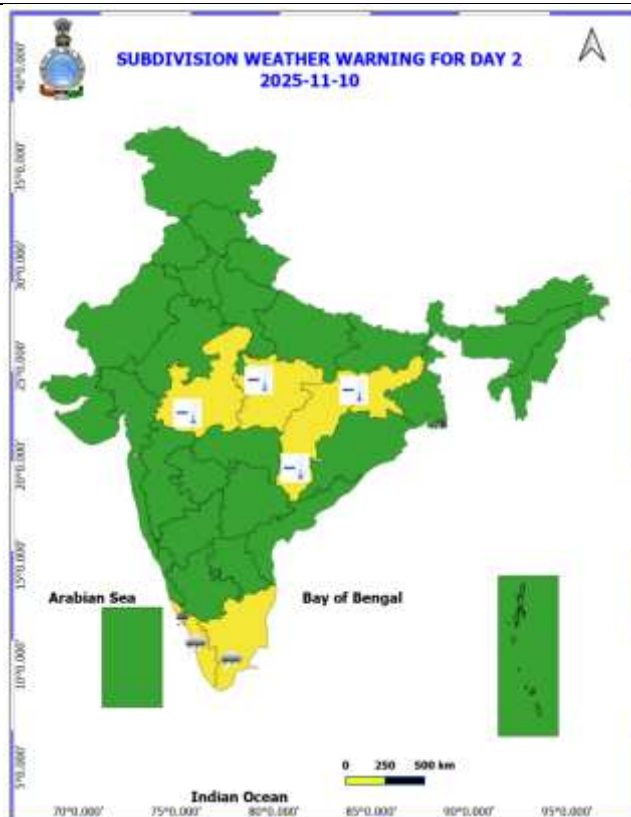
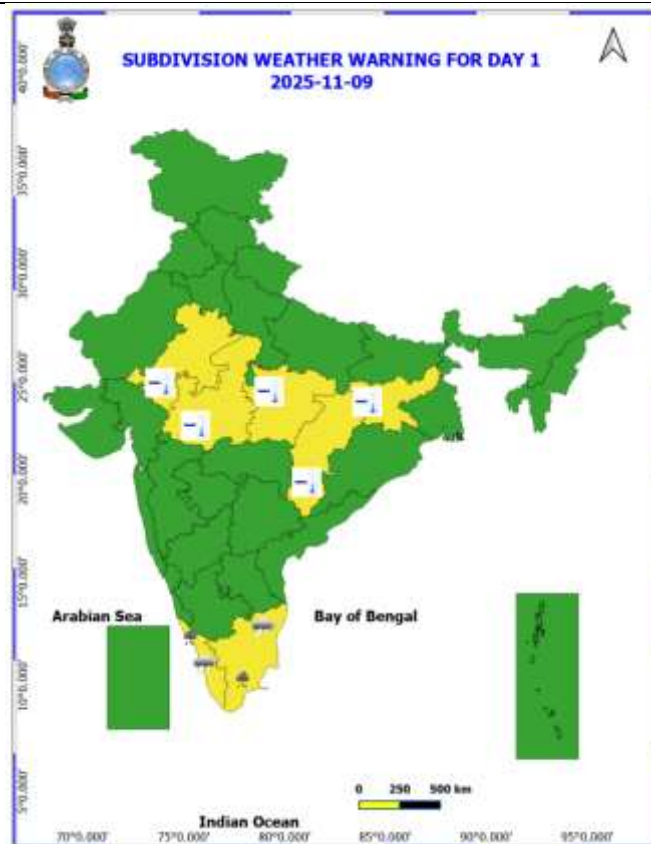
Kerala & Mahe: Laha (dist Pathanamthitta) 4, Mattanchery (dist Ernakulam) 3, Vellathooval (dist Idukki) 3, Koothattukulam (dist Ernakulam) 3, Ernakulam (dist Ernakulam) 3.

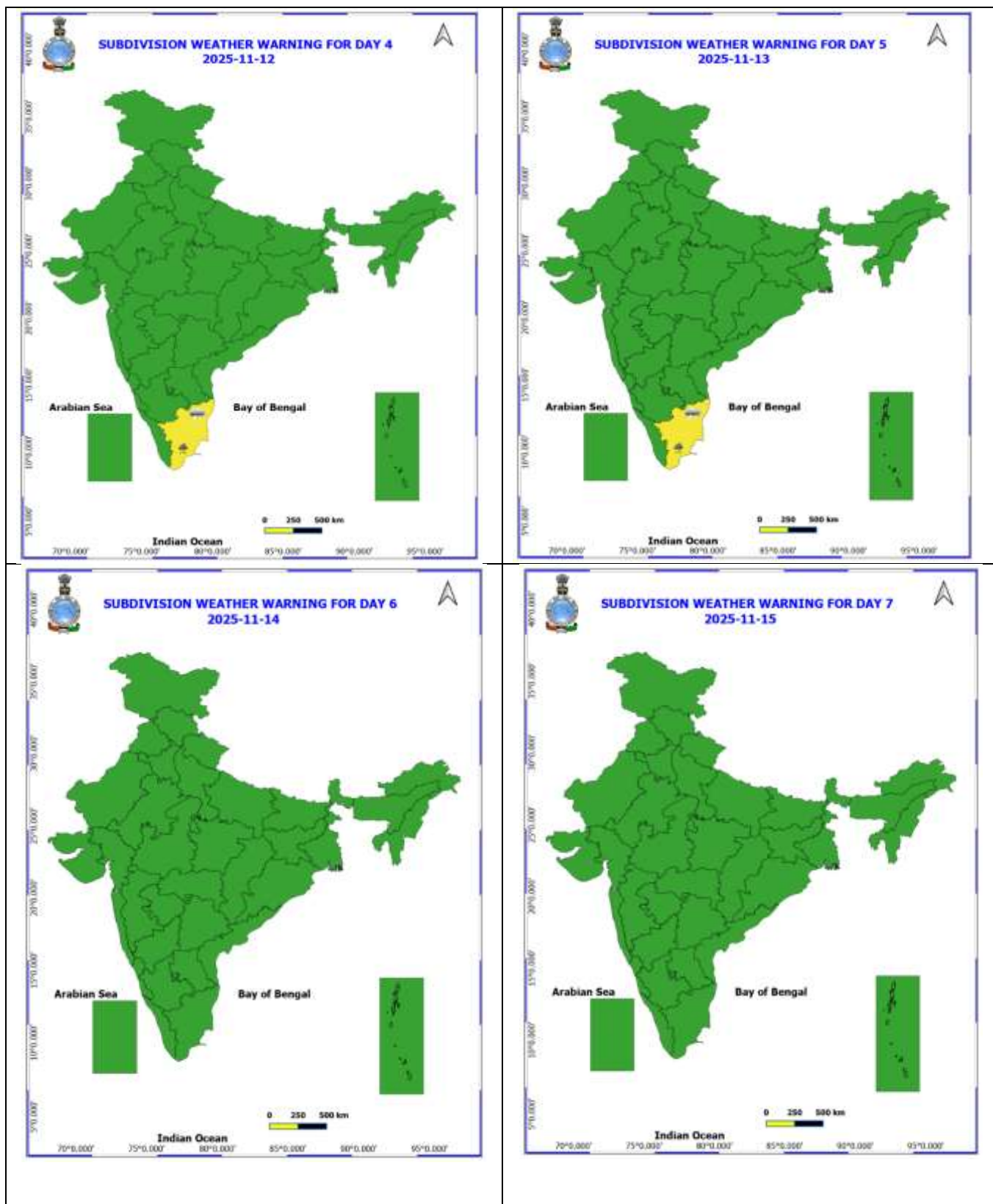
ANNEXURE I

Table-1								
7 Days Rainfall Forecast								
S.No.	Subdivision	9- Nov	10- Nov	11- Nov	12- Nov	13- Nov	14- Nov	15- Nov
		Day 1	Day 2	Day 3	Day 4	Day 5	Day 6	Day 7
1	ANDAMAN & NICOBAR ISLANDS	SCT	SCT	SCT	SCT	SCT	SCT	FWS
2	ARUNACHAL PRADESH	DRY	DRY	DRY	DRY	DRY	DRY	DRY
3	ASSAM & MEHGHALAYA	DRY	DRY	DRY	DRY	DRY	DRY	DRY
4	NAGALAND, MANIPUR, MIZORAM AND TRIPURA	DRY	DRY	DRY	DRY	DRY	DRY	DRY
5	SUB HIMALAYAN WEST BENGAL & SIKKIM	DRY	DRY	DRY	DRY	DRY	DRY	DRY
6	GANGETIC WEST BENGAL	DRY	DRY	DRY	DRY	DRY	DRY	DRY
7	ODISHA	DRY	DRY	DRY	DRY	DRY	DRY	DRY
8	JHARKHAND	DRY	DRY	DRY	DRY	DRY	DRY	DRY
9	BIHAR	DRY	DRY	DRY	DRY	DRY	DRY	DRY
10	EAST UTTAR PRADESH	DRY	DRY	DRY	DRY	DRY	DRY	DRY
11	WEST UTTAR PRADESH	DRY	DRY	DRY	DRY	DRY	DRY	DRY
12	UTTARAKHAND	DRY	DRY	DRY	DRY	DRY	DRY	DRY
13	HARYANA, CHANDIGARH & DELHI	DRY	DRY	DRY	DRY	DRY	DRY	DRY
14	PUNJAB	DRY	DRY	DRY	DRY	DRY	DRY	DRY
15	HIMACHAL PRADESH	DRY	DRY	DRY	DRY	DRY	DRY	DRY
16	JAMMU AND KASHMIR AND LADAKH	DRY	DRY	DRY	DRY	DRY	DRY	DRY
17	WEST RAJASTHAN	DRY	DRY	DRY	DRY	DRY	DRY	DRY
18	EAST RAJASTHAN	DRY	DRY	DRY	DRY	DRY	DRY	DRY
19	WEST MADHYA PRADESH	DRY	DRY	DRY	DRY	DRY	DRY	DRY
20	EAST MADHYA PRADESH	DRY	DRY	DRY	DRY	DRY	DRY	DRY
21	GUJRAT REGION	DRY	DRY	DRY	DRY	DRY	DRY	DRY
22	SAURASHTRA & KUTCH	DRY	DRY	DRY	DRY	DRY	DRY	DRY
23	KONKAN & GOA	DRY	DRY	DRY	DRY	DRY	DRY	DRY
24	MADHYA MAHARASHTRA	DRY	DRY	DRY	DRY	DRY	DRY	DRY
25	MARATHWADA	DRY	DRY	DRY	DRY	DRY	DRY	DRY
26	VIDARBHA	DRY	DRY	DRY	DRY	DRY	DRY	DRY
27	CHHATTISGARH	DRY	DRY	DRY	DRY	DRY	DRY	DRY
28	COASTAL ANDHRA PRADESH	ISOL	ISOL	ISOL	ISOL	ISOL	DRY	DRY
29	TELANGANA	DRY	DRY	DRY	DRY	DRY	DRY	DRY
30	RAYALASEEMA	ISOL	ISOL	ISOL	ISOL	ISOL	DRY	DRY
31	TAMILNADU & PUDUCHERRY	ISOL	ISOL	ISOL	SCT	SCT	ISOL	ISOL
32	COSTAL KARNATAKA	DRY	DRY	DRY	DRY	DRY	DRY	DRY
33	NORTH INTERIOR KARNATAKA	DRY	DRY	DRY	DRY	DRY	DRY	DRY
34	SOUTH INTERIOR KARNATAKA	DRY	DRY	DRY	DRY	ISOL	DRY	DRY
35	KERALA AND MAHE	SCT	SCT	SCT	SCT	SCT	SCT	SCT
36	LAKSHADWEEP	SCT	SCT	SCT	SCT	SCT	SCT	SCT

- As the lead period increases forecast accuracy decrease.

ANNEXURE II





- Action may be taken based on ORANGE AND REDCOLOUR warnings.
- Vulnerable regions likely urban and hilly areas action may be initiated for heavy rainfall warning.
- As the lead period increases forecast accuracy decreases.

Detailed districtwise Multi Hazard weather warning for next five days available at
<https://mausam.imd.gov.in/responsive/districtWiseWarningGIS.php>

Weather forecast over Delhi/NCR during 09th to 12th November 2025**Past Weather:**

There has been no large change in minimum temperatures and fall in maximum temperatures upto 1°C during past 24 hours over Delhi. The maximum and minimum temperatures over Delhi were around 25 to 27°C and 10 to 12°C respectively. The minimum temperatures were below normal by 2 - 5°C and maximum temperatures were below normal by 2 - 4°C. Mainly clear sky conditions with predominant surface wind from the northwest direction with a wind speed up to 16 kmph prevailed during the past 24 hours. Mainly clear sky conditions with a wind speed of up to 10 kmph from the southwest direction prevailed over the region in the forenoon today.

Weather Forecast:

09.11.2025: Mainly clear sky. Mist/haze from evening onwards. The maximum temperatures were in the range of 26 to 28°C. The maximum temperature will be below normal up to 1 - 2°C. The predominant surface wind will likely to be from the northwest direction with a wind speed of up to 20 kmph during afternoon hours. The wind speed will decrease becoming less than 10 kmph from the northwest direction during the evening and night.

10.11.2025: Mainly clear sky with smog/shallow fog during morning hours. The maximum and minimum temperatures over Delhi are likely to be in the range of 27 to 29°C and 10 to 12°C respectively. The minimum temperature will be below normal up to 2 - 4°C and the maximum temperature will be below normal up to 1 - 2°C. The predominant surface wind will likely to be from the west direction with a wind speed up to 10 kmph during morning hours. The wind speed will gradually increase becoming up to 15 kmph from the northwest direction in the afternoon. The wind speed will decrease becoming less than 10 kmph from the northwest direction during the evening and night.

11.11.2025: Mainly clear sky with smog/shallow fog during morning hours. The maximum and minimum temperatures over Delhi are likely to be in the range of 27 to 29°C and 10 to 12°C respectively. The minimum temperature will be below normal up to 2 - 4°C and the maximum temperature will be below normal up to 1 - 2°C. The predominant surface wind will likely to be from the west direction with a wind speed up to 10 kmph during morning hours. The wind speed will gradually increase becoming up to 20 kmph from the northwest direction in the afternoon. The wind speed will decrease becoming less than 10 kmph from the northwest direction during the evening and night.

12.11.2025: Mainly clear sky with smog/shallow fog during morning hours. The maximum and minimum temperatures over Delhi are likely to be in the range of 26 to 28°C and 10 to 12°C respectively. The minimum temperature will be below normal up to 1 - 3°C and the maximum temperature will be below normal up to 1 - 2°C. The predominant surface wind will likely to be from the northwest direction with a wind speed up to 10 kmph during morning hours. The wind speed will increase becoming less than 20 kmph from the northwest direction in the afternoon. The wind speed will decrease becoming less than 10 kmph from the northwest direction during the evening and night.

Agromet advisories for likely impact of Heavy Rainfall

- In **Tamil Nadu**, harvest matured rice and groundnut crops only during clear weather and store the harvested produce in safer places. Make arrangements to drain out excess water from fields of rice, sugarcane, cotton, black gram, maize and vegetables and plantations of coconut, banana and black pepper to avoid water stagnation. Provide support to banana plants with wooden poles to prevent them from falling.
- In **East Rajasthan, Madhya Pradesh, North Chhattisgarh and North-West Jharkhand**, apply light and frequent irrigation to the standing crops in the evening to protect the crops from low temperature stress or cold injuries. Use mulching and cover vegetable nurseries and young fruit plants with straw / polythene sheets to maintain optimum soil temperature.

Livestock / Fishery

- Keep the animals inside the shed during heavy rainfall and provide them balanced feed.
- Store feed and fodder in a safe place to prevent spoilage.
- Construct an outlet with proper netting around the ponds to drain out excess water, thereby preventing fish from escaping in case of overflow.
- Keep cattle inside the sheds during night and provide dry bedding to protect them from cold.

Agromet advisories for likely impact of Thunderstorm / Gusty Winds

- Provide mechanical support to horticultural crops and staking or support to vegetables and young fruit plants / fruit-bearing plants to avoid lodging due to strong winds.

Legends & abbreviations:

- ❖ **Heavy Rain:**64.5-115.5mm; **Very Heavy Rain:**115.6-204.4mm; **Extremely Heavy Rain:** >204.4mm.
- ❖ **Obsy:** Observatory; Automatic Weather Station; **ARG:** Automatic Rain Gauge; **dist:** District; **NH:** National Highway; **KVK:** Krishi Vigyan Kendra; **DVC:** Damodar Valley Corporation; **PTO:** Part Time Office, **Aero:** Aerodrome, **IAF:** Indian Air Force.
- ❖ **Region wise classification of meteorological Sub-Divisions:**
 - **Northwest India:** Western Himalayan Region (Jammu-Kashmir-Ladakh-Gilgit-Baltistan-Muzaffarabad, Himachal Pradesh and Uttarakhand); Punjab, Haryana-Chandigarh-Delhi; West Uttar Pradesh, East Uttar Pradesh, West Rajasthan and East Rajasthan.
 - **Central India:** West Madhya Pradesh, East Madhya Pradesh, Vidarbha and Chhattisgarh.
 - **East India:** Bihar, Jharkhand, Sub-Himalayan West Bengal & Sikkim; Gangetic West Bengal, Odisha and Andaman & Nicobar Islands.
 - **Northeast India:** Arunachal Pradesh, Assam & Meghalaya and Nagaland, Manipur, Mizoram & Tripura.
 - **West India:** Gujarat Region, Saurashtra & Kutch, Konkan & Goa, Madhya Maharashtra and Marathawada.
 - **South India:** Coastal Andhra Pradesh & Yanam, Telangana, Rayalaseema, Coastal Karnataka, North Interior Karnataka, South Interior Karnataka, Kerala & Mahe, Tamil Nadu, Puducherry & Karaikal and Lakshadweep.

LEGENDS

1. अंडमान और निकोबार द्वीपसमूह

2. अरुणाचल प्रदेश

3. असम और मेघालय

4. नागालैंड, मणिपुर, मिजोरम और त्रिपुरा

5. उप-हिमालयी पश्चिम बंगाल और सिक्किम

6. गंगीय पश्चिम बंगाल

7. ओडिशा

8. झारखंड

9. बिहार

10. पूर्वी उत्तर प्रदेश

11. पश्चिम उत्तर प्रदेश

12. उत्तराखंड

13. हरियाणा, चंडीगढ़ और दिल्ली

14. पंजाब

15. हिमाचल प्रदेश

16. जम्मू और कश्मीर और लद्दाख

17. पश्चिम राजस्थान

18. पूर्वी राजस्थान

19. पश्चिम मध्य प्रदेश

20. पूर्वी मध्य प्रदेश

21. गुजरात

22. सौराष्ट्र

23. कोंकण और गोवा

24. मध्य महाराष्ट्र

25. मराठवाड़ा

26. विदर्भ

27. छत्तीसगढ़

28. तटीय आंध्र प्रदेश और यनम

29. तेलंगाना

30. रायलसीमा

31. तमिलनाडु, पुडुचेरी और कराईकल

32. तटीय कर्नाटक

33. आंतरिक उत्तरी कर्नाटक

34. आंतरिक दक्षिणी कर्नाटक

35. केरल और माहे

36. लक्षद्वीप



1. Andaman & Nicobar Islands

2. Arunachal Pradesh

3. Assam & Meghalaya

4. Nagaland, Manipur, Mizoram & Tripura

5. Sub-Himalayan West Bengal & Sikkim

6. Gangetic West Bengal

7. Odisha

8. Jharkhand

9. Bihar

10. East Uttar Pradesh

11. West Uttar Pradesh

12. Uttarakhand

13. Haryana, Chandigarh & Delhi

14. Punjab

15. Himachal Pradesh

16. Jammu & Kashmir and Ladakh

17. West Rajasthan

18. East Rajasthan

19. West Madhya Pradesh

20. East Madhya Pradesh

21. Gujarat

22. Saurashtra

23. Konkan & Goa

24. Madhya Maharashtra

25. Marathwada

26. Vidarbha

27. Chhattisgarh

28. Coastal Andhra Pradesh & Yanam

29. Telangana

30. Rayalaseema

31. Tamilnadu, Puducherry & Karaikal

32. Coastal Karnataka

33. North Interior Karnataka

34. South Interior Karnataka

35. Kerala & Mahe

36. Lakshadweep

SPATIAL DISTRIBUTION (% of Stations reporting)

% Stations	Category	% Stations	Category
76-100	Widespread (WS/Most Places)	26-50	Scattered (SCT/A Few Places)
51-75	Fairly Widespread (FWS/Many Places)	1-25	Isolated (ISOL)



Fog



Heavy Snow



Cold Wave



Heavy Rain



Dust Storm



Cold Day



Very Heavy Rain



Heat Wave



Ground Frost



Extremely Heavy Rain



Warm Night



Thunder & Lightning



Hot Day



Hailstorm



Hot & Humid



Dust Raising Winds



Strong Surface Winds

COLOUR CODED WARNING

No Warning (No Action)

Watch (Be Aware)

Alert (Be Prepared To Take Action)

Warning (Take Action)

Probabilistic Forecast

Terms	Probability of Occurrence (%)
Unlikely	< 25
Likely	25 - 50
Very Likely	50 - 75
Most Likely	> 75

* Red colour warning does not mean "Red Alert", Red colour warning means "Take Action".

Forecast and Warning for any day is valid from 0830 hours IST of day till 0830 hours IST of next day.

For more details, kindly visit <https://mausam.imd.gov.in> or contact: 011-2434-4599

(Service to the Nation since 1875)

DEFINITION/CRITERIA

Rain/ Snow *

Heavy: 64.5 to 115.5 mm/cm *
Very Heavy: 115.6 to 204.4 mm/cm *
Extremely Heavy: > 204.4 mm/cm *

Heat Wave

When maximum temperature of a station reaches $\geq 40^\circ\text{C}$ for plains and $\geq 30^\circ\text{C}$ for hilly regions
(a) Based on Departure from normal

Heat Wave: Maximum Temperature Departure from normal 4.5°C to 6.4°C .

Severe Heat Wave: Maximum Temperature Departure from normal $\geq 6.5^\circ\text{C}$

(b). Based on Actual maximum temperature

Heat Wave: When actual maximum temperature $\geq 45^\circ\text{C}$.

Severe Heat Wave: When actual maximum temperature $\geq 47^\circ\text{C}$.

(c). Criteria for heat wave for coastal stations

When maximum temperature departure is $> 4.5^\circ\text{C}$ from normal. Heat Wave may be described provided maximum temperature $\geq 37^\circ\text{C}$.

Warm Night

When maximum temperature remains 40°C

Warm Night: When minimum temperature departure 4.5°C to 6.4°C .

Severe Warm Night: When minimum temperature departure $> 6.4^\circ\text{C}$.

Cold Wave

When minimum temperature of a station $\leq 10^\circ\text{C}$ for plains and $\leq 0^\circ\text{C}$ for hilly regions.
(a). Based on departure

Cold Wave: Minimum Temperature Departure from normal -4.5°C to -6.4°C .

Severe Cold Wave: Minimum Temperature Departure from normal $\leq -6.5^\circ\text{C}$

(b) Based on actual Minimum Temperature (for Plains only)

Cold Wave: When Minimum Temperature is $\leq 4.0^\circ\text{C}$

Severe Cold Wave: When Minimum Temperature is $\leq 2.0^\circ\text{C}$

(c) For Coastal Stations

When Minimum Temperature departure is $\leq -4.5^\circ\text{C}$ & actual Minimum Temperature is $\leq 15^\circ\text{C}$

Cold Day

When minimum temperature of a station $\leq 10^\circ\text{C}$ for plains and $\leq 0^\circ\text{C}$ for hilly regions
Based on departure

Cold Day: Maximum Temperature Departure from normal -4.5°C to -6.4°C .

Severe Cold Day: Maximum Temperature Departure from normal $\leq -6.5^\circ\text{C}$

Fog

Phenomenon of small droplets suspended in air and the horizontal visibility $< 1\text{km}$

Moderate Fog: When the visibility between 500-200 metres

Dense Fog: when the visibility between 50- 200 metres

Very Dense Fog: when the visibility < 50 metres

Thunderstorm

Sudden electrical discharges manifested by a flash of light (Lightning) and a sharp rumbling sound (thunder)

Dust/Sand Storm

An ensemble of particles of dust or sand energetically lifted to great heights by a strong and turbulent wind.

Frost

Ice deposits on ground

Air temperature $\leq 4^\circ\text{C}$ (over Plains)

Squall

A strong wind that rises suddenly, lasts for atleast 1 minute.

Moderate: Wind speed 52-61 kmph

Severe: Wind speed 62-67 kmph

Very Severe: Wind speed > 67 kmph

Sea State

Effect of various waves in the sea over specific area

Rough to very rough: Wind speed 41-62 kmph (22-33 knots) & Wave height 2.5-6 metre

High to very high: Wind speed 63-117 kmph (34-63 knots) & Wave height 6-14 metre

Phenomenal: Wind speed > 117 kmph (> 63 knots) & Wave height > 14 metre

Cyclone

Cyclonic Storm: Wind speed 62-87 kmph (34-47 knots)

Severe Cyclonic Storm: Wind speed 88-117 kmph (48-63 knots)

Very Severe Cyclonic Storm: Wind speed 118-165 kmph (64 - 89 knots)

Extremely Severe Cyclonic Storm: Wind speed 166-220 kmph (90 -119 knots)

Super Cyclone Storm: Wind speed > 220 kmph (> 119 knots)

* Red colour warning does not mean "Red Alert", Red colour warning means "Take Action".

Forecast and Warning for any day is valid from 0830 hours IST of day till 0830 hours IST of next day.

For more details, kindly visit <https://mausam.imd.gov.in> or contact: 011-2434-4599

(Service to the Nation since 1875)