



Government of India
Ministry of Earth Sciences
India Meteorological Department



Press Release

Date: 25th November, 2025

Time of Issue: 1300 hours IST

Subject: (i) The Well-Marked low-pressure area over Malaysia & adjoining Strait of Malacca intensified into depression over strait of Malacca.

(ii) A Low pressure area over southwest Bay of Bengal and adjoining areas of South Sri Lanka & Equatorial Indian Ocean

(iii) Heavy rainfall likely over Tamil Nadu during 25th-30th; over Kerala & Mahe on 25th & 26th; Coastal Andhra Pradesh & Yanam and Rayalaseema during 29th November to 01st December; Andaman & Nicobar Islands during 25th to 29th November with very heavy rainfall over Tamil Nadu during 28th-30th, Andaman & Nicobar Islands during 26th & 27th, Coastal Andhra Pradesh & Yanam and Rayalaseema on 30th November.

Realised weather during past 24 hours ending at 0830 hours IST of today, the 25th November, 2025:

- ❖ **Heavy to very heavy rainfall (7-20 cm)** at isolated places over Tamil Nadu
- ❖ **Dense fog (visibility 50-199 m):** reported in isolated pockets of Nagaland, Mizoram & Tripura and Odisha.

Weather Systems, Forecast and Warnings (refer to ANNEXURE I & II):

- ❖ Yesterday's well marked low pressure area over Malaysia and adjoining Strait of Malacca moved slightly west-northwestwards, lay over Strait of Malacca at 0530 hours IST of today, intensified into depression and lay over strait of Malacca, at 0830 hours IST of today, 25th November 2025. It is likely to move slowly west-northwestwards and intensify further during next 48 hours.
- ❖ Under the influence of yesterday's upper air cyclonic circulation over Comorin area and neighbourhood, a low-pressure area formed over the Comorin and adjoining areas of southwest Bay of Bengal & Sri Lanka at 0530 hours IST of today, the 25th November, 2025. It lay over southwest Bay of Bengal and adjoining areas of South Sri Lanka & Equatorial Indian Ocean at 0830 hours IST of today, the 25th November, 2025. It is very likely to move north-northwestwards and become well marked low pressure area during next 24 hours and intensify further into a depression during subsequent 24 hours.

Under the influence of these systems, the following weather is likely:

- ❖ **Heavy rainfall** likely over Tamil Nadu during 25th-30th; over Kerala & Mahe on 25th & 26th; Coastal Andhra Pradesh & Yanam and Rayalaseema during 29th November to 01st December; Andaman & Nicobar Islands during 25th to 29th November with **very heavy rainfall over Tamil Nadu during 28th-30th, Andaman & Nicobar Islands during 26th & 27th, Coastal Andhra Pradesh & Yanam and Rayalaseema on 30th November.**
- ❖ **Thunderstorm with lightning** very likely over Tamil Nadu during 25th-29th, Kerala & Mahe during 25th-27th, Lakshadweep on 25th, Coastal Andhra Pradesh & Yanam & Rayalaseema on 28th & 29th November and over Andaman & Nicobar Islands with **gusty wind speeds reaching 30-40 kmph on 29th ; 40-50 kmph on 25th and 50-60 kmph during 26th -28th November.**

Temperature Conditions during past 24 hours till 0830 hours IST of today:

- ❖ **Minimum temperatures** are in the range of **less than 6°C** at many places over Jammu-Kashmir-Ladakh-Gilgit-Baltistan-Muzaffarabad; at few places over Himachal Pradesh; at isolated places over Uttarakhand & Punjab; in the **range of 7-10°C** at many places over Haryana Chandigarh & Delhi, West Uttar Pradesh & north Rajasthan and isolated over East Uttar Pradesh. **The lowest minimum temperature of 6.3°C is reported at Hissar (Haryana) over the plains of India.**

- ❖ **Minimum Temperature were** below normal (-1.6°C to -3.0°C) at many places over Punjab, Haryana; at isolated places over Rajasthan, Uttar Pradesh, Saurashtra & Kutch, Chhattisgarh. **(refer to ANNEXURE IV)**

Forecast of minimum temperatures:

- ❖ No large change in minimum temperature likely over Central India for the next 2 days and gradual fall in minimum temperature likely by 2-3° C thereafter.
- ❖ No significant change in the minimum temperature likely over rest part of the country during next 7 days.

Dense Fog Warnings:

- ❖ **Dense fog conditions** very likely to prevail during night/early morning hours in isolated pockets of Nagaland, Manipur, Mizoram & Tripura on 25th & 26th November and in Odisha on 25th November.

Wind Warning, Sea Condition, Fisherman Warning:

Wind Warning

(a) South Andaman Sea, Strait of Malacca and along & off Nicobar Islands & adjoining Malaysia, western Indonesia & Thailand:

Squally weather with wind speed reaching 40-50 gusting to 60 kmph is very likely to prevail on 25th November. Winds speed would gradually increase becoming squally winds reaching 50-60 gusting to 70 kmph during 26th to 28th November. The winds speed would gradually decrease thereafter.

(b) Adjoining areas of North Andaman Sea

Squally weather with wind speed reaching 35-45 gusting to 55 kmph is very likely to prevail during 25th to 28th November.

(c) Southeast Bay of Bengal:

Squally weather with wind speed reaching 35-45 gusting to 55 kmph is very likely on 25th November. It would gradually increase becoming squally winds speed reaching 45-55 gusting to 65 kmph during 26th to 28th November.

(d) Southwest Bay of Bengal, Gulf of Mannar, Comorin area and along & off Tamil Nadu, Puducherry & Sri Lanka coasts

Squally weather with wind speed reaching 35-45 kmph gusting to 55 kmph likely to prevail during 25th to 26th November. It is very likely to increase becoming squally winds speed reaching 45-55 kmph gusting to 55 kmph from 27th morning and 55-65 gusting to 75 kmph during 28th to 30th November.

(e) Adjoining areas of Southeast Arabian Sea, Lakshadweep, Maldives and along & off Kerala coast:

Squally weather with wind speed reaching 35-45 kmph gusting to 55 kmph likely to prevail during 25th to 27th November.

(f) Westcentral Bay of Bengal and along & off Andhra Pradesh coast:

Squally weather with wind speed reaching 35-45 kmph gusting to 55 kmph likely to commence from 27th November. It is very likely to increase thereafter, becoming squally winds speed reaching 40-50 kmph gusting to 60 kmph during 28th – 30th November.

Sea Condition:

(a) South Andaman Sea, Strait of Malacca and along & off Nicobar Islands & adjoining Malaysia, western Indonesia & Thailand:

Rough to very rough sea conditions are very likely during 25th to 27th November. Sea condition would gradually improve thereafter.

(b) Adjoining areas of North Andaman Sea

Moderate to rough sea conditions are very likely during 25th to 28th November.

(c) Southeast Bay of Bengal:

Moderate to rough sea conditions are very likely on 25th November, becoming rough to very rough during 26th to 28th November.

(d) Southwest Bay of Bengal, Gulf of Mannar, Comorin area and along & off Tamil Nadu, Puducherry & Sri Lanka coasts

Moderate to rough sea conditions are very likely on 25th and 26th November, becoming rough to very rough from 27th to 30th November.

(e) Adjoining areas of Southeast Arabian Sea, Lakshadweep, Maldives and along & off Kerala coast:

Moderate to rough sea conditions are very likely during 25th to 27th November.

(f) Westcentral Bay of Bengal and along & off Andhra Pradesh coast:

Moderate to rough sea conditions are very likely from 27th November, becoming rough to very rough during 28th to 30th November.

Fishermen Warning:

Fishermen are advised not to venture into

(a) South Andaman Sea, Strait of Malacca and along & off Nicobar Islands & adjoining Malaysia, western Indonesia & Thailand till 28th November.

(b) Southeast Bay of Bengal during 25th to 28th November.

(c) Southwest Bay of Bengal, Gulf of Mannar, Comorin area and along & off Tamil Nadu, Puducherry & Sri Lanka coasts till 30th November

(d) Adjoining areas of westcentral Bay of Bengal and along & off Andhra Pradesh coast from 27th to 30th November

(e) Adjoining areas of Southeast Arabian Sea, Lakshadweep, Maldives and along & off Kerala coast during 25th to 27th November.

- ❖ Those out at sea should avoid South Andaman Sea, Strait of Malacca and along & off Nicobar Islands & adjoining Malaysia, western Indonesia & Thailand till 28th, Southeast Bay of Bengal during 26th to 28th, southwest Bay of Bengal till 30th and westcentral Bay of Bengal during 27th to 30th November.
- ❖ The fishermen along & off South Andhra Pradesh coast should return to coast before 27th November.

ii) Weather conditions and forecast over Delhi/NCR during 25th-28th November, 2025 (ANNEXURE III)

For more details, kindly refer National Weather Bulletin:

https://mausam.imd.gov.in/responsive/all_india_forecast_bulletin.php

For District wise warnings refer: <https://mausam.imd.gov.in/responsive/districtWiseWarningGIS.php>

For Fishermen warning refer <https://rsmcnewdelhi.imd.gov.in/fishermen-warning.php>

Significant rainfall recorded (in cm) (from 0830 hours IST of yesterday to 0830 hours IST of today):

Tamil Nadu, Puducherry & Karaikal: Oothu (dist Tirunelveli) 17; Nalumukku (dist Tirunelveli) 16; Kakkachi (dist Tirunelveli) 14; Manjolai (dist Tirunelveli) 13; Kothavacherry (dist Cuddalore) 8; Mannargudi (dist Tiruvarur), Needamangalam (dist Tiruvarur), Tiruvarur (dist Tiruvarur), Bhuvanagiri (dist Cuddalore), Mimisal (dist Pudukkottai) 6 Each; Chinnakalar (dist Coimbatore), Parangipettai (dist Cuddalore), Sethiathope (dist Cuddalore), Pappireddipatti (dist Dharmapuri), Thammampatty (dist Salem), Nannilam (dist Tiruvarur), Kayalpattinam (dist Toothukudi), Annamalai Nagar (dist Cuddalore), Lalpet (dist Cuddalore) 4 Each;

Lakshadweep: Minicoy (dist Lakshadweep) 6.

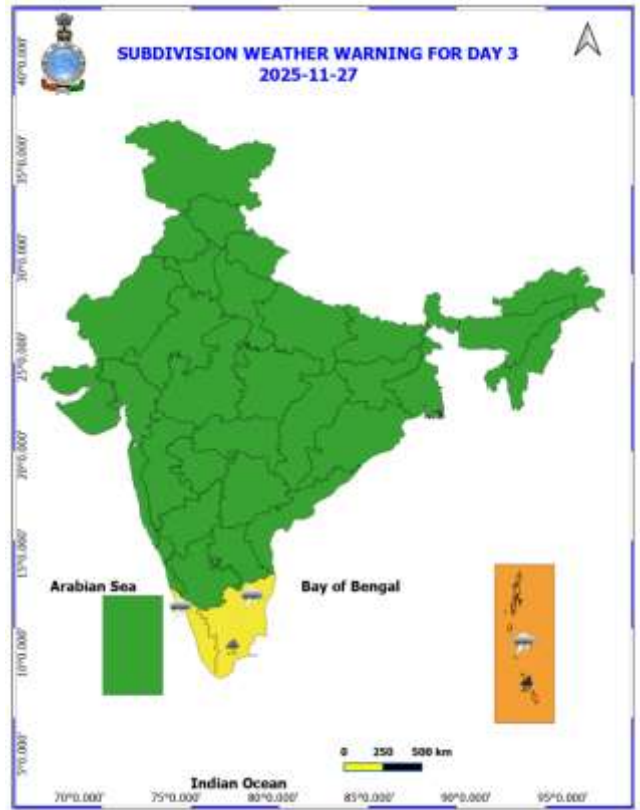
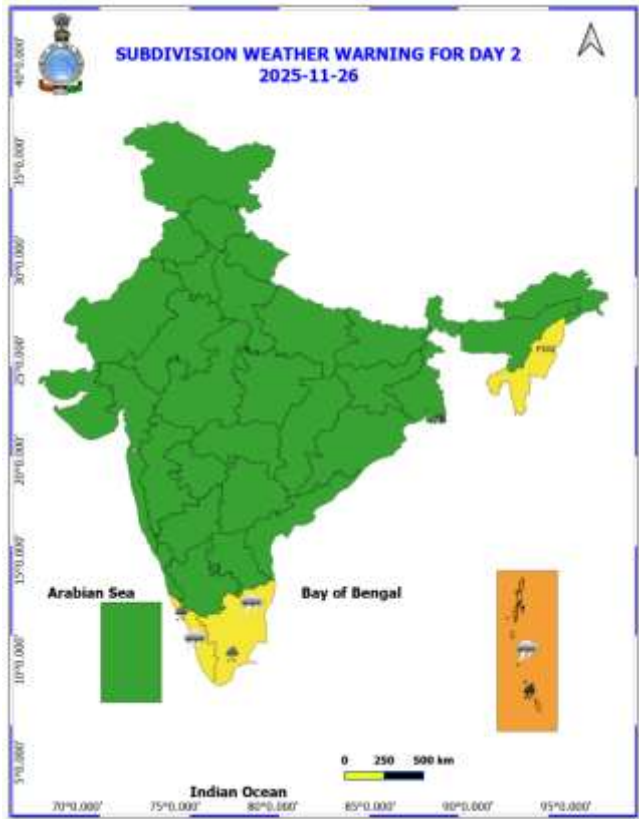
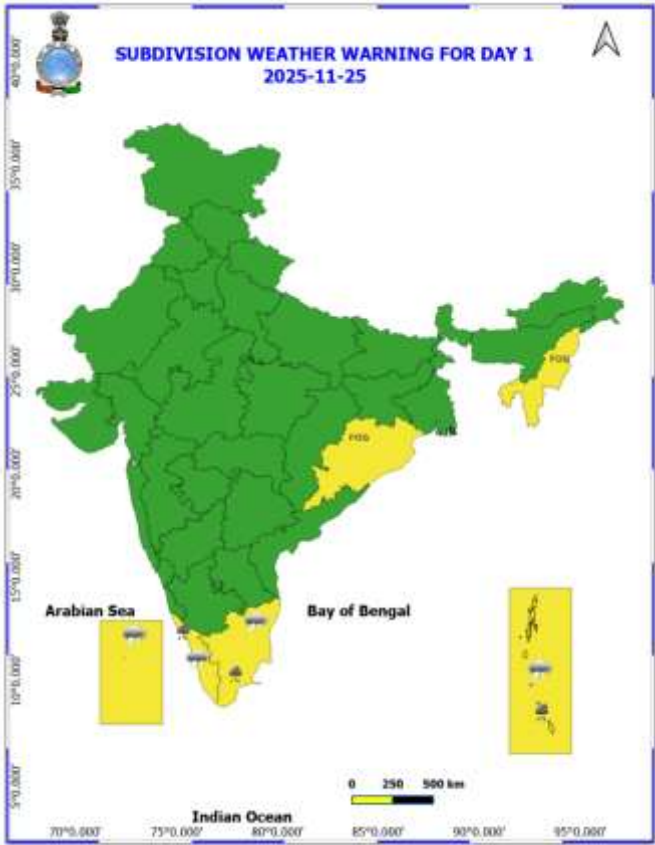
Visibility reported (≤ 200 m) (in meter):

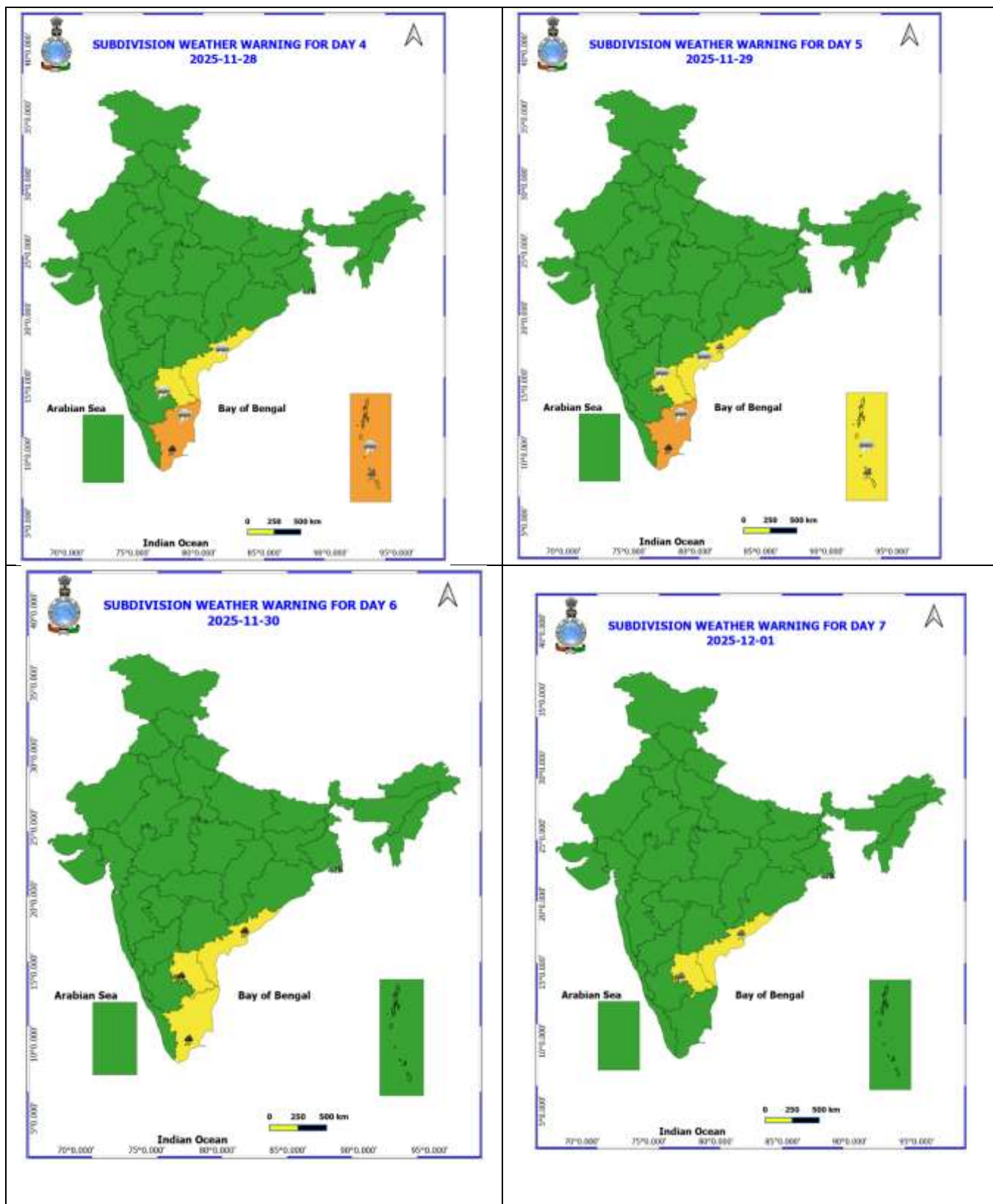
- ❖ **East Madhya Pradesh:** Rewa-800m
- ❖ **Odisha:** Rourkela-40 m
- ❖ **Himachal Pradesh:** Bilaspur-100m
- ❖ **Nagaland, Mizoram & Tripura:** Agartala-50 m, Lengpui-100 m, Dimapur-100 m

ANNEXURE I

Table-1								
7 Days Rainfall Forecast								
S.No.	Subdivision	25- Nov	26- Nov	27- Nov	28- Nov	29- Nov	30- Nov	1- Dec
		Day 1	Day 2	Day 3	Day 4	Day 5	Day 6	Day 7
1	ANDAMAN & NICOBAR ISLANDS	FWS	FWS	FWS	FWS	FWS	SCT	SCT
2	ARUNACHAL PRADESH	ISOL	DRY	DRY	DRY	DRY	DRY	DRY
3	ASSAM & MEHGHALAYA	DRY	DRY	DRY	DRY	DRY	DRY	DRY
4	NAGALAND, MANIPUR, MIZORAM AND TRIPURA	DRY	DRY	DRY	DRY	DRY	DRY	DRY
5	SUB HIMALAYAN WEST BENGAL & SIKKIM	DRY	DRY	DRY	DRY	DRY	DRY	DRY
6	GANGETIC WEST BENGAL	DRY	DRY	DRY	DRY	DRY	DRY	DRY
7	ODISHA	DRY	DRY	DRY	DRY	DRY	DRY	DRY
8	JHARKHAND	DRY	DRY	DRY	DRY	DRY	DRY	DRY
9	BIHAR	DRY	DRY	DRY	DRY	DRY	DRY	DRY
10	EAST UTTAR PRADESH	DRY	DRY	DRY	DRY	DRY	DRY	DRY
11	WEST UTTAR PRADESH	DRY	DRY	DRY	DRY	DRY	DRY	DRY
12	UTTARAKHAND	DRY	DRY	DRY	DRY	DRY	DRY	DRY
13	HARYANA, CHANDIGARH & DELHI	DRY	DRY	DRY	DRY	DRY	DRY	DRY
14	PUNJAB	DRY	DRY	DRY	DRY	DRY	DRY	DRY
15	HIMACHAL PRADESH	DRY	DRY	DRY	DRY	DRY	DRY	DRY
16	JAMMU AND KASHMIR AND LADAKH	DRY	DRY	DRY	DRY	DRY	DRY	DRY
17	WEST RAJASTHAN	DRY	DRY	DRY	DRY	DRY	DRY	DRY
18	EAST RAJASTHAN	DRY	DRY	DRY	DRY	DRY	DRY	DRY
19	WEST MADHYA PRADESH	DRY	DRY	DRY	DRY	DRY	DRY	DRY
20	EAST MADHYA PRADESH	DRY	DRY	DRY	DRY	DRY	DRY	DRY
21	GUJRAT REGION	DRY	DRY	DRY	DRY	DRY	DRY	DRY
22	SAURASHTRA & KUTCH	DRY	DRY	DRY	DRY	DRY	DRY	DRY
23	KONKAN & GOA	DRY	DRY	DRY	DRY	DRY	DRY	DRY
24	MADHYA MAHARASHTRA	DRY	DRY	DRY	DRY	DRY	DRY	DRY
25	MARATHWADA	DRY	DRY	DRY	DRY	DRY	DRY	DRY
26	VIDARBHA	DRY	DRY	DRY	DRY	DRY	DRY	DRY
27	CHHATTISGARH	DRY	DRY	DRY	DRY	DRY	DRY	DRY
28	COASTAL ANDHRA PRADESH	ISOL	ISOL	ISOL	SCT	FWS	ISOL	ISOL
29	TELANGANA	DRY	DRY	DRY	DRY	DRY	DRY	DRY
30	RAYALASEEMA	ISOL	ISOL	ISOL	SCT	FWS	ISOL	ISOL
31	TAMILNADU & PUDUCHERRY	ISOL	ISOL	ISOL	SCT	FWS	ISOL	ISOL
32	COSTAL KARNATAKA	DRY	DRY	DRY	DRY	DRY	DRY	DRY
33	NORTH INTERIOR KARNATAKA	DRY	DRY	DRY	DRY	DRY	DRY	DRY
34	SOUTH INTERIOR KARNATAKA	DRY	DRY	DRY	DRY	DRY	DRY	DRY
35	KERALA AND MAHE	SCT	SCT	SCT	SCT	SCT	SCT	SCT
36	LAKSHADWEEP	FWS	SCT	SCT	SCT	SCT	SCT	SCT

- As the lead period increases forecast accuracy decrease.





- Action may be taken based on ORANGE AND REDCOLOUR warnings.
- Vulnerable regions likely urban and hilly areas action may be initiated for heavy rainfall warning.
- As the lead period increases forecast accuracy decreases.

Detailed districtwise MultiHazard weather warning for next five days available at
<https://mausam.imd.gov.in/responsive/districtWiseWarningGIS.php>

Weather forecast over Delhi/NCR during 25th to 28th November 2025**Past Weather:**

There has been a slight fall in minimum temperature by 01°C and no large change in maximum temperatures during the past 24 hours over Delhi. The maximum and minimum temperatures over Delhi were around 25 to 27 °C and 09 to 11°C, respectively. The minimum temperatures are appreciably below normal (-3.1 to 5.0°C) at isolated places and below normal (-1.6 to -3.0 °C) at a few places and normal (-1.5 to 1.5°C) in the remaining parts of Delhi. The maximum temperatures were below normal (-1.6 to -3.0 °C) at isolated places and normal (-1.5 to 1.5°C) at many places over Delhi. Smoke was reported at Safdarjung Airport. Safdarjung airport recorded the lowest visibility of 900m from 0730 Hrs IST to 0800 Hrs IST on 25.11.2025, which thereafter improved, becoming 1000m at 0800 Hrs IST. Mainly clear sky conditions with predominant surface wind from the west-southwesterly direction with a wind speed up to 09 kmph prevailed during the past 24 hours. Mainly clear sky conditions with calm wind in early morning hours, gradually increasing up to 15 kmph from the west-southwest direction prevailed over the region in the forenoon today.

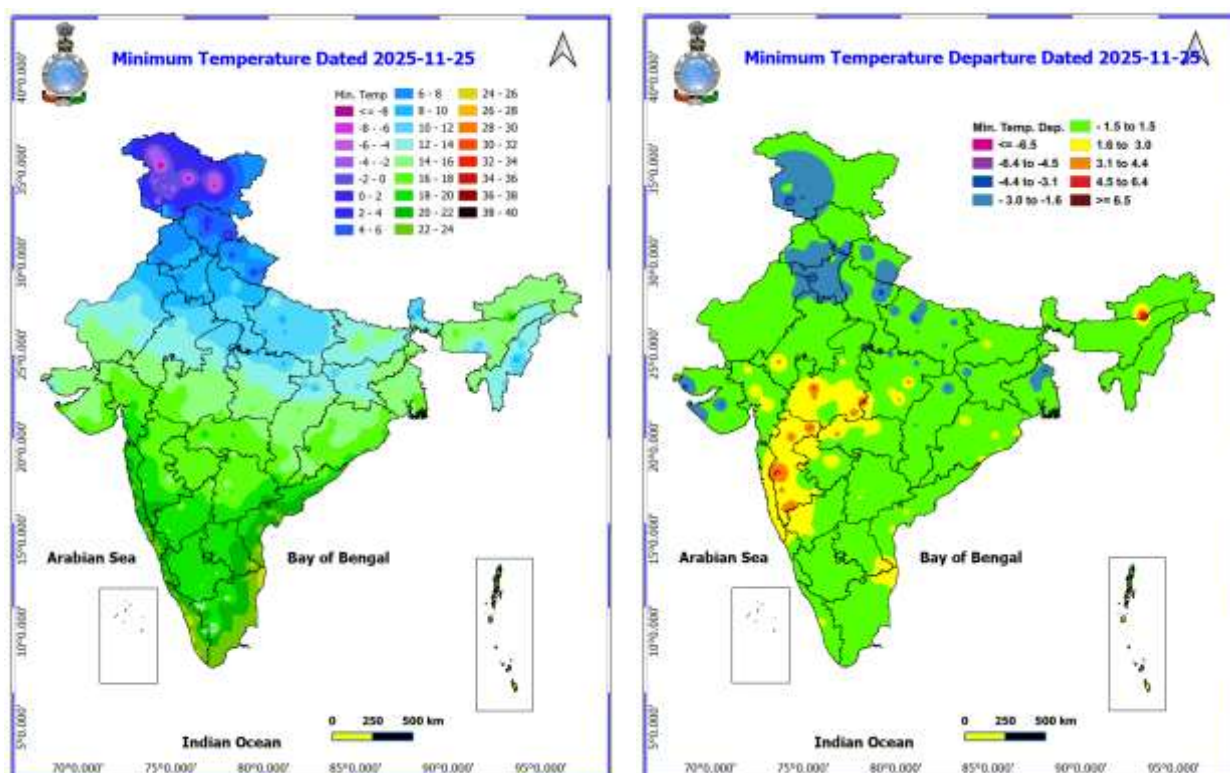
Weather Forecast:

25.11.2025: Mainly clear sky. Mist/Haze during the night. The maximum temperatures are likely to be in the range of 23 to 25°C. The maximum temperatures will be below normal (-1.7 to -3.7 °C) over Delhi. The predominant surface wind is likely to be from the northwest direction with wind speeds up to 15 kmph during the afternoon hours. The wind speed will decrease, becoming less than 10 kmph from the northwest direction during the evening and night.

26.11.2025: Mainly clear sky. Shallow fog at most places and moderate fog at isolated places during morning hours. The maximum and minimum temperatures over Delhi are likely to be in the range of 23 to 25°C and 08 to 10°C respectively. The minimum temperatures will be below normal (-1.3 to -3.3°C) and maximum temperatures will be below normal (-1.7 to -3.7°C) over Delhi. The predominant surface wind is likely to be from the west direction with wind speeds up to 05 kmph during morning hours. The wind speed will remain the same up to 15 kmph from the north direction in the afternoon. The wind speed will decrease, becoming less than 05 kmph from the north direction during the evening and night.

27.11.2025: Mainly clear sky. Shallow fog at most places and moderate fog at isolated places during morning hours. The maximum and minimum temperatures over Delhi are likely to be in the range of 23 to 25°C and 08 to 10°C respectively. The minimum temperatures will be below normal (-0.3 to -2.3°C) and maximum temperatures will be below normal (-1 to -3°C) over Delhi. The predominant surface wind is likely to be from the west direction with calm wind during the morning hours. The wind speed will increase, becoming less than 10 kmph from the north direction in the afternoon. The wind speed will decrease, becoming less than 10 kmph from the north direction during the evening and night.

28.11.2025: Mainly clear sky. Shallow fog at most places and moderate fog at isolated places during morning hours. The maximum and minimum temperatures over Delhi are likely to be in the range of 23 °C to 25°C and 9 °C to 11°C, respectively. The minimum temperatures will be near normal, and the maximum temperature will be below normal (-1.0 to -3.0 °C) over Delhi. The predominant surface wind is likely to be from the west direction with wind speeds up to 10 kmph during morning hours. The wind speed will increase up to 15 kmph from the northwest direction in the afternoon. The predominant surface wind is likely to be from the northwest direction with wind speeds up to 10 kmph during the evening and night.



Impact & Action Suggested due to

- ❖ Isolated **very heavy rainfall over** Tamil Nadu during 28th-30th, Andaman & Nicobar Islands during 26th & 27th, Coastal Andhra Pradesh & Yanam and Rayalaseema on 30th November.

Impact Expected

- Localized Flooding of roads, water logging in low lying areas and closure of underpasses mainly in urban areas of the above region.
- Occasional reduction in visibility due to heavy rainfall.
- Disruption of traffic in major cities due to water logging in roads leading to increased travel time.
- Minor damage to kutcha roads.
- Possibilities of damage to vulnerable structure.
- Localized Landslides/Mudslides/landslips/mudslips/landsinks/mudsinks.
- Damage to horticulture and standing crops in some areas due to inundation.
- It may lead to riverine flooding in some river catchments (for riverine flooding please visit Web page of CWC)

Action Suggested

- Check for traffic congestion on your route before leaving for your destination.
- Follow any traffic advisories that are issued in this regard.
- Avoid going to areas that face the water logging problems often.
- Avoid staying in vulnerable structure.

Agromet advisories for likely impact of Heavy Rainfall

Agromet advisories for likely impact of Heavy / Heavy to Very Heavy Rainfall

- In **Tamil Nadu**, drain out excess rain water from fields of rice, groundnut, sugarcane, cotton, black gram, maize and vegetables and plantations of coconut, banana, arecanut, mango, rubber, cinnamon and black pepper. Strengthen irrigation channels and field bunds in rice to avoid crop lodging. Provide support to banana plants with wooden poles to prevent them from falling.
- In **Kerala**, ensure adequate drainage facilities in fields of rice, vegetables and plantations of banana, coconut, cardamom and black pepper. Carry out propping in banana to prevent their falling due to heavy rainfall. Undertake staking for vegetables grown in pandals.
- In **Andaman and Nicobar Islands**, store the harvested produce of rice in well-covered elevated places to prevent moisture damage. Avoid early sowing of pulses and lentil during heavy rainfall. Provide mechanical support to banana and papaya plants at fruiting stage. Drain out excess water from vegetable nurseries and protect young seedlings using temporary rain shelters or plastic covers.

Livestock / Fishery

- Keep the animals inside the shed during heavy rainfall and provide them balanced feed.
- Store feed and fodder in a safe place to prevent spoilage.
- Construct an outlet with proper netting around the ponds to drain out excess water, thereby preventing fish from escaping in case of overflow.

Agromet advisories for likely impact of Thunderstorm / Gusty Winds

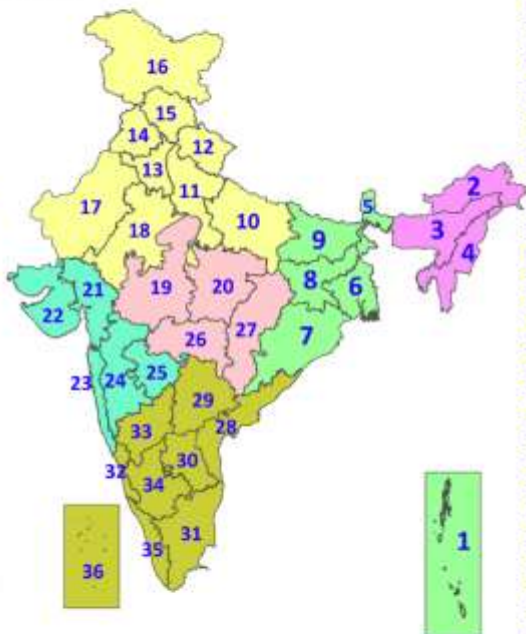
- Provide mechanical support to horticultural crops and staking or support to vegetables and young fruit plants / fruit-bearing plants to avoid lodging due to strong winds.

Legends & abbreviations:

- ❖ **Heavy Rain:** 64.5-115.5mm; **Very Heavy Rain:** 115.6-204.4mm; **Extremely Heavy Rain:** >204.4mm.
- ❖ **Obsy:** Observatory; **Automatic Weather Station;** **ARG:** Automatic Rain Gauge; **dist:** District; **NH:** National Highway; **KVK:** Krishi Vigyan Kendra; **DVC:** Damodar Valley Corporation; **PTO:** Part Time Office, **Aero:** Aerodrome, **IAF:** Indian Air Force.
- ❖ **Region wise classification of meteorological Sub-Divisions:**
 - **Northwest India:** Western Himalayan Region (Jammu-Kashmir-Ladakh-Gilgit-Baltistan-Muzaffarabad, Himachal Pradesh and Uttarakhand); Punjab, Haryana-Chandigarh-Delhi; West Uttar Pradesh, East Uttar Pradesh, West Rajasthan and East Rajasthan.
 - **Central India:** West Madhya Pradesh, East Madhya Pradesh, Vidarbha and Chhattisgarh.
 - **East India:** Bihar, Jharkhand, Sub-Himalayan West Bengal & Sikkim; Gangetic West Bengal, Odisha and Andaman & Nicobar Islands.
 - **Northeast India:** Arunachal Pradesh, Assam & Meghalaya and Nagaland, Manipur, Mizoram & Tripura.
 - **West India:** Gujarat Region, Saurashtra & Kutch, Konkan & Goa, Madhya Maharashtra and Marathawada.
 - **South India:** Coastal Andhra Pradesh & Yanam, Telangana, Rayalaseema, Coastal Karnataka, North Interior Karnataka, South Interior Karnataka, Kerala & Mahe, Tamil Nadu, Puducherry & Karaikal and Lakshadweep.

LEGENDS

1. अंडमान और निकोबार द्वीपसमूह
2. अरुणाचल प्रदेश
3. असम और मेघालय
4. नागालैंड, मणिपुर, मिजोरम और त्रिपुरा
5. उप-हिमालयी पश्चिम बंगाल और सिक्किम
6. गंगीय पश्चिम बंगाल
7. ओडिशा
8. झारखंड
9. बिहार
10. पूर्वी उत्तर प्रदेश
11. पश्चिम उत्तर प्रदेश
12. उत्तराखंड
13. हरियाणा, चंडीगढ़ और दिल्ली
14. पंजाब
15. हिमाचल प्रदेश
16. जम्मू और कश्मीर और लद्दाख
17. पश्चिम राजस्थान
18. पूर्वी राजस्थान
19. पश्चिम मध्य प्रदेश
20. पूर्वी मध्य प्रदेश
21. गुजरात
22. सौराष्ट्र
23. कोंकण और गोवा
24. मध्य महाराष्ट्र
25. मराठवाड़ा
26. विदर्भ
27. छत्तीसगढ़
28. तटीय आंध्र प्रदेश और यनम
29. तेलंगाना
30. रायलसीमा
31. तमिलनाडु, पुडुचेरी और कराईकल
32. तटीय कर्नाटक
33. आंतरिक उत्तरी कर्नाटक
34. आंतरिक दक्षिणी कर्नाटक
35. केरल और माहे
36. लक्षद्वीप



1. Andaman & Nicobar Islands
2. Arunachal Pradesh
3. Assam & Meghalaya
4. Nagaland, Manipur, Mizoram & Tripura
5. Sub-Himalayan West Bengal & Sikkim
6. Gangetic West Bengal
7. Odisha
8. Jharkhand
9. Bihar
10. East Uttar Pradesh
11. West Uttar Pradesh
12. Uttarakhand
13. Haryana, Chandigarh & Delhi
14. Punjab
15. Himachal Pradesh
16. Jammu & Kashmir and Ladakh
17. West Rajasthan
18. East Rajasthan
19. West Madhya Pradesh
20. East Madhya Pradesh
21. Gujarat
22. Saurashtra
23. Konkan & Goa
24. Madhya Maharashtra
25. Marathwada
26. Vidarbha
27. Chhattisgarh
28. Coastal Andhra Pradesh & Yanam
29. Telangana
30. Rayalaseema
31. Tamilnadu, Puducherry & Karaikal
32. Coastal Karnataka
33. North Interior Karnataka
34. South Interior Karnataka
35. Kerala & Mahe
36. Lakshadweep

SPATIAL DISTRIBUTION (% of Stations reporting)

% Stations	Category	% Stations	Category
76-100	Widespread (WS/Most Places)	26-50	Scattered (SCT/A Few Places)
51-75	Fairly Widespread (FWS/Many Places)	1-25	Isolated (ISOL)

- | | | |
|----------------------|----------------------|--------------|
| Fog | Heavy Snow | Cold Wave |
| Heavy Rain | Dust Storm | Cold Day |
| Very Heavy Rain | Heat Wave | Ground Frost |
| Extremely Heavy Rain | Warm Night | |
| Thunder & Lightning | Hot Day | |
| Hailstorm | Hot & Humid | |
| Dust Raising Winds | Strong Surface Winds | |

COLOUR CODED WARNING

No Warning (No Action)
Watch (Be Aware)
Alert (Be Prepared To Take Action)
Warning (Take Action)

Probabilistic Forecast

Terms	Probability of Occurrence (%)
Unlikely	< 25
Likely	25 - 50
Very Likely	50 - 75
Most Likely	> 75

* Red colour warning does not mean "Red Alert", Red colour warning means "Take Action".

Forecast and Warning for any day is valid from 0830 hours IST of day till 0830 hours IST of next day.
For more details, kindly visit <https://mausam.imd.gov.in> or contact: 011-2434-4599

(Service to the Nation since 1875)

DEFINITION/CRITERIA

Rain/ Snow *

Heavy: 64.5 to 115.5 mm/cm *
Very Heavy: 115.6 to 204.4 mm/cm *
Extremely Heavy: > 204.4 mm/cm *

Heat Wave

When maximum temperature of a station reaches $\geq 40^{\circ}\text{C}$ for plains and $\geq 30^{\circ}\text{C}$ for hilly regions
(a) Based on Departure from normal

Heat Wave: Maximum Temperature Departure from normal 4.5°C to 6.4°C .

Severe Heat Wave: Maximum Temperature Departure from normal $\geq 6.5^{\circ}\text{C}$

(b). Based on Actual maximum temperature

Heat Wave: When actual maximum temperature $\geq 45^{\circ}\text{C}$.

Severe Heat Wave: When actual maximum temperature $\geq 47^{\circ}\text{C}$.

(c). Criteria for heat wave for coastal stations

When maximum temperature departure is $> 4.5^{\circ}\text{C}$ from normal. Heat Wave may be described provided maximum temperature $\geq 37^{\circ}\text{C}$.

Warm Night

When maximum temperature remains 40°C

Warm Night: When minimum temperature departure 4.5°C to 6.4°C .

Severe Warm Night: When minimum temperature departure $> 6.4^{\circ}\text{C}$.

Cold Wave

When minimum temperature of a station $\leq 10^{\circ}\text{C}$ for plains and $\leq 0^{\circ}\text{C}$ for hilly regions.

(a). Based on departure

Cold Wave: Minimum Temperature Departure from normal -4.5°C to -6.4°C .

Severe Cold Wave: Minimum Temperature Departure from normal $\leq -6.5^{\circ}\text{C}$

(b) Based on actual Minimum Temperature (for Plains only)

Cold Wave: When Minimum Temperature is $\leq 4.0^{\circ}\text{C}$

Severe Cold Wave: When Minimum Temperature is $\leq 2.0^{\circ}\text{C}$

(c) For Coastal Stations

When Minimum Temperature departure is $\leq -4.5^{\circ}\text{C}$ & actual Minimum Temperature is $\leq 15^{\circ}\text{C}$

Cold Day

When minimum temperature of a station $\leq 10^{\circ}\text{C}$ for plains and $\leq 0^{\circ}\text{C}$ for hilly regions

Based on departure

Cold Day: Maximum Temperature Departure from normal -4.5°C to -6.4°C .

Severe Cold Day: Maximum Temperature Departure from normal $\leq -6.5^{\circ}\text{C}$

Fog

Phenomenon of small droplets suspended in air and the horizontal visibility $< 1\text{km}$

Moderate Fog: When the visibility between 500-200 metres

Dense Fog: when the visibility between 50- 200 metres

Very Dense Fog: when the visibility < 50 metres

Thunderstorm

Sudden electrical discharges manifested by a flash of light (Lightning) and a sharp rumbling sound (thunder)

Dust/Sand Storm

An ensemble of particles of dust or sand energetically lifted to great heights by a strong and turbulent wind.

Frost

Ice deposits on ground

Air temperature $\leq 4^{\circ}\text{C}$ (over Plains)

Squall

A strong wind that rises suddenly, lasts for atleast 1 minute.

Moderate: Wind speed 52-61 kmph

Severe: Wind speed 62-67 kmph

Very Severe: Wind speed > 67 kmph

Sea State

Effect of various waves in the sea over specific area

Rough to very rough: Wind speed 41-62 kmph (22-33 knots) & Wave height 2.5-6 metre

High to very high: Wind speed 63-117 kmph (34-63 knots) & Wave height 6-14 metre

Phenomenal: Wind speed > 117 kmph (> 63 knots) & Wave height > 14 metre

Cyclone

Cyclonic Storm: Wind speed 62-87 kmph (34-47 knots)

Severe Cyclonic Storm: Wind speed 88-117 kmph (48-63 knots)

Very Severe Cyclonic Storm: Wind speed 118-165 kmph (64 - 89 knots)

Extremely Severe Cyclonic Storm: Wind speed 166-220 kmph (90 -119 knots)

Super Cyclone Storm: Wind speed > 220 kmph (> 119 knots)

* Red colour warning does not mean "Red Alert", Red colour warning means "Take Action".

Forecast and Warning for any day is valid from 0830 hours IST of day till 0830 hours IST of next day.

For more details, kindly visit <https://mausam.imd.gov.in> or contact: 011-2434-4599

(Service to the Nation since 1875)