



**Government of India  
Ministry of Earth Sciences  
India Meteorological Department**



**Press Release**

**Date: 30<sup>th</sup> November, 2025**

**Time of Issue: 1305 hours IST**

**Subject: The Cyclonic Storm Ditwah over southwest Bay of Bengal and adjoining north Tamil Nadu-Puducherry likely to cause isolated extremely heavy rainfall over Tamil Nadu, Coastal Andhra Pradesh on 30<sup>th</sup> November and heavy to very heavy rainfall at isolated places likely over Tamil Nadu, Coastal Andhra Pradesh & Yanam, Rayalaseema, Telangana on 30<sup>th</sup> November & 01<sup>st</sup> December.**

**Realised weather during past 24 hours ending at 0830 hours IST of today, the 30<sup>th</sup> November, 2025:**

- ❖ **Heavy to very heavy rainfall** at some places with **isolated extremely heavy rainfall** over Tamil Nadu.
- ❖ **Dense fog (visibility 50-199 m):** reported in isolated pockets of Himachal Pradesh, Odisha, Manipur.
- ❖ **Severe Cold wave conditions** at isolated places over Punjab and **Cold wave conditions** at isolated places over West Madhya Pradesh.
- ❖ The **maximum sustained wind (MSW)** speed of 70-80 kmph gusting to 90 kmph prevailed over coastal Tamil Nadu – Puducherry on 29<sup>th</sup> November. The recorded highest MSW kmph: Shivaganga: 76 kmph (2230 hrs IST, 29<sup>th</sup> Nov.), Nathan ISRO: 68 kmph (1300 hrs IST, 29<sup>th</sup> Nov.), Nagapattinam: 67 kmph (1430 hrs IST, 29<sup>th</sup> Nov.) and Karaikal: 60 kmph (1600 hrs IST, 29<sup>th</sup> Nov.)
- ❖ **Storm surge of height 0.5 m – 1.0 m above astronomical tide inundated low lying areas of coastal Tamil Nadu – Puducherry on 29<sup>th</sup> November. Significant wave height of 1.8 m was observed near Pamban bridge**

**Weather Systems, Forecast and Warnings (refer to ANNEXURE I & II):**

- ❖ Yesterday's **Cyclonic Storm Ditwah** [Pronunciation: Ditwah] laid centered over southwest Bay of Bengal and adjoining north Sri Lanka moved nearly northwards and laid over southwest Bay of Bengal and adjoining north Tamil Nadu-Puducherry coasts at 0530 hrs IST of today, the 30<sup>th</sup> November 2025. It continues to move nearly northward maintaining its intensity with the speed of 12 kmph during past 6 hours and lay centered at 0830 hrs IST of today, the 30<sup>th</sup> November 2025 over the same region, near latitude 11.4°N and longitude 80.6°E, , about 100 km east-southeast of Cuddalore (India), 100 km east-northeast of Karaikal (India), 110 km southeast of Puducherry (India), 140 km northeast of Vedaranniyam (India) and 180 km south-southeast of Chennai (India). The minimum distance of the centre of the cyclone from north Tamil Nadu-Puducherry coasts is about 70km. It is very likely to move nearly northwards parallel to North Tamil Nadu-Puducherry coasts during next 24 hours. While moving northwards the cyclonic storm will be centered over southwest Bay of Bengal within a minimum distance of 60 km and 30 km from the Tamil Nadu-Puducherry coastline by afternoon and evening of today, the 30<sup>th</sup> November respectively.
- ❖ **The Western disturbance as an upper air cyclonic circulation** over North Haryana & neighbourhood in lower tropospheric levels.
- ❖ The **Western Disturbance** as a trough in middle tropospheric level with its axis in middle tropospheric level runs roughly along Long. 61°E to the north of Lat. 20°N.

**Under the influence of these systems, the following weather is likely:**

- ❖ **Under the influence of The Cyclonic Storm Ditwah over southwest Bay of Bengal and adjoining north Tamil Nadu-Puducherry, heavy rainfall likely** over Tamil Nadu, Coastal Andhra Pradesh & Yanam, Rayalaseema, Telangana on 30<sup>th</sup> November & 01<sup>st</sup> December, Kerala & Mahe on 30<sup>th</sup> November **with isolated extremely heavy falls** over north coastal Tamil Nadu & Puducherry, and southern districts of Coastal Andhra Pradesh on 30<sup>th</sup> November and **isolated very heavy rainfall** likely over Rayalaseema on 30<sup>th</sup> November.

- ❖ Scattered to fairly widespread rainfall accompanied with **thunderstorm, lightning & gusty winds (70-80 kmph)** very likely over north Tamil Nadu; with **thunderstorm, lightning & gusty winds (60-70 kmph)** over south Tamil Nadu and with **thunderstorm, lightning & gusty winds (55-65 kmph)** over south Coastal Andhra Pradesh on 30<sup>th</sup> November.
- ❖ Isolated to scattered rainfall accompanied with **thunderstorm, lightning likely** over Tamil Nadu, Coastal Andhra Pradesh & Yanam, Rayalaseema during 01<sup>st</sup>-04<sup>th</sup> December and over Kerala & Mahe during 02<sup>nd</sup> - 04<sup>th</sup> December.

#### Temperature Conditions during past 24 hours till 0830 hours IST of today:

- ❖ **Minimum temperatures** are in the range of **less than 6°C** at many places over Jammu-Kashmir-Ladakh-Gilgit-Baltistan-Muzaffarabad and Himachal Pradesh; at isolated places over Punjab; in the **range of 6-10°C** at many places over Uttarakhand, Haryana Chandigarh & Delhi and West Uttar Pradesh; and at isolated places over north Rajasthan and West Madhya Pradesh. **The lowest minimum temperature of 2.0 °C is reported at Faridkot (Punjab) over the plains of India.**
- ❖ **Minimum Temperature were** below normal (-1.6°C to -3.0°C) at many places over Jammu-Kashmir-Ladakh-Gilgit-Baltistan-Muzaffarabad, Maharashtra, North Interior Karnataka; at a few places over central Madhya Pradesh; at isolated places over Punjab, Haryana, Uttar Pradesh, Telangana, North Chhattisgarh, south Tamil Nadu, Kerala. **(refer to ANNEXURE IV)**

#### Forecast of minimum temperatures:

- ❖ No large change in minimum temperature for next 48 hours over Northwest and East India and thereafter fall in minimum temperature likely by 2-3 °C in next 3 days.
- ❖ Rise in minimum temperature by 2-3°C likely over Central India for the next 2 days and thereafter no large change.
- ❖ No large change in minimum temperature for next 48 hours over Northeast India and thereafter fall in minimum temperature likely by 3-4 °C in next 3 days.
- ❖ Fall in minimum temperature by 2-3°C likely over Gujarat State for the next 4 days and thereafter no large change.
- ❖ Fall in minimum temperature by 2-3°C likely over northern parts of Maharashtra for the next 2 days and thereafter no large change.

#### Dense Fog & Cold wave warning Warnings:

- ❖ **Dense fog conditions** very likely to prevail during early morning hours in isolated pockets of Manipur, Odisha on 01<sup>st</sup> December, over Himachal Pradesh during 01<sup>st</sup>-03<sup>rd</sup> December.
- ❖ **Cold wave conditions** very likely to prevail in isolated pockets of Madhya Maharashtra, Punjab during 01<sup>st</sup>-03<sup>rd</sup>, Marathwada on 02<sup>nd</sup> & 03<sup>rd</sup>, East Rajasthan during 04<sup>th</sup>-07<sup>th</sup> December.

#### Wind Warning, Sea Condition, Fisherman Warning:

##### Wind Warning

##### (a) Along & off north Tamil Nadu & Puducherry Coasts

Gale wind speed reaching 70-80 gusting to 90 kmph is prevailing. Thereafter it is likely to decrease gradually becoming squally wind speed reaching 55-65 gusting to 75 kmph by evening of today, the 30<sup>th</sup> November and 45-55 gusting to 65 kmph by 1<sup>st</sup> December morning.

##### (b) Along & off south Tamil Nadu coast

Gale wind speed reaching 60-70 gusting to 80 kmph is likely to prevail till 30<sup>th</sup> November noon. Thereafter it is likely to decrease gradually becoming squally wind speed reaching 50-60 gusting to 70 kmph by evening of today and 45-55 gusting to 65 kmph by morning of 1<sup>st</sup> December.

##### (c) Southwest Bay of Bengal, Gulf of Mannar, Comorin area and along & off north Sri Lanka coasts

Gale wind speed reaching 60-70 gusting to 80 kmph is likely to prevail till 30<sup>th</sup> November noon. Thereafter it is likely to decrease gradually becoming squally wind speed reaching 50-60 gusting to 70 kmph by evening of today and 45-55 gusting to 65 kmph by morning of 1<sup>st</sup> December.

##### (d) Adjoining Westcentral Bay of Bengal and along & off south Andhra Pradesh coast:

Squally wind speed reaching 55-65 kmph gusting to 75 kmph is likely to prevail till 30<sup>th</sup> afternoon. Thereafter, it is likely to decrease becoming squally wind speed reaching 45-55 kmph gusting to 65 kmph on 01<sup>st</sup> December morning.

## Sea Condition:

### (a) Along & off north Tamil Nadu & Puducherry Coasts

Sea condition is very likely to be High till 30<sup>th</sup> evening. It is very likely to improve gradually becoming very rough to rough by 1<sup>st</sup> December morning and gradually improve thereafter.

### (b) Along & off south Tamil Nadu coast

Sea condition is very likely to be High till 30<sup>th</sup> November noon. It is very likely to improve gradually becoming very rough to rough by morning of 1<sup>st</sup> December and gradually improve thereafter.

### (c) Southwest Bay of Bengal, Gulf of Mannar, Comorin area and along & off Sri Lanka coasts

Sea condition is very likely to be High till 30<sup>th</sup> November noon. It is very likely to improve gradually becoming very rough to rough by morning of 1<sup>st</sup> December and gradually improve thereafter.

### (d) Adjoining Westcentral Bay of Bengal and along & off south Andhra Pradesh coast:

Very rough to rough sea conditions are very likely till evening of 30<sup>th</sup> November. It is likely to improve gradually becoming rough by 01<sup>st</sup> December morning and gradually improve thereafter.

## Storm Surge Warning:

Storm surge of height about 0.5 m to 1m above the astronomical tide (0.4 m during high tide) is likely to inundate the low-lying coastal areas of Tamil Nadu- Puducherry till 30<sup>th</sup> afternoon.

### (iv) Fishermen Warning:

Total suspension of fishing operations in coastal areas of Sri Lanka, Tamil Nadu, Puducherry and south Andhra Pradesh coasts till 01<sup>st</sup> December.

### (b) Fishermen are advised not to venture into

- (i) Southwest Bay of Bengal, Gulf of Mannar, Comorin area and along & off Tamil Nadu, Puducherry & Sri Lanka coasts till 01<sup>st</sup> December.
- (ii) Adjoining areas of westcentral Bay of Bengal and along & off Andhra Pradesh coast till 2<sup>nd</sup> December.
- (iii) Adjoining areas of Southeast Arabian Sea, Lakshadweep, Maldives and along & off Kerala coast till 30<sup>th</sup> November.
- (c) Those out at sea should avoid southwest Bay of Bengal, Gulf of Mannar, Comorin area and along & off Tamil Nadu, Puducherry, south Andhra Pradesh & Sri Lanka coasts; adjoining westcentral Bay of Bengal till 01<sup>st</sup> December and Southeast Arabian Sea, Lakshadweep, Maldives and along & off Kerala coast till 30<sup>th</sup> November.

## ii) Weather conditions and forecast over Delhi/NCR during 30th November-03<sup>rd</sup> December, 2025 (ANNEXURE III)

For more details, kindly refer National Weather Bulletin:

[https://mausam.imd.gov.in/responsive/all\\_india\\_forecast\\_bulletin.php](https://mausam.imd.gov.in/responsive/all_india_forecast_bulletin.php)

For District wise warnings refer: <https://mausam.imd.gov.in/responsive/districtWiseWarningGIS.php>

For Fishermen warning refer <https://rsmcnewdelhi.imd.gov.in/fishermen-warning.php>

## Significant rainfall recorded (in cm) (from 0830 hours IST of yesterday to 0830 hours IST of today):

- ❖ **Tamil Nadu, Puducherry & Karaikal:** Myladuthurai district, Srikazhi Taluk, Thiruvengadu station - 23 cm, Karaikal (dist Karaikal) 19; Sembanarkoil PWD (dist Mayiladuthurai) 17; Mayiladuthurai AWS (dist Mayiladuthurai), Nagapattinam (dist Nagapattinam) 15 Each; Mayiladuthurai (dist Mayiladuthurai), Sirkali (dist Mayiladuthurai), Tiruvarur (dist Tiruvarur) 14 Each; Tondi (dist Ramanathapuram), Tirupoondi (dist Nagapattinam), Thangachimadam (dist Ramanathapuram) 13 Each; Sethiathope (dist Cuddalore), Vedaranyam (dist Nagapattinam), Nannilam (dist Tiruvarur), Velankanni (dist Nagapattinam), Kodayakarai (dist Nagapattinam), Kurungulam (dist Thanjavur) 12 Each; Srimushnam (dist Cuddalore), Thiruthuraipoondi

(dist Tiruvarur), Tiruvarur AWS (dist Tiruvarur), Thalaigayyer (dist Nagapattinam), Thirukuvalai (dist Nagapattinam), Neivasal Thenpathi (dist Thanjavur), Echanviduthi (dist Thanjavur) 11 Each; Cuddalore (dist Cuddalore), Parangipettai (dist Cuddalore), Kollidam (dist Mayiladuthurai), Tiruvadanai (dist Ramanathapuram), Orthanad (dist Thanjavur), Mannargudi (dist Tiruvarur), Mimisal (dist Pudukkottai), Collectorate (dist Cuddalore), Theerthandathanam (dist Ramanathapuram) 10 Each; Chidambaram (dist Cuddalore), Rameswaram (dist Ramanathapuram), Pattukottai (dist Thanjavur), Peravurani (dist Thanjavur), Thiruvudaimaruthur (dist Thanjavur), Needamangalam (dist Tiruvarur), Valangaiman (dist Tiruvarur), Manalmedu (dist Mayiladuthurai), Avudayarkoil (dist Pudukkottai), Vattanam (dist Ramanathapuram), Ayyampettai (dist Thanjavur), Budalur (dist Thanjavur), Vadakuthu (dist Cuddalore), Ayinkudi (dist Pudukkottai), Nagudi (dist Pudukkottai), Vettikadu (dist Thanjavur) 9 Each; Arantangi (dist Pudukkottai), Pamban (dist Ramanathapuram), Madukkur (dist Thanjavur), Thanjavur (dist Thanjavur), Tiruvaiyaru (dist Thanjavur), Sivakasi (dist Virudhunagar), Aduthurai AWS (dist Thanjavur), Thanjavur PTO (dist Thanjavur), Bhuvanagiri (dist Cuddalore), Mandapam (dist Ramanathapuram), Manjalaru (dist Thanjavur), Annamalai Nagar (dist Cuddalore), Lalpet (dist Cuddalore), Nandhiyar Head (dist Trichy) 8 Each; K.m.koil (dist Cuddalore), Mahabalipuram (dist Chengalpattu), Tarangambadi (dist Mayiladuthurai), Puducherry (dist Puducherry), Alangudi (dist Pudukkottai), Pudukkottai (dist Pudukkottai), Devakottai (dist Sivaganga), Adirampatnam (dist Thanjavur), Vallam (dist Thanjavur), Muthupet (dist Tiruvarur), Pandavaiyar Head (dist Tiruvarur), Kodavasal (dist Tiruvarur), Kothavacherry (dist Cuddalore), Lower Anaicut (dist Thanjavur) 7 Each;

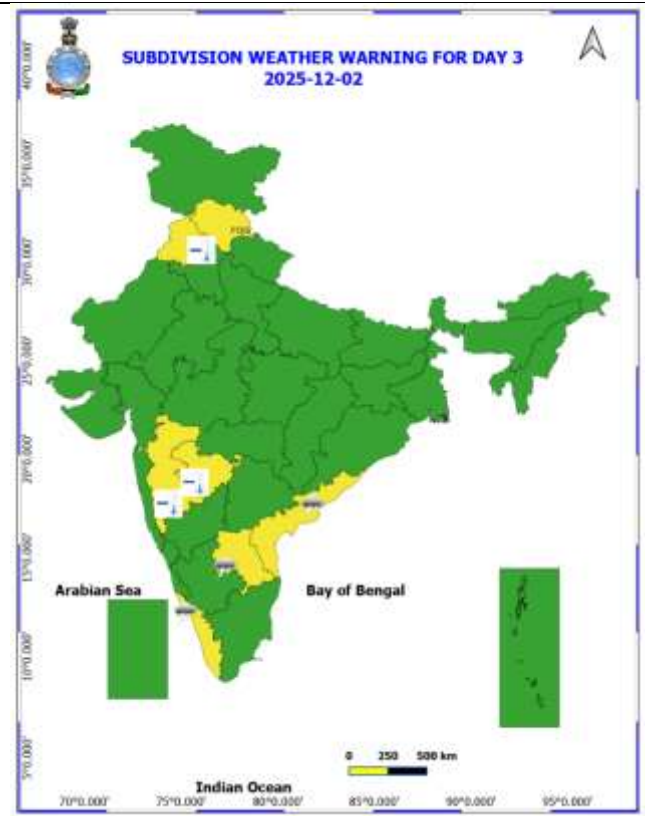
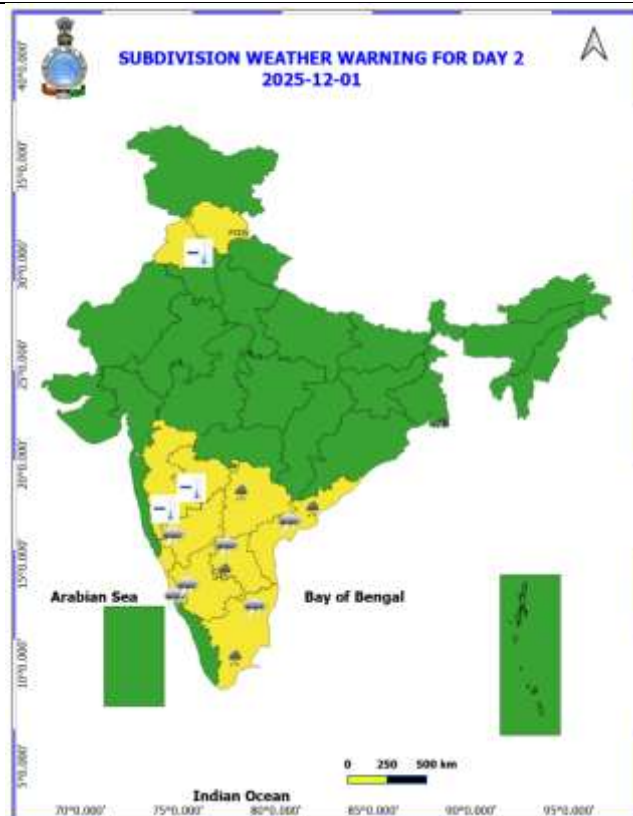
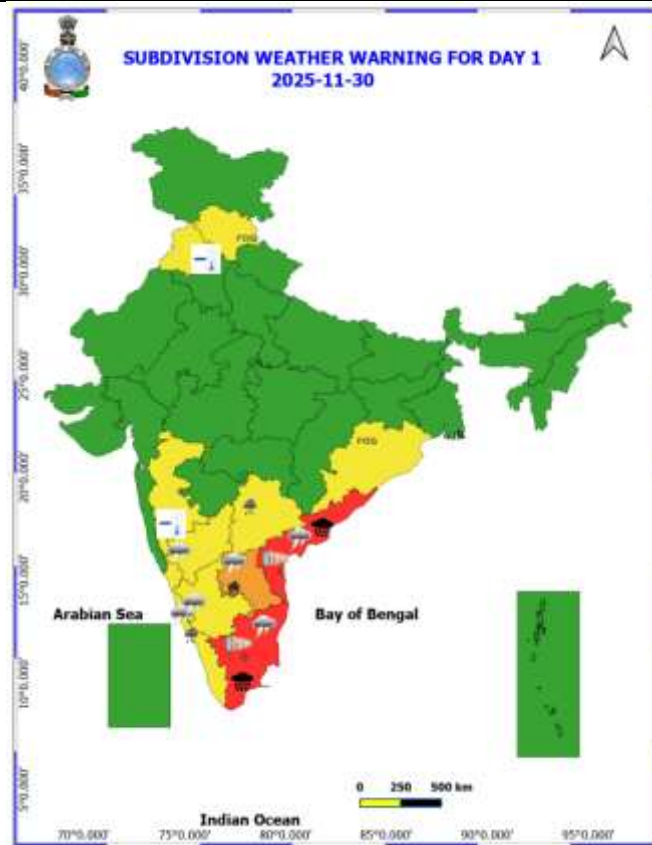
**Visibility reported ( $\leq 200$  m) (in meter):**

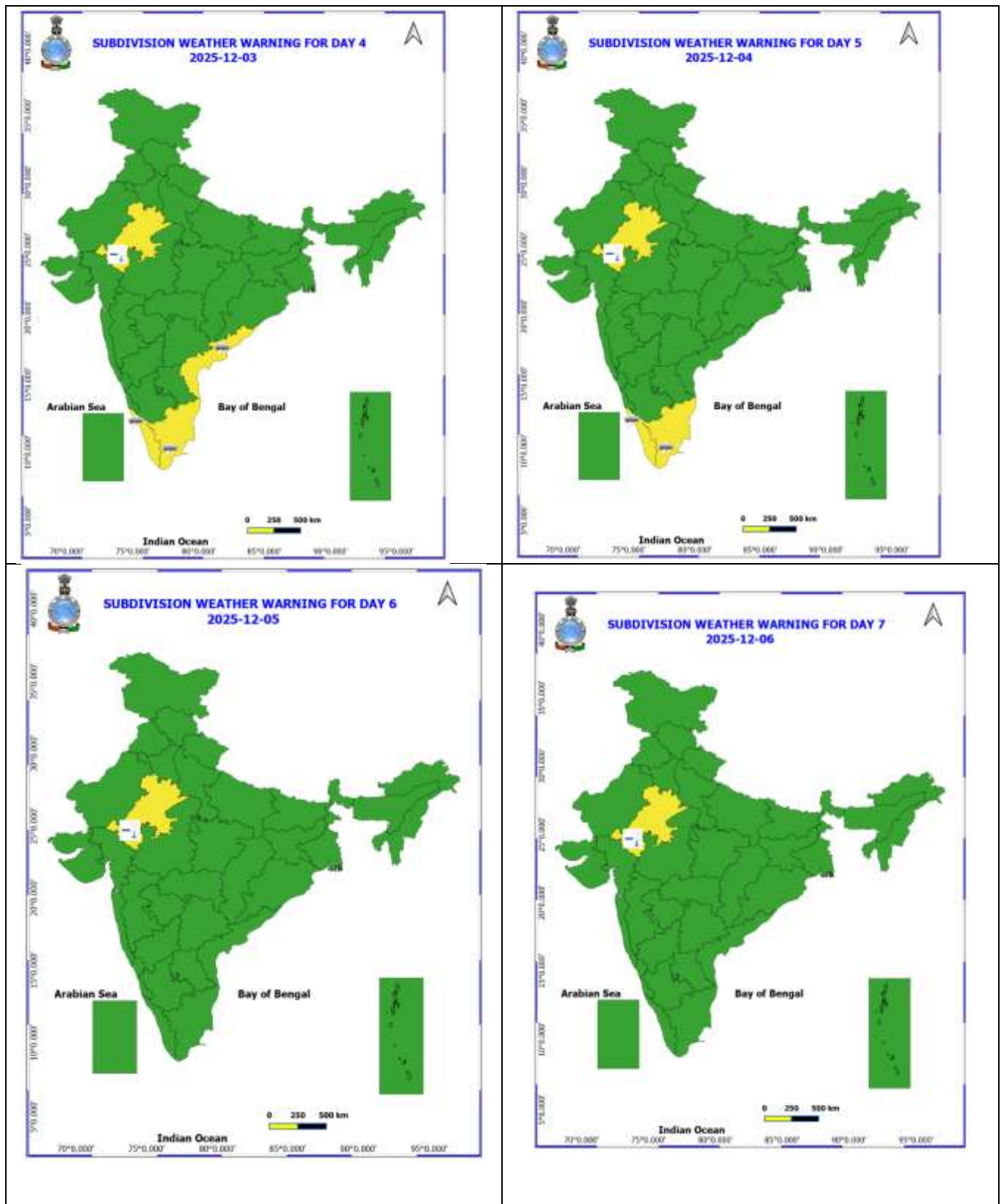
- ❖ **Himachal Pradesh:** Bilaspur -100m
- ❖ **Odisha:** Rourkela-100 m
- ❖ **Manipur:** Imphal-200m



Table-1								
7 Days Rainfall Forecast								
S.No.	Subdivision	30- Nov	1- Dec	2- Dec	3- Dec	4- Dec	5- Dec	6- Dec
		Day 1	Day 2	Day 3	Day 4	Day 5	Day 6	Day 7
1	ANDAMAN & NICOBAR ISLANDS	ISOL	ISOL	ISOL	ISOL	ISOL	SCT	SCT
2	ARUNACHAL PRADESH	DRY	DRY	DRY	DRY	DRY	DRY	DRY
3	ASSAM & MEHGHALAYA	DRY	DRY	DRY	DRY	DRY	DRY	DRY
4	NAGALAND, MANIPUR, MIZORAM AND TRIPURA	DRY	DRY	DRY	DRY	DRY	DRY	DRY
5	SUB HIMALAYAN WEST BENGAL & SIKKIM	ISOL	DRY	ISOL	ISOL	DRY	DRY	DRY
6	GANGETIC WEST BENGAL	DRY	DRY	DRY	DRY	DRY	DRY	DRY
7	ODISHA	ISOL	ISOL	DRY	DRY	DRY	DRY	DRY
8	JHARKHAND	DRY	DRY	DRY	DRY	DRY	DRY	DRY
9	BIHAR	DRY	DRY	DRY	DRY	DRY	DRY	DRY
10	EAST UTTAR PRADESH	DRY	DRY	DRY	DRY	DRY	DRY	DRY
11	WEST UTTAR PRADESH	DRY	DRY	DRY	DRY	DRY	DRY	DRY
12	UTTARAKHAND	DRY	DRY	DRY	DRY	ISOL	ISOL	ISOL
13	HARYANA, CHANDIGARH & DELHI	DRY	DRY	DRY	DRY	DRY	DRY	DRY
14	PUNJAB	DRY	DRY	DRY	DRY	DRY	DRY	DRY
15	HIMACHAL PRADESH	DRY	DRY	DRY	DRY	ISOL	ISOL	DRY
16	JAMMU AND KASHMIR AND LADAKH	DRY	DRY	DRY	DRY	DRY	ISOL	DRY
17	WEST RAJASTHAN	DRY	DRY	DRY	DRY	DRY	DRY	DRY
18	EAST RAJASTHAN	DRY	DRY	DRY	DRY	DRY	DRY	DRY
19	WEST MADHYA PRADESH	DRY	DRY	DRY	DRY	DRY	DRY	DRY
20	EAST MADHYA PRADESH	DRY	DRY	DRY	DRY	DRY	DRY	DRY
21	GUJRAT REGION	DRY	DRY	DRY	DRY	DRY	DRY	DRY
22	SAURASHTRA & KUTCH	DRY	DRY	DRY	DRY	DRY	DRY	DRY
23	KONKAN & GOA	DRY	DRY	DRY	DRY	DRY	DRY	DRY
24	MADHYA MAHARASHTRA	DRY	DRY	DRY	DRY	DRY	DRY	DRY
25	MARATHWADA	DRY	DRY	DRY	DRY	DRY	DRY	DRY
26	VIDARBHA	ISOL	ISOL	DRY	DRY	DRY	DRY	DRY
27	CHHATTISGARH	ISOL	ISOL	ISOL	DRY	DRY	DRY	DRY
28	COASTAL ANDHRA PRADESH	FWS	FWS	SCT	SCT	ISOL	ISOL	ISOL
29	TELANGANA	SCT	SCT	ISOL	DRY	DRY	DRY	DRY
30	RAYALASEEMA	FWS	FWS	SCT	SCT	SCT	ISOL	ISOL
31	TAMILNADU & PUDUCHERRY	SCT	ISOL	ISOL	SCT	SCT	SCT	ISOL
32	COSTAL KARNATAKA	ISOL	DRY	DRY	DRY	ISOL	ISOL	ISOL
33	NORTH INTERIOR KARNATAKA	DRY	DRY	ISOL	ISOL	ISOL	DRY	DRY
34	SOUTH INTERIOR KARNATAKA	SCT	ISOL	ISOL	ISOL	ISOL	ISOL	ISOL
35	KERALA AND MAHE	SCT	SCT	SCT	FWS	FWS	FWS	SCT
36	LAKSHADWEEP	DRY	DRY	SCT	SCT	FWS	FWS	SCT

- As the lead period increases forecast accuracy decrease.





- Action may be taken based on ORANGE AND REDCOLOUR warnings.
- Vulnerable regions likely urban and hilly areas action may be initiated for heavy rainfall warning.
- As the lead period increases forecast accuracy decreases.

Detailed districtwise MultiHazard weather warning for next five days available at  
<https://mausam.imd.gov.in/responsive/districtWiseWarningGIS.php>



**Weather forecast over Delhi/NCR during 30<sup>th</sup> November to 03<sup>rd</sup> December 2025****Past Weather:**

Slight fall in minimum temperatures by 01-02°C and No significant change in maximum temperatures during past 24 hours over Delhi. The minimum temperatures are in the range of 08-10°C and maximum temperatures were in the range of 24-27°C. The minimum temperatures are appreciably below normal (-3.1 to -5.0°C) at isolated places and below normal (-1.6 to -3.0) at a few places and normal (-1.5 to 1.5) over remaining parts of Delhi. The maximum temperatures were below normal (-1.6 to -3.0°C) at isolated places and normal (-1.5 to 1.5) at remaining parts of Delhi. South-Westerly winds prevailed with wind speed upto 13 kmph in past 24 hours over Delhi. Partly cloudy sky conditions with wind from the southwest direction with a wind speed up to 10 kmph in early morning hours, gradually decreasing up to 05 kmph from the west-northwest direction prevailed over the region in the forenoon today.

**Weather Forecast:**

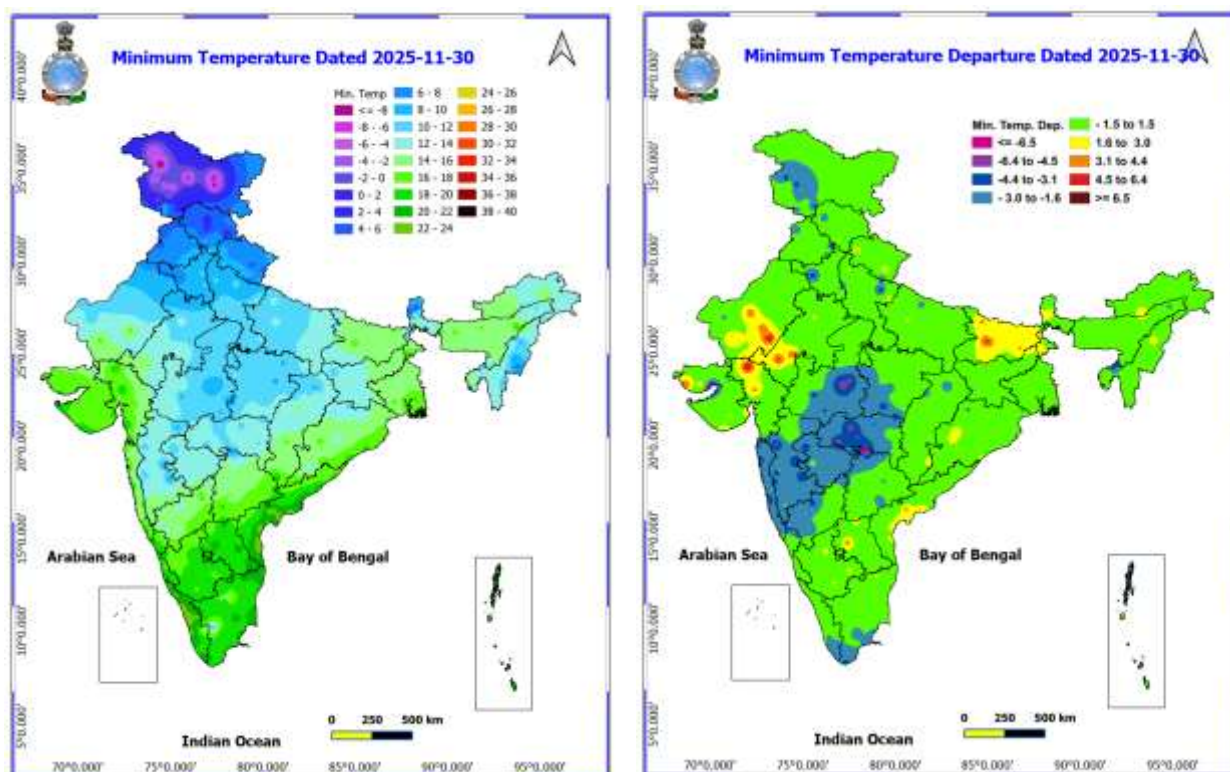
**30.11.2025:** Partly cloudy sky. Mist/Haze during the night. The maximum temperatures are likely to be in the range of 22 to 24°C. The maximum temperatures will be below normal over Delhi. The predominant surface wind is likely to be coming from the west-northwest direction wind speed up to 05 kmph during the afternoon hours. The wind speed will be up to 05 kmph from the northwest direction during the evening and night.

**01.12.2025:** Mainly clear sky. Shallow fog at few places during morning hours. The maximum and minimum temperatures over Delhi are likely to be in the range of 23 to 25°C and 08 to 10°C respectively. The minimum temperatures will be near normal and maximum temperatures will be below normal (1.0 to 2.0 °C) over Delhi. The predominant surface wind is likely to be coming from the west direction with calm wind gradually increase becoming up to 05 kmph during morning hours. The wind speed will be less than 05 kmph from the northwest direction in the afternoon. The wind speed will be less than 05 kmph from the northwest direction during the evening and night.

**02.12.2025:** Mainly clear sky. Shallow fog during morning hours. The maximum and minimum temperatures over Delhi are likely to be in the range of 24 to 26°C and 10 to 12°C respectively. The minimum temperatures will be above normal (2.0 to 4.0 °C) and maximum temperatures will be near normal over Delhi. The predominant surface wind is likely to be from the northwest direction with calm wind gradually increase speed up to 05 kmph during morning hours. The wind speed be up to 05 kmph from the north-northwest direction in the afternoon. The wind speed will be less than 05 kmph from the northwest direction during the evening and night.

**03.12.2025:** Mainly clear sky. Shallow to moderate fog during morning hours. The maximum and minimum temperatures over Delhi are likely to be in the range of 23 °C to 25°C and 09 °C to 11°C, respectively. The minimum temperatures will be above normal (1.0 to 3.0 °C), and the maximum temperature will be below normal (1.0 to 2.0 °C) over Delhi. The predominant surface wind is likely to be from with calm wind gradually increase becoming up to 05 kmph from northwest direction during morning hours. The wind speed will increase up to 10 kmph from the northwest direction in the afternoon. The predominant surface wind is likely to be from the northwest direction with wind speed up to 10 kmph during the evening and night.





### Impact & Action Suggested due to

- ❖ **Isolated extremely heavy falls** over coastal Tamil Nadu, Coastal Andhra Pradesh & Yanam on 30<sup>th</sup> November and **isolated very heavy rainfall** likely over Rayalaseema on 30<sup>th</sup> November.

### Impact Expected

- Localized Flooding of roads, water logging in low lying areas and closure of underpasses mainly in urban areas of the above region.
- Occasional reduction in visibility due to heavy rainfall.
- Disruption of traffic in major cities due to water logging in roads leading to increased travel time.
- Minor damage to kutcha roads.
- Possibilities of damage to vulnerable structure.
- Localized Landslides/Mudslides/landslips/mudslips/landsinks/mudsinks.
- Damage to horticulture and standing crops in some areas due to inundation.
- It may lead to riverine flooding in some river catchments (for riverine flooding please visit Web page of CWC)

### Action Suggested

- Check for traffic congestion on your route before leaving for your destination.
- Follow any traffic advisories that are issued in this regard.
- Avoid going to areas that face the water logging problems often.
- Avoid staying in vulnerable structure.

### **Agromet advisories for likely impact of Heavy / Heavy to Very Heavy Rainfall**

- In **Tamil Nadu**, drain out excess rain water from the fields of rice, groundnut, sugarcane, cotton, black gram, maize and vegetables and plantations of coconut, banana, areca nut, mango, rubber, cinnamon and black pepper. Strengthen irrigation channels and field bunds in rice to avoid crop lodging. Provide support to banana plants with wooden poles to prevent them from falling.
- In **Andhra Pradesh**, provide extensive drainage in *rabi* rice nurseries, transplanted rice, Bengal gram, red gram, maize, jowar, already sown crops of ragi, chickpea, black gram, vegetables and orchards. Keep the harvested produce of rice, maize, groundnut and cotton to safer places. Postpone picking of cotton, harvesting of rice and sowing of ragi, chickpea & black gram.
- In **Kerala**, make necessary arrangements to drain out excess rain water from the fields of rice, vegetables and plantations of banana, coconut, cardamom and black pepper. Carry out propping in banana to prevent their falling due to heavy rainfall. Undertake staking for vegetables grown in pandals.
- In **Telangana**, make necessary arrangements to drain out excess water from rice nurseries, groundnut, Bengal gram, vegetables and fruit orchards.

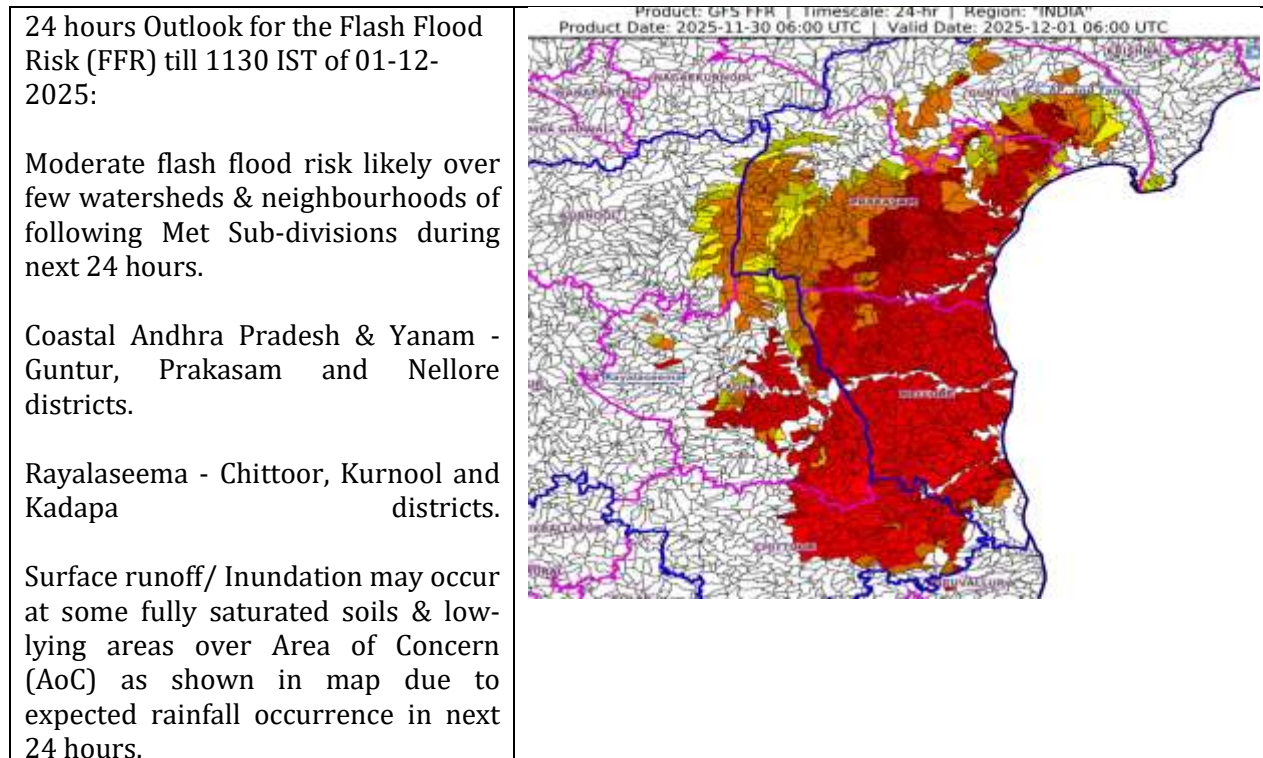
### **Livestock / Fishery**

- Keep the animals inside the shed during heavy rainfall and provide them balanced feed.
- Store feed and fodder in a safe place to prevent spoilage.
- Construct an outlet with proper netting around the ponds to drain out excess water, thereby preventing fish from escaping in case of overflow.

### **Agromet advisories for likely impact of Thunderstorm / Gusty Winds**

- Provide mechanical support to horticultural crops and staking or support to vegetables and young fruit plants / fruit-bearing plants to avoid lodging due to strong winds.

## Flash flood guidance:



### Legends & abbreviations:

- ❖ **Heavy Rain:**64.5-115.5mm; **Very Heavy Rain:**115.6-204.4mm; **Extremely Heavy Rain:** >204.4mm.
- ❖ **Obsy:** Observatory; Automatic Weather Station; **ARG:** Automatic Rain Gauge; **dist:** District; **NH:** National Highway; **KVK:** Krishi Vigyan Kendra; **DVC:** Damodar Valley Corporation; **PTO:** Part Time Office, **Aero:** Aerodrome, **IAF:** Indian Air Force.
- ❖ **Region wise classification of meteorological Sub-Divisions:**
  - **Northwest India:** Western Himalayan Region (Jammu-Kashmir-Ladakh-Gilgit-Baltistan-Muzaffarabad, Himachal Pradesh and Uttarakhand); Punjab, Haryana-Chandigarh-Delhi; West Uttar Pradesh, East Uttar Pradesh, West Rajasthan and East Rajasthan.
  - **Central India:** West Madhya Pradesh, East Madhya Pradesh, Vidarbha and Chhattisgarh.
  - **East India:** Bihar, Jharkhand, Sub-Himalayan West Bengal & Sikkim; Gangetic West Bengal, Odisha and Andaman & Nicobar Islands.
  - **Northeast India:** Arunachal Pradesh, Assam & Meghalaya and Nagaland, Manipur, Mizoram & Tripura.
  - **West India:** Gujarat Region, Saurashtra & Kutch, Konkan & Goa, Madhya Maharashtra and Marathawada.
  - **South India:** Coastal Andhra Pradesh & Yanam, Telangana, Rayalaseema, Coastal Karnataka, North Interior Karnataka, South Interior Karnataka, Kerala & Mahe, Tamil Nadu, Puducherry & Karaikal and Lakshadweep.



## LEGENDS

1. अंडमान और निकोबार द्वीपसमूह

2. अरुणाचल प्रदेश

3. असम और मेघालय

4. नागालैंड, मणिपुर, मिजोरम और त्रिपुरा

5. उप-हिमालयी पश्चिम बंगाल और सिक्किम

6. गंगीय पश्चिम बंगाल

7. ओडिशा

8. झारखंड

9. बिहार

10. पूर्वी उत्तर प्रदेश

11. पश्चिम उत्तर प्रदेश

12. उत्तराखंड

13. हरियाणा, चंडीगढ़ और दिल्ली

14. पंजाब

15. हिमाचल प्रदेश

16. जम्मू और कश्मीर और लद्दाख

17. पश्चिम राजस्थान

18. पूर्वी राजस्थान

19. पश्चिम मध्य प्रदेश

20. पूर्वी मध्य प्रदेश

21. गुजरात

22. सौराष्ट्र

23. कोंकण और गोवा

24. मध्य महाराष्ट्र

25. मराठवाड़ा

26. विदर्भ

27. छत्तीसगढ़

28. तटीय आंध्र प्रदेश और यनम

29. तेलंगाना

30. रायलसीमा

31. तमिलनाडु, पुडुचेरी और कराईकल

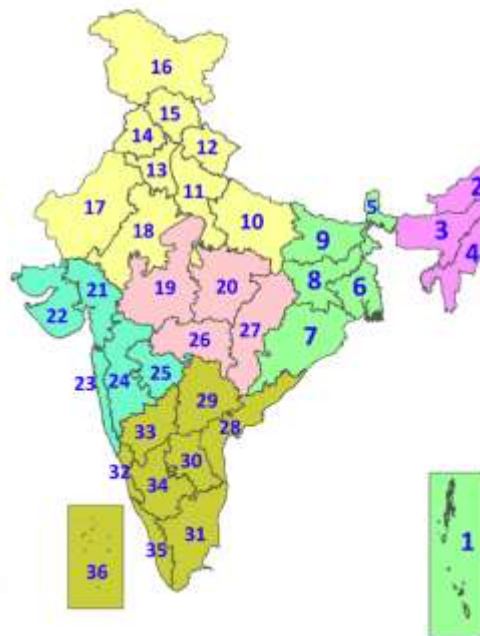
32. तटीय कर्नाटक

33. आंतरिक उत्तरी कर्नाटक

34. आंतरिक दक्षिणी कर्नाटक

35. केरल और माहे

36. लक्षद्वीप



1. Andaman & Nicobar Islands

2. Arunachal Pradesh

3. Assam & Meghalaya

4. Nagaland, Manipur, Mizoram & Tripura

5. Sub-Himalayan West Bengal & Sikkim

6. Gangetic West Bengal

7. Odisha

8. Jharkhand

9. Bihar

10. East Uttar Pradesh

11. West Uttar Pradesh

12. Uttarakhand

13. Haryana, Chandigarh & Delhi

14. Punjab

15. Himachal Pradesh

16. Jammu & Kashmir and Ladakh

17. West Rajasthan

18. East Rajasthan

19. West Madhya Pradesh

20. East Madhya Pradesh

21. Gujarat

22. Saurashtra

23. Konkan & Goa

24. Madhya Maharashtra

25. Marathwada

26. Vidarbha

27. Chhattisgarh

28. Coastal Andhra Pradesh & Yanam

29. Telangana

30. Rayalaseema

31. Tamilnadu, Puducherry & Karaikal

32. Coastal Karnataka

33. North Interior Karnataka

34. South Interior Karnataka

35. Kerala & Mahe

36. Lakshadweep

## SPATIAL DISTRIBUTION (% of Stations reporting)

% Stations	Category	% Stations	Category
76-100	Widespread (WS/Most Places)	26-50	Scattered (SCT/A Few Places)
51-75	Fairly Widespread (FWS/Many Places)	1-25	Isolated (ISOL)



Fog



Heavy Snow



Cold Wave



Heavy Rain



Dust Storm



Cold Day



Very Heavy Rain



Heat Wave



Ground Frost



Extremely Heavy Rain



Warm Night



Thunder & Lightning



Hot Day



Hailstorm



Hot & Humid



Dust Raising Winds



Strong Surface Winds

### COLOUR CODED WARNING

No Warning (No Action)

Watch (Be Aware)

Alert (Be Prepared To Take Action)

Warning (Take Action)

### Probabilistic Forecast

Terms	Probability of Occurrence (%)
Unlikely	< 25
Likely	25 - 50
Very Likely	50 - 75
Most Likely	> 75

\* Red colour warning does not mean "Red Alert", Red colour warning means "Take Action".

Forecast and Warning for any day is valid from 0830 hours IST of day till 0830 hours IST of next day.

For more details, kindly visit <https://mausam.imd.gov.in> or contact: 011-2434-4599

(Service to the Nation since 1875)



## DEFINITION/CRITERIA

### Rain/ Snow \*

Heavy: 64.5 to 115.5 mm/cm \*  
Very Heavy: 115.6 to 204.4 mm/cm \*  
Extremely Heavy: > 204.4 mm/cm \*

### Heat Wave

When maximum temperature of a station reaches  $\geq 40^{\circ}\text{C}$  for plains and  $\geq 30^{\circ}\text{C}$  for hilly regions

(a) Based on Departure from normal

Heat Wave: Maximum Temperature Departure from normal  $4.5^{\circ}\text{C}$  to  $6.4^{\circ}\text{C}$ .

Severe Heat Wave: Maximum Temperature Departure from normal  $\geq 6.5^{\circ}\text{C}$

(b). Based on Actual maximum temperature

Heat Wave: When actual maximum temperature  $\geq 45^{\circ}\text{C}$ .

Severe Heat Wave: When actual maximum temperature  $\geq 47^{\circ}\text{C}$ .

(c). Criteria for heat wave for coastal stations

When maximum temperature departure is  $> 4.5^{\circ}\text{C}$  from normal. Heat Wave may be described provided maximum temperature  $\geq 37^{\circ}\text{C}$ .

### Warm Night

When maximum temperature remains  $40^{\circ}\text{C}$

Warm Night: When minimum temperature departure  $4.5^{\circ}\text{C}$  to  $6.4^{\circ}\text{C}$ .

Severe Warm Night: When minimum temperature departure  $> 6.4^{\circ}\text{C}$ .

### Cold Wave

When minimum temperature of a station  $\leq 10^{\circ}\text{C}$  for plains and  $\leq 0^{\circ}\text{C}$  for hilly regions.

(a). Based on departure

Cold Wave: Minimum Temperature Departure from normal  $-4.5^{\circ}\text{C}$  to  $-6.4^{\circ}\text{C}$ .

Severe Cold Wave: Minimum Temperature Departure from normal  $\leq -6.5^{\circ}\text{C}$

(b) Based on actual Minimum Temperature (for Plains only)

Cold Wave: When Minimum Temperature is  $\leq 4.0^{\circ}\text{C}$

Severe Cold Wave: When Minimum Temperature is  $\leq 2.0^{\circ}\text{C}$

(c) For Coastal Stations

When Minimum Temperature departure is  $\leq -4.5^{\circ}\text{C}$  & actual Minimum Temperature is  $\leq 15^{\circ}\text{C}$

### Cold Day

When minimum temperature of a station  $\leq 10^{\circ}\text{C}$  for plains and  $\leq 0^{\circ}\text{C}$  for hilly regions

Based on departure

Cold Day: Maximum Temperature Departure from normal  $-4.5^{\circ}\text{C}$  to  $-6.4^{\circ}\text{C}$ .

Severe Cold Day: Maximum Temperature Departure from normal  $\leq -6.5^{\circ}\text{C}$

### Fog

Phenomenon of small droplets suspended in air and the horizontal visibility  $< 1\text{km}$

Moderate Fog: When the visibility between 500-200 metres

Dense Fog: when the visibility between 50- 200 metres

Very Dense Fog: when the visibility  $< 50$  metres

### Thunderstorm

Sudden electrical discharges manifested by a flash of light (Lightning) and a sharp rumbling sound (thunder)

### Dust/Sand Storm

An ensemble of particles of dust or sand energetically lifted to great heights by a strong and turbulent wind.

### Frost

Ice deposits on ground

Air temperature  $\leq 4^{\circ}\text{C}$  ( over Plains)

### Squall

A strong wind that rises suddenly, lasts for atleast 1 minute.

Moderate: Wind speed 52-61 kmph

Severe: Wind speed 62-67 kmph

Very Severe: Wind speed  $> 67$  kmph

### Sea State

Effect of various waves in the sea over specific area

Rough to very rough: Wind speed 41-62 kmph (22-33 knots) & Wave height 2.5-6 metre

High to very high: Wind speed 63-117 kmph ( 34-63 knots) & Wave height 6-14 metre

Phenomenal: Wind speed  $> 117$  kmph ( $> 63$  knots) & Wave height  $> 14$  metre

### Cyclone

Cyclonic Storm: Wind speed 62-87 kmph (34-47 knots)

Severe Cyclonic Storm: Wind speed 88-117 kmph (48-63 knots)

Very Severe Cyclonic Storm: Wind speed 118-165 kmph (64 - 89 knots)

Extremely Severe Cyclonic Storm: Wind speed 166-220 kmph (90 -119 knots)

Super Cyclone Storm: Wind speed  $> 220$  kmph ( $> 119$  knots)

\* Red colour warning does not mean "Red Alert", Red colour warning means "Take Action".

Forecast and Warning for any day is valid from 0830 hours IST of day till 0830 hours IST of next day.

For more details, kindly visit <https://mausam.imd.gov.in> or contact: 011-2434-4599

(Service to the Nation since 1875)