



**Government of India
Ministry of Earth Sciences
India Meteorological Department**



Press Release

Date: 01st December, 2025

Time of Issue: 1400 hours IST

Subject: (i) The Cyclonic Storm Ditwah weakened into a Deep Depression yesterday, the 30 November over southwest Bay of Bengal and adjoining north Tamil Nadu-Puducherry. Under its influence, isolated heavy to very heavy rainfall likely over north coastal Tamil Nadu and Coastal Andhra Pradesh on today, the 01st December, 2025.
(ii) Cold wave conditions very likely to prevail in isolated pockets over Punjab and Haryana, Chandigarh & Delhi during 02nd -06th; north Madhya Maharashtra on 02nd & 03rd and north Rajasthan during 04th -06th December, 2025.

Realised weather during past 24 hours ending at 0830 hours IST of today, the 01st December, 2025:

- ❖ **Isolated Heavy rainfall** over Coastal Andhra Pradesh.
- ❖ **Dense fog (visibility 50-199 m):** reported in isolated pockets of Meghalaya and Manipur.
- ❖ **Cold wave conditions** at isolated places over north Madhya Maharashtra.

Weather Systems, Forecast and Warnings (refer to ANNEXURE I & II):

- ❖ Yesterday's Cyclonic Storm Ditwah [Pronunciation: Ditwah] over southwest Bay of Bengal and adjoining north Tamil Nadu-Puducherry coasts weakened into a Deep Depression and lay centered at 1730 hrs IST of 30th November 2025 over the same region. The Deep Depression (Remnant of Cyclonic Storm Ditwah) over southwest Bay of Bengal and adjoining north Tamil Nadu-Puducherry coasts moved slowly northwards with the speed of 05 kmph during past 6 hours and lay centered at 0830 hrs IST of today, the 01st December 2025 over southwest Bay of Bengal and adjoining areas of westcentral Bay of Bengal, North Tamil Nadu-Puducherry & South Andhra Pradesh coasts, near latitude 12.8°N and longitude 80.6°E, about 50 km east-southeast of Chennai (India), 130 km northeast of Puducherry (India), 150 km northeast of Cuddalore (India), 200 km south-southeast of Nellore (India). The minimum distance of the centre of the deep depression from north Tamil Nadu-Puducherry coasts is about 40 km. It is very likely to move slowly northwards parallel to North Tamil Nadu-Puducherry and south Andhra Pradesh coasts and weaken into a depression during next 12 hours. The system will be centered over southwest & adjoining west central Bay of Bengal within a minimum distance of 30 km from the Chennai coast by noon of today, the 01st December.
- ❖ A **Western disturbance** now seen as an upper air cyclonic circulation over north Pakistan & neighbourhood in lower tropospheric level with a trough aloft in middle tropospheric level with its axis in middle tropospheric level roughly along Long. 68°E to the north of Lat. 25°N.
- ❖ An induced cyclonic circulation lies over north Haryana & neighbourhood in lower tropospheric level.
- ❖ A cyclonic circulation lies over northeast Assam & neighbourhood in lower tropospheric level.
- ❖ A fresh feeble Western Disturbance is likely to influence western Himalayan region from 05th December 2025.

Under the influence of these systems, the following weather is likely:

- ❖ **Under the influence of The Deep Depression (Remnant of Cyclonic Storm Ditwah) over southwest Bay of Bengal and adjoining north Tamil Nadu-Puducherry coasts, heavy rainfall likely** over Coastal Andhra Pradesh & Yanam, Rayalaseema on 01st & 02nd December, Kerala & Mahe on 03rd December **with**

isolated extremely heavy rainfall likely over north coastal Tamil Nadu, Puducherry and **isolated heavy to very heavy rainfall** likely over Coastal Andhra Pradesh & Yanam on 01st December.

- ❖ Isolated to scattered rainfall accompanied with **thunderstorm, lightning likely** over Tamil Nadu, Kerala & Mahe Coastal Andhra Pradesh & Yanam, Rayalaseema during 01st-04th December.
- ❖ Strong surface wind (40-50 kmph) is likely prevailed over Tamil Nadu, Coastal Andhra Pradesh & Yanam and Rayalaseema on 01st December.

Temperature Conditions during past 24 hours till 0830 hours IST of today:

- ❖ **Minimum temperatures** are in the range of **less than 6°C** at most places over Jammu-Kashmir-Ladakh-Gilgit-Baltistan-Muzaffarabad; at isolated places over Haryana Chandigarh & Delhi, Uttarakhand and Himachal Pradesh; in the **range of 6°-10°C** at many places over Uttar Pradesh; at few places over Rajasthan and Madhya Pradesh and at isolated places over Maharashtra. **The lowest minimum temperature of 3.5 °C is reported at Hissar (Haryana) over the plains of India.**
- ❖ **Minimum Temperature were** below normal (-1.6°C to -3.0°C) at most places over Haryana Chandigarh & Delhi, at many places over Madhya Maharashtra, Marathwada and Konkan & Goa; at a few places over West Uttar Pradesh; at isolated places over East Uttar Pradesh, West Madhya Pradesh, Telangana and Vidarbha. [\(refer to ANNEXURE IV\)](#)

Forecast of minimum temperatures:

- ❖ Gradual fall in minimum temperature likely by 2-3°C over Northwest India during next 4 days and no large change thereafter.
- ❖ No large change in minimum temperature likely over Central India for next 48 hours, fall by 2-3°C during subsequent 3 days and no large change thereafter.
- ❖ No large change in minimum temperature likely for next 24 hours over East India, fall by 2-3 °C during subsequent 4 days and no large change thereafter.

Dense Fog & Cold wave warning Warnings:

- ❖ **Cold wave conditions** very likely to prevail in isolated pockets over Punjab and Haryana, Chandigarh & Delhi during 02nd -06th; north Madhya Maharashtra on 02nd & 03rd and north Rajasthan during 04th -06th December, 2025.
- ❖ **Dense fog conditions** very likely to prevail during early morning hours in isolated pockets of Manipur on 02nd and 03rd; over Meghalaya on 02nd, over Himachal Pradesh and Odisha on 03rd & 04th December.

Wind Warning, Sea Condition, Fisherman Warning:

Wind Warning

(a) Southwest and adjoining westcentral Bay of Bengal and along & off north Tamil Nadu, Puducherry and South Andhra Pradesh Coasts

Squally wind speed reaching 50-60 gusting to 70 kmph is prevailing and it is likely to decrease gradually becoming 45-55 gusting to 65 kmph by 1st December evening and 40-50 gusting to 60 kmph by 2nd December morning.

(b) Along & off south Tamil Nadu coast, Gulf of Mannar, Comorin area and along & off north Sri Lanka coast

Squally wind speed reaching 45-55 gusting to 65 kmph is prevailing and it is likely to decrease gradually becoming 40-50 gusting to 60 kmph by 2nd December morning.

Sea Condition:

(a) Southwest and adjoining westcentral Bay of Bengal and along & off north Tamil Nadu, Puducherry and South Andhra Pradesh Coasts:

Very rough to rough sea conditions are likely to prevail on 01st December, becoming rough by 2nd December morning and to gradually improve thereafter.

(b) Along & off south Tamil Nadu coast, Gulf of Mannar, Comorin area and along & off north Sri Lanka coast

Very rough to rough sea conditions are likely to prevail on 01st December. It would gradually improve becoming rough on 2nd December and gradually improve thereafter.

Fishermen Warning:

- (a) Total suspension of fishing operations over southwest and adjoining westcentral Bay of Bengal and along & off Tamil Nadu, Puducherry and south coastal Andhra Pradesh & north Sri Lanka, Gulf of Mannar, Comorin area till 2nd December morning.
- (b) Those out at sea should avoid southwest and adjoining westcentral Bay of Bengal and along & off Tamil Nadu, Puducherry and south coastal Andhra Pradesh & north Sri Lanka, Gulf of Mannar, Comorin area till 2nd December morning.

In addition to the fishermen warnings associated with the system over the southwest Bay of Bengal, the fishermen warnings are included as below:

Squally wind with wind speed 45 kmph to 55 kmph gusting to 65 kmph will prevail along and off Somalia coast on day 1.

Swell surge/high wave warnings: -nil.

ii) Weather conditions and forecast over Delhi/NCR during 01st December – 04th December, 2025 (ANNEXURE III)

For more details, kindly refer National Weather Bulletin:

https://mausam.imd.gov.in/responsive/all_india_forecast_bulletin.php

For District wise warnings refer: <https://mausam.imd.gov.in/responsive/districtWiseWarningGIS.php>

For Fishermen warning refer <https://rsmcnewdelhi.imd.gov.in/fishermen-warning.php>

Significant rainfall recorded (in cm) (from 0830 hours IST of yesterday to 0830 hours IST of today):

Coastal Andhra Pradesh & Yanam: Kavali (dist Spsr Nellore) 11; Atmakur (dist Spsr Nellore) 5; Rapur (dist Spsr Nellore), Nellore (dist Spsr Nellore) 4 Each; Kandukur (dist Spsr Nellore), Kakinada (dist Kakinada) 3 Each; Narsapuram (dist West Godavari), Amalapuram (dist B R Ambedkar Konaseema), Yanam (dist Yanam) 2 Each;

Tamil Nadu, Puducherry & Karaikal: Mahabalipuram (dist Chengalpattu) 6; Kollidam (dist Mayiladuthurai), Sirkali (dist Mayiladuthurai), Annamalai Nagar (dist Cuddalore) 4 Each; Dgp Office (dist Chennai), Chidambaram (dist Cuddalore), Tarangambadi (dist Mayiladuthurai), Karaikal (dist Karaikal), Theni Andipatti (dist Theni), Ennore AWS (dist Tiruvallur), Thirukalukundram (dist Chengalpattu), Gummidipoondi (dist Tiruvallur) 3 Each; Chennai(n) (dist Chennai), Parangipettai (dist Cuddalore), Sethiathope (dist Cuddalore), Cheyyur (dist Chengalpattu), Kelambakkam (dist Chengalpattu), Maduranthagam (dist Chengalpattu), Mayiladuthurai (dist Mayiladuthurai), Cholvaram (dist Tiruvallur), Ponneri (dist Tiruvallur), Vanur (dist Villupuram), Chidambaram AWS (dist Cuddalore), Puzhal ARG (dist Tiruvallur), Bhuvanagiri (dist Cuddalore), Thirupporur (dist Chengalpattu), Hindusthan University (dist Chengalpattu), Manalmedu (dist Mayiladuthurai), Ambathur (dist Chennai), Sholinganallur (dist Chennai), Perambur (dist Chennai), Mgr Nagar (dist Chennai), Chennai Collectorate Bu (dist Chennai), Cd Hospital Tondaipet (dist Chennai), Velankanni (dist Nagapattinam), Avadi (dist Tiruvallur), Sembanarkoil PWD (dist Mayiladuthurai) 2 Each; **Royalaseema:** Venkatagiri (dist Tirupati), Gudur (dist Tirupati), Thottambedu (dist Tirupati), Kodur (dist Ysr District) 4 Each; Srikalahasti (dist Tirupati), Sullurpeta (dist Tirupati) 3 Each; Rajampet (dist Annamayya District), Tirupati AP (dist Tirupati) 2 Each.

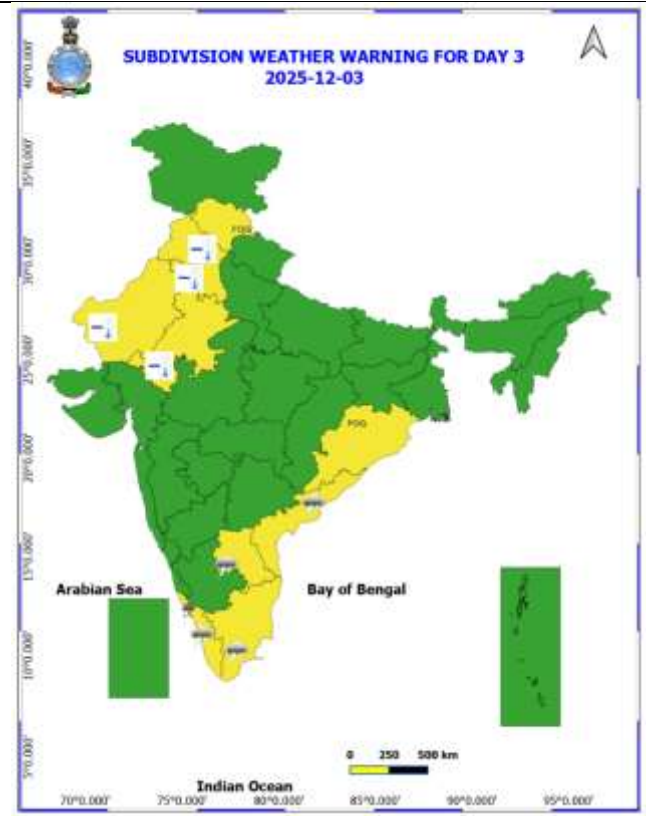
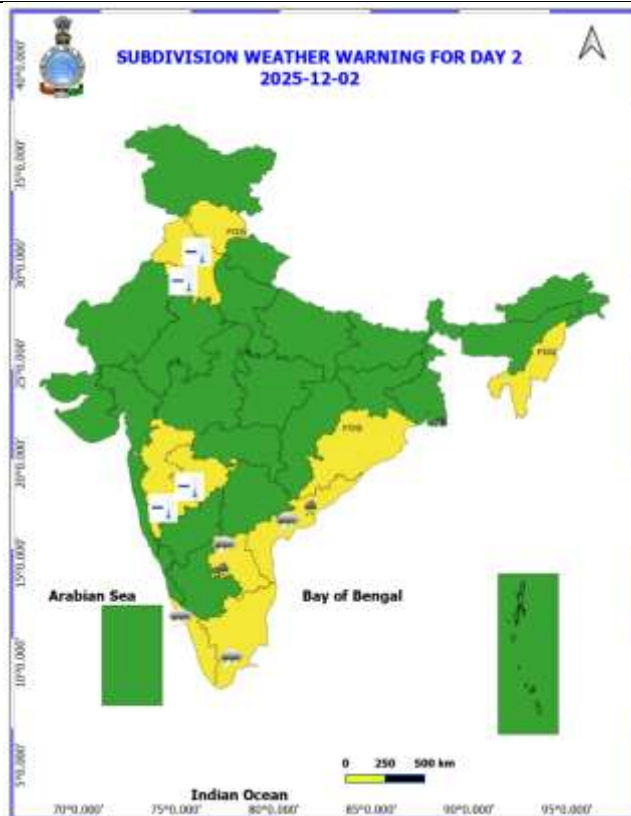
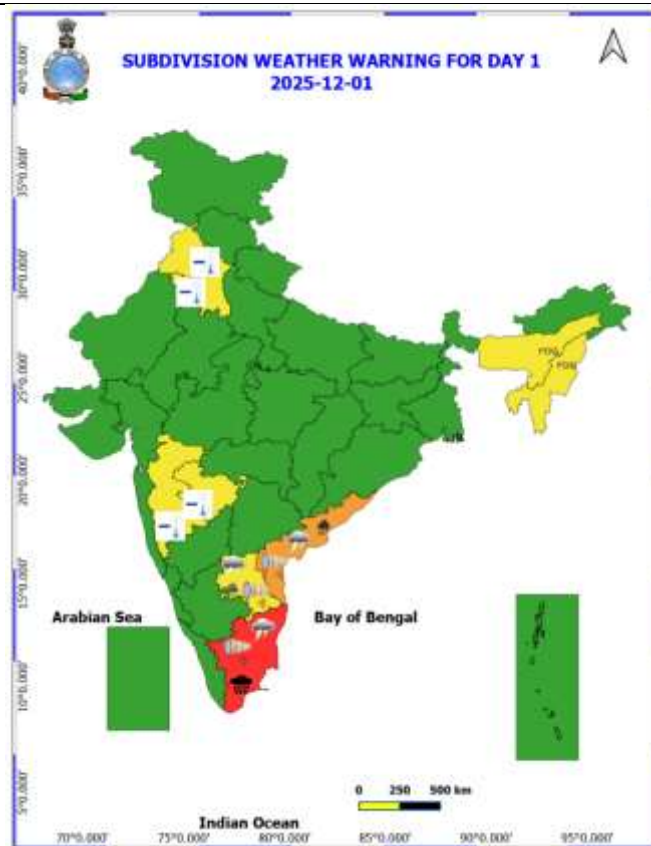
Visibility reported (≤ 200 m) (in meter):

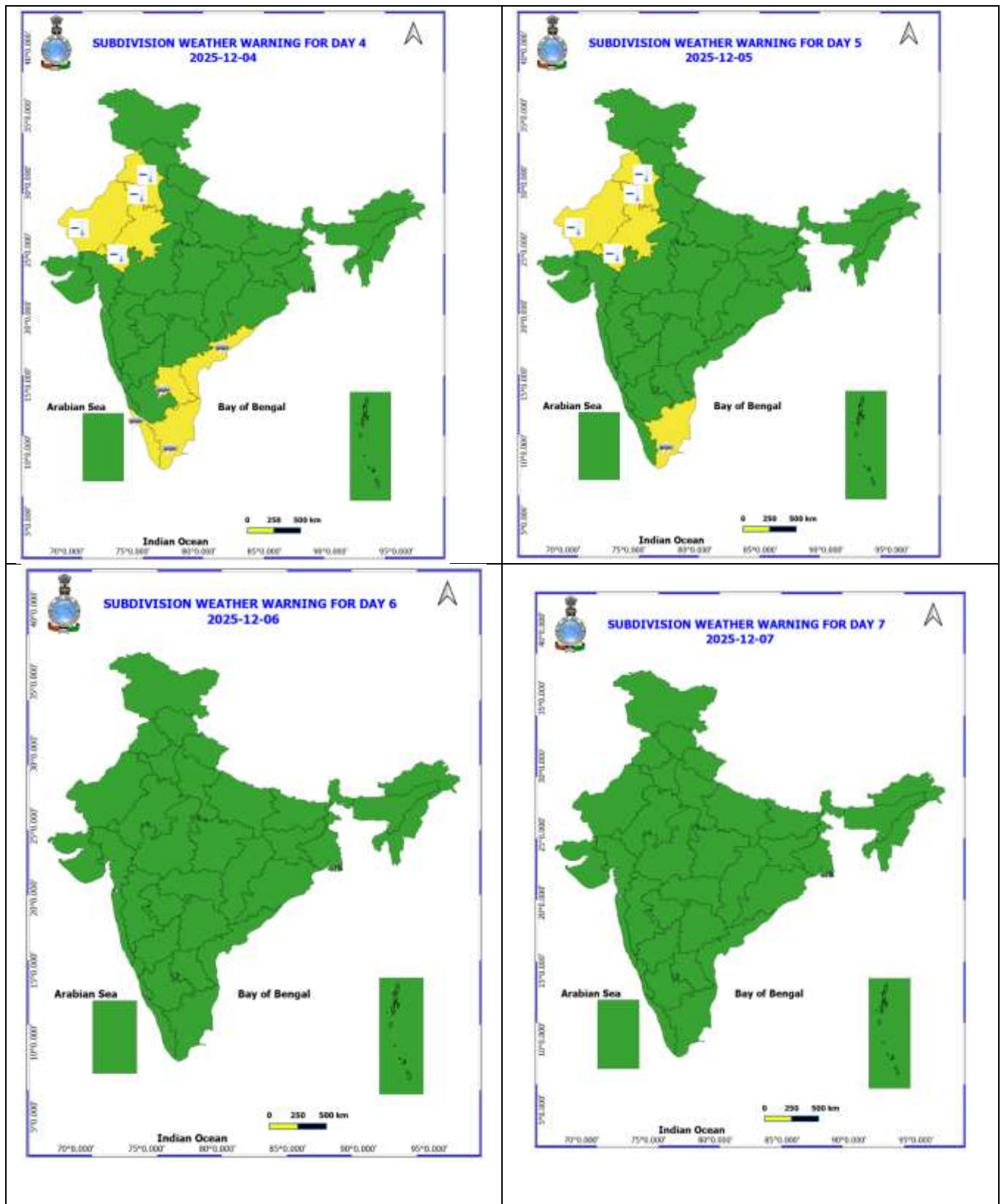
- ❖ **Assam & Meghalaya:** Barapani-50 m
- ❖ **Meghalaya:** Imphal-100 m

Table-1								
7 Days Rainfall Forecast								
S.No.	Subdivision	1- Dec	2- Dec	3- Dec	4- Dec	5- Dec	6- Dec	7- Dec
		Day 1	Day 2	Day 3	Day 4	Day 5	Day 6	Day 7
1	ANDAMAN & NICOBAR ISLANDS	ISOL	ISOL	ISOL	ISOL	SCT	SCT	SCT
2	ARUNACHAL PRADESH	ISOL	DRY	DRY	DRY	DRY	DRY	DRY
3	ASSAM & MEHGHALAYA	DRY	DRY	DRY	DRY	DRY	DRY	DRY
4	NAGALAND, MANIPUR, MIZORAM AND TRIPURA	DRY	DRY	DRY	DRY	DRY	DRY	DRY
5	SUB HIMALAYAN WEST BENGAL & SIKKIM	ISOL	ISOL	ISOL	DRY	DRY	DRY	DRY
6	GANGETIC WEST BENGAL	ISOL	DRY	DRY	DRY	DRY	DRY	DRY
7	ODISHA	ISOL	DRY	DRY	DRY	DRY	DRY	DRY
8	JHARKHAND	DRY	DRY	DRY	DRY	DRY	DRY	DRY
9	BIHAR	DRY	DRY	DRY	DRY	DRY	DRY	DRY
10	EAST UTTAR PRADESH	DRY	DRY	DRY	DRY	DRY	DRY	DRY
11	WEST UTTAR PRADESH	DRY	DRY	DRY	DRY	DRY	DRY	DRY
12	UTTARAKHAND	DRY	DRY	DRY	ISOL	ISOL	ISOL	ISOL
13	HARYANA, CHANDIGARH & DELHI	DRY	DRY	DRY	DRY	DRY	DRY	DRY
14	PUNJAB	DRY	DRY	DRY	DRY	DRY	DRY	DRY
15	HIMACHAL PRADESH	ISOL	DRY	DRY	ISOL	ISOL	DRY	DRY
16	JAMMU AND KASHMIR AND LADAKH	SCT	DRY	DRY	DRY	ISOL	DRY	DRY
17	WEST RAJASTHAN	DRY	DRY	DRY	DRY	DRY	DRY	DRY
18	EAST RAJASTHAN	DRY	DRY	DRY	DRY	DRY	DRY	DRY
19	WEST MADHYA PRADESH	DRY	DRY	DRY	DRY	DRY	DRY	DRY
20	EAST MADHYA PRADESH	DRY	DRY	DRY	DRY	DRY	DRY	DRY
21	GUJRAT REGION	DRY	DRY	DRY	DRY	DRY	DRY	DRY
22	SAURASHTRA & KUTCH	DRY	DRY	DRY	DRY	DRY	DRY	DRY
23	KONKAN & GOA	DRY	DRY	DRY	DRY	DRY	DRY	DRY
24	MADHYA MAHARASHTRA	DRY	DRY	DRY	DRY	DRY	DRY	DRY
25	MARATHWADA	DRY	DRY	DRY	DRY	DRY	DRY	DRY
26	VIDARBHA	DRY	DRY	DRY	DRY	DRY	DRY	DRY
27	CHHATTISGARH	ISOL	ISOL	DRY	DRY	DRY	DRY	DRY
28	COASTAL ANDHRA PRADESH	FWS	FWS	FWS	ISOL	ISOL	ISOL	ISOL
29	TELANGANA	SCT	ISOL	DRY	DRY	DRY	DRY	DRY
30	RAYALASEEMA	SCT	SCT	FWS	SCT	ISOL	ISOL	ISOL
31	TAMILNADU & PUDUCHERRY	SCT	ISOL	SCT	SCT	SCT	SCT	ISOL
32	COSTAL KARNATAKA	DRY	DRY	ISOL	ISOL	ISOL	DRY	DRY
33	NORTH INTERIOR KARNATAKA	DRY	DRY	DRY	DRY	DRY	DRY	DRY
34	SOUTH INTERIOR KARNATAKA	ISOL	ISOL	SCT	ISOL	DRY	DRY	DRY
35	KERALA AND MAHE	ISOL	SCT	FWS	FWS	FWS	SCT	SCT
36	LAKSHADWEEP	DRY	SCT	SCT	FWS	FWS	FWS	SCT

- As the lead period increases forecast accuracy decrease.

ANNEXURE II





- Action may be taken based on ORANGE AND REDCOLOUR warnings.
- Vulnerable regions likely urban and hilly areas action may be initiated for heavy rainfall warning.
- As the lead period increases forecast accuracy decreases.

Detailed districtwise MultiHazard weather warning for next five days available at
<https://mausam.imd.gov.in/responsive/districtWiseWarningGIS.php>

Weather forecast over Delhi/NCR during 01st December to 04th December 2025**Past Weather:**

There has been a fall in maximum temperatures upto 1-2°C and an appreciable fall in minimum temperatures upto 2-3°C during the past 24 hours over Delhi. The maximum and minimum temperatures over Delhi were around 22 to 25 °C and 05 to 08°C, respectively. The minimum temperatures are appreciably below normal (-3.1 to -5.0 °C) at many places and markedly below normal (-5.1 or less) at a few places over Delhi. The maximum temperatures were below normal (-1.6 to -3.0 °C) at many places and normal (-1.5 to 1.5°C) at a few places over Delhi. Mainly clear sky conditions with predominant surface wind from the west direction, with a wind speed up to 20 kmph, prevailed during the past 24 hours. Mainly clear sky conditions with wind from the west direction with a wind speed up to 06 kmph prevailed over the region in the forenoon today.

Weather Forecast:

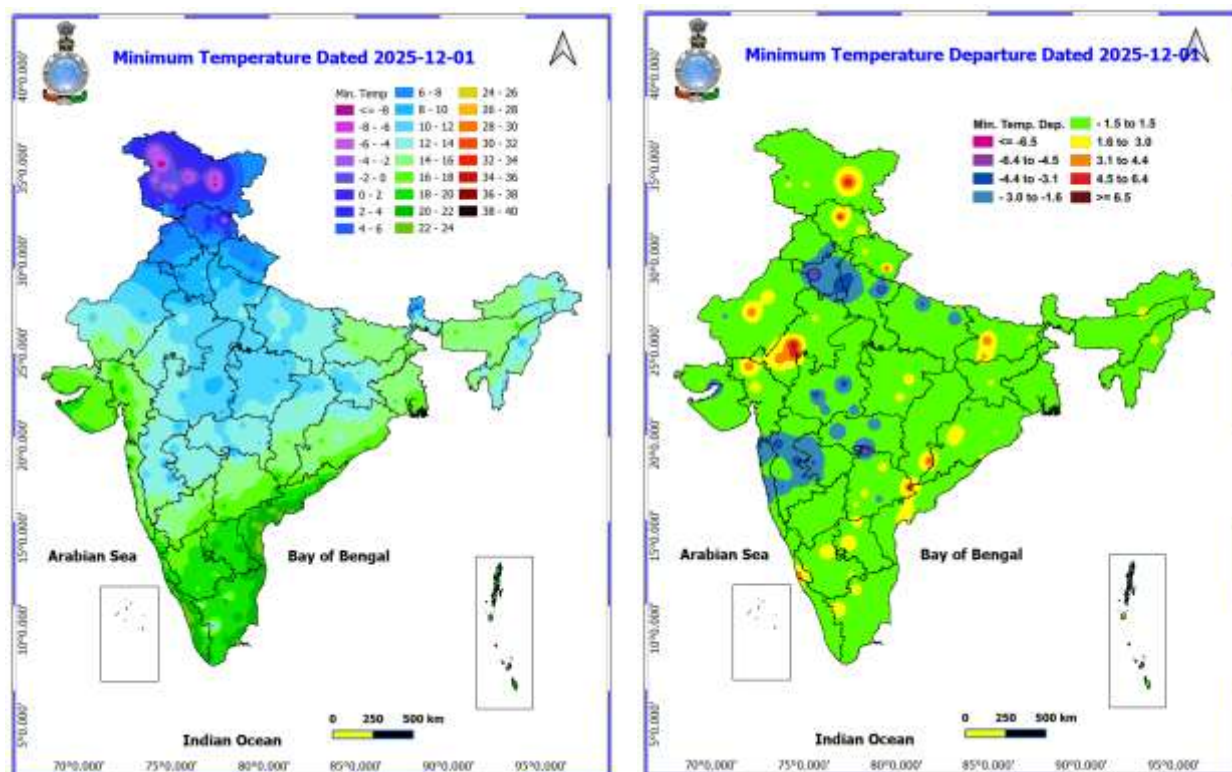
01.12.2025: Mainly clear sky. Mist/Haze during the night. The maximum temperatures are likely to be in the range of 23 to 25°C. The maximum temperatures will be below normal (-1.0 to -3.0 °C) over Delhi. The predominant surface wind is likely to be from the northwest direction, with wind speeds up to 10 kmph during the afternoon hours. The wind speed will decrease up to 05 kmph from the north direction during the evening and night.

02.12.2025: Mainly clear sky. Shallow fog during morning hours. The maximum and minimum temperatures over Delhi are likely to be in the range of 24 to 26°C and 08 to 10°C respectively. The minimum temperatures will be near normal, and the maximum temperatures will be near normal over Delhi. The predominant surface wind is likely to be from the northwest direction with calm wind gradually increasing to up to 05 kmph during morning hours. The wind speed will increase, becoming less than 10 kmph from the northwest direction in the afternoon. The wind speed will decrease, becoming less than 05 kmph from the north direction during the evening and night.

03.12.2025: Mainly clear sky. Shallow to moderate fog during morning hours. The maximum and minimum temperatures over Delhi are likely to be in the range of 22 to 24°C and 07 to 09°C respectively. The minimum temperatures will be below normal (-0.5 to -2.5 °C), and the maximum temperatures will be below normal (-1.3 to -3.3 °C) over Delhi. The predominant surface wind is likely to be from the north direction associated with calm wind gradually increasing up to 05 kmph during morning hours. The wind speed will increase up to 10 kmph from the northwest direction in the afternoon. The wind speed will be less than 08 kmph from the northwest direction during the evening and night.

04.12.2025: Mainly clear sky. Shallow to moderate fog during morning hours. The maximum and minimum temperatures over Delhi are likely to be in the ranges of 22 °C to 24 °C and 6 °C to 08 °C, respectively. The minimum temperatures will be below normal (-1.5 to -3.5 °C), and the maximum temperature will be below normal (-1.3 to -3.3 °C) over Delhi. The predominant surface wind is likely to be from the northwest direction, with wind speeds of up to 10 kmph during the morning hours. The wind speed will increase up to 12 kmph from the northwest direction in the afternoon. The predominant surface wind is likely to be from the west direction with wind speed up to 05 kmph during the evening and night.

ANNEXURE IV



Impact & Action Suggested due to

- ❖ **Isolated extremely heavy rainfall** likely over north coastal Tamil Nadu, Puducherry and **isolated heavy to very heavy rainfall** likely over Coastal Andhra Pradesh & Yanam on 01st December.

Impact Expected

- Localized Flooding of roads, water logging in low lying areas and closure of underpasses mainly in urban areas of the above region.
- Occasional reduction in visibility due to heavy rainfall.
- Disruption of traffic in major cities due to water logging in roads leading to increased travel time.
- Minor damage to kutcha roads.
- Possibilities of damage to vulnerable structure.
- Localized Landslides/Mudslides/landslips/mudslips/landsinks/mudsinks.
- Damage to horticulture and standing crops in some areas due to inundation.
- It may lead to riverine flooding in some river catchments (for riverine flooding please visit Web page of CWC)

Action Suggested

- Check for traffic congestion on your route before leaving for your destination.
- Follow any traffic advisories that are issued in this regard.
- Avoid going to areas that face the water logging problems often.
- Avoid staying in vulnerable structure.

Agromet advisories for likely impact of Heavy / Heavy to Very Heavy Rainfall

- In **Tamil Nadu**, drain out excess rain water from the fields of rice, groundnut, sugarcane, cotton, black gram, maize and vegetables and plantations of coconut, banana, areca nut, mango, rubber, cinnamon and black pepper. Strengthen irrigation channels and field bunds in rice to avoid crop lodging. Provide support to banana plants with wooden poles to prevent them from falling.
- In **Andhra Pradesh**, provide extensive drainage in *rabi* rice nurseries, transplanted rice, Bengal gram, red gram, maize, jowar, already sown crops of ragi, chickpea, black gram, vegetables and orchards. Keep the harvested produce of rice, maize, groundnut and cotton to safer places. Postpone picking of cotton, harvesting of rice and sowing of ragi, chickpea & black gram.
- In **Kerala**, make necessary arrangements to drain out excess rain water from the fields of rice, vegetables and plantations of banana, coconut, cardamom and black pepper. Carry out propping in banana to prevent their falling due to heavy rainfall. Undertake staking for vegetables grown in pandals.

Livestock / Fishery

- Keep the animals inside the shed during heavy rainfall and provide them balanced feed.
- Store feed and fodder in a safe place to prevent spoilage.
- Construct an outlet with proper netting around the ponds to drain out excess water, thereby preventing fish from escaping in case of overflow.

Agromet advisories for likely impact of Thunderstorm / Gusty Winds

- Provide mechanical support to horticultural crops and staking or support to vegetables and young fruit plants / fruit-bearing plants to avoid lodging due to strong winds.

Legends & abbreviations:

- ❖ **Heavy Rain:** 64.5-115.5mm; **Very Heavy Rain:** 115.6-204.4mm; **Extremely Heavy Rain:** >204.4mm.
- ❖ **Obsy:** Observatory; **Automatic Weather Station;** **ARG:** Automatic Rain Gauge; **dist:** District; **NH:** National Highway; **KVK:** Krishi Vigyan Kendra; **DVC:** Damodar Valley Corporation; **PTO:** Part Time Office, **Aero:** Aerodrome, **IAF:** Indian Air Force.
- ❖ **Region wise classification of meteorological Sub-Divisions:**
 - **Northwest India:** Western Himalayan Region (Jammu-Kashmir-Ladakh-Gilgit-Baltistan-Muzaffarabad, Himachal Pradesh and Uttarakhand); Punjab, Haryana-Chandigarh-Delhi; West Uttar Pradesh, East Uttar Pradesh, West Rajasthan and East Rajasthan.
 - **Central India:** West Madhya Pradesh, East Madhya Pradesh, Vidarbha and Chhattisgarh.
 - **East India:** Bihar, Jharkhand, Sub-Himalayan West Bengal & Sikkim; Gangetic West Bengal, Odisha and Andaman & Nicobar Islands.
 - **Northeast India:** Arunachal Pradesh, Assam & Meghalaya and Nagaland, Manipur, Mizoram & Tripura.
 - **West India:** Gujarat Region, Saurashtra & Kutch, Konkan & Goa, Madhya Maharashtra and Marathawada.
 - **South India:** Coastal Andhra Pradesh & Yanam, Telangana, Rayalaseema, Coastal Karnataka, North Interior Karnataka, South Interior Karnataka, Kerala & Mahe, Tamil Nadu, Puducherry & Karaikal and Lakshadweep.

LEGENDS

1. अंडमान और निकोबार द्वीपसमूह

2. अरुणाचल प्रदेश

3. असम और मेघालय

4. नागालैंड, मणिपुर, मिजोरम और त्रिपुरा

5. उप-हिमालयी पश्चिम बंगाल और सिक्किम

6. गंगीय पश्चिम बंगाल

7. ओडिशा

8. झारखंड

9. बिहार

10. पूर्वी उत्तर प्रदेश

11. पश्चिम उत्तर प्रदेश

12. उत्तराखंड

13. हरियाणा, चंडीगढ़ और दिल्ली

14. पंजाब

15. हिमाचल प्रदेश

16. जम्मू और कश्मीर और लद्दाख

17. पश्चिम राजस्थान

18. पूर्वी राजस्थान

19. पश्चिम मध्य प्रदेश

20. पूर्वी मध्य प्रदेश

21. गुजरात

22. सौराष्ट्र

23. कोंकण और गोवा

24. मध्य महाराष्ट्र

25. मराठवाड़ा

26. विदर्भ

27. छत्तीसगढ़

28. तटीय आंध्र प्रदेश और यनम

29. तेलंगाना

30. रायलसीमा

31. तमिलनाडु, पुडुचेरी और कराईकल

32. तटीय कर्नाटक

33. आंतरिक उत्तरी कर्नाटक

34. आंतरिक दक्षिणी कर्नाटक

35. केरल और माहे

36. लक्षद्वीप



1. Andaman & Nicobar Islands

2. Arunachal Pradesh

3. Assam & Meghalaya

4. Nagaland, Manipur, Mizoram & Tripura

5. Sub-Himalayan West Bengal & Sikkim

6. Gangetic West Bengal

7. Odisha

8. Jharkhand

9. Bihar

10. East Uttar Pradesh

11. West Uttar Pradesh

12. Uttarakhand

13. Haryana, Chandigarh & Delhi

14. Punjab

15. Himachal Pradesh

16. Jammu & Kashmir and Ladakh

17. West Rajasthan

18. East Rajasthan

19. West Madhya Pradesh

20. East Madhya Pradesh

21. Gujarat

22. Saurashtra

23. Konkan & Goa

24. Madhya Maharashtra

25. Marathwada

26. Vidarbha

27. Chhattisgarh

28. Coastal Andhra Pradesh & Yanam

29. Telangana

30. Rayalaseema

31. Tamilnadu, Puducherry & Karaikal

32. Coastal Karnataka

33. North Interior Karnataka

34. South Interior Karnataka

35. Kerala & Mahe

36. Lakshadweep

SPATIAL DISTRIBUTION (% of Stations reporting)

% Stations	Category	% Stations	Category
76-100	Widespread (WS/Most Places)	26-50	Scattered (SCT/A Few Places)
51-75	Fairly Widespread (FWS/Many Places)	1-25	Isolated (ISOL)



Fog



Heavy Snow



Cold Wave



Heavy Rain



Dust Storm



Cold Day



Very Heavy Rain



Heat Wave



Ground Frost



Extremely Heavy Rain



Warm Night



Thunder & Lightning



Hot Day



Hailstorm



Hot & Humid



Dust Raising Winds



Strong Surface Winds

COLOUR CODED WARNING

No Warning (No Action)

Watch (Be Aware)

Alert (Be Prepared To Take Action)

Warning (Take Action)

Probabilistic Forecast

Terms	Probability of Occurrence (%)
Unlikely	< 25
Likely	25 - 50
Very Likely	50 - 75
Most Likely	> 75

* Red colour warning does not mean "Red Alert", Red colour warning means "Take Action".

Forecast and Warning for any day is valid from 0830 hours IST of day till 0830 hours IST of next day.

For more details, kindly visit <https://mausam.imd.gov.in> or contact: 011-2434-4599

(Service to the Nation since 1875)

DEFINITION/CRITERIA

Rain/ Snow *

Heavy: 64.5 to 115.5 mm/cm *
Very Heavy: 115.6 to 204.4 mm/cm *
Extremely Heavy: > 204.4 mm/cm *

Heat Wave

When maximum temperature of a station reaches $\geq 40^{\circ}\text{C}$ for plains and $\geq 30^{\circ}\text{C}$ for hilly regions
(a) Based on Departure from normal

Heat Wave: Maximum Temperature Departure from normal 4.5°C to 6.4°C .

Severe Heat Wave: Maximum Temperature Departure from normal $\geq 6.5^{\circ}\text{C}$

(b). Based on Actual maximum temperature

Heat Wave: When actual maximum temperature $\geq 45^{\circ}\text{C}$.

Severe Heat Wave: When actual maximum temperature $\geq 47^{\circ}\text{C}$.

(c). Criteria for heat wave for coastal stations

When maximum temperature departure is $> 4.5^{\circ}\text{C}$ from normal. Heat Wave may be described provided maximum temperature $\geq 37^{\circ}\text{C}$.

Warm Night

When maximum temperature remains 40°C

Warm Night: When minimum temperature departure 4.5°C to 6.4°C .

Severe Warm Night: When minimum temperature departure $> 6.4^{\circ}\text{C}$.

Cold Wave

When minimum temperature of a station $\leq 10^{\circ}\text{C}$ for plains and $\leq 0^{\circ}\text{C}$ for hilly regions.

(a). Based on departure

Cold Wave: Minimum Temperature Departure from normal -4.5°C to -6.4°C .

Severe Cold Wave: Minimum Temperature Departure from normal $\leq -6.5^{\circ}\text{C}$

(b) Based on actual Minimum Temperature (for Plains only)

Cold Wave: When Minimum Temperature is $\leq 4.0^{\circ}\text{C}$

Severe Cold Wave: When Minimum Temperature is $\leq 2.0^{\circ}\text{C}$

(c) For Coastal Stations

When Minimum Temperature departure is $\leq -4.5^{\circ}\text{C}$ & actual Minimum Temperature is $\leq 15^{\circ}\text{C}$

Cold Day

When minimum temperature of a station $\leq 10^{\circ}\text{C}$ for plains and $\leq 0^{\circ}\text{C}$ for hilly regions

Based on departure

Cold Day: Maximum Temperature Departure from normal -4.5°C to -6.4°C .

Severe Cold Day: Maximum Temperature Departure from normal $\leq -6.5^{\circ}\text{C}$

Fog

Phenomenon of small droplets suspended in air and the horizontal visibility $< 1\text{km}$

Moderate Fog: When the visibility between 500-200 metres

Dense Fog: when the visibility between 50- 200 metres

Very Dense Fog: when the visibility < 50 metres

Thunderstorm

Sudden electrical discharges manifested by a flash of light (Lightning) and a sharp rumbling sound (thunder)

Dust/Sand Storm

An ensemble of particles of dust or sand energetically lifted to great heights by a strong and turbulent wind.

Frost

Ice deposits on ground

Air temperature $\leq 4^{\circ}\text{C}$ (over Plains)

Squall

A strong wind that rises suddenly, lasts for atleast 1 minute.

Moderate: Wind speed 52-61 kmph

Severe: Wind speed 62-67 kmph

Very Severe: Wind speed > 67 kmph

Sea State

Effect of various waves in the sea over specific area

Rough to very rough: Wind speed 41-62 kmph (22-33 knots) & Wave height 2.5-6 metre

High to very high: Wind speed 63-117 kmph (34-63 knots) & Wave height 6-14 metre

Phenomenal: Wind speed > 117 kmph (> 63 knots) & Wave height > 14 metre

Cyclone

Cyclonic Storm: Wind speed 62-87 kmph (34-47 knots)

Severe Cyclonic Storm: Wind speed 88-117 kmph (48-63 knots)

Very Severe Cyclonic Storm: Wind speed 118-165 kmph (64 - 89 knots)

Extremely Severe Cyclonic Storm: Wind speed 166-220 kmph (90 -119 knots)

Super Cyclone Storm: Wind speed > 220 kmph (> 119 knots)

* Red colour warning does not mean "Red Alert", Red colour warning means "Take Action".

Forecast and Warning for any day is valid from 0830 hours IST of day till 0830 hours IST of next day.

For more details, kindly visit <https://mausam.imd.gov.in> or contact: 011-2434-4599

(Service to the Nation since 1875)