



Government of India
Ministry of Earth Sciences



India Meteorological Department

PRESS RELEASE-4

Time of issue: 1630 hours IST

Dated: 30th Nov, 2025

Subject: Deep Depression (Remnant of Cyclonic Storm Ditwah) over westcentral and adjoining southwest Bay of Bengal and North Tamil Nadu-Puducherry & South Andhra Pradesh coasts

Yesterday's **Cyclonic Storm Ditwah [Pronunciation: Ditwah]** over southwest Bay of Bengal and adjoining north Sri Lanka moved northwards and weakened into a Deep Depression in the same evening (1730 hrs IST) of 30th Nov. over southwest Bay of Bengal and adjoining Tamil Nadu-Puducherry coasts. Continuing to move further northwards, it lay centered at 1130 hrs IST of today, the 01st December 2025 over westcentral and adjoining southwest Bay of Bengal and North Tamil Nadu-Puducherry & South Andhra Pradesh coasts, near latitude 13.0°N and longitude 80.6°E, about 50 km east of Chennai (India), 140 km northeast of Puducherry (India), 160 km north-northeast of Cuddalore (India), 170 km south-southeast of Nellore (India). The minimum distance of the centre of the deep depression from north Tamil Nadu-Puducherry coasts is about 35 km.

It is very likely to move slowly northwards parallel to North Tamil Nadu and south Andhra Pradesh coasts and maintain the intensity of deep depression till evening. Thereafter continuing to move slowly northwards, it is very likely to weaken into a depression during subsequent 12 hours.

The system will be centered over westcentral & adjoining southwest Bay of Bengal within a minimum distance of 30 km from the Chennai coast by evening of today, the 01st December.

The system is being monitored by the Doppler Weather Radars (DWR) at Chennai and Sriharikota.

Forecast track and intensity are given in Table below

Date/Time (IST)	Position (Lat. °N/ Long. °E)	Maximum Sustained Surface Wind Speed (Kmph)	Category Of Cyclonic Disturbance
01.12.25/1130	13.0/80.6	50-60 gusting to 70	Deep Depression
01.12.25/1730	13.2/80.6	50-60 gusting to 70	Deep Depression
01.12.25/2330	13.4/80.6	45-55 gusting to 65	Depression

(i) Rainfall Warning:

- ❖ **North coastal Tamil Nadu & Puducherry:** Light to moderate rainfall at most places with **heavy to extremely heavy rainfall at isolated places** likely on 1st December, 2025 and heavy rainfall at isolated places likely on 2nd December.
- ❖ **South Coastal Andhra Pradesh & Rayalaseema:** Light to moderate rainfall at most places with **heavy to very heavy rainfall** at isolated places on 01st December and heavy rainfall at isolated places likely on 2nd December.
- ❖ **North Coastal Andhra Pradesh:** Light to moderate rainfall at most places with **heavy rainfall** at isolated places on 01st December.

- ❖ **Odisha:** Light to moderate rainfall at many places with **heavy rainfall** at isolated places on 01st December.

(ii) Wind Warning:

(a) Southwest and adjoining westcentral Bay of Bengal and along & off north Tamil Nadu, Puducherry and South Andhra Pradesh Coasts

Squally wind speed reaching 50-60 gusting to 70 kmph is prevailing and it is likely to decrease gradually becoming 45-55 gusting to 65 kmph by 1st December night and 40-50 gusting to 60 kmph by 2nd December morning.

(b) Along & off south Tamil Nadu coast, Gulf of Mannar, Comorin area and along & off north Sri Lanka coast

Squally wind speed reaching 45-55 gusting to 65 kmph is prevailing and it is likely to decrease gradually becoming 40-50 gusting to 60 kmph by 2nd December morning.

(ii) Sea Condition:

(a) Southwest and adjoining westcentral Bay of Bengal and along & off north Tamil Nadu, Puducherry and South Andhra Pradesh Coasts:

Very rough to rough sea conditions are likely to prevail on 01st December, becoming rough by 2nd December morning and to gradually improve thereafter.

(b) Along & off south Tamil Nadu coast, Gulf of Mannar, Comorin area and along & off north Sri Lanka coast

Very rough to rough sea conditions are likely to prevail on 01st December. It would improve becoming rough on 2nd December and gradually improve thereafter.

(iii) Fishermen Warning:

(a) Total suspension of fishing operations over southwest and adjoining westcentral Bay of Bengal and along & off Tamil Nadu, Puducherry and south coastal Andhra Pradesh & north Sri Lanka, Gulf of Mannar, Comorin area till 2nd December morning.

(b) Those out at sea should avoid southwest and adjoining westcentral Bay of Bengal and along & off Tamil Nadu, Puducherry and south coastal Andhra Pradesh & north Sri Lanka, Gulf of Mannar, Comorin area till 2nd December morning.

(v) Impact Expected and Action Suggested due to heavy rain and strong winds (coastal districts of north Tamil Nadu, Puducherry and south Andhra Pradesh) on 1st December, 2025

Impact Expected

- ❖ Breaking of tree branches, uprooting of small trees. Damage to orchards, banana and papaya trees.
- ❖ Damage to paddy crops, horticultural and standing crops due to inundation, winds and sea spray.
- ❖ Damage to Kutcha roads and culverts.
- ❖ Inundation/ water logging in low-lying areas in coastal districts due to heavy rainfall and flash flood. Flooding of escape routes and damage to salt pans.
- ❖ Riverine flooding in some river catchments. Please refer advisories by Central Water Commission in this regard.
- ❖ Occasional reduction in visibility due to heavy rainfall.
- ❖ Disruption of traffic due to water logging.
- ❖ Localized Landslides/Mudslides.

Action suggested:

- ❖ Total suspension of fishing operations.
- ❖ People in affected areas to remain indoors.
- ❖ Take safe shelters; do not take shelter under trees, as there could be lightning.
- ❖ Movement in motor boats unsafe.
- ❖ Judicious regulation of offshore/onshore operations
- ❖ People are advised to keep a watch on the weather for worsening conditions and be ready to move to safer places accordingly.
- ❖ Tourism and recreational activities to be regulated.
- ❖ Surface transport and helicopter services to be regulated.

(vi) Realised rainfall:

Coastal Andhra Pradesh & Yanam reported light to moderate rainfall at many places with heavy to very heavy rainfall at isolated places. Tamil Nadu, Puducherry & Karaikal and Rayalaseema reported light to moderate rainfall at most places. Details are given in Annexure-1

Kindly visit www.rsmcnewdelhi.imd.gov.in and www.mausam.imd.gov.in for updates on the system.

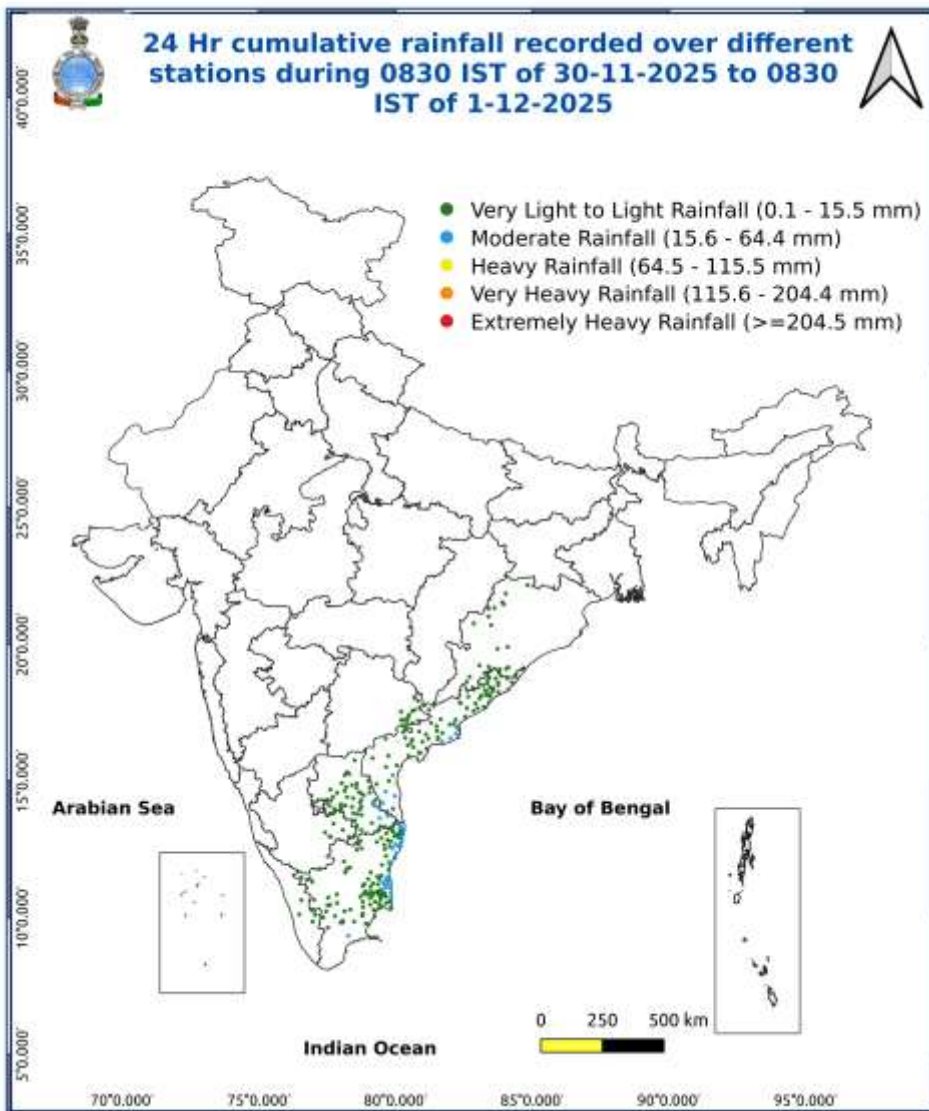
Next Press Release will be issued at 1430 hrs IST of tomorrow, the 2nd December, 2025.

24 hours accumulated rainfall (cm) recorded at 0830 hours IST of 1st December, 2025 over different stations (districts) are given below:

Coastal Andhra Pradesh & Yanam: Kavali (dist Spsr Nellore) 11; Atmakur (dist Spsr Nellore) 5; Rapur (dist Spsr Nellore), Nellore (dist Spsr Nellore) 4 Each; Kandukur (dist Spsr Nellore), Kakinada (dist Kakinada) 3 Each; Narsapuram (dist West Godavari), Amalapuram (dist B R Ambedkar Konaseema), Yanam (dist Yanam) 2 Each; Peddapuram (dist Kakinada), Koyyalagudem (dist Eluru), Yelamanchili (dist Anakapalli), Nellimarla (dist Vizianagaram), Srungavarapukota (dist Vizianagaram), Chodavaram (dist Anakapalli), Kalingapatnam (dist Srikakulam), Araku Valley (dist Alluri Sitharamaraju), Balajipeta (dist Parvathipuram Manyam), Denkada (dist Vizianagaram), Vepada (dist Vizianagaram), Ranastalam (dist Srikakulam), Narsipatnam (dist Anakapalli), Cheepurupalle (dist Vizianagaram), Gantyada (dist Vizianagaram), Anakapalle (dist Anakapalli), Paderu (dist Alluri Sitharamaraju), Bondapalle (dist Vizianagaram), Visakhapatnam (dist Vishakhapatnam), Tuni (dist Kakinada), Merakamudidam (dist Vizianagaram), Tanuku (dist West Godavari), Bheemunipatnam (dist Vishakhapatnam), Vizianagaram (dist Vizianagaram), Udayagiri (dist Spsr Nellore), Palakonda (dist Parvathipuram Manyam), Vinjamur (dist Spsr Nellore), Garividi (dist Vizianagaram) 1 Each;

Tamil Nadu, Puducherry & Karaikal: Mahabalipuram (dist Chengalpattu) 6; Kollidam (dist Mayiladuthurai), Sirkali (dist Mayiladuthurai), Annamalai Nagar (dist Cuddalore) 4 Each; Dgp Office (dist Chennai), Chidambaram (dist Cuddalore), Tarangambadi (dist Mayiladuthurai), Karaikal (dist Karaikal), Theni Andipatti (dist Theni), Ennore AWS (dist Tiruvallur), Thirukalukundram (dist Chengalpattu), Gummidipoondi (dist Tiruvallur) 3 Each; Chennai(n) (dist Chennai), Parangipettai (dist Cuddalore), Sethiathope (dist Cuddalore), Cheyyur (dist Chengalpattu), Kelambakkam (dist Chengalpattu), Maduranthagam (dist Chengalpattu), Mayiladuthurai (dist Mayiladuthurai), Cholvaram (dist Tiruvallur), Ponneri (dist Tiruvallur), Vanur (dist Villupuram), Chidambaram AWS (dist Cuddalore), Puzhal ARG (dist Tiruvallur), Bhuvanagiri (dist Cuddalore), Thirupporur (dist Chengalpattu), Hindusthan University (dist Chengalpattu), Manalmedu (dist Mayiladuthurai), Ambathur (dist Chennai), Sholinganallur (dist Chennai), Perambur (dist Chennai), Mgr Nagar (dist Chennai), Chennai Collectorate Bu (dist Chennai), Cd Hospital Tondaipe (dist Chennai), Velankanni (dist Nagapattinam), Avadi (dist Tiruvallur), Sembanarkoil PWD (dist Mayiladuthurai) 2 Each; Mayiladuthurai AWS (dist Mayiladuthurai), Mahabalipuram AWS (dist Chengalpattu), Anna University (dist Chennai), Cuddalore (dist Cuddalore), K.m.koil (dist Cuddalore), Kodaikanal (dist Dindigul), Palani (dist Dindigul), Chengalpattu (dist Chengalpattu), Chennai AP (dist Chennai), Tambaram (dist Chengalpattu), Uthiramerur (dist Kancheepuram), Nagapattinam (dist Nagapattinam), Vedaranyam (dist Nagapattinam), Naduvattam (dist Nilgiris), Puducherry (dist Puducherry), Pamban (dist Ramanathapuram), Yercaud (dist Salem), Karaikudi (dist Sivaganga), Thanjavur (dist Thanjavur), Red Hills (dist Tiruvallur), Thiruthuraiipoondi (dist Tiruvarur), Tiruvarur (dist Tiruvarur), Tirupattur (dist Tirupattur), Tindivanam (dist Villupuram), Vilupuram (dist Villupuram), Panruti (dist Cuddalore), Thamaraiyakkam (dist Tiruvallur), Kolapakkam ARG (dist Chengalpattu), Poonamalle ARG (dist Tiruvallur), Chembarambakkam ARG (dist Kancheepuram), Jaya Engg College AWS (dist Tiruvallur), Newchennai Township AWS (dist Chengalpattu), Tiruvarur AWS (dist Tiruvarur), Thalaigaiy (dist Nagapattinam), Mandapam (dist Ramanathapuram), Ayyampettai (dist Thanjavur), Uthukottai (dist Tiruvallur), Alandur (dist Chennai), Ayanavaram Taluk Office (dist Chennai), Cincona (dist Coimbatore), Collectorate (dist Cuddalore), Lalpet (dist Cuddalore), Kothavacherry (dist Cuddalore), Vadakuthu (dist Cuddalore), Src Kudithangi (dist Cuddalore), Vanamadevi (dist Cuddalore), Kodaikannal Boat Club (dist Dindigul), Thirukuvalai (dist Nagapattinam), Kodiayakarai (dist Nagapattinam), Tnau Cri Yethapur (dist Salem), Alakarai Estate (dist Nilgiris), Geddai (dist Nilgiris), Kinnakorai (dist Nilgiris), Rscl-2 Koliyanur (dist Villupuram), Rscl-2 Valavanur (dist Villupuram), Elumalai (dist Madurai), Uppar Dam (dist Tiruppur) 1 Each;

Rayalaseema: Venkatagiri (dist Tirupati), Gudur (dist Tirupati), Thottambedu (dist Tirupati), Kodur (dist Ysr District) 4 Each; Srikalahasti (dist Tirupati), Sullurpeta (dist Tirupati) 3 Each; Rajampet (dist Annamayya District), Tirupati AP (dist Tirupati) 2 Each; Kadiri (dist Sri Sathyasai District), Royachoti (dist Annamayya District), Kalakada (dist Annamayya District), Lakkireddipalle (dist Annamayya District), Arogyavaram (dist Annamayya District), Satyavedu (dist Tirupati), Tada (dist Tirupati), Gurramkonda (dist Annamayya District), Chinnamandem (dist Annamayya District), Penagaluru (dist Annamayya District), Pullampeta (dist Annamayya District), Raju Palem (dist Ysr District), Sambepalle (dist Annamayya District) 1 Each.

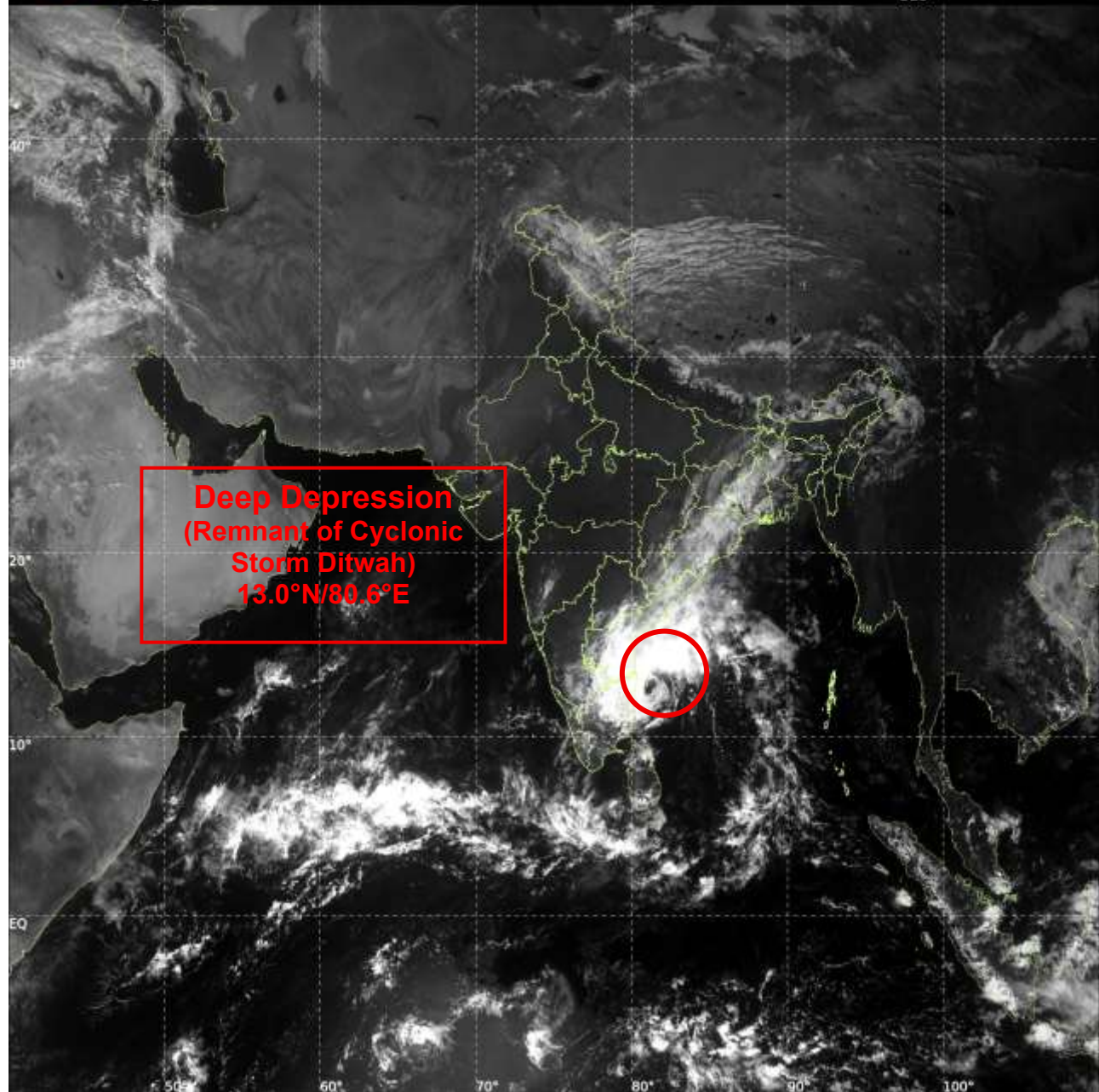




INSAT-3DS IMG, Visible Count @ 0.65 μm
GMT:01-12-2025/(0800-0827) IST:01-12-2025/(1330-1357)
LIC MERCATOR (LINEAR STRETCH: 0.5%)

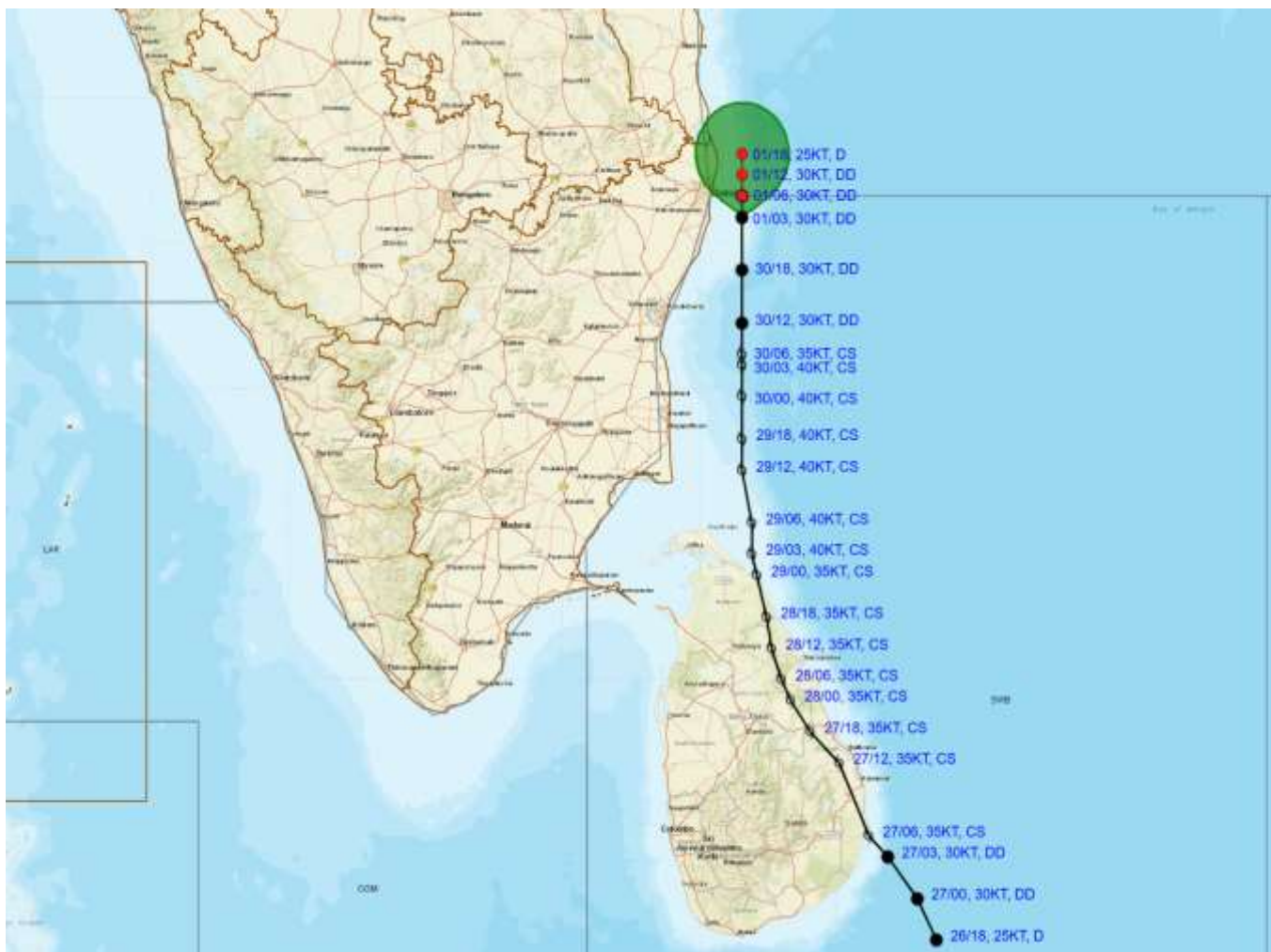
61

318





OBSERVED AND FORECAST TRACK OF DEEP DEPRESSION (REMNANT OF CYCLONIC STORM “DITWAH”) OVER WESTCENTRAL AND ADJOINING SOUTHWEST BAY OF BENGAL, NORTH TAMILNADU-PUDUCHERRY & SOUTH ANDHRA PRADESH COASTS BASED ON 0600 UTC (1130 Hrs. IST) OF 1ST DECEMBER 2025



DATE/TIME IN UTC

IST=UTC + 0530

L: LOW PRESSURE AREA

WML: WELL MARKED LOW PRESSURE AREA

D: DEPRESSION (17-27 KT)

DD: DEEP DEPRESSION (28-33 KT)

CS: CYCLONIC STORM (34-47 KT)

SCS: SEVERE CYCLONIC STORM (48-63KT)

VSCS: VERY SEVERE CYCLONIC STORM (64-89 KT)

ESCS: EXTREMELY SEVERE CYCLONIC STORM (90-119 KT)

SuCS: SUPER CYCLONIC STORM (≥ 120 KT)

LESS THAN 34 KT

34-47 KT

≥ 48 KT

OBSERVED TRACK

FORECAST TRACK

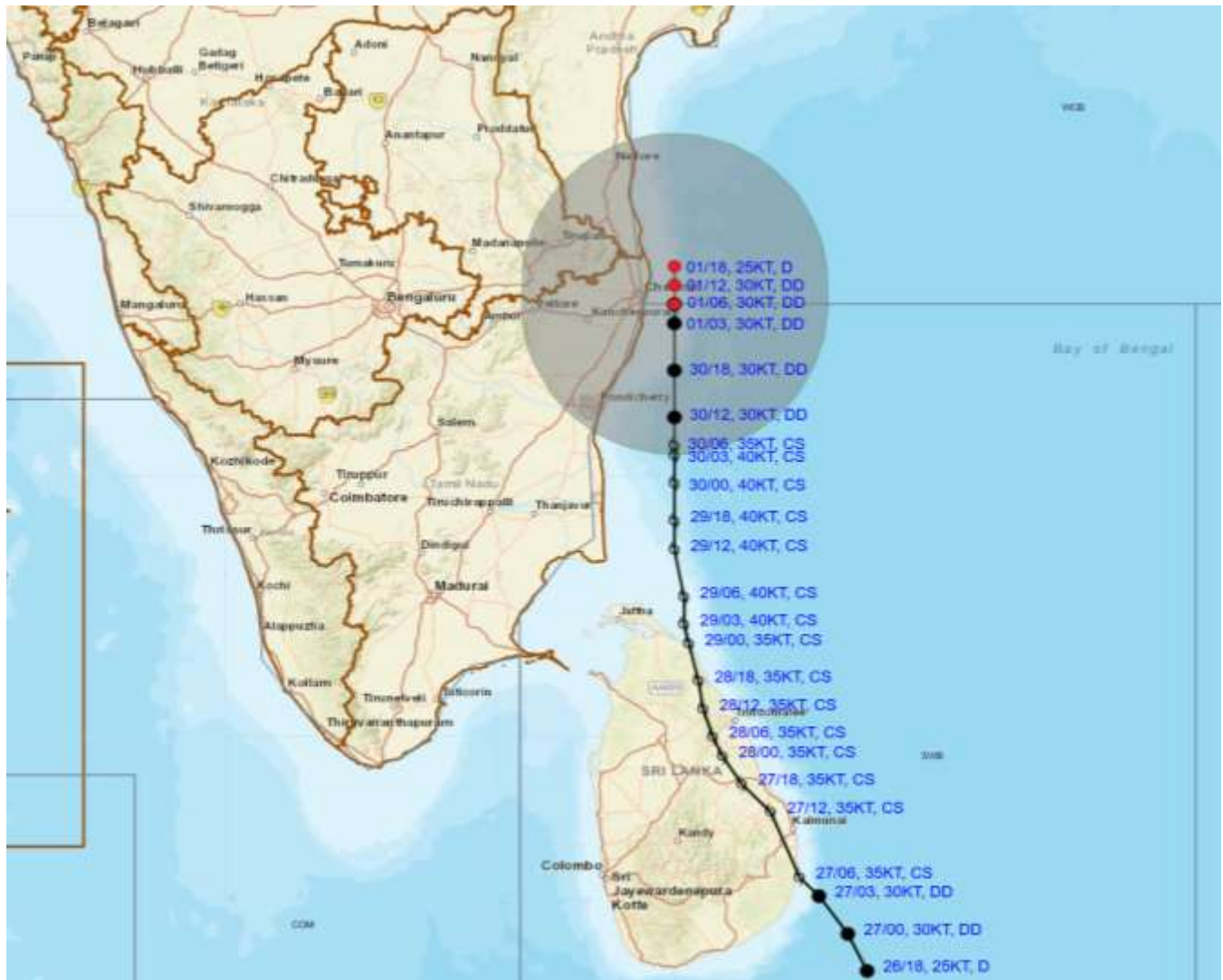
CONE OF UNCERTAINTY

Forecast distance (km) and direction of the centre from nearest 5 coastal stations

Forecast Date and Time	Station 1	Station 2	Station 3	Station 4	Station 5
01.12.25/0600	NUMGAMBAKKAM (44,E)	CHENNAI/MINAMBAKKA M (45,E)	TIRUTTANI (117,E)	TIRUPATHI (133,SE)	MO PONDICHERRY (143,NE)
01.12.25/1200	NUMGAMBAKKAM (46,ENE)	CHENNAI/MINAMBAKKA M (50,ENE)	TIRUTTANI (116,E)	TIRUPATHI (122,ESE)	NELLORE (154,SSE)
01.12.25/1800	NUMGAMBAKKAM (57,NE)	CHENNAI/MINAMBAKKA M (63,NE)	TIRUPATHI (114,ESE)	TIRUTTANI (119,ENE)	NELLORE (135,SSE)



OBSERVED AND FORECAST TRACK ALONGWITH QUADRANT WIND DISTRIBUTION OF DEEP DEPRESSION (REMNANT OF CYCLONIC STORM "DITWAH") OVER WESTCENTRAL AND ADJOINING SOUTHWEST BAY OF BENGAL, NORTH TAMILNADU-PUDUCHERRY & SOUTH ANDHRA PRADESH COASTS BASED ON 0600 UTC (1130 Hrs. IST) OF 1ST DECEMBER 2025



DATE/TIME IN UTC

IST=UTC + 0530

L: LOW PRESSURE AREA

WML: WELL MARKED LOW PRESSURE AREA

D: DEPRESSION (17-27 KT)

DD: DEEP DEPRESSION (28-33 KT)

CS: CYCLONIC STORM (34-47 KT)

SCS: SEVERE CYCLONIC STORM (48-63 KT)

VSCS: VERY SEVERE CYCLONIC STORM (64-89 KT)

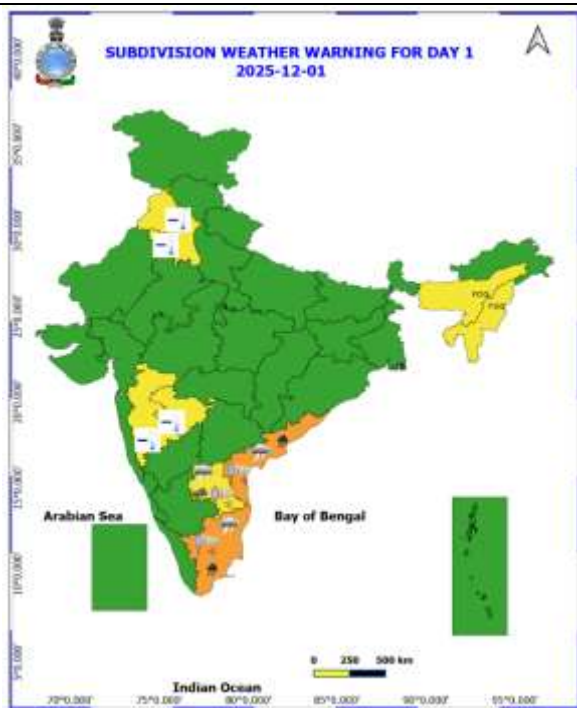
ESCS: EXTREMELY SEVERE CYCLONIC STORM (90-119 KT)

SuCS: SUPER CYCLONIC STORM (≥ 120 KT)

● LESS THAN 34 KT
○ 34-47 KT
● ≥ 48 KT
— OBSERVED TRACK
— FORECAST TRACK
▲ CONE OF UNCERTAINTY
AREA OF MAXIMUM SUSTAINED WIND SPEED:
28-33 KT (52-61 KMPH)
34-49 KT (62-91 KMPH)
50-63 KT (92-117 KMPH)
≥ 64 KT (≥ 118 KMPH)

IMPACT OVER THE SEA

MSW (knot/kmph)	Impact	Action
28-33 (52-61)	Very rough seas	Total suspension of fishing operations
34-49 (62-91)	High to very high seas	Total suspension of fishing operations
50-63 (92-117)	Very high seas	Total suspension of fishing operations
≥ 64 (≥ 118)	Phenomenal	Total suspension of fishing operations



Heavy Rain



Very Heavy Rain



Extremely Heavy Rain

COLOUR CODED WARNING

No Warning (No Action)

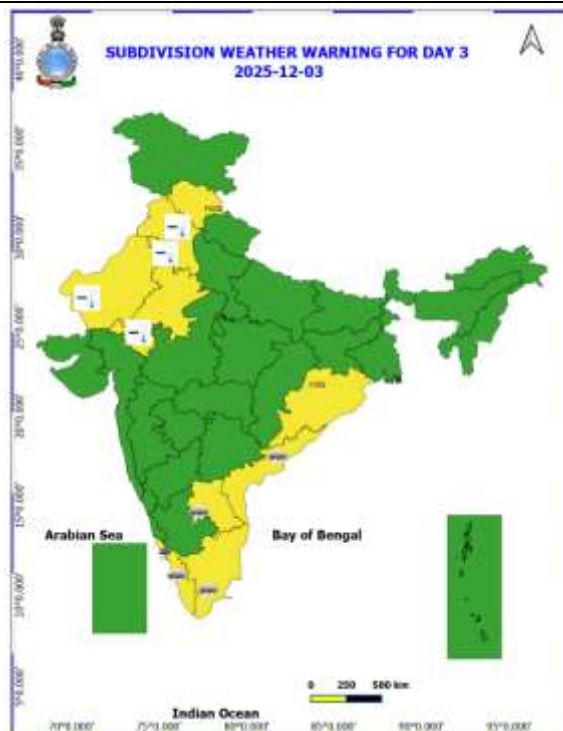
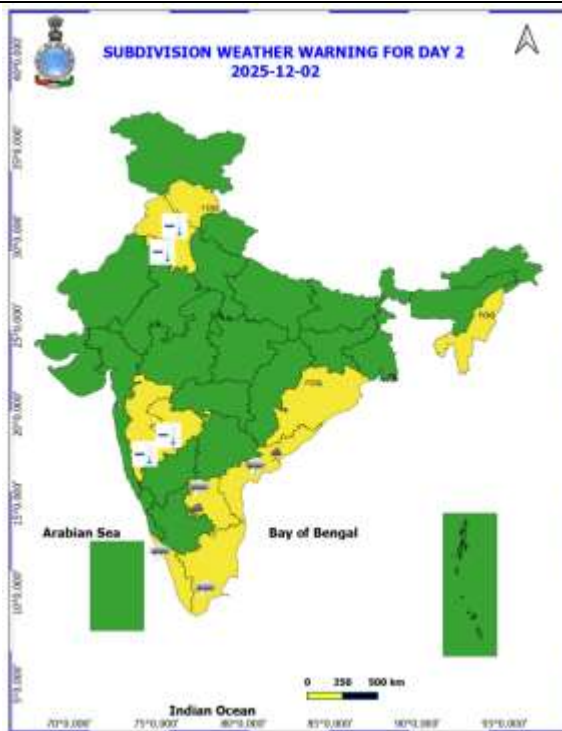
Watch (Be Aware)

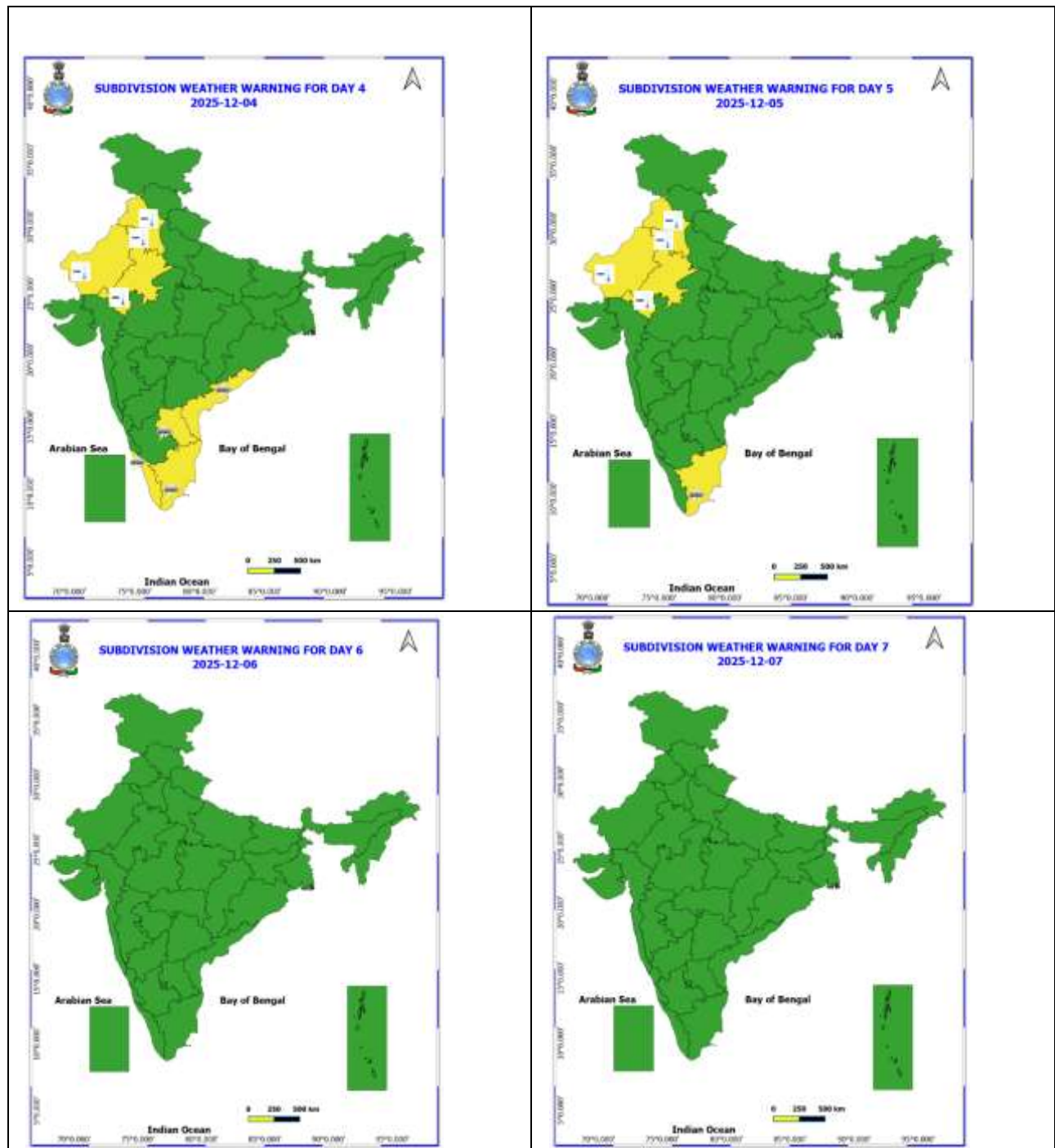
Alert (Be Prepared To Take Action)

Warning (Take Action)

Probabilistic Forecast

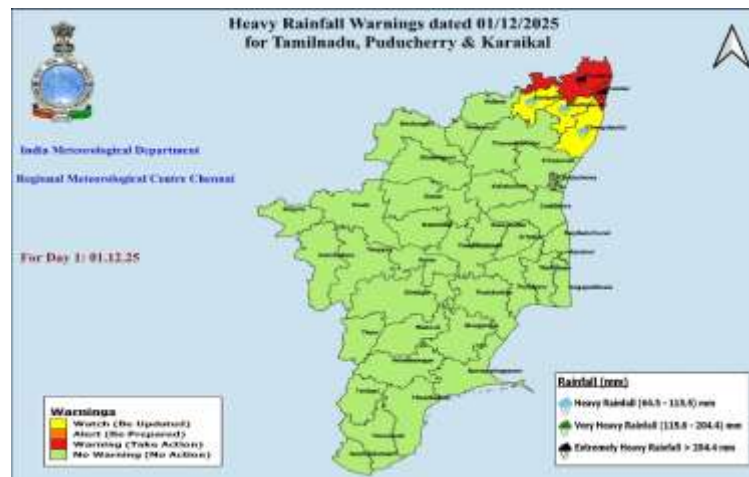
Terms	Probability of Occurrence (%)
Unlikely	< 25
Likely	25 - 50
Very Likely	50 - 75
Most Likely	> 75



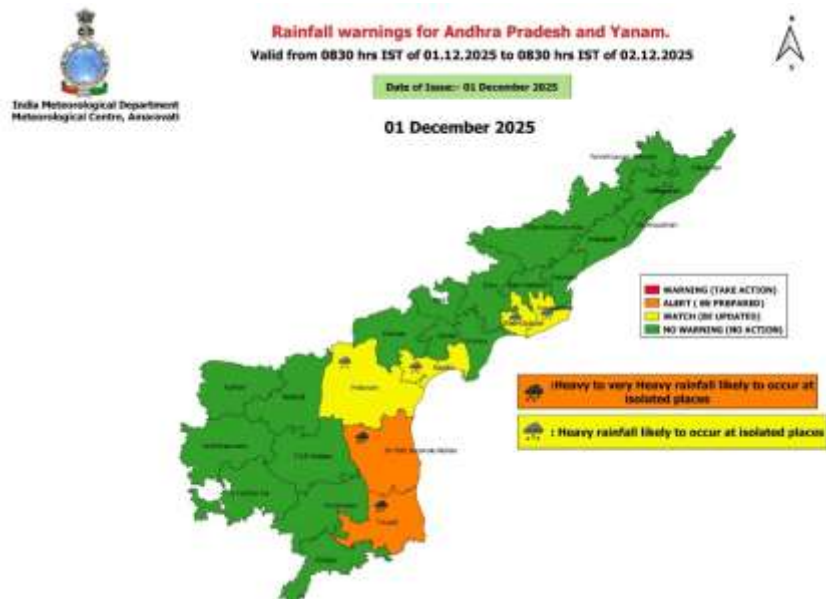


- Action may be taken based on **ORANGE** AND **RED** COLOUR warnings.
- Vulnerable regions likely urban and hilly areas action may be initiated for heavy rainfall warning.
- As the lead period increases forecast accuracy decreases.

District-wise Heavy Rainfall for Tamil Nadu & Puducherry



District-wise Heavy Rainfall for Coastal Andhra Pradesh



Fishermen Warning Graphics

