



Government of India  
Ministry of Earth Sciences  
India Meteorological Department



Press Release  
Date: 01<sup>st</sup> February 2026  
Time of Issue: 1345 hours

**Subject: (i) Under the influence of two Western Disturbance in quick succession, light to moderate scattered/fairly widespread rainfall/snowfall likely over Western Himalayan region and light to moderate isolated/scattered rainfall over adjoining plains of northwest India and Central India during 01<sup>st</sup> to 3<sup>rd</sup> February. Thereafter, a third western disturbance is likely to affect Western Himalayan region during 05<sup>th</sup> to 07<sup>th</sup> February, 2026.**

**(ii) Dense fog conditions likely during morning/night hours at a few places over Punjab, Haryana, Chandigarh till 03<sup>rd</sup> February and at isolated pockets till 5<sup>th</sup> February.**

**Realised weather during past 24 hours ending at 0830 hours IST of today, the 01<sup>st</sup> February, 2026:**

- ❖ **Dense to very Dense fog (visibility <50 m) conditions** prevailed at a few places over Punjab, Uttar Pradesh; in isolated pockets of Odisha, Haryana and **dense fog (visibility 50-199 m) conditions** in isolated pockets over Madhya Pradesh and Meghalaya
- ❖ **Visibility Reported (In Meters  $\leq 200$  m): Meghalaya:** Barapani(100); **Odisha:** Paradeep (20); **Bihar:** Gaya (50); **Punjab:** Amritsar(0), Patiala(10), Bhatinda AMFU(<50); **Haryana:** Ambala(20); **West Uttar Pradesh:** Sarsawa(IAF) & Bareilly(IAF)(0) each, Meerut(20), Hamirpur & Bareilly (40) Each, AMS Aligarh & Muzaffarnagar(50) Each, Hindon(IAF)(100); **East Uttar Pradesh:** Prayagraj(IAF) & Kanpur IAF(0) each, Prayagraj(15), Kanpur City(30), Ballia, Gorakhpur & Barabanki(40) each, Ayodhya, Fursatganj, Azamgarh & Varanasi A/P(50) each, Bahraich(60), Sultanpur(90), Gorakhpur & Lucknow(A/P)(100) Each; **West Madhya Pradesh:** Datia (50); **East Madhya Pradesh:** Khajurho (50)
- ❖ **Light to moderate rainfall/snowfall occurred at many places** over Jammu-Kashmir-Ladakh-Gilgit-Baltistan-Muzaffarabad and Himachal Pradesh
- ❖ **Light to moderate rainfall/snowfall occurred at isolated places** over Haryana, West Uttar Pradesh and East Rajasthan.
- ❖ **Thunderstorm accompanied with Squally/Gusty winds** with speed 30-50 kmph over Uttarakhand.

**Temperature Conditions during past 24 hours till 0830 hours IST of today:**

- ❖ **Minimum temperatures** were 0-5°C over Jammu-Kashmir-Ladakh-Gilgit-Baltistan-Muzaffarabad and Himachal Pradesh 5-10°C over Uttarakhand, plains of northwest India, Madhya Pradesh, north Chhattisgarh, Jharkhand, Sikkim, Assam, Meghalaya, Mizoram and Manipur. It was 10°C and above for remaining parts of the country, except higher reaches of Jammu-Kashmir-Ladakh-Gilgit-Baltistan-Muzaffarabad where it was less than 0°C.
- ❖ **Minimum Temperature Departures** were above normal by (3°C to 5°C) over Himachal Pradesh, Uttarakhand and West India by (1°C to 3°C) over Western Himalayan Region, Uttar Pradesh, Bihar, Odisha, Telangana, Coastal Andhra Pradesh & Yanam, North Interior Karnataka, Assam & Meghalaya and Gangetic West Bengal, and near normal over rest parts of the country. (refer to ANNEXURE IV)
- ❖ The **lowest minimum temperature** of 5.9°C was observed at Amritsar (**Punjab**) over the plains of India.

**Weather Systems, Forecast and Warnings (refer to ANNEXURE I & II):**

- ❖ The **Western Disturbance** as a **cyclonic circulation** over north Pakistan & neighbourhood in lower and middle tropospheric level with the trough aloft in upper tropospheric westerlies with its axis at 7.6 km above mean sea level roughly along Long. 68°E to the north of Lat. 30°N persists.
- ❖ An Induced **cyclonic circulation** lies over south Haryana & adjoining north Rajasthan in lower tropospheric level.
- ❖ A **trough** runs from West Madhya Pradesh to the induced **cyclonic circulation** over south Haryana & adjoining north Rajasthan across Gujarat region in lower tropospheric level.
- ❖ **Subtropical westerly Jet Stream** with core winds of the order of 125 knots at 12.6 km above mean sea level continue to prevail over Northeast India.

- ❖ An **upper air cyclonic circulation** over southeast Arabian sea adjoining Lakshadweep area and Kerala coast in lower tropospheric level.
- ❖ An upper air **cyclonic circulation** over Comorin area & neighbourhood extending upto 1.5 km above mean sea level persists.
- ❖ A fresh feeble **western disturbance** is likely to affect the higher reaches of Himalayan region from the night of 02<sup>nd</sup> February 2026.
- ❖ Another fresh **western disturbance** is likely to affect northwest India from the night of 05<sup>th</sup> February 2026.

**Under the influence of above system, the following weather is likely:**

- ❖ Scattered to fairly widespread rainfall/snowfall with **thunderstorm, lightning & gusty winds speed reaching (30-40 gusting to 50 kmph)** likely over Jammu-Kashmir-Ladakh-Gilgit-Baltistan-Muzaffarabad and Himachal Pradesh and Uttarakhand during 01<sup>st</sup>-03<sup>rd</sup> February.
- ❖ **Isolated to Scattered** light rainfall with **thunderstorm, lightning** with **gusty winds speed reaching (30-40 gusting to 50 kmph)** likely over Punjab Haryana Chandigarh and Madhya Pradesh on 01<sup>st</sup> February and Uttar Pradesh and East Rajasthan 01<sup>st</sup> & 2<sup>nd</sup> February & Madhya Maharashtra during 02<sup>nd</sup> February 2026.
- ❖ **Isolated Hailstorm activity also likely** over West Uttar Pradesh and East Rajasthan on 01<sup>st</sup> February, 2026.

**Forecast of minimum temperatures:**

- ❖ Gradual fall in minimum temperature by 2-4°C over major parts of Northwest India during next 3 days and no significant change thereafter.
- ❖ Gradual rise in minimum temperature by 2-4°C over Uttar Pradesh during next 2 days and fall by 2-3°C thereafter.
- ❖ Gradual rise in minimum temperature by 2-3°C over Vidarbha and Chhattisgarh during next 2 days.
- ❖ Gradual rise in minimum temperature by 2-3°C over Maharashtra during next 4 days and no significant change thereafter.
- ❖ No significant change in minimum temperatures likely over rest parts of the country.

**Dense Fog, Cold day Warnings:**

- ❖ **Dense fog conditions** likely during morning/night hours at a few places over Punjab, Haryana, Chandigarh till 03<sup>rd</sup> February and at isolated pockets till 5<sup>th</sup> February. Dense fog at isolated pockets likely over West Uttar Pradesh till 5<sup>th</sup> February; West Rajasthan, Madhya Pradesh, Bihar and Assam & Meghalaya till 02<sup>nd</sup> February; Sub-Himalayan West Bengal & Sikkim and Odisha till 03<sup>rd</sup> February; East Rajasthan during 03<sup>rd</sup> -05<sup>th</sup> February 2026.

**Weather conditions and forecast over Delhi/NCR during 01<sup>st</sup>-04<sup>th</sup> February, 2026 (ANNEXURE III) For more details, kindly refer National Weather Bulletin:**

[https://mausam.imd.gov.in/responsive/all\\_india\\_forecast\\_bulletin.php](https://mausam.imd.gov.in/responsive/all_india_forecast_bulletin.php)

For District wise warnings refer: <https://mausam.imd.gov.in/responsive/districtWiseWarningGIS.php>

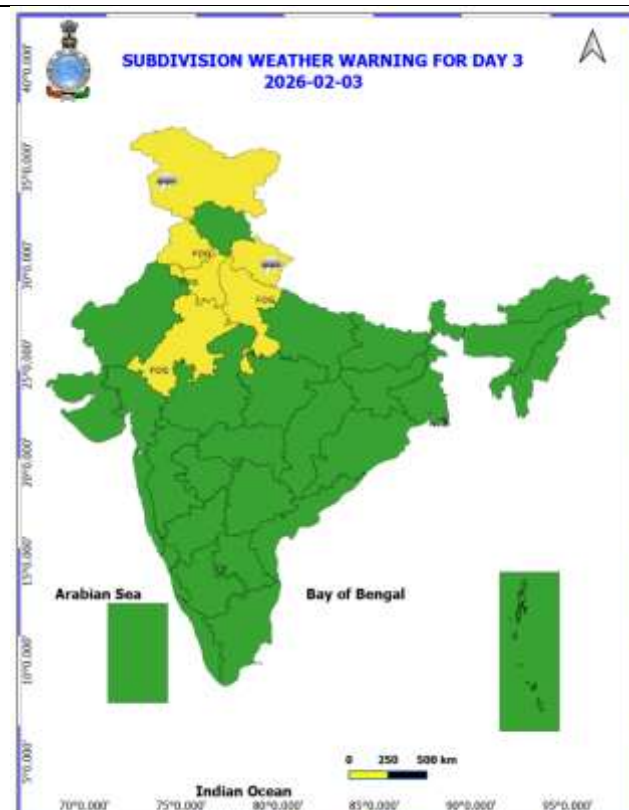
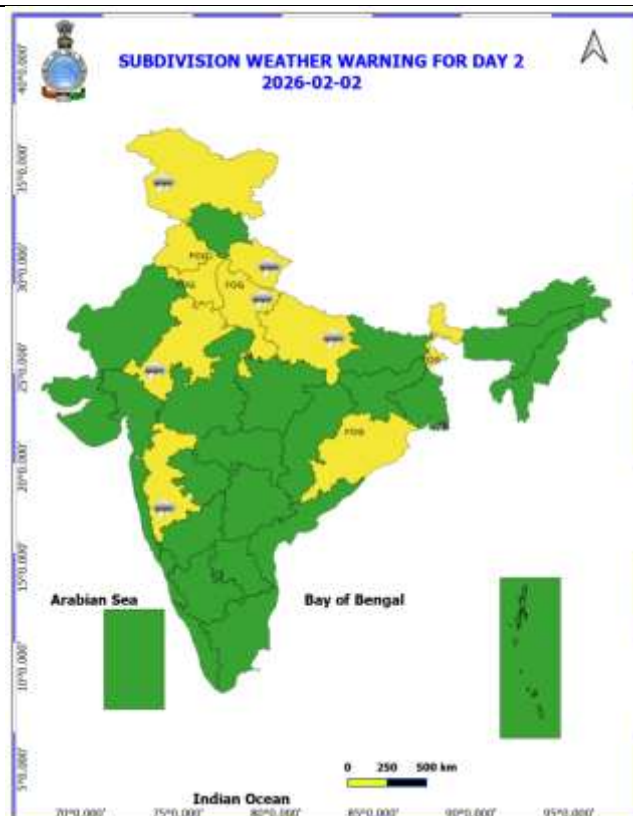
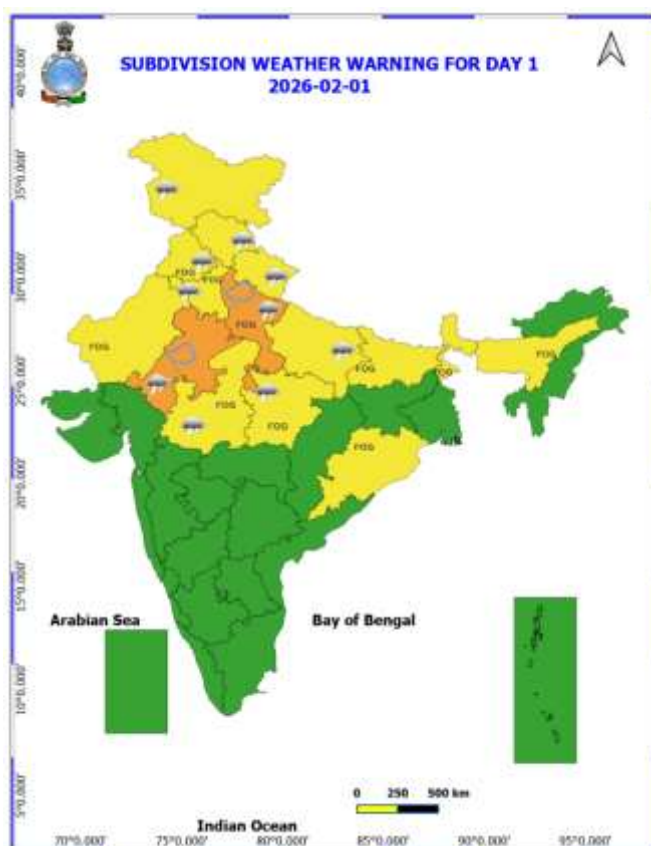
For Fishermen warning refer <https://rsmcnewdelhi.imd.gov.in/fishermen-warning.php>

**Fisherman Warning:**

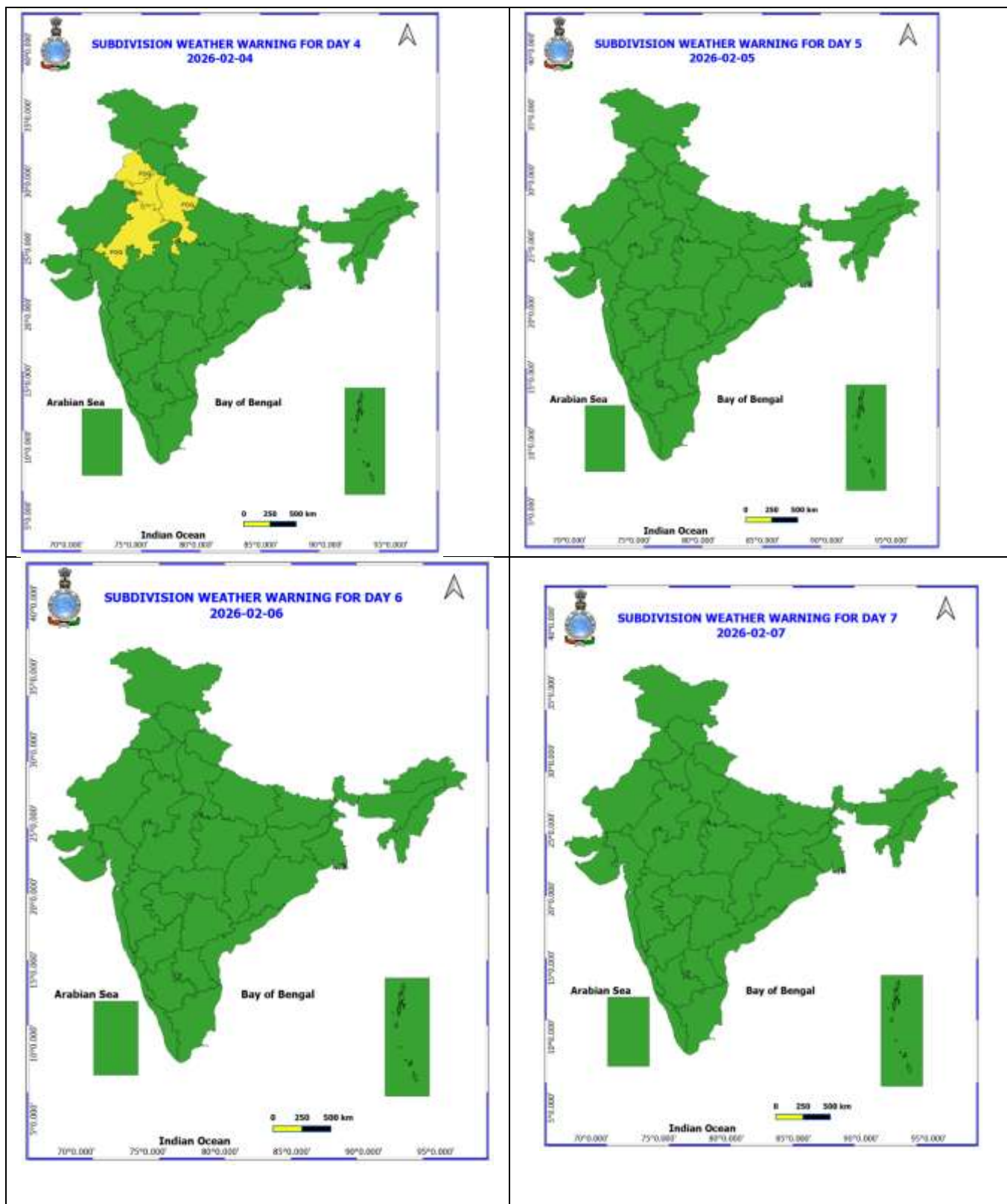
- ❖ Fishermen are advised not to venture into Gulf of Mannar and adjoining Comorin area during 01<sup>st</sup> - 05<sup>th</sup> February; southwest Bay & east Equatorial Indian Ocean on 04<sup>th</sup> February and along & off south Sri Lanka coast on 05<sup>th</sup> February.

Table-1								
7 Days Rainfall Forecast								
S.No.	Subdivision	1- Feb	2- Feb	3- Feb	4- Feb	5- Feb	6- Feb	7- Feb
		Day 1	Day 2	Day 3	Day 4	Day 5	Day 6	Day 7
1	ANDAMAN & NICOBAR ISLANDS	DRY	ISOL	ISOL	SCT	SCT	DRY	DRY
2	ARUNACHAL PRADESH	DRY	ISOL	ISOL	ISOL	DRY	DRY	DRY
3	ASSAM & MEHGHALAYA	DRY	DRY	DRY	DRY	DRY	DRY	DRY
4	NAGALAND, MANIPUR, MIZORAM AND TRIPURA	DRY	DRY	DRY	DRY	DRY	DRY	DRY
5	SUB HIMALAYAN WEST BENGAL & SIKKIM	DRY	DRY	ISOL	ISOL	DRY	DRY	DRY
6	GANGETIC WEST BENGAL	DRY	DRY	DRY	DRY	DRY	DRY	DRY
7	ODISHA	DRY	DRY	DRY	DRY	DRY	DRY	DRY
8	JHARKHAND	DRY	DRY	ISOL	DRY	DRY	DRY	DRY
9	BIHAR	DRY	DRY	ISOL	DRY	DRY	DRY	DRY
10	EAST UTTAR PRADESH	ISOL	ISOL	ISOL	DRY	DRY	DRY	DRY
11	WEST UTTAR PRADESH	SCT	SCT	ISOL	ISOL	DRY	DRY	DRY
12	UTTARAKHAND	FWS	ISOL	SCT	ISOL	DRY	ISOL	ISOL
13	HARYANA, CHANDIGARH & DELHI	FWS	ISOL	DRY	DRY	DRY	DRY	DRY
14	PUNJAB	SCT	ISOL	DRY	DRY	DRY	DRY	DRY
15	HIMACHAL PRADESH	FWS	SCT	SCT	DRY	DRY	ISOL	DRY
16	JAMMU AND KASHMIR AND LADAKH	FWS	SCT	FWS	ISOL	DRY	ISOL	DRY
17	WEST RAJASTHAN	DRY	DRY	DRY	DRY	DRY	DRY	DRY
18	EAST RAJASTHAN	ISOL	ISOL	DRY	DRY	DRY	DRY	DRY
19	WEST MADHYA PRADESH	ISOL	ISOL	ISOL	DRY	DRY	DRY	DRY
20	EAST MADHYA PRADESH	ISOL	ISOL	ISOL	ISOL	DRY	DRY	DRY
21	GUJRAT REGION	DRY	DRY	DRY	DRY	DRY	DRY	DRY
22	SAURASHTRA & KUTCH	DRY	DRY	DRY	DRY	DRY	DRY	DRY
23	KONKAN & GOA	DRY	ISOL	DRY	DRY	DRY	DRY	DRY
24	MADHYA MAHARASHTRA	DRY	ISOL	ISOL	DRY	DRY	DRY	DRY
25	MARATHWADA	DRY	ISOL	ISOL	DRY	DRY	DRY	DRY
26	VIDARBHA	DRY	ISOL	ISOL	DRY	DRY	DRY	DRY
27	CHHATTISGARH	DRY	DRY	ISOL	ISOL	DRY	DRY	DRY
28	COASTAL ANDHRA PRADESH	DRY	DRY	DRY	DRY	DRY	DRY	DRY
29	TELANGANA	DRY	DRY	DRY	DRY	DRY	DRY	DRY
30	RAYALASEEMA	DRY	DRY	DRY	DRY	DRY	DRY	DRY
31	TAMILNADU & PUDUCHERRY	ISOL	ISOL	DRY	ISOL	ISOL	DRY	DRY
32	COSTAL KARNATAKA	DRY	DRY	DRY	DRY	DRY	DRY	DRY
33	NORTH INTERIOR KARNATAKA	DRY	DRY	DRY	DRY	DRY	DRY	DRY
34	SOUTH INTERIOR KARNATAKA	DRY	DRY	DRY	DRY	DRY	DRY	DRY
35	KERALA AND MAHE	ISOL	ISOL	DRY	DRY	DRY	DRY	DRY
36	LAKSHADWEEP	DRY	DRY	SCT	DRY	DRY	DRY	DRY

- As the lead period increases forecast accuracy decrease.







- Action may be taken based on ORANGE AND REDCOLOUR warnings.
- Vulnerable regions likely urban and hilly areas action may be initiated for heavy rainfall warning.
- As the lead period increases forecast accuracy decreases.

Detailed districtwise Multi Hazard weather warning for next five days available at  
<https://mausam.imd.gov.in/responsive/districtWiseWarningGIS.php>

**Weather forecast over Delhi/NCR during 01<sup>st</sup> to 04<sup>th</sup> February 2026****Past Weather:**

There has been appreciable rise in the minimum temperature up to 2°C - 4°C and fall in the maximum temperature up to 1°C - 3°C during the past 24 hours over Delhi. The maximum temperatures over Delhi were around 20°C to 22°C and the minimum temperatures are around 11°C - 12°C respectively. The minimum temperatures are appreciably above normal (3.1°C to 5.0°C) at isolated places, above normal (1.6°C to 3.0°C) at few places and normal (-1.5°C to 1.5°C) over remaining parts of Delhi. The maximum temperatures are below normal (-1.6°C to -3.0°C) at isolated places, and normal (-1.5°C to 1.5°C) over remaining parts of Delhi. Safdarjung Airport reported lowest visibility 600m from 0030 IST to 0900 IST, which thereafter improved to 900m from 0930 IST of today, 01-02-2026. Palam Airport reported lowest visibility 500m from 0030 IST to 0100 IST, which thereafter improved to 600m from 0200 IST of today, 01-02-2026. Partly cloudy sky becoming generally cloudy sky towards evening. Very light rain accompanied with Thunderstorm/Lightning at most places over Delhi with predominant surface wind from the east directions with a wind speed up to 18 kmph prevailed during the past 24 hours. Generally cloudy sky conditions. The winds speed reaching up to 12 kmph from the southeast direction to be prevailed over the region in the forenoon today.

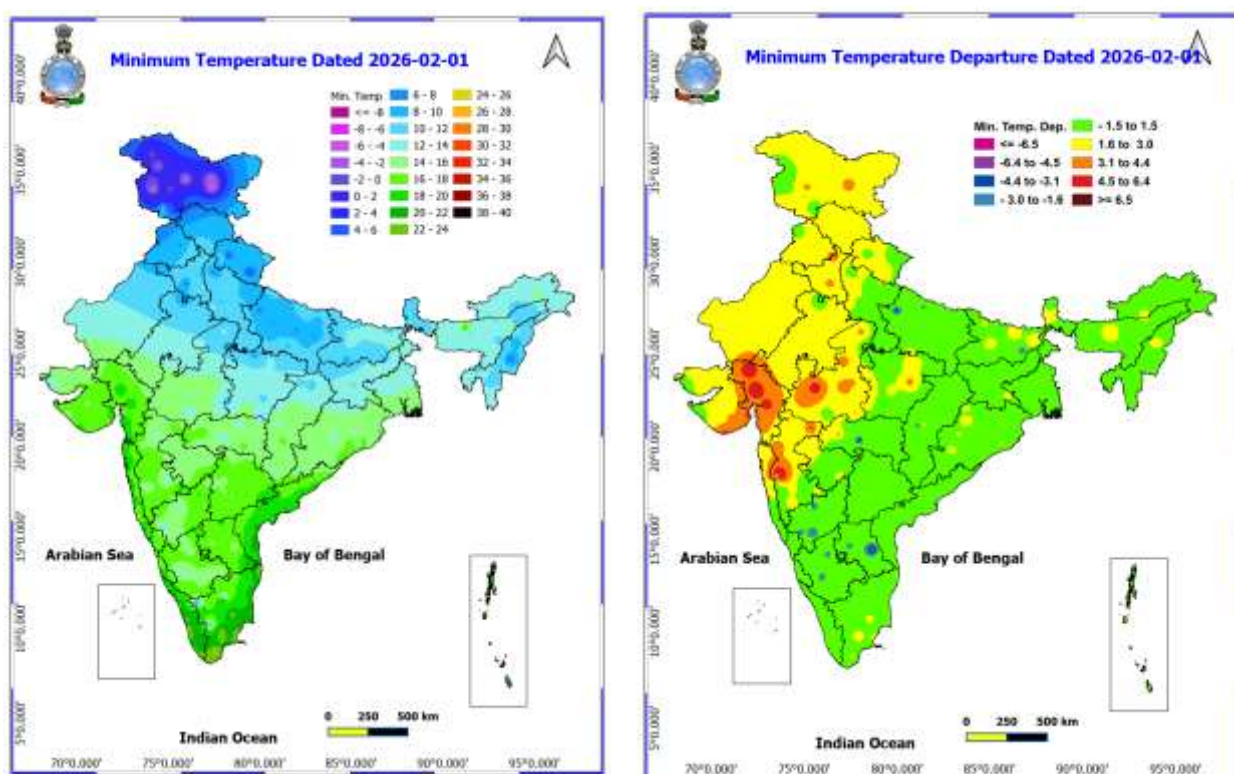
**Weather Forecast:**

**01.02.2026:** Generally cloudy sky. A spell of very light rain/drizzle accompanied with thunderstorm/lightning during afternoon to evening. The maximum temperatures are likely to be in the range of 21°C to 23°C. The maximum temperatures will be near normal over Delhi. The predominant surface wind is likely to be from the southeast direction reaching up to 12 kmph during the afternoon hours. The wind speed will decrease becoming less than 06 kmph from the northeast direction during evening and night.

**02.02.2026:** Generally cloudy sky. Shallow fog at many places with moderate fog at isolated places during morning hours. The maximum and minimum temperatures over Delhi are likely to be in the range of 20°C to 22°C and 10°C to 12°C respectively. The minimum temperature will above normal (1.6°C to 3.0°C) and the maximum temperatures will appreciable below normal (-1.6°C to -3.0°C) over Delhi. The predominant surface wind is likely to be from the north direction with wind speed associated with calm wind reaching up to 05 kmph during the morning hours. The wind speed will increase becoming up to 10 kmph from northwest direction during the afternoon. The wind speed will decrease becoming up to 05 kmph from the north direction during evening and night.

**03.02.2026:** Partly cloudy sky. Shallow fog at many places with moderate fog at isolated places during morning hours. The maximum and minimum temperatures over Delhi are likely to be in the range of 18°C to 20°C and 08°C to 10°C respectively. The minimum temperature will above normal (1.6°C to 3.0°C) and the maximum temperatures will be below normal (-1.6°C to -3.0°C) over Delhi. The predominant surface wind is likely to be from the northwest direction with wind speed associated with calm wind reaching up to 05 kmph during the morning hours. The wind speed will increase becoming up to 10 kmph from northwest direction during the afternoon. The wind speed will decrease becoming up to 05 kmph from the north direction during evening and night.

**04.02.2026:** Partly cloudy sky. Shallow fog at many places with moderate fog at isolated places during morning hours. The maximum and minimum temperatures over Delhi are likely to be in the ranges of 18°C to 20°C and 08°C to 10°C respectively. The predominant surface wind is likely to be from the north direction with wind speed associated with calm wind reaching up to 05 kmph during the morning hours. The wind speed will increase becoming upto 10 kmph from northwest direction in the afternoon. The wind speed will decrease becoming up to 05 kmph from the north direction during evening and night.



Reported minimum temperature over the plains ( $\leq 8^{\circ}\text{C}$ ) at 0830 hrs IST of the 01<sup>st</sup> February 2026.

STATION	STATE	TEMPERATURE
AMRITSAR	PUNJAB	5.9
MUZAFFAR NAGAR	UTTAR PRADESH	6.4
HARDOI	UTTAR PRADESH	6.5
SULTANPUR	UTTAR PRADESH	7.2
SHILLONG	MEGHALAYA	7.4
LUCKNOW	UTTAR PRADESH	7.6
LUDHIANA	PUNJAB	7.6
KHAJURAHO	MADAYA PRADESH	7.8
CHERRAPUNJI	MEGHALAYA	8.0
NAHAN	HARYANA	8.0
BARABANKI	UTTAR PRADESH	8.0

### Impact expected and action suggested due to isolated thunderstorm with lightning/ gusty winds and hailstorm over

- ❖ Light to moderate rainfall at isolated places over Western Himalayan Region on 03<sup>rd</sup> February. Scattered to fairly widespread rainfall/snowfall with **thunderstorm, lightning & gusty winds speed reaching (30-40 gusting to 50 kmph)** likely over Jammu-Kashmir-Ladakh-Gilgit-Baltistan-Muzaffarabad and Himachal Pradesh and Uttarakhand during 01<sup>st</sup>-03<sup>rd</sup> February.
- ❖ **Isolated to Scattered** light rainfall with **thunderstorm, lightning with gusty winds speed reaching (30-40 gusting to 50 kmph)** likely over Punjab Haryana Chandigarh and Madhya Pradesh on 01<sup>st</sup> February and Uttar Pradesh and East Rajasthan 01<sup>st</sup> & 2<sup>nd</sup> February & Madhya Maharashtra during 02<sup>nd</sup> February 2026.
- ❖ **Isolated Hailstorm activity also likely** over West Uttar Pradesh and East Rajasthan on 01<sup>st</sup> February, 2026.

**Impact expected:**

- Breaking of tree branches, uprooting of large avenue trees. Large dead limbs blown from trees. Damage to Standing crops.
- Minor to Major damage to banana and papaya trees.
- Minor to major damage to power and communication lines due to breaking of branches.
- Strong wind/hail may damage plantation, horticulture and standing crops.
- Hail may injure people and cattle at open places.
- Partial damage to vulnerable structures due to strong winds.
- Minor damage to kutcha houses/walls and huts.
- Loose objects may fly.

**Action suggested:**

- People are advised to keep a watch on the weather for worsening conditions and be ready to move to safer places accordingly.
- Stay indoors, close windows & doors and avoid travel if possible.
- Take safe shelters; do not take shelter under trees.
- Do not lie on concrete floors and do not lean against concrete walls.
- Unplug electrical/ electronic appliances.
- Immediately get out of water bodies.
- Keep away from all the objects that conduct electricity.

- ❖ **Impact expected due to dense fog in the morning/night hours:** likely during morning/night hours at a few places over Punjab, Haryana, Chandigarh till 03<sup>rd</sup> February and at isolated pockets till 5<sup>th</sup> February. Dense fog at isolated pockets likely over West Uttar Pradesh till 5<sup>th</sup> February; West Rajasthan, Madhya Pradesh, Bihar and Assam & Meghalaya till 02<sup>nd</sup> February; Sub-Himalayan West Bengal & Sikkim and Odisha till 03<sup>rd</sup> February; East Rajasthan during 03<sup>rd</sup> -05<sup>th</sup> February 2026.

**❖ Transport and Aviation:**

- May affect some airports, highways and railway routes in the areas of met- sub-division.
- Difficult driving conditions with slower journey times.
- Unless taken precautionary measures, it may lead to some road traffic collisions.

**❖ Power Sector:**

- Chances of Tripping of Power lines in the very dense fog routes.

**❖ Human Health:**

- Lung related health impacts: Dense fog contains particulate matter and other pollutants and in case exposed it gets lodged in the lungs, clogging them and decreasing their functional capacity which increases episodes of wheezing, coughing and shortness of breath.
- Impact on people having asthma bronchitis: Long time exposure to dense fog may cause respiratory problem for people having asthma bronchitis and other lung related health problems.
- Eye Irritation: Dense fog contains pollutions of various types and these Pollutants in the air if exposed may tend to irritate the membranes of the eye causing various infections leading to redness or swelling of the eye.

**Agromet advisories for likely impact of Hailstorm**

- Use hail nets to protect orchards and vegetable plants in West Uttar Pradesh and East Rajasthan.

**Agromet advisories for likely impact of Thunderstorm / Gusty Winds**

- Provide mechanical support to horticultural crops and staking or support to vegetables and young fruit plants / fruit-bearing plants to avoid lodging due to strong winds.

**Livestock**

- Keep the animals inside the shed during Hailstorm period and provide them balanced feed. Store feed and fodder in a safe place to prevent spoilage.



### Legends & abbreviations:

- ❖ **Heavy Rain:**64.5-115.5mm; **Very Heavy Rain:**115.6-204.4mm; **Extremely Heavy Rain:** >204.4mm.
- ❖ **Obsy:** Observatory; Automatic Weather Station; **ARG:** Automatic Rain Gauge; **dist:** District; **NH:** National Highway; **KVK:** Krishi Vigyan Kendra; **DVC:** Damodar Valley Corporation; **PTO:** Part Time Office, **Aero:** Aerodrome, **IAF:** Indian Air Force.
- ❖ **Region wise classification of meteorological Sub-Divisions:**
  - **Northwest India:** Western Himalayan Region (Jammu-Kashmir-Ladakh-Gilgit-Baltistan-Muzaffarabad, Himachal Pradesh and Uttarakhand); Punjab, Haryana-Chandigarh-Delhi; West Uttar Pradesh, East Uttar Pradesh, West Rajasthan and East Rajasthan.
  - **Central India:** West Madhya Pradesh, East Madhya Pradesh, Vidarbha and Chhattisgarh.
  - **East India:** Bihar, Jharkhand, Sub-Himalayan West Bengal & Sikkim; Gangetic West Bengal, Odisha and Andaman & Nicobar Islands.
  - **Northeast India:** Arunachal Pradesh, Assam & Meghalaya and Nagaland, Manipur, Mizoram & Tripura.
  - **West India:** Gujarat Region, Saurashtra & Kutch, Konkan & Goa, Madhya Maharashtra and Marathawada.
  - **South India:** Coastal Andhra Pradesh & Yanam, Telangana, Rayalaseema, Coastal Karnataka, North Interior Karnataka, South Interior Karnataka, Kerala & Mahe, Tamil Nadu, Puducherry & Karaikal and Lakshadweep.

## LEGENDS

1. अंडमान और निकोबार द्वीपसमूह

2. अरुणाचल प्रदेश

3. असम और मेघालय

4. नागालैंड, मणिपुर, मिजोरम और त्रिपुरा

5. उप-हिमालयी पश्चिम बंगाल और सिक्किम

6. गंगीय पश्चिम बंगाल

7. ओडिशा

8. झारखंड

9. बिहार

10. पूर्वी उत्तर प्रदेश

11. पश्चिम उत्तर प्रदेश

12. उत्तराखंड

13. हरियाणा, चंडीगढ़ और दिल्ली

14. पंजाब

15. हिमाचल प्रदेश

16. जम्मू और कश्मीर और लद्दाख

17. पश्चिम राजस्थान

18. पूर्वी राजस्थान

19. पश्चिम मध्य प्रदेश

20. पूर्वी मध्य प्रदेश

21. गुजरात

22. सौराष्ट्र

23. कोंकण और गोवा

24. मध्य महाराष्ट्र

25. मराठवाड़ा

26. विदर्भ

27. छत्तीसगढ़

28. तटीय आंध्र प्रदेश और यनम

29. तेलंगाना

30. रायलसीमा

31. तमिलनाडु, पुडुचेरी और कराईकल

32. तटीय कर्नाटक

33. आंतरिक उत्तरी कर्नाटक

34. आंतरिक दक्षिणी कर्नाटक

35. केरल और माहे

36. लक्षद्वीप



1. Andaman & Nicobar Islands

2. Arunachal Pradesh

3. Assam & Meghalaya

4. Nagaland, Manipur, Mizoram & Tripura

5. Sub-Himalayan West Bengal & Sikkim

6. Gangetic West Bengal

7. Odisha

8. Jharkhand

9. Bihar

10. East Uttar Pradesh

11. West Uttar Pradesh

12. Uttarakhand

13. Haryana, Chandigarh & Delhi

14. Punjab

15. Himachal Pradesh

16. Jammu & Kashmir and Ladakh

17. West Rajasthan

18. East Rajasthan

19. West Madhya Pradesh

20. East Madhya Pradesh

21. Gujarat

22. Saurashtra

23. Konkan & Goa

24. Madhya Maharashtra

25. Marathwada

26. Vidarbha

27. Chhattisgarh

28. Coastal Andhra Pradesh & Yanam

29. Telangana

30. Rayalaseema

31. Tamilnadu, Puducherry & Karaikal

32. Coastal Karnataka

33. North Interior Karnataka

34. South Interior Karnataka

35. Kerala & Mahe

36. Lakshadweep

## SPATIAL DISTRIBUTION (% of Stations reporting)

% Stations	Category	% Stations	Category
76-100	Widespread (WS/Most Places)	26-50	Scattered (SCT/A Few Places)
51-75	Fairly Widespread (FWS/Many Places)	1-25	Isolated (ISOL)



Fog



Heavy Snow



Cold Wave



Heavy Rain



Dust Storm



Cold Day



Very Heavy Rain



Heat Wave



Ground Frost



Extremely Heavy Rain



Warm Night



Thunder & Lightning



Hot Day



Hailstorm



Hot & Humid



Dust Raising Winds



Strong Surface Winds

### COLOUR CODED WARNING

No Warning (No Action)

Watch (Be Aware)

Alert (Be Prepared To Take Action)

Warning (Take Action)

### Probabilistic Forecast

Terms	Probability of Occurrence (%)
Unlikely	< 25
Likely	25 - 50
Very Likely	50 - 75
Most Likely	> 75

\* Red colour warning does not mean "Red Alert", Red colour warning means "Take Action".

Forecast and Warning for any day is valid from 0830 hours IST of day till 0830 hours IST of next day.

For more details, kindly visit <https://mausam.imd.gov.in> or contact: 011-2434-4599

(Service to the Nation since 1875)

## DEFINITION/CRITERIA

### Rain/ Snow \*

Heavy: 64.5 to 115.5 mm/cm \*  
Very Heavy: 115.6 to 204.4 mm/cm \*  
Extremely Heavy: > 204.4 mm/cm \*

### Heat Wave

When maximum temperature of a station reaches  $\geq 40^{\circ}\text{C}$  for plains and  $\geq 30^{\circ}\text{C}$  for hilly regions  
(a) Based on Departure from normal

Heat Wave: Maximum Temperature Departure from normal  $4.5^{\circ}\text{C}$  to  $6.4^{\circ}\text{C}$ .

Severe Heat Wave: Maximum Temperature Departure from normal  $\geq 6.5^{\circ}\text{C}$

(b). Based on Actual maximum temperature

Heat Wave: When actual maximum temperature  $\geq 45^{\circ}\text{C}$ .

Severe Heat Wave: When actual maximum temperature  $\geq 47^{\circ}\text{C}$ .

(c). Criteria for heat wave for coastal stations

When maximum temperature departure is  $> 4.5^{\circ}\text{C}$  from normal. Heat Wave may be described provided maximum temperature  $\geq 37^{\circ}\text{C}$ .

### Warm Night

When maximum temperature remains  $40^{\circ}\text{C}$

Warm Night: When minimum temperature departure  $4.5^{\circ}\text{C}$  to  $6.4^{\circ}\text{C}$ .

Severe Warm Night: When minimum temperature departure  $> 6.4^{\circ}\text{C}$ .

### Cold Wave

When minimum temperature of a station  $\leq 10^{\circ}\text{C}$  for plains and  $\leq 0^{\circ}\text{C}$  for hilly regions.

(a). Based on departure

Cold Wave: Minimum Temperature Departure from normal  $-4.5^{\circ}\text{C}$  to  $-6.4^{\circ}\text{C}$ .

Severe Cold Wave: Minimum Temperature Departure from normal  $\leq -6.5^{\circ}\text{C}$

(b) Based on actual Minimum Temperature (for Plains only)

Cold Wave: When Minimum Temperature is  $\leq 4.0^{\circ}\text{C}$

Severe Cold Wave: When Minimum Temperature is  $\leq 2.0^{\circ}\text{C}$

(c) For Coastal Stations

When Minimum Temperature departure is  $\leq -4.5^{\circ}\text{C}$  & actual Minimum Temperature is  $\leq 15^{\circ}\text{C}$

### Cold Day

When minimum temperature of a station  $\leq 10^{\circ}\text{C}$  for plains and  $\leq 0^{\circ}\text{C}$  for hilly regions

Based on departure

Cold Day: Maximum Temperature Departure from normal  $-4.5^{\circ}\text{C}$  to  $-6.4^{\circ}\text{C}$ .

Severe Cold Day: Maximum Temperature Departure from normal  $\leq -6.5^{\circ}\text{C}$

### Fog

Phenomenon of small droplets suspended in air and the horizontal visibility  $< 1\text{km}$

Moderate Fog: When the visibility between 500-200 metres

Dense Fog: when the visibility between 50- 200 metres

Very Dense Fog: when the visibility  $< 50$  metres

### Thunderstorm

Sudden electrical discharges manifested by a flash of light (Lightning) and a sharp rumbling sound (thunder)

### Dust/Sand Storm

An ensemble of particles of dust or sand energetically lifted to great heights by a strong and turbulent wind.

### Frost

Ice deposits on ground

Air temperature  $\leq 4^{\circ}\text{C}$  ( over Plains)

### Squall

A strong wind that rises suddenly, lasts for atleast 1 minute.

Moderate: Wind speed 52-61 kmph

Severe: Wind speed 62-67 kmph

Very Severe: Wind speed  $> 67$  kmph

### Sea State

Effect of various waves in the sea over specific area

Rough to very rough: Wind speed 41-62 kmph (22-33 knots) & Wave height 2.5-6 metre

High to very high: Wind speed 63-117 kmph (34-63 knots) & Wave height 6-14 metre

Phenomenal: Wind speed  $> 117$  kmph ( $> 63$  knots) & Wave height  $> 14$  metre

### Cyclone

Cyclonic Storm: Wind speed 62-87 kmph (34-47 knots)

Severe Cyclonic Storm: Wind speed 88-117 kmph (48-63 knots)

Very Severe Cyclonic Storm: Wind speed 118-165 kmph (64 - 89 knots)

Extremely Severe Cyclonic Storm: Wind speed 166-220 kmph (90 -119 knots)

Super Cyclone Storm: Wind speed  $> 220$  kmph ( $> 119$  knots)

\* Red colour warning does not mean "Red Alert", Red colour warning means "Take Action".

Forecast and Warning for any day is valid from 0830 hours IST of day till 0830 hours IST of next day.

For more details, kindly visit <https://mausam.imd.gov.in> or contact: 011-2434-4599

(Service to the Nation since 1875)