

**Government of India**  
**Earth System Science Organization**  
**Ministry of Earth Sciences**  
**India Meteorological Department**

**Press Release: Dated: 05<sup>th</sup> February 2026**

**Subject: Current Weather Status and Extended Range Forecast for the next two weeks (05 to 18 February 2026)**

**1. Salient Observed Features for the week ending 04<sup>th</sup> February 2026:**

- ❖ **Two successive Western Disturbances (WDs; 29<sup>th</sup> January – 3<sup>rd</sup> February & 2<sup>nd</sup> – 4<sup>th</sup> February) impacted northwest India during the week: Light to moderate rainfall/snowfall with thunderstorm and squally/gusty winds prevailed over Jammu-Kashmir-Ladakh, Himachal Pradesh, Uttarakhand during 1<sup>st</sup> – 4<sup>th</sup> February, and light to moderate rainfall with thunderstorm and squally/gusty winds prevailed over Haryana on 1<sup>st</sup> & 2<sup>nd</sup> February, East Rajasthan, West Uttar Pradesh during 1<sup>st</sup> – 4<sup>th</sup> February, Punjab on 2<sup>nd</sup> February, East Uttar Pradesh during 2<sup>nd</sup> – 4<sup>th</sup> February, Madhya Pradesh, Chhattisgarh on 4<sup>th</sup> February. Isolated hailstorm activity was recorded over Uttarakhand, West Madhya Pradesh on 2<sup>nd</sup> & 4<sup>th</sup> February, West Uttar Pradesh on 2<sup>nd</sup> & 3<sup>rd</sup> February, Himachal Pradesh on 4<sup>th</sup> February.**
- ❖ **Fresh dense fog/low cloud coverage observed and persisted for longer duration across Haryana, Delhi, West Uttar Pradesh, North Rajasthan during 1-4 February, 2026. During the week, isolated dense to very dense fog prevailed over Uttarakhand on 29<sup>th</sup> & 30<sup>th</sup> January, Punjab, Haryana on 29<sup>th</sup> January & 31<sup>st</sup> January – 4<sup>th</sup> February, West Uttar Pradesh during 29<sup>th</sup> January – 4<sup>th</sup> February, West Madhya Pradesh on 29<sup>th</sup> & 31<sup>st</sup> January & 3<sup>rd</sup> February, East Madhya Pradesh on 29<sup>th</sup> January, East Uttar Pradesh during 31<sup>st</sup> January – 4<sup>th</sup> February, Himachal Pradesh on 31<sup>st</sup> January, 3<sup>rd</sup> & 4<sup>th</sup> February, Odisha on 1<sup>st</sup> February, East Rajasthan on 2<sup>nd</sup> & 3<sup>rd</sup> February, Assam & Meghalaya on 3<sup>rd</sup> February. Dense fog prevailed over West Rajasthan on 29<sup>th</sup> January, East Rajasthan on 29<sup>th</sup> & 30<sup>th</sup> January & 4<sup>th</sup> February, Odisha on 29<sup>th</sup> & 30<sup>th</sup> January & 2<sup>nd</sup> February, East Uttar Pradesh on 29<sup>th</sup> & 30<sup>th</sup> January, Sub-Himalayan West Bengal & Sikkim on 30<sup>th</sup> & 31<sup>st</sup> January, Himachal Pradesh on 30<sup>th</sup> January & 2<sup>nd</sup> February, Haryana on 30<sup>th</sup> January, East Madhya Pradesh on 30<sup>th</sup> January & 1<sup>st</sup> February, Chhattisgarh on 30<sup>th</sup> January, Bihar on 31<sup>st</sup> January, 2<sup>nd</sup> & 4<sup>th</sup> February, Assam & Meghalaya on 31<sup>st</sup> January, 1<sup>st</sup> & 4<sup>th</sup> February, West Madhya Pradesh on 1<sup>st</sup> February, Delhi, Uttarakhand on 3<sup>rd</sup> & 4<sup>th</sup> February, Jharkhand on 4<sup>th</sup> February.**

- ❖ **No major cold day and cold wave spell reported during the week due to continued WDs activities across north and central India.**
- ❖ **Ground frost** conditions were observed in isolated pockets of Uttarakhand on 29<sup>th</sup> January & 4<sup>th</sup> February.
- ❖ **Heavy rainfall** was observed over isolated places over Lakshadweep on 4<sup>th</sup> February.
- ❖ **Weekly Average Maximum temperature** was below normal by 2-4°C over parts of north, northwest and adjoining central & east India during first half of the week. It was above normal by 2-4°C over parts of northeast India, and nearly normal over remaining parts of the country during the week. **Weekly Average Minimum temperature** was above normal by 2-4°C over parts of west, north, northwest and adjoining central & east India, and nearly normal over remaining parts of the country during the week.
- ❖ **Temperature Scenario:** The lowest minimum temperature of **2.0°C** had been recorded at **Narnaul (Haryana)** on **29<sup>th</sup> January, 2026** and the highest maximum temperature of **36.8°C** had been recorded at **Karwar (Karnataka)** on **01<sup>st</sup> February, 2026** over the plains of the country during the week.
- ❖ **Analysis of weekly overall rainfall distribution during the week ending on 04<sup>th</sup> February and the Winter Season's Rainfall Scenario (01.01.2026 to 04.02.2026):** The country as a whole, the weekly cumulative All India Rainfall (ending on 04<sup>th</sup> February) in % departure from its long period average (LPA) is -61%. All India Seasonal cumulative rainfall % departure during this year's Winter Season Rainfall (01.01.2026 to 04.02.2026) is -31%. Details of the rainfall distribution over the four broad geographical regions of India are provided in Table 1. Meteorological sub-division-wise rainfall for the week and season is presented in **Annexure I & II**, respectively.

**Table 1: Rainfall status (Week and season)**

Region	Week			Season		
	29.01.2026 TO 04.02.2026			01.01.2026 TO 04.02.2026		
	Actual (mm)	Normal (mm)	Departure (%)	Actual (mm)	Normal (mm)	Departure (%)
<b>EAST &amp; NORTHEAST INDIA</b>	<b>0.8</b>	<b>5.7</b>	<b>-85%</b>	<b>2.5</b>	<b>20.5</b>	<b>-88%</b>
<b>NORTHWEST INDIA</b>	<b>4.0</b>	<b>7.2</b>	<b>-44%</b>	<b>33.6</b>	<b>37.3</b>	<b>-10%</b>
<b>CENTRAL INDIA</b>	<b>0.4</b>	<b>1.7</b>	<b>-76%</b>	<b>1.9</b>	<b>8.1</b>	<b>-76%</b>
<b>SOUTH PENINSULA</b>	<b>0.2</b>	<b>1.1</b>	<b>-83%</b>	<b>8.8</b>	<b>8.4</b>	<b>5%</b>
<b>THE COUNTRY AS A WHOLE</b>	<b>1.5</b>	<b>3.9</b>	<b>-61%</b>	<b>13.1</b>	<b>19.1</b>	<b>-31%</b>

## **2. Large-scale features:**

- ❖ At present, weak La Niña conditions are prevailing over the equatorial Pacific region. The latest forecasts from the Monsoon Mission Climate Forecast System (MMCFS) indicate that the transition to ENSO-neutral is most likely in the January-March 2026 season and thereafter.
- ❖ Currently, neutral Indian Ocean Dipole (IOD) conditions are prevailing over the Indian Ocean. The latest MMCFS forecast suggests that these neutral IOD conditions are likely to persist during the January-February-March (JFM) season and thereafter.
- ❖ Madden Julian Oscillation (MJO) index is currently in Phase 1 with an amplitude less than 1. It is likely to migrate to Phase 2, with an amplitude remaining less than 1, by the middle of week 1. Thereafter, it is likely to loop and remain in Phase 2, with the amplitude remaining less than 1 for the remainder of Week 1 and the entire duration of Week 2.

## **3. Forecast for the next two weeks**

### **Weather systems & associated Precipitation during Week 1 (05 to 11 February 2026) and Week 2 (12 to 18 February 2026)**

### **Weather systems & associated Precipitation during Week 1 (05 to 11 February 2026):**

- ❖ A Western Disturbance seen as a trough in middle level tropospheric westerlies roughly along Long. 55°E to the north of Lat. 27°N.
- ❖ Subtropical westerly Jet Stream with core winds of the order of 125 knots at 12.6 km above mean sea level prevails over East & Northeast India.
- ❖ An upper air cyclonic circulation lies over North Kerala & neighbourhood in lower tropospheric levels.
- ❖ An upper air cyclonic circulation lies over northeast Assam & neighbourhood and extends in lower tropospheric levels.
- ❖ A fresh western disturbance is likely to affect western Himalayan region from the night of 08th February 2026.

### **Under the influence of above system, the following weather is likely:**

- ❖ Isolated rainfall/snowfall likely over Jammu-Kashmir-Ladakh-Gilgit-Baltistan-Muzaffarabad on 5<sup>th</sup> & 6<sup>th</sup>; Himachal Pradesh on 6<sup>th</sup> February.
- ❖ Another wet spell with Isolated to Scattered rainfall/snowfall likely over Jammu-Kashmir-Ladakh-Gilgit-Baltistan-Muzaffarabad, Himachal Pradesh and Uttarakhand during 9<sup>th</sup> - 11<sup>th</sup> February.
- ❖ Isolated ground frost activity also likely over Uttarakhand on 5<sup>th</sup> February 2026.

- ❖ Strong surface winds (20-30 kmph) likely over Northwest India next 2-3 days.

#### **Precipitation for week 2 (12 to 18 February 2026):**

- ❖ Under the influence of a feeble western disturbances, light/moderate rainfall/snowfall at isolated to scattered places likely over Western Himalayan Region (WHR) during some days of the week.
- ❖ Under the influence of the westerly trough, light rainfall/snowfall at isolated places also likely over Sikkim and Arunachal Pradesh during some days of the week.
- ❖ Overall, rainfall is likely to be below normal over most parts of the country. (Annexure III).

#### **Temperature forecast for Week 1 (06 to 12 February 2026) and Week 2 (13 to 19 February 2026)**

##### **Temperature forecast for Week 1 (06 to 12 February 2026):**

##### **Temperature Conditions during past 24 hours till 0830 hours IST of today:**

- ❖ **Minimum temperatures** were **0-5°C** over Jammu-Kashmir-Ladakh-Gilgit-Baltistan-Muzaffarabad and Himachal Pradesh and Uttarakhand **5-10°C** over Punjab, Haryana, Chandigarh, Delhi, North Rajasthan and West Uttar Pradesh and **10-15°C** many places of remaining parts of northwest India, Central, East & Northeast India. It was **15°C** and above for remaining parts of the country, except **higher reaches of Jammu-Kashmir-Ladakh-Gilgit-Baltistan-Muzaffarabad where it was less than 0°C.**
- ❖ **Minimum Temperature Departures** were above normal by (3°C to 5°C) over Gujarat State; by (1°C to 3°C) over Western Himalayan Region, Punjab, Uttar Pradesh, Rajasthan, Madhya Pradesh, Madhya Maharashtra, Bihar Odisha, Telangana, Coastal Andhra Pradesh & Yanam, North Interior Karnataka, Assam & Meghalaya and Gangetic West Bengal, Kerala & Mahe, Lakshadweep and Andaman & Nicobar Islands and near normal over rest parts of the country.
- ❖ The **lowest minimum temperature** of 4.5°C was observed at Sikar (**East Rajasthan**) over the plains of India.

##### **Forecast of minimum temperatures:**

- ❖ No significant change in minimum temperature over Northwest India during next 48 hours, fall by about 2°C for subsequent 24 hours and gradual rise by 2-4 °C thereafter.
- ❖ Gradual fall in minimum temperature by 2-3°C likely over East India during next 48 hours and no significant change thereafter.

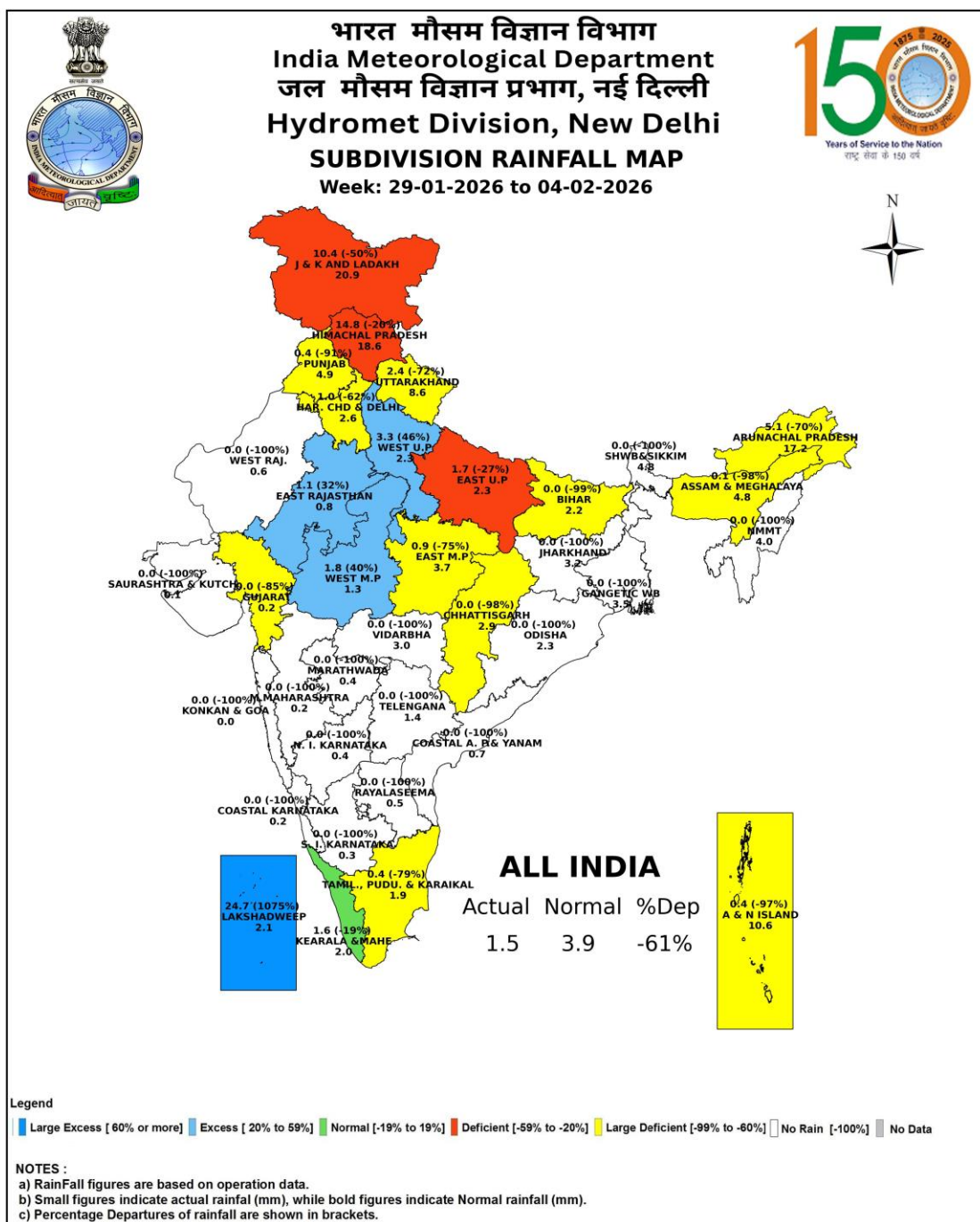
- ❖ No significant change in minimum temperatures likely over Maharashtra during next 4 days and gradual fall by 2-3°C for subsequent 3 days.
- ❖ No significant change in minimum temperatures likely over Northeast, Gujarat State and Central India during next 7 days.

**Dense Fog, Cold day Warnings:**

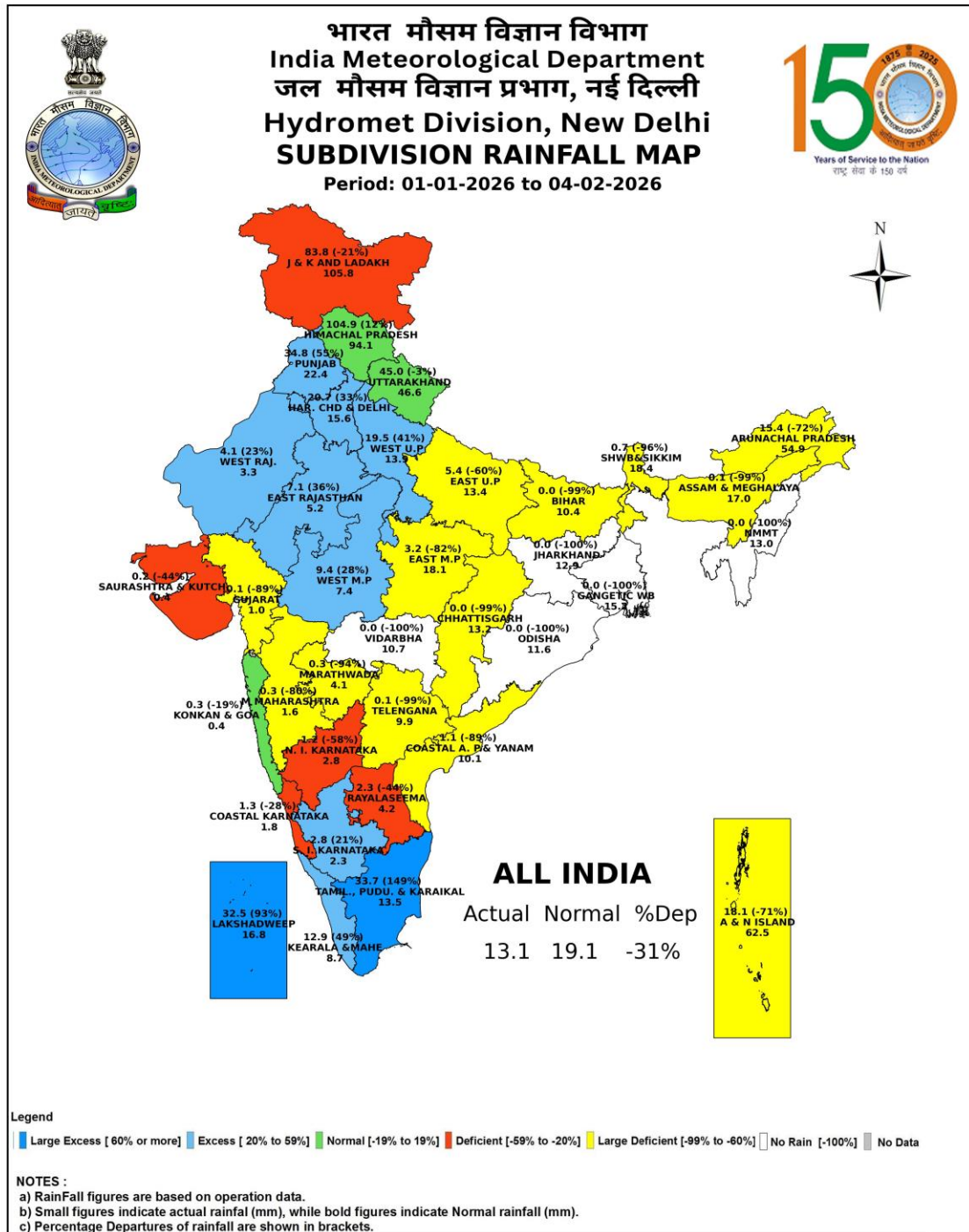
- ❖ **Dense fog conditions** likely during morning/night hours at isolated/ some places over Uttarakhand, Uttar Pradesh, Madhya Pradesh and Bihar till 6<sup>th</sup>; Himachal Pradesh till 7<sup>th</sup> February.

**Temperature forecast for Week 2 (13 to 19 February 2026):**

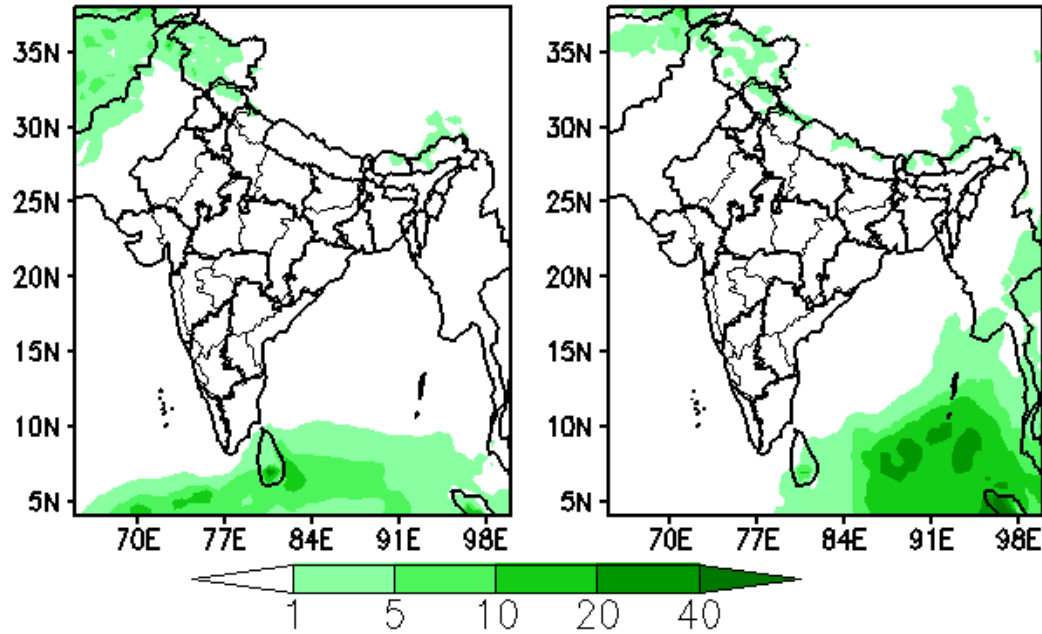
- ❖ Minimum temperatures are likely to rise gradually by 2-3 degrees over most parts of the country.
- ❖ Minimum temperatures are likely to be near normal or slightly below normal (by 1-2°C) over most parts of the country except East India, where they are likely to be below normal by 2-4°C. (Annexure IV)
- ❖ Cold wave and Dense fog conditions are unlikely over any part of the country during the week. (Annexure V).



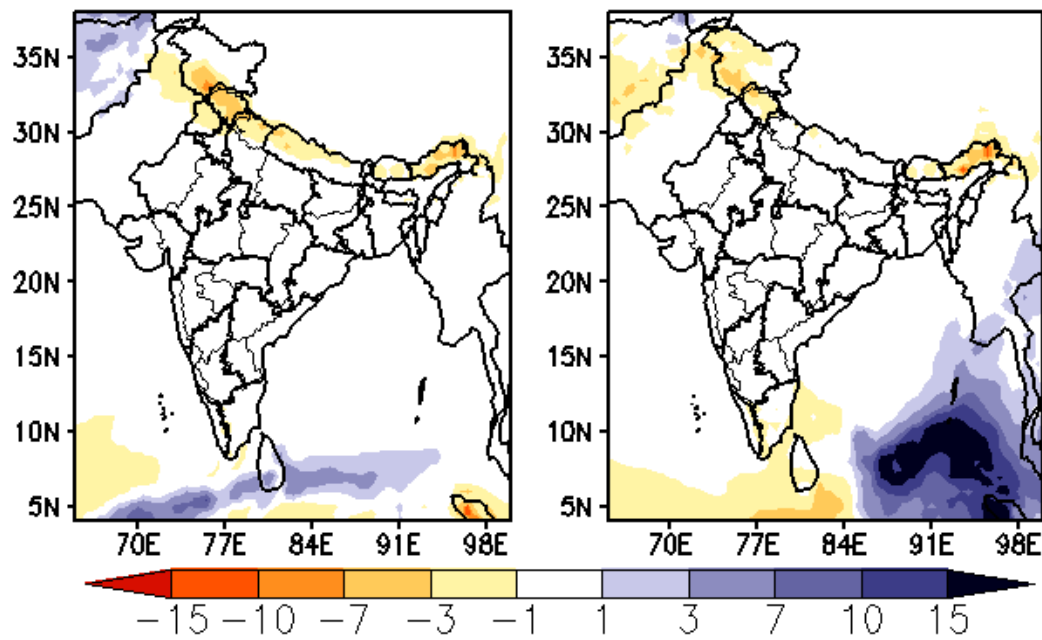




**Forecast Rainfall (mm/day)** (00Z=0530 hrs IST)  
 (Week1:00Z05Feb–00Z12Feb) (Week2:00Z12Feb–00Z19Feb)



**Forecast Rainfall Anomaly (mm/day)** (00Z=0530 hrs IST)  
 (Week1:00Z05Feb–00Z12Feb) (Week2:00Z12Feb–00Z19Feb)



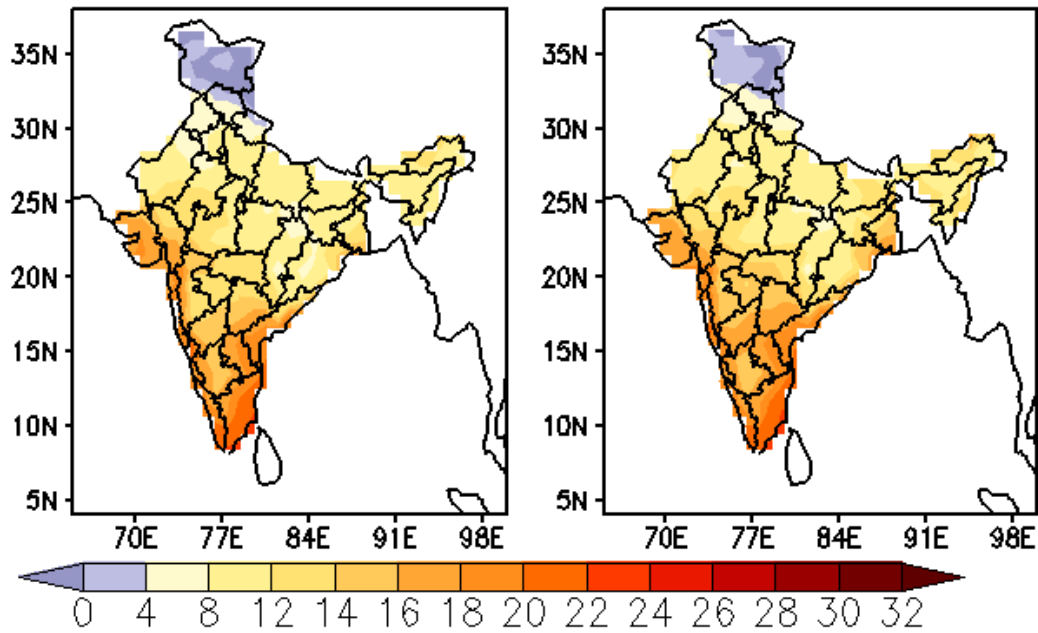
Extended range forecast of weekly distribution of rainfall in mm per day (top panel) and anomalies (lower panel) from IMD MME



**MME Bias corrected forecast Tmin (Deg C)**

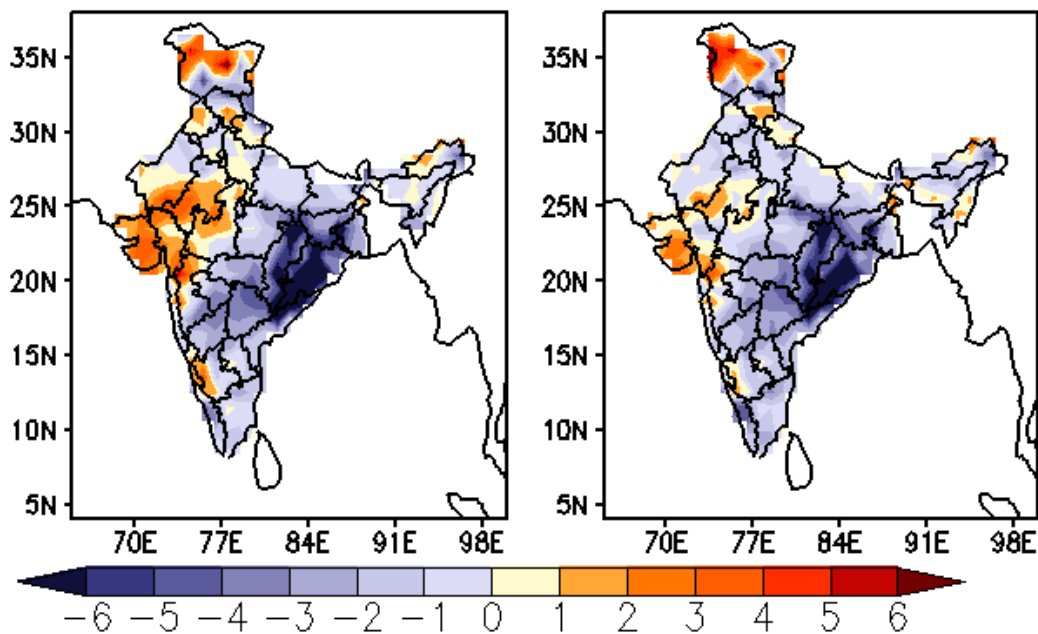
(Week1: 06Feb–12Feb)

(Week2: 13Feb–19Feb)

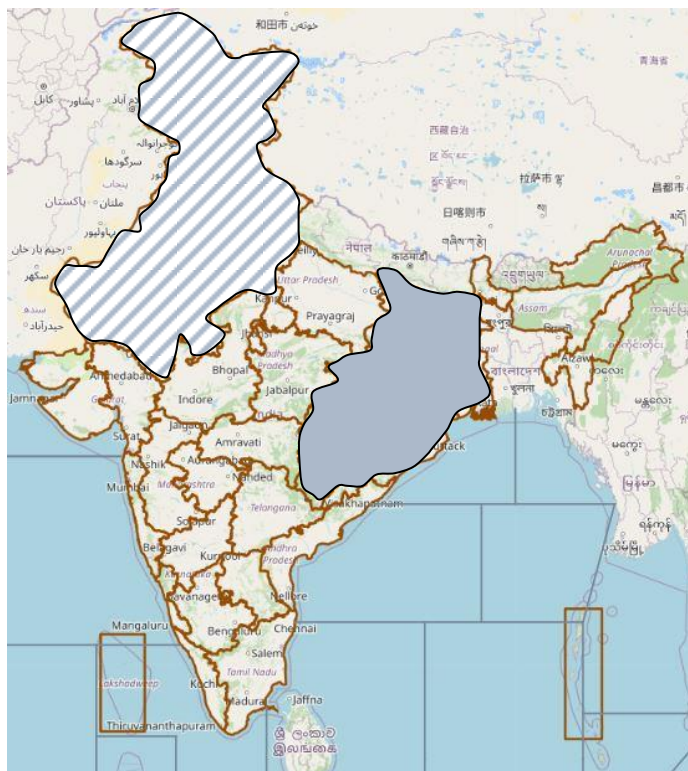
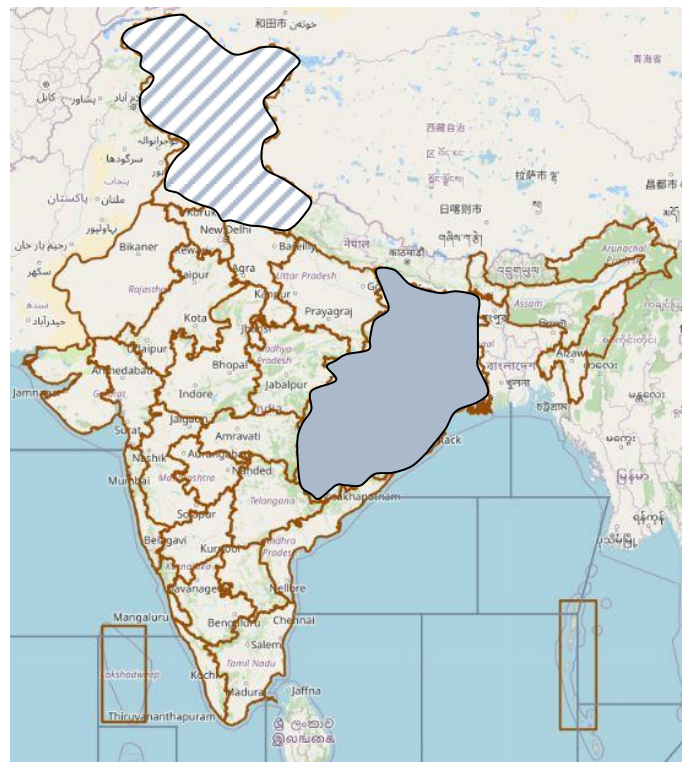
**MME forecast Tmin anomaly (Deg C)**

(Week1: 06Feb–12Feb)

(Week2: 13Feb–19Feb)



Extended range forecast of weekly distribution of Minimum Temperature in °C (top panel) and anomalies (lower panel) from IMD Bias Corrected Forecast

**EXTENDED RANGE OUTLOOK FOR COLD WAVE & MINIMUM TEMPERATURE****Week 1: 06.02.2026 - 12.02.2026****Week 2: 13.02.2026 - 19.02.2026****PROBABILITY OF COLD WAVE****CONFIDENCE****LOW (1-33% PROBABILITY)****MODERATE (34-67% PROBABILITY)****HIGH (68-100% PROBABILITY)****Below Normal Minimum Temperature****Above Normal Minimum Temperatures****Near Normal Minimum Temperatures**