



Government of India
Ministry of Earth Sciences
India Meteorological Department



Press Release
Date: 02nd June 2026
Time of Issue: 1330 hours IST

**Subject: (i) Southwest monsoon is likely to set in over Kerala around 4th June, 2026.
(ii) Isolated heavy to very heavy rainfall (7-20cm) very likely over Kerala and isolated heavy rainfall over Tamil Nadu and Karnataka during next 6-7 days.
(iii) Moderate to Severe Thunderstorm activity with squally wind speed upto 40 -50 kmph likely over many parts of Northwest, Central & East India and south Peninsular India during many days of the week.**

Advance of Southwest Monsoon 2026 (Annexure I):

- ❖ The **Northern Limit of Monsoon** continues to pass through 10°N/60°E, 9°/65°E, 8.5°N/70°E, 8°N/75°E, 7.8°N/78°E, 8°N/80°E, 10°N/80°E, 13°N/87°E, 16°N/90°E, 19°N/93°E and 22°N/97°E.
- ❖ **Conditions are favourable for further advance of southwest monsoon** into some more parts of southwest & southeast Arabian Sea, Lakshadweep Islands, some parts of Kerala & Tamil Nadu, some more parts of southwest, westcentral, eastcentral & northeast Bay of Bengal, and remaining parts of southeast Bay of Bengal around 4th June.

Realised weather during past 24 hours ending at 0830 hours IST of today, the 02nd June, 2026:

- ❖ **Very heavy rainfall (12-20cm) has been recorded at isolated places of Lakshadweep. Heavy rainfall (7-11 cm)** has been recorded at isolated places over East Rajasthan, West Madhya Pradesh and Gujarat Region
- ❖ **Thunderstorm accompanied with Squally/Gusty winds with speed reaching 70-95kmph** prevailed at isolated places over Odisha, Uttar Pradesh, West Madhya Pradesh, West Rajasthan, Gujarat Region; **with speed reaching 50-70 kmph** over Uttarakhand, Marathawada; **with speed reaching 40-50 kmph** over Andaman & Nicobar Islands, Sub-Himalayan West Bengal & Sikkim, Himachal Pradesh, Tamil Nadu, Puducherry & Karaikal.
- ❖ **Hailstorm** occurred at isolated places over Rajasthan, Himachal Pradesh, West Madhya Pradesh, Marathawada.
- ❖ **Duststorm** occurred at isolated places over West Rajasthan, Madhya Pradesh.

Temperature Conditions during past 24 hours till 0830 hours IST of today:

- ❖ **Day/Maximum Temperatures (as on 01-06-2026):** Yesterday, Maximum temperatures were in the range of 38-42°C over some parts of Central adjoining East India, North Peninsular India, Southwest Rajasthan, Saurashtra & Kutch and Interior Maharashtra and below 38°C elsewhere in the country. The highest maximum temperature of 44.8°C was reported at ADILABAD (TELANGANA).
- ❖ **Day/Maximum Temperature Departures (as on 01-06-2026):** Yesterday, Maximum temperatures were markedly above normal (> 5.1°C) at few places over Arunachal Pradesh; at isolated places over Assam & Meghalaya; appreciably above normal (3.1°C to 5.0°C) at many places over Sub Himalayan West Bengal & Sikkim; at few places over Coastal Karnataka; at isolated places over Gangetic West Bengal, Bihar, Konkan & Goa, Madhya Maharashtra and Tamil Nadu, Puducherry & Karaikal; above normal (1.6°C to 3.0°C) at few places over Kerala & Mahe; at isolated places over Saurashtra & Kutch, Vidarbha, Telangana and North Interior Karnataka and below normal & near normal over rest parts of the country.
- ❖ **Night Temperatures/Minimum temperatures (as on 02-06-2026)** were **appreciably above normal (3.1°C to 5.0°C)** over Jammu-Kashmir-Ladakh, Himachal Pradesh; **above normal (1.6°C to 3.0°C)** over Bihar, West Rajasthan, Saurashtra & Kutch, coastal Maharashtra, Odisha, Gangetic West Bengal, Arunachal Pradesh, Nagaland, Mizoram & Tripura and below normal or near normal over rest parts of the country.

Weather Systems, Forecast and Warnings (Annexure II & III):

- ❖ An **upper air cyclonic circulation lies** over Southeast Arabian Sea off south Kerala coast extending upto middle tropospheric level tilting southwestward with height.
- ❖ An **upper air cyclonic circulation lies** over Northeast & adjoining Eastcentral Bay of Bengal in lower tropospheric level.
- ❖ An **upper air cyclonic circulation lies** over Central Parts of Assam in lower tropospheric level.

- ❖ An **upper air cyclonic circulation** lay over East Madhya Pradesh & adjoining Chhattisgarh in lower tropospheric level.
- ❖ A **trough** runs from above **cyclonic circulation** over East Madhya Pradesh & adjoining Chhattisgarh to northeast Tamil Nadu across Vidarbha, Telangana and Rayalaseema in lower tropospheric level.
- ❖ Another **trough** runs from Central Pakistan to West Bengal coast across cyclonic circulation over Northeast Rajasthan, cyclonic circulation over east Madhya Pradesh and adjoining Chhattisgarh, & Jharkhand in lower tropospheric levels.
- ❖ The **Western Disturbance** as a cyclonic circulation over northwest Uttar Pradesh & neighbourhood persists and now seen between lower and upper tropospheric levels.
- ❖ An **upper air cyclonic circulation** lay over Central Pakistan and adjoining northwest Rajasthan in lower tropospheric level.
- ❖ An **upper air cyclonic circulation** over Northeast Rajasthan & neighbourhood in lower tropospheric level.
- ❖ A fresh **western Disturbance** is likely to affect northwest India from 3rd June.

Under the influence of above systems, the following weather is likely:

Northeast India:

- ❖ **Fairly widespread to widespread** light to moderate rainfall with **thunderstorm, lightning & gusty winds (speed reaching 40-50 kmph)** likely over northeast India during next 5 days.
- ❖ **Isolated heavy rainfall** likely over Arunachal Pradesh during 3rd -8th June; Assam & Meghalaya during 5th -8th June.

South Peninsular India:

- ❖ **Fairly widespread to widespread** light to moderate rainfall with **thunderstorm, lightning & gusty winds (speed reaching 40-50 kmph)** likely over Kerala & Mahe, Lakshadweep during 2nd – 6th June.
- ❖ **Isolated to scattered** light to moderate rainfall with **thunderstorm, lightning & gusty winds (speed reaching 40-50 kmph)** likely over Tamil Nadu, Puducherry & Karaikal, Coastal Andhra Pradesh & Yanam, Rayalaseema, North Interior Karnataka during 2nd -6th, Telangana during 1st – 5th June; South Interior Karnataka on 2nd June.
- ❖ **Thundersquall (wind speed reaching 50-60 kmph gusting to 70 kmph)** likely over Coastal Andhra Pradesh & Yanam and Telangana during 2nd -4th; Rayalaseema on 2nd & 3rd June
- ❖ **Isolated heavy rainfall** likely over Tamil Nadu, Puducherry & Karaikal during 2nd -8th; Lakshadweep, South Interior Karnataka and Coastal Karnataka during 2nd -7th; North Interior Karnataka during 2nd -6th June; with **very heavy rainfall** likely over Kerala & Mahe during 2nd – 8th June.

East India:

- ❖ **Widespread** light to moderate rainfall with **thunderstorm, lightning & gusty winds (speed reaching 40-50 kmph)** likely over Andaman & Nicobar Islands during 2nd -8th June.
- ❖ **Isolated to scattered** light to moderate rainfall with **thunderstorm, lightning & gusty winds (speed reaching 40-50 kmph)** likely over Sub-Himalayan West Bengal & Sikkim, Jharkhand during 2nd -8th, Gangetic West Bengal on 2nd & during 4th -8th; Bihar on 2nd, 7th & 8th; Odisha during 2nd -6th June.
- ❖ **Thunder squall (wind speed reaching 50-60 kmph gusting to 70 kmph)** likely over Odisha on 2nd & 3rd June.
- ❖ **Isolated heavy rainfall** likely over Sub-Himalayan West Bengal & Sikkim during 4th – 6th June

Northwest India:

- ❖ **Scattered to fairly widespread** light to moderate rainfall with **thunderstorm, lightning & gusty winds (speed reaching 40-50 kmph)** likely over Jammu-Kashmir & Uttarakhand during 2nd -6th; Himachal Pradesh during 3rd -5th June.
- ❖ **Isolated to Scattered** light to moderate rainfall with **thunderstorm, lightning & gusty winds (speed reaching 40-50 kmph)** likely over Haryana Chandigarh & Delhi, West Uttar Pradesh during 2nd -6th; Punjab during 3rd -6th; West Rajasthan during 2nd -4th; East Rajasthan during 2nd -5th June.
- ❖ **Thunder squall (wind speed reaching 50-60 kmph gusting to 70 kmph)** likely over Jammu-Kashmir, Punjab Haryana Chandigarh & Delhi on 3rd & 4th June; West Rajasthan on 2nd & 3rd; East Rajasthan during 2nd -4th June
- ❖ **Isolated Hailstorm activity** likely over Jammu-Kashmir and Rajasthan on 3rd & 4th June.
- ❖ **Duststorm** very likely at isolated places over West Rajasthan on 3rd June.

Central India:

- ❖ **Isolated to scattered** light to moderate rainfall with **thunderstorm, lightning & gusty winds (speed reaching 40-50 kmph)** likely over the region during next 5 days.
- ❖ **Thundersquall (wind speed reaching 50-60 kmph gusting to 70 kmph)** likely over Madhya Pradesh during 2nd – 4th; Vidarbha, Chhattisgarh on 2nd and during 4th -6th June.

- ❖ **Isolated Hailstorm activity** likely over Madhya Pradesh on 2nd & 4th June.

West India:

- ❖ **Isolated to scattered** light to moderate rainfall with **thunderstorm, lightning & gusty winds (speed reaching 40-50 kmph)** likely over Konkan & Goa and Madhya Maharashtra during 2nd – 6th; Marathawada during 2nd -4th; Gujarat State during 2nd -5th June
- ❖ **Thundersquall (wind speed reaching 50-60 kmph gusting to 70 kmph)** likely over Madhya Maharashtra, Marathawada on 2nd; Gujarat State 02nd & 3rd June.
- ❖ **Isolated Hailstorm activity** likely over Madhya Maharashtra 2nd June.

Forecast of maximum/day temperatures:

- ❖ Gradual rise by 2-4°C in maximum temperatures likely over many parts of Northwest India till 3rd. Gradual fall by 2-4°C during 4th -6th and gradual rise by 2-4°C on 7th & 8th June.
- ❖ Gradual rise in maximum temperatures by 2-3°C likely over East India till 3rd June and no significant change during 4th- 8th June.
- ❖ Gradual fall in maximum temperatures by 2-3°C likely over Maharashtra till 3th June and no significant change during 4th -8th June.
- ❖ No significant change in maximum temperatures likely over the rest parts of country till 08th June 2026.

Heat Wave, Hot & Humid weather conditions warning:

- ❖ **Heat wave condition** likely to prevail over Bihar during 4th – 6th June.
- ❖ **Hot and humid:** Sub-Himalayan West Bengal & Sikkim, Assam & Meghalaya, Konkan & Goa on 2nd & 3rd; Odisha during 2nd -6th; Arunachal Pradesh on 2nd; Nagaland, Manipur, Mizoram & Tripura during 2nd -4th June.

Fisherman Warning:

Fishermen are advised not to venture into the following areas.

Bay of Bengal:

Over Gulf of Mannar, Comorin & Maldives area, Sri Lanka coasts, many parts of south & adjoining central Bay of Bengal and over Andaman Sea during 02st June to 07th June and off north Tamil Nadu coasts during 04th to 07th June.

Arabian Sea:

Along & off Somalia coasts adjoining southwest Arabian sea during 03rd to 07th June. Along and off Kerala, Karnataka, Lakshadweep adjoining Maldives and adjoining sea areas during 02nd June to 07th June.

Weather conditions and forecast over Delhi/NCR during 02nd June -05th June, 2026 (Annexure IV)

For more details, kindly refer National Weather Bulletin:

https://mausam.imd.gov.in/responsive/all_india_forecast_bulletin.php

For District wise warnings refer: <https://mausam.imd.gov.in/responsive/districtWiseWarningGIS.php>

For Fishermen warning refer <https://rsmcnewdelhi.imd.gov.in/fishermenwarning.php>

Significant rainfall recorded (in cm) (from 0830 hours IST of yesterday to 0830 hours IST of today):

- ❖ **Lakshadweep:** 12
- ❖ **East Rajasthan:** Malpura(Tonk) 7
- ❖ **Gujarat Region:** Dandhuka(Ahmedabad) 10
- ❖ **West Madhya Pradesh:** Madhugarh(Mandsaur) 8, Neemuch 7

Gusty winds (in >= 40 kmph) (from 0830 hours IST of yesterday to 0830 hours IST of today):

- ❖ **Andaman & Nicobar Islands:** Sri Vijayapuram 41
- ❖ **Sub-Himalayan West Bengal & Sikkim:** North Dinajpur 44
- ❖ **Odisha:** Jharsuguda 80
- ❖ **Jharkhand:** Ramgarh 54
- ❖ **Bihar:** Arrabari 59
- ❖ **Himachal Pradesh:** Tabo 44
- ❖ **Uttarakhand:** Mukteshwer 63
- ❖ **West Uttar Pradesh:** Hathras(Aws) 74, Pali (Lalitpur)(Aws) 72, Madwara 61, Jhansi 35

- ❖ **East Uttar Pradesh:** Majidiha(Jaunpur) 87, Chitrakoot 70, Martinganj(Azamgarh) 67, Chandauli 67, Banda 57, Varanasi (AP) 44, Chitrakoot (AMS) 41
- ❖ **West Rajasthan:** Jaisalmer 83, Barmer 73
- ❖ **Madhya Maharashtra:** Jalgaon 56, Dhule 52, Kalwan (Nashik) 44
- ❖ **Marathawada:** Sagroli (Nanded) 61, Ambejogai (Beed) 50, Latur 43
- ❖ **Tamil Nadu, Puducherry & Karaikal:** Ranipet 46, Kalvai 43, Thiruchendur (Thoothukudi) 46
- ❖ **Madhya Pradesh:** Agar 89, Satna 57, Sagar 57
- ❖ **Gujarat State:** Arnej (Ahmedabad) 89, Bhachau AMFU(Kutch), Halvad (Morbi) 50

Annexure I

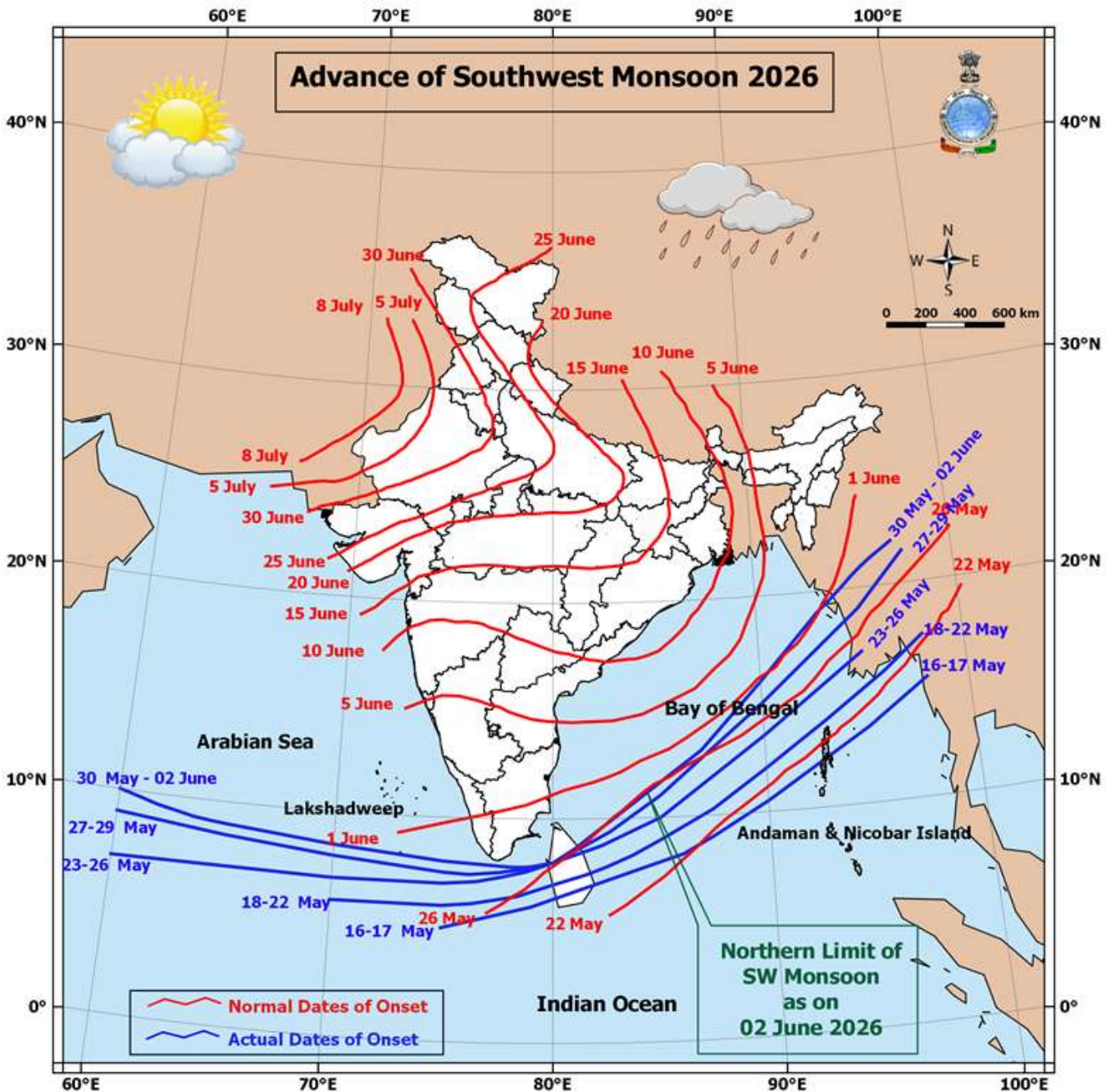
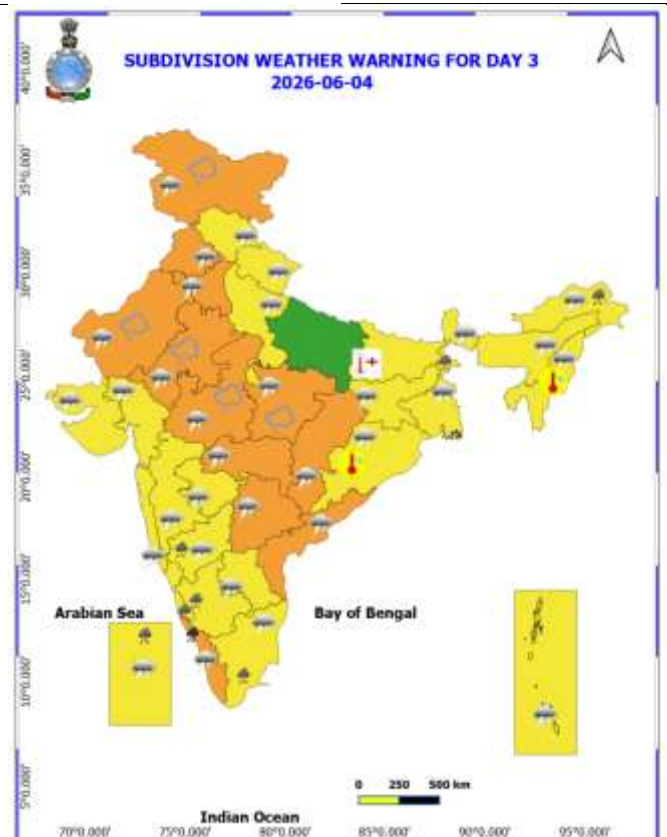
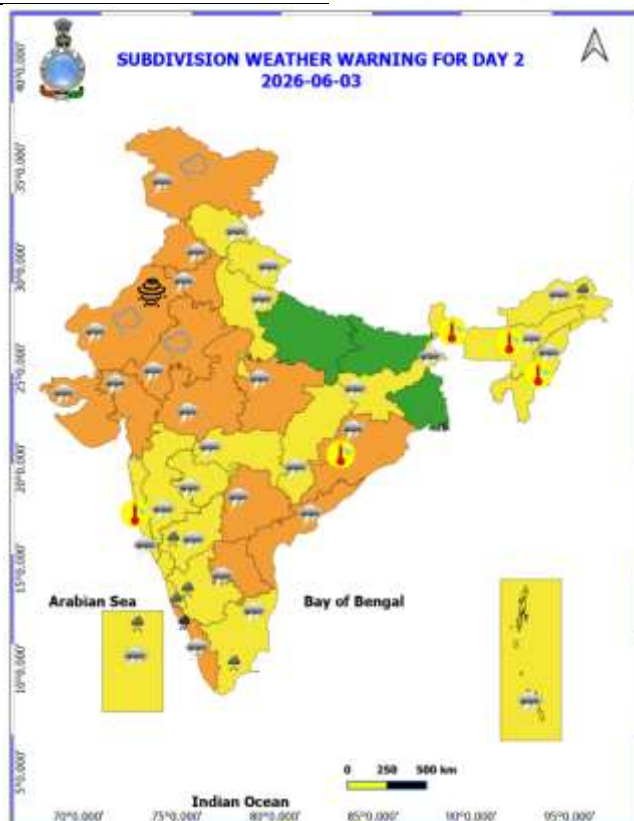
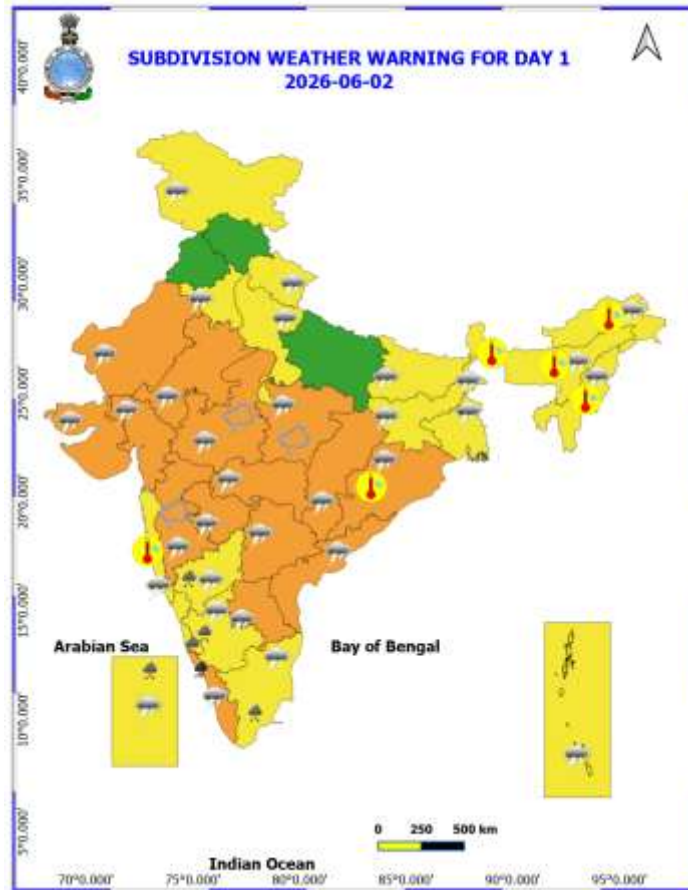
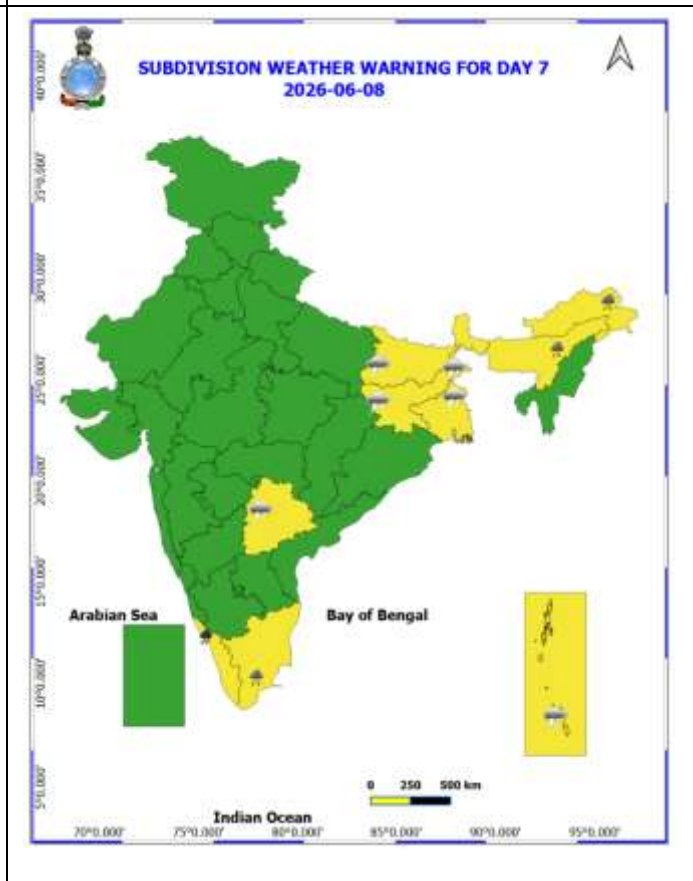
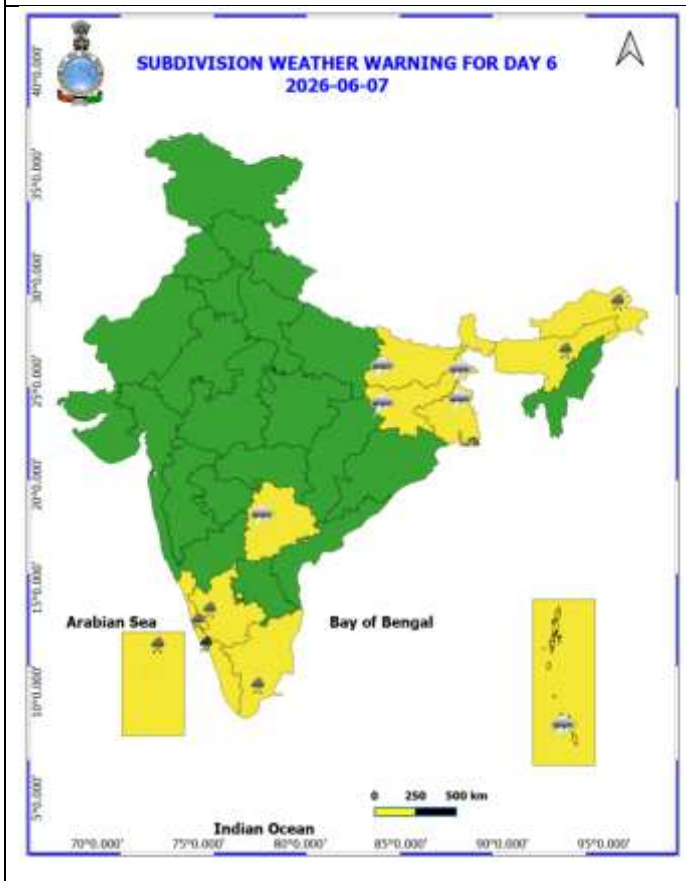
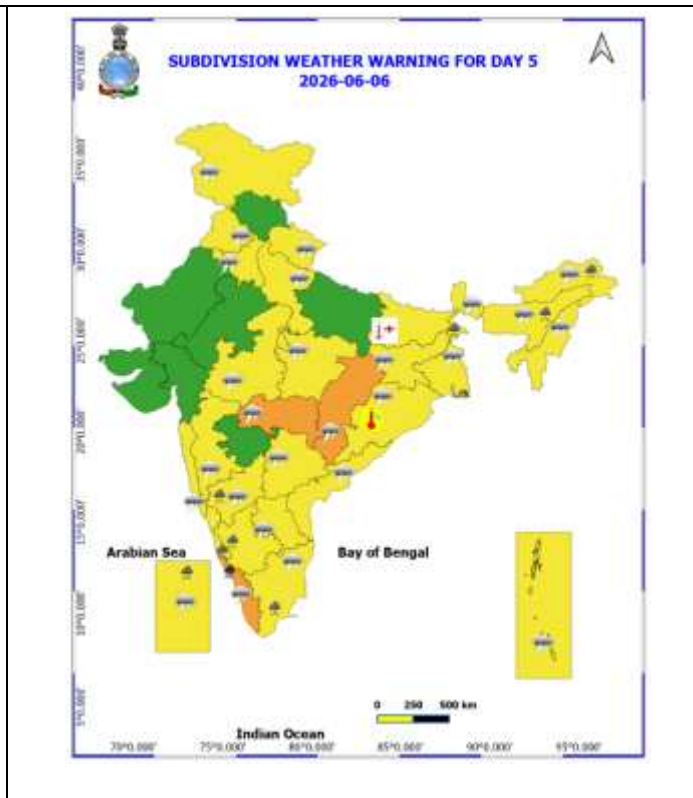
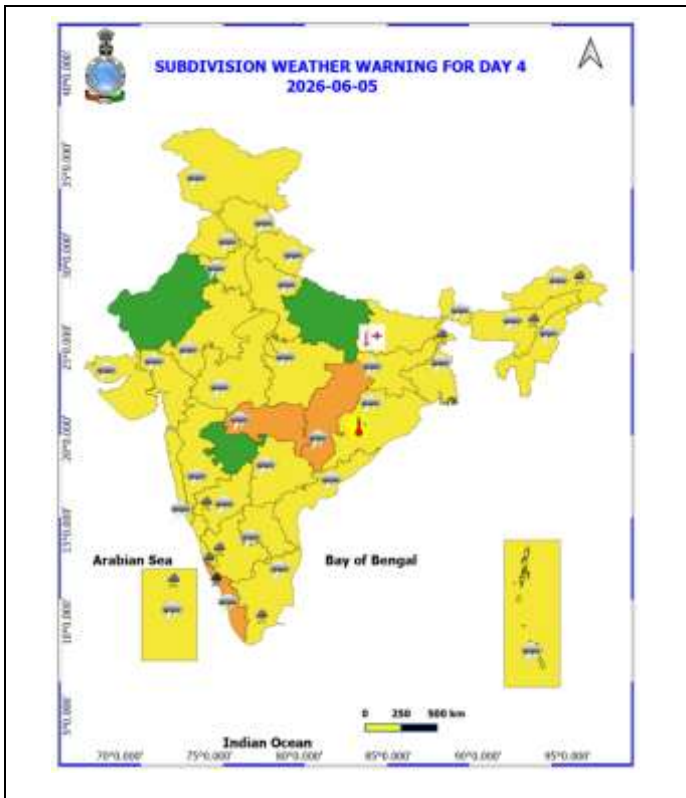


Table-1								
7 Days Rainfall Forecast								
S.No.	Subdivision	2- Jun	3- Jun	4- Jun	5- Jun	6- Jun	7- Jun	8- Jun
		Day 1	Day 2	Day 3	Day 4	Day 5	Day 6	Day 7
1	ANDAMAN & NICOBAR ISLANDS	WFS	WFS	WFS	WFS	WFS	WFS	WFS
2	ARUNACHAL PRADESH	SCT	SCT	FWS	FWS	FWS	WFS	WFS
3	ASSAM & MEHGHALAYA	SCT	SCT	FWS	FWS	WFS	WFS	WFS
4	NAGALAND, MANIPUR, MIZORAM AND TRIPURA	SCT	SCT	SCT	SCT	SCT	SCT	FWS
5	SUB HIMALAYAN WEST BENGAL & SIKKIM	SCT	FWS	WFS	WFS	WFS	FWS	FWS
6	GANGETIC WEST BENGAL	ISOL	ISOL	SCT	SCT	SCT	ISOL	ISOL
7	ODISHA	ISOL	ISOL	ISOL	SCT	SCT	SCT	SCT
8	JHARKHAND	ISOL	ISOL	ISOL	ISOL	ISOL	ISOL	ISOL
9	BIHAR	ISOL	DRY	DRY	ISOL	ISOL	ISOL	ISOL
10	EAST UTTAR PRADESH	ISOL	ISOL	DRY	DRY	ISOL	ISOL	DRY
11	WEST UTTAR PRADESH	ISOL	ISOL	ISOL	ISOL	ISOL	DRY	DRY
12	UTTARAKHAND	SCT	SCT	SCT	SCT	ISOL	ISOL	ISOL
13	HARYANA, CHANDIGARH & DELHI	ISOL	SCT	SCT	ISOL	ISOL	DRY	DRY
14	PUNJAB	ISOL	SCT	SCT	ISOL	ISOL	DRY	DRY
15	HIMACHAL PRADESH	ISOL	SCT	FWS	FWS	SCT	ISOL	ISOL
16	JAMMU AND KASHMIR AND LADAKH	ISOL	FWS	WFS	FWS	SCT	ISOL	ISOL
17	WEST RAJASTHAN	ISOL	ISOL	ISOL	ISOL	ISOL	DRY	DRY
18	EAST RAJASTHAN	SCT	ISOL	ISOL	ISOL	ISOL	DRY	DRY
19	WEST MADHYA PRADESH	SCT	ISOL	SCT	ISOL	ISOL	ISOL	ISOL
20	EAST MADHYA PRADESH	ISOL	ISOL	ISOL	ISOL	ISOL	ISOL	DRY
21	GUJRAT REGION	FWS	SCT	ISOL	ISOL	ISOL	ISOL	ISOL
22	SAURASHTRA & KUTCH	SCT	ISOL	ISOL	ISOL	DRY	ISOL	ISOL
23	KONKAN & GOA	ISOL	ISOL	ISOL	SCT	ISOL	SCT	SCT
24	MADHYA MAHARASHTRA	ISOL	ISOL	ISOL	ISOL	ISOL	ISOL	ISOL
25	MARATHWADA	SCT	ISOL	ISOL	ISOL	ISOL	ISOL	ISOL
26	VIDARBHA	ISOL	ISOL	ISOL	SCT	ISOL	ISOL	ISOL
27	CHHATTISGARH	ISOL	ISOL	ISOL	ISOL	ISOL	ISOL	ISOL
28	COASTAL ANDHRA PRADESH	SCT	SCT	SCT	SCT	SCT	SCT	SCT
29	TELANGANA	ISOL	SCT	FWS	FWS	FWS	SCT	SCT
30	RAYALASEEMA	SCT	SCT	SCT	SCT	SCT	SCT	SCT
31	TAMILNADU & PUDUCHERRY	SCT	SCT	SCT	SCT	SCT	SCT	ISOL
32	COSTAL KARNATAKA	FWS	FWS	FWS	FWS	FWS	FWS	WFS
33	NORTH INTERIOR KARNATAKA	SCT	SCT	SCT	SCT	SCT	FWS	SCT
34	SOUTH INTERIOR KARNATAKA	FWS	FWS	FWS	FWS	FWS	FWS	SCT
35	KERALA AND MAHE	WFS	WFS	WFS	WFS	WFS	WFS	WFS
36	LAKSHADWEEP	WFS	WFS	WFS	WFS	WFS	WFS	WFS

- As the lead period increases forecast accuracy decrease.





- Action may be taken based on ORANGE AND REDCOLOUR warnings.
- Vulnerable regions likely urban and hilly areas action may be initiated for heavy rainfall warning.
- As the lead period increases forecast accuracy decreases.

Detailed district-wise Multi-Hazard weather warning for next five days available at <https://mausam.imd.gov.in/responsive/districtWiseWarningGIS.php>

Weather forecast over Delhi/NCR during 02nd June to 05th June 2026**Past Weather:**

There has been a rise in maximum temperatures by about 1°C and rise in minimum temperatures by 2°C during past 24 hours over Delhi. The maximum temperatures were in the range of 35-36°C and the minimum temperatures are in the range 24-27°C, respectively during past 24 hours over Delhi. The minimum temperatures are below normal (-1.6°C to -3.0°C at a few places and normal (-1.5°C to 1.5°C) over remaining parts of Delhi. The maximum temperatures were markedly below normal (-5.1°C or less) at a few places, appreciably below normal (-3.1°C to -5.0°C) over remaining parts of Delhi. Partly cloudy sky with wind speed 20 kmph gusting to 33 kmph over Delhi during past 24 hours. Partly cloudy sky with surface wind speeds up to 16 kmph likely to prevailed from east direction over the region in the forenoon today.

Weather Forecast:

02.06.2026: Partly cloudy sky becoming generally cloudy sky. A spell of very light to light rain accompanied with thunderstorm/lightning and strong wind speed reaching 30-40 kmph gusting to 50 kmph towards afternoon to evening. The maximum temperatures over Delhi are likely to be in the range of 36°C to 38°C. The maximum temperatures will be below normal (-1.6°C to -3.0°C) at most places over Delhi. The predominant surface wind is likely to be from the northeast direction with wind speed reaching up to 15 kmph during the afternoon hours. The surface wind speed will gradually decrease becoming up to 12 kmph from the south direction during evening and night.

03.06.2026: Partly cloudy sky. Possibility of very light rain/drizzle accompanied with thunderstorm/ lightning and strong wind speed reaching 20-30 kmph gusting to 40 kmph towards afternoon to evening. The maximum and minimum temperatures over Delhi are likely to be in the range of 37°C to 39°C and 26°C to 28°C, respectively. The minimum temperature will be near normal (-1.5°C to 1.5°C) at most places, and maximum temperatures will be below normal (-1.6°C to -3.0°C) at most places over Delhi. The predominant surface wind is likely to be from northwest direction with surface wind speed reaching up to 10 kmph during the morning hours. The surface wind speed will slightly increase becoming up to 15 kmph from northwest direction during the afternoon. The surface wind speed will further increase becoming up to 20 kmph from the southeast direction during evening and night.

04.06.2026: Partly cloudy sky becoming generally cloudy sky. A spell of very light to light rain accompanied with thunderstorm/lightning/dust storm and strong wind speed reaching 40-50 kmph gusting to 60 kmph towards afternoon to evening. Another spell of very light rain accompanied with thunderstorm/lightning and strong wind speed reaching 40-50 kmph gusting to 60 kmph towards night. The maximum and minimum temperatures over Delhi are likely to be in the range of 37°C to 39°C and 27°C to 29°C, respectively. The minimum temperature will be near normal (-1.5°C to 1.5°C) at many places, and maximum temperature will be below normal (-1.6°C to -3.0°C) at many places over Delhi. The predominant surface wind is likely to be from the northwest direction with wind reaching up to 15 kmph during the morning hours. The surface wind speed will increase becoming up to 20 kmph from west direction during the afternoon. The surface wind speed will increase becoming up to 25 kmph from south direction during the evening and night.

05.06.2026: Generally cloudy sky. A spell of light rain accompanied with thunderstorm/lightning and strong wind speed reaching 40-50 kmph gusting to 60 kmph during morning to forenoon. Another spell of very light rain accompanied with thunderstorm/lightning during evening to night. The maximum and minimum temperatures over Delhi are likely to be in the range of 36°C to 38°C and 27°C to 29°C, respectively. The minimum temperature will be near normal (-1.5°C to 1.5°C) at many places, and the maximum temperature will be below normal (-1.6°C to -3.0°C) at many places over Delhi. The predominant surface wind is likely to be from the west direction with wind reaching up to 20 kmph during the morning hours. The surface wind speed will increase slightly up to 22 kmph from west direction during the afternoon. The surface wind speed will decrease becoming up to 15 kmph from west direction during the evening and night.

Impact expected and Action Suggested due to thunderstorm with lightning/gusty winds:

Thunderstorms accompanied with lightning and gusty winds (50–60 kmph reaching up to 70 kmph) with dust-raising surface winds are likely to occur.

- **Expected Impacts:** Breaking of tree branches and uprooting of large trees, falling of dead tree limbs, Damage to standing crops, Minor to major damage to power and communication lines due to falling branches, Partial damage to vulnerable structures due to strong winds, Loose objects may get blown away
- **Advisory for Public Safety:** Keep a close watch on weather updates and worsening conditions, stay indoors and avoid unnecessary travel, Close windows and doors securely, take shelter in safe places and avoid open areas, do not take shelter under trees, do not lie on concrete floors or lean against concrete walls during lightning activity, unplug electrical and electronic appliances, immediately move out of water bodies, stay away from objects that conduct electricity

Citizens are advised to remain alert and follow safety precautions to avoid any loss of life or property.

Impact expected and action suggested due to isolated thunderstorm with lightning, gusty/squally winds & hailstorm over

- ❖ **Thundersquall (wind speed reaching 50-60 kmph gusting to 70 kmph)** likely over Coastal Andhra Pradesh & Yanam and Telangana during 2nd -4th; Rayalaseema on 2nd & 3rd ; Odisha on 2nd & 3rd ; Jammu-Kashmir, Punjab Haryana Chandigarh & Delhi on 3rd & 4th June; West Rajasthan on 2nd & 3rd; East Rajasthan during 2nd -4th June.

Impact expected:

- Breaking of tree branches, uprooting of large avenue trees. Large dead limbs blown from trees. Damage to Standing crops.
- Minor to Major damage to banana and papaya trees.
- Minor to major damage to power and communication lines due to breaking of branches.
- Strong wind/hail may damage plantation, horticulture and standing crops.
- Partial damage to vulnerable structures due to strong winds.
- Minor damage to kutcha houses/walls and huts.
- Loose objects may fly.

Action suggested:

- People are advised to keep a watch on the weather for worsening conditions and be ready to move to safer places accordingly.
- Stay indoors, close windows & doors and avoid travel if possible.
- Take safe shelters; do not take shelter under trees.
- Do not lie on concrete floors and do not lean against concrete walls.
- Unplug electrical/ electronic appliances.
- Immediately get out of water bodies.
- Keep away from all the objects that conduct electricity.

Impact Expected & Action Suggested due to heavy/very heavy rainfall over

- ❖ **Isolated heavy rainfall** likely over Arunachal Pradesh during 3rd -8th June; Assam & Meghalaya during 5th -8th June.
- ❖ **Isolated heavy rainfall** likely over Tamil Nadu, Puducherry & Karaikal during 2nd -8th; Lakshadweep, South Interior Karnataka and Coastal Karnataka during 2nd -7th ; North Interior Karnataka during 2nd -6th June; with **very heavy rainfall** likely over Kerala & Mahe during 2nd – 8th June.
- ❖ **Isolated heavy rainfall** likely over Sub-Himalayan West Bengal & Sikkim during 4th – 6th June

Impact Expected

- Localized Flooding of roads, water logging in low lying areas and closure of underpasses mainly in urban areas.
- Occasional reduction in visibility due to heavy rainfall.
- Disruption of traffic in major cities due to water logging in roads leading to increased travel time.
- Minor damage to kutcha roads.

- Possibilities of damage to vulnerable structure.
- Localized Landslides/Mudslides/landslips/mudslips/landsinks/mudsinks.
- Damage to horticulture and standing crops in some areas due to inundation.
- It may lead to riverine flooding in some river catchments (for riverine flooding please visit Web page of CWC)

Action Suggested

- Check for traffic congestion on your route before leaving for your destination.
- Follow any traffic advisories that are issued in this regard.
- Avoid going to areas that face the water logging problems often.
- Avoid staying in vulnerable structure.

Agromet advisories for likely impact of Hailstorms

- In **Jammu & Kashmir, Rajasthan, West Madhya Pradesh and Madhya Maharashtra** use hail nets or hail caps in fruit orchards and vegetable plants to protect them from mechanical damage.
- Ensure effective field drainage to prevent waterlogging. Undertake picking of matured fruits at the earliest. Keep the harvested produce in safe places.

Agromet advisories for likely impact of Heavy Rainfall

- In **Arunachal Pradesh**, ensure proper drainage in vegetable, maize, and nursery fields. In WRC paddy, keep drainage channels open to remove excess water from nursery beds. Cover newly sown nursery beds with polythene sheets or straw mulch.
- In **Assam**, undertake harvesting of Boro rice after current spells of heavy rain and store the already harvested produce in a safe place. Cover the rice nursery beds with thin polythene sheet. Ensure proper drainage arrangements for quick removal of excess water from rice nurseries, vegetables, banana, citrus and papaya fields.
- In **Meghalaya**, harvest the mature banana fruits immediately during clear weather. Make necessary arrangements to remove excess rainwater from the maize, ginger, vegetable, banana and other orchard fields crop fields.
- In **Sub Himalayan West Bengal and Sikkim**, undertake harvesting of matured rice & maize after current spells of heavy rains and keep already harvested produce in a safe place. Ensure proper drainage in rice, maize, jute and vegetables. Postpone fresh sowing of okra.
- In **Tamil Nadu**, maintain proper drainage to prevent water stagnation in cotton, rice nurseries, recently sown cumbu and vegetables,
- In **Keralam**, provide adequate drainage for banana, coconut, and other vegetables. Provide support to banana plants.
- In **Lakshadweep**, provide adequate drainage in standing crop fields to prevent waterlogging.
- In **Karnataka**, undertake harvesting of matured rice after current spells of rain, ensure proper drainage in paddy fields, arecanut and mango orchards. Provide staking to tomato plants.

Agromet advisories for likely impact of Thunderstorm / Gusty Winds

- Shift the harvested produce in safer places or cover the produce with tarpaulin sheets in the fields. Tie the harvested crops securely and cover them to minimize the risk of displacement from strong surface winds.
- Provide mechanical support to horticultural crops and staking or support to vegetables and young fruit plants / fruit-bearing plants to avoid lodging due to strong winds.

Livestock / Poultry / Fisheries

- Keep the animals inside the shed during hailstorms/ heavy rainfall and provide them with balanced feed.
- Store feed and fodder in a safe place to prevent spoilage.
- Construct an outlet with proper netting around the ponds to drain excess water, thereby preventing fish from escaping in the event of overflow.

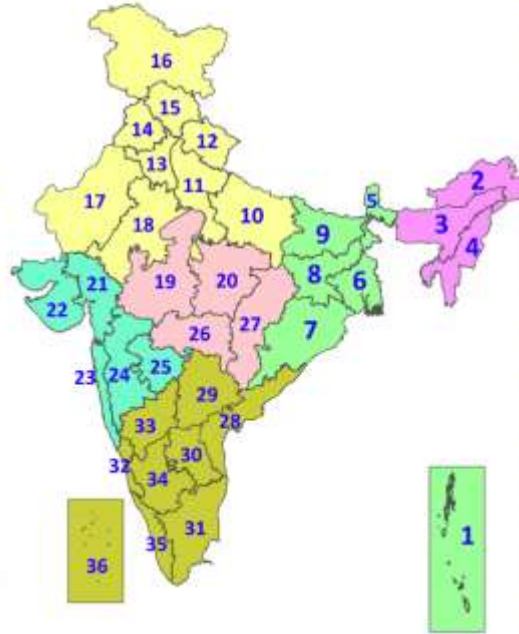
- In regions with high temperatures and heat waves, provide clean, hygienic, and ample drinking water for animals, and cover the roofs of poultry sheds with grass to reduce the adverse effects.

Legends & abbreviations:

- ❖ **Heavy Rain:**64.5115.5mm; **Very Heavy Rain:**115.6204.4mm; **Extremely Heavy Rain:** >204.4mm.
- ❖ **Obsy:** Observatory; Automatic Weather Station; **ARG:** Automatic Rain Gauge; **dist:** District; **NH:** National Highway; **KVK:** Krishi Vigyan Kendra; **DVC:** Damodar Valley Corporation; **PTO:** Part Time Office, **Aero:** Aerodrome, **IAF:** Indian Air Force.
- ❖ **Region wise classification of meteorological Sub-Divisions:**
 - **Northwest India:** Western Himalayan Region (Jammu-Kashmir-Ladakh-Gilgit-Baltistan-Muzaffarabad, Himachal Pradesh and Uttarakhand); Punjab, Haryana Chandigarh & Delhi; West Uttar Pradesh, East Uttar Pradesh, West Rajasthan and East Rajasthan.
 - **Central India:** West Madhya Pradesh, East Madhya Pradesh, Vidarbha and Chhattisgarh.
 - **East India:** Bihar, Jharkhand, Sub-Himalayan West Bengal & Sikkim; Gangetic West Bengal, Odisha and Andaman & Nicobar Islands.
 - **Northeast India:** Arunachal Pradesh, Assam & Meghalaya and Nagaland, Manipur, Mizoram & Tripura.
 - **West India:** Gujarat Region, Saurashtra & Kutch, Coastal Maharashtra (Konkan) & Goa, Madhya Maharashtra and Marathawada.
 - **South India:** Coastal Andhra Pradesh & Yanam, Telangana, Rayalaseema, Coastal Karnataka, North Interior Karnataka, South Interior Karnataka, Kerala & Mahe, Tamil Nadu, Puducherry & Karaikal and Lakshadweep.

LEGENDS

1. अंडमान और निकोबार द्वीपसमूह
2. अरुणाचल प्रदेश
3. असम और मेघालय
4. नागालैंड, मणिपुर, मिजोरम और त्रिपुरा
5. उप-हिमालयी पश्चिम बंगाल और सिक्किम
6. गंगीय पश्चिम बंगाल
7. ओडिशा
8. झारखंड
9. बिहार
10. पूर्वी उत्तर प्रदेश
11. पश्चिम उत्तर प्रदेश
12. उत्तराखंड
13. हरियाणा, चंडीगढ़ और दिल्ली
14. पंजाब
15. हिमाचल प्रदेश
16. जम्मू और कश्मीर और लद्दाख
17. पश्चिम राजस्थान
18. पूर्वी राजस्थान
19. पश्चिम मध्य प्रदेश
20. पूर्वी मध्य प्रदेश
21. गुजरात
22. सौराष्ट्र
23. कोंकण और गोवा
24. मध्य महाराष्ट्र
25. मराठवाड़ा
26. विदर्भ
27. छत्तीसगढ़
28. तटीय आंध्र प्रदेश और यनम
29. तेलंगाना
30. रायलसीमा
31. तमिलनाडु, पुडुचेरी और कराईकल
32. तटीय कर्नाटक
33. आंतरिक उत्तरी कर्नाटक
34. आंतरिक दक्षिणी कर्नाटक
35. केरल और माहे
36. लक्षद्वीप



1. Andaman & Nicobar Islands
2. Arunachal Pradesh
3. Assam & Meghalaya
4. Nagaland, Manipur, Mizoram & Tripura
5. Sub-Himalayan West Bengal & Sikkim
6. Gangetic West Bengal
7. Odisha
8. Jharkhand
9. Bihar
10. East Uttar Pradesh
11. West Uttar Pradesh
12. Uttarakhand
13. Haryana, Chandigarh & Delhi
14. Punjab
15. Himachal Pradesh
16. Jammu & Kashmir and Ladakh
17. West Rajasthan
18. East Rajasthan
19. West Madhya Pradesh
20. East Madhya Pradesh
21. Gujarat
22. Saurashtra
23. Konkan & Goa
24. Madhya Maharashtra
25. Marathwada
26. Vidarbha
27. Chhattisgarh
28. Coastal Andhra Pradesh & Yanam
29. Telangana
30. Rayalaseema
31. Tamilnadu, Puducherry & Karaikal
32. Coastal Karnataka
33. North Interior Karnataka
34. South Interior Karnataka
35. Kerala & Mahe
36. Lakshadweep

SPATIAL DISTRIBUTION (% of Stations reporting)

% Stations	Category	% Stations	Category
76-100	Widespread (WS/Most Places)	26-50	Scattered (SCT/A Few Places)
51-75	Fairly Widespread (FWS/Many Places)	1-25	Isolated (ISOL)

- | | | |
|----------------------|----------------------|--------------|
| Fog | Heavy Snow | Cold Wave |
| Heavy Rain | Dust Storm | Cold Day |
| Very Heavy Rain | Heat Wave | Ground Frost |
| Extremely Heavy Rain | Warm Night | |
| Thunder & Lightning | Hot Day | |
| Hailstorm | Hot & Humid | |
| Dust Raising Winds | Strong Surface Winds | |

COLOUR CODED WARNING

No Warning (No Action)
Watch (Be Aware)
Alert (Be Prepared To Take Action)
Warning (Take Action)

Probabilistic Forecast

Terms	Probability of Occurrence (%)
Unlikely	< 25
Likely	25 - 50
Very Likely	50 - 75
Most Likely	> 75

* Red colour warning does not mean "Red Alert", Red colour warning means "Take Action".
Forecast and Warning for any day is valid from 0830 hours IST of day till 0830 hours IST of next day.
For more details, kindly visit <https://mausam.imd.gov.in> or contact: 011-2434-4599
(Service to the Nation since 1875)

DEFINITION/CRITERIA

Rain/ Snow *	<p>Heavy: 64.5 to 115.5 mm/cm *</p> <p>Very Heavy: 115.6 to 204.4 mm/cm*</p> <p>Extremely Heavy: > 204.4 mm/cm *</p>
Heat Wave	<p>When maximum temperature of a station reaches $\geq 40^{\circ}\text{C}$ for plains and $\geq 30^{\circ}\text{C}$ for hilly regions</p> <p>(a) Based on Departure from normal</p> <p>Heat Wave: Maximum Temperature Departure from normal 4.5°C to 6.4°C.</p> <p>Severe Heat Wave: Maximum Temperature Departure from normal $\geq 6.5^{\circ}\text{C}$</p> <p>(b). Based on Actual maximum temperature</p> <p>Heat Wave: When actual maximum temperature $\geq 45^{\circ}\text{C}$.</p> <p>Severe Heat Wave: When actual maximum temperature $\geq 47^{\circ}\text{C}$</p> <p>(c). Criteria for heat wave for coastal stations</p> <p>When maximum temperature departure is $> 4.5^{\circ}\text{C}$ from normal. Heat Wave may be described provided maximum temperature $\geq 37^{\circ}\text{C}$</p>
Warm Night	<p>When maximum temperature remains 40°C</p> <p>Warm Night: When minimum temperature departure 4.5°C to 6.4°C.</p> <p>Severe Warm Night: When minimum temperature departure $> 6.4^{\circ}\text{C}$.</p>
Cold Wave	<p>When minimum temperature of a station $\leq 10^{\circ}\text{C}$ for plains and $\leq 0^{\circ}\text{C}$ for hilly regions.</p> <p>(a). Based on departure</p> <p>Cold Wave: Minimum Temperature Departure from normal -4.5°C to -6.4°C.</p> <p>Severe Cold Wave: Minimum Temperature Departure from normal $\leq -6.5^{\circ}\text{C}$</p> <p>(b) Based on actual Minimum Temperature (for Plains only)</p> <p>Cold Wave : When Minimum Temperature is $\leq 4.0^{\circ}\text{C}$</p> <p>Severe Cold Wave: When Minimum Temperature is $\leq 2.0^{\circ}\text{C}$</p> <p>(c) For Coastal Stations</p> <p>When Minimum Temperature departure is $\leq -4.5^{\circ}\text{C}$ & actual Minimum Temperature is $\leq 15^{\circ}\text{C}$</p>
Cold Day	<p>When minimum temperature of a station $\leq 10^{\circ}\text{C}$ for plains and $\leq 0^{\circ}\text{C}$ for hilly regions</p> <p>Based on departure</p> <p>Cold Day: Maximum Temperature Departure from normal -4.5°C to -6.4°C.</p> <p>Severe Cold Day: Maximum Temperature Departure from normal $\leq -6.5^{\circ}\text{C}$</p>
Fog	<p>Phenomenon of small droplets suspended in air and the horizontal visibility $< 1\text{km}$</p> <p>Moderate Fog: When the visibility between 500-200 metres</p> <p>Dense Fog: when the visibility between 50- 200 metres</p> <p>Very Dense Fog: when the visibility < 50 metres</p>
Thunderstorm	<p>Sudden electrical discharges manifested by a flash of light (Lightning) and a sharp rumbling sound (thunder)</p>
Dust/Sand Storm	<p>An ensemble of particles of dust or sand energetically lifted to great heights by a strong and turbulent wind.</p>
Frost	<p>Ice deposits on ground</p> <p>Air temperature $\leq 4^{\circ}\text{C}$ (over Plains)</p>
Squall	<p>A strong wind that rises suddenly, lasts for atleast 1 minute.</p> <p>Moderate: Wind speed 52-61 kmph</p> <p>Severe: Wind speed 62-67 kmph</p> <p>Very Severe: Wind speed > 67 kmph</p>
Sea State	<p>Effect of various waves in the sea over specific area</p> <p>Rough to very rough: Wind speed 41-62 kmph (22-33 knots) & Wave height 2.5-6 metre</p> <p>High to very high: Wind speed 63-117 kmph (34-63 knots) & Wave height 6-14 metre</p> <p>Phenomenal: Wind speed > 117 kmph (> 63 knots) & Wave height > 14 metre</p>
Cyclone	<p>Cyclonic Storm: Wind speed 62-87 kmph (34-47 knots)</p> <p>Severe Cyclonic Storm: Wind speed 88-117 kmph (48-63 knots)</p> <p>Very Severe Cyclonic Storm: Wind speed 118-165 kmph (64 - 89 knots)</p> <p>Extremely Severe Cyclonic Storm: Wind speed 166-220 kmph (90 -119 knots)</p> <p>Super Cyclone Storm: Wind speed > 220 kmph (> 119 knots)</p>

* Red colour warning does not mean "Red Alert", Red colour warning means "Take Action".
Forecast and Warning for any day is valid from 0830 hours IST of day till 0830 hours IST of next day.
For more details, kindly visit <https://mausam.imd.gov.in> or contact: 011-2434-4599
(Service to the Nation since 1875)