



Government of India  
Ministry of Earth Sciences  
India Meteorological Department



Press Release

Date: 11<sup>th</sup> July 2026

Time of Issue: 1315 hours IST

**Subject: (i) Isolated heavy to very heavy rainfall likely over northeast India, Sub-Himalayan West Bengal & Sikkim, Bihar and East Uttar Pradesh on 11<sup>th</sup> & 12<sup>th</sup> and isolated heavy falls for subsequent 3-4 days. Isolated extremely heavy rainfall also likely over Meghalaya on today, the 11<sup>th</sup> July, 2026.**

**(ii) Subdued rainfall activity likely over the plains of northwest, westcentral and over south Peninsular India during next 6-7 days.**

**Realised weather during past 24 hours ending at 0830 hours IST of today, the 11<sup>th</sup> July, 2026:**

- ❖ **Very Heavy rainfall (12-20 cm)** has been recorded over Himachal Pradesh, Uttarakhand, East Uttar Pradesh and Meghalaya.
- ❖ **Heavy rainfall (7-11 cm)** has been recorded over Gangetic West Bengal, Odisha, Jharkhand, Bihar, Punjab, Haryana, West Uttar Pradesh, Mizoram, Tamil Nadu and Kerala.
- ❖ **Thunderstorm accompanied with Squally/Gusty winds with speed reaching 60-80 kmph** Punjab, West Madhya Pradesh **with speed reaching 40-60 kmph** at isolated places over Andaman & Nicobar Islands, Gangetic West Bengal, Odisha, Bihar, Jharkhand, Haryana, Uttar Pradesh, East Rajasthan, East Madhya Pradesh, Vidarbha, Gujarat Region and Kutch.

**Weather Systems, Forecast and Warnings (Annexure I & II):**

- ❖ The western end of the **Monsoon trough** at mean sea level is near its normal position and its eastern end is north of its normal position.
- ❖ A **Western Disturbance** as cyclonic circulation lies over Northeast Punjab & neighbourhood in middle tropospheric level.
- ❖ An **upper air cyclonic circulation** lies over the East Uttar Pradesh in middle tropospheric level.
- ❖ An **upper air cyclonic circulation** lies over north Bangladesh & neighbourhood in lower tropospheric level.
- ❖ A **trough** runs from Northwest Bihar to Manipur across in lower tropospheric level.
- ❖ An **upper air cyclonic circulation** lies over Northwest Bihar & neighbourhood in lower tropospheric level.

**Under the influence of above systems, the following weather is likely:**

**Northwest India:**

- ❖ **Fairly Widespread to Widespread** rainfall likely over Jammu-Kashmir-Ladakh-Gilgit-Baltistan-Muzaffarabad during 11th-12th July; Himachal Pradesh during 11th-15th July; Uttarakhand during 11th-17th July.
- ❖ **Fairly Widespread to Widespread** rainfall likely over East Uttar Pradesh on 11th July.
- ❖ **Isolated to Scattered** rainfall likely over Jammu-Kashmir-Ladakh-Gilgit-Baltistan-Muzaffarabad during 13th-17th July; Himachal Pradesh during 16th-17th July.
- ❖ **Isolated to Scattered** rainfall likely over East Rajasthan, Haryana Chandigarh & Delhi, Punjab, West Rajasthan and West Uttar Pradesh during 11th-17th July; East Uttar Pradesh during 12th-17th July.
- ❖ Isolated **thunderstorm, lightning & gusty winds (speed reaching 40-50 kmph gusting to 60 kmph)** likely over Jammu-Kashmir-Ladakh-Gilgit-Baltistan-Muzaffarabad during 11th-17th July.
- ❖ Isolated **thunderstorm & lightning** likely over Uttarakhand during 11th-17th July.
- ❖ Isolated **heavy rainfall** likely over Haryana Chandigarh & Delhi, Jammu-Kashmir-Ladakh-Gilgit-Baltistan-Muzaffarabad and Punjab during 11th-12th July; Himachal Pradesh during 11th-14th July; Uttarakhand during 11th-17th July; East Uttar Pradesh during 12th-15th July with isolated **very heavy rainfall** also likely over East Uttar Pradesh on 11th July.

**Central India:**

- ❖ **Isolated to Scattered** rainfall likely over East Madhya Pradesh, Vidarbha and West Madhya Pradesh during 11th-17th July; Chhattisgarh during 11th-13th July.
- ❖ **Fairly Widespread to Widespread** rainfall likely over Chhattisgarh during 14th-17th July.
- ❖ Isolated **thunderstorm, lightning & gusty winds (speed reaching 40-50 kmph gusting to 60 kmph)** likely over East Madhya Pradesh during 11th-14th July; Vidarbha during 13th-15th July, **with gusty winds (speed reaching 30-40 kmph gusting to 50 kmph)** likely over West Madhya Pradesh during 11th-14th July.

- ❖ Isolated **heavy rainfall** likely over East Madhya Pradesh during 14th-17th July; Chhattisgarh during 11th-15th July.

#### East India:

- ❖ **Fairly Widespread to Widespread** rainfall likely over Andaman & Nicobar Islands during 11th-15th July; Gangetic West Bengal, Jharkhand and Sub-Himalayan West Bengal & Sikkim during 11th-17th July; Bihar during 11th-13th July; Odisha during 13th-17th July.
- ❖ **Isolated to Scattered** rainfall likely over Andaman & Nicobar Islands during 16th-17th July; Bihar during 14th-17th July; Odisha during 11th-12th July.
- ❖ Isolated **thunderstorm, lightning & gusty winds (speed reaching 40-50 kmph gusting to 60 kmph)** likely over Andaman & Nicobar Islands during 11th-15th July; Jharkhand during 11th-12th July, **with gusty winds (speed reaching 30-40 kmph gusting to 50 kmph)** likely over Gangetic West Bengal during 11th-13th July; Odisha during 11th-15th July.
- ❖ Isolated **thunderstorm & lightning** likely over Andaman & Nicobar Islands during 16th-17th July; Bihar and Sub-Himalayan West Bengal & Sikkim during 11th-15th July; Jharkhand during 13th-15th July.
- ❖ Isolated **heavy rainfall** likely over Sub-Himalayan West Bengal & Sikkim during 13th-14th July and on 17th July; Gangetic West Bengal during 11th-13th July and during 16th-17th July; Jharkhand during 12th-14th July; Bihar during 13th-15th July; Odisha during 11th-15th July with isolated **very heavy rainfall** also likely over Bihar and Sub-Himalayan West Bengal & Sikkim during 11th-12th July.

#### Northeast India:

- ❖ **Fairly Widespread to Widespread** rainfall likely over Arunachal Pradesh, Assam & Meghalaya and Nagaland, Manipur, Mizoram & Tripura during 11th-17th July.
- ❖ Isolated **thunderstorm & lightning** likely over Arunachal Pradesh, Assam & Meghalaya and Nagaland, Manipur, Mizoram & Tripura during 11th-15th July.
- ❖ Isolated **heavy rainfall** likely over Arunachal Pradesh and Nagaland, Manipur, Mizoram & Tripura during 11th-17th July; Assam & Meghalaya on 11th July and during 13th-17th July with isolated **very heavy rainfall** also likely over Assam & Meghalaya on 12th July.
- ❖ **Isolated heavy to very heavy rainfall with extremely heavy rainfall likely over Meghalaya on 11<sup>th</sup> July.**

#### West India:

- ❖ **Fairly Widespread to Widespread** rainfall likely over Konkan & Goa during 11th-17th July.
- ❖ **Isolated to Scattered** rainfall likely over Gujarat Region, Madhya Maharashtra, Marathawada and Saurashtra & Kutch during 11th-17th July.

#### South Peninsular India:

- ❖ **Isolated to Scattered** rainfall likely over Coastal Andhra Pradesh & Yanam, South Interior Karnataka, Tamil Nadu, Puducherry & Karaikal and Telangana during 11th-17th July; Kerala & Mahe during 12th-17th July; Lakshadweep and North Interior Karnataka during 11th-12th July and during 16th-17th July; Rayalaseema on 11th July and during 15th-17th July.
- ❖ **Fairly Widespread to Widespread** rainfall likely over Kerala & Mahe on 11th July; Coastal Karnataka during 11th-17th July.
- ❖ Isolated **thunderstorm, lightning & gusty winds (speed reaching 40-50 kmph gusting to 60 kmph)** likely over Tamil Nadu, Puducherry & Karaikal on 11th July.
- ❖ Isolated **thunderstorm & lightning** likely over Coastal Karnataka, Kerala & Mahe, Lakshadweep, North Interior Karnataka and South Interior Karnataka on 11th July.

#### Heat Wave conditions warning:

- ❖ **Heat wave** conditions very likely in isolated pockets over Coastal Andhra Pradesh & Yanam during 11th-12th July.

#### Fishermen Warning:

- ❖ Arabian Sea: Along and off Somalia, Oman, over most parts of west central adjoining east central, north and some parts of south west Arabian Sea during 11<sup>th</sup> to 16<sup>th</sup> July; along and off north North Gujarat during 11<sup>th</sup> to 13<sup>th</sup> July, and North Karnataka and Comorian area on, 11<sup>th</sup> July.
- ❖ Bay of Bengal: Along and off Gangetic West Bengal and most parts of north east and few parts of north west adjoining east & west central Bay of Bengal on 11<sup>th</sup> July, over many parts of east central adjoining few parts of west central and north Bay of Bengal on 12<sup>th</sup> July; over Andaman Sea during 12<sup>th</sup> to 15<sup>th</sup> July; over some parts of west central and few parts of south Bay of Bengal during 12<sup>th</sup> to 13<sup>th</sup> July.

#### Weather conditions and forecast over Delhi/NCR during next 4 days (Annexure III)

For more details, kindly refer National Weather Bulletin:

[https://mausam.imd.gov.in/responsive/all\\_india\\_forecast\\_bulletin.php](https://mausam.imd.gov.in/responsive/all_india_forecast_bulletin.php)

For District wise warnings refer: <https://mausam.imd.gov.in/responsive/districtWiseWarningGIS.php>

For Fishermen warning refer <https://rsmcnewdelhi.imd.gov.in/fishermenwarning.php>

**Significant rainfall recorded (in cm) (from 0830 hours IST of yesterday to 0830 hours IST of today):**

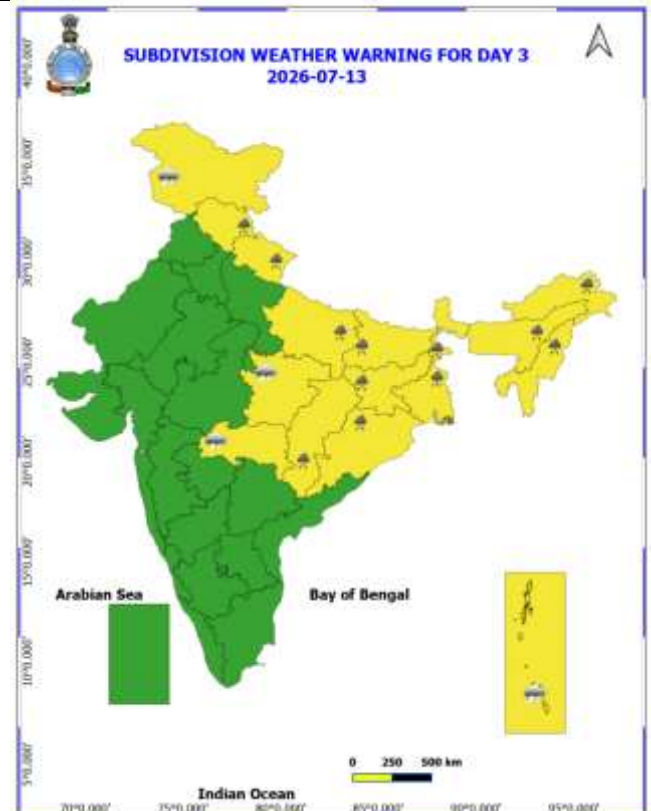
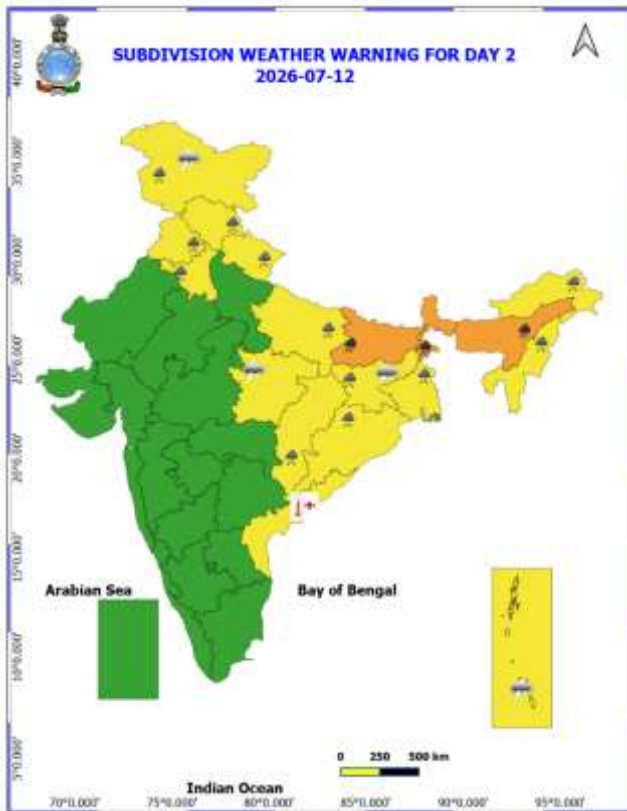
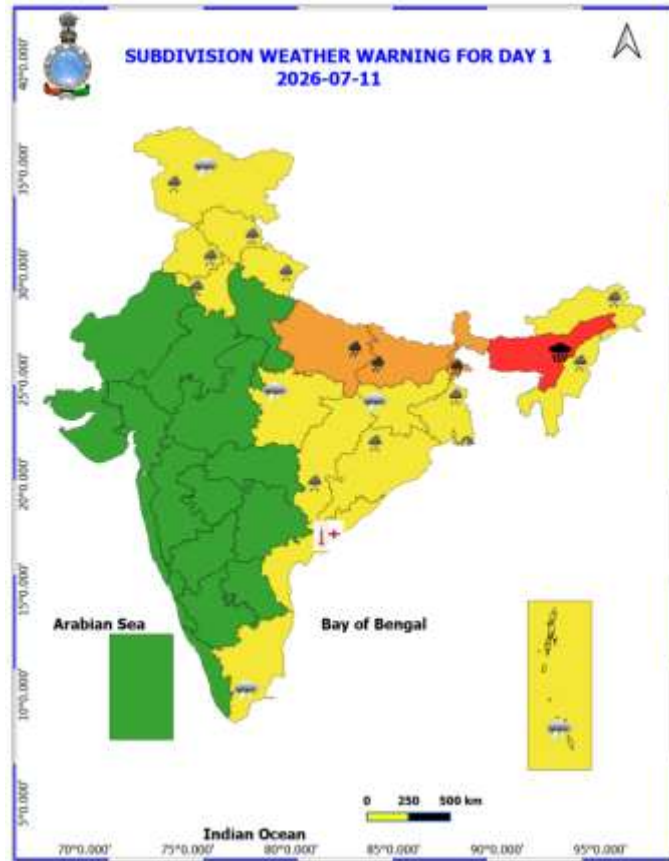
- ❖ **Meghalaya:** RKM Sohra 19;
- ❖ **Himachal Pradesh:** Nahan 16;
- ❖ **East Uttar Pradesh:** Fatehpur Tehsil (Barabanki) 16;
- ❖ **Uttarakhand:** Keertinagar 14;
- ❖ **Bihar:** Patna 10;
- ❖ **West Uttar Pradesh:** Nakur (Saharanpur)10;
- ❖ **Odisha:** Khurdha 9;
- ❖ **Jharkhand:** Jamtara Dvc 9;
- ❖ **Gangetic West Bengal:** Mankar 8;
- ❖ **Mizoram:** Chawnhu(AWS) 8;
- ❖ **Punjab:** Raikot Arg(Ldn) 7;
- ❖ **Haryana:** Bilaspur(Ymn) 7;
- ❖ **Tamil Nadu:** Keelpennathur (dist Tiruvannamalai), Karaikudi (dist Sivagangai), Kuppanatham (dist Cuddalore) 7 each;
- ❖ **Kerala:** Palode (dist Thiruvananthapuram) 7.

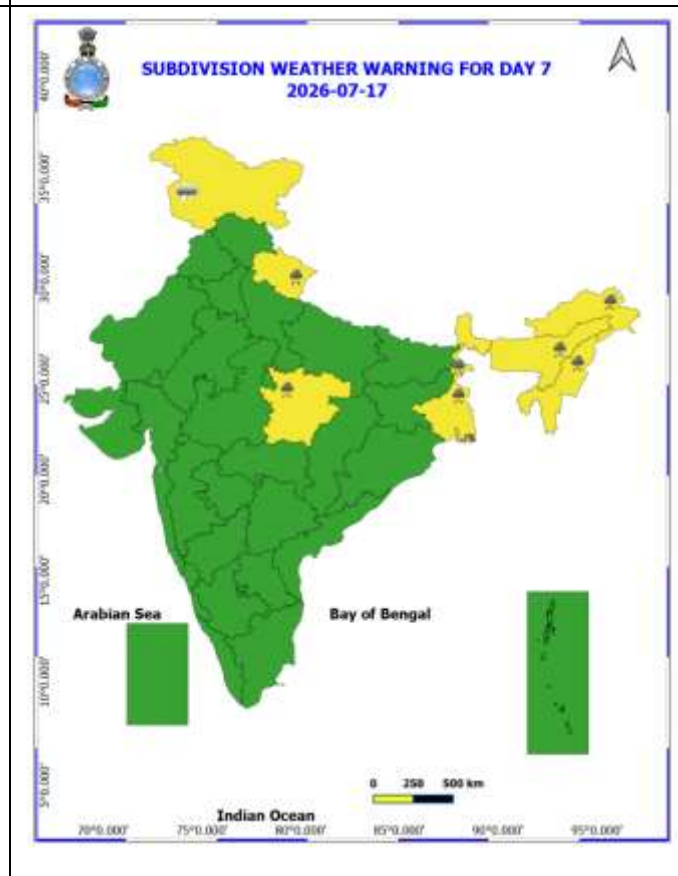
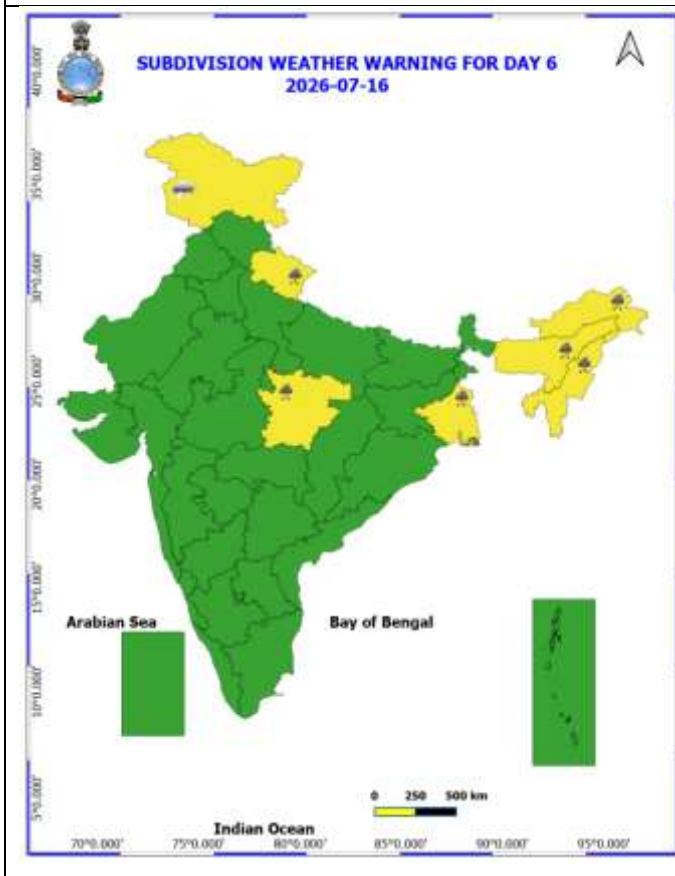
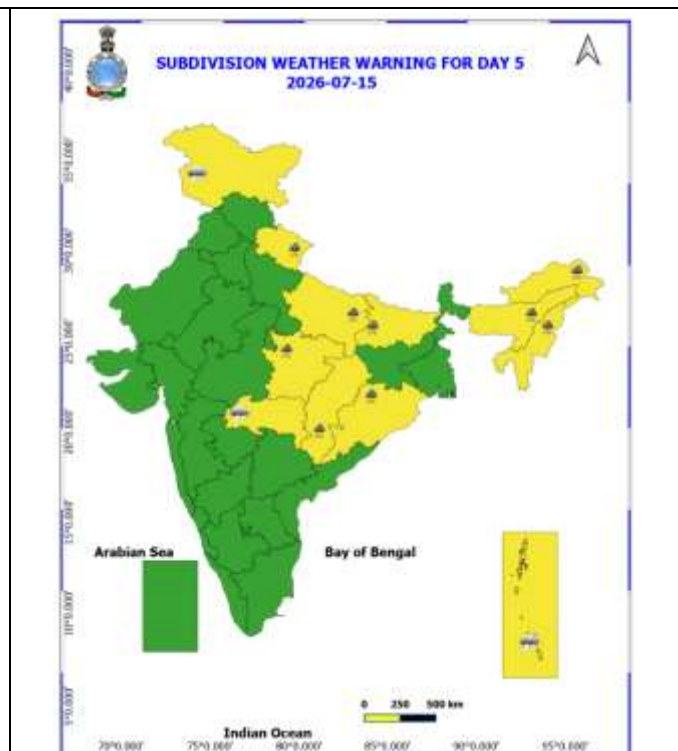
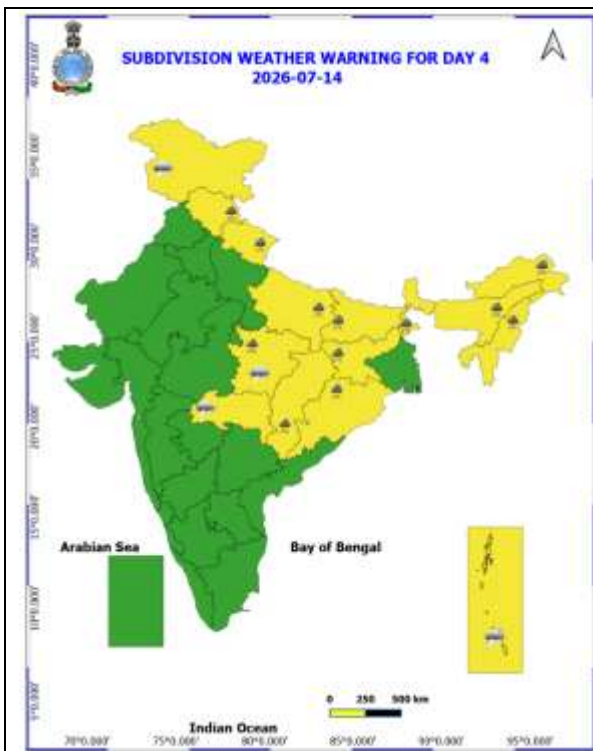
**Gusty winds (in  $\geq 40$  kmph) (from 0830 hours IST of yesterday to 0830 hours IST of today):**

- ❖ **West Madhya Pradesh:** Morena\_76, Gwalior\_59, Indore\_52, Sehore\_44;
- ❖ **Punjab:** Fazilka - 61; Ludhiana - 59; Faridkot - 52; Muktsar - 44;
- ❖ **Kutch:** Khavda 56;
- ❖ **Andaman & Nicobar Islands:** Sri Vijayapuram - 52;
- ❖ **East Rajasthan:** Ajmer - 48; Sirohi - 41;
- ❖ **Gujarat Region:** Patan - 48;
- ❖ **Jharkhand:** Simdega - 46;
- ❖ **East Madhya Pradesh:** Jabalpur\_46, Rewa\_41;
- ❖ **Haryana:** Sirsa - 44; Karnal - 41;
- ❖ **Odisha:** Puri - 43;
- ❖ **Bihar:** Patna - 43;
- ❖ **Vidarbha:** Wardha - 43;
- ❖ **Gangetic West Bengal:** Hooghly - 41
- ❖ **West Uttar Pradesh:** Etawah(AWS) & Agra(IAF) - 41;
- ❖ **East Uttar Pradesh:** Mirzapur(AWS) - 41.

| Table-1                  |  |         |         |         |         |         |         |         |
|--------------------------|--|---------|---------|---------|---------|---------|---------|---------|
| 7 Days Rainfall Forecast |  |         |         |         |         |         |         |         |
| S.No.                    | Subdivision                            | 11- Jul | 12- Jul | 13- Jul | 14- Jul | 15- Jul | 16- Jul | 17- Jul |
|                          |  | Day 1   | Day 2   | Day 3   | Day 4   | Day 5   | Day 6   | Day 7   |
| 1                        | ANDAMAN & NICOBAR ISLANDS              | FWS     | FWS     | FWS     | FWS     | FWS     | SCT     | SCT     |
| 2                        | ARUNACHAL PRADESH                      | FWS     | FWS     | FWS     | FWS     | FWS     | FWS     | FWS     |
| 3                        | ASSAM & MEHGHALAYA                     | WS      | FWS     | FWS     | FWS     | FWS     | FWS     | FWS     |
| 4                        | NAGALAND, MANIPUR, MIZORAM AND TRIPURA | WS      | WS      | FWS     | FWS     | FWS     | FWS     | FWS     |
| 5                        | SUB HIMALAYAN WEST BENGAL & SIKKIM     | WS      | WS      | WS      | WS      | WS      | WS      | WS      |
| 6                        | GANGETIC WEST BENGAL                   | WS      | WS      | WS      | WS      | FWS     | FWS     | WS      |
| 7                        | ODISHA                                 | SCT     | SCT     | FWS     | FWS     | FWS     | FWS     | FWS     |
| 8                        | JHARKHAND                              | FWS     | FWS     | WS      | WS      | FWS     | FWS     | FWS     |
| 9                        | BIHAR                                  | WS      | FWS     | FWS     | SCT     | SCT     | SCT     | SCT     |
| 10                       | EAST UTTAR PRADESH                     | FWS     | SCT     | SCT     | SCT     | SCT     | SCT     | SCT     |
| 11                       | WEST UTTAR PRADESH                     | SCT     | ISOL    | ISOL    | ISOL    | ISOL    | ISOL    | ISOL    |
| 12                       | UTTARAKHAND                            | WS      | FWS     | FWS     | FWS     | FWS     | FWS     | FWS     |
| 13                       | HARYANA, CHANDIGARH & DELHI            | SCT     | SCT     | SCT     | ISOL    | ISOL    | ISOL    | ISOL    |
| 14                       | PUNJAB                                 | SCT     | SCT     | SCT     | ISOL    | ISOL    | ISOL    | ISOL    |
| 15                       | HIMACHAL PRADESH                       | WS      | WS      | FWS     | FWS     | FWS     | SCT     | SCT     |
| 16                       | JAMMU AND KASHMIR AND LADAKH           | WS      | WS      | SCT     | SCT     | SCT     | SCT     | SCT     |
| 17                       | WEST RAJASTHAN                         | ISOL    | ISOL    | ISOL    | ISOL    | ISOL    | ISOL    | ISOL    |
| 18                       | EAST RAJASTHAN                         | ISOL    | ISOL    | ISOL    | ISOL    | ISOL    | ISOL    | ISOL    |
| 19                       | WEST MADHYA PRADESH                    | ISOL    | ISOL    | ISOL    | ISOL    | ISOL    | ISOL    | ISOL    |
| 20                       | EAST MADHYA PRADESH                    | ISOL    | ISOL    | ISOL    | SCT     | SCT     | SCT     | SCT     |
| 21                       | GUJRAT REGION                          | ISOL    | ISOL    | ISOL    | ISOL    | ISOL    | ISOL    | ISOL    |
| 22                       | SAURASHTRA & KUTCH                     | ISOL    | ISOL    | ISOL    | ISOL    | ISOL    | ISOL    | ISOL    |
| 23                       | KONKAN & GOA                           | FWS     | FWS     | FWS     | WS      | WS      | WS      | WS      |
| 24                       | MADHYA MAHARASHTRA                     | ISOL    | ISOL    | ISOL    | ISOL    | ISOL    | ISOL    | ISOL    |
| 25                       | MARATHWADA                             | ISOL    | ISOL    | ISOL    | ISOL    | ISOL    | ISOL    | ISOL    |
| 26                       | VIDARBHA                               | ISOL    | ISOL    | SCT     | SCT     | SCT     | ISOL    | ISOL    |
| 27                       | CHHATTISGARH                           | SCT     | SCT     | SCT     | FWS     | FWS     | FWS     | FWS     |
| 28                       | COASTAL ANDHRA PRADESH                 | ISOL    | ISOL    | ISOL    | ISOL    | ISOL    | ISOL    | ISOL    |
| 29                       | TELANGANA                              | ISOL    | ISOL    | ISOL    | ISOL    | ISOL    | SCT     | SCT     |
| 30                       | RAYALASEEMA                            | ISOL    | DRY     | DRY     | DRY     | ISOL    | ISOL    | ISOL    |
| 31                       | TAMILNADU & PUDUCHERRY                 | ISOL    | ISOL    | ISOL    | ISOL    | ISOL    | ISOL    | ISOL    |
| 32                       | COSTAL KARNATAKA                       | WS      | WS      | FWS     | FWS     | FWS     | FWS     | FWS     |
| 33                       | NORTH INTERIOR KARNATAKA               | ISOL    | ISOL    | DRY     | DRY     | DRY     | ISOL    | ISOL    |
| 34                       | SOUTH INTERIOR KARNATAKA               | SCT     | ISOL    | ISOL    | ISOL    | ISOL    | ISOL    | ISOL    |
| 35                       | KERALA AND MAHE                        | FWS     | SCT     | SCT     | SCT     | SCT     | SCT     | SCT     |
| 36                       | LAKSHADWEEP                            | SCT     | SCT     | DRY     | DRY     | DRY     | SCT     | SCT     |

- As the lead period increases forecast accuracy decrease.





- Action may be taken based on ORANGE AND REDCOLOUR warnings.
- Vulnerable regions likely urban and hilly areas action may be initiated for heavy rainfall warning.
- As the lead period increases forecast accuracy decreases.

Detailed district-wise Multi-Hazard weather warning for next five days available at <https://mausam.imd.gov.in/responsive/districtWiseWarningGIS.php>

## Weather forecast over Delhi/NCR during 11<sup>th</sup> to 14<sup>th</sup> July 2026

### Past Weather:

There has been rise in maximum temperatures by 4-5°C and no significant change in minimum temperatures over Delhi during past 24 hours. The maximum temperatures were about 33°C and the minimum temperatures are in the range 23-27°C respectively during past 24 hours over Delhi. The minimum temperatures are below normal (-1.6°C to -3.0°C) at few places and normal (-1.5°C to 1.5°C) over remaining parts of Delhi. The maximum temperatures were below normal (-1.6°C to -3.0°C) at most places and normal (-1.5°C to 1.5°C) at remaining parts of Delhi. Generally cloudy sky with surface wind speed 20 kmph from the northwest direction prevailed over Delhi during past 24 hours. Very light rain occurred at a few places over Delhi during past 24 hours. Partly cloudy sky with surface wind speeds up to 20 kmph likely to prevailed from the west direction over the region in the forenoon today.

### Weather Forecast:

**11.07.2026:** Partly cloudy sky. Possibility of a spell of very light to light rain/thunderstorm/lightning towards evening/night. The maximum temperatures over Delhi are likely to be in the range of 35-37°C. The maximum temperatures will be above normal (1.6°C to 3.0°C) at most places over Delhi. The predominant surface wind is likely to be from the southwest direction with surface wind speed reaching up to 15 kmph during the afternoon hours. The wind speed will increase becoming up to 25 kmph from the southwest direction during evening and night.

**12.07.2026:** Partly cloudy sky. The maximum and minimum temperatures over Delhi are likely to be in the range of 37°C to 39°C and 26°C to 28°C, respectively. The minimum temperature will be normal (-1.5°C to 1.5°C) at most places, and the maximum temperatures will be above normal (1.6°C to 3.0°C) at most places over Delhi. The predominant surface wind is likely to be from southwest direction with surface wind speed reaching up to 15 kmph during the morning hours. The wind speed will increase becoming up to 18 kmph from the southwest direction during the afternoon. The wind speed will decrease becoming up to 15 kmph from the southwest direction during evening and night.

**13.07.2026:** Partly cloudy sky. The maximum and minimum temperatures over Delhi are likely to be in the range of 36°C to 38°C and 28°C to 30°C, respectively. The minimum temperature will be above normal (1.6°C to 3.0°C) at most places and the maximum temperatures will be above normal (1.6°C to 3.0°C) at most places over Delhi. The predominant surface wind is likely to be from west direction with surface wind speed reaching up to 15 kmph during the morning hours. The wind speed will increase becoming up to 20 kmph from the west direction during the afternoon. The wind speed will increase becoming up to 25 kmph from the west direction during evening and night.

**14.07.2026:** Generally cloudy sky. Possibility of a spell of very light to light rain/thunderstorm/lightning towards evening/night. The maximum and minimum temperatures over Delhi are likely to be in the range of 37°C to 39°C and 27°C to 29°C, respectively. The minimum temperature will be above normal (1.6°C to 3.0°C) at most places and maximum temperatures will be near above normal (1.6°C to 3.0°C) at most places over Delhi. The predominant surface wind is likely to be from the west direction with wind reaching up to 20 kmph during the morning hours. The surface wind speed will decrease becoming up to 15 kmph from the west direction during the afternoon. The wind speed will increase becoming up to 20 kmph from the west direction during evening and night.

### Impact Expected & Action Suggested due to heavy/very heavy/extremely heavy rainfall

- ❖ Isolated heavy to very heavy rainfall with extremely heavy rainfall likely over Meghalaya on 11<sup>th</sup> July.
- ❖ Isolated very heavy rainfall likely over East Uttar Pradesh on 11<sup>th</sup> July; Bihar and Sub-Himalayan West Bengal & Sikkim during 11<sup>th</sup>-12<sup>th</sup> July; Assam & Meghalaya on 12<sup>th</sup> July.

#### Impact Expected

- Localized Flooding of roads, water logging in low lying areas and closure of underpasses mainly in urban areas.
- Occasional reduction in visibility due to heavy rainfall.
- Disruption of traffic in major cities due to water logging in roads leading to increased travel time.
- Minor damage to kutcha roads.
- Possibilities of damage to vulnerable structure.
- Localized Landslides/Mudslides/landslips/mudslips/landsinks/mudsinks.
- Damage to horticulture and standing crops in some areas due to inundation.
- It may lead to riverine flooding in some river catchments (for riverine flooding please visit Web page of CWC)

#### Action Suggested

- Check for traffic congestion on your route before leaving for your destination.
- Follow any traffic advisories that are issued in this regard.

- Avoid going to areas that face the water logging problems often.
- Avoid staying in vulnerable structure.

#### **Agromet advisories for likely impact of Heavy Rainfall**

- In **Jammu & Kashmir**, make arrangements to drain out excess rainwater from rice nursery and fields of maize and green gram.
- In **Bihar**, postpone irrigation in standing crops and apply fertilizers and pesticides only when the sky is clear. Ensure proper drainage in crop fields prone to waterlogging to prevent crop damage due to excess rainfall.
- In **West Bengal**, maintain proper drainage in rice and finger millet nurseries as well as ginger, tomato, brinjal, Dalley khorsani and other vegetable fields to prevent waterlogging. Drain out excess water from the crop fields. Harvest all the matured crops and vegetables. Harvest mature tea leaves and vegetables during rain. Inspect and strengthen bunds around rice nurseries to prevent flooding and maintain adequate drainage.
- In **Uttarakhand**, delay sowing of groundnut, soybean and maize till the weather improves. Maintain proper drainage channels in already sown fields of groundnut, soybean, maize, tomato and chilli.
- In **Punjab**, make arrangements for removal of excess water from cotton and maize fields.
- In **Haryana**, drain out the standing water from cotton fields immediate after excess rain.
- In **Himachal Pradesh**, prioritize good drainage in crop fields of cucurbits, tomato, capsicum and maize fields to avoid waterlogging.
- In **Arunachal Pradesh**, Drain out excess water from crops (rice, maize, soybean, finger millet). Where large gaps have formed due to crop loss, carry out gap filling where feasible; otherwise, plan suitable short-duration contingency crops after the rains subside.
- In **Assam**, Ensure proper drainage to drain out excess rain water from the fields of sugarcane, soybean, pigeon pea, jute & sesame and fruit orchards.
- In **Meghalaya**, Ensure proper drainage field channels around the rice nursery beds and field of maize, cow pea, okra and ginger crop. Strengthen nursery bunds to prevent runoff and seedling washout.
- In **Uttar Pradesh**, ensure proper drainage in fields of rice, maize, sesame and vegetables.
- In the regions expecting heavy rainfall, including **Chattisgarh and Odisha** withhold irrigation in standing crops, make necessary arrangements to remove excess rain water from the crop fields.

#### **Agromet advisories for likely impact of High temperatures/ Heat Waves**

- In **Coastal Andhra Pradesh**, provide light irrigation to maintain adequate moisture in standing crops

#### **Agromet advisories for likely impact of Thunderstorm / Gusty Winds**

- Shift the harvested produce in safer places or cover the produce with tarpaulin sheets in the fields. Tie the harvested crops securely and cover them to minimize the risk of displacement from strong surface winds.
- Provide mechanical support to horticultural crops and staking or support to vegetables and young fruit plants / fruit-bearing plants to avoid lodging due to strong winds.

#### **Livestock / Poultry / Fisheries**

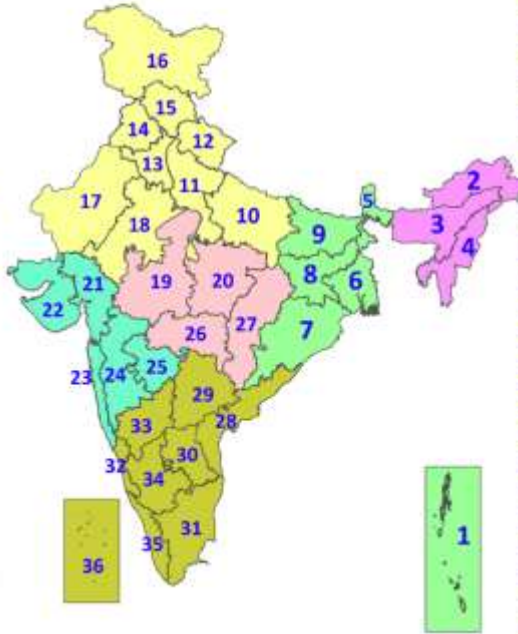
- Keep the animals inside the shed during heavy rainfall and provide them balanced feed.
- Store the feed and fodder in a safe place to prevent spoilage.
- In regions with high temperatures and heat wave conditions, provide clean, cool drinking water to animals, and cover the roofs of poultry sheds with grass to reduce the adverse effects of heat.
- Construct an outlet with proper netting around the ponds to drain excess water, thereby preventing fish from escaping in the event of overflow.

### Legends & abbreviations:

- ❖ **Heavy Rain:**64.5115.5mm; **Very Heavy Rain:**115.6204.4mm; **Extremely Heavy Rain:** >204.4mm.
- ❖ **Obsy:** Observatory; Automatic Weather Station; **ARG:** Automatic Rain Gauge; **dist:** District; **NH:** National Highway; **KVK:** Krishi Vigyan Kendra; **DVC:** Damodar Valley Corporation; **PTO:** Part Time Office, **Aero:** Aerodrome, **IAF:** Indian Air Force.
- ❖ **Region wise classification of meteorological Sub-Divisions:**
  - **Northwest India:** Western Himalayan Region (Jammu-Kashmir-Ladakh-Gilgit-Baltistan-Muzaffarabad, Himachal Pradesh and Uttarakhand); Punjab, Haryana Chandigarh & Delhi; West Uttar Pradesh, East Uttar Pradesh, West Rajasthan and East Rajasthan.
  - **Central India:** West Madhya Pradesh, East Madhya Pradesh, Vidarbha and Chhattisgarh.
  - **East India:** Bihar, Jharkhand, Sub-Himalayan West Bengal & Sikkim; Gangetic West Bengal, Odisha and Andaman & Nicobar Islands.
  - **Northeast India:** Arunachal Pradesh, Assam & Meghalaya and Nagaland, Manipur, Mizoram & Tripura.
  - **West India:** Gujarat Region, Saurashtra & Kutch, Coastal Maharashtra (Konkan) & Goa, Madhya Maharashtra and Marathawada.
  - **South India:** Coastal Andhra Pradesh & Yanam, Telangana, Rayalaseema, Coastal Karnataka, North Interior Karnataka, South Interior Karnataka, Kerala & Mahe, Tamil Nadu, Puducherry & Karaikal and Lakshadweep.

## LEGENDS

1. अंडमान और निकोबार द्वीपसमूह
2. अरुणाचल प्रदेश
3. असम और मेघालय
4. नागालैंड, मणिपुर, मिजोरम और त्रिपुरा
5. उप-हिमालयी पश्चिम बंगाल और सिक्किम
6. गंगीय पश्चिम बंगाल
7. ओडिशा
8. झारखंड
9. बिहार
10. पूर्वी उत्तर प्रदेश
11. पश्चिम उत्तर प्रदेश
12. उत्तराखंड
13. हरियाणा, चंडीगढ़ और दिल्ली
14. पंजाब
15. हिमाचल प्रदेश
16. जम्मू और कश्मीर और लद्दाख
17. पश्चिम राजस्थान
18. पूर्वी राजस्थान
19. पश्चिम मध्य प्रदेश
20. पूर्वी मध्य प्रदेश
21. गुजरात
22. सौराष्ट्र
23. कोंकण और गोवा
24. मध्य महाराष्ट्र
25. मराठवाड़ा
26. विदर्भ
27. छत्तीसगढ़
28. तटीय आंध्र प्रदेश और यनम
29. तेलंगाना
30. रायलसीमा
31. तमिलनाडु, पुडुचेरी और कराईकल
32. तटीय कर्नाटक
33. आंतरिक उत्तरी कर्नाटक
34. आंतरिक दक्षिणी कर्नाटक
35. केरल और माहे
36. लक्षद्वीप



1. Andaman & Nicobar Islands
2. Arunachal Pradesh
3. Assam & Meghalaya
4. Nagaland, Manipur, Mizoram & Tripura
5. Sub-Himalayan West Bengal & Sikkim
6. Gangetic West Bengal
7. Odisha
8. Jharkhand
9. Bihar
10. East Uttar Pradesh
11. West Uttar Pradesh
12. Uttarakhand
13. Haryana, Chandigarh & Delhi
14. Punjab
15. Himachal Pradesh
16. Jammu & Kashmir and Ladakh
17. West Rajasthan
18. East Rajasthan
19. West Madhya Pradesh
20. East Madhya Pradesh
21. Gujarat
22. Saurashtra
23. Konkan & Goa
24. Madhya Maharashtra
25. Marathwada
26. Vidarbha
27. Chhattisgarh
28. Coastal Andhra Pradesh & Yanam
29. Telangana
30. Rayalaseema
31. Tamilnadu, Puducherry & Karaikal
32. Coastal Karnataka
33. North Interior Karnataka
34. South Interior Karnataka
35. Kerala & Mahe
36. Lakshadweep

### SPATIAL DISTRIBUTION (% of Stations reporting)

| % Stations | Category                            | % Stations | Category                     |
|------------|-------------------------------------|------------|------------------------------|
| 76-100     | Widespread (WS/Most Places)         | 26-50      | Scattered (SCT/A Few Places) |
| 51-75      | Fairly Widespread (FWS/Many Places) | 1-25       | Isolated (ISOL)              |

- |                      |                      |              |
|----------------------|----------------------|--------------|
| Fog                  | Heavy Snow           | Cold Wave    |
| Heavy Rain           | Dust Storm           | Cold Day     |
| Very Heavy Rain      | Heat Wave            | Ground Frost |
| Extremely Heavy Rain | Warm Night           |              |
| Thunder & Lightning  | Hot Day              |              |
| Hailstorm            | Hot & Humid          |              |
| Dust Raising Winds   | Strong Surface Winds |              |

#### COLOUR CODED WARNING

- No Warning (No Action)
- Watch (Be Aware)
- Alert (Be Prepared To Take Action)
- Warning (Take Action)

#### Probabilistic Forecast

| Terms       | Probability of Occurrence (%) |
|-------------|-------------------------------|
| Unlikely    | < 25                          |
| Likely      | 25 - 50                       |
| Very Likely | 50 - 75                       |
| Most Likely | > 75                          |

\* Red colour warning does not mean "Red Alert". Red colour warning means "Take Action".  
Forecast and Warning for any day is valid from 0830 hours IST of day till 0830 hours IST of next day.  
For more details, kindly visit <https://mausam.imd.gov.in> or contact: 011-2434-4599  
(Service to the Nation since 1875)

### DEFINITION/CRITERIA

|                        |  |
|------------------------|--|
| <b>Rain/ Snow *</b>    | <p><b>Heavy:</b> 64.5 to 115.5 mm/cm *</p> <p><b>Very Heavy:</b> 115.6 to 204.4 mm/cm*</p> <p><b>Extremely Heavy:</b> &gt; 204.4 mm/cm *</p>   |
| <b>Heat Wave</b>       | <p>When maximum temperature of a station reaches <math>\geq 40^{\circ}\text{C}</math> for plains and <math>\geq 30^{\circ}\text{C}</math> for hilly regions</p> <p><b>(a) Based on Departure from normal</b></p> <p><b>Heat Wave:</b> Maximum Temperature Departure from normal <math>4.5^{\circ}\text{C}</math> to <math>6.4^{\circ}\text{C}</math>.</p> <p><b>Severe Heat Wave:</b> Maximum Temperature Departure from normal <math>\geq 6.5^{\circ}\text{C}</math></p> <p><b>(b). Based on Actual maximum temperature</b></p> <p><b>Heat Wave:</b> When actual maximum temperature <math>\geq 45^{\circ}\text{C}</math>.</p> <p><b>Severe Heat Wave:</b> When actual maximum temperature <math>\geq 47^{\circ}\text{C}</math></p> <p><b>( c). Criteria for heat wave for coastal stations</b></p> <p>When maximum temperature departure is <math>&gt;4.5^{\circ}\text{C}</math> from normal. Heat Wave may be described provided maximum temperature <math>\geq 37^{\circ}\text{C}</math></p> |
| <b>Warm Night</b>      | <p><b>When maximum temperature remains <math>40^{\circ}\text{C}</math></b></p> <p><b>Warm Night:</b> When minimum temperature departure <math>4.5^{\circ}\text{C}</math> to <math>6.4^{\circ}\text{C}</math>.</p> <p><b>Severe Warm Night:</b> When minimum temperature departure <math>&gt;6.4^{\circ}\text{C}</math>.</p>  |
| <b>Cold Wave</b>       | <p>When minimum temperature of a station <math>\leq 10^{\circ}\text{C}</math> for plains and <math>\leq 0^{\circ}\text{C}</math> for hilly regions.</p> <p><b>(a). Based on departure</b></p> <p><b>Cold Wave:</b> Minimum Temperature Departure from normal <math>-4.5^{\circ}\text{C}</math> to <math>-6.4^{\circ}\text{C}</math>.</p> <p><b>Severe Cold Wave:</b> Minimum Temperature Departure from normal <math>\leq -6.5^{\circ}\text{C}</math></p> <p><b>(b) Based on actual Minimum Temperature (for Plains only)</b></p> <p><b>Cold Wave :</b> When Minimum Temperature is <math>\leq 4.0^{\circ}\text{C}</math></p> <p><b>Severe Cold Wave:</b> When Minimum Temperature is <math>\leq 2.0^{\circ}\text{C}</math></p> <p><b>( c) For Coastal Stations</b></p> <p>When Minimum Temperature departure is <math>\leq -4.5^{\circ}\text{C}</math> &amp; actual Minimum Temperature is <math>\leq 15^{\circ}\text{C}</math></p>   |
| <b>Cold Day</b>        | <p>When minimum temperature of a station <math>&lt; 10^{\circ}\text{C}</math> for plains and <math>\leq 0^{\circ}\text{C}</math> for hilly regions</p> <p><b>Based on departure</b></p> <p><b>Cold Day:</b> Maximum Temperature Departure from normal <math>-4.5^{\circ}\text{C}</math> to <math>-6.4^{\circ}\text{C}</math>.</p> <p><b>Severe Cold Day:</b> Maximum Temperature Departure from normal <math>\leq -6.5^{\circ}\text{C}</math></p>  |
| <b>Fog</b>             | <p><b>Phenomenon of small droplets suspended in air and the horizontal visibility <math>&lt; 1\text{km}</math></b></p> <p><b>Moderate Fog:</b> When the visibility between 500-200 metres</p> <p><b>Dense Fog:</b> when the visibility between 50- 200 metres</p> <p><b>Very Dense Fog:</b> when the visibility <math>&lt; 50</math> metres</p>  |
| <b>Thunderstorm</b>    | <p>Sudden electrical discharges manifested by a flash of light (Lightning) and a sharp rumbling sound (thunder)</p>  |
| <b>Dust/Sand Storm</b> | <p>An ensemble of particles of dust or sand energetically lifted to great heights by a strong and turbulent wind.</p>  |
| <b>Frost</b>           | <p><b>Ice deposits on ground</b></p> <p>Air temperature <math>\leq 4^{\circ}\text{C}</math> ( over Plains)</p>   |
| <b>Squall</b>          | <p><b>A strong wind that rises suddenly, lasts for atleast 1 minute.</b></p> <p><b>Moderate:</b> Wind speed 52-61 kmph</p> <p><b>Severe:</b> Wind speed 62-67 kmph</p> <p><b>Very Severe:</b> Wind speed <math>&gt;67</math> kmph</p>  |
| <b>Sea State</b>       | <p><b>Effect of various waves in the sea over specific area</b></p> <p><b>Rough to very rough:</b> Wind speed 41-62 kmph (22-33 knots) &amp; Wave height 2.5-6 metre</p> <p><b>High to very high:</b> Wind speed 63-117 kmph ( 34-63 knots) &amp; Wave height 6-14 metre</p> <p><b>Phenomenal:</b> Wind speed <math>&gt;117</math> kmph (<math>&gt;63</math> knots) &amp; Wave height <math>&gt;14</math> metre</p>  |
| <b>Cyclone</b>         | <p><b>Cyclonic Storm:</b> Wind speed 62-87 kmph (34-47 knots)</p> <p><b>Severe Cyclonic Storm:</b> Wind speed 88-117 kmph (48-63 knots)</p> <p><b>Very Severe Cyclonic Storm:</b> Wind speed 118-165 kmph (64 - 89 knots)</p> <p><b>Extremely Severe Cyclonic Storm:</b> Wind speed 166-220 kmph (90 -119 knots)</p> <p><b>Super Cyclone Storm:</b> Wind speed <math>&gt;220</math> kmph (<math>&gt;119</math> knots)</p>  |

\* Red colour warning does not mean "Red Alert", Red colour warning means "Take Action".  
Forecast and Warning for any day is valid from 0830 hours IST of day till 0830 hours IST of next day.  
For more details, kindly visit <https://mausam.imd.gov.in> or contact: 011-2434-4599  
(Service to the Nation since 1875)