



**Ministry of Earth Sciences
Earth System Science Organization
India Meteorological Department
National Weather Forecasting Centre, New Delhi
FDP WINTER WEATHER SYSTEMS REPORT**



Dated: 27th February, 2020

1. Observation

1.1. Past and current Observations (Synoptic):

RMC NEW DELHI	Parameter	Description								
		Actual			Departure			Change		
	Lowest Minimum	Stations	Min (in°C)							
	Plains	Churk (Uttar Pradesh)	10.1	MBN	- 5.1°C or less	NIL	MF	- 4.1°C or less	NIL	
				ABN	-3.1°C to - 5.0°C	NIL	AF	-2.1°C to -4.0°C	NIL	
	Hills	Drass	-15.7	BN	-1.6°C to - 3.0°C	NIL				NLC
	(Jammu &Kashmir)	Normal		-1.5°C to 1.5°C	Most places: Haryana. Many Places: Uttar Pradesh, Few Places: J&K, Uttarakhand Isolated Places: Punjab					
				AN	1.5°C to	Most Places: UP				

RMC NEW DELHI		Minimum Temperature less than 10 °C	places: Jammu & Kashmir and Himachal Pradesh isolated Places: Uttarakhand,		3.0°C	Isolated Places: J&K, East Rajasthan, Punjab, Uttarakhand, Himachal Pradesh	AR	2.1°C to 4.0°C	Isolated Places: Rajasthan
				AAN	3.1°C to 5.0°C	Most Places: J&K, Many places: Punjab Isolated Places: Uttarakhand, west Uttar Pradesh, Rajasthan.			
				MAN	5.1°C or more	Isolated Places: east Rajasthan, Haryana, J&K.	MR	4.0°C and above	NIL
RMC	MSLP	Generally, the pressure is between 1011.1 to 1018.6 hPa over the plains.		MBN	- 5.1 hPa or less	NIL	MF	- 4.1 hPa or less	Nil
				ABN	-3.1 hPa to -5.0 hPa	Isolated Places: West Rajasthan	AF	-2.1 hPa to -4.0 hPa	Nil
				BN	-1.6 hPa to -3.0 hPa	Isolated Places: West Rajasthan and east UP	NLC	-2.0 hPa to 2.0 hPa	Most places NW-India.
				Normal	-1.5 hPa to 1.5 hPa	Many Places: Punjab, Haryana. UP and Rajasthan.	AR	2.1 hPa to 4.0 hPa	Nil

NEW DELHI			AN	1.5 hPa to 3.0 hPa	many places: Uttar Pradesh.	MR	4.0 hPa and above	Nil	
			AAN	3.1 hPa to 5.0 hPa	Isolated places: UP, east Rajasthan and Haryana.				
			MAN	5.1 hPa or more	Nil				
	RH (%)	00 UTC (more than 75%)				12 UTC (more than 75%)			
		Most places over northwest India except Rajasthan where it is at a few Places.				Many places: Uttarakhand. Few Places: Himachal Pradesh and East Uttar Pradesh. Isolated Places: Punjab and West Uttar Pradesh.			
	Visibility (Meters)		00 UTC	03 UTC	12 UTC		18 UTC		
		999 – 500	Hissar, Amritsar	Ludhiana, Rohtak.	NIL		NIL		
		499 – 200	NIL	Ambala, Karnal, Hissar, Amritsar.	NIL		NIL		
		199 – 50	NIL	Bhiwani, Fursatganj, Barabanki, Sultanpur, Varanasi.	NIL		NIL		
		Below 50	NIL	NIL	NIL		NIL		
	Minimum Temp less than 10°C & Maximum temperature Departure								
	Cold Day	-4.5°C to -6.4°C	Nil						
	Severe Cold Day	Below -6.4°C	Nil						
Cold Wave		NIL							

	Severe Cold Wave			NIL						
	Rainfall	Isolated Places: east Uttar Pradesh.								
RMC KOLKATA	Parameter	Description								
		Actual			Departure			Change		
	Tmin (Fig.1 to 3)	Lowest Minimum	Station	Min (in °C)						
		Plains	Titlagarh (Odisha)	10.5	MBN	- 5.1°C or less	One or two places over Odisha & Sikkim.	MF	- 4.1°C or less	One or two places over Odisha.
					ABN	-3.1°C to - 5.0°C	Few places over Odisha. One or two places over Sikkim.	AF	-2.1°C to -4.0°C	Few places over Sikkim & SHWB. One or two places over Bihar & Odisha.
		Hills	Darjeeling (SHWB)	3.6	BN	-1.6°C to -3.0°C	Few places over Odisha. One or two places over Bihar, Jharkhand, Sikkim, SHWB & GWB.	NLC	-2.0°C to 2.0°C	Rest of the land region over Bihar, Jharkhand, Odisha, Sikkim, SHWB & GWB.
					Normal	-1.5°C to 1.5°C	Rest of the land region over Bihar, Jharkhand, Sikkim, SHWB & GWB.			
					Minimum Temperature less than 10 °C		Darjeeling=3.6 Kalimpong=7.0 Gangtok=5.1 Tadong=7.7	AN	1.5°C to 3.0°C	One or two places over Bihar & SHWB.
		AAN	3.1°C to 5.0°C	NIL				MR	4.1°C and above	NIL
		MAN	5.1°C or more	NIL						

	MSLP (Fig.4 to 6)	Generally, the pressure is between 1015.5 hPa at Puri (Odisha) to 1017.8 hPa at Bagdogra (SHWB) over the plains.			MBN	- 5.1 hPa or less	NIL	MF	- 4.1 hPa or less	NIL
					ABN	-3.1 hPa to -5.0 hPa	NIL	AF	-2.1 hPa to -4.0 hPa	NIL
					BN	-1.6 hPa to -3.0 hPa	NIL	NLC	-2.0 hPa to 2.0 hPa	Most places over Bihar, Jharkhand, Odisha, Sikkim & West Bengal.
					Normal	-1.5 hPa to 1.5 hPa	Rest of the land region over Bihar, Jharkhand, Odisha, Sikkim & West Bengal.	AR	2.1 hPa to 4.0 hPa	One or two places over Odisha.
					AN	1.5 hPa to 3.0 hPa	Most places over Jharkhand. Many places over Bihar, Odisha & SHWB. Few places over GWB.	MR	4.0 hPa and above	NIL
					AAN	3.1 hPa to 5.0 hPa	Few places over Bihar & Odisha. One or two places over SHWB.			
					MAN	5.1 hPa or more	One or two places over Odisha.			
	RH (%) (Fig. 7 &8)	00 UTC (more than 75%)					12 UTC (more than 75%)			
		Most places over Bihar, Jharkhand, Odisha, Sikkim & West Bengal.					Most places over Bihar. Many places over SHWB & GWB. Few places over Odisha.			
	Visibility (Meters) (Fig. 9 to Fig. 12)		00 UTC	03 UTC	12 UTC			18 UTC		
		999 – 500	One or two places over Odisha (Puri).	Few places over Odisha (Chandbali, Jharsuguda, Phulbani) One or two places over Bihar (Patna).	NIL			NIL		

		499 – 200	Few places over Bihar (Patna, Gaya, Bhagalpur)		One or two places over Jharkhand (Daltonganj)	NIL	NIL
		199 – 50	One or two places over Odisha (Gopalpur, Chandbali).		One or two places over Bihar (Bhagalpur) & Odisha (Paradip).	NIL	NIL
		Below 50	NIL		NIL	NIL	NIL
	Minimum Temp less than 10°C & Maximum temperature Departure						
	Cold Day	-4.5°C to -6.4°C		NIL			
	Severe Cold Day	Below -6.4°C		NIL			
	Cold Wave		NIL				
	Severe Cold Wave		NIL				
	Rainfall(mm)	Patna=Trace, Gaya=Trace, Jamshedpur=2.8 Damthang=9.0, Gangtok = 6.6, Tadong =6.4, Ranipool=5.1, Pakyong =3.0, Mangan = 5.4, Shipgyer = 3.4, Kabi =1.2, Midnapore=19.6, Kalikunda=12.8, Darjeeling=9.8, Barrackpur=7.2, Kalimpong=4.0, Dum Dum=3.6, Sriniketan=1.5, Jalpaiguri=0.3, Bagdogra=Trace, Digha=Trace					
	Paramet er	Description					
Actual			Departure	Change			
Lowest Minimu m		Stations			Min (in ⁰ C)		

RMC GUWAHAT I	Tmin (Fig.1 to 3)	Plains	Imphal	9.2	MBN	- 5.1°C or less	NIL	MF	- 4.1°C or less	At a few places over Meghalaya			
					ABN	-3.1°C to - 5.0°C	NIL	AF	-2.1°C to -4.0°C	At a few places over Assam, At a few places over Mizoram			
		Hills	Shillong	6.0	BN	-1.6°C to -3.0°C	At most places over Meghalaya	NLC	-2.0°C to 2.0°C	At many places over Assam, At many places over Meghalaya, At most places over Manipur, At most places over AR. PRADESH, At most places over TRIPURA ,At a few places over Mizoram			
					Normal	-1.5°C to 1.5°C	At most places over Assam, ,At most places over Manipur, At most places over AR. PRADESH, At most places over TRIPURA						
					Minimum Temperature less than 10 °C		Shillong = 6,Barapan i = 6.5,Cherra punjee = 7.4,Aizawl = 8.8,Imphal = 9.2,Deoma li = 9.8,	AN	1.6°C to 3.0°C	At most places over Assam, At most places over Manipur	AR	2.1°C to 4.0°C	At most places over Nagaland.
								AAN	3.1°C to 5.0°C	NIL			

				MAN	5.1°C or more	NIL				
	MSLP (Fig.4 to 6)	Mean sea level pressure is lying in between the ranges in 1016.3 to 1018.7 in HPA			MBN	- 5.1 hPa or less	NIL	MF	- 4.1 hPa or less	NIL
					ABN		NIL	AF	-2.1 hPa to -4.0 hPa	At a few places over Mizoram
					BN	-1.6 hPa to -3.0 hPa	NIL	NLC	-2.0 hPa to 2.0 hPa	At a few places over Mizoram
					Normal	-1.5 hPa to 1.5 hPa	NIL	AR	2.1 hPa to 4.0 hPa	At most places over Nagaland
					AN	1.6 hPa to 3.0 hPa	At a few places over Assam, ,At most places over Manipur, At most places over TRIPURA	MR	4.0 hPa and above	At most places over Nagaland
					AAN	3.1 hPa to 5.0 hPa	At many places over Assam, At Isolated places over AR. PRADESH			
					MAN	5.1 hPa or more	At most places over Meghalaya			
	RH (%) (Fig. 7 &8)	00 UTC (more than 75%)					12 UTC (more than 75%)			
		At most places over Assam, Meghalaya, Manipur, Arunachal Pradesh and Tripura.					At most places over meghalaya, nagaland, manipur and mizoram at a few places over ar.pradesh and tripura.			
	Visibility (Meters) (Fig. 9 to Fig. 12)		00 UTC		03 UTC		12 UTC		18 UTC	
		999 – 500	Nil		Dhubri, Kailasahar		Nil		Nil	

		499 – 200	Guwahati, Silchar	Guwahati, Silchar, Barapani	Nil	Nil
		199 – 50	Lengpui	Lengpui	Nil	Nil
		Below 50	Nil	Nil	Nil	Nil
	Minimum Temp less than 10°C & Maximum temperature Departure					
	Cold Day	-4.5°C to -6.4°C	Nil			
	Severe Cold Day	Below -6.4°C	Nil			
	Cold Wave		Nil			
	Severe Cold Wave		Nil			
	Rainfall	Beki Rd. Bridge = 49.2,Williamnagar = 37,Sohra = 34.3,Tezpur = 33.1,Beki-Mathanguri = 32.8,Sohra(Rkm) = 30.2,Bhalukpong = 26.2,Passighat = 24,Barpeta = 24,Mamit = 24,Dhekiajuli = 22.2,Maranhat = 22,Ziro = 22,Dharamtul = 20.2,Neamatighat = 19.2,Jia Bharali N T Xing = 18.4,Gossaigaon = 18.1,Baghmara = 17.8,M.C. Itanagar = 16.6,Majbat = 16.2,Badatighat = 16,Mawsynram = 15.6,Dibrugarh A/P = 15.2,Chouldhowaghat = 15.2,Numaligarh = 13,Manas N H Xing = 12.8,Dhemaji = 11.6,Thoubal = 10.4,Dhollabazar = 10.2,Bahalpur = 10.2,N/Lakhimpur = 10.1,Churachandpur = 10,Kajalgaon(Aws) = 10,Bongaigaon (Aws) = 10,Seppa = 9.6,Namsai = 9.6,Barapani = 9.4,Sibsagar = 9.2,Saiha = 9.2,Bishnupur = 9,Nt Xing(Ranganadi) = 8.6,Roing = 8.6,Basar = 8,Panbari = 8,Lawngtlai = 8,Goibergaon = 7.4,Tinsukia = 7,Ukhrul = 6.6,Kampur = 6.6,Khowang = 6.4,Yingkiong = 6.2,Imphal A/P = 6,Kokrajhar = 5,Aizwal = 5,Mangaldoi = 5,Tuting = 4.8,Guwahati A/P = 4.2,Guwahati (City) = 4.2,Lengpui = 4.2,Tangla = 4.2,Guwahati A/P(Aws) = 4,Naharkatia = 4,Daporijo = 3.2,Golaghat = 3.2,Chandel = 2.3,Golaghat(Cwc) = 2.2,Champhai = 1.4,Khliehriat = 1.2,Bihubar = 1.2,Aie N H Xing = 1.2,Senapati = 1,Mushalpur (Aws) = 1,Miao = 0.8,Shillong = 0.6,Kiphire = 0.6,Jorhat = 0.4				

RMC NAGPUR	Parameter	Description								
		Actual			Departure			Change		
	Lowest Minimum	Stations	Min (in °C)							
	Tmin (Less than 10 Deg C)	Plains	NA	NA	MBN	- 5.1°C or less	Nil.	MF	- 4.1°C or less	Isolated places over Chhattisgarh.
					ABN	3.1°C to -5.0°C	Few places over Vidarbha, isolated places over Chhattisgarh & East Madhya Pradesh.	AF	-2.1°C to -4.0°C	Nil.
		Hills	Pachmarhi	8.6	BN	-1.6°C to -3.0°C	Few places over Vidarbha and Chhattisgarh, Isolated places over Madhya Pradesh.	NLC	-2.0°C to 2.0°C	Most Places over Madhya Pradesh & Chhattisgarh and Many places over Vidarbha.
					Normal	-1.5°C to 1.5°C	Many places over Madhya Pradesh & Isolated places over Vidarbha.			
					Minimum Temperature less than 10 °C		Isolated places over West Madhya Pradesh	AN	1.6°C to 3.0°C	Few places over West Madhya Pradesh & Isolated places over East Madhya Pradesh.
		AAN	3.1°C to 5.0°C	NIL				MR	4.1°C and above	Nil.
		MAN	5.1°C or more	Nil.						

	MSLP	Generally pressure is between 1013.0 to 1019.8 hpa.	MBN	- 5.1 hPa or less	Nil.	MF	- 4.1 hPa or less	Nil.	
			ABN	-3.1 hPa to -5.0 hPa	Nil.	AF	-2.1 hPa to -4.0 hPa	Nil.	
			BN	-1.6 hPa to -3.0 hPa	Nil.	NLC	-2.0 hPa to 2.0 hPa	Most places over West Madhya Pradesh, Vidarbha and Chhattisgarh & Many places over East Madhya Pradesh.	
			Normal	-1.5 hPa to 1.5 hPa	Most places over West Madhya Pradesh, Few places East Madhya Pradesh and isolated places over Vidarbha.	AR	2.1 hPa to 4.0 hPa	Isolated places over East Madhya Pradesh.	
			AN	1.5 hPa to 3.0 hPa	Many places over East Madhya Pradesh, Few places over Vidarbha and Chhattisgarh & isolated places over West Madhya Pradesh.	MR	4.0 hPa and above	Nil.	
			AAN	3.1 hPa to 5.0 hPa	Many places over Chhattisgarh & Few places over Vidarbha.				
			MAN	5.1 hPa or more	Isolated places over East Madhya Pradesh.				
				03 UTC (more than 75%)				12 UTC (more than 75%)	

	RH (%)	Many places over Madhya Pradesh, few places over Chhittsgarh and isolated places Vidarbha.			NIL	
	Visibility (Meters)		00 UTC	03 UTC	12 UTC	18 UTC
		999 – 500	NIL	NIL	NIL	NIL
		499 – 200	NIL	NIL	NIL	NIL
		199 – 50	NIL	NIL	NIL	NIL
		Below 50	NIL	NIL	NIL	NIL
	Minimum Temp less than 10°C & Maximum temperature Departure					
	Cold Day	-4.5°C to -6.4°C	NIL.			
	Severe Cold Day	Below -6.4°C	NIL.			
	Cold Wave		NIL.			
	Severe Cold Wave		NIL.			
	Rainfall		NIL.			

1.2. Observations

Satellite Observations:-

Onset At 2300 UTC of 26.02.2020 :- Isolated to Scattered over east Uttar Pradesh west Bihar north coastal Orissa (.)

Maximum Extent at 0300 UTC of 27.02.2020 :- Isolated to Scattered over east Uttar Pradesh Bihar Extreme north Jharkhand north east coastal Orissa extreme west Assam west Meghalaya (.)

Persists/Dissipation :- Fog still persist at 0600 UTC over north central Uttar praesh and west Bihar (.)

Fog/Low Clouds over India:-

Onset At 2200 UTC of 22.02.2020 :- Scattered over south-east Madhya Pradesh.

Maximum Extent at 0300 UTC of 27.02.2020 :- Scattered over extreme north-east Rajasthan south Uttar pradesh north Madhya Pradesh.

Persists/Dissipation :- Fog still persists over south east Uttar Pradesh north east Madhya Pradesh at 0600 UTC.

Daily Rainfall

IMR:

Rainfall up to 01-10 mm: West and north east Jammu & Kashmir Sikkim Arunachal Pradesh central Assam extreme north Nagaland (.)

HEM:

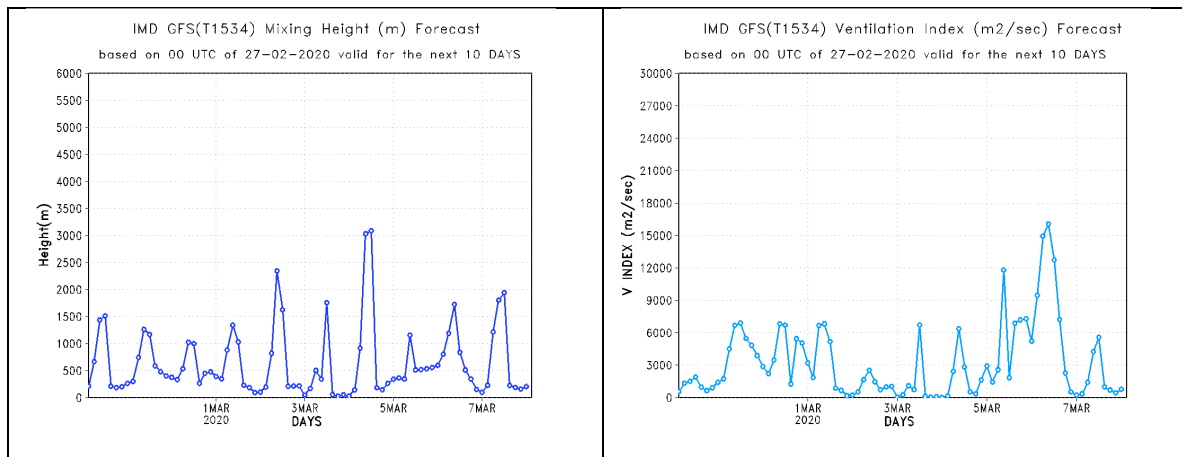
Rainfall up to 0.1 to 7mm: Extreme south west Jammu and Kashmir Arunachal Pradesh central Assam Meghalaya Nagaland Tripura Manipur (.)

(Fig:-14)

Atmospheric composition parameters:

Mixing Height and Ventilation Index Forecast

Predicted maximum mixing depth is likely to remain from 1500m on 27.02.2020, 1300m on 28.02.2020 and 1000m on 29.02.2020 over Delhi. Ventilation index is likely to be $2000\text{m}^2/\text{s}$ on 27.02.2020, $7000\text{m}^2/\text{s}$ on 28.02.2020 and 29.02.2020. The ventilation index lower than $6000\text{m}^2/\text{s}$ with average wind speed less than 10 kmph is unfavourable for dispersion of pollutants.



Air Quality Forecast

As per AQ-EWS models the air quality is likely remain in poor category on 27.02.2020 and thereafter the air quality is likely to improve owing to strong surface winds. The air quality is likely to improve marginally and remains in poor to moderate category on 28.02.2020. The air quality is likely improved further and remains in moderate category on 29.02.2020.

	Observed 27.02.2020 (0900 Hrs)	Forecast 28.02.2020	Forecast 29.02.2020
PM10 ($\mu\text{gm-3}$)	203	180	170
PM2.5 ($\mu\text{gm-3}$)	110	86	80

2. Synoptic features:

- A Western Disturbance as a trough in mid & upper tropospheric westerlies with its axis at 5.8 km above mean sea level runs roughly along Long. 57°E to the north of Lat. 28°N.
- A cyclonic circulation lies over central Pakistan & adjoining southwest Rajasthan at 0.9 km above mean sea level.

3. Dynamical features:

- The Western Disturbance seen as a trough roughly along Longitude 60°E and north of latitude 28° N in METEOSAT 8 .
- The ridge line is run roughly along latitude 7° N.
- A divergence of order $5 \text{ to } 10 \times 10^{-5} \text{ sec}^{-1}$ is seen over north Pakistan & neighbourhood.

3. Forecast and Warning Guidance for Winter Weather Precipitation and its associated synoptic features:

Precipitation and Hailstorm:

- A Western Disturbance seen as a trough in mid & upper tropospheric westerlies with its axis at 5.8 Km above mean sea level runs roughly along Long. 57°E to the north of Lat. 28°N. Under its influence, an induced cyclonic circulation is likely to form over West Rajasthan & neighbourhood tomorrow. High moisture feed is also likely over Western Himalayan region on 28th & 29th.
- Under its influence:
 - Moderate fairly widespread to widespread **rain/snowfall** very likely over Western Himalayan region and scattered to fairly widespread **rainfall** very likely over adjoining plains on 28th & 29th February.
 - Isolated thunderstorm accompanied with **lightning & hail** very likely over Western Himalayan region on 28th & 29th February. Isolated thunderstorm accompanied with **lightning, hail & gusty winds** (speed reaching 30-40 kmph) very likely over adjoining plains on 28th & 29th February.
 - Isolated **heavy rain/snow** very likely over Jammu, Kashmir, Ladakh, Gilgit-Baltistan on 28th & 29th February and over Himachal Pradesh on 29th February.

- Due to convergence of lower level easterlies & westerlies isolated to scattered rainfall with isolated thunderstorm/hailstorm likely over Madhya Pradesh, Vidarbha and Chhattisgarh on 29th February & 01st March.
 - Detailed forecast & warnings for the above systems are as follow:

Sub-Divisions	28 Feb. 2020*	29 Feb. 2020*	01 March 2020*	02 March 2020*
Jammu, Kashmir, Ladakh & Gilgit-Baltistan	Rain/snowfall most places with isolated heavy falls and thunderstorm accompanied with lightning at isolated places	Rain/snowfall most places with isolated heavy falls and thunderstorm accompanied with lightning at isolated places	Rain/Snowfall at a few places	Rain/Snowfall at isolated places
Himachal Pradesh	Rain/snowfall at many places with thunderstorm accompanied with lightning & hail at isolated places	Rain/Snowfall at most places with isolated heavy falls and thunderstorm accompanied with lightning & hail at isolated places	Rain/Snowfall at a few places	Rain/Snowfall at isolated places
Uttarakhand	Rain/snow at a few places with thunderstorm accompanied with lightning & hail at isolated places	Rain/Snowfall at many places with thunderstorm accompanied with lightning & hail at isolated places	Rain/Snowfall at a few places	Rain/Snowfall at isolated places
Punjab	Rain at a few places with thunderstorm accompanied with lightning & hail and gusty winds (30-40 kmph) at isolated places	Rain at many places with thunderstorm accompanied with lightning & gusty winds (30-40 kmph) at a few places and hailstorm at isolated places	Rain at isolated places	Dry
Haryana, Chandigarh & Delhi	Rain at a few places with thunderstorm accompanied with lightning & hail and gusty winds (30-40 kmph) at isolated places	Rain at many places with thunderstorm accompanied with lightning & gusty winds (30-40 kmph) at a few places and hailstorm at isolated places	Rain at isolated places	Dry
West Uttar Pradesh	Rain at isolated places with thunderstorm accompanied with lightning and gusty winds (30-40 kmph) at isolated places	Rain at a few places with thunderstorm accompanied with lightning & hail and gusty winds (30-40 kmph) at isolated places	Rain at isolated places with thunderstorm accompanied with lightning & hail and gusty winds (30-40 kmph) at isolated places	Rain at isolated places
East Uttar Pradesh	Dry	Rain at isolated places with thunderstorm accompanied with lightning at isolated places	Rainfall at isolated places with thunderstorm accompanied with lightning and gusty winds (30-40 kmph) at isolated places	Dry

West Rajasthan	Rain at a few places with thunderstorm accompanied with lightning & hail at isolated places	Rain at isolated places with thunderstorm accompanied with lightning at isolated places	Dry	Dry
East Rajasthan	Rain at isolated places with thunderstorm accompanied with lightning & hail and gusty winds (30-40 kmph) at isolated places	Rain at isolated places with thunderstorm accompanied with lightning & hail and gusty winds (30-40 kmph) at isolated places	Rain at isolated places	Dry
West Madhya Pradesh	Rain at isolated places	Rain at a few places with thunderstorm accompanied with lightning & hail at isolated places	Rainfall at isolated places with thunderstorm accompanied with lightning at isolated places	Dry
East Madhya Pradesh	Dry	Rain at isolated places	Rain at isolated places with thunderstorm accompanied with lightning at isolated places	Rain at isolated places
Chhattisgarh	Dry	Dry	Rain at isolated places with thunderstorm accompanied with lightning at isolated places	Rainfall at isolated places

Fog:

- Considering RH, wind speed & temperature inversion layer at lower levels and NWP model products for FOG, **No significant dense fog likely in north India during next 4-5 days.**

Cold wave & day:

- No significant change in minimum temperatures over East and Northwest India during next 2 days. Rise in minimum temperatures by 2-3°C over Central India during next 2-3 days.
- Considering minimum temperatures & its trend, **no cold wave conditions would occur over northern India during next 4-5 days.**

Fig.1.MinimumTemperatures of 27.02.2020

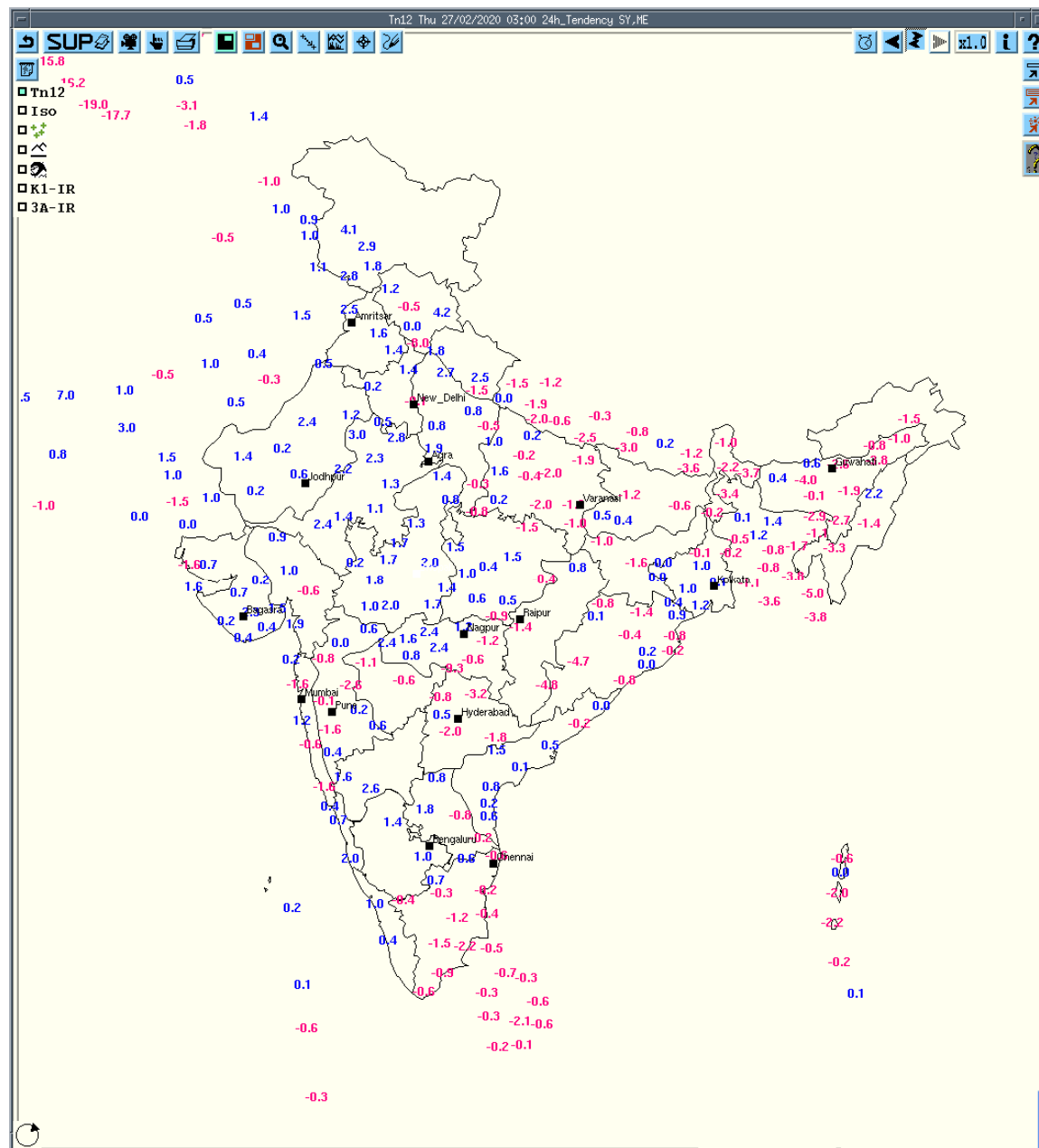


Fig.2. 24 Hours change in Minimum Temperature of 27.02.2020

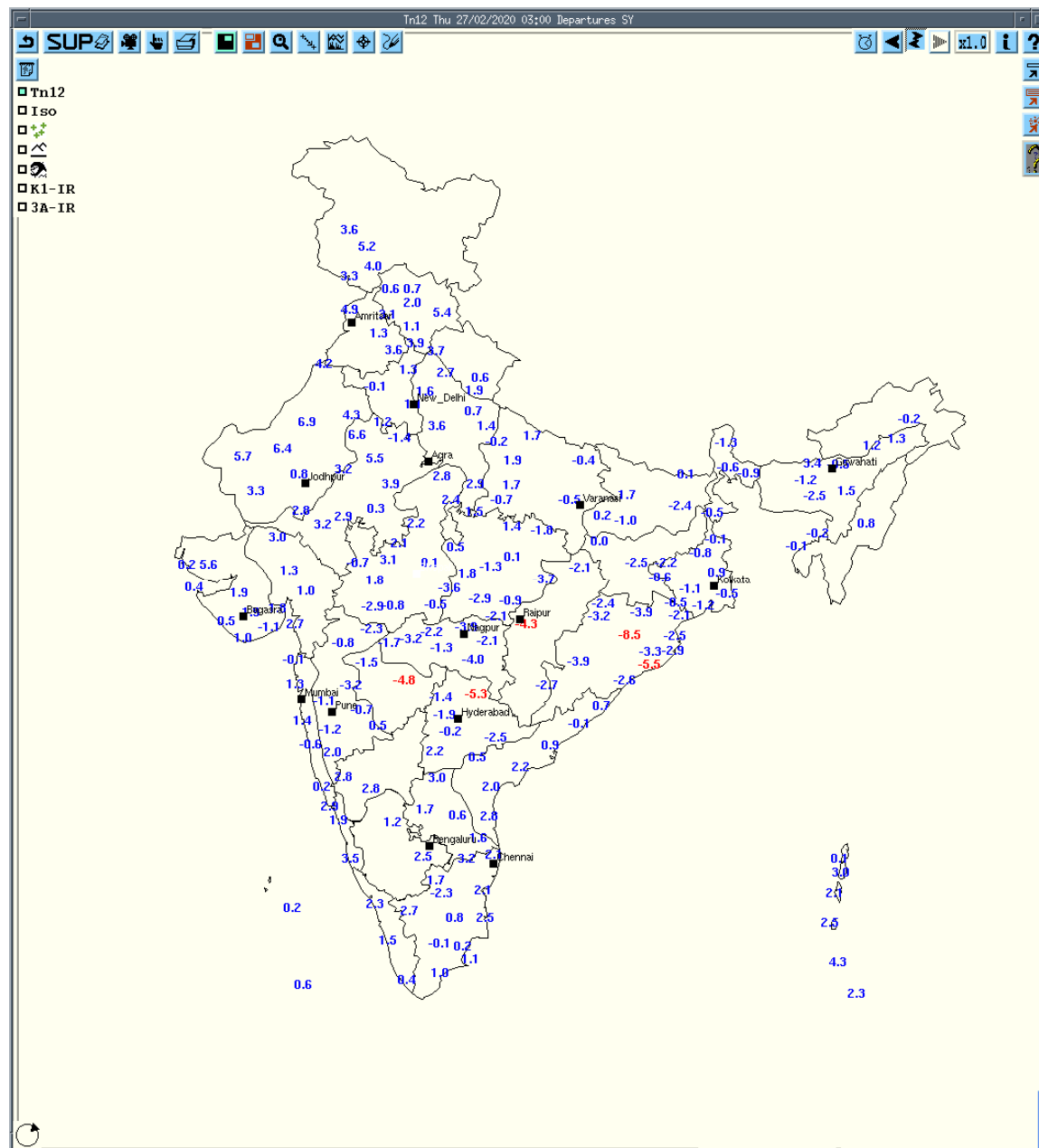


Fig.3. Minimum Temperature departure from Normal of 27.02.2020



Fig.4. Mean Sea Level Pressure of 27.02.2020

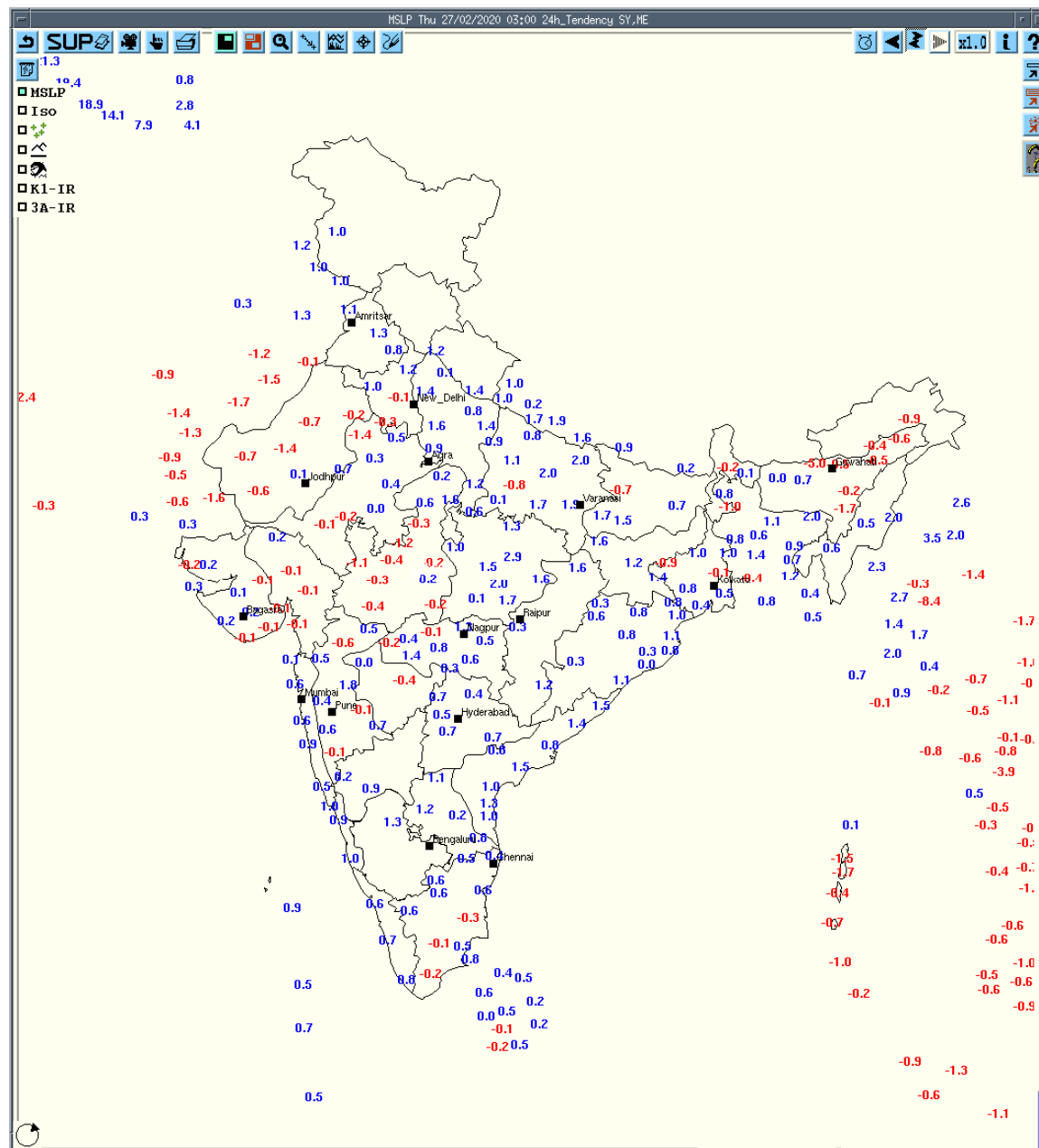


Fig.5. 24 hours change in Mean Sea Level Pressure of 27.02.2020

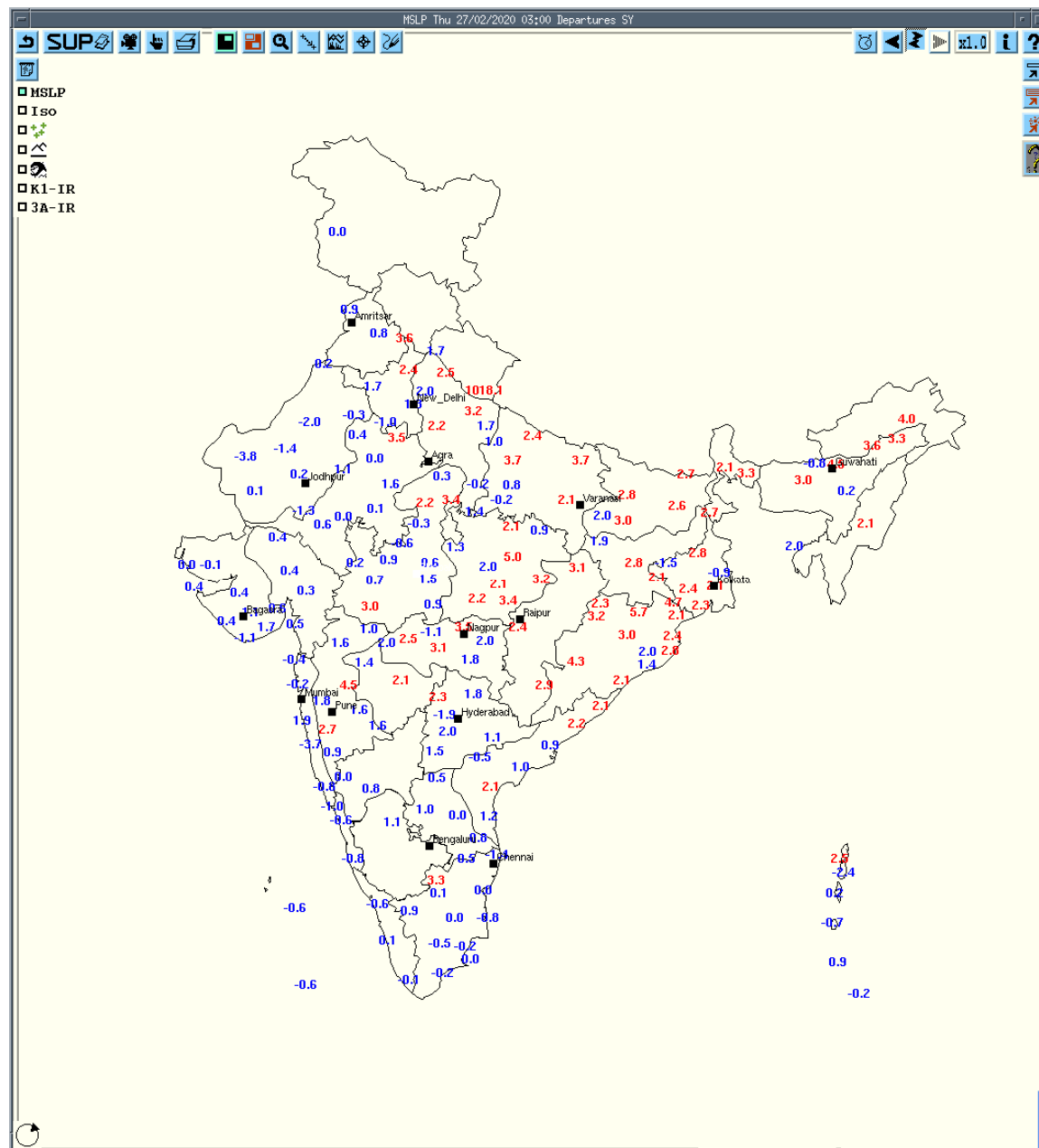


Fig.6. Departures from normal, Mean Sea Level Pressure of 27.02.2020

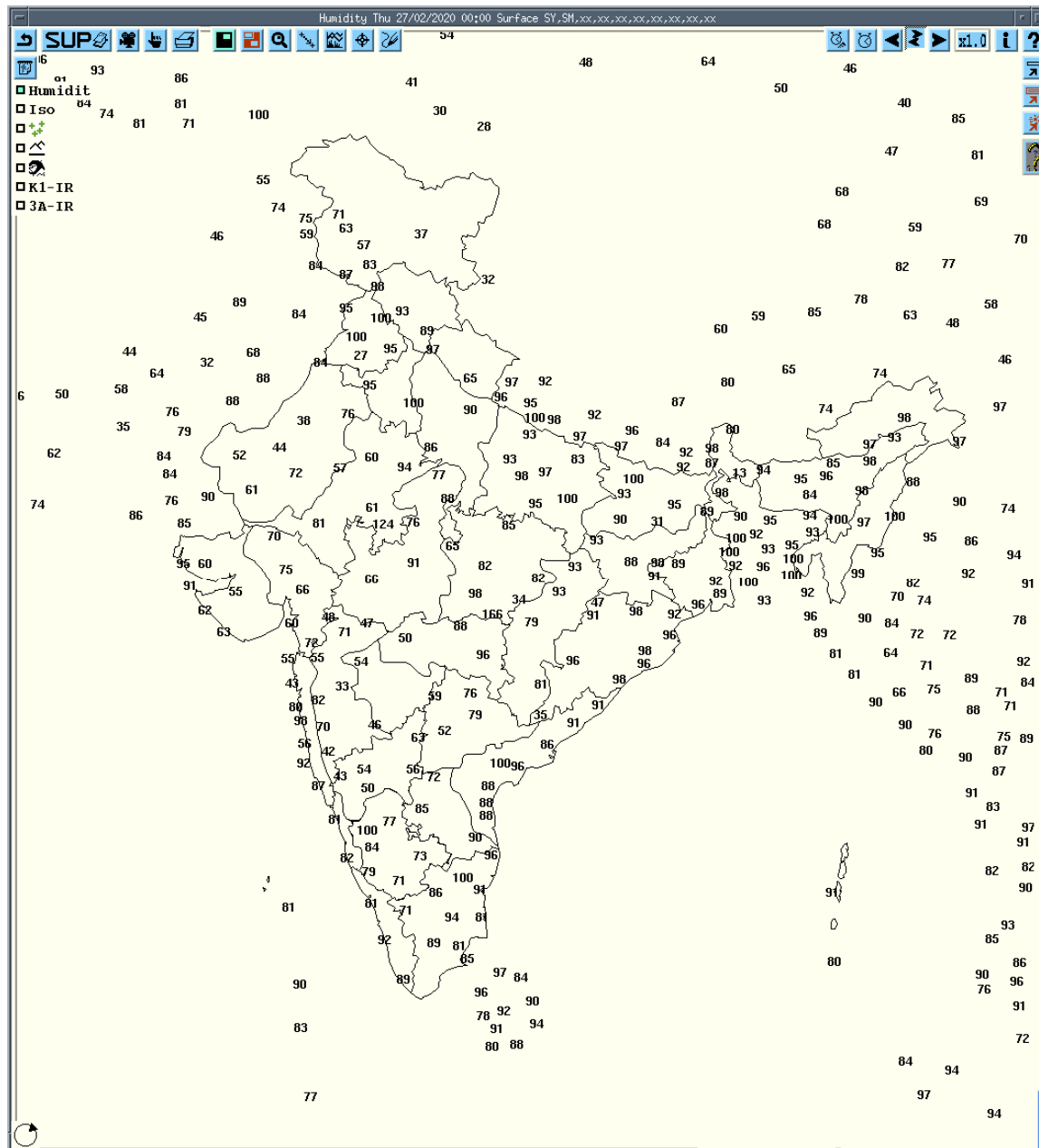


Fig.7. Relative Humidity at 0530 hours IST of 27.02.2020

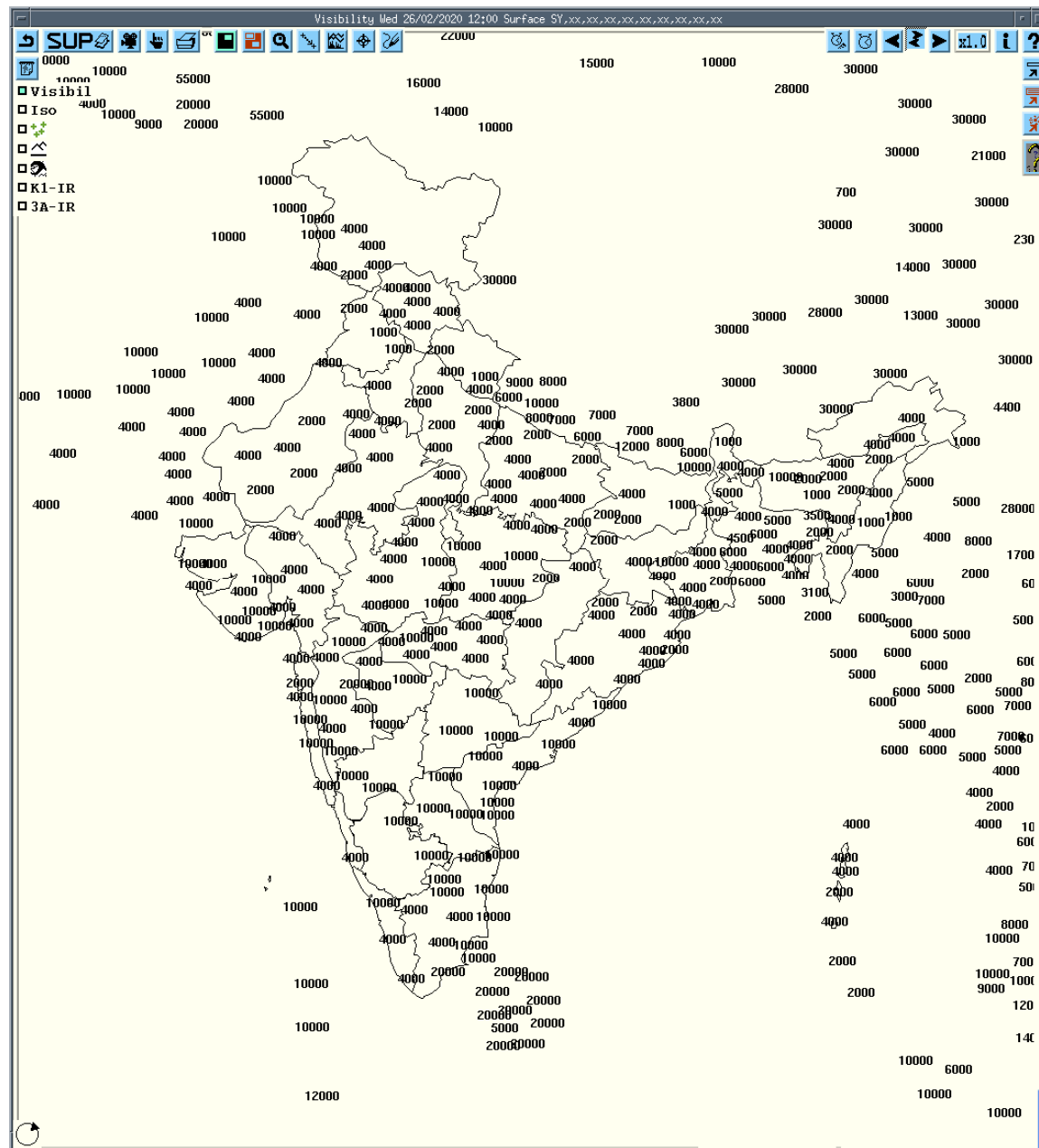


Fig.11.Visibility at 1730 hrs IST of 26.02.2020

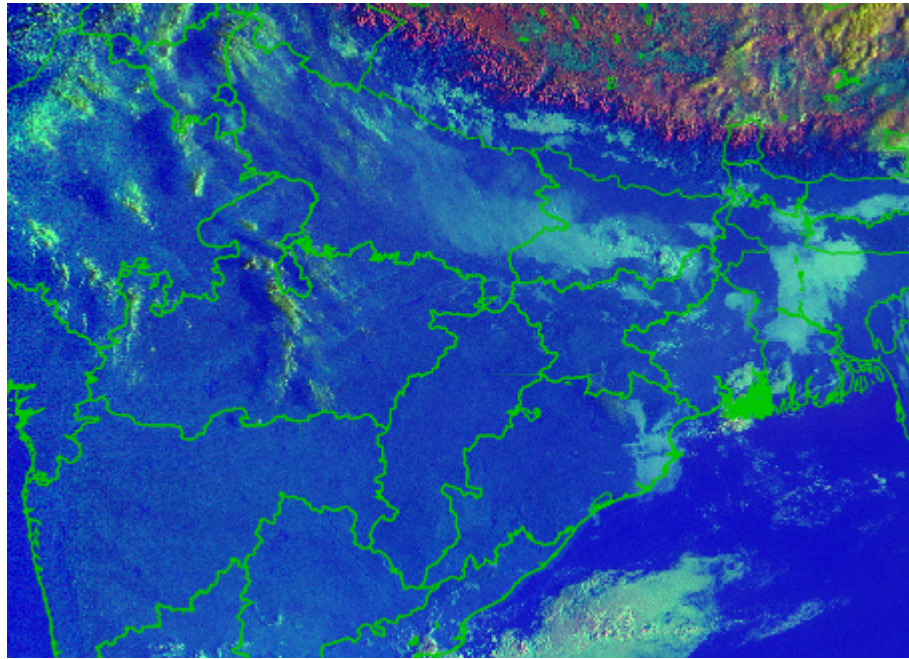


FIG.14:- DAY MICROPHYSICS IMAGERY OF INSAT-3D AT 0300 UTC OF 27.02.2020:

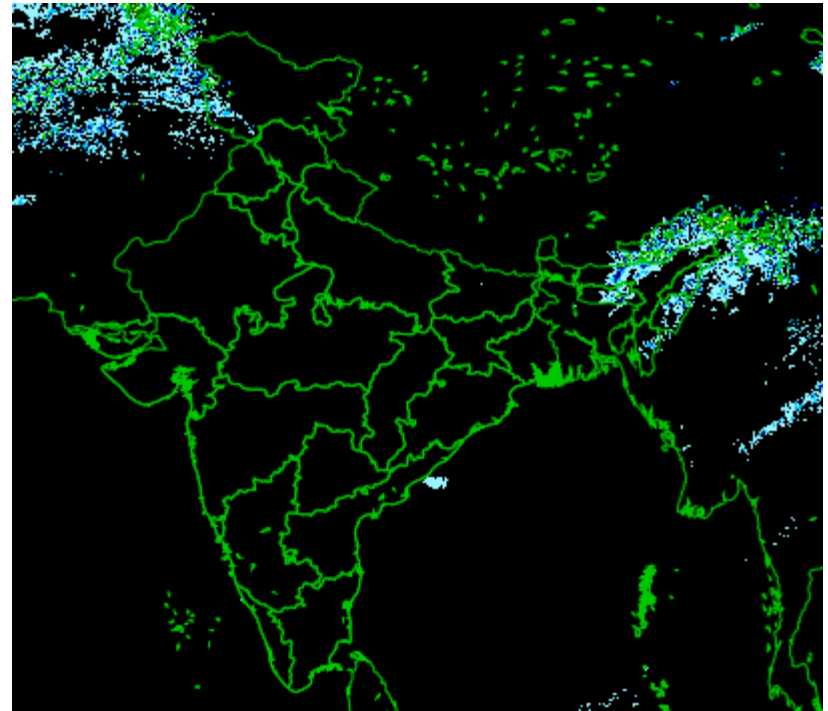
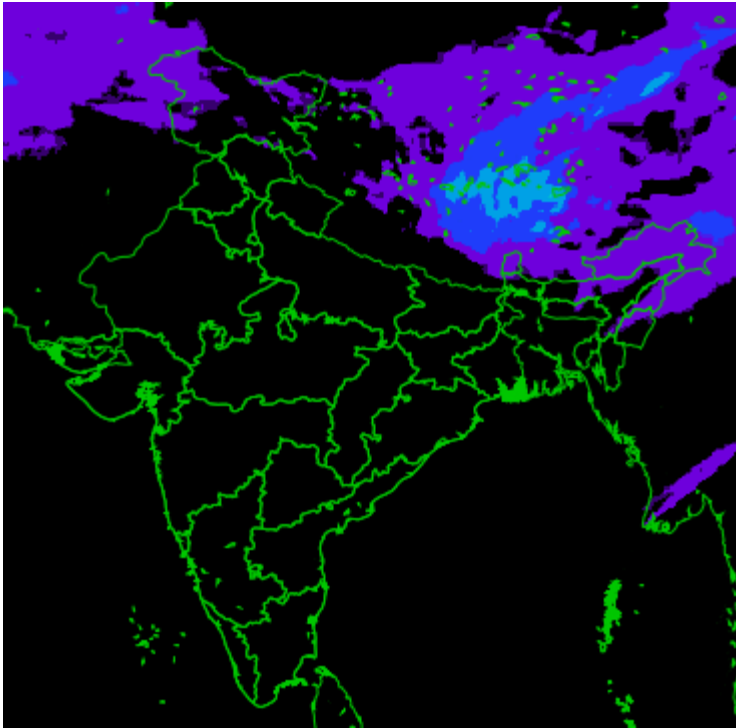
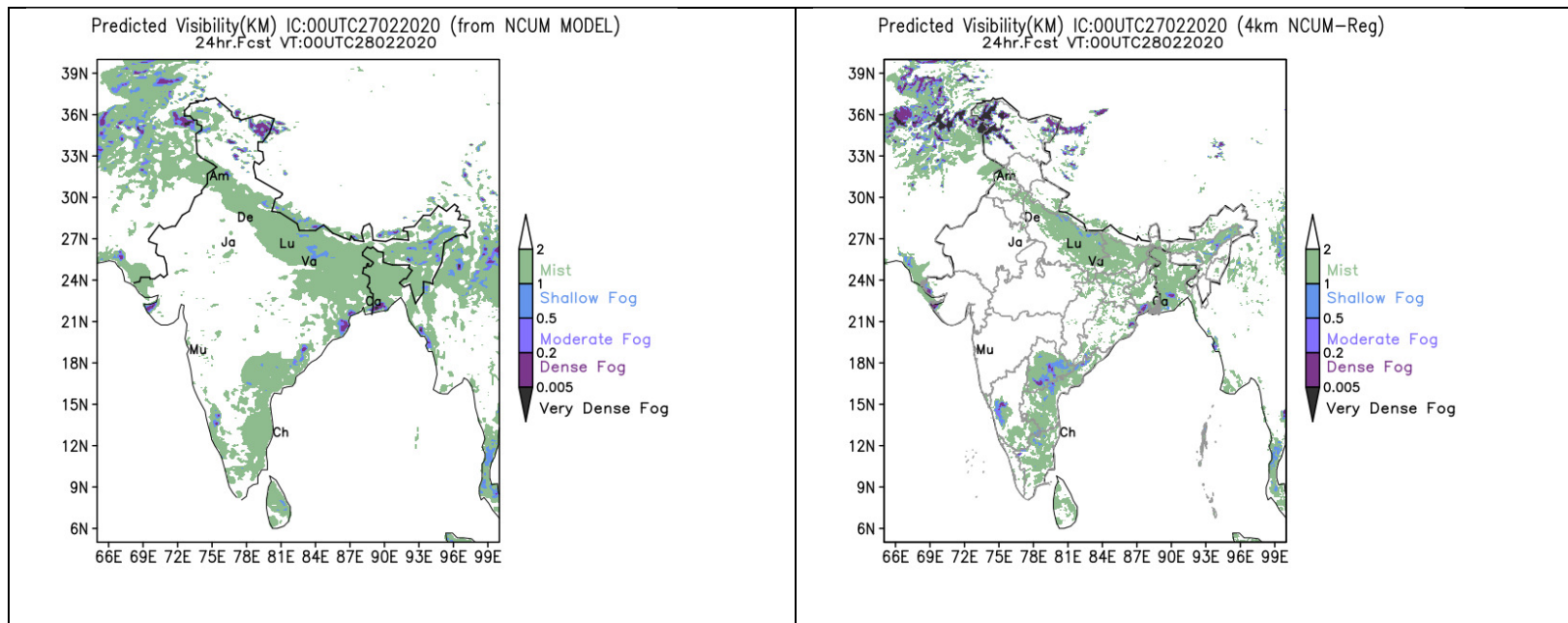
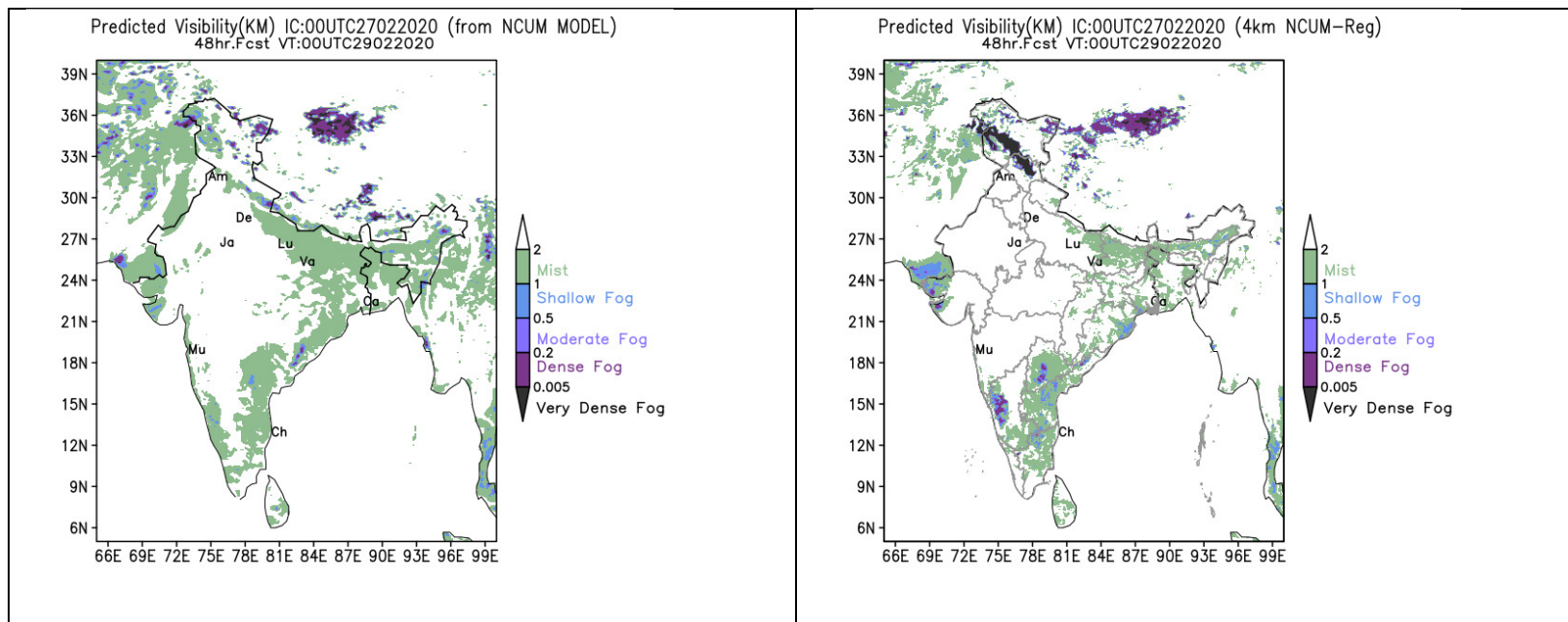


FIG.15: INSAT Daily Rainfall 27.02.2020



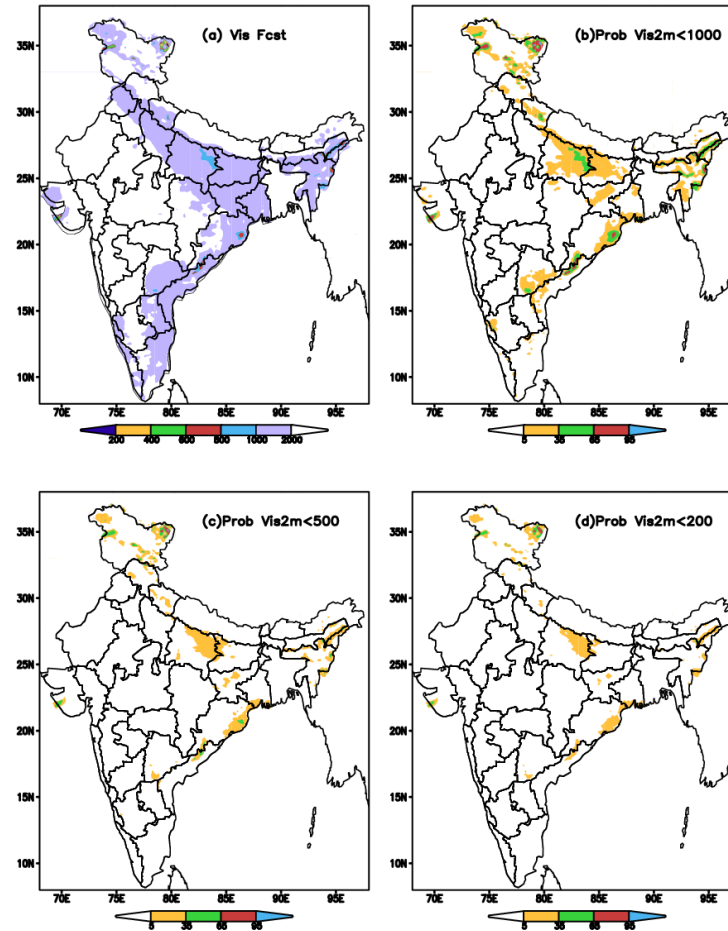
Day-1 visibility forecast valid for 00UTC on 28 Feb 2019 from global and regional NCUM



Day-2 visibility forecast valid for 00UTC on 29 Feb 2019 from global and regional NCUM.

NEPS Probabilistic Forecast of Visibility :- Day-1 Probabilistic forecast of visibility from NEPS valid for 00UTC 28TH Feb 2019.

NEPS Day-1 Fcst valid for 28FEB2020



Day-2 Probabilistic *forecast of visibility from NEPS valid for 00UTC 29th Feb 2019*

NEPS Day-2 Fcst valid for 29FEB2020

